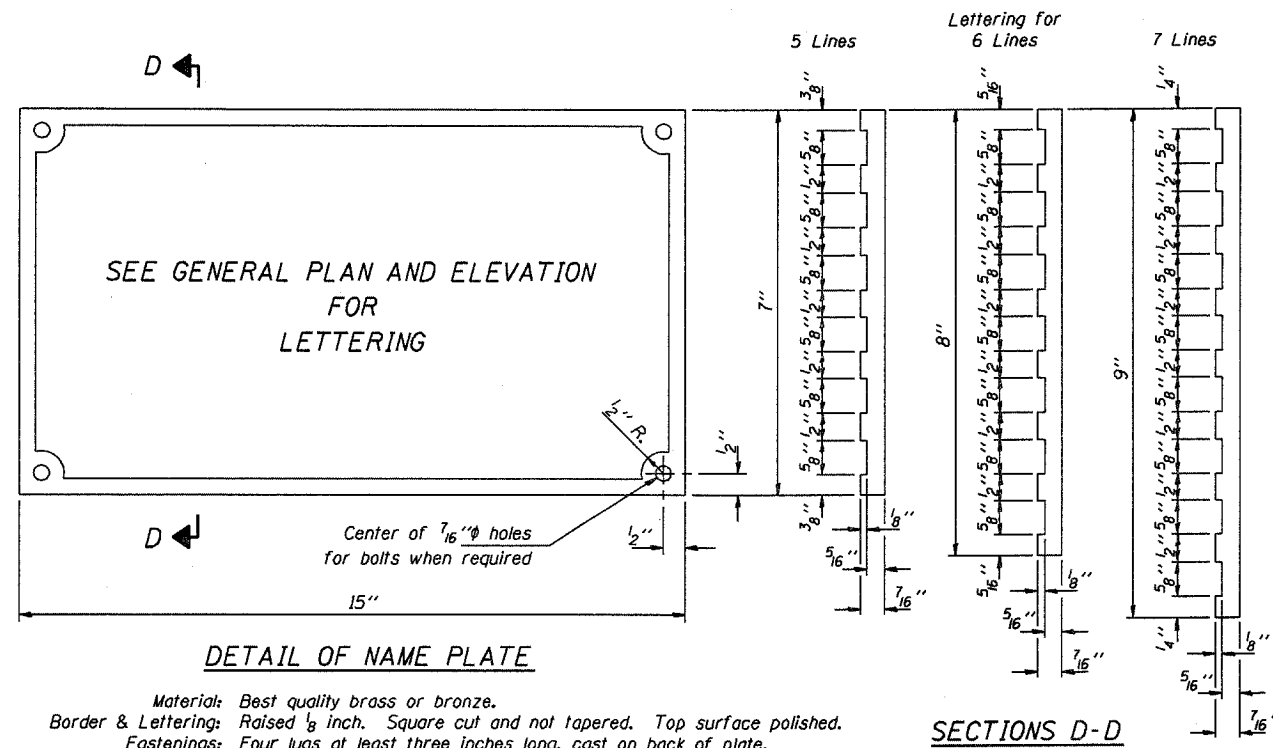


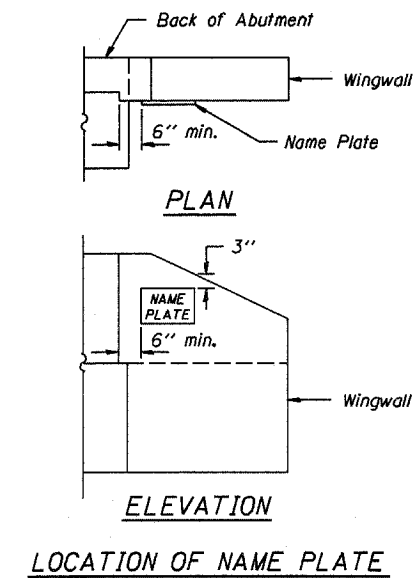
SECTION NO.	COUNTY HIGHWAY	COUNTY	SHEET OF SHEETS
00-00196-08-BR	47	ST. CLAIR	14 OF 18
FHWA REG. NO. 7 ILLINOIS		FEDERAL AID PROJECT	
CONTRACT 97257			



DETAIL OF NAME PLATE

Material: Best quality brass or bronze.
 Border & Lettering: Raised 1/8 inch. Square cut and not tapered. Top surface polished.
 Fastenings: Four lugs at least three inches long, cast on back of plate.

SECTIONS D-D



PLAN

ELEVATION

LOCATION OF NAME PLATE

Illinois Department of Transportation

PASSED APRIL 4, 2005
Thomas S. Nomanalaki
 Engineer of Bridge Design

APPROVED APRIL 4, 2005
Ralph E. Anderson
 Engineer of Bridges and Structures

ISSUED 7-1-95

NAME PLATE
 STANDARD CN