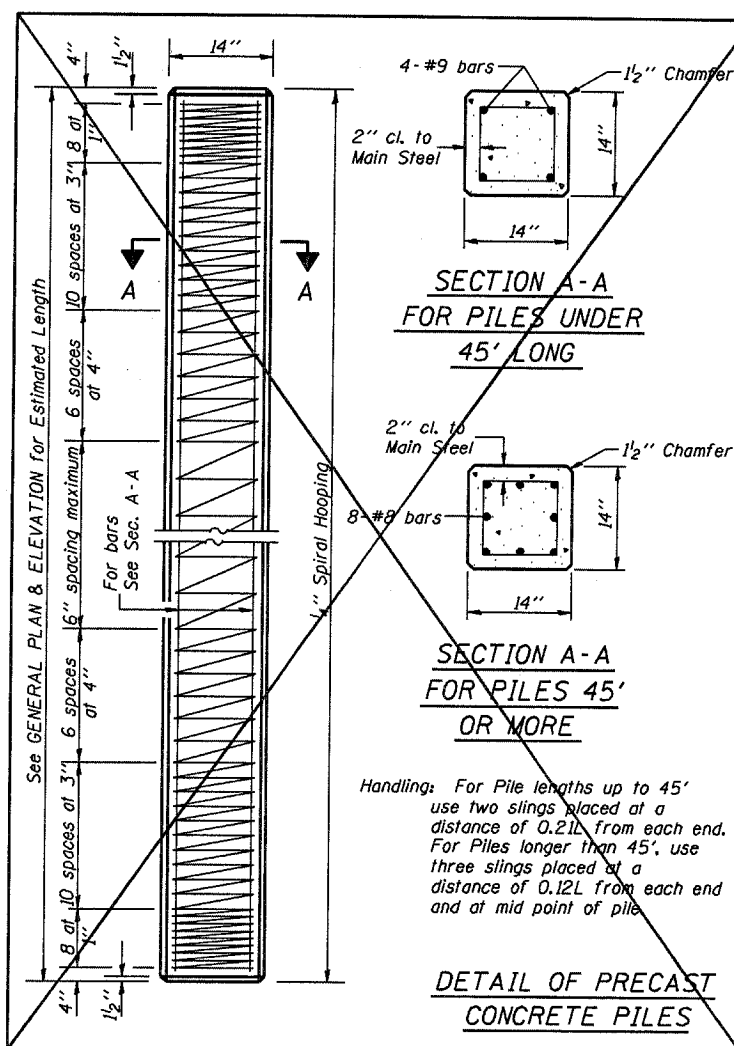
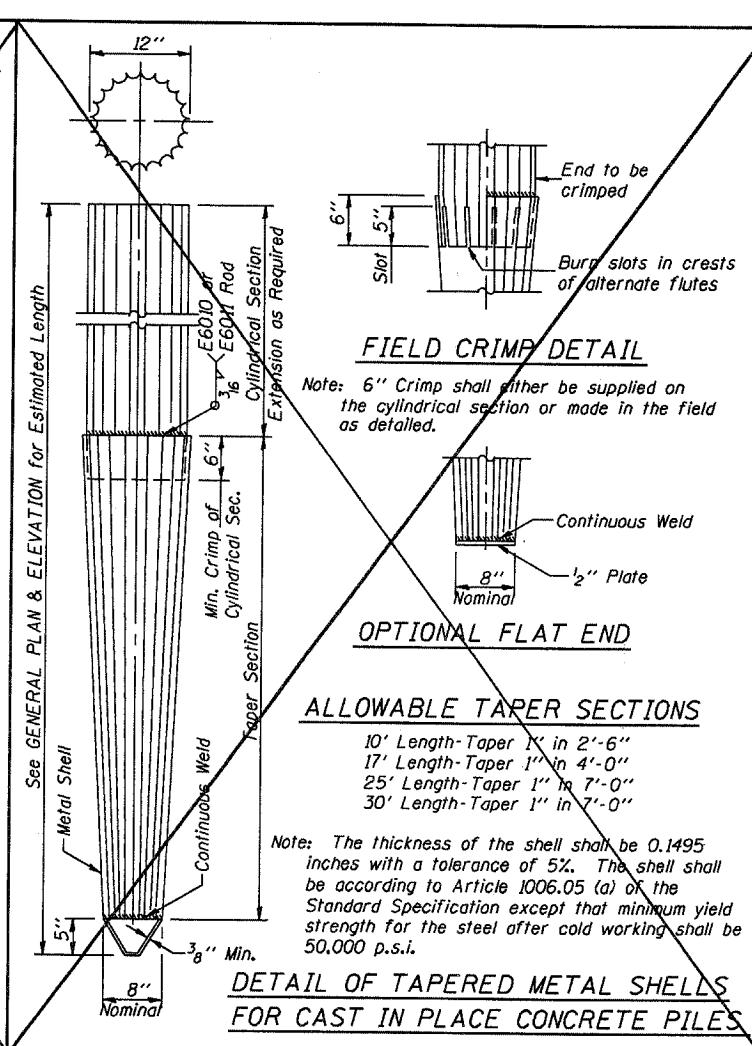


Reinforcement cage shall be omitted when Concrete Encasement is provided.

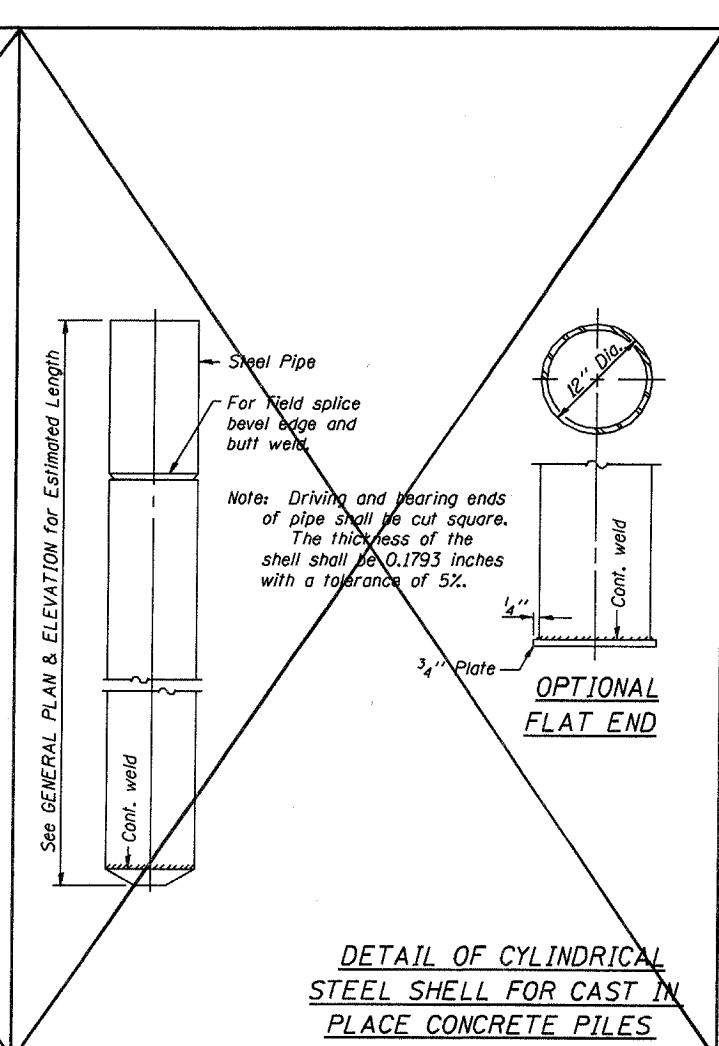
The cost of Reinforcement is included with the Cost of Furnishing Piles.



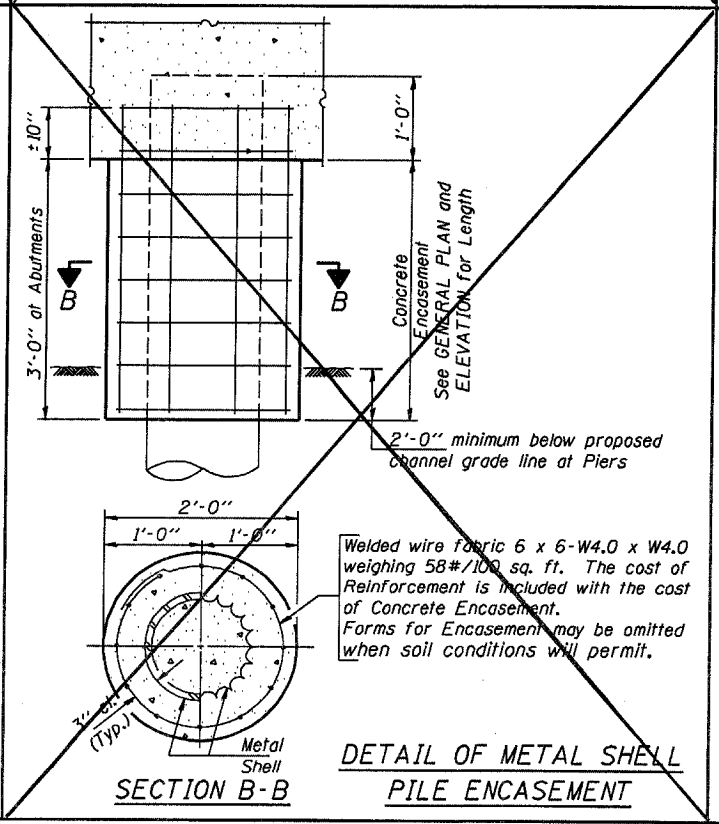
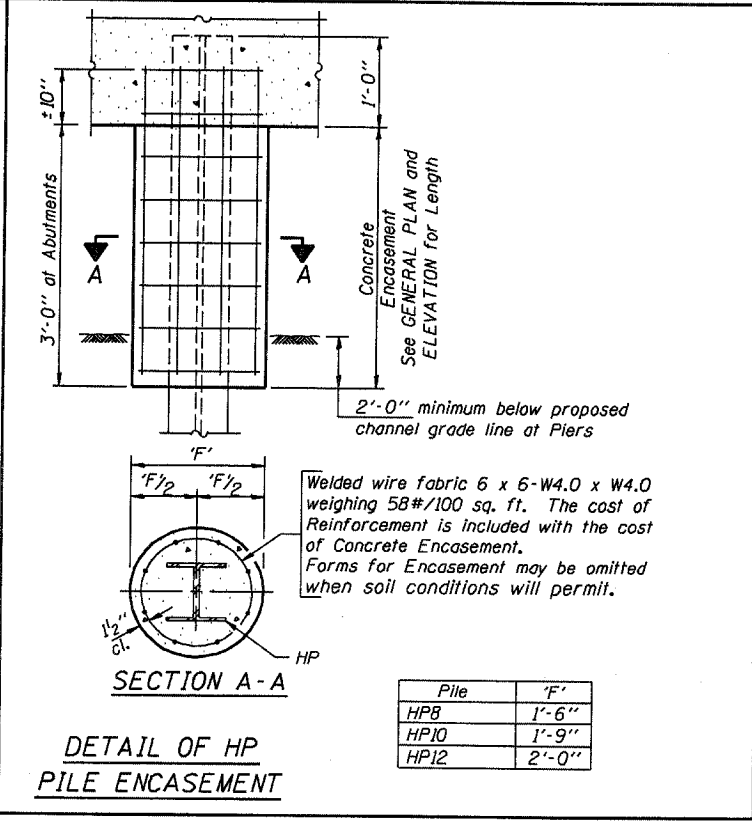
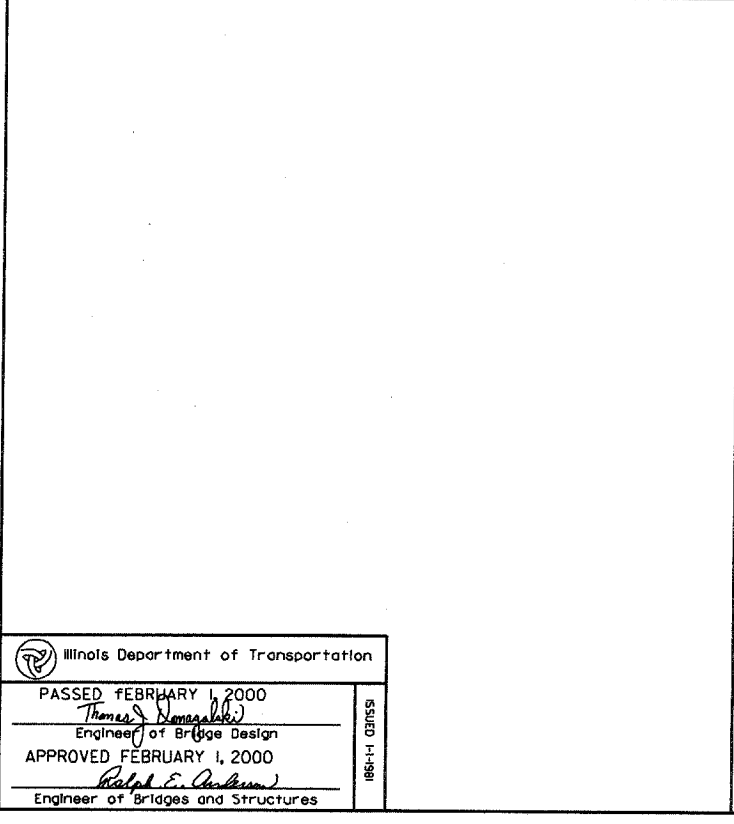
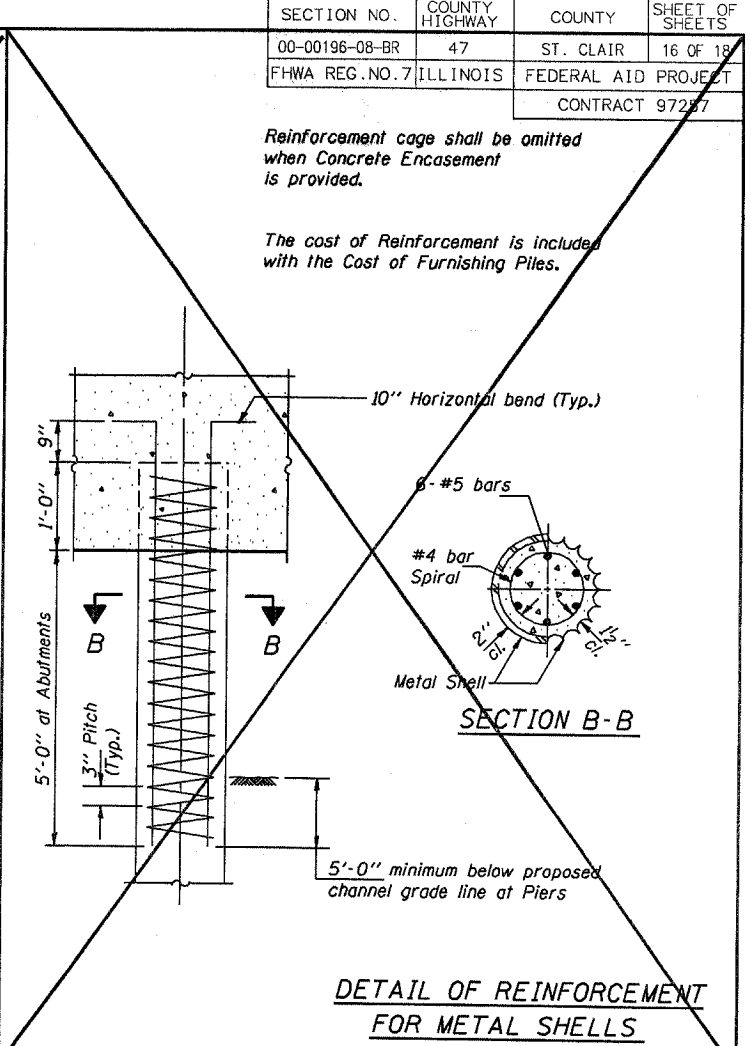
Handling: For Pile lengths up to 45' use two slings placed at a distance of 0.21L from each end. For Piles longer than 45', use three slings placed at a distance of 0.12L from each end and at mid point of pile.



Note: The thickness of the shell shall be 0.1495 inches with a tolerance of 5%. The shell shall be according to Article 1006.05 (a) of the Standard Specification except that minimum yield strength for the steel after cold working shall be 50,000 p.s.i.



Note: Driving and bearing ends of pipe shall be cut square. The thickness of the shell shall be 0.1793 inches with a tolerance of 5%.



QUANTITIES/FT. OF ENCASEMENT (STEEL PILES)

Pile Size	Item	Quantity
HP8	Concrete Encasement	0.063 C.Y.
HP10	Concrete Encasement	0.086 C.Y.
HP12	Concrete Encasement	0.112 C.Y.

(METAL SHELL PILES)

Pile Size	Item	Quantity
12" Dia.	Concrete Encasement	0.087 C.Y.

PILE DETAILS

STANDARD CX-1

Illinois Department of Transportation
 PASSED FEBRUARY 1, 2000
 Thomas J. Demas
 Engineer of Bridge Design
 APPROVED FEBRUARY 1, 2000
 Ralph E. Anderson
 Engineer of Bridges and Structures