

**JOHN A. SHORTAL,**  
**ARCHITECT, LTD.**  
 608 POPLAR STREET  
 JERSEYVILLE, ILLINOIS 62052  
 (618) 779-2740

**CITY OF**  
**GRAFTON**  
 GRAFTON, IL 62037

**GRAFTON HARBOR**  
**MARINA PROJECT**  
**RESTROOM BUILDING**  
 215 W. WATER STREET  
 GRAFTON, IL 62037

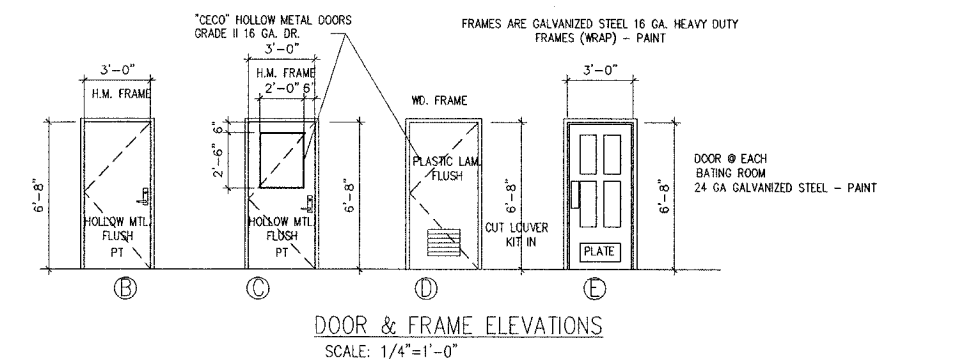
DATE: 9/1/05  
 REVISED: 00/00/00  
 ISSUED: FOR BID  
 PROJ. NO.: 40001  
 DRAWN BY: JoS

**SHEET TITLE**  
 ENLARGED PLAN  
 OF RESTROOM/SHOWER  
 BUILDING AND SCHEDULES  
 (8)

**A2.1**

ROOM FINISH SCHEDULE															
ROOM NO.	FLOOR	BASE				WALLS				CEILING	REMARKS				
		NORTH	SOUTH	EAST	WEST	NORTH	SOUTH	EAST	WEST						
103A	VCT	VB	VB	VB	VB	G.B.	PT	G.B.	PT	G.B.	PT	G.B.	PT	9'-0"	G.B.
103B	VCT	VB	VB	VB	VB	G.B.	PT	G.B.	PT	G.B.	PT	G.B.	PT	9'-0"	G.B.
103C	VCT	VB	VB	VB	VB	G.B.	PT	G.B.	PT	G.B.	PT	G.B.	PT	9'-0"	G.B.
104	VCT	VB	VB	VB	VB	FRP	FRP	FRP	FRP	FRP	FRP	FRP	FRP	9'-0"	G.B.
105	VCT	VB	VB	VB	VB	G.B.	PT	G.B.	PT	G.B.	PT	G.B.	PT	9'-0"	G.B.
106	VCT	VB	VB	VB	VB	FRP	FRP	FRP	FRP	FRP	FRP	FRP	FRP	9'-0"	G.B.
107	VCT	VB	VB	VB	VB	FRP	FRP	FRP	FRP	FRP	FRP	FRP	FRP	9'-0"	G.B.
108A	VCT	VB	VB	VB	VB	G.B.	PT	G.B.	PT	G.B.	PT	G.B.	PT	9'-0"	G.B.
108B	VCT	VB	VB	VB	VB	G.B.	PT	G.B.	PT	G.B.	PT	G.B.	PT	9'-0"	G.B.
109	VCT	VB	VB	VB	VB	FRP	FRP	FRP	FRP	FRP	FRP	FRP	FRP	9'-0"	G.B.
110	VCT	VB	VB	VB	VB	FRP	FRP	FRP	FRP	FRP	FRP	FRP	FRP	9'-0"	G.B.
111	VCT	VB	VB	VB	VB	FRP	FRP	FRP	FRP	FRP	FRP	FRP	FRP	9'-0"	G.B.
112	VCT	VB	VB	VB	VB	FRP	FRP	FRP	FRP	FRP	FRP	FRP	FRP	9'-0"	G.B.
113	VCT	VB	VB	VB	VB	FRP	FRP	FRP	FRP	FRP	FRP	FRP	FRP	9'-0"	G.B.
114	VCT	VB	VB	VB	VB	FRP	FRP	FRP	FRP	FRP	FRP	FRP	FRP	9'-0"	G.B.
115	VCT	VB	VB	VB	VB	FRP	FRP	FRP	FRP	FRP	FRP	FRP	FRP	9'-0"	G.B.

LEGEND:  
 VB = 4" VINYL BASE  
 G.B. = GYPSUM BO. 5/8"  
 FRP = "MARLITE" FIBERGLASS REINFORCED PANELS  
 VCT = VINYL COMPOSITION TILE (1/8")  
 S/V = STAINED AND VARNISH  
 PT. = PAINT  
 PT/VCT = PAINT AND VINYL WALL COVERING  
 PLYMD = 5/8" CDX PLYWOOD FOR MOUNTING

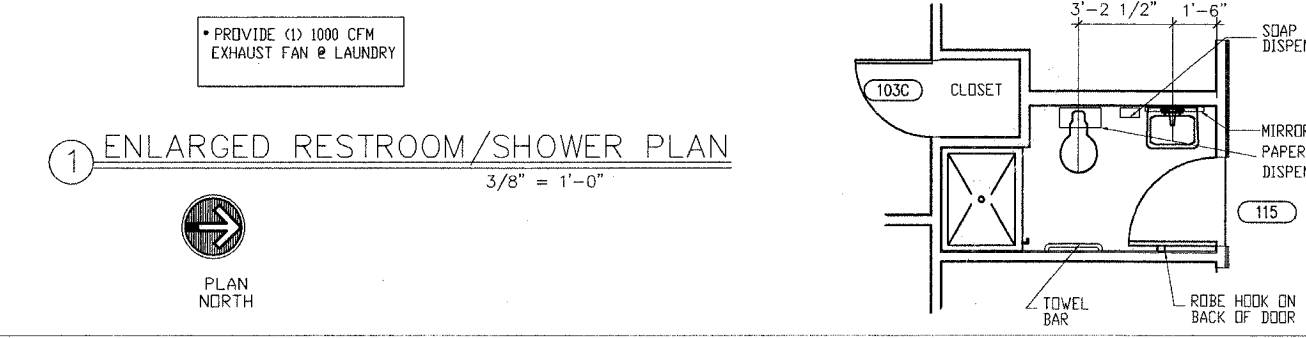
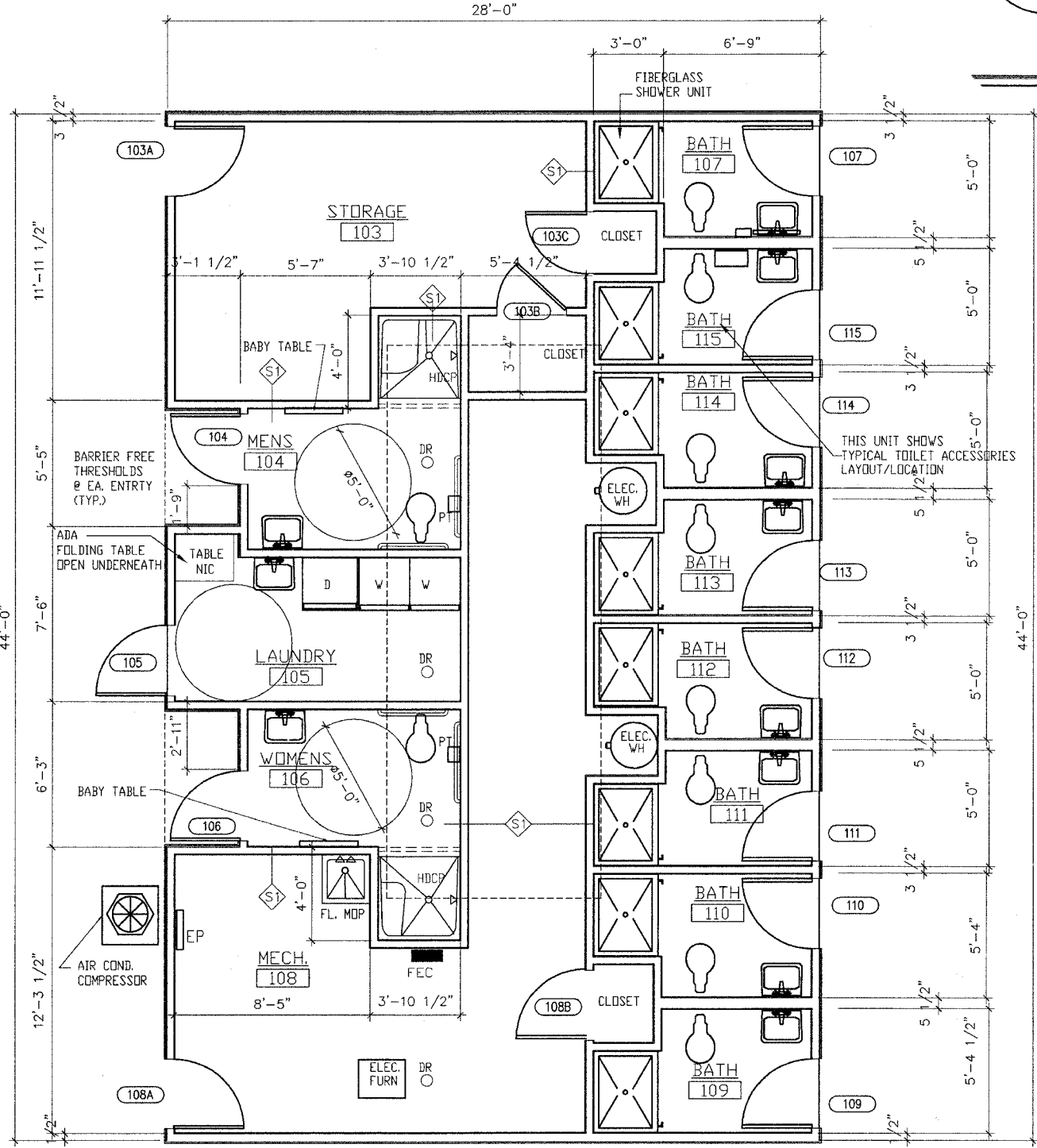


DOOR SCHEDULE									
DOOR OR ROOM NO.	SIZE	DR. MAT.	DR. FINISH	FRAME MAT.	FRAME FINISH	TYPE	LABEL	REMARKS	
103A	3'-0" x 7'-0"	HM	PT	HM	PT	B	-	NO CLOSURE	
103B	3'-0" x 7'-0"	HPL	-	WD	ST	D	-	NO CLOSURE	
103C	3'-0" x 7'-0"	HPL	-	WD	ST	D	-	NO CLOSURE	
104	3'-0" x 6'-8"	S	PT	HM	PT	E	-	-	
105	3'-0" x 7'-0"	HM	PT	HM	PT	C	-	-	
106	3'-0" x 6'-8"	S	PT	HM	PT	E	-	-	
107	3'-0" x 6'-8"	S	PT	HM	PT	E	-	-	
108A	3'-0" x 7'-0"	HM	PT	HM	PT	B	-	NO CLOSURE	
108B	3'-0" x 7'-0"	HPL	-	WD	ST	D	-	-	
109	3'-0" x 6'-8"	S	PT	HM	PT	E	-	-	
110	3'-0" x 6'-8"	S	PT	HM	PT	E	-	-	
111	3'-0" x 6'-8"	S	PT	HM	PT	E	-	-	
112	3'-0" x 6'-8"	S	PT	HM	PT	E	-	-	
113	3'-0" x 6'-8"	S	PT	HM	PT	E	-	-	
114	3'-0" x 6'-8"	S	PT	HM	PT	E	-	-	
115	3'-0" x 6'-8"	S	PT	HM	PT	E	-	-	

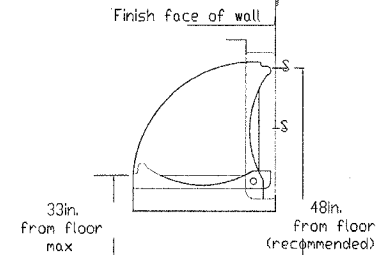
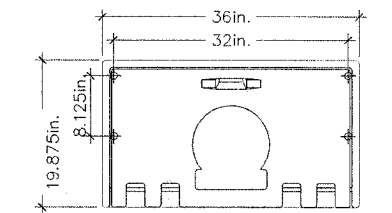
NOTE: 1. PROVIDE BARRIER-FREE THRESHOLD @ ALL ENTRY & EXIT DOORS.  
 2. ALL DOORS TO HAVE LEVER TYPE HARDWARE.  
 3. ALL DOORS SHALL HAVE CLOSURES UNLESS NOTED OTHERWISE.  
 4. ALL DOORS TO BATH HOUSE TO HAVE STAINLESS STEEL HINGES.

- PROVIDE HARDWARE FOR TYPICAL OFFICE ENTRY:  
 3 EA. HINGE 4 1/2" x 4 1/2" BUTTS BB1279 "HAGER"  
 1 EA. PRIVACY LOCK T301 Q "FALCON"  
 1 EA. FLOOR STOP WS401CCV "IVES"  
 1 EA. DOOR SILENCER SRG4 - GRAY "IVES"
- PROVIDE HARDWARE FOR TYP. STORAGE/MECHANICAL ROOM:  
 3 EA. HINGE 4 1/2" x 4 1/2" BUTTS BB1279 "HAGER"  
 1 EA. STOREROOM LOCK T581 Q X C607 F2 "FALCON"  
 1 EA. SURFACE CLOSURE 4010 SERIES LCN "IVES"  
 1 EA. KICK PLATE B400 12 X 1 1/2 LDW "IVES"  
 1 EA. FLOOR STOP WS401CCV "IVES"  
 1 EA. SMOKE GASKET S88B17 "PEMKO"
- PROVIDE HARDWARE FOR TYP. BATHING /SHOWER ROOM:  
 3 EA. HINGE 4 1/2" x 4 1/2" BUTTS BB1279 "HAGER"  
 1 EA. PRIVACY LOCK (THUMB TURN OR PUSH BUTTON) AND KEVED ENT  
 1 EA. PULL HANDLE FOR EXIT.  
 1 EA. PUSH PLATE FOR ENTRY  
 1 EA. SURFACE CLOSURE 4010 SERIES LCN (NON HOLD OPEN)  
 1 EA. KICK PLATE B400 12 X 1 1/2 LDW "IVES"  
 1 EA. FLOOR STOP WS401CCV "IVES"
- PROVIDE HARDWARE FOR LAUNDRY:  
 3 EA. HINGE 4 1/2" x 4 1/2" BUTTS BB1279 "HAGER"  
 1 EA. STOREROOM LOCK T581 Q X C607 F2 "FALCON"  
 1 EA. PULL HANDLE FOR EXIT.  
 1 EA. PUSH PLATE FOR ENTRY.

- REFER TO SPEC FOR TOILET ACCESSORIES  
 ALL ROOMS HAVE VCT FLOOR TILE  
 AND 6" VINYL BASE  
 "MARLITE" FRP WALL PANELS AT ALL WALLS  
 ALL WALLS OF EACH SHOWER ROOM TO HAVE M.R. G.P. BA.  
 SOUND BATTS @ ALL DEMISING PARTITIONS
- BABY CHANGING STATION IN EACH HANDICAP RESTROOM (2)  
 PROVIDE (2) "KDALA" HORIZONTAL STATIONS MODEL# KB 100-00 CREAM
- REFER TO SPEC PLO FOR FIXTURE SCHEDULE ACCESSORIES.  
 REFER TO SPEC (SECTION 10800) FOR TOILET ACCESSORIES
- PROVIDE (1) EXHAUST FAN AT EACH SHOWER ROOM REFER TO SHEET PLO FOR TYPE.  
 ALL SEPARATION WALLS BETWEEN SHOWER ROOMS TO HAVE R-11 SOUND BATT INSULATION



TYP. HDCP RESTROOM  
 3/8" = 1'-0"



TYPICAL RESTROOM  
 3/8" = 1'-0"  
 RE: SHEE A4.1 FOR INTERIOR ELEVATION

