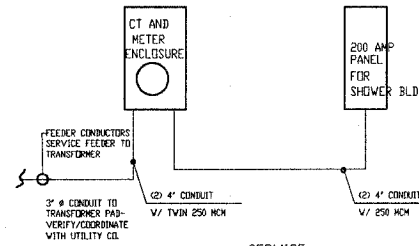


GENERAL NOTES

1. PROVIDE CONNECTION FOR ONE POWER OUTLET, ONE COMPUTER POWER OUTLET, ONE VOICE LINE AND ONE DATA LINE PER OWNER LOCATION (STORAGE 103)
2. REFER TO OTHER SHEET A60 FOR ADDITIONAL SPECIFICATIONS.
3. COORDINATE ALL VOICE, POWER, DATA, AND LIGHTING REQUIREMENTS WITH OWNER'S FURNITURE AND EQUIPMENT.
4. LOCATE BUILDING TRANSFORMER. COORDINATE FINAL LOCATION WITH POWER COMPANY (AMEREN UE) AND GENERAL CONTRACTOR (RE: A10)

LEGEND

NOTE:
GROUND W/ #3/0 CU GROUNDING ELECTRODE
GROUND ROD AND COLD WATER LINE IN STRICT ACCORDANCE
WITH THE NEC.
(GROUNDED BACK TO SHORE) WIRE SIZED BY ELECTRICAL CONTRACTOR)



SERVICE:
200 AMP, 4 WIRE 120/208 V - 1 PHASE
ELECTRIC PANEL RISER

SERVICE : 200 AMP
(1) 200 AMP

LIGHTING LOAD: BATH HOUSE
PROVIDE 20 AMP SPACES
3.5 VA PER SF. OF FLOOR SPACE
3.5 VA x 1,232 S.F. ± = (4,312 VA / 240) = 18 AMPERES

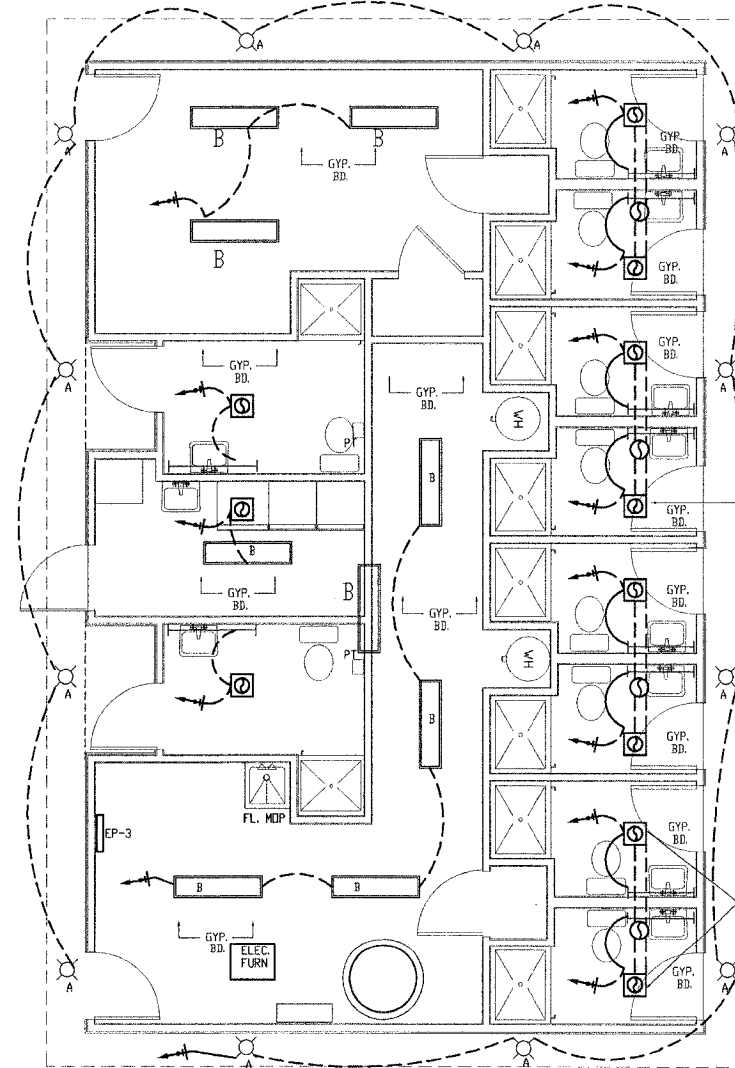
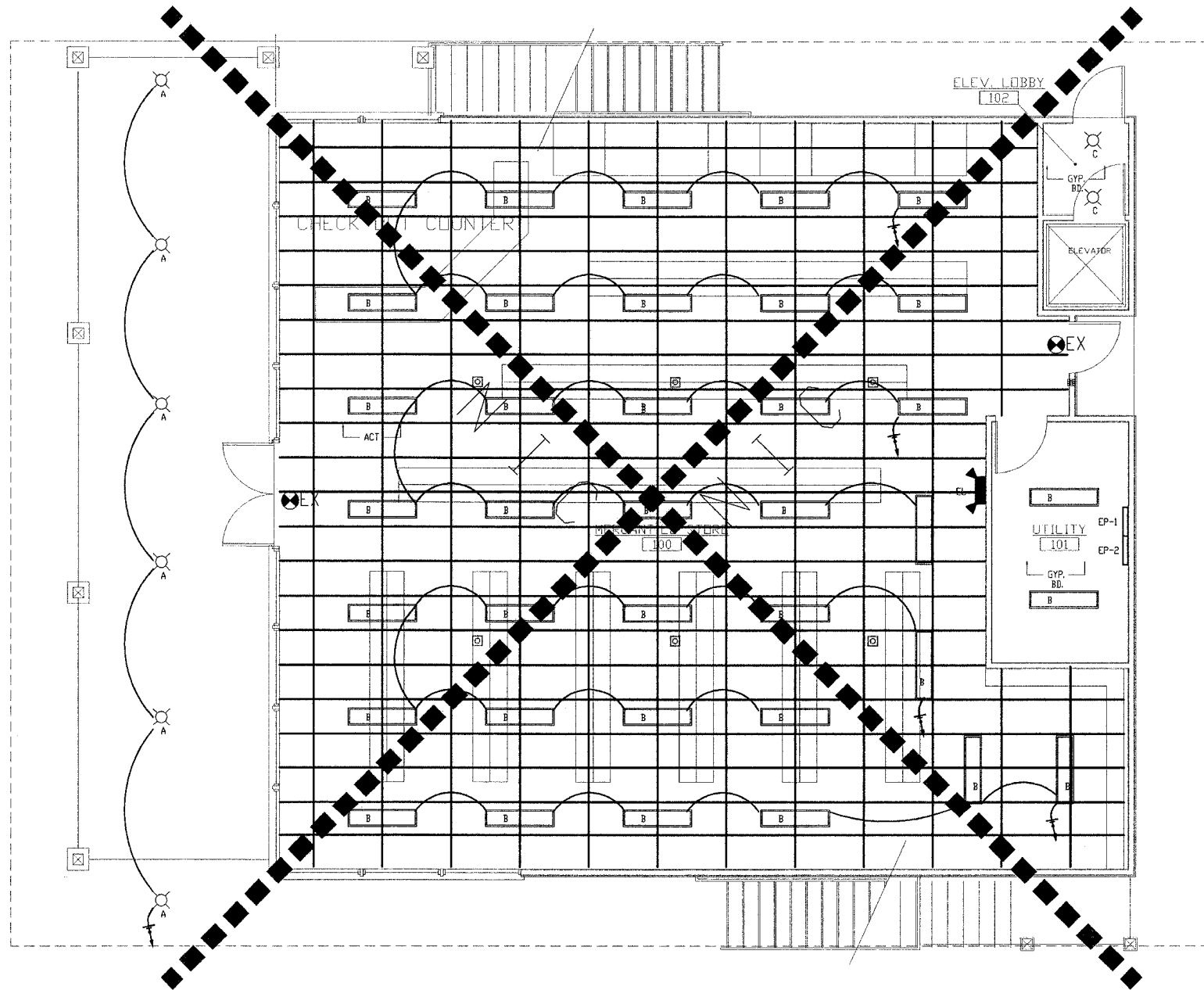
COMMON RECEPTACLE LOAD:
PROVIDE 15 AMP SPACES
1.5 VA PER SF. OF FLOOR SPACE
MAXIMUM 10 OUTLETS PER 15 AMP BREAKER
1.5 VA x 3970 SF. (INCLUDES BATHHOUSE) = (5,955 VA / 240) = 24 AMPERES

DEDICATED LOAD (EXHAUST FANS - 9 TOTAL)
15 AMP BREAKERS EACH
LOAD: 22 AMPS TOTAL

DEDICATED LOAD (DRYERS)
40 AMP BREAKERS EACH
LOAD: 24 AMPS x (2) = 48 AMPS

DEDICATED LOAD (AIR CONDITIONER):
60 AMP BREAKERS EACH
LOAD: 24 AMPS x (2) = 48 AMPS

TOTAL DEMAND LOAD:
160 AMPERES



PROVIDE (2)
PHOTO ELECTRIC FIXTURE
(INCANDESCENT) IN CLESTORY
150 WATT EACH

Restroom Exhaust Fans
"Broan" single port 6" duct
Model #SP140

150 CFM ELEC. FAN
CONNECT EACH FAN TO
EXHAUST UP THRU ROOF

EXTERIOR RECESSED FIXTURES
ARE CONTROLLED BY PHOTOELECTRIC SWITCH

1 LIGHTING PLAN
1/4" = 1'-0"



PLAN NORTH

JOHN A. SHORTAL,
ARCHITECT, LTD.
608 POPLAR STREET
JERSEYVILLE, ILLINOIS 62052
(618) 779-2740

CITY OF
GRAFTON

GRAFTON, IL 62037

GRAFTON HARBOR
MARINA PROJECT
RESTROOM BUILDING
215 W. WATER STREET
GRAFTON, IL 62037

DATE: 9/1/05

REVISED: 00/00/00

ISSUED: FOR BID

PROJ. NO.: 40001

DRAWN BY: JcS

SHEET TITLE
LIGHTING
PLAN

(12)

E1.0