

F.A. RITE	SECTION	COUNTY	TOTAL SHEETS	SHEET NO.
98-00013-00-HP	JERSEY	ILLINOIS	15	15

FED. ROAD DIST. NO. ILLINOIS FED. AID PROJECT

CONTRACT NO. 97262

**JOHN A. SHORTAL,
ARCHITECT, LTD.**
608 POPLAR STREET
JERSEYVILLE, ILLINOIS 62052
(618) 779-2740

**CITY OF
GRAFTON**
GRAFTON, IL 62037

**GRAFTON HARBOR
MARINA PROJECT
RESTROOM BUILDING**
215 W. WATER STREET
GRAFTON, IL 62037

DATE: 9/1/05

REVISED: 00/00/00

ISSUED: FOR BID

PROJ. NO.: 40001

DRAWN BY: JGS

SHEET TITLE
PLUMBING PLAN

(15)

P1.0

FIXTURE SCHEDULE

Water heater:
"Energy Kinetics" 80 gal. electric.

LAVATORY SINK: (F1)
"BRADLEY" - TERRON IMPERIAL (ADA) single station, solid surface, MOD #L-18 21"x18" ADA compliant 4" faucet centers

LAVATORY (FAUCET): (F1)
BRADLEY 900 BR Model # SS3-284 (ADA)
S83-005 (24 VOLT TRANSFORMER)
SS3-056 (TMA Vernotherm thermostatic mixing valve)
289-1231 Drain assembly.

Water Closet: ADA (F2)
"MANSFIELD" ADRATIC 17" elongated model #1317, with 1 1/2" top spud
Sloan flush valve "Royal model #110 or Flushometer gem 2110

Water Closet: (F4)
"MANSFIELD" ULF COMMERCIAL" elongated model #1310, 1 1/2" top spud
Sloan flush valve "Royal model #110 or Flushometer gem 2110

SEAT
MANSFIELD #295C

SHOWER (ADA)
"BRADLEY" HN 250 Barrier-Free Shower Title 24 Compliant
All standard equipment. (SEE PLANS FOR VALVE/SEAT CONFIGURATION)
WITH (HN250-EF) EQUA-FLO HD PRESSURE BALANCING MIXING VALVE.
COLOR - BONE

SHOWER (TYPICAL)
FIBERGLASS SURROUND
"BRADLEY" MODEL WS-1WCA
INDIVIDUAL COVERALL WALL SHOWER FIXTURE
PROVIDE 32x42 SHOWER PANS. ACRYLIC MODIFIED POLYESTER RESIN.
COLOR - BONE

Restroom Exhaust Fan:
"Broan" single port 6" duct - Model #SP140

Map Sink: molded stone (F3)

FAT PRODUCTS: Model # MSB-3624 - faucet 830AA - hose/dip 832AA
map hanger 889AA - vinyl bumperguard E77-AA - wall guard MSG 2424

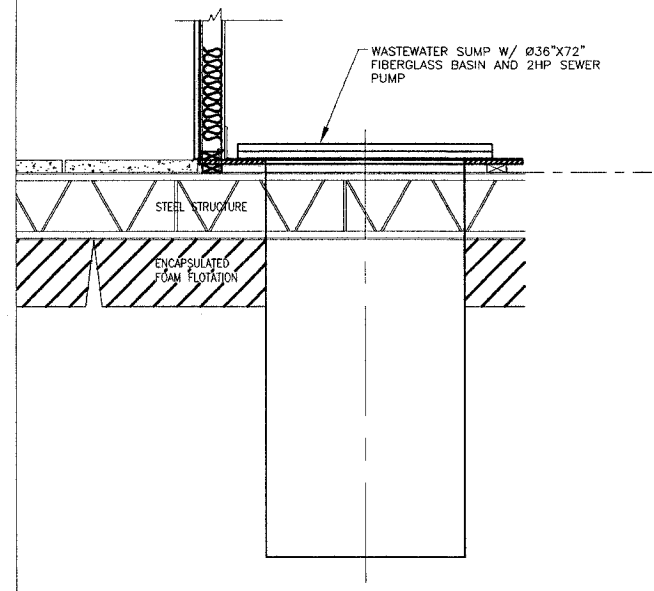
Backflow preventer: ARMITROL (Therm-x-tral ST-12)

SEE SPECIFICATIONS FOR ADDITIONAL FIXTURE & FITTINGS.
(DRAINS, CLEANOUTS, TRAPS, PIPING ETC)

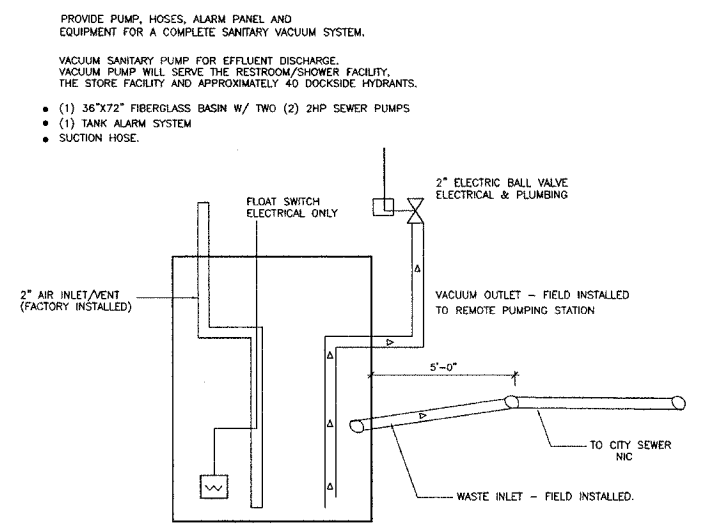
SANITARY WASTE HOLDING TANK DESIGNED BY CONTRACTOR/VENDOR SHALL MEET THE ILL. DEPT OF PUBLIC HEALTH & ILL PLUMBING CODE.

- 1" HOT & COLD WATER SUPPLY THROUGHOUT THE BUILDING REDUCE DOWN TO 1/2" AT EACH FIXTURE.
- 1/2" HOT & COLD WATER SUPPLY @ LAV. (TYP.)
- 1/2" COLD SUPPLY @ SHOWER AND WATER CLOSET. (TYP.)
- 3" VENT @ W.C. (TYP.)
- 1 1/2" VENT @ LAV & SHOWER. (TYP.)

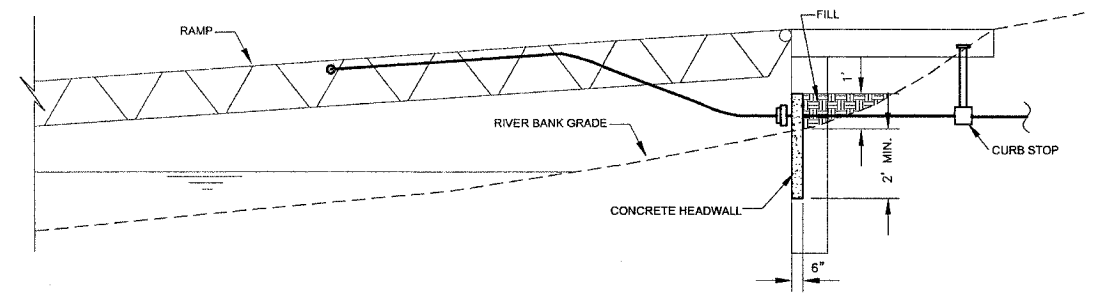
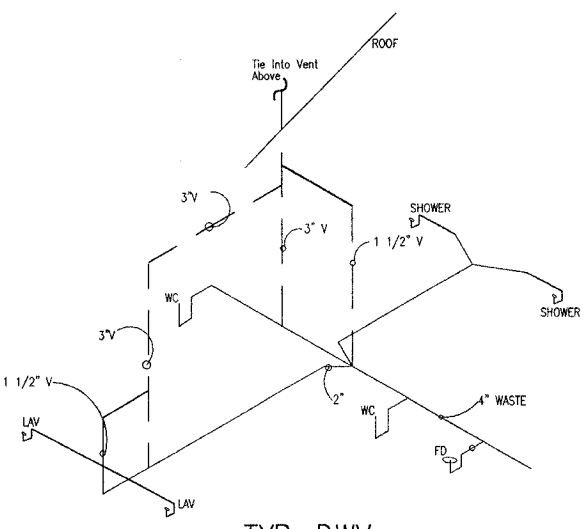
ALL SUPPLY PLUMBING IN ATTIC ABOVE
ALL PIPING TO BE INSULATED.



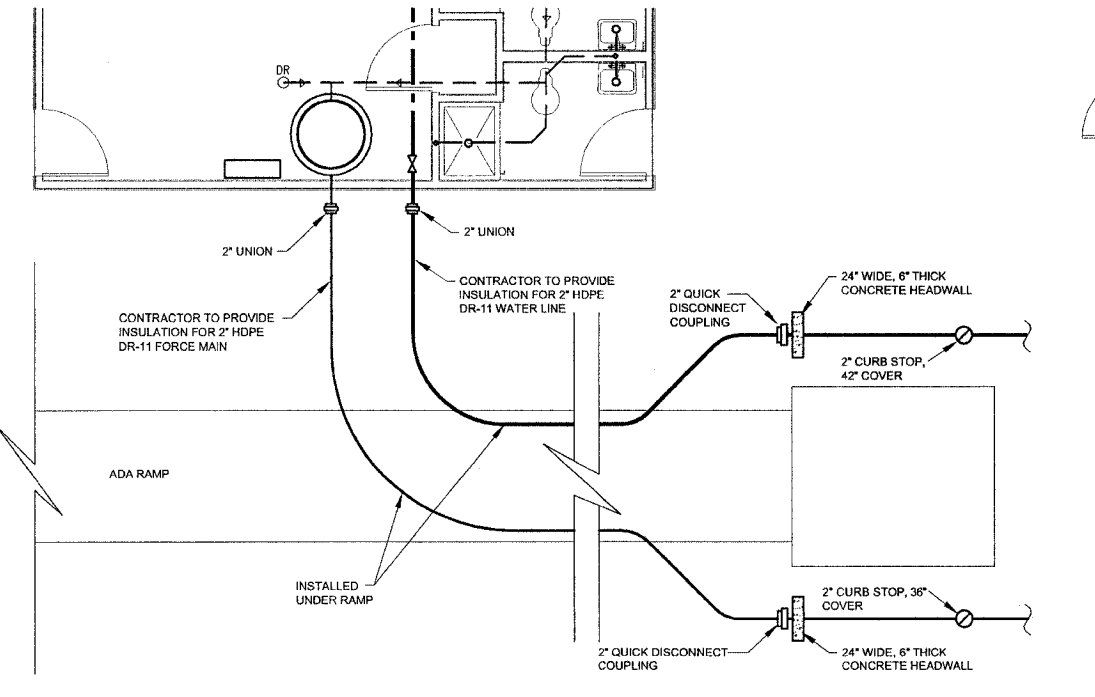
6 SEPTIC BASIN
NTS



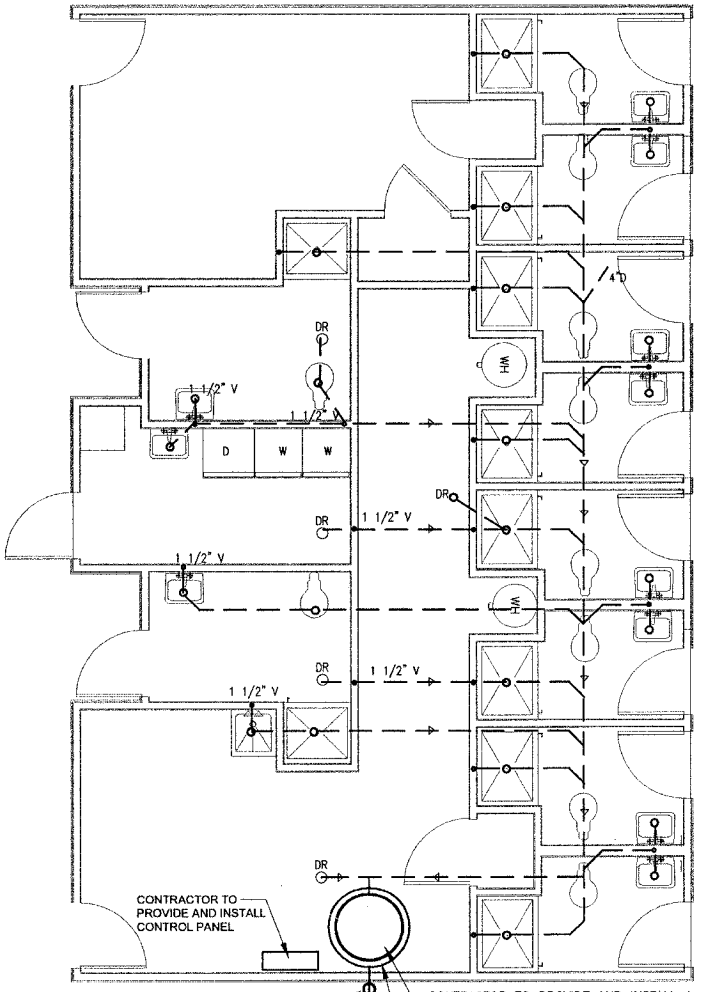
3 SEPTIC BASIN SCHEMATIC
NTS



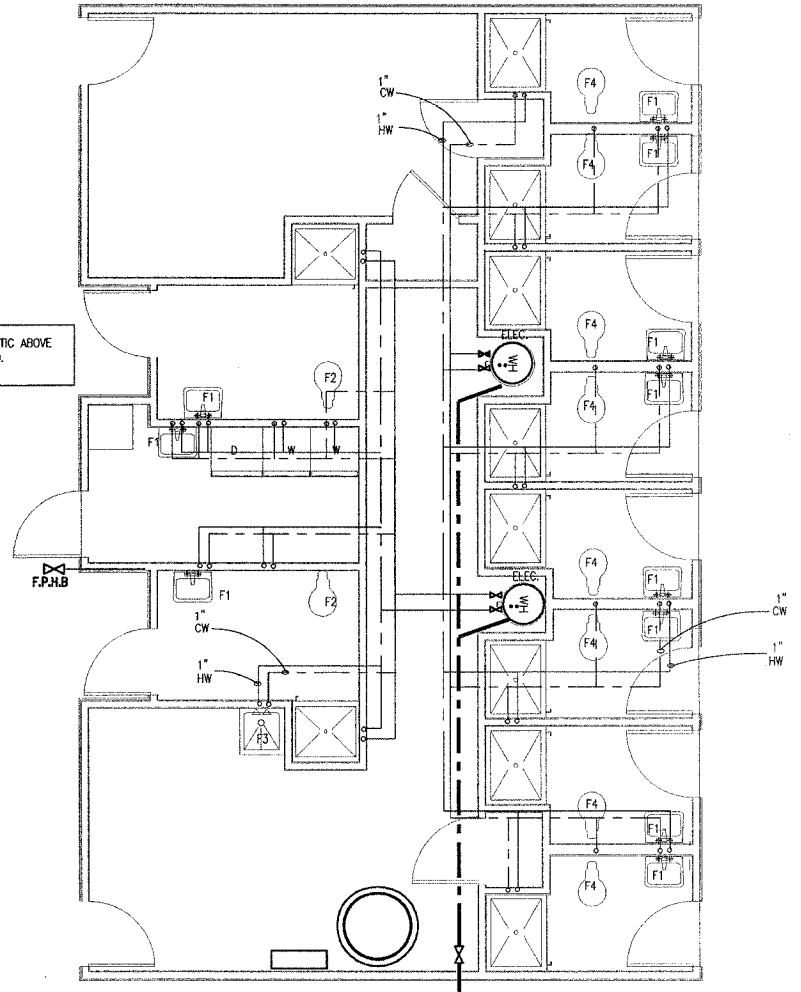
5 PIPE CONNECTIONS - SECTION VIEW
NTS



4 PIPE CONNECTIONS - PLAN VIEW
NTS



1 PLUMBING PLAN (SANITARY)
1/4" = 1'-0"



1 PLUMBING PLAN (SUPPLY)
1/4" = 1'-0"