

RTE.	SECTION	COUNTY	TOTAL SHEETS	SHEET NO.
VARIOUS	-	VARIOUS	14	1

*D-9 CONT. MAINT. FY 06-5

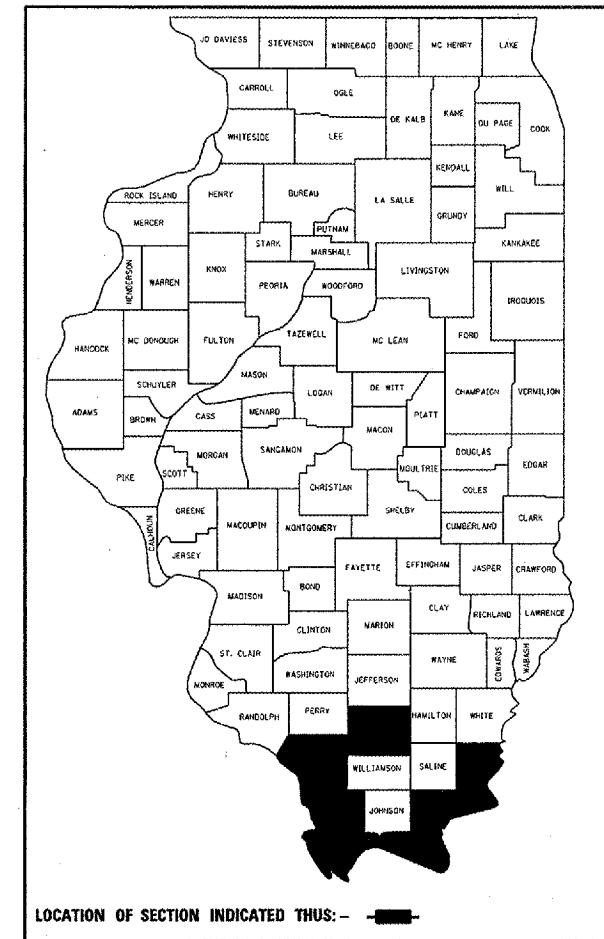
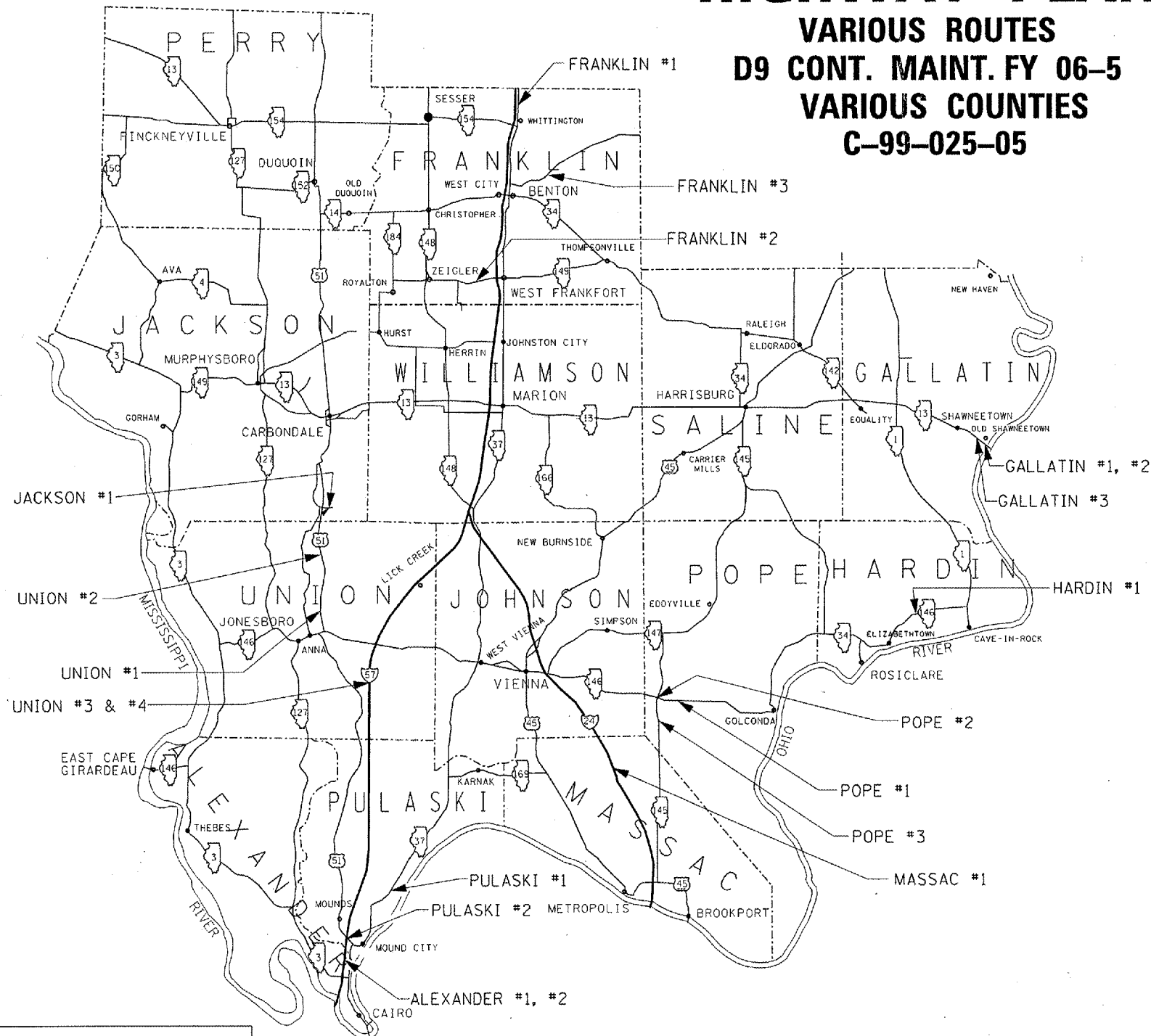
STATE OF ILLINOIS
DEPARTMENT OF TRANSPORTATION
DIVISION OF HIGHWAYS

**PROPOSED
HIGHWAY PLANS**

VARIOUS ROUTES
D9 CONT. MAINT. FY 06-5
VARIOUS COUNTIES
C-99-025-05

FOR SIGNATURES/INDEX/STANDARDS/GENERAL NOTES, SEE SHEET NO. 2

FOR SUMMARY OF QUANTITIES, SEE SHEET NO. 3



STATE OF ILLINOIS
DEPARTMENT OF TRANSPORTATION
DIVISION OF HIGHWAYS

SUBMITTED July 17, 2005 *Mary C. Lami*
DEPUTY DIRECTOR OF HIGHWAYS, REGION 5 ENGINEER

August 19, 2005 *Mike Hene*
ENGINEER OF DESIGN AND ENVIRONMENT

August 19, 2005 *Victor Moders*
DIRECTOR OF HIGHWAYS, CHIEF ENGINEER

PRINTED BY THE AUTHORITY OF THE STATE OF ILLINOIS

J.U.L.I.E.
JOINT UTILITY LOCATION INFORMATION FOR EXCAVATION
1-800-892-0123

(618) 549-2171
CENTREX 782-4554

PROJECT ENGINEER: LARRY L. PICHE

INDEX OF SHEETS

VARIOUS
D-9 CONT. MAINT. FY 06-5
VARIOUS CO.
CONTRACT # 98917
SHEET 2 OF 14

<u>SHEET NO.</u>	<u>DESCRIPTION</u>
1	COVER SHEET
2	SIGNATURE, INDEX, STANDARDS, AND GENERAL NOTES
3	SUMMARY OF QUANTITIES
4	GUARD RAIL SCHEDULE
5	TIMBER CURB DETAIL
6-14	LOCATION MAPS

STANDARDS

33001-05	635011-01	701106-01
331006-03	701001-01	701201-02
635001	701006-02	701400-02
335006-02	701101-01	701406-04
		702001-05

GENERAL NOTES

The guardrail radius provided in the Guardrail Schedule is for information only and must be verified in the field.

STATE OF ILLINOIS DEPARTMENT OF TRANSPORTATION DIVISION OF HIGHWAYS	
SUBMITTED	<u>July 17</u> 20 <u>05</u> <i>Mary C. Lami</i> DEPUTY DIRECTOR OF HIGHWAYS/REGION 5 ENGINEER
PREPARED BY:	<i>[Signature]</i> DISTRICT OPERATIONS ENGINEER
EXAMINED BY:	<i>[Signature]</i> ASSISTANT REGIONAL ENGINEER
EXAMINED BY:	<i>[Signature]</i> DISTRICT PROGRAM DEVELOPMENT ENGINEER
EXAMINED BY:	<i>[Signature]</i> DISTRICT STUDIES & PLANS ENGINEER
EXAMINED BY:	<i>[Signature]</i> DISTRICT LAND ACQUISITION ENGINEER
EXAMINED BY:	<i>[Signature]</i> DISTRICT PROJECT IMPLEMENTATION ENGINEER
EXAMINED BY:	<i>[Signature]</i> DISTRICT CONSTRUCTION ENGINEER
EXAMINED BY:	<i>[Signature]</i> DISTRICT MATERIALS ENGINEER

SUMMARY OF QUANTITIES

CODE NUMBER	ITEM DESCRIPTION	UNIT	VARIOUS COUNTIES
			RURAL 100% STATE
	CONSTRUCTION TYPE CODE		SFTY-3J
63000000	STEEL PLATE BEAM GUARD RAIL, TYPE A	FOOT	962.5
63100167	TRAFFIC BARRIER TERMINAL TYPE 1, SPECIAL (TANGENT)	EACH	2.0
63100169	TRAFFIC BARRIER TERMINAL TYPE 1, SPECIAL (FLARED)	EACH	1.0
63200310	GUARDRAIL REMOVAL	FOOT	1062.5
67100100	MOBILIZATION	L SUM	1.0
70100305	TRAFFIC CONTROL AND PROTECTION, STANDARD 701400	L SUM	1.0
70100450	TRAFFIC CONTROL AND PROTECTION, STANDARD 701201	L SUM	1.0
70100700	TRAFFIC CONTROL AND PROTECTION, STANDARD 701406	L SUM	1.0
78200420	GUARDRAIL MARKERS, TYPE B	EACH	25.0
78201000	TERMINAL MARKER - DIRECT APPLIED	EACH	3.0
X0322878	TIMBER CURB	FOOT	300.0
X6330120	TRAFFIC BARRIER TERMINAL TYPE 1 (REPAIR)	EACH	1.0

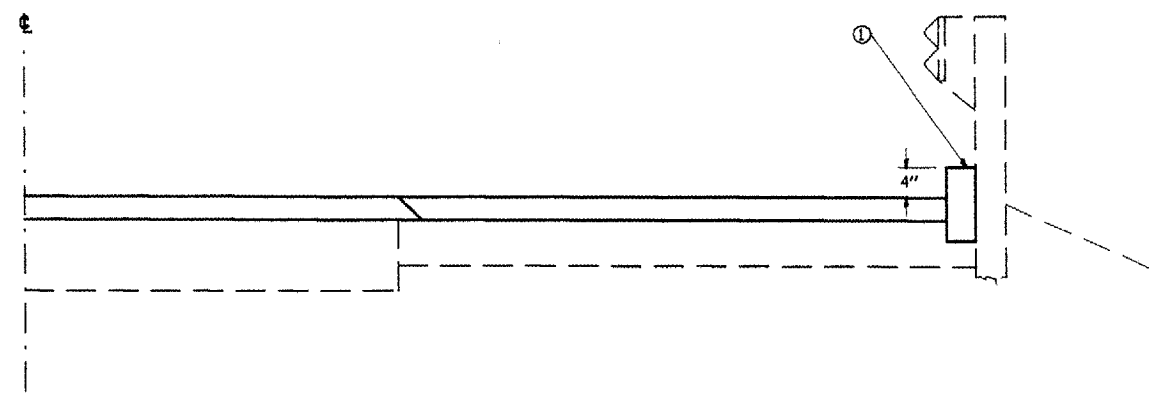
GUARDRAIL SCHEDULE

NAME	LOCATION	DESCRIPTION	63000000 SPBGR TYA (FOOT)	63100167 TBT T1 SPL TAN (EACH)	63100169 TBT T1 SPL FLR (EACH)	63200310 GUARDRAIL REMOVAL (FOOT)	#9000263 TBT T1 (REP) (EACH)	78200420 GUARDRAIL MARKERS (EACH)	78201000 TERMINAL MARKER (EACH)	X0322878 TIMBER CURB
ALEXANDER COUNTY										
ALEXANDER #1	I-57 SOUTHBOUND, MP 4, AT STRUCTURE 002-0004		12.5			12.5				
ALEXANDER #2	I-57 NORTHBOUND, MP 4, AT STRUCTURE 002-0001		12.5			12.5				
FRANKLIN COUNTY										
FRANKLIN #1	I-57 NB @ 79.5 MM, EAST SIDE		12.5			12.5				
FRANKLIN #2	IL 149 AT STRUCTURE 028-0038		100			100		2		
FRANKLIN #3	IL 14 AT STRUCTURE 028-0023		12.5			12.5				
GALLATIN COUNTY										
GALLATIN #1	IL 13 @ E ENTRANCE TO OLD SHAWNEETOWN-NW QUAD	4 PANELS BENT AT 35 FT RAD	75			75		4		
GALLATIN #2	IL 13 @ E ENTRANCE TO OLD SHAWNEETOWN-NE QUAD	3 PANELS BENT AT 35 FT RAD	37.5			37.5		2		
GALLATIN #3	IL 13 @ W ENTRANCE TO OLD SHAWNEETOWN-NE QUAD	2 PANELS BENT AT 35 FT RAD	25			25		1		
HARDIN COUNTY										
HARDIN #1	IL 146 AT STRUCTURE 035-0012		37.5			37.5		1		
JACKSON COUNTY										
JACKSON #1	MAKANDA ROAD, MILEPOST 0.45		87.5	1		137.5		3	1	
MASSAC COUNTY										
MASSAC #1	I 24 WB (EXIT 27) ON RAMP FROM BIG BAY ROAD				1	50		1	1	
POPE COUNTY										
POPE #1	IL 146 AT MILEPOST 6.10		37.5			37.5		1		
POPE #2	IL 145 AT IL 146 OVERPASS		112.5			112.5		2		
POPE #3	IL 145 AT MILEPOST 3.00		37.5			37.5		1		
PULASKI COUNTY										
PULASKI #1	IL 37 AT MILEPOST 8.00 STRUCTURE 077-0037		12.5			12.5				
PULASKI #2	I-57 NORTHBOUND AT MP 5.75 STRUCTURE 077-0001		12.5			12.5				
UNION COUNTY										
UNION #1	US 51 SB AT MP 14.3 JUST S OF SPANISH BLUFF RD	TERMINAL REPAIR					1			
UNION #2	US 51 NB 0.25 MILE SOUTH OF DEPPER ROAD		150			150		3		150
UNION #3	I-57 SB AT MILEPOST 27.2		150			150		3		150
UNION #4	I-57 SB AT MILEPOST 27.1		37.5			37.5		1		
TOTALS			962.5	1	1	1062.5	1	25	3	300

RTE	SECTION	COUNTY	TOTAL SHEETS	SHEET NO
VAR	#	VARIOUS	14	5
STA.	TO STA.			
FED. ROAD DIST. NO.	ALIGNED	FED. AID PROJECT		

* D-9 CONT. MAINT. FY 06-5

TIMBER CURB DETAIL



SECTION A

GENERAL NOTES:

THE TIMBER CURB SHALL BE TREATED IN ACCORDANCE WITH ARTICLE 1007.12 OF THE STANDARD SPECIFICATIONS AND SATISFY THE CATEGORY FOR SIGN POSTS - SAWN FOUR SIDES.

THE TIMBER CURB SHALL BE 4 INCH X 12 INCH (NOMINAL DIMENSIONS.)

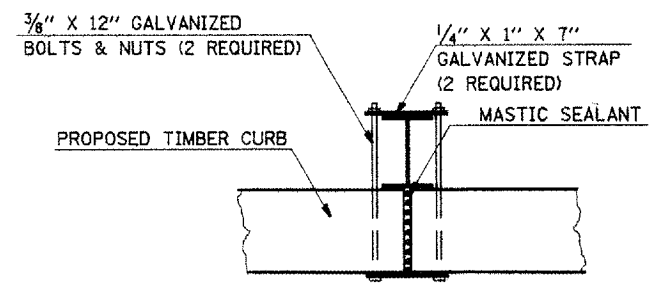
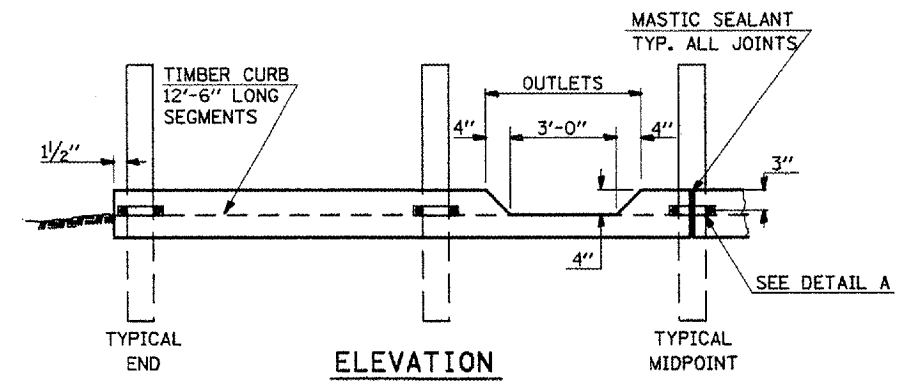
THE GALVANIZED STRAP, BOLTS, AND NUTS SHALL NOT BE PAID FOR SEPARATELY BUT SHALL BE INCLUDED IN THE COST OF THE TIMBER CURB.

ALL CUTS, ABRASIONS AND HOLES MADE AFTER TREATMENT TO THE TIMBER CURB SHALL BE REPAIRED IN ACCORDANCE WITH ARTICLE 1007.12 OF THE STANDARD SPECIFICATIONS.

ALL TIMBER SPLICES SHALL BE MADE AT GUARDRAIL POSTS, SEE DETAIL A AND ELEVATION THIS SHEET.

OUTLET LOCATIONS WILL BE AS DIRECTED BY THE ENGINEER.

① PROPOSED TIMBER CURB

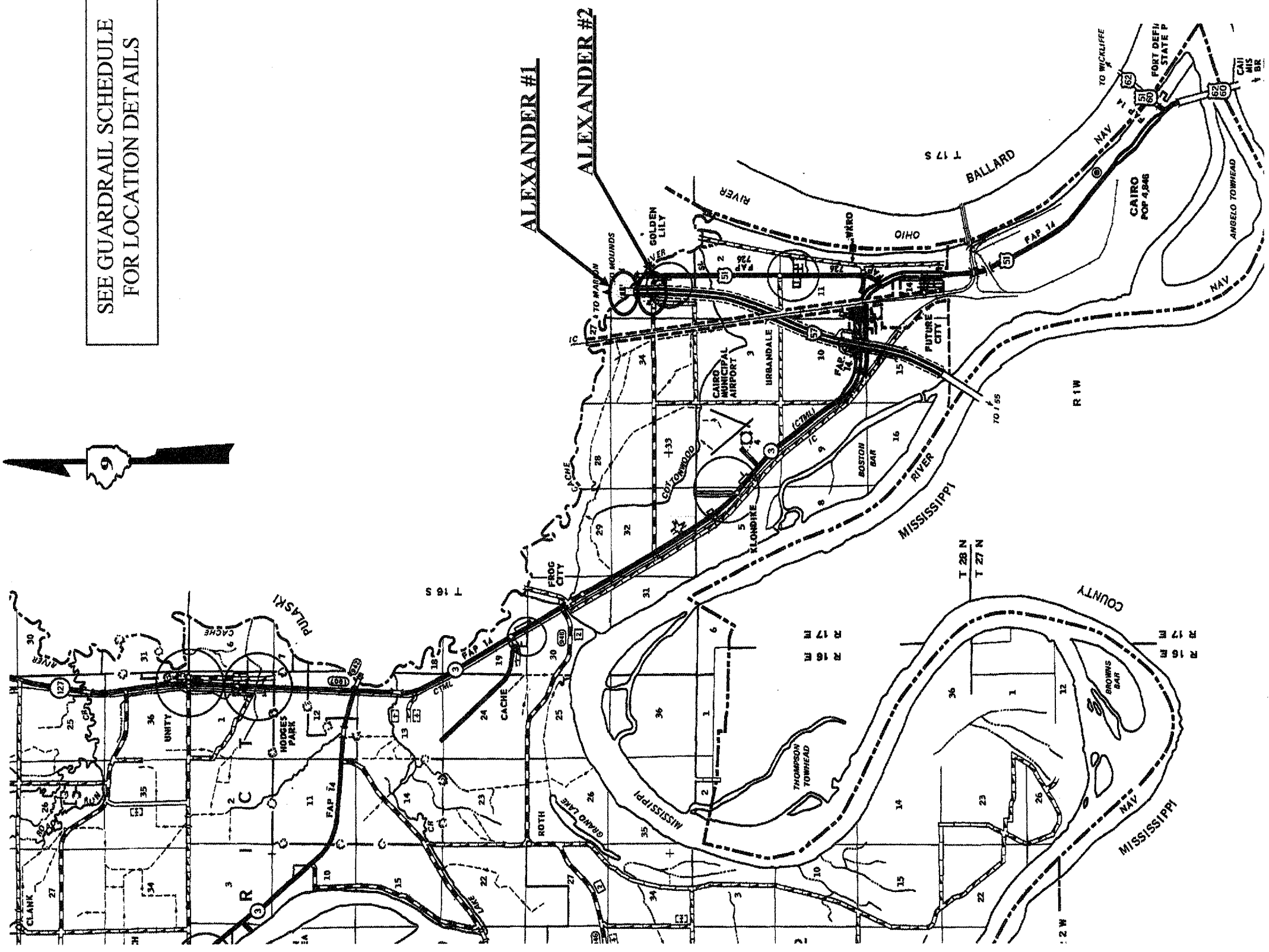


DETAIL A

LOCATION MAP

ALEXANDER COUNTY
FAI 57 (I-57)

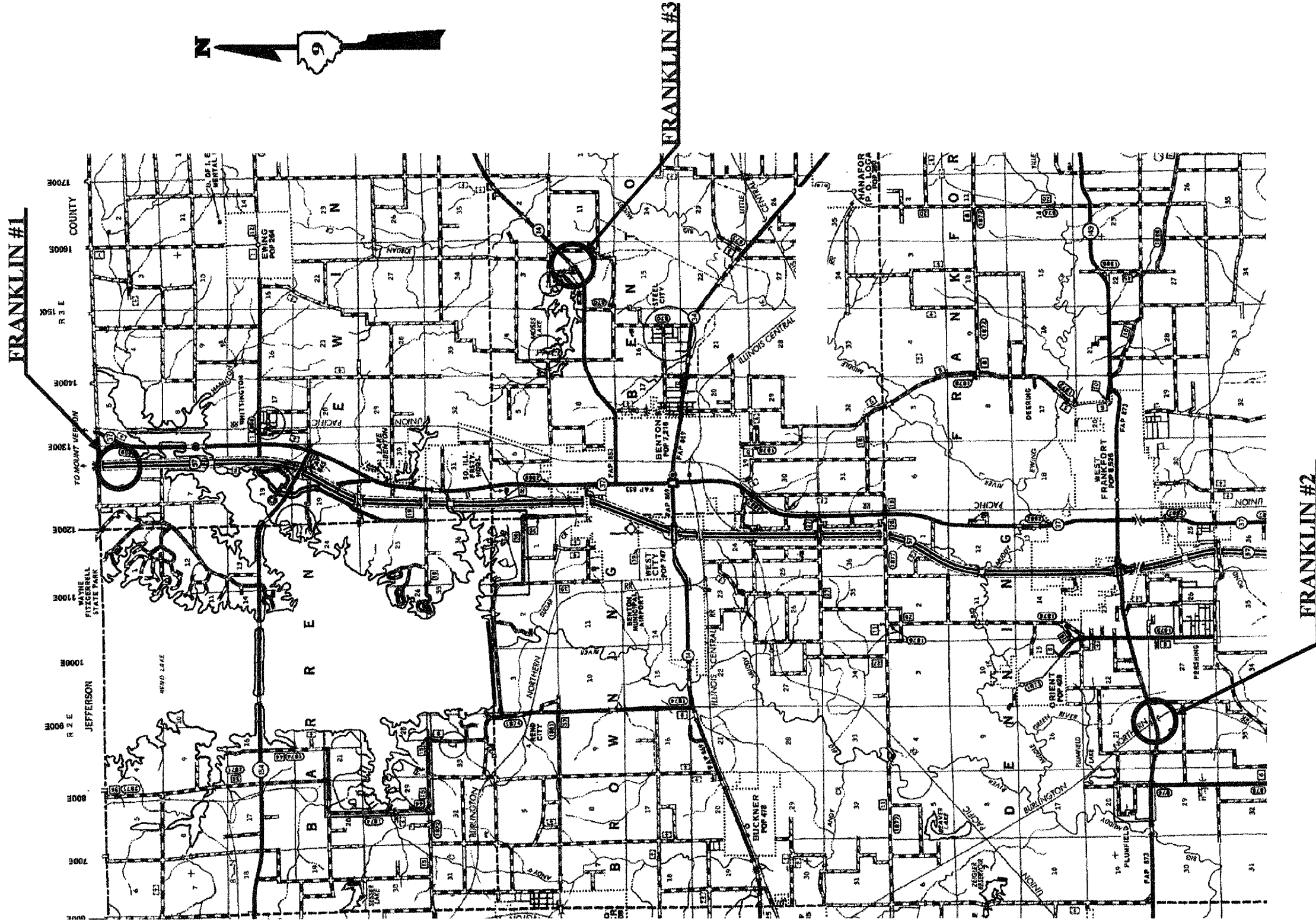
SEE GUARDRAIL SCHEDULE
FOR LOCATION DETAILS



VARIOUS
D-9 CONT. MAINT. FY 06-5
VARIOUS CO.
CONTRACT # 98917
SHEET 6 OF 14

LOCATION MAP

FRANKLIN COUNTY
I-57, IL 14, & IL 149

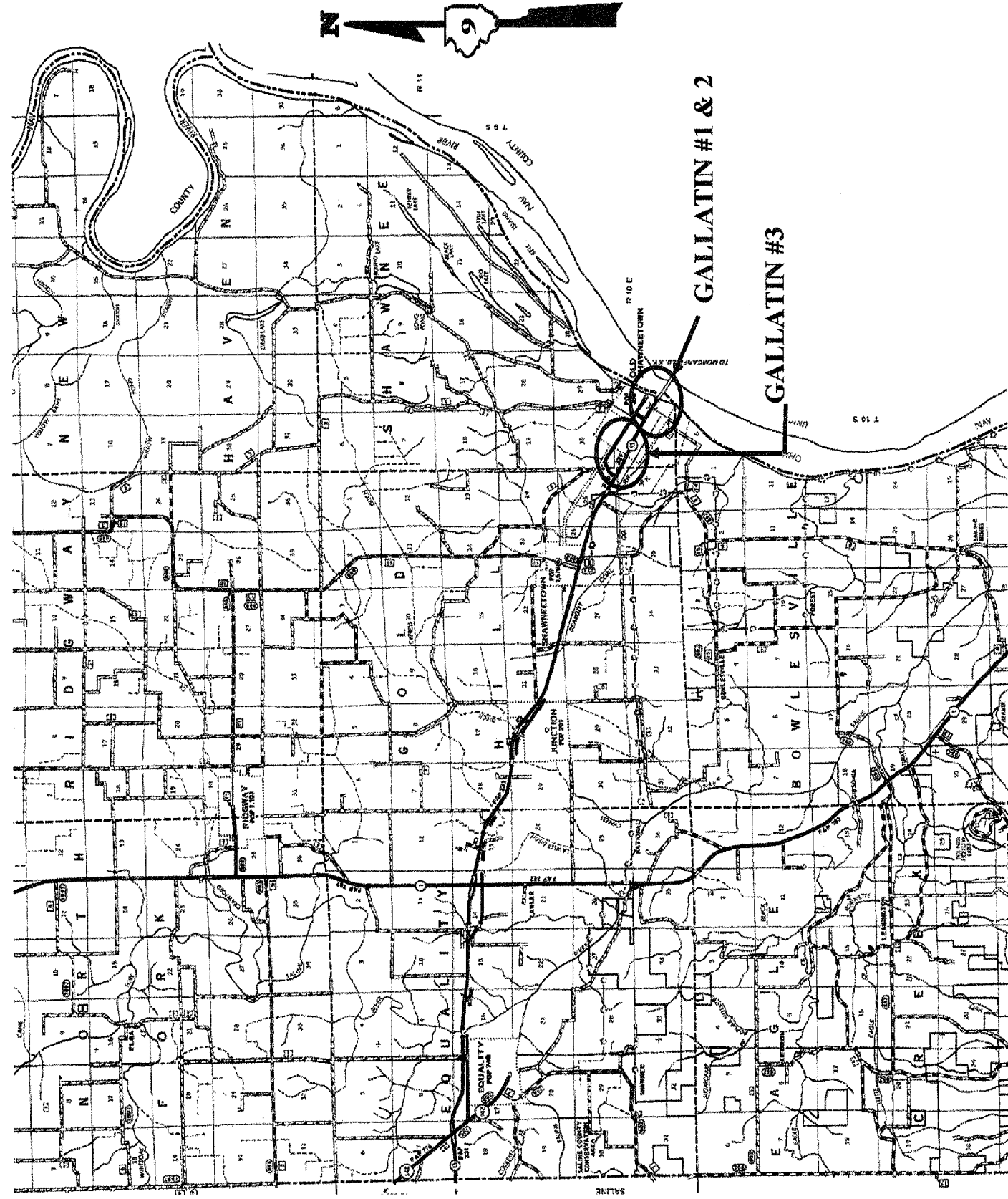


SEE GUARDRAIL SCHEDULE
FOR LOCATION DETAILS

VARIOUS
D-9 CONT. MAINT. FY 06-5
VARIOUS CO.
CONTRACT # 98917
SHEET 7 OF 14

LOCATION MAP

GALLATIN COUNTY
ILLINOIS 13

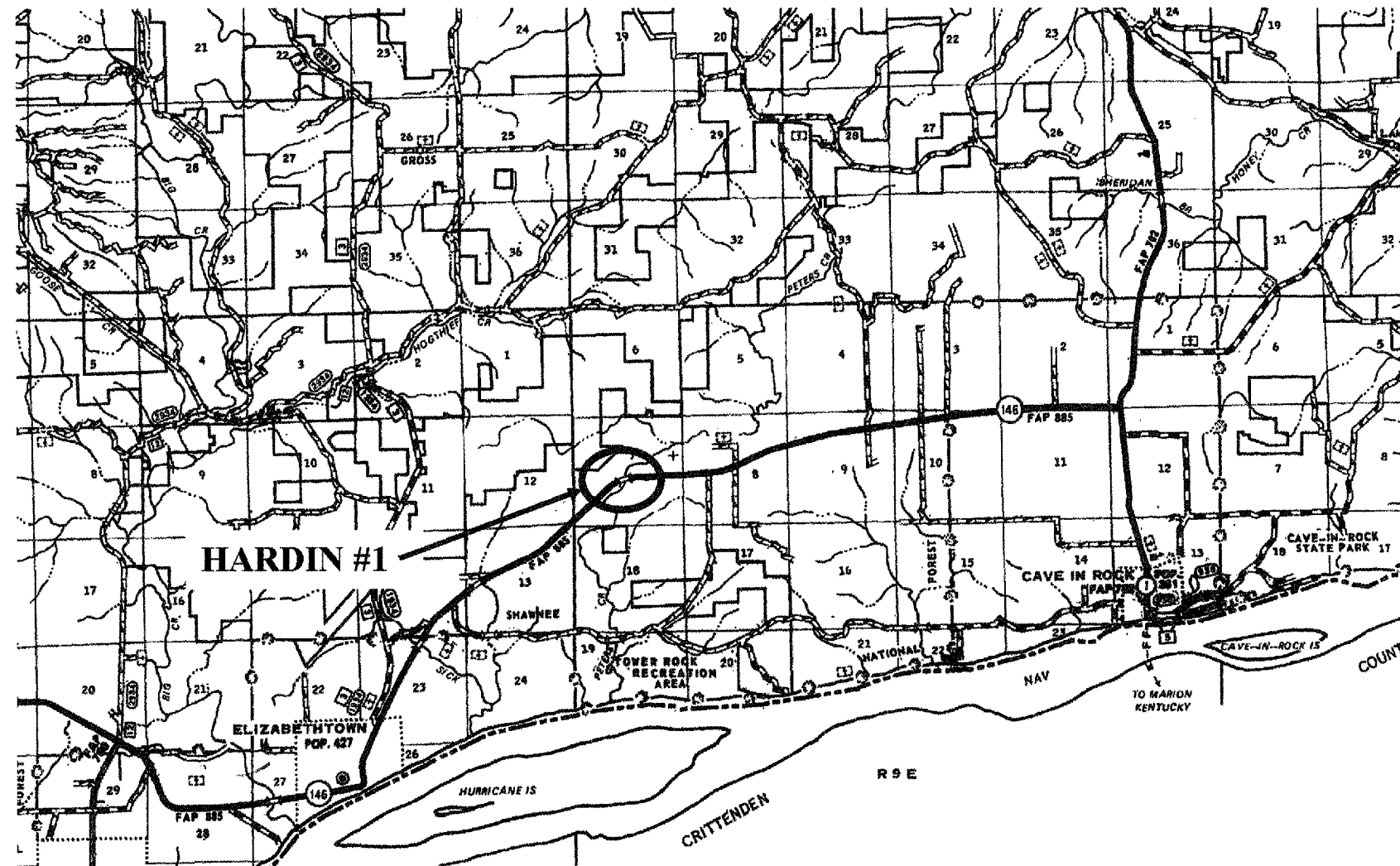


SEE GUARDRAIL SCHEDULE
FOR LOCATION DETAILS

VARIOUS
D-9 CONT. MAINT. FY 06-5
VARIOUS CO.
CONTRACT # 98917
SHEET 8 OF 14

LOCATION MAP

HARDIN COUNTY
ILLINOIS 146

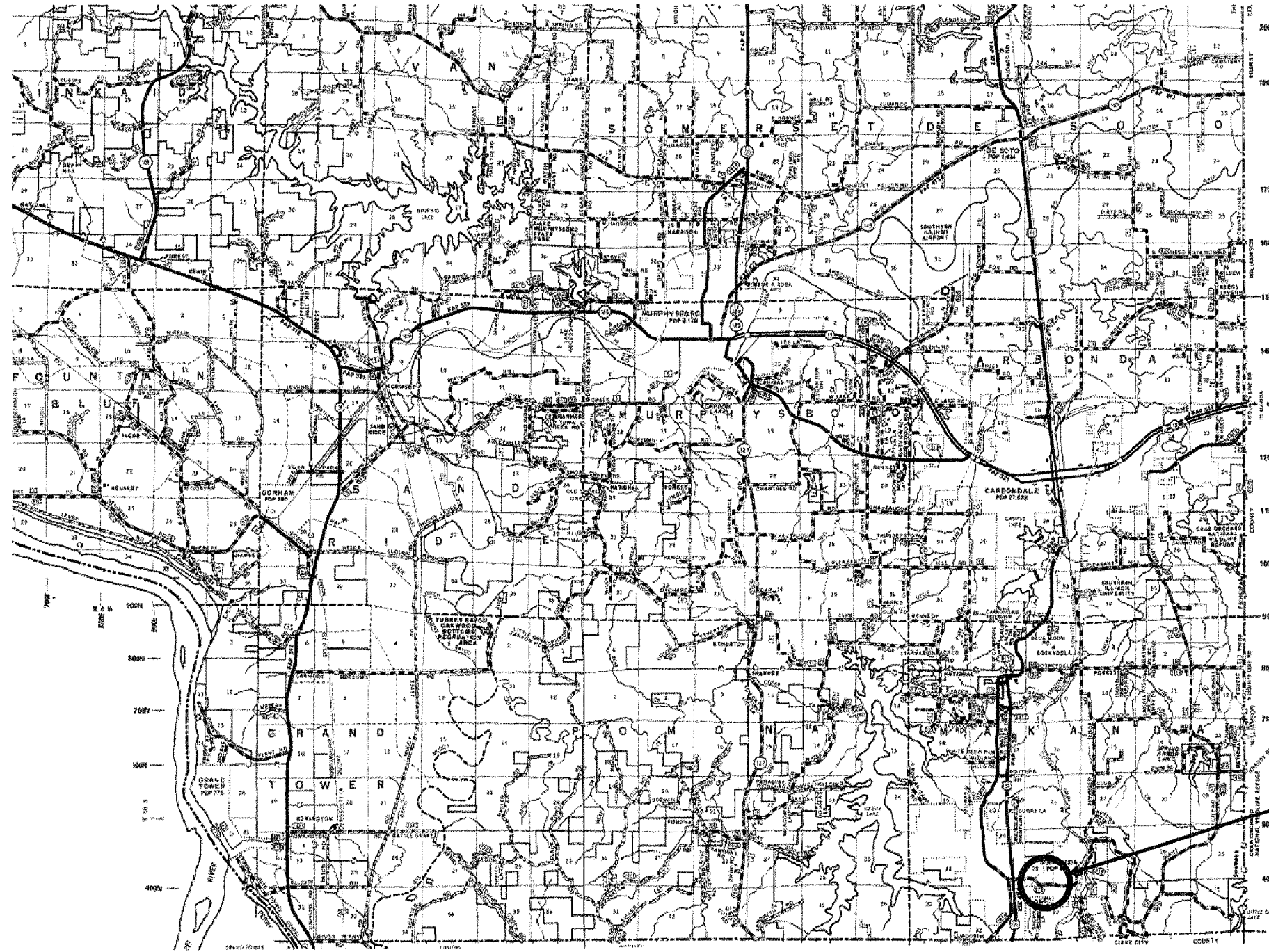


SEE GUARDRAIL SCHEDULE
FOR LOCATION DETAILS

LOCATION MAP

JACKSON COUNTY
MAKANDA ROAD

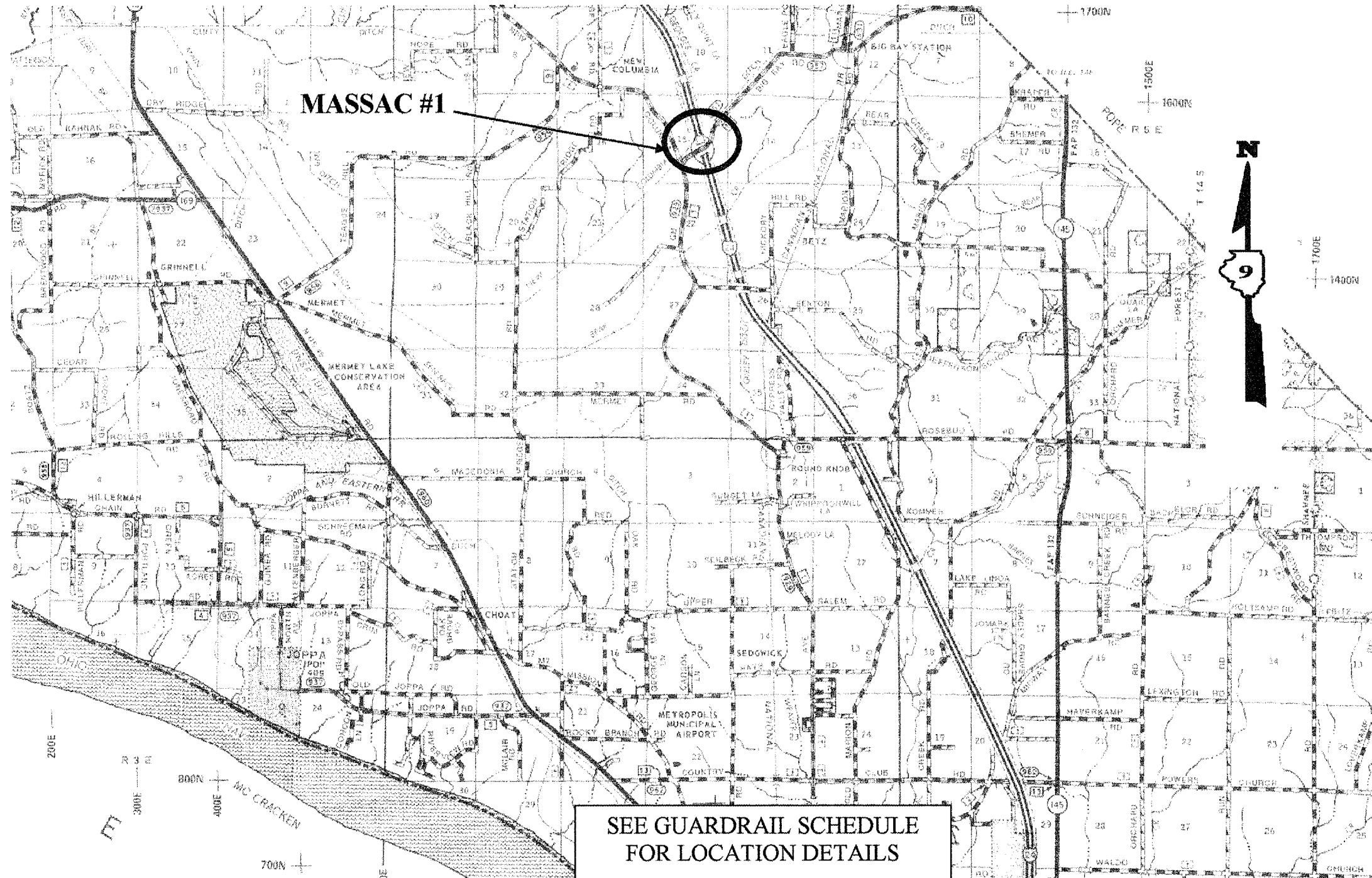
SEE GUARDRAIL SCHEDULE
FOR LOCATION DETAILS



JACKSON #1

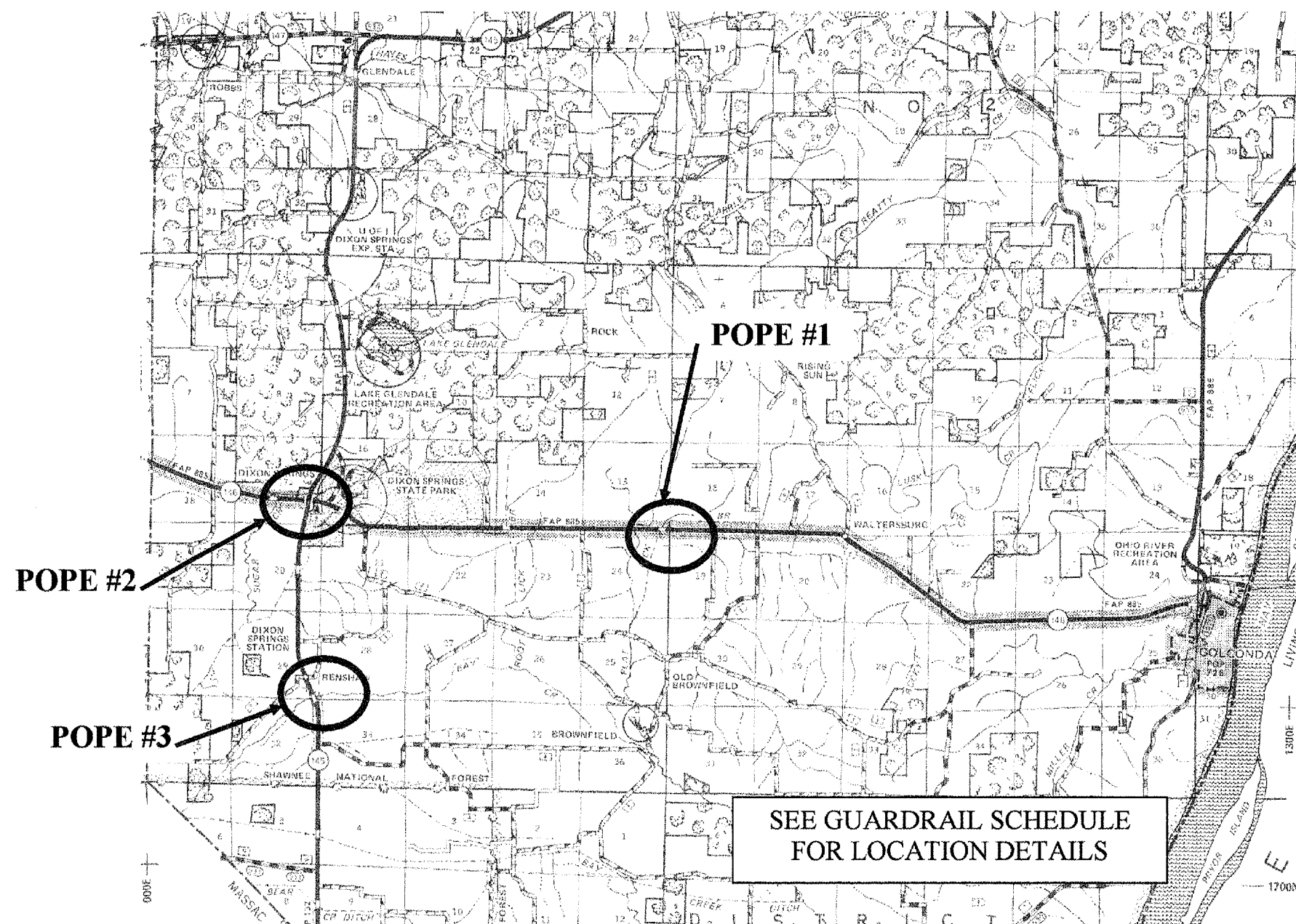
LOCATION MAP

MASSAC COUNTY
FAI 24 (I-24)



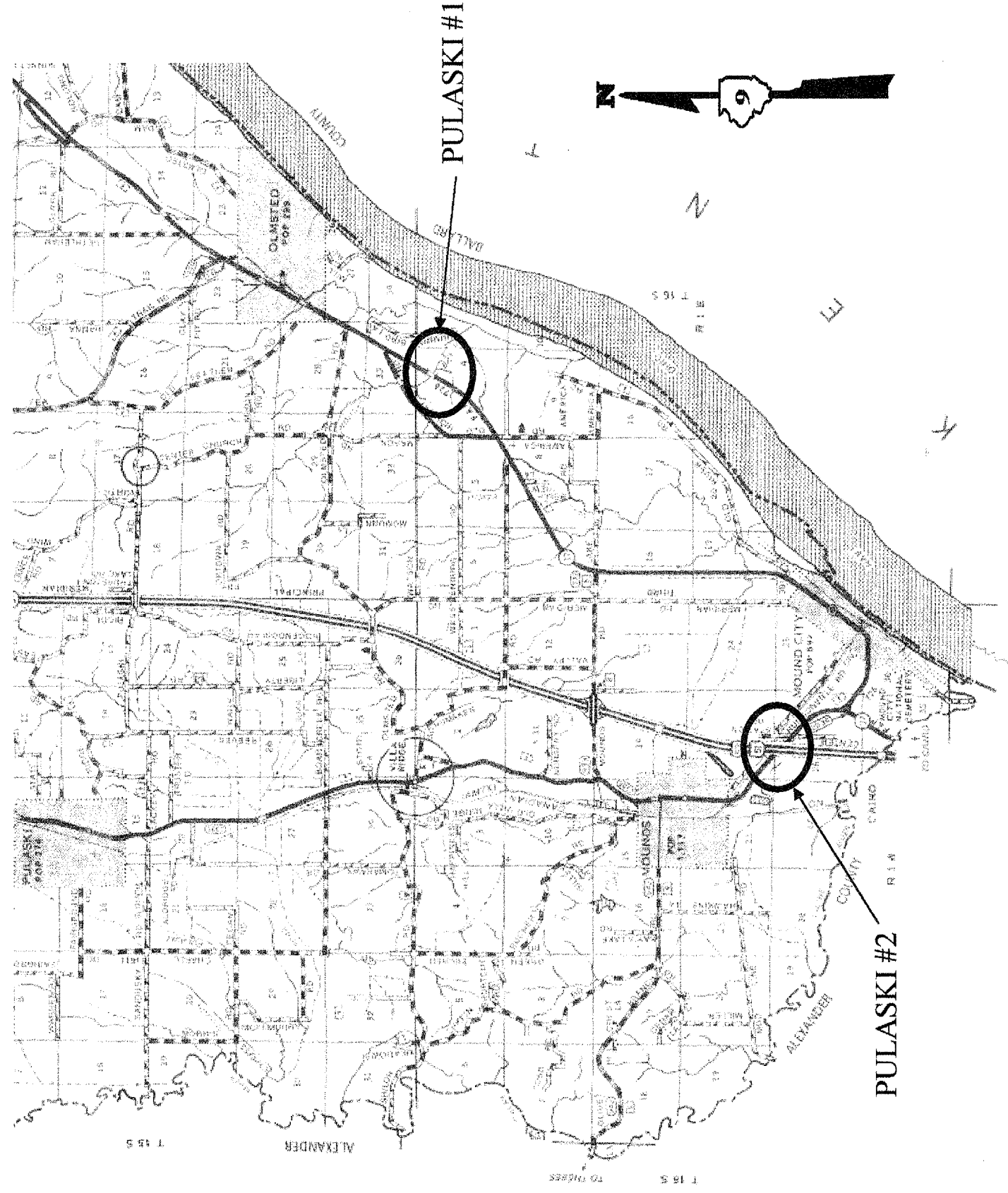
LOCATION MAP

POPE COUNTY
ILLINOIS 146
ILLINOIS 145



LOCATION MAP

PULASKI COUNTY
ILLINOIS 37
FAI 57 (I-57)

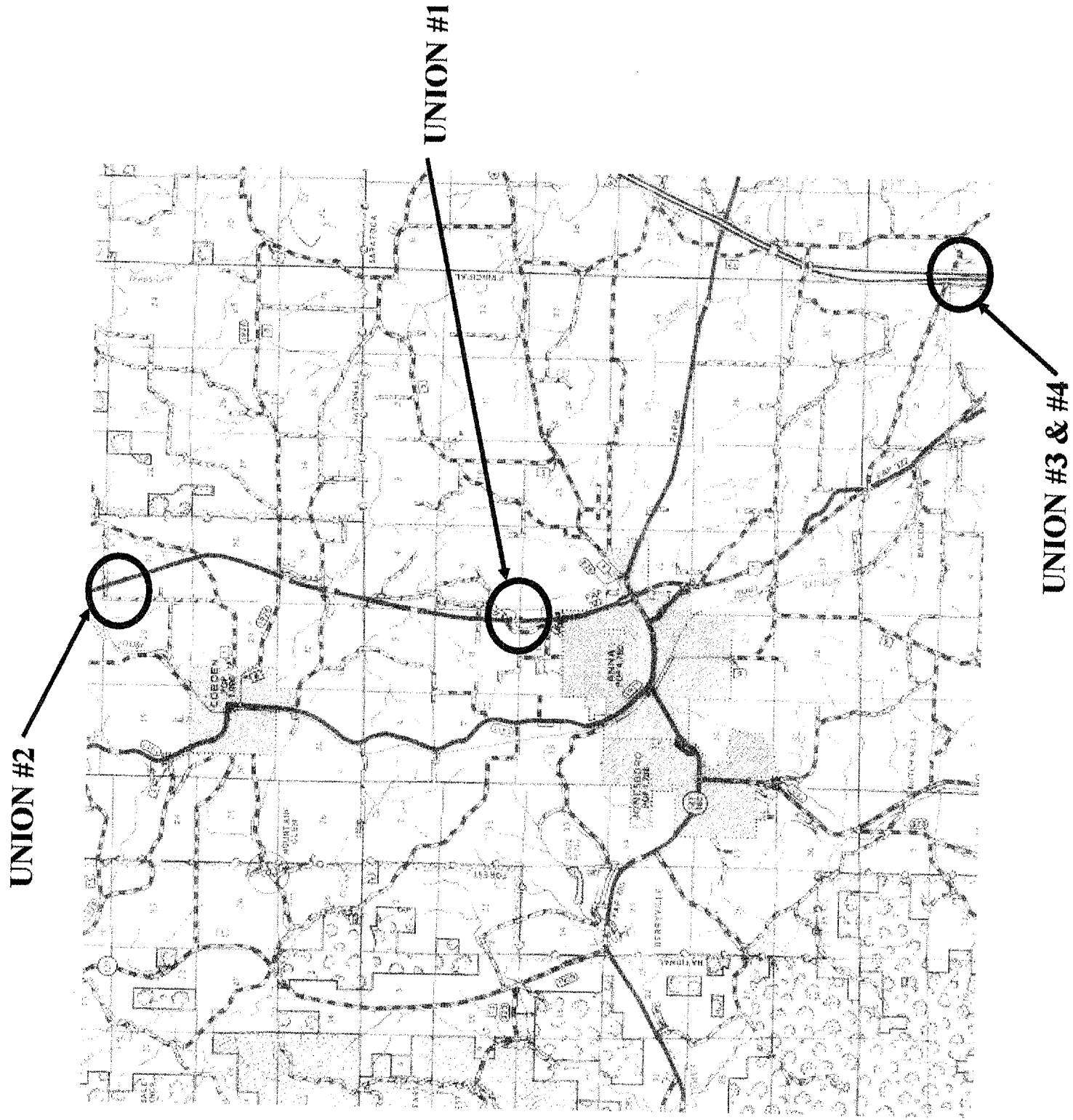


SEE GUARDRAIL SCHEDULE
FOR LOCATION DETAILS

VARIOUS
D-9 CONT. MAINT. FY 06-5
VARIOUS CO
CONTRACT # 98917
SHEET 13 OF 14

LOCATION MAP

UNION COUNTY
US 51 & I-57



SEE GUARDRAIL SCHEDULE
FOR LOCATION DETAILS

VARIOUS
D-9 CONT. MAINT. FY 06-5
VARIOUS CO.
CONTRACT # 98917
SHEET 14 OF 14