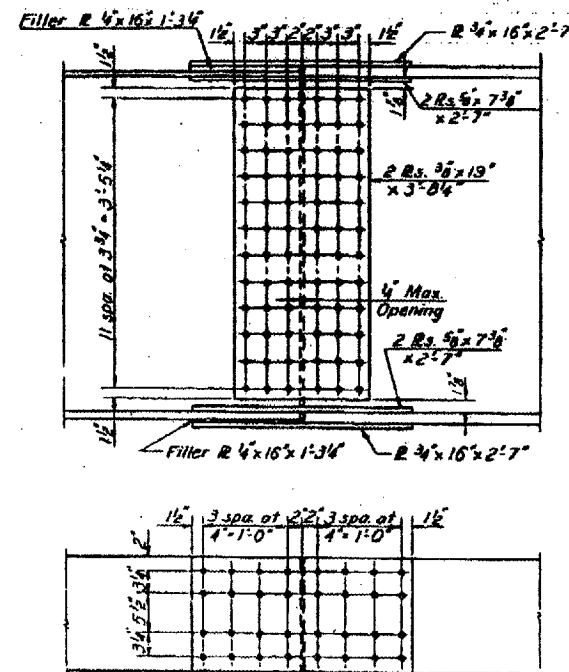
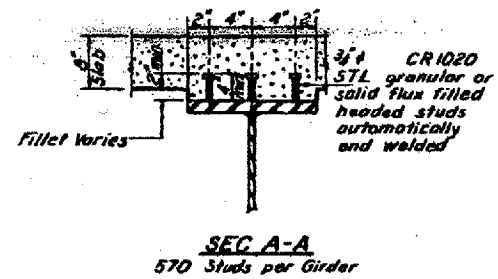


ELEVATION



SPLICES
 8 1/2" S Bolts

| | 0.4 Sp. 1 or 0.8 Sp. 3 | Pier 1 or Pier 2 | 0.5 Sp. 2 |
|--------------------------------|------------------------|------------------|-----------|
| I_s (in ⁴) | 19347 | 54503 | 19347 |
| I_c (in ⁴) | 52282 | | 52282 |
| S_x (in ³) | 995 | 2057 | 995 |
| S_y (in ³) | 1318 | | 1318 |
| E (ksi) | 1028 | 1484 | 1046 |
| M_p (k) | 591 | 2225 | 520 |
| F_s (ksi) | 71 | 13.0 | 6.3 |
| S_e (in ³) | .447 | | .447 |
| M_{sR} (k) | 308 | | 338 |
| M_p (k) | 920 | 935 | 944 |
| M_{imp} (k) | 204 | 207 | 211 |
| TOTAL (k) | 1432 | 1142 | 1493 |
| $E_s + S_e$ (ksi) | 13.1 | 6.7 | 13.6 |
| S_y TOTAL (in ³) | 20.2 | 19.7 | 19.9 |
| VR (k) | 64.3 | | 56.6 |

TOP OF WEB ELEVATION

| Gir. Loc. | 1 | 2 | 3 | 4 | 5 | 6 |
|------------------|--------|--------|--------|--------|--------|--------|
| E. Brg. N. Abut. | 393.52 | 393.76 | 393.96 | 394.03 | 393.96 | 393.85 |
| E. Splice #1 | 393.69 | 393.90 | 394.07 | 394.11 | 394.02 | 393.87 |
| E. Pier #1 | 393.76 | 393.96 | 394.12 | 394.15 | 394.04 | 393.89 |
| E. Splice #2 | 393.83 | 394.01 | 394.17 | 394.18 | 394.07 | 393.90 |
| E. Splice #3 | 393.90 | 394.07 | 394.18 | 394.17 | 394.02 | 393.84 |
| E. Pier #2 | 393.89 | 394.04 | 394.15 | 394.12 | 393.96 | 393.76 |
| E. Splice #4 | 393.87 | 394.02 | 394.11 | 394.07 | 393.90 | 393.69 |
| E. Brg. S. Abut. | 393.85 | 393.97 | 394.03 | 393.96 | 393.77 | 393.52 |

| | Abut. | Pier |
|---------------|-------|-------|
| R_R (k) | 52.1 | 190.4 |
| R_L (k) | 46.5 | 81.4 |
| Imp. (k) | 10.30 | 18.10 |
| R TOTAL (k) | 108.9 | 289.9 |

I_s and S_x are the moment of inertia and section modulus of the steel section.
 I_c and S_y are the moment of inertia and section modulus of the composite section used in computing I_s .
 VR is the maximum $\frac{1}{4}$ Impact shear in span.

The main load carrying member components subject to the Supplemental webs and spl

BRIDGE NO. 1
 039-0048
 FOR INFORMATION ONLY

STRUCTURAL STEEL
 F.A. RT100 SEC.130-IVB
 JACKSON COUNTY
 STATION 247+02.81

| | | | |
|----------|----------------|----------|--------------|
| DESIGNED | Kay M. Baskin | EXAMINED | Jan. 11 1972 |
| CHECKED | James H. Hines | PASSED | |
| DRAWN | R. P. Summer | APPROVED | |
| CHECKED | JP | | |