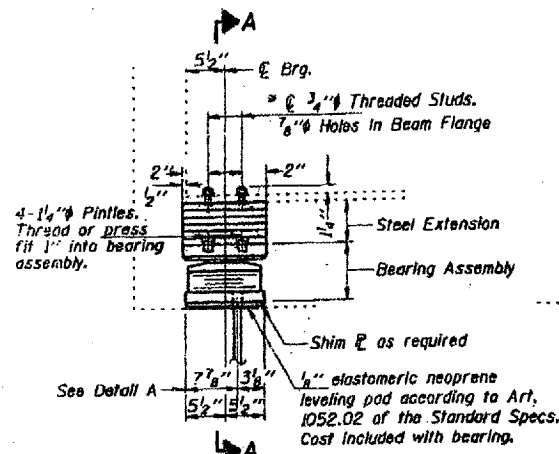


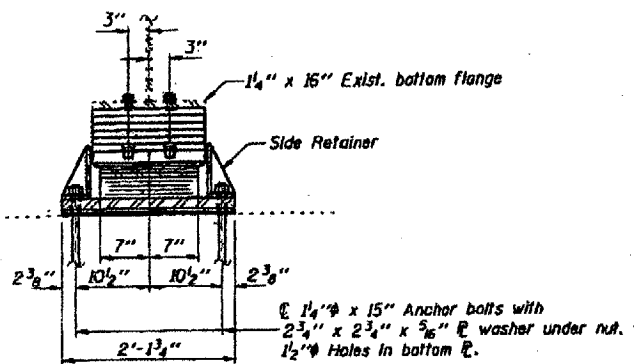
STATE OF ILLINOIS
DEPARTMENT OF TRANSPORTATION

VARIOUS ROUTES
VARIOUS COUNTIES
D-9 BRIDGE PAINTING FY 06-1
CONTRACT 98941
SHEET 10 OF 48

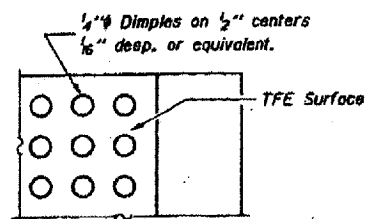


ELEVATION AT N. ABUT.

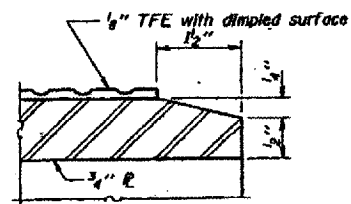
• 3/4" Threaded Studs shall be placed in the field.



SECTION A-A



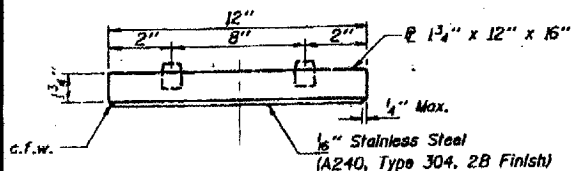
PLAN-TFE SURFACE



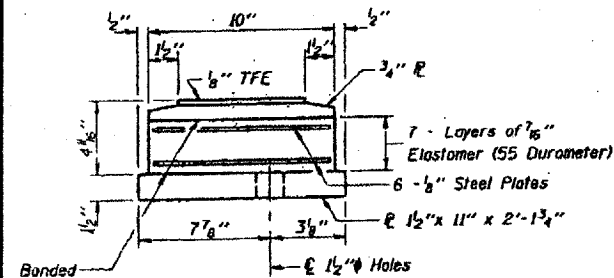
SECTION THRU TFE

Note: The 1/8" TFE sheet shall be bonded directly to the top steel plate with a two-component, medium viscosity epoxy resin, conforming to the requirements of the Federal Specification MMM-A-134, Type I. The bond agent shall be applied on the full area of the contact surfaces.

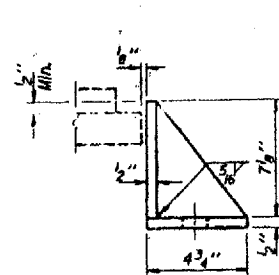
Bonding of 1/8" TFE sheet during vulcanizing process will be permitted provided the process and method of adjusting assembly height is approved by the Engineer.



TOP BEARING ASSEMBLY



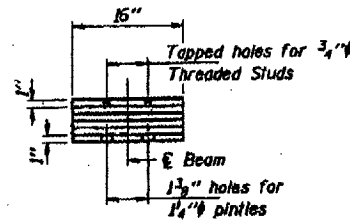
BOTTOM BEARING ASSEMBLY



SIDE RETAINER

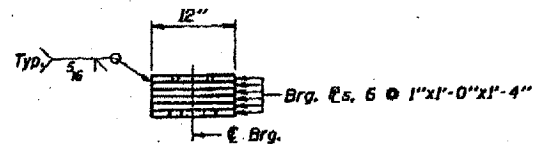
Equivalent rolled angle with stiffeners will be allowed in lieu of welded plates. Weight included with Structural Steel.

REACTIONS		
RR	(K)	52.1
Rk	(K)	46.5
Rl	(K)	10.3
R Total	(K)	108.9



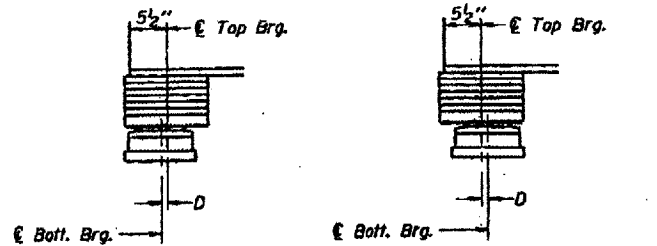
END VIEW STEEL EXTENSION

Note: Prior to ordering any material, the Contractor shall verify in the field all bearing height and shim thickness dimensions.



ELEVATION STEEL EXTENSION

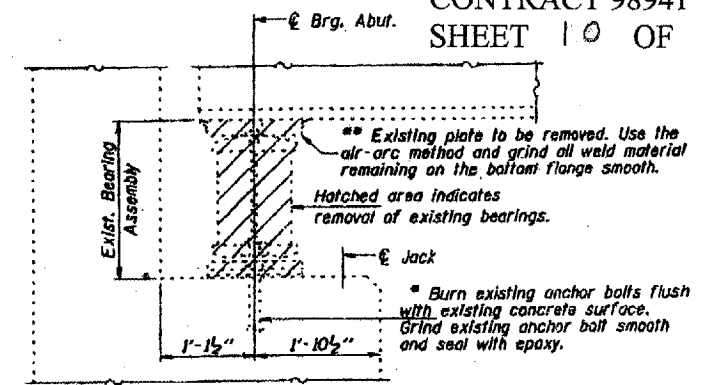
Diaphragm removal & reinstallation may be required to facilitate drilling holes. Cost shall be included in the cost of "Furnishing and Erecting Structural Steel".
New steel extensions, side retainers, shim plates, connection bolts and anchor bolts are included in the cost of "Furnishing and Erecting Structural Steel".
See Sheet 13 of 14 for anchor bolt installation.
Prior to ordering any material, the Contractor shall verify in the field all bearing height and shim thickness dimensions.
Min. Jack capacity = 60 Tons.
Anchor bolts of exist. beams shall be drilled and grouted in place.



BELOW 50°F. (Move bott. brg. away from fixed brg.)
ABOVE 50°F. (Move bott. brg. toward fixed brg.)

SETTING ANCHOR BOLTS AT EXP. BRG.

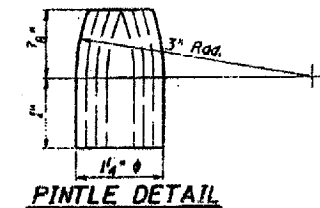
D = 1/8" per each 100' of expansion for every 15° temp. change from the normal temp. of 50°F.



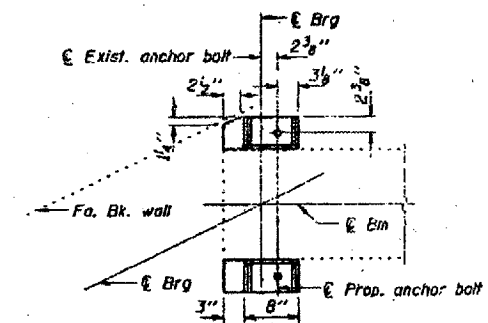
JACK AND REMOVE EXISTING BEARINGS

(Typ. at all abutments)
(Dimensions are at right angles)

** Cost Included in "Jack and Remove Existing Bearing".



PINTLE DETAIL



BRIDGE NO. 1
039-0048
FOR INFORMATION ONLY

Item	Unit	Total
Elastomeric Bearing Assembly Type II	Each	6

NORTH ABUTMENT BEARING DETAILS
FAP ROUTE 312 OVER MISSOURI PACIFIC RAILROAD
JACKSON COUNTY
STATION 247+02.81
STR. NO. 039-0048