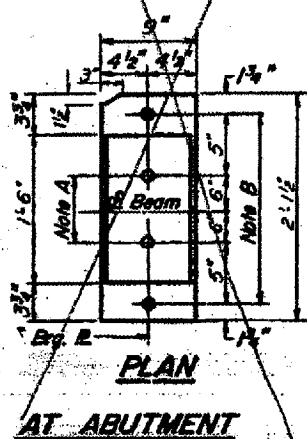
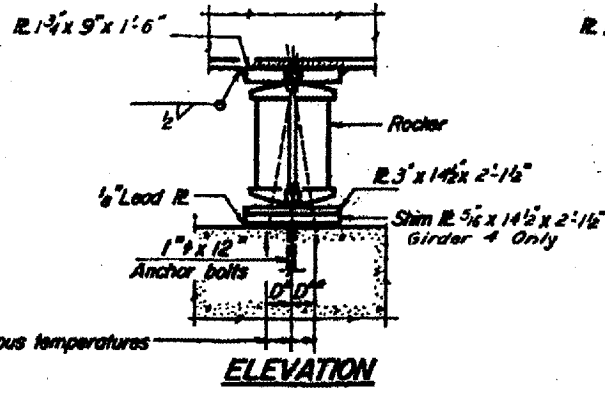


SECTION

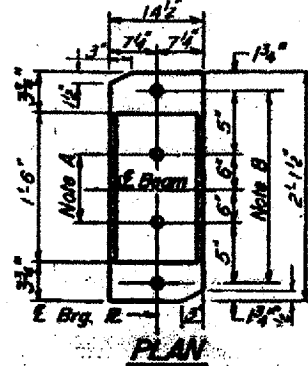


PLAN  
 AT ABUTMENT

**NOTE A**  
 1 1/2" Holes - 1" deep in top R.  
 for pintles. Thread or press fit  
 pintles into bottom R.

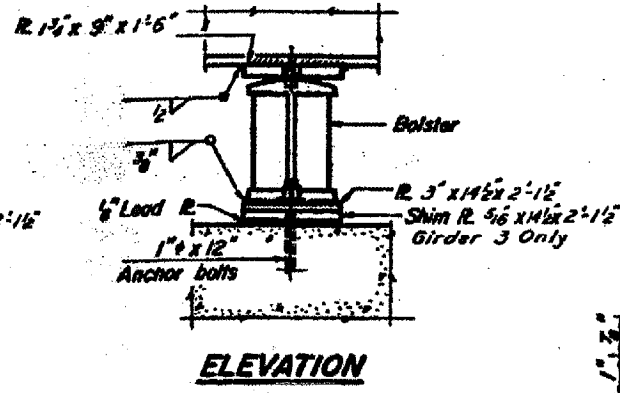


ELEVATION

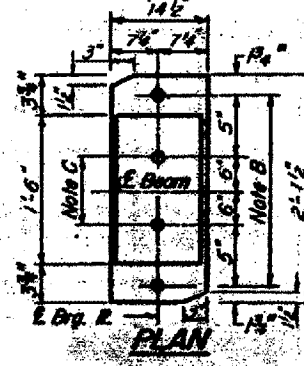


PLAN  
 AT PIER 1

**NOTE B**  
 1 1/2" Holes for 1" anchor bolts  
 1/2 x 2 1/2 x 2 1/2 R. Washers  
 under nut.

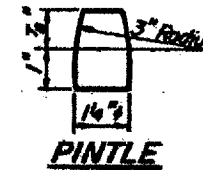


ELEVATION

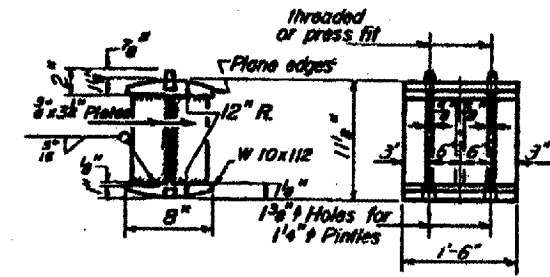


PLAN  
 AT PIER 2

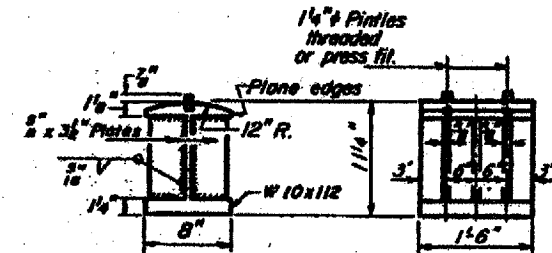
**NOTE C**  
 1 1/2" Holes 1" deep in top R.  
 only for 1 1/2" pintles.



PINTLE



ROCKER



BOLSTER

**NOTES ON SETTING OF ANCHOR BOLTS AT EXP. BRGS.**

- $D^*$  (Side of brg. away from fixed brg.)  
 $D^* = 1/8$ " per each 100' of expansion for  
 every 15" fall below the normal temp.  
 of 50°F.  
 $D^{**}$  (Side of brg. toward fixed brg.)  
 $D^{**} = 1/8$ " per each 100' of expansion for  
 every 15" rise above the normal temp.  
 of 50°F.
- After beams have been erected and dimensions  $D^*$  or  $D^{**}$   
 determined, holes shall be drilled and anchor bolts shall  
 be grouted in place. All fixed anchor bolts may be built  
 into the masonry.

Bearing seat surfaces shall be constructed or adjusted to the designated  
 elevations within a tolerance of 1/8 inch. Adjustment shall be made either by  
 grinding the surface or by shimming the bearing. Two 3/8" adjusting shims, of  
 the dimensions of the bottom bearing plate, shall be provided for each bearing  
 in addition to all other pins.

BRIDGE NO. †  
 039-0048  
 FOR INFORMATION ONLY

DESIGNED <i>May 4 1972</i>	EXAMINED <i>May 11 1972</i>
CHECKED <i>James P. ...</i>	PASSED
R. P. Summer	APPROVED
DRAWN P.G. Barnett	
CHECKED JP	

**BEARING DETAILS**  
 F.A. RT. 100 SEC. 130-IVB  
 JACKSON COUNTY  
 STATION 247+02.81