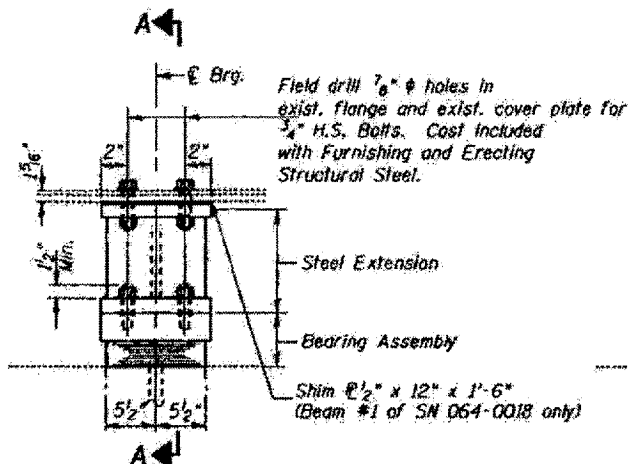
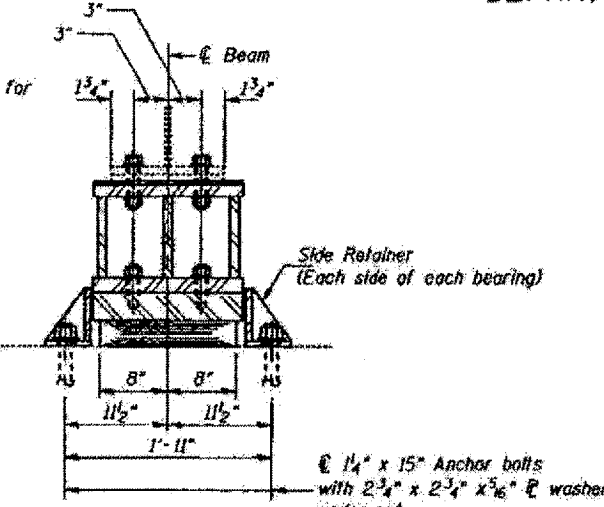


STATE OF ILLINOIS
DEPARTMENT OF TRANSPORTATION

VARIOUS ROUTES
VARIOUS COUNTIES
D-9 BRIDGE PAINTING FY 06-1
SHEET 17 OF 48
CONTRACT 98941

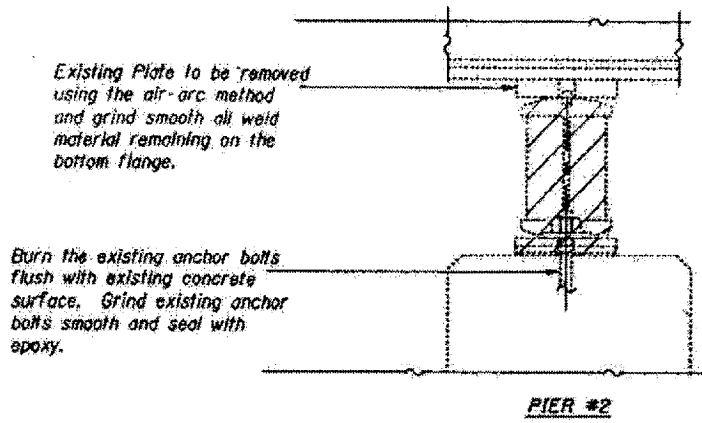


ELEVATION AT PIER #2



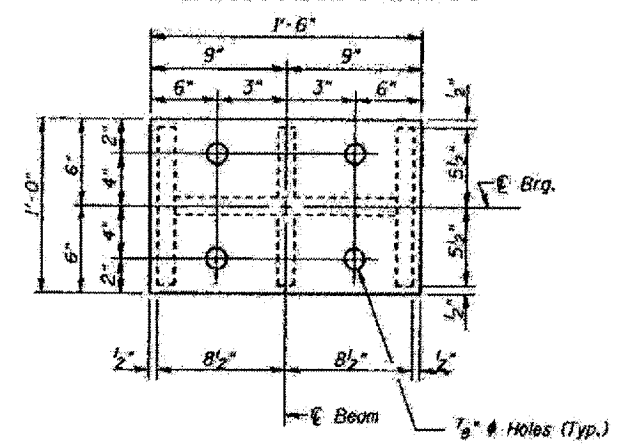
SECTION A-A

Notes: See sheet 151 for Anchor Bolt Installation.

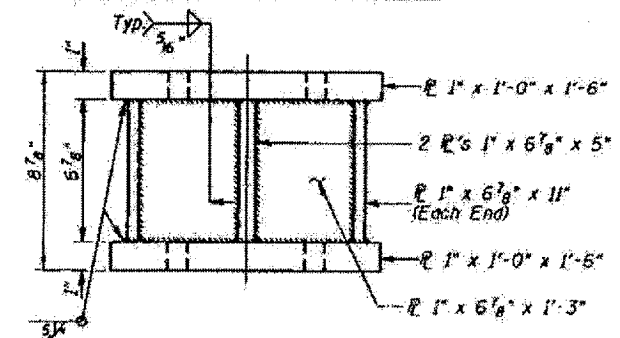


EXISTING BEARING REMOVAL DETAILS

Cost is included with Jack and Remove Existing Bearings

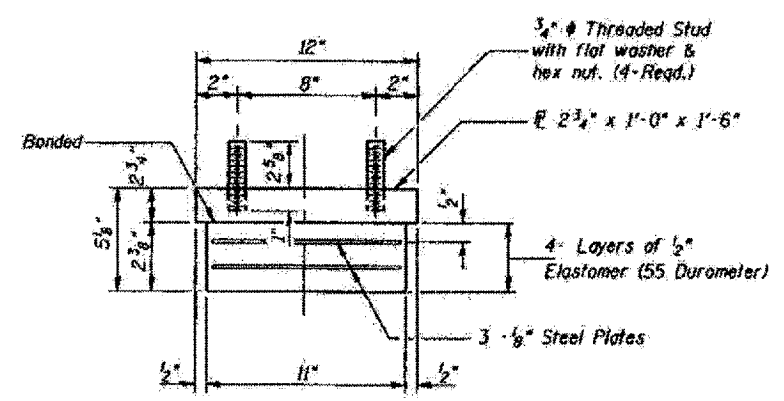


PLAN-TOP & BOTTOM PLATE



STEEL EXTENSION AT PIER #2

TYPE I ELASTOMERIC EXP. BRG.



BEARING ASSEMBLY

Note: Shim plates shall not be placed under Bearing Assembly.

GIRDER REACTIONS

RP	(K)	75.52
R ₁	(K)	44.58
Imp.	(K)	13.37
R (Total)	(K)	133.47

Notes:

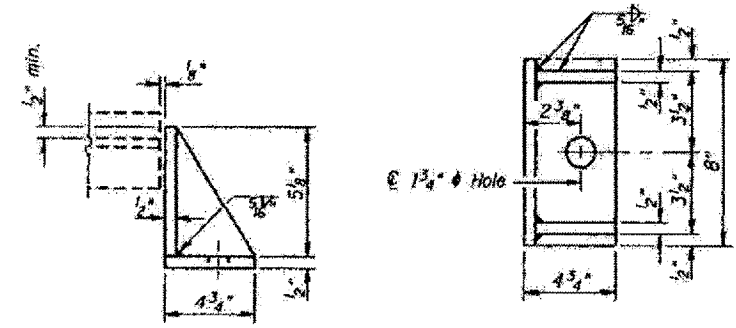
Prior to ordering any material, the Contractor shall verify in the field all bearing height and shim thickness dimensions. The minimum jock capacity required is 75 Tons. New steel extensions, side retainers, connection bolts, any shim and anchor bolts are included in "Furnishing and Erecting Structural Steel". Hatched areas indicate Jack and Remove Existing Bearings. Existing diaphragm removal and new diaphragm erection shall be coordinated with drilling holes in bottom flange for bearing attachment, if necessary, to provide clearance for the drill.

BILL OF MATERIAL

Item	Unit	Total
Elastomeric Bearing Assembly Type I	Each	12
Jack and Remove Existing Bearings	Each	12

SIDE RETAINER

Equivalent rolled angle with stiffeners will be allowed in lieu of welded plates. Weight included with Furnishing and Erecting Structural Steel.



DESIGNED:	CMW
CHECKED:	TWH
DRAWN:	CMW
CHECKED:	TWH

BRIDGES NO. 2 AND NO. 3
STRUCTURES 064-0017 064-0018
FOR INFORMATION ONLY

PIER #2
TYPE I ELASTOMERIC BEARING
MASSAC COUNTY
S.N. 064-0017 (M.B.)
S.N. 064-0018 (E.B.)
84L22-L3-1.3185-1 BSMRT FY2002-2