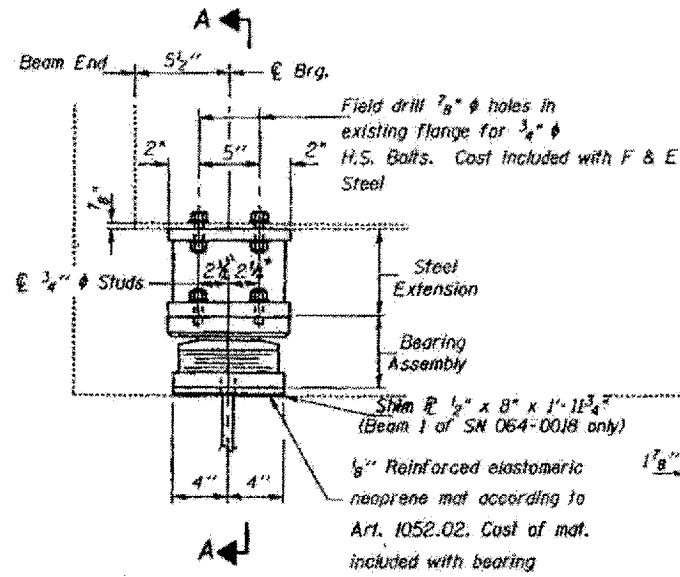
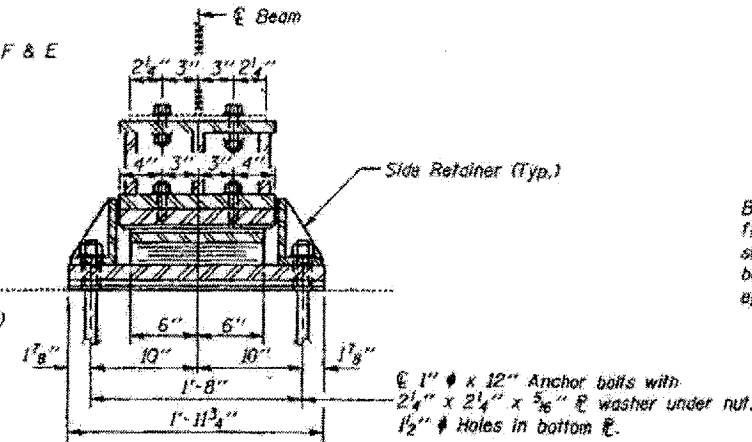


STATE OF ILLINOIS
DEPARTMENT OF TRANSPORTATION

VARIOUS ROUTES
VARIOUS COUNTIES
D-9 BRIDGE PAINTING FY 06-1
SHEET 19 OF 48
CONTRACT 98941



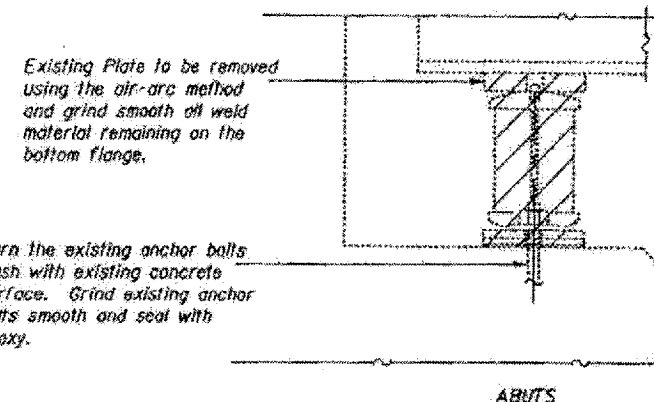
ELEVATION AT E. ABUT.



SECTION A-A

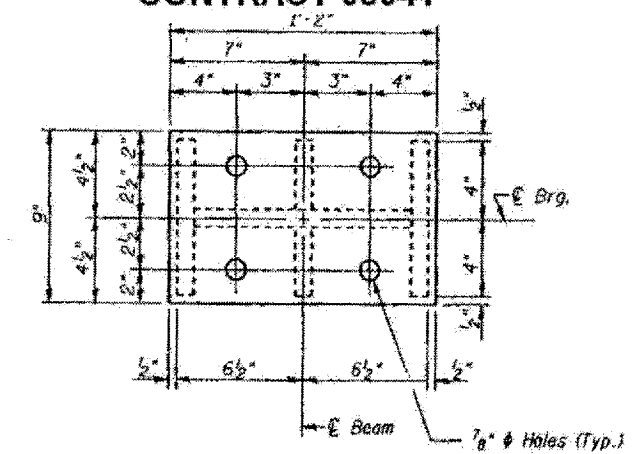
TYPE II TFE ELASTOMERIC EXP. BRG.

Notes: See sheet 151 for Anchor Bolt Installation.

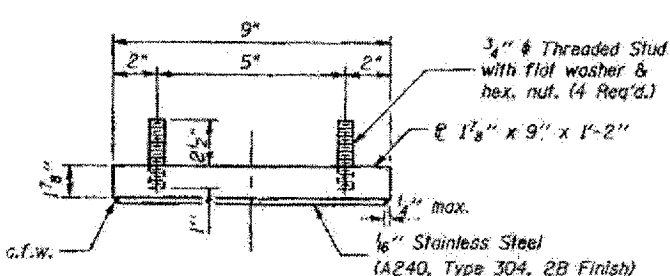


EXISTING BEARING REMOVAL DETAIL

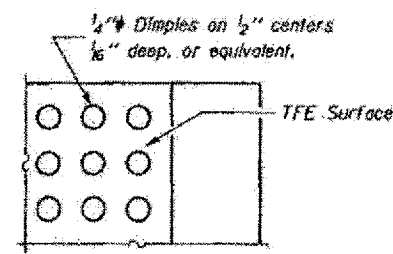
Cost is included with Jack and Remove Existing Bearings



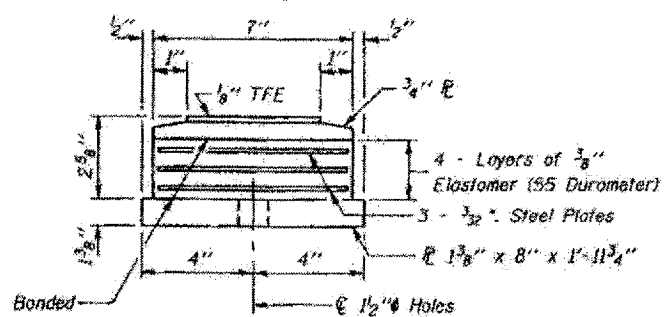
PLAN-TOP & BOTTOM PLATE



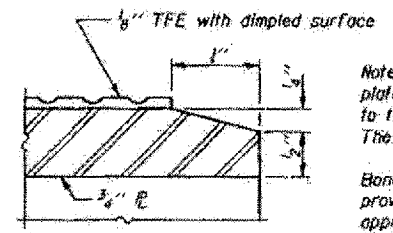
TOP BEARING ASSEMBLY



PLAN-TFE SURFACE



BOTTOM BEARING ASSEMBLY



SECTION THRU TFE

Note: The 1/8" TFE sheet shall be bonded directly to the top steel plate with a two-component, medium viscosity epoxy resin, conforming to the requirements of the Federal Specification MMM-A-134, Type I. The bond agent shall be applied on the full area of the contact surfaces.

Bonding of 1/8" TFE sheet during vulcanizing process will be permitted provided the process and method of adjusting assembly height is approved by the Engineer.

Notes:

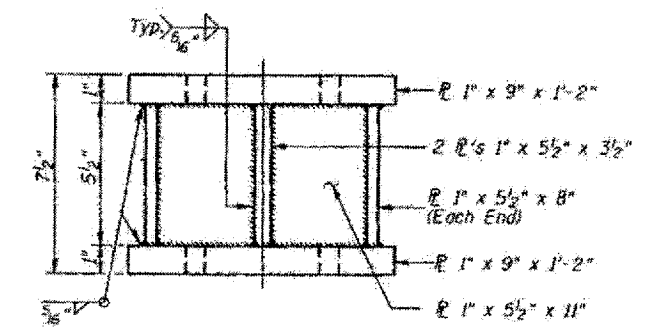
Prior to ordering any material, the Contractor shall verify in the field all bearing height and shim thickness dimensions. The minimum jack capacity required is 35 Tons.

New steel extensions, side retainers, connection bolts, any shim and anchor bolts are included in "Furnishing and Erecting Structural Steel".

Hatched areas indicate Jack and Remove Existing Bearings. Existing diaphragm removal and new diaphragm erection shall be coordinated with drilling holes in bottom flange for bearing attachment, if necessary, to provide clearance for the drill.

GIRDER REACTIONS

RP	(K)	21.81
RL	(K)	35.36
Imp.	(K)	10.61
R (Total)	(K)	67.78



STEEL EXTENSION AT EAST ABUT.

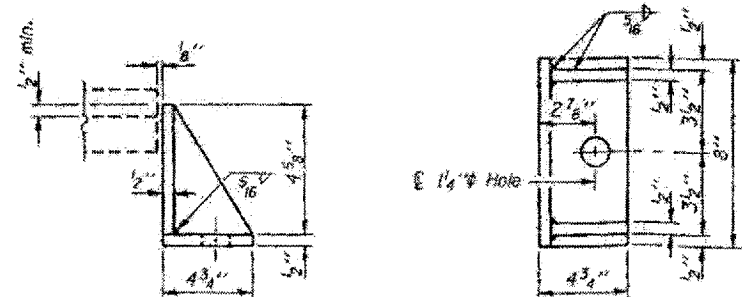
BILL OF MATERIAL

Item	Unit	Total
Elastomeric Bearing Assembly Type II	Each	12
Jack and Remove Existing Bearings	Each	12

BRIDGES NO. 2 AND NO. 3
STRUCTURES 064-0017 064-0018
FOR INFORMATION ONLY

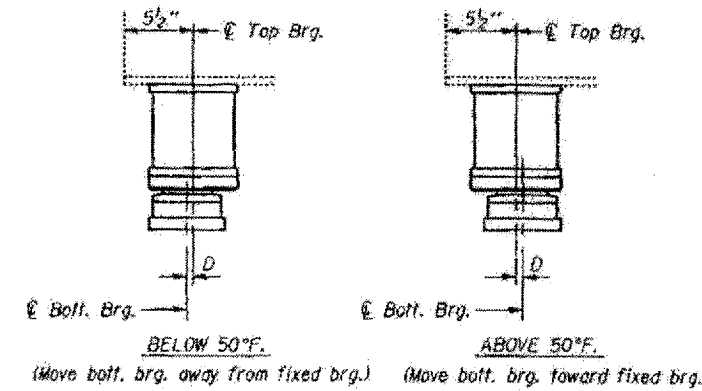
EAST ABUTMENT
TYPE II ELASTOMERIC BEARING
MASSAC COUNTY
S.N. 064-0017 (W.B.)
S.N. 064-0018 (E.B.)
641.02-1.3-1.3RS-1 BSMART FY2002-2

DESIGNED:	CMW
CHECKED:	TWH
DRAWN:	CMW
CHECKED:	TWH



SIDE RETAINER

Equivalent rolled angle with stiffeners will be allowed in lieu of welded plates.



SETTING ANCHOR BOLTS AT EXP. BRG.

D=1/8" per each 100' of expansion for every 15° temp. change from the normal temp. of 50°F.