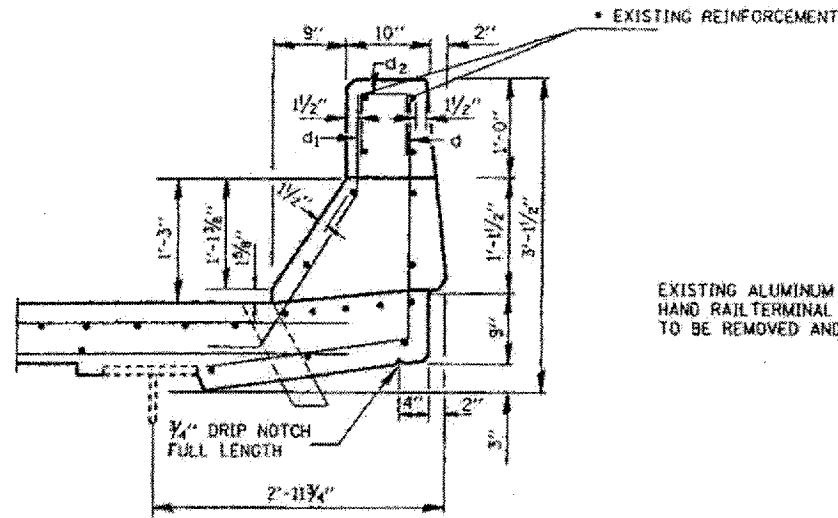
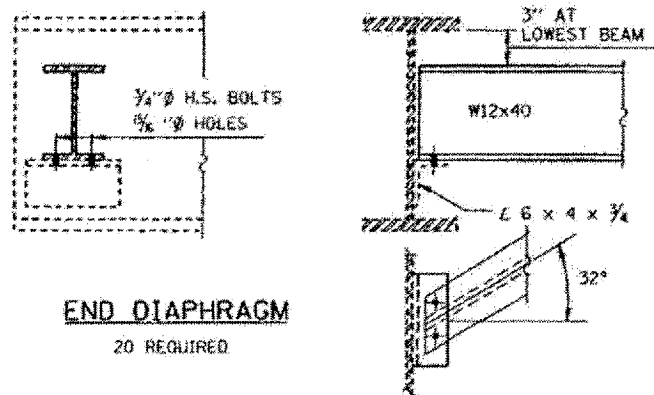


NOTE: d_1 and d_2 (E) BARS SPACED AT 12" CTRS.



SECTION THRU PARAPET

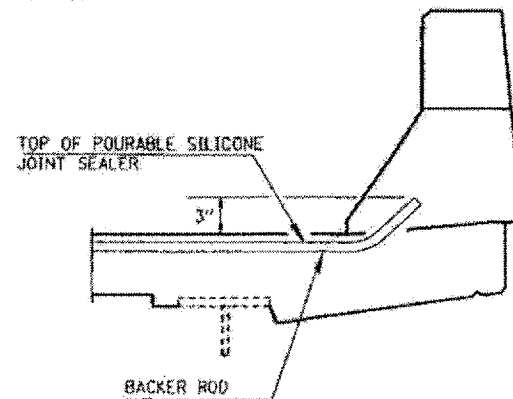
* EXISTING REINFORCEMENT EXTENDING INTO REMOVAL AREA SHALL BE CLEANED, STRAIGHTENED AND INCORPORATED INTO THE NEW CONSTRUCTION. COST INCLUDED IN CONCRETE REMOVAL.



END DIAPHRAGM

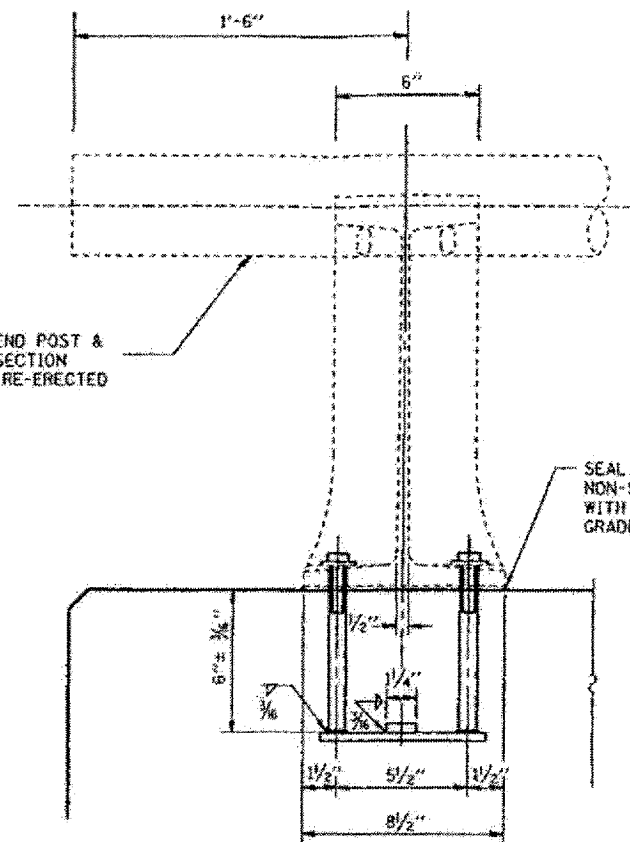
20 REQUIRED

NOTE: TWO HARDENED WASHERS SHALL BE REQUIRED OVER ALL OVERSIZE HOLES FOR DIAPHRAGMS.



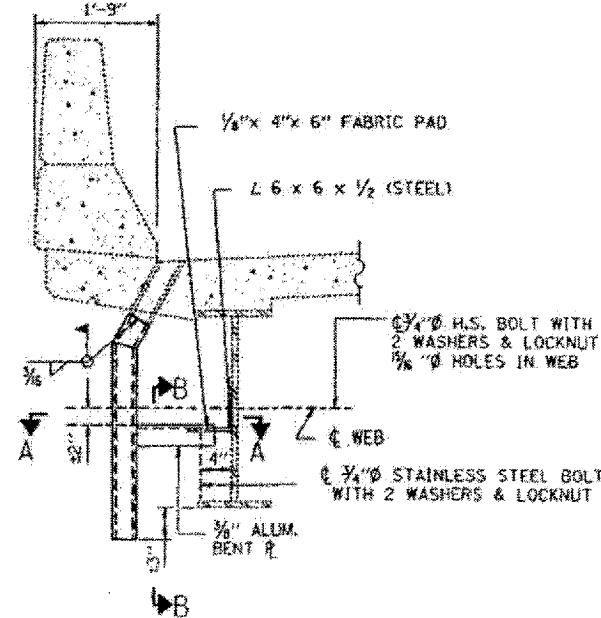
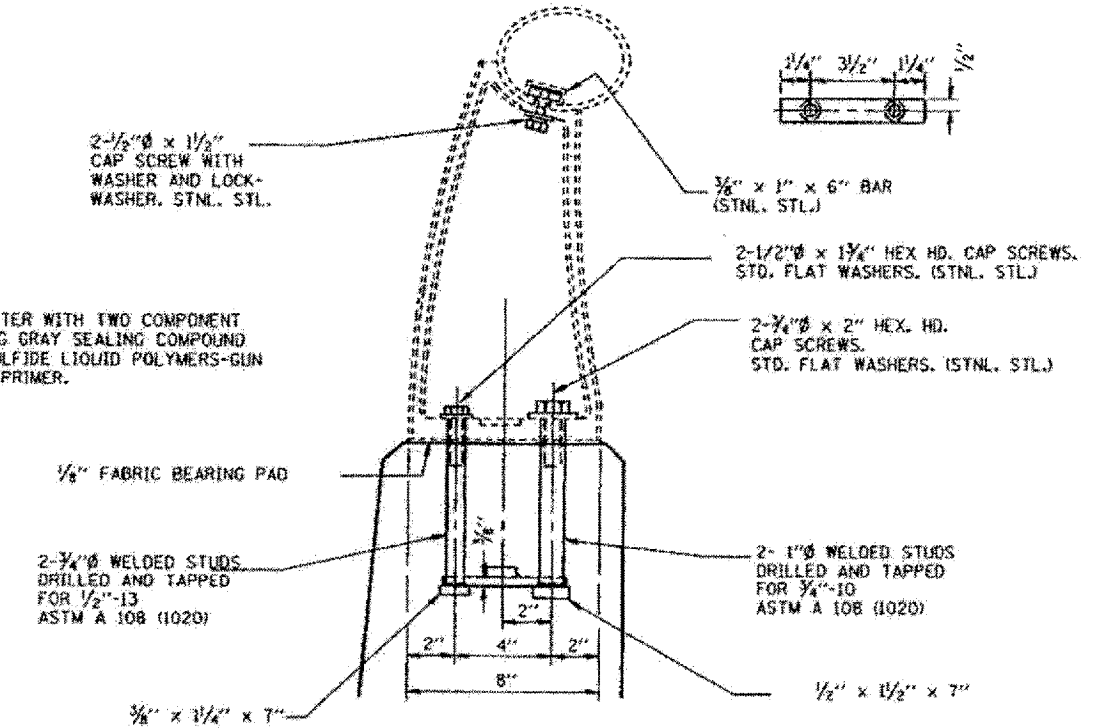
SILICONE SEAL AT PARAPET

DESIGNED	J.C.P.
CHECKED	
DRAWN	T. F.
CHECKED	



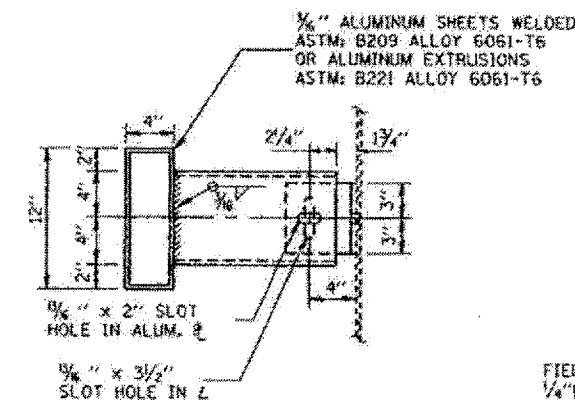
RAIL POST DETAILS

NOTE: RAIL SHALL BE REMOVED AND RE-ERECTED AS NECESSARY TO ALLOW JOINT REPAIR. COST INCLUDED IN CONCRETE REMOVAL.

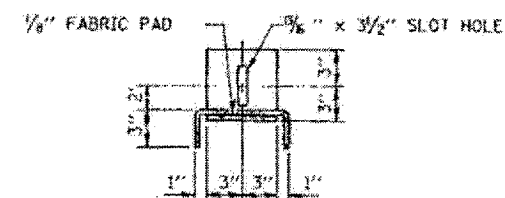


SECTION AT DRAIN

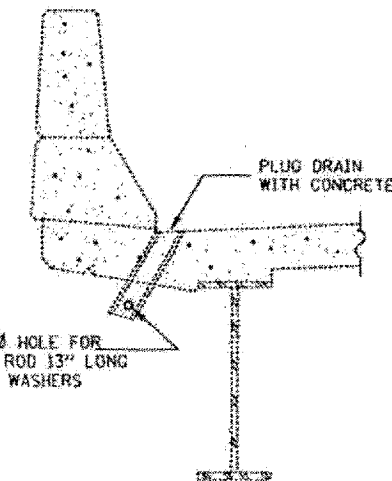
(68 LOCATIONS)



SECTION A-A



SECTION B-B



SECTION AT DRAIN
DRAIN ELIMINATION DETAIL

(28 LOCATIONS)

BRIDGES NO. 4 AND NO. 5
STRUCTURES 064-0023 064-0024
FOR INFORMATION ONLY