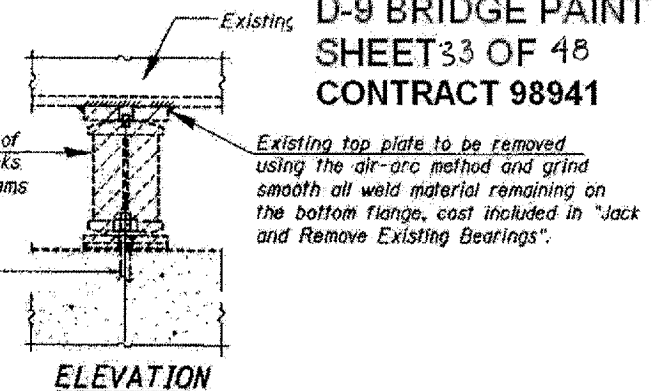
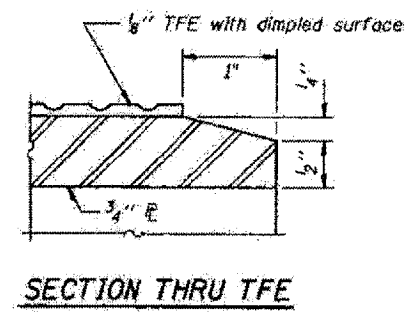
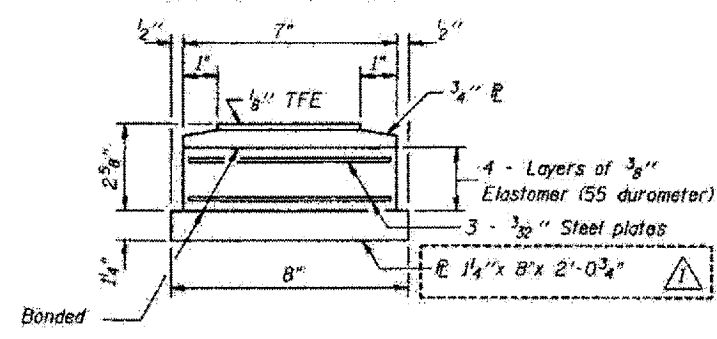
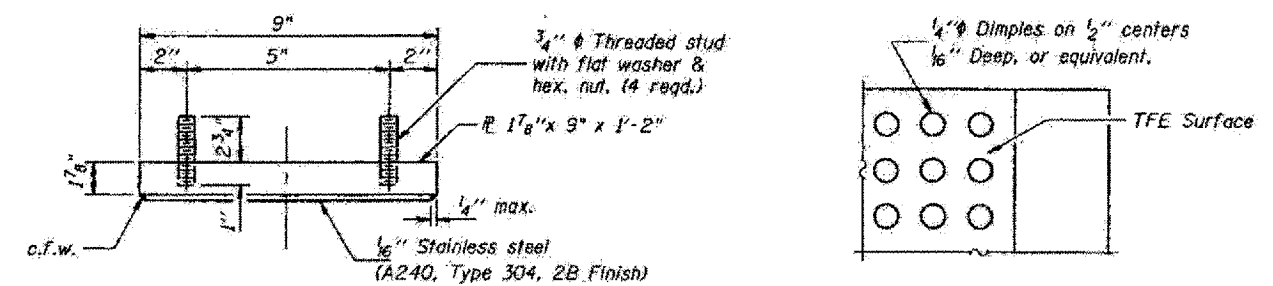


Hatched areas indicate removal of existing bearing and plates. Jacks shall be placed under exist. beams and cribbing shall be provided.

Burn existing anchor bolts flush with concrete surface. Grind existing anchor bolt smooth and seal with epoxy. Cost is included with "Jack and Remove Existing Bearings".

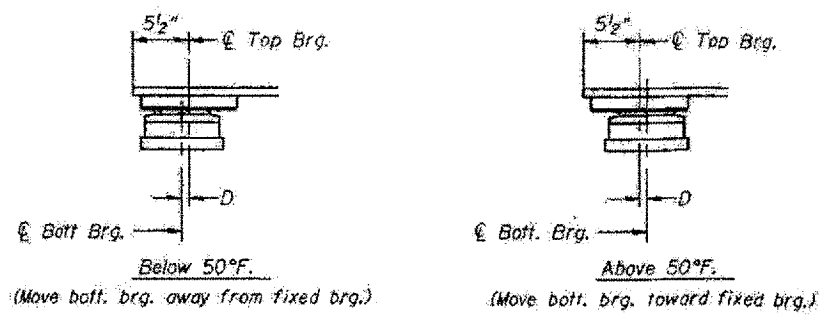


TYPE II ELASTOMERIC EXP. BRG.



NOTE: The 1/8" TFE sheet shall be bonded directly to the top steel plate with a two-component, medium viscosity epoxy resin, conforming to the requirements of the Federal Specification MMM-A-134, Type I the bond agent shall be applied on the full area of the contact surfaces.

Bonding of 1/8" TFE sheet during vulcanizing process will be permitted provided the process and method of adjusting assembly height is approved by the Engineer.



D = 1/8" per each 100' of expansion for every 15° temp. Change from the normal temp. of 50°F.

***INTERIOR BEAM REACTION TABLE**

	SERVICE LOADS
R \mathcal{R} (K)	13.8
R \mathcal{L} (K)	34.8
Imp (K)	10.4
R Total (K)	59.0

* Min. Jack capacity at each Beam shall be 30 Tons.

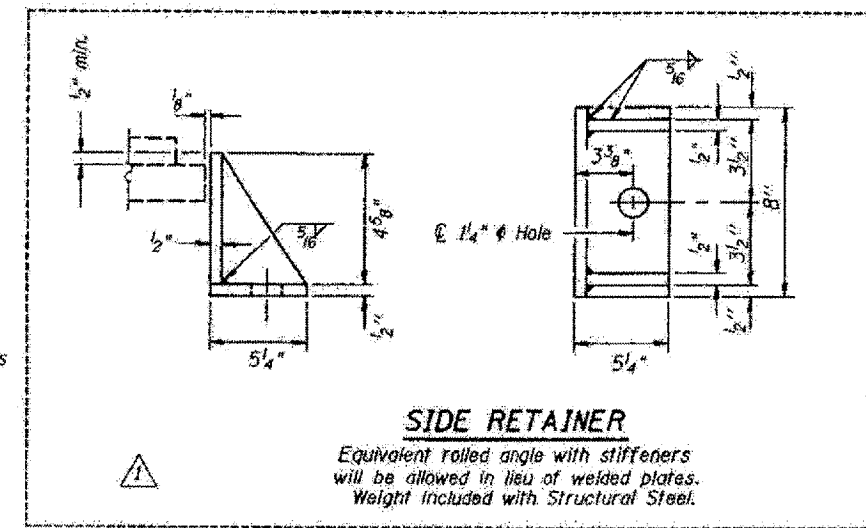
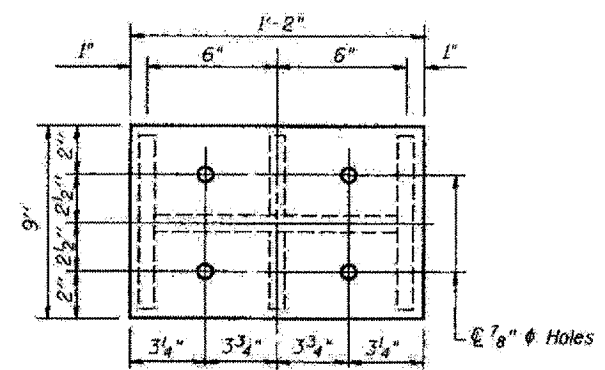
Notes:

Prior to ordering any material, the contractor shall verify in the field all bearing height dimensions.

For anchor bolt installation details see sheet # 8 of 12.

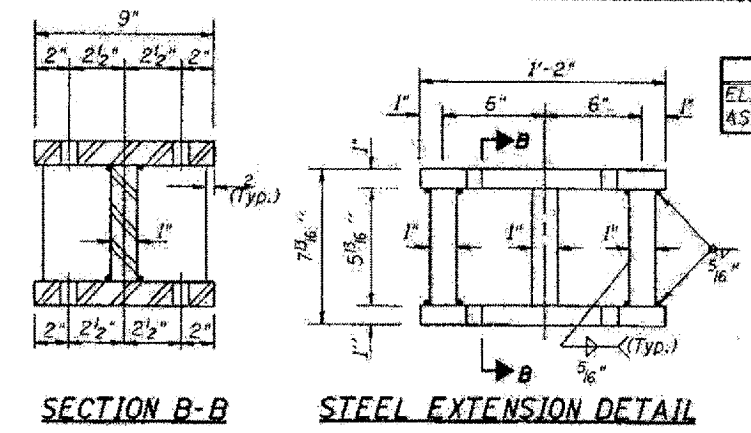
New steel extensions, side retainers, connection bolts, anchor bolts, and shim plates are included in "Furnishing and Erecting Structural Steel".

Diaphragm removal and replacement may be required to facilitate drilling holes. Cost shall be included in the cost of Furnishing and Erecting Structural Steel.



BILL OF MATERIAL

ITEM	UNIT	TOTAL
ELASTOMERIC BEARING ASSEMBLY TYPE II	EACH	12



DESIGNED	J.C.P.
CHECKED	
DRAWN	T. F.
CHECKED	

BRIDGES NO. 8 AND NO. 9
STRUCTURES 064-0027 064-0028
FOR INFORMATION ONLY

ELASTOMERIC BEARING TYPE II.

EAST ABUTMENT