

NOTE A
1 3/8" Holes - 1" deep in top R.
for pintles. Thread or press fit
pintles into bottom R.

NOTE B
1/2" Holes for 1" anchor bolts.
2 1/2" x 2 1/2" x 3/16" R. Washers
under nut.

NOTE C
1 3/8" Holes 1" deep in top R.
only for 1 1/4" pintles.

NOTES ON SETTING OF ANCHOR BOLTS AT EXP. BRGS.

- a) D* (Side of brg. away from fixed brg.)
D* = 1/8" per each 100' of expansion for
every 15° fall below the normal temp.
of 50°F.
D** (Side of brg. toward fixed brg.)
D** = 1/8" per each 100' of expansion for
every 15° rise above the normal temp.
of 50°F.

- b) After beams have been erected and dimensions D* or D**
determined, holes shall be drilled and anchor bolts shall
be grouted in place, except as noted.

BEARING ASSEMBLY DETAILS

TOP OF BEAM ELEVATIONS

	West Bound Bridge						East Bound Bridge					
	Bm #1	Bm #2	Bm #3	Bm #4	Bm #5	Bm #6	Bm #7	Bm #8	Bm #9	Bm #10	Bm #11	Bm #12
Q Brg. W. Abut.	426.61	426.77	426.90	426.99	426.87	426.73	426.68	426.82	426.94	426.84	426.70	426.54
Q Brg. Pier 1	426.58	426.74	426.87	426.96	426.84	426.70	426.68	426.82	426.94	426.84	426.70	426.54
Q Splice	426.57	426.73	426.86	426.95	426.83	426.69	426.68	426.82	426.94	426.84	426.70	426.54
Q Brg. Pier 2	426.59	426.75	426.88	426.97	426.85	426.71	426.73	426.87	426.99	426.89	426.75	426.59
Q Brg. E. Abut.	426.60	426.76	426.89	426.98	426.86	426.72	426.76	426.90	427.02	426.92	426.78	426.62

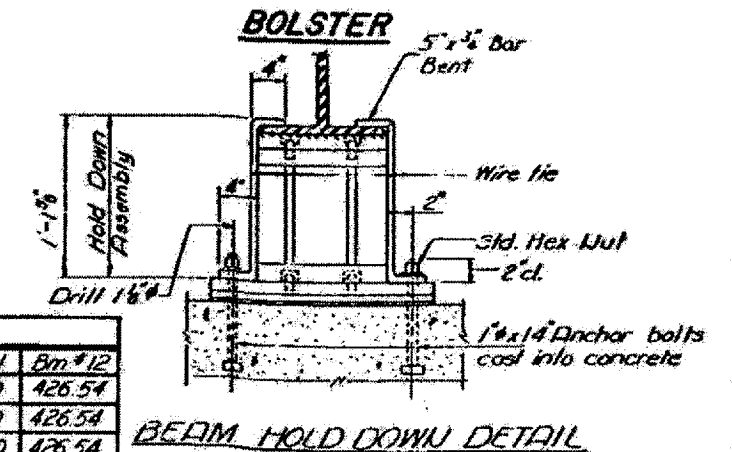


TABLE OF MOMENTS AND REACTIONS-INTERIOR BEAMS

	Moments (ft-kip)			Reactions (kips)	
	3 Span 1 or 3	Pier 1 or 2	5 Span 2	Abut	Pier
Initial Dead Load	+26.6	-244.5	+188.0	7.2	50.8
Comp. Dead Load	+14.4	-65.5	+81.9	3.0	16.8
Live Load	+176.8	-186.8	+400.5	33.8	46.8
Impact	+53.0	-50.4	+108.1	9.7	12.7
Total	+270.8	-547.2	+778.5	53.7	127.1

BEAM PROPERTIES

	Steel Section	Composite Section
	Pier	0.5 Span 2
I	5887 in ⁴	15,538 in ⁴
S _f	358 in ³	5,012 in ³
S _b	358 in ³	522 in ³

Note:
Beams shall be held down at the Abutment on the
opposite end of Bridge from which the deck pour is
commenced. After pouring is completed the Hold
Down Assembly shall be removed and Nuts placed
on Anchor Bolts.
Cost of Hold Down Assembly, incidental to Class X
Concrete.

DESIGNED James Hamilton
CHECKED A. K.
R.P.S.
DRAWN P.G. Barnett
CHECKED A.K.

EXAMINED [Signature]
PASSED [Signature]
[Signature]