

STATE OF ILLINOIS
DEPARTMENT OF TRANSPORTATION

VARIOUS ROUTES
VARIOUS COUNTIES
D-9 BRIDGE PAINTING FY 06-1
CONTRACT 98941
SHEET 42 OF 48

B.M.: R.R. Spike in P.R. 49' Rt. Sta. 290+91 Elev. +32.40
Existing structures built as F.A. Rte. 126, Sec. 8 BCD, Sta. 281+00 &
Sta. 287+00 in 1936. Superstructure 24' W with
6 1/2" Conc. slab, Pile Bent Substructure. The Existing
26'-0" Wide x 213'-0" Long bridges to be removed
by Contractor after new bridge is open to
traffic
No Salvage

All reinforcement & Fasteners shall be otherwise noted.
Calculated weight of structural steel = 233,120 lbs.
All Structural Steel shall be AASHTO M 222 unpainted except as noted.

Field welding of construction accessories will not be permitted to the bottom flange of beams or girders nor to the top flange for a distance equal to one-fourth the span length each way from the pier supports. Field welding in other areas will be permitted only when approved by the Engineer.

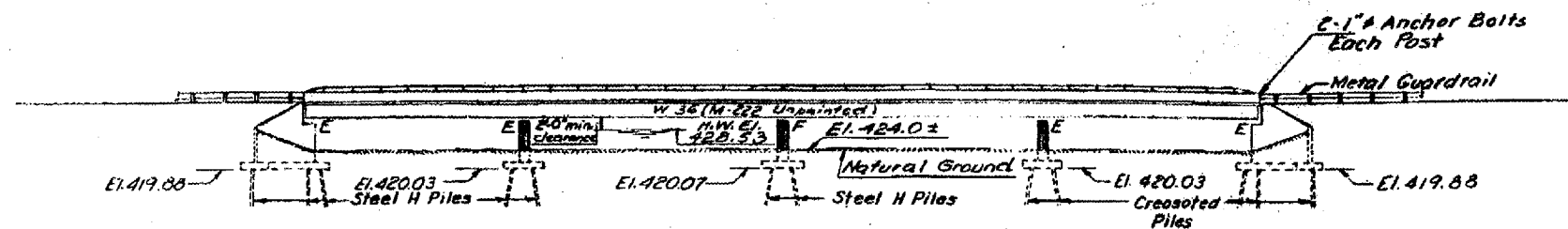
Anchor bolts shall be set before bolting diaphragms over supports. The main load carrying member components subject to the Supplemental Requirements for Notch Toughness are the wide flange beams.

The concrete rail section above the mandatory construction joint at the top of the slab shall be constructed of Class X Concrete, except the aggregates shall conform to the requirements of Handrail Concrete.

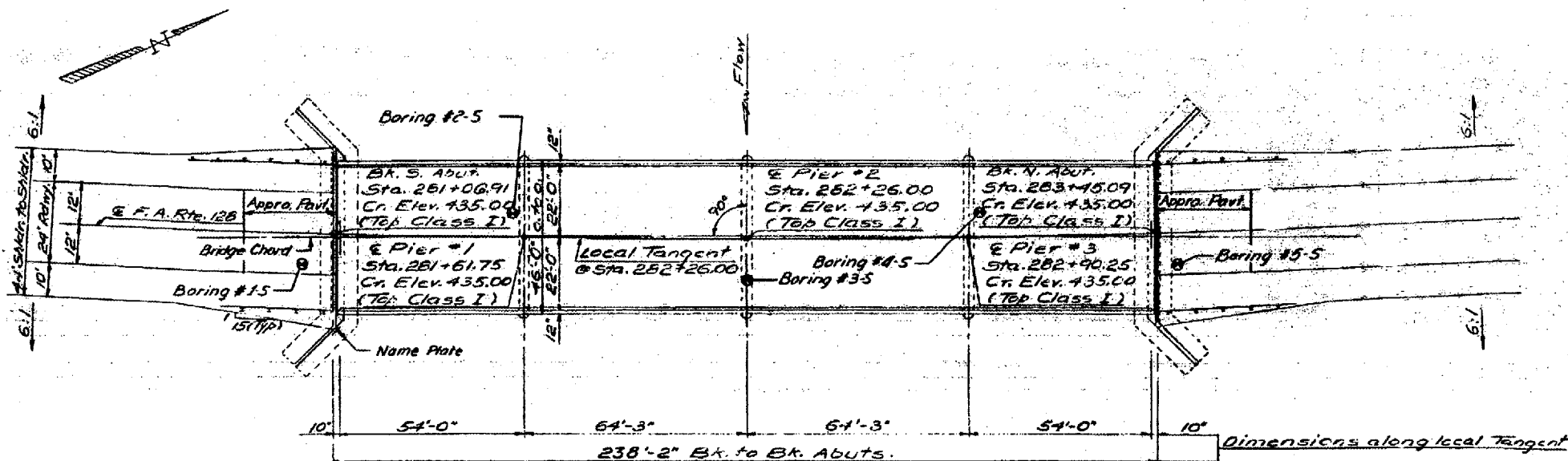
Protective coat shall not be applied to surfaces which Waterproofing Membrane System is applied.

Bearing seat surfaces shall be constructed or adjusted to the designated elevations within a tolerance of ± 1/8". Adjustment shall be made either by grinding the surface or by shimming the bearing. Two 1/8" adjusting shims, of the dimensions of the bottom bearing plate, shall be provided for each bearing in addition to all other plates or shims.

The Contractor shall drive one timber test pile in a permanent location at Pier #3 and one steel test pile (HP 12x53) in a permanent location at Pier #2 as directed by the Engineer before ordering the remainder of piles.



ELEVATION



PLAN

CURVE DATA

A = 10° - 32' - 13"
D = 0° - 35'
R = 7822.13'
L = 1806.33'
T = 905.72'
E = 41.67'
S.E. = 0.0211/ft
App. Sta. 278+05 to Sta. 280+05

STATION 282+26
BUILT 197 BY
STATE OF ILLINOIS
F.A. RTE. 126 SEC. 8-1B-1
F.A. PROJ. F-237 (33)
LOADING HS20

See Standard 2113
NAME PLATE

WATERWAY INFORMATION

Drainage Area 53.0 Sq. mi.
Required Opening 1064 Sq. Ft.*
Proposed Opening 1064 Sq. Ft.*

Design H.W. E1.428.53
4.00 = 5500 cfs
Critical Head = 0.71'

* Includes 6' x 6' Box Culvert

TOTAL BILL OF MATERIAL

ITEM	UNIT	SUPER	SUB	TOTAL
Structure Excavation	Cu. Yds.		604	604
Class A Concrete	Cu. Yds.	337.2	197.4	534.6
Reinforcement Bars	Lbs.	79,930	20,120	100,050
Aluminum Hoisting	Lin. Ft.		472	472
Bituminous Concrete Surface Course, C.I.	Yds.		93	93
Waterproofing Membrane System*	Sq. Yds.		1123	1123
Preformed Joint Sealer (1/2")	Lin. Ft.		92	92
Structural Steel	L.S.	LS		0.64
Name Plates	Each		1	1
Protective Coat	Sq. Yds.	175		175
Class A Concrete	Cu. Yds.		135.3	135.3
Crossed Piles (Over 38')	Lin. Ft.		2173	2173
Test Piles (Timber)	Each		1	1
Steel Piles (HP 12 x 53)	Lin. Ft.		3740	3740
Test Piles Steel (HP 12 x 53)	Each		1	1
Removal of Existing Structures	Each			2

* See Special Provisions

BRIDGE NO. 11
073-0026
FOR INFORMATION ONLY

GENERAL PLAN & ELEVATION
PROJECT: F-237(33)
F.A. RTE 126 OVER SWANWICK CREEK
OVERFLOW
F.A. RTE 128 SECTION 8-1B-1
PERRY COUNTY
STA. 282+26.00

DESIGNED: *Fordy Chu*
CHECKED: *Sal Fatoni*
DRAWN: *P. Bonetti*
CHECKED: *SF TCC*
DATE: *October 15 1973*
APPROVED: *H.C. [Signature]*
APPROVED: *Harry [Signature]*