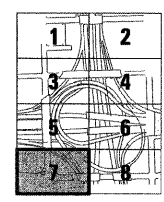
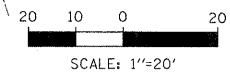
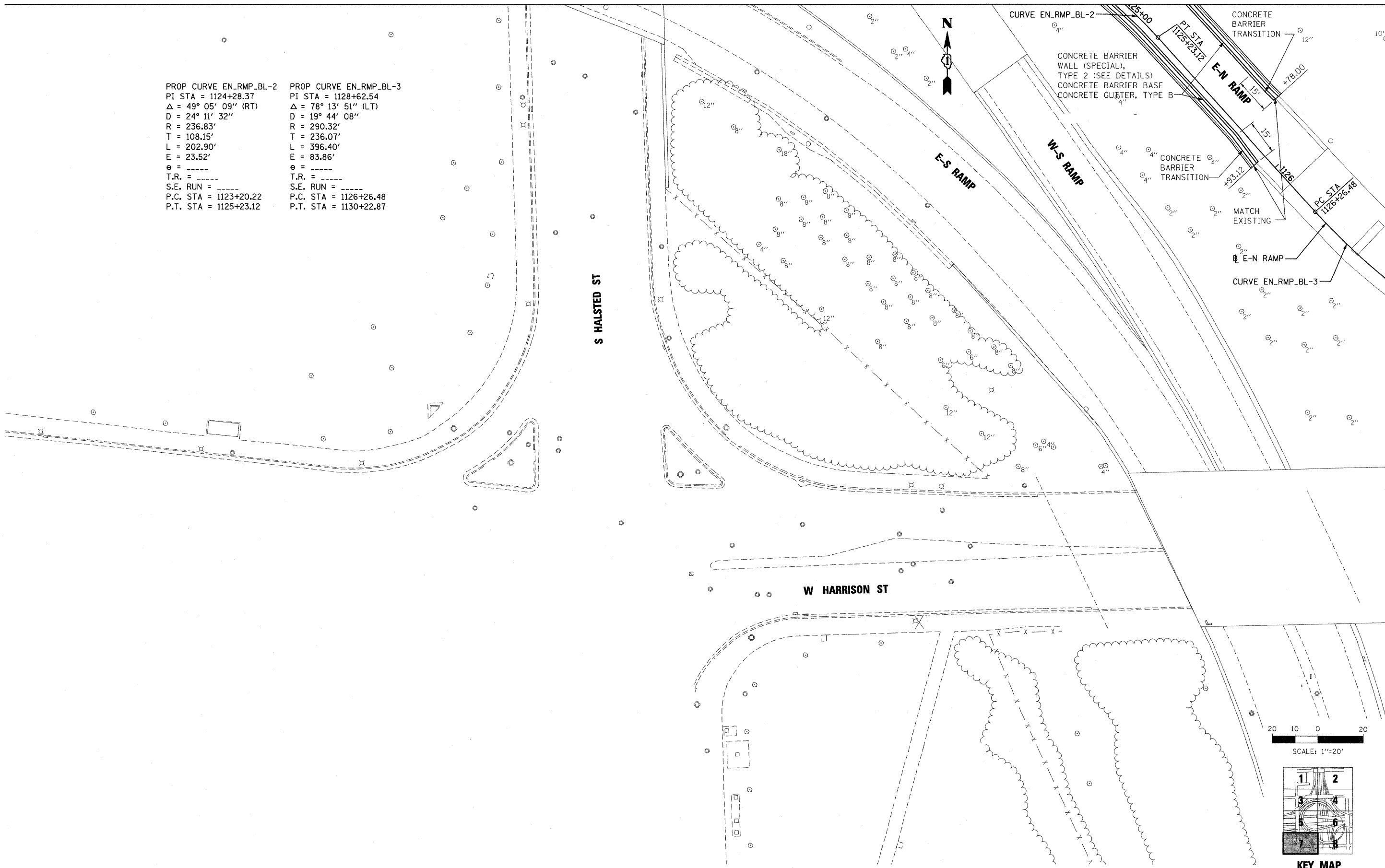


PROP CURVE EN_RMP_BL-2 PI STA = 1124+28.37 Δ = 49° 05' 09" (RT) D = 24° 11' 32" R = 236.83' T = 108.15' L = 202.90' E = 23.52' e = ---- T.R. = ---- S.E. RUN = ---- P.C. STA = 1123+20.22 P.T. STA = 1125+23.12	PROP CURVE EN_RMP_BL-3 PI STA = 1128+62.54 Δ = 78° 13' 51" (LT) D = 19° 44' 08" R = 290.32' T = 236.07' L = 396.40' E = 83.86' e = ---- T.R. = ---- S.E. RUN = ---- P.C. STA = 1126+26.48 P.T. STA = 1130+22.87
---	---



MATCHLINE SHEET 8

FILE NAME = 22_D60P67-ah:plan07.dgn	USER NAME = USER3690	DESIGNED - DLD	REVISED -	STATE OF ILLINOIS DEPARTMENT OF TRANSPORTATION	PROPOSED ROADWAY PLAN			F.A.I. RTE. 90794 7290	SECTION 2011-055-I	COUNTY COOK	TOTAL SHEETS 107	SHEET NO. 23
PLOT SCALE = 1:20	CHECKED - AAC	REVISED -	REVISED -		SCALE: 1"=20'	SHEET NO. 7 OF 8 SHEETS	STA.	TO STA.	CONTRACT NO. 60P67			
PLOT DATE = 9/8/2011	DATE - 08/04/11	REVISED -	REVISED -		ILLINOIS FED. AID PROJECT							