

**BENCHMARK:**

CP #112 Chisled "X" on sidewalk at the southwest corner of Van Buren Street and Des Plaines Street, approximately 13' South of the Pump Station #5 entrance on Des Plaines Street. Elev. 591.624

STATE OF ILLINOIS  
DEPARTMENT OF TRANSPORTATION

ROUTE NO.	SECTION	COUNTY	TOTAL SHEETS	SHEET NO.	SHEET NO.
290	2011-0551	COOK	107	73	3 SHEETS

Contract #60P67

**DESIGN SPECIFICATIONS**

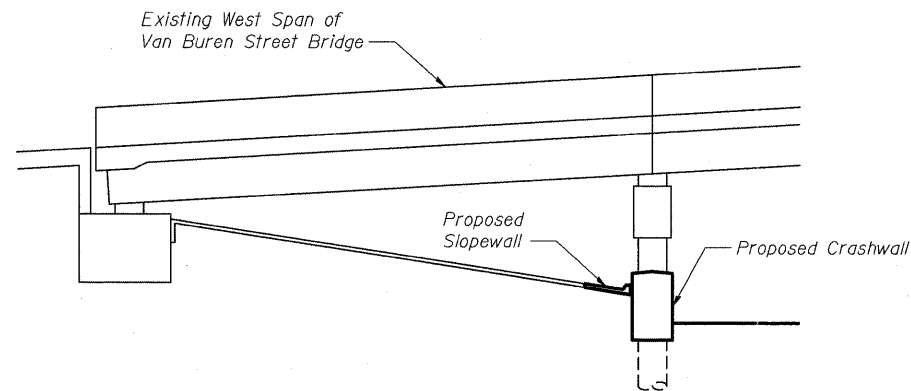
AASHTO 2002 Standard Specification for Highway Bridges.

**DESIGN STRESSES**

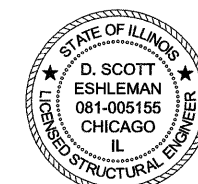
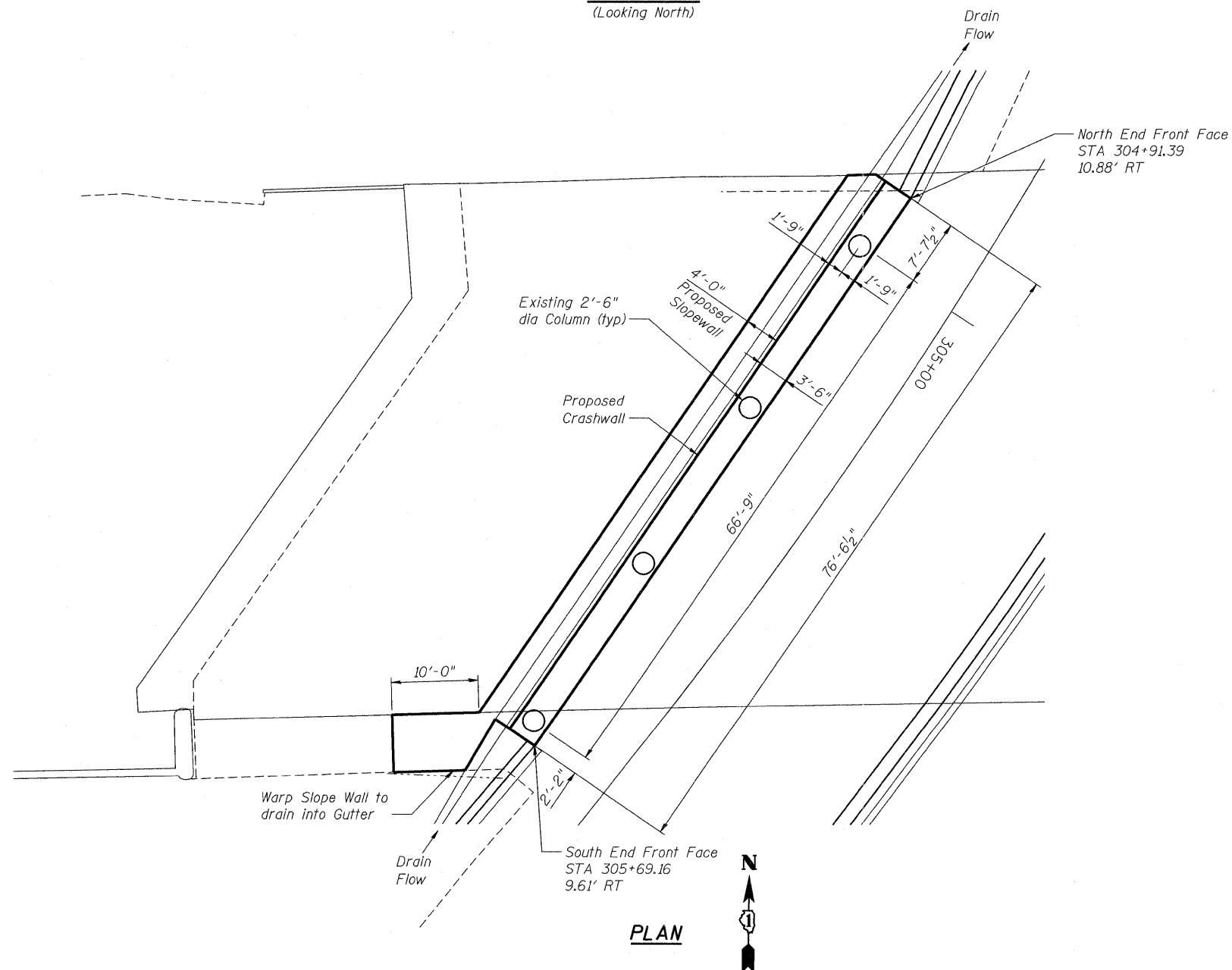
$f'_c = 3,500 \text{ PSI}$

$f_y = 60,000 \text{ PSI}$

Maximum Allowable Soil Bearing Pressure = 2,000 PSF



**ELEVATION**  
(Looking North)



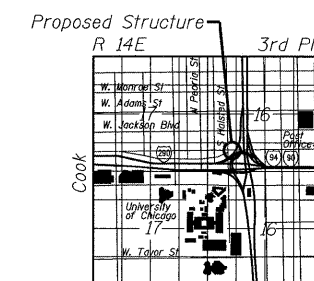
EXPIRATION DATE: 11-30-2012

DATE: \_\_\_\_\_



**Stanley Consultants INC.**

8501 West Higgins Road, Suite 730, Chicago, Illinois 60631-2801  
www.stanleyconsultants.com  
Illinois Firm Registration No.: 1184-001533



**LOCATION SKETCH**

DESIGNED	DSE
CHECKED	NDR
DRAWN	ZLM
CHECKED	DSE

**GENERAL PLAN & ELEVATION**  
**I-90/I-94/I-290**  
**EB I-90/94 TO WB I-290**  
**F.A.I. 94 /290-SECT. (2011-0551)**  
**COOK COUNTY**  
**STATION 305+30**