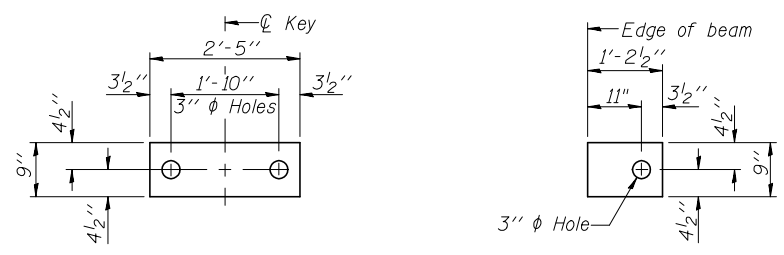




**FABRIC BEARING PAD** (Interior Abutment) **FABRIC BEARING PAD** (Exterior Abutment)

**EXPANSION**

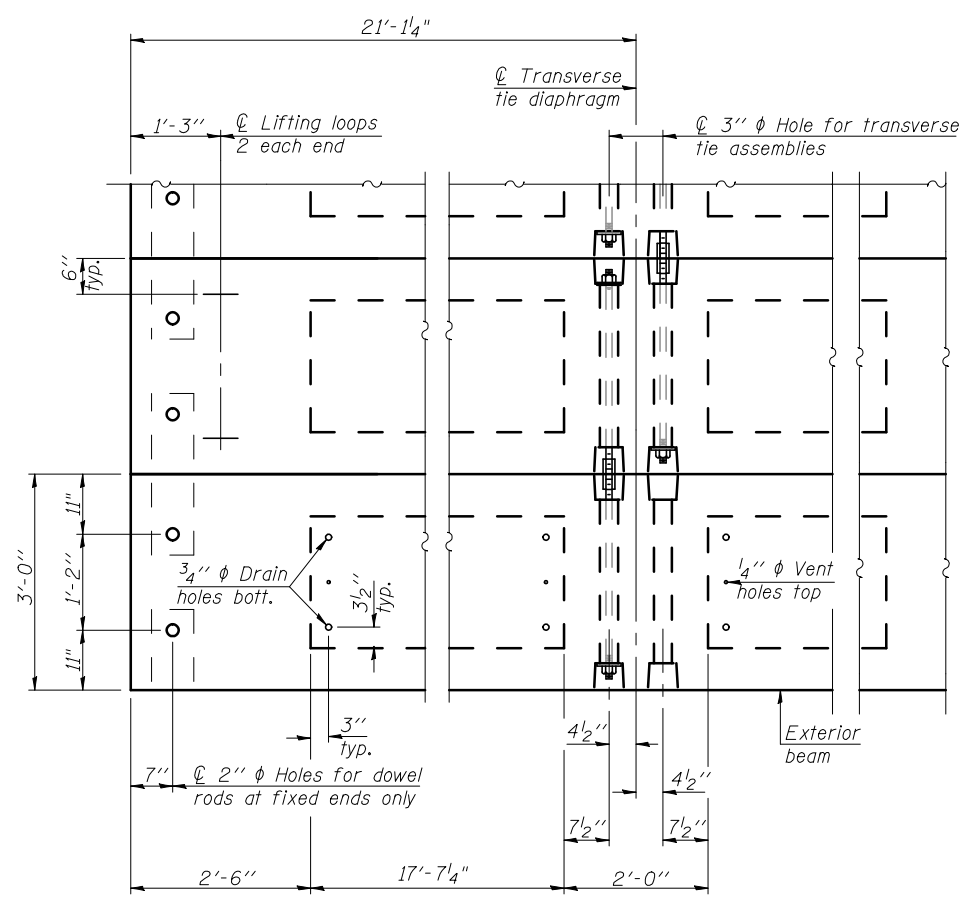
Notes:  
All bearing pads shall be 1" thick.  
Expansion bearing pad shall be bonded to the substructure.



**FABRIC BEARING PAD** (Interior) **FABRIC BEARING PAD** (Exterior)

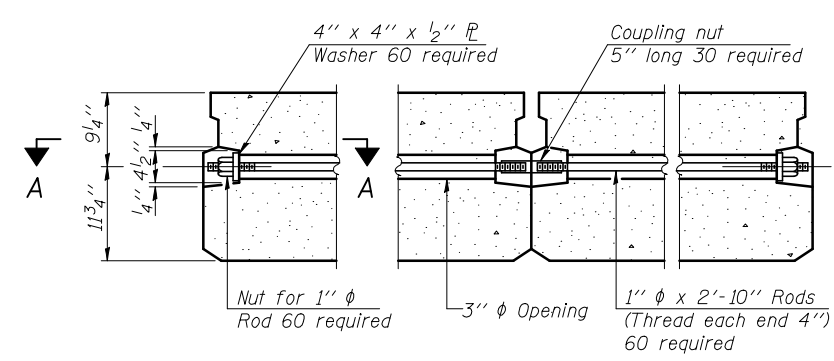
**FIXED**

Notes:  
All bearing pads shall be 1" thick.

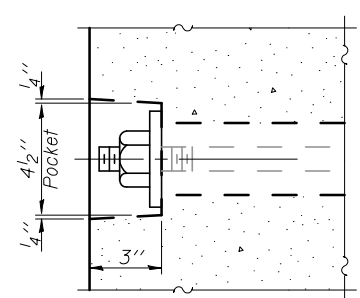


**PLAN VIEW**

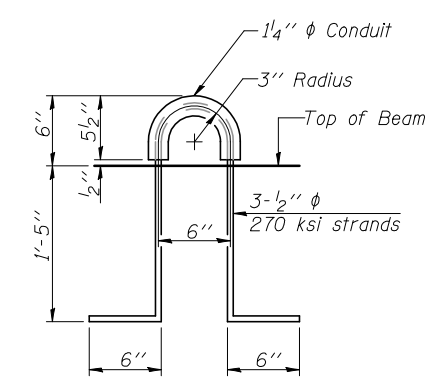
Note: Connect beams in pairs with the transverse tie configuration shown.



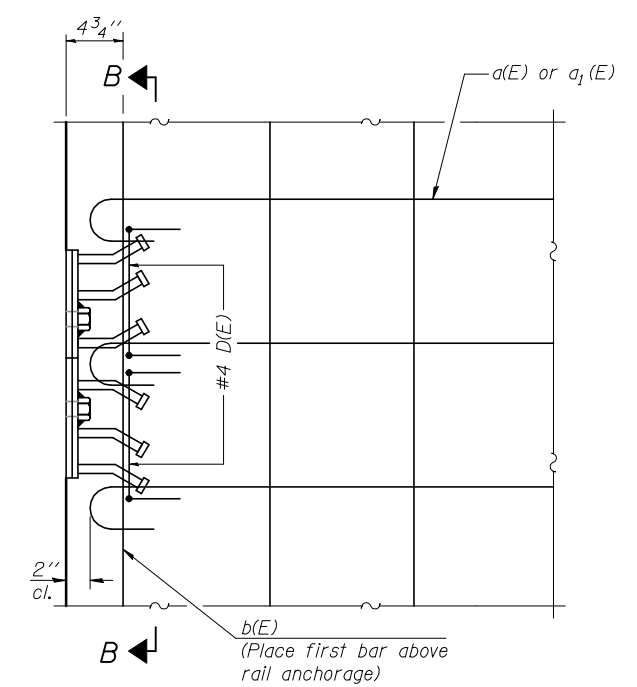
**TYPICAL TRANSVERSE TIE ASSEMBLY**



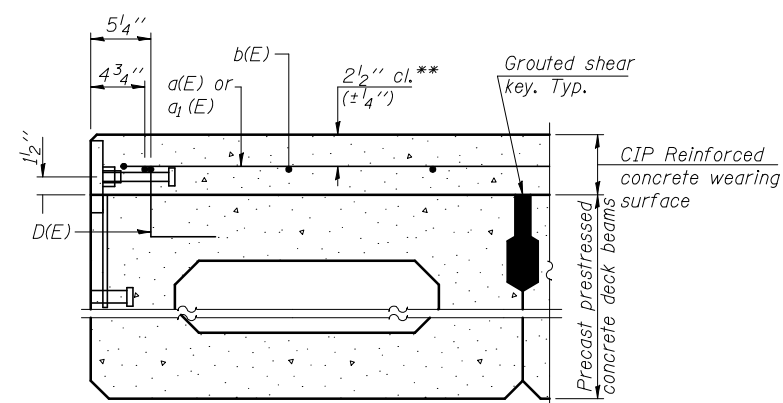
**SECTION A-A**



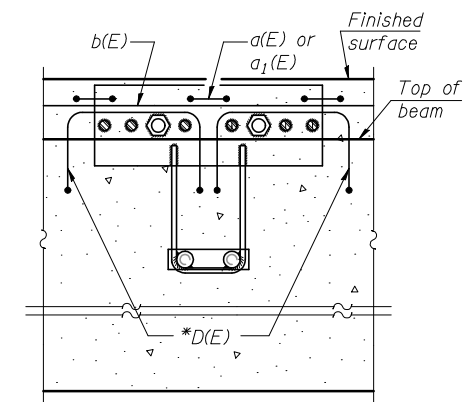
**LIFTING LOOP DETAIL**



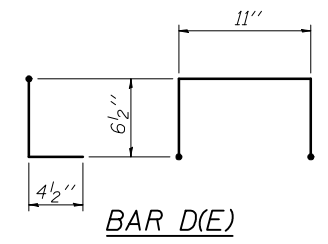
**PLAN**



**SECTION THRU FASCIA BEAM**



**SECTION B-B**



**BAR D(E)**

\* Place 2-#4 D(E) bars in beam at each post location as shown. D(E) bar included in cost of beam.

\*\* Prior to Grinding

Note:  
Formwork necessary for the wearing surface may be secured utilizing the bottom rail anchorage inserts and/or additional inserts cast into the beam. Drilling into the beam will not be permitted.

**BILL OF MATERIAL**

Precast Prestressed Conc. Deck Bms. (21" depth)	Sq. Ft.	4179
---	---------	------

BLANK, WESSELINK, COOK & ASSOCIATES ENGINEERS - CONSULTANTS DECATUR, ILLINOIS DESIGN FIRM NO. 18400894

FILE NAME =	USER NAME =	DESIGNED <i>PBB</i>	REVISED -
		CHECKED <i>RJC/SAL</i>	REVISED -
	PLOT SCALE =	DRAWN <i>MLO</i>	REVISED -
	PLOT DATE =	CHECKED <i>PBB</i>	REVISED -

**STATE OF ILLINOIS**  
**DEPARTMENT OF TRANSPORTATION**

**21" x 36" PPC DECK BEAM DETAILS**  
**STRUCTURE NO. 023-0025**

SHEET NO. 8 OF 15 SHEETS

F.A.P. RTE.	SECTION	COUNTY	TOTAL SHEETS	SHEET NO.
323	150BR-1	EDGAR	48	25
CONTRACT NO. 70609				
ILLINOIS FED. AID PROJECT				