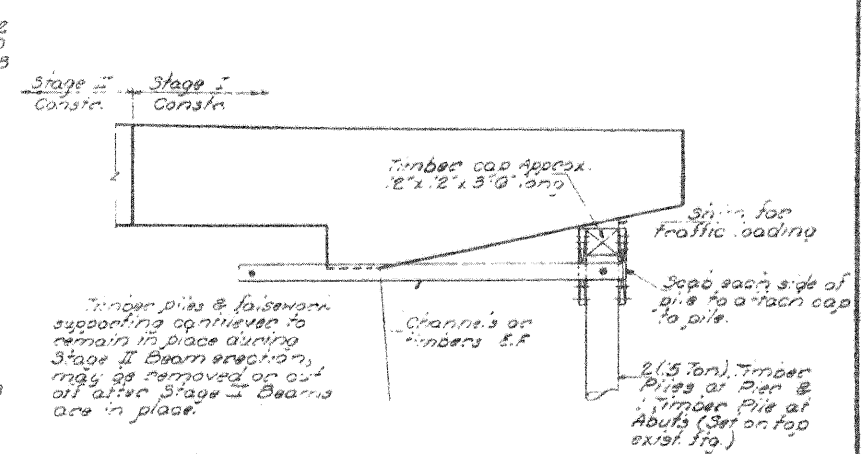
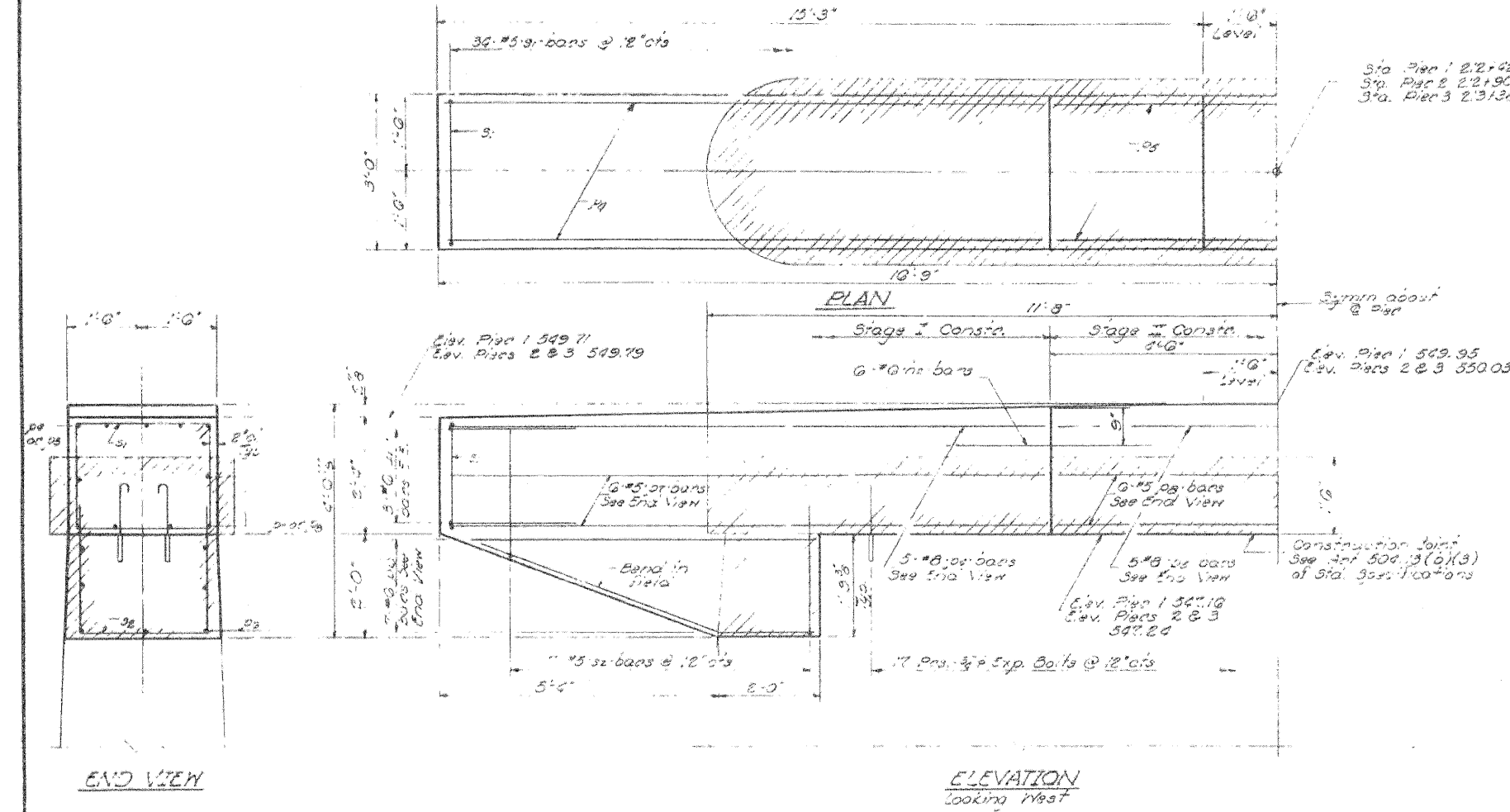


STATE OF ILLINOIS  
DEPARTMENT OF TRANSPORTATION  
DIVISION OF HIGHWAYS

PROJECT NO.	SECTION	COUNTY	TOTAL SHEETS	SHEET NO.
145 550	14BR	SANGAMON	12	12
DESIGNED BY	CHECKED BY	DRAWN BY	DATE	

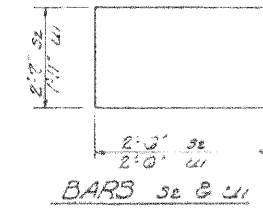
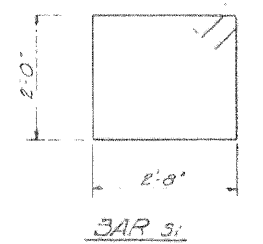


**TEMPORARY SUPPORT OF CAP  
DURING STAGE II CONSTRUCTION**  
(Cost incidental to contract)

**THREE PIERS  
BILL OF MATERIAL**

Bar	No	Size	Length	Shape
he	13	#9	4'-0"	—
pe	15	#8	12'-0"	—
ps	15	#8	21'-0"	—
pp	42	#6	7'-0"	—
pr	18	#5	12'-0"	—
ps	18	#5	8'-0"	—
sr	102	#5	10'-5"	□
se	42	#5	7'-0"	E
ur	18	#9	9'-11"	E
Concrete Removal			Cu. Yds	18
Expansion Bars 3/8"			Each	102
Class X Concrete			Cu. Yds	35.2
Reinforcement Bars			Lbs	8700

For detail of he bar see sht. #9.



DESIGNED	T.J.Z.
CHECKED	SDS
DRAWN	J. SCHNELLER
CHECKED	

Aug 17 1972  
 EXAMINED  
 PASSED *Richard H. Hollerman*  
 APPROVED *Richard H. Hollerman*

**NOTES:**  
 Hatched area indicates Concrete Removal.  
 Reinforcement extending into removed area shall be cut and incorporated into the new construction.  
 Expansion bolts shall be anchored in sound concrete.  
 All edges shall have standard chamfer except as noted.