

INDEX OF SHEETS

11-18-2022 LETTING ITEM 024

- 1 COVER SHEET
- 2 GENERAL NOTES
- 3-7 SUMMARY OF QUANTITIES
- 8 TYPICAL SECTIONS
- 9 CURVE DATA
- 10 SUPER-ELEVATION INFORMATION
- 11 LINE DIAGRAM
- 12 PERMANENT SURVEY TABLE
- 13-15 SCHEDULES
- 16-29 DETAILS

LIST OF ILLINOIS DOT HIGHWAY STANDARDS

- 000001-08 STANDARD SYMBOLS, ABBREVIATIONS AND PATTERNS
- 001006 DECIMAL OF AN INCH AND OF A FOOT
- 406201-01 MAILBOX TURNOUT
- 442101-09 PATCHING, CLASS B
- 542011-02 CONCRETE END SECTIONS FOR ELLIPTICAL PIPE CULVERTS
- 542311-07 15" (375 MM) "HRU 72" (1800 MM) EQUIVALENT DIAMETER TRAVERSABLE PIPE GRATE FOR CONCRETE END SECTION
- 542406-04 METAL FLARED END SECTION FOR PIPE ARCHES
- 630001-12 STEEL PLATE BEAM GUARDRAIL
- 630106-02 LONG-SPAN GUARDRAIL OVER CULVERT
- 631006-08 TRAFFIC BARRIER TERMINAL, TYPE 1B
- 635001-02 SHOULDER RUMBLE STRIPS, 8 INCH
- 642006-01 OFF-ROAD OPERATIONS 2L, 2W, 15' (4.5 m) TO 24" (600 mm) FROM PAVEMENT EDGE
- 701201-05 LANE CLOSURE, 2L, 2W, DAY ONLY, FOR SPEEDS ≥ 45 MPH
- 701301-04 LANE CLOSURE, 2L, 2W, SHORT TIME OPERATIONS
- 701306-04 LANE CLOSURE, 2L, 2W, SLOW MOVING OPERATIONS DAY ONLY, FOR SPEEDS ≥ 45 MPH
- 701311-03 LANE CLOSURE, 2L, 2W, MOVING OPERATIONS - DAY ONLY
- 701901-08 TRAFFIC CONTROL DEVICES
- 780001-05 TYPICAL PAVEMENT MARKINGS

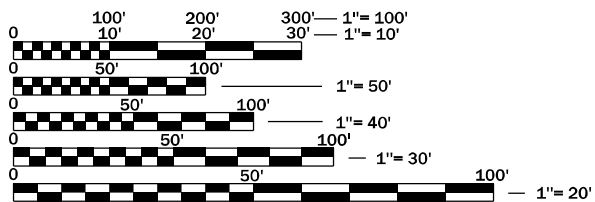
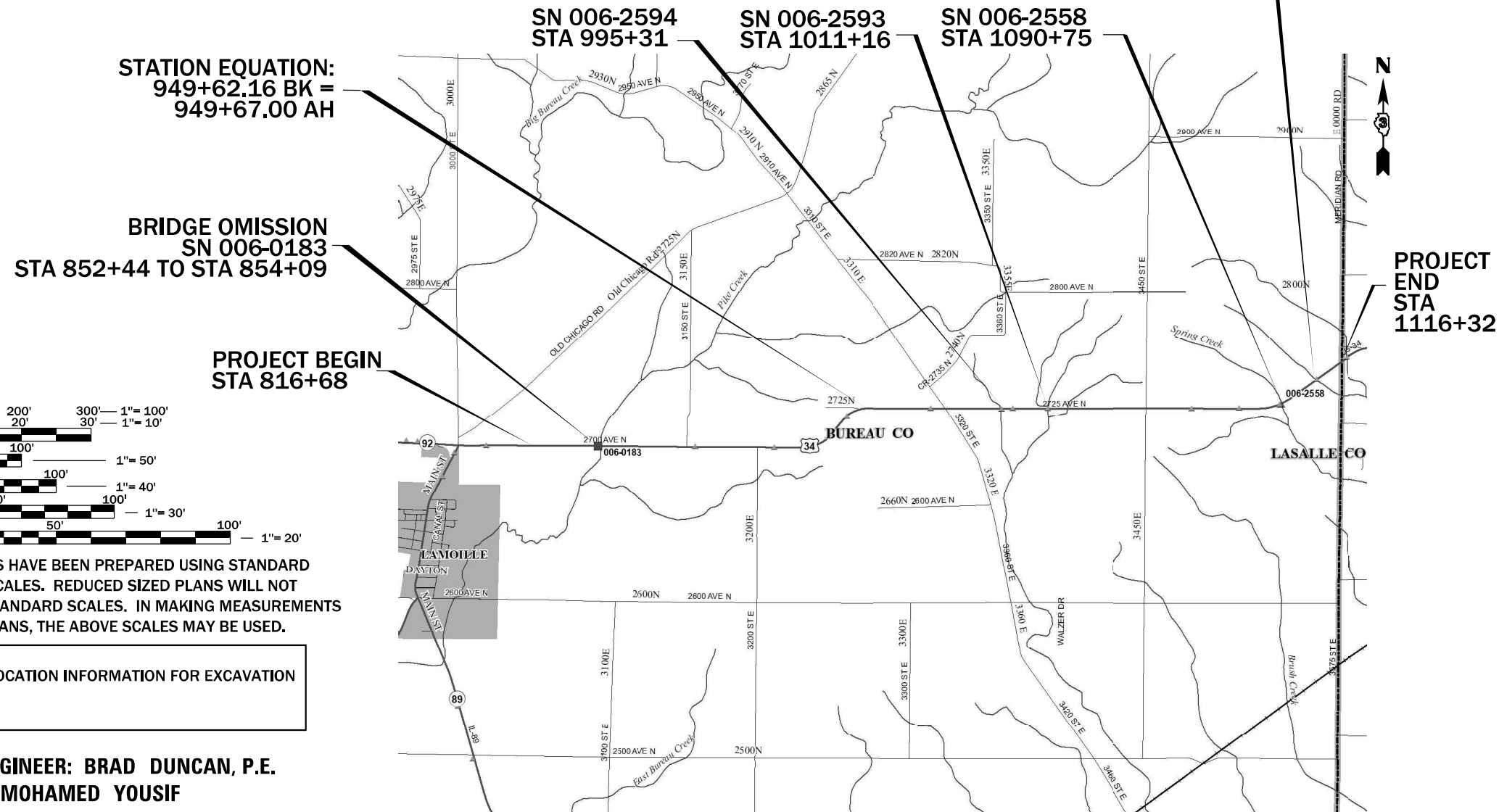
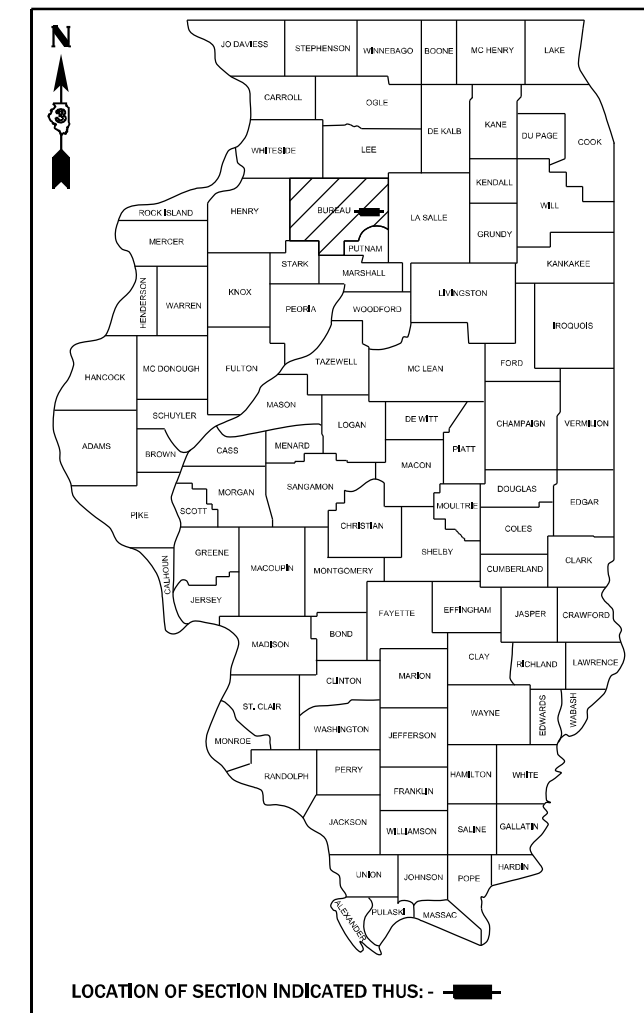
STATE OF ILLINOIS DEPARTMENT OF TRANSPORTATION PROPOSED HIGHWAY PLANS

FAP ROUTE 587 (US 34) SECTION (22)RS-7 PROJECT STP-J0FA(976) SMART OVERLAY BUREAU COUNTY

C-93-050-22

F.A.P. RTE.	SECTION	COUNTY	TOTAL SHEETS	SHEET NO.
587	(22)RS-7	BUREAU	29	1
		ILLINOIS	CONTRACT NO. 66M31	

D-93-028-22



FULL SIZE PLANS HAVE BEEN PREPARED USING STANDARD ENGINEERING SCALES. REDUCED SIZED PLANS WILL NOT CONFORM TO STANDARD SCALES. IN MAKING MEASUREMENTS ON REDUCED PLANS, THE ABOVE SCALES MAY BE USED.

J.U.L.I.E.
JOINT UTILITY LOCATION INFORMATION FOR EXCAVATION
1-800-892-0123
OR 811

PROJECT ENGINEER: BRAD DUNCAN, P.E.
UNIT CHIEF: MOHAMED YOUSIF
DISTRICT 3 NO. (815) 434-6131
CONTRACT NO. 66M31

GROSS LENGTH = 29955.46 FT. = 5.673 MILE
NET LENGTH = 29790.46 FT. = 5.642 MILE

MINOR ARTERIAL
2021 ADT= 1750
PV=98.00% SU=0.6% MU=1.40%

STATE OF ILLINOIS
DEPARTMENT OF TRANSPORTATION

SUBMITTED August 25, 2022

David Ahmed
REGIONAL ENGINEER

October 14, 2022
Scott A. Etk
ENGINEER OF DESIGN AND ENVIRONMENT

October 14, 2022
Steph M. Smith
DIRECTOR OF HIGHWAYS PROJECT IMPLEMENTATION

**PRINTED BY THE AUTHORITY
OF THE STATE OF ILLINOIS**

GENERAL NOTES

THE HMA SURFACE OF ALL MAILBOX TURNOUTS, PRIVATE ENTRANCES, COMMERCIAL ENTRANCES, AND SIDE ROADS SHALL BE MADE NEATLY, IN A WORKMANLIKE MANNER, AND SHALL ACCURATELY CONFORM TO THE SHAPES AND DIMENSIONS SHOWN ON THE PLAN DETAILS. IF REQUIRED BY THE ENGINEER, THE CONTRACTOR SHALL SAW CUT THE HMA SURFACE TO CONFORM TO THE SHAPES AND DIMENSIONS SHOWN ON THE PLAN DETAILS. THIS WORK WILL BE INCLUDED IN THE COST OF THE HMA SURFACE.

EXCEPT AS NOTED ON THE PLANS, PAVEMENT GRADES SHOWN ARE AT THE TOP OF PAVEMENT SURFACES.

THE ENGINEER WILL BE THE SOLE JUDGE CONCERNING CURING TIME FOR THE VARIOUS HMA LIFTS.

ON EXISTING PAVEMENT WHICH MAY BE SUPERELEVATED, THE NEW HMA PAVEMENT SHALL BE BUILT WITH THE SAME SUPERELEVATION UNLESS NEW SUPERELEVATION RATES ARE GIVEN ON THE PLANS.

ALL ELEVATIONS REFERRING TO U.S.G.S. MEAN SEA LEVEL DATUM.

THE FOLLOWING RATES OF APPLICATION HAVE BEEN USED IN CALCULATING PLAN QUANTITIES:

GRANULAR MATERIALS	2.05	TONS / CU YD
HMA RESURFACING	112	LBS / SQ YD / IN
SHORT TERM PAVEMENT MARKING	10	FT /100 FT OF APPLICATION
MIX FOR CRACKS, JTS & FLGWYS	0.0003	TONS / SQ YD
BINDER (HAND METHOD)	0.0005	TONS / SQ YD

ALL DAMAGE TO DEPARTMENT OWNED UNDERGROUND FACILITIES, CAUSED BY THE CONTRACTOR SHALL BE REPAIRED TO THE SATISFACTION OF THE ENGINEER AND AT NO EXPENSE TO THE DEPARTMENT. THIS SHALL INCLUDE ALL TEMPORARY REPAIRS REQUIRED TO KEEP THE FACILITY OPERATIONAL WHILE MATERIAL IS BEING OBTAINED TO MAKE PERMANENT REPAIRS. SPLICING OF ELECTRIC CABLE WILL NOT BE ALLOWED. ELECTRIC CABLE SHALL BE REPLACED FROM POLE TO POLE OR CONTROLLER.

MEMBERS OF JULIE KNOWN TO BE WITHIN THE LIMITS OF THE IMPROVEMENT ARE: ALLIANCE PIPELINES, AMEREN ILLINOIS, COMED, ENTERPRISE PRODUCTS, FRONTIER COMMUNICATIONS, METRO COMMUNICATION, NICOR GAS, ONEOK NORTH SYSTEM, PREMBINA COCHIN, WEST SHORE PIPELINE.

COMMITMENTS

HMA MIXTURE REQUIREMENT TABLE		
LOCATIONS:	ENTIRE PROJECT	ENTIRE PROJECT
MIXTURE USE(S):	HMA SURFACE	HMA INCIDENTAL
BINDER GRADE (PG):	PG 64-22	PG 64-22
DESIGN AIR VOIDS:	4.0% @ N50	4.0% @ N50
MIXTURE COMPOSITION: (MIXTURE GRADATION)	IL 9.5	IL 9.5
FRICITION AGGREGATE:	MIXTURE C	MIXTURE C
MIXTURE WEIGHT:	112.0 LB/SY/IN	112.0 LB/SY/IN
QUALITY MANAGEMENT PROGRAM:	QCP	QCQA
SUBLOT SIZE:	1000 TONS	N/A
DENSITY TEST METHOD:	CORES	SATISFACTION OF ENGINEER
MATERIAL TRANSFER DEVICE (REQUIRED)	YES	NO

STATE OF ILLINOIS
DEPARTMENT OF TRANSPORTATION
DISTRICT THREE
AS BUILT INFORMATION

STATE OF ILLINOIS
DEPARTMENT OF TRANSPORTATION
DISTRICT THREE

SUPERVISING CONSTRUCTION FIELD ENGINEER

PREPARED BY: _____
DISTRICT STUDIES & PLANS ENGINEER

RESIDENT ENGINEER / TECHNICIAN

DATE: _____

START & END DATES
OF CONSTRUCTION:

INSPECTORS:

EXAMINED BY: _____
DISTRICT CONSTRUCTION ENGINEER

DISTRICT MATERIALS ENGINEER

DISTRICT OPERATIONS ENGINEER

MODEL: Default
FILE NAME: p:\bulletect-pw-bentley.com\PIV\DOT\Documents\DOT Office\District 3\Project\0366M31\CAAD\0366M31-1-1ht-cover.dgn

USER NAME = Cassandra.Nolasco	DESIGNED -	REVISED -
	DRAWN -	REVISED -
PLOT SCALE = 100,0000' / in.	CHECKED -	REVISED -
PLOT DATE = 8/23/2022	DATE -	REVISED -

**STATE OF ILLINOIS
DEPARTMENT OF TRANSPORTATION**

GENERAL NOTES

SCALE: SHEET OF SHEETS STA. TO STA.

F.A.P. RTE.	SECTION	COUNTY	TOTAL SHEETS	SHEET NO.
587	(22)RS-7	BUREAU	29	2
CONTRACT NO. 66M31				
ILLINOIS		FED. AID PROJECT		

CODE NO.	ITEM	UNIT	TOTAL QUANTITY	CONSTR. CODE	
				80% FED	20% STATE
				STP	
				ROADWAY	
				0005	
				RURAL	
20200100	EARTH EXCAVATION	CU YD	610		610
20400800	FURNISHED EXCAVATION	CU YD	20		20
20800150	TRENCH BACKFILL	CU YD	18		18
21400100	GRADING AND SHAPING DITCHES	FOOT	2275		2275
25000210	SEEDING, CLASS 2A	ACRE	1		1
25000400	NITROGEN FERTILIZER NUTRIENT	POUND	91		91
25000500	PHOSPHORUS FERTILIZER NUTRIENT	POUND	91		91
25000600	POTASSIUM FERTILIZER NUTRIENT	POUND	91		91
25100630	EROSION CONTROL BLANKET	SQ YD	3542		3542
28100107	STONE RIPRAP, CLASS A4	SQ YD	175		175
28200200	FILTER FABRIC	SQ YD	175		175
40600290	BITUMINOUS MATERIALS (TACK COAT)	POUND	63008		63008
40600370	LONGITUDINAL JOINT SEALANT	FOOT	44410		44410
40600400	MIXTURE FOR CRACKS, JOINTS, AND FLANGEWAYS	TON	27.5		27.5

MODEL: Default
 FILE NAME: p:\ultra-caw-bee\caw.com\PIV\DOT\Documents\DOT Office\Dir\dir: 3\Project\10366643\CAD\DATA\10366643-1-1-1-500.dgn

USER NAME = Cassandra.Nolasco	DESIGNED -	REVISED -
	DRAWN -	REVISED -
PLOT SCALE = 100,0000 ' / in.	CHECKED -	REVISED -
PLOT DATE = 8/26/2022	DATE -	REVISED -

**STATE OF ILLINOIS
DEPARTMENT OF TRANSPORTATION**

SUMMARY OF QUANTITIES

SCALE: SHEET OF SHEETS STA. TO STA.

F.A.P. RTE.	SECTION	COUNTY	TOTAL SHEETS	SHEET NO.
587	(22)RS-7	BUREAU	29	3
			CONTRACT NO. 66M31	
ILLINOIS		FED. AID PROJECT		

CODE NO.	ITEM	UNIT	TOTAL QUANTITY	CONSTR. CODE
				80% FED 20% STATE
				STP
				ROADWAY
				0005
				RURAL
40604050	HOT-MIX ASPHALT SURFACE COURSE, IL-9.5, MIX "C", N50	TON	7711	7711
40800050	INCIDENTAL HOT-MIX ASPHALT SURFACING	TON	193	193
44000155	HOT-MIX ASPHALT SURFACE REMOVAL, 1 1/2"	SQ YD	94112	94112
44200998	CLASS B PATCHES, TYPE III, 12 INCH	SQ YD	42	42
44201299	DOWEL BARS 1 1/2"	EACH	24	24
44213200	SAW CUTS	FOOT	138	138
48102100	AGGREGATE WEDGE SHOULDER, TYPE B	TON	1893	1893
50105220	PIPE CULVERT REMOVAL	FOOT	104	104
542A5479	PIPE CULVERTS, CLASS A, TYPE 1 EQUIVALENT ROUND-SIZE 24"	FOOT	70	70
54205053	PIPE CULVERTS, SPECIAL 18"	FOOT	40	40
54205059	PIPE CULVERTS, SPECIAL 24"	FOOT	32	32
54215436	CAST-IN-PLACE REINFORCED CONCRETE END SECTIONS 36"	EACH	3	3
54260315	TRAVERSABLE PIPE GRATE FOR CONCRETE END SECTION	FOOT	41	41
54261918	ALUMINUM FLARED END SECTIONS 18"	EACH	2	2

MODEL: Default
 FILE NAME: p:\ultra-cw-bee\p\DOT\Documents\DOT Office\Dir\dir: 3\Project\1036663\CAD\DATA\10366631-ht-500.dgn

USER NAME = Cassandra.Nolasco	DESIGNED -	REVISED -
	DRAWN -	REVISED -
PLOT SCALE = 100,0000 ' / in.	CHECKED -	REVISED -
PLOT DATE = 8/26/2022	DATE -	REVISED -

**STATE OF ILLINOIS
DEPARTMENT OF TRANSPORTATION**

SUMMARY OF QUANTITIES

SCALE: SHEET OF SHEETS STA. TO STA.

F.A.P RTE.	SECTION	COUNTY	TOTAL SHEETS	SHEET NO.
587	(22)RS-7	BUREAU	29	4
			CONTRACT NO. 66M31	
		ILLINOIS	FED. AID PROJECT	

MODEL: Default
 FILE NAME: \\s:\project-pw-bentley.com\PIV\DOT\Documents\DOT Office\Dir\dir: 3\Project\0366M31\CAD\DATA\0366M31-1-1ht-500.dgn

CODE NO.	ITEM	UNIT	TOTAL QUANTITY	CONSTR. CODE	
				80% FED 20% STATE	
				STP	
				ROADWAY	
				0005	
				RURAL	
54261924	ALUMINUM FLARED END SECTIONS 24"	EACH	2		2
54263324	CONCRETE END SECTION, STANDARD 542011, 24", 1:3	EACH	4		4
59300100	CONTROLLED LOW-STRENGTH MATERIAL	CU YD	0.9		0.9
60905305	BOX CULVERTS TO BE CLEANED	FOOT	178		178
* 63000001	STEEL PLATE BEAM GUARDRAIL, TYPE A, 6 FOOT POSTS	FOOT	700		700
* 63000350	LONG-SPAN GUARDRAIL OVER CULVERT, 12 FT 6 IN SPAN	FOOT	25		25
* 63100167	TRAFFIC BARRIER TERMINAL, TYPE 1 (SPECIAL) TANGENT	EACH	8		8
63200310	GUARDRAIL REMOVAL	FOOT	1100		1100
63500105	DELINEATORS	EACH	24		24
67000400	ENGINEER'S FIELD OFFICE, TYPE A	CAL MO	3		3
67100100	MOBILIZATION	L SUM	1		1
70100450	TRAFFIC CONTROL AND PROTECTION, STANDARD 701201	L SUM	1		1
70100460	TRAFFIC CONTROL AND PROTECTION, STANDARD 701306	L SUM	1		1
70300100	SHORT TERM PAVEMENT MARKING	FOOT	2996		2996

*= SPECIALTY ITEM

USER NAME = Cassandra.Nolasco	DESIGNED -	REVISED -	STATE OF ILLINOIS DEPARTMENT OF TRANSPORTATION	SUMMARY OF QUANTITIES				F.A.P. RTE.	SECTION	COUNTY	TOTAL SHEETS	SHEET NO.
PLOT SCALE = 100,0000' / in.	DRAWN -	REVISED -						587	(22)RS-7	BUREAU	29	5
PLOT DATE = 8/26/2022	CHECKED -	REVISED -		SCALE: SHEET OF SHEETS STA. TO STA.				CONTRACT NO. 66M31				
	DATE -	REVISED -		ILLINOIS FED. AID PROJECT								

CODE NO.	ITEM	UNIT	TOTAL QUANTITY	CONSTR. CODE	
				80% FED 20% STATE	
				STP	
				ROADWAY	
				0005	
				RURAL	
70300150	SHORT TERM PAVEMENT MARKING REMOVAL	SQ FT	999		999
* 72501000	TERMINAL MARKER - DIRECT APPLIED	EACH	8		8
* 78009004	MODIFIED URETHANE PAVEMENT MARKING - LINE 4"	FOOT	164432		164432
* 78009006	MODIFIED URETHANE PAVEMENT MARKING - LINE 6"	FOOT	11240		11240
* 78100100	RAISED REFLECTIVE PAVEMENT MARKER	EACH	377		377
* 78200005	GUARDRAIL REFLECTORS, TYPE A	EACH	18		18
78300200	RAISED REFLECTIVE PAVEMENT MARKER REMOVAL	EACH	377		377
X0301735	CONCRETE HEADWALL REPAIR	EACH	1		1
X0326206	RESET GRATE	EACH	7		7
X0326898	CENTER LINE - RUMBLE STRIP - 16"	FOOT	6860		6860
X0327037	SPECIAL GRATE NO. 1	EACH	20		20
X0327809	LINEAR DELINEATOR PANELS, 4 INCH	EACH	18		18
X1200050	BOX CULVERT REMOVAL	FOOT	32		32
X4020700	AGGREGATE SURFACE COURSE, TYPE B 8"	SQ YD	55		55

*= SPECIALTY ITEM

MODEL: Default
FILE NAME: p:\ultra-cw-bee\p\DOT Documents\DOT Office\Dir\dir: 3\Project\10366643\CAD\DATA\10366643-1-1-1-500.dgn

USER NAME = Cassandra.Nolasco	DESIGNED -	REVISED -
	DRAWN -	REVISED -
PLOT SCALE = 100,0000 ' / in.	CHECKED -	REVISED -
PLOT DATE = 8/26/2022	DATE -	REVISED -

**STATE OF ILLINOIS
DEPARTMENT OF TRANSPORTATION**

SUMMARY OF QUANTITIES

SCALE: SHEET OF SHEETS STA. TO STA.

F.A.P. RTE.	SECTION	COUNTY	TOTAL SHEETS	SHEET NO.
587	(22)RS-7	BUREAU	29	6
			CONTRACT NO. 66M31	
ILLINOIS FED. AID PROJECT				

MODEL: Default
 FILE NAME: p:\project\paw_bentley.com\P\I\DOT\Documents\DOT_Offices\Dir\dir_3\Project\0366M31\CAD\DATA\0366M31.rvt-500.dgn

CODE NO.	ITEM	UNIT	TOTAL QUANTITY	CONSTR. CODE	
				80% FED	20% STATE
				STP	
				ROADWAY	
				0005	
				RURAL	
X5010523	REMOVE CONCRETE END SECTION	EACH	5		5
X6050500	REMOVE FRAME AND GRATES, SPECIAL	EACH	4		4
Z0029300	GROUT REPAIR	FOOT	35		35
Z0030850	TEMPORARY INFORMATION SIGNING	SQ FT	42		42
Z0034105	MATERIAL TRANSFER DEVICE	TON	7711		7711
Z0055400	RUMBLE STRIP	FOOT	13720		13720

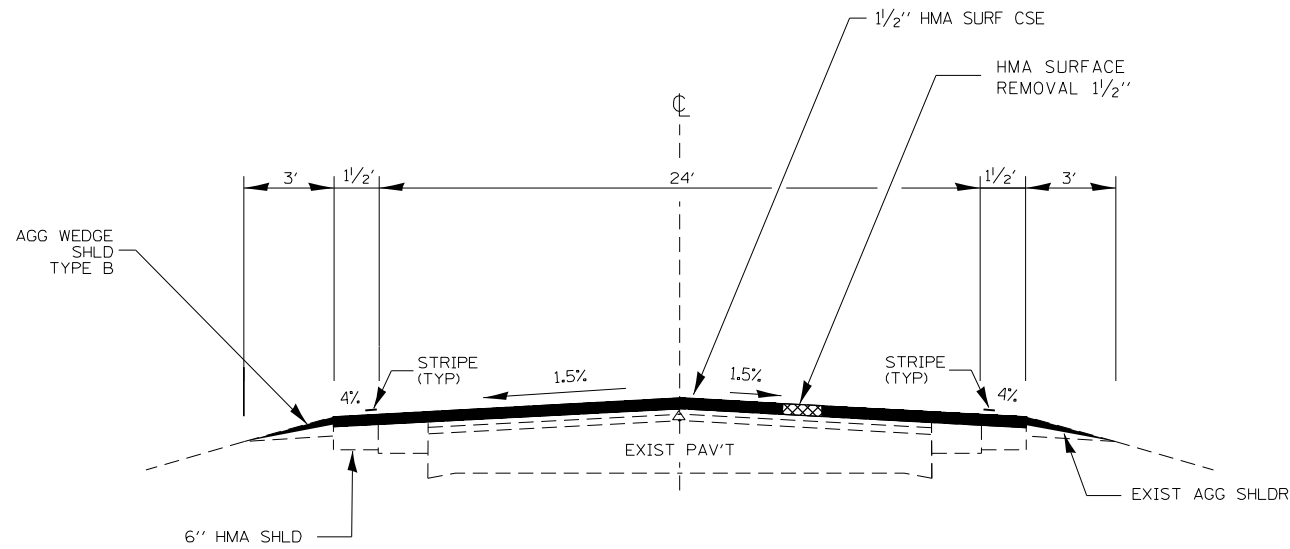
USER NAME = Cassandra.Nolasco	DESIGNED -	REVISED -
	DRAWN -	REVISED -
PLOT SCALE = 100,0000' / in.	CHECKED -	REVISED -
PLOT DATE = 8/26/2022	DATE -	REVISED -

**STATE OF ILLINOIS
DEPARTMENT OF TRANSPORTATION**

SUMMARY OF QUANTITIES

SCALE: SHEET OF SHEETS STA. TO STA.

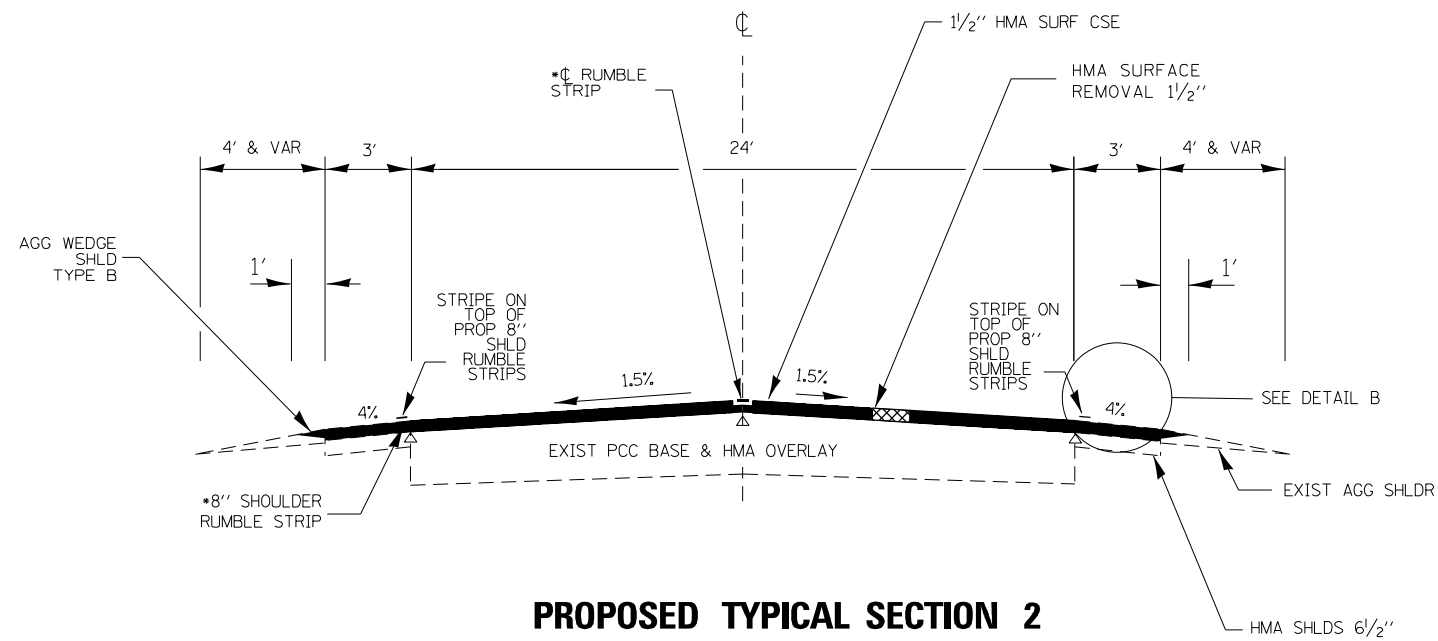
F.A.P. RTE.	SECTION	COUNTY	TOTAL SHEETS	SHEET NO.
587	(22)RS-7	BUREAU	29	7
			CONTRACT NO. 66M31	
		ILLINOIS FED. AID PROJECT		



PROPOSED TYPICAL SECTION 1

STA 816+68 TO STA 907+50
 STA 976+15 TO STA 1088+65
 STA 1093+15 TO STA 1104+96.30 BK
 1105+00 AH TO STA 1116+32

BRIDGE OMISSION SN 006-0183:
 STA 852+44 TO STA 854+09



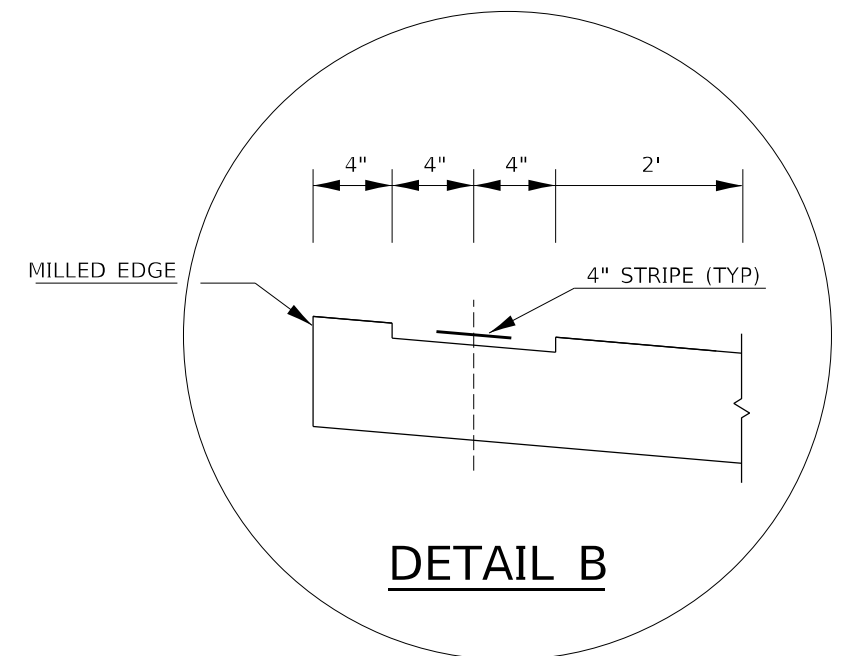
PROPOSED TYPICAL SECTION 2

*STA 907+50 TO STA 949+62.16 BK
 *STA 949+67.00 AH TO 976+15
 STA 1088+65 TO STA 1093+15

***CL & SHOULDER RUMBLE STRIPS
 ONLY AT ASTERISK LOCATIONS**

LONGITUDINAL JOINT SEALANT

NOTE: LONGITUDINAL JOINT SEALANT IS PLACED ON UNDERNEATH THE SURFACE COURSE. FINAL LOCATION OF LONGITUDINAL JOINT SEALANT TO BE DETERMINED BY THE RESIDENT ENGINEER.



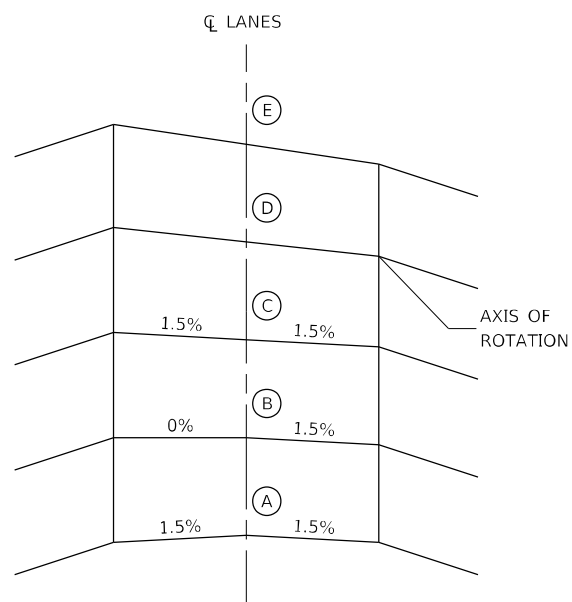
FILE NAME =	USER NAME = Cassandra.Nolasco	DESIGNED -	REVISED -	STATE OF ILLINOIS DEPARTMENT OF TRANSPORTATION	TYPICAL SECTIONS			F.A.P. RTE.	SECTION	COUNTY	TOTAL SHEETS	SHEET NO.
pw:\idot-pw.bentley.com\PWIDOT\Documents\IDOT Offices\District 3\Projects\0366M31\CDRAWN\366M31-sh1-typical.dgn	PLotted Scale = 100.0000' / in.	CHECKED -	REVISED -					587	(22)RS-7	BUREAU	29	8
PLOT DATE = 8/25/2022	DATE -	REVISED -	REVISED -		SCALE: SHEET OF SHEETS STA. TO STA.			CONTRACT NO. 66M31				
ILLINOIS FED. AID PROJECT												

EXIST. CURVE EXCL US6 9
 PI STA. = 928+28.92
 $\Delta = 50^{\circ} 10' 22''$ (LT)
 $D = 4^{\circ} 59' 29''$
 $R = 1,147.91'$
 $T = 537.39'$
 $L = 1,005.20'$
 $E = 119.56'$
 $e =$
 T.R. =
 PI Sta 928+28.92
 S.E. RUN =
 P.C. STA. = 922+91.53
 P.T. STA. = 932+96.73

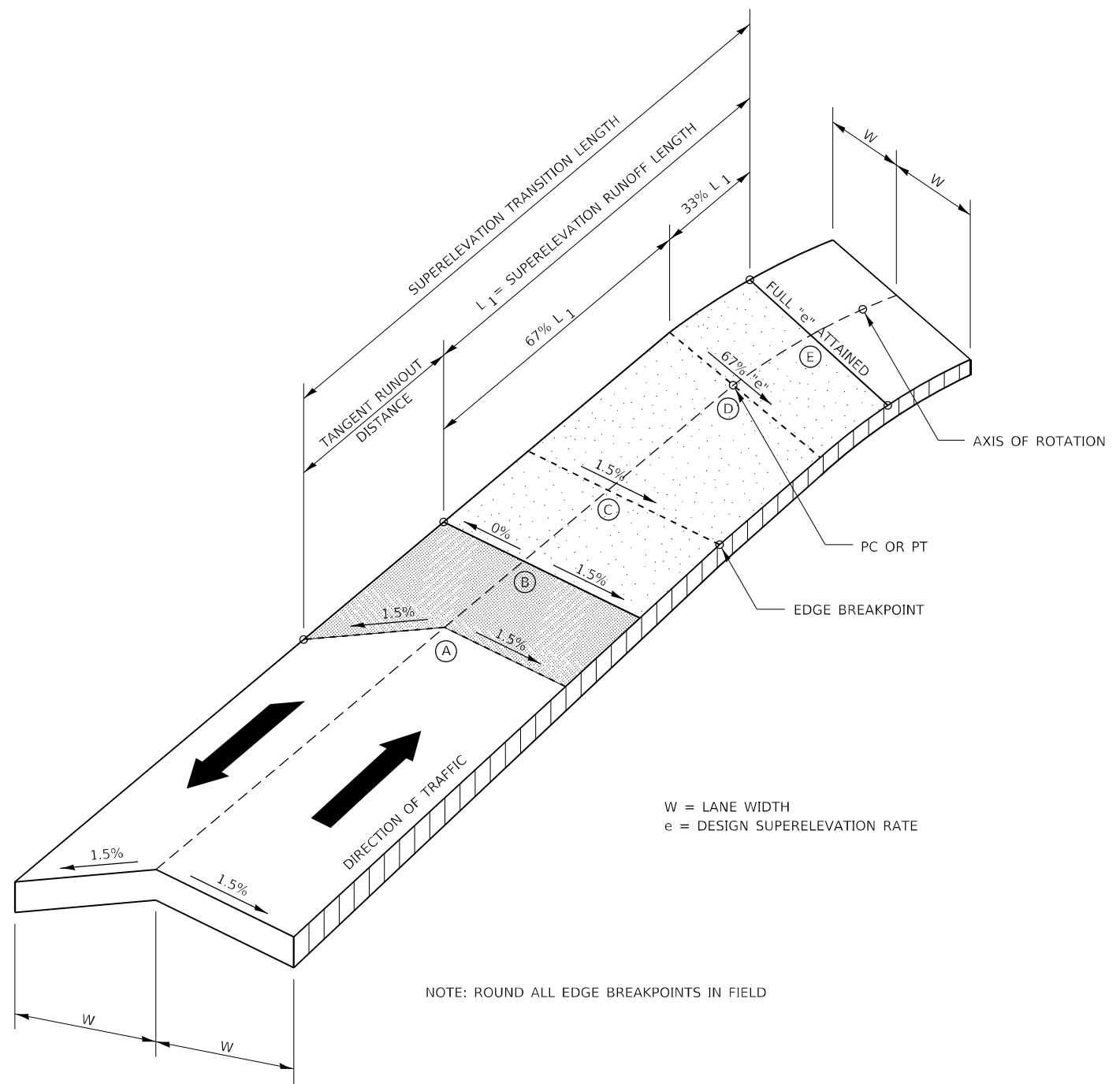
EXIST. CURVE EXCL US6 12
 PI STA. = 944+96.21
 $\Delta = 49^{\circ} 53' 31''$ (RT)
 $D = 4^{\circ} 59' 16''$
 $R = 1,148.74'$
 $T = 534.35'$
 $L = 1,000.30'$
 $E = 118.20'$
 $e =$
 T.R. =
 S.E. RUN =
 P.C. STA. = 939+61.86
 P.T. STA. = 949+62.16

EXIST. CURVE EXCL US6 15
 PI STA. = 1088+56.35
 $\Delta = 35^{\circ} 29' 57''$ (LT)
 $D = 3^{\circ} 00' 00''$
 $R = 1,909.85'$
 $T = 611.33'$
 $L = 1,183.30'$
 $E = 95.46'$
 $e =$
 PI Sta 1088+56.35
 T.R. =
 S.E. RUN =
 P.C. STA. = 1082+45.02
 P.T. STA. = 1094+28.31

FILE NAME =	USER NAME = Cassandra.Nolasco	DESIGNED -	REVISED -	STATE OF ILLINOIS DEPARTMENT OF TRANSPORTATION	CURVE DATA			F.A.P. RTE.	SECTION	COUNTY	TOTAL SHEETS	SHEET NO.
p:\dot-pw.bentley.com\PWIDOT\Documents\IDOT Offices\District 3\Projects\0366M31\CDRAWN\366M31-shr-typcol.dgn		CHECKED -	REVISED -					587	(22)RS-7	BUREAU	29	9
PLOT SCALE = 100.0000' / in.		DATE -	REVISED -					CONTRACT NO. 66M31				
PLOT DATE = 8/25/2022					SCALE:	SHEET	OF	SHEETS	STA.	TO	STA.	ILLINOIS FED. AID PROJECT



**CROSS SECTIONS
SUPERELEVATION DEVELOPMENT
FOR CURVE AT STA**



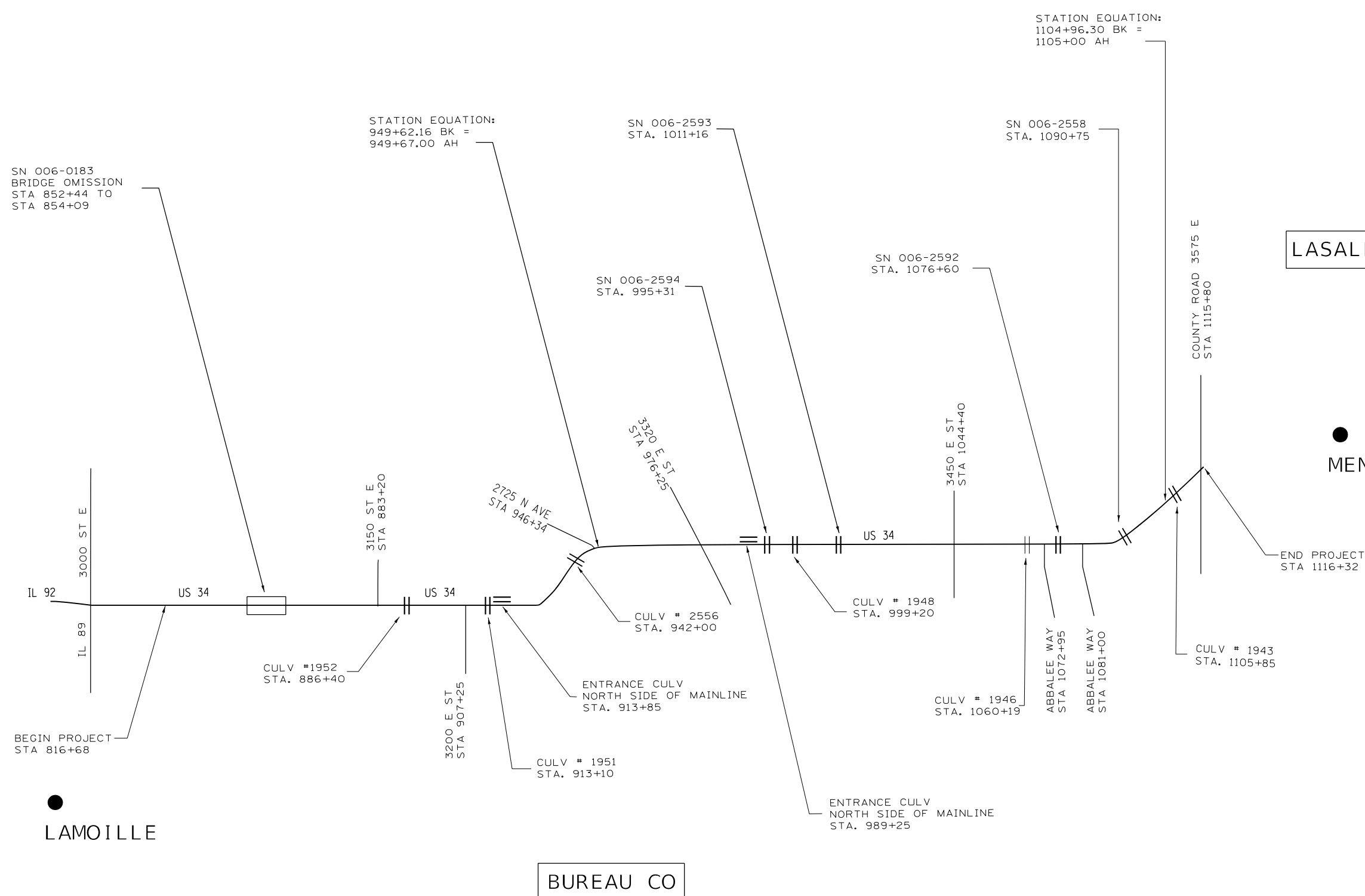
W = LANE WIDTH
e = DESIGN SUPERELEVATION RATE

NOTE: ROUND ALL EDGE BREAKPOINTS IN FIELD

TRANSITION CURVE TABLE

CURVE PI STA.	SUPERELEVATION "e"	W	SUPERELEVATION RUNOFF LENGTH	TANGENT RUNOUT DISTANCE	SUPERELEVATION TRANSITION LENGTH	SUPERELEVATION TRANSITION STATIONS
928+28.92	.08	12	204.48	38.34	242.82	P.C. = 921+16.19 TO 923+59.68 P.T. = 932+28.58 TO 934+72.07
944+96.21	.08	12	204.48	38.34	242.82	P.C. = 937+86.52 TO 940+30.01 P.T. = 948+94.01 TO 951+37.50
1088+56.35	.067	12	171.252	38.34	209.592	P.C. = 1080+91.94 TO 1083+02.10 P.T. = 1093+71.23 TO 1095+81.39

SUPERELEVATION TRANSITION ON TWO-LANE HIGHWAY



MODEL: Default
 FILE NAME: p:\project\666m31\CAD\Drawings\DOT\Office\Drawings\Project\666m31\ch-detail1.dgn

USER NAME = Cassandra.Nolasco	DESIGNED -	REVISED -
DRAWN -	REVISED -	
PLOT SCALE = 100,0000' / in.	CHECKED -	REVISED -
PLOT DATE = 8/25/2022	DATE -	REVISED -

STATE OF ILLINOIS
DEPARTMENT OF TRANSPORTATION

LINE DIAGRAM			
SCALE:	SHEET	OF SHEETS	STA. TO STA.

F.A.P. RTE.	SECTION	COUNTY	TOTAL SHEETS	SHEET NO.
587	(22)RS-7	BUREAU	29	11
CONTRACT NO. 66M31				
ILLINOIS FED. AID PROJECT				

MONUMENT NUMBER	DESCRIPTION	EXISTING MONUMENT TYPE	PROPOSED MONUMENT TYPE	MONUMENT RECORD TO BE RECORDED	RESPONSIBILITY
N/A	NO PERMANENT SURVEY MARKERS OR OTHER MARKERS WERE FOUND WHICH NEED TO BE RESET ON THIS JOB.	N/A	N/A	N/A	N/A

ONLY THE ORIGINAL SCOPE OF THIS JOB HAS BEEN SEARCHED FOR MONUMENTS. R.E. MUST INFORM PLATS AND PLANS TO SEARCH FOR ADDITIONAL MONUMENTS PRIOR TO MILLING IF ADDENDUMS HAVE BEEN ADDED TO THIS JOB.

NO KNOWN LAND SURVEY OR CENTERLINE CONTROL MONUMENTS ARE ON THE ROAD SURFACE THAT WILL BE DISTURBED BY THE SMART OVERLAY.

UNKNOWN MONUMENTS MAY EXIST. IF AN UNLISTED MONUMENT IS FOUND, R.E. IS REQUIRED TO PROTECT THE MONUMENT FROM DAMAGE UNTIL A PLATS AND PLANS LAND SURVEYOR CAN DOCUMENT THE MONUMENT. PLATS AND PLANS WILL RESET SUCH MONUMENTS IN KIND FOLLOWING CONSTRUCTION.

NO MONUMENT RECORDS ARE REQUIRED FOR THIS JOB.

MODEL: Default
FILE NAME: p:\ultra-cw-beaufy.com\P\INDOT\Documents\INDOT Offices\Dir\rdt_3\Project\0366M31\CAD\DATA\0366M31-1-1btr-schedule.dgn

USER NAME = Cassandra.Nolasco	DESIGNED -	REVISED -
	DRAWN -	REVISED -
PLOT SCALE = 100,0000' / in.	CHECKED -	REVISED -
PLOT DATE = 8/25/2022	DATE -	REVISED -

**STATE OF ILLINOIS
DEPARTMENT OF TRANSPORTATION**

PERMANENT SURVEY MARKER TABLE

SCALE: SHEET OF SHEETS STA. TO STA.

F.A.P. RTE.	SECTION	COUNTY	TOTAL SHEETS	SHEET NO.
587	(22)RS-7	BUREAU	29	12
CONTRACT NO. 66M31				
ILLINOIS FED. AID PROJECT				

MAINLINE SCHEDULE													
LOCATION	LENGTH	WIDTH	HMA SURF REM	HMA SURF CSE, IL-9.5 MIX "C" N50 (1 1/2")	MATERIAL TRANSFER DEVICE	MIX CR, JT, & FLGWY	BIT MAT TACK COAT	LONG JOINT SEAL	AGG WEDGE SHLD TYPE B	CENTER LINE - RUMBLE STRIP - 16"	RUMBLE STRIP (LT/RT)		
			1 1/2"	TON	TON	TON	POUND	FOOT	TON	FOOT	FOOT		
RURAL BUREAU COUNTY													
STA 816+68	TO STA 852+44	3576	27	10728	901	901	3.2	7241	3576	272			
STA 852+44	TO STA 854+09	165	27	BRIDGE OMISSION (SN 006-0183)									
STA 854+09	TO STA 907+50	5341	27	16C23	1346	1346	4.8	10816	5341	406			
STA 907+50	TO STA 949+62.16 BK	4212	30	14C40	1179	1179	4.2	9477	12636	107	4212	8424	
STA 949+67.00 AH	TO STA 976+15	2648	30	8827	741	741	2.6	5958	7944	67	2648	5296	
STA 976+15	TO STA 1088+65	11250	27	33750	2835	2835	10.1	22781	11250	854			
STA 1088+65	TO STA 1093+15	450	30	1500	126	126	0.5	1013	1350	11			
STA 1093+15	TO STA 1104+96.30 BK	1181	27	3543	298	298	1.1	2392	1181	90			
STA 1105+00.00 AH	TO STA 1116+32	1132	27	3396	285	285	1	2292	1132	85			
TOTALS				91807	7711	7711	27.5	61970	44410	1893	6860	13720	

SIDEROADS & ENTRANCES SCHEDULE														
STATION	DESCRIPTION	SIDE	WIDTH FRONT	WIDTH BACK	LENGTH	HMA SURF REM	INCIDENTAL HMA SURFACING	BIT MATL (TACK COAT)	FURNISHED EXCAVATION	SEEDING, CLASS 2A	NITROGEN FERTILIZER NUTRIENT (90 LB/ACRE)	PHOSPHORUS FERTILIZER NUTRIENT (90 LB/ACRE)	POTASSIUM FERTILIZER NUTRIENT (90 LB/ACRE)	EROSION CONTROL BLANKET
						1 1/2"	TON	POUND	CU YD	ACRE	POUND	POUND	POUND	SQ YD
824+50	PE	LT	58	36	10	52	4	23						
857+88	PE	RT	56	34	10	50	4	23						
883+20	3150E	LT	55	18	20	81	7	36	1.3	0.00004	0.004	0.004	0.004	0.2
907+25	3200E	RT	74	28	30	170	14	77	2.0	0.00006	0.005	0.005	0.005	0.3
927+00	PE	RT	42	26	10	38	3	17						
927+10	MB	LT	42	22	2	7	1	3						
946+34	2725N	LT	47	16	25	88	7	40	1.6	0.00004	0.004	0.004	0.004	0.2
959+90	PE	RT	28	14	10	23	2	10						
960+00	MB	LT	40	18	2	6	1	3						
976+25	3320E	LT	85	28	40	251	21	113	2.7	0.00006	0.005	0.005	0.005	0.3
976+25	3320E	RT	102	58	30	267	22	120	2.0	0.00006	0.005	0.005	0.005	0.3
989+25	PE	LT	28	19	30	78	7	35						
989+25	MB	RT	80	40	3	20	2	9						
1005+36	PE	LT	57	38	10	53	4	24						
1005+36	MB	RT	95	38	3	22	2	10						
1044+40	3450E	LT	70	32	30	170	14	77	2.0	0.00006	0.005	0.005	0.005	0.3
1044+40	3450E	RT	68	29	30	162	14	73	2.0	0.00006	0.005	0.005	0.005	0.3
1072+95	ABBALLEE WAY	RT	133	63	20	218	18	98	1.3	0.00004	0.004	0.004	0.004	0.2
1081+00	ABBALLEE WAY	RT	118	58	20	196	16	88	1.3	0.00004	0.004	0.004	0.004	0.2
1111+30	GOLF COURSE ENTRANCE	RT	64	40	10	58	5	26						
1115+80	COUNTY LINE ROAD	LT	62	25	30	145	12	65	2.0	0.00006	0.005	0.005	0.005	0.3
1115+80	COUNTY LINE ROAD	RT	74	34	25	150	13	68	1.6	0.00004	0.004	0.004	0.004	0.2
TOTALS						2305	193	1038	20	0.25	23	23	23	3

DITCH CLEANING SCHEDULE						
LOCATION	LENGTH	SIDE	FLOW DIRECTION	GRADING & SHAPING DITCHES	EARTH EXCAVATION	
				FT	CU YD	CU YD
STP-RUR						
STA 906+00 TO STA 907+50	150	NORTH	EAST	150		39.9
STA 976+20 TO STA 980+20	400	NORTH	EAST	400		106.4
STA 999+20 TO STA 1000+70	150	SOUTH	EAST	150		39.9
STA 999+20 TO STA 1000+70	150	NORTH	WEST	150		39.9
STA 1004+30 TO STA 1006+30	200	SOUTH	EAST	200		53.2
STA 1005+70 TO STA 1006+70	100	NORTH	EAST	100		26.6
STA 1049+00 TO STA 1052+00	300	NORTH	EAST	300		79.8
STA 1057+50 TO STA 1060+00	250	NORTH	EAST	250		66.5
STA 1064+00 TO STA 1065+50	150	NORTH	EAST	150		39.9
STA 1073+50 TO STA 1076+00	250	NORTH	EAST	250		66.5
STA 1107+80 TO STA 1108+80	100	SOUTH	WEST	100		26.6
STA 1115+00 TO STA 1115+50	50	SOUTH	EAST	50		13.3
COUNTY LINE RD	25	SW	SOUTH	25		6.7
TOTAL				2275		610

MODEL: P:\default...
 FILE: M:\MIF...
 PROJECT: D:\366M31\CAD\DATA\366M31\CAD\DATA\366M31-1-21-2022.dgn

USER NAME = Cassandra.Nolasco	DESIGNED -	REVISED -
	DRAWN -	REVISED -
PLOT SCALE = 100,0000' / in.	CHECKED -	REVISED -
PLOT DATE = 8/23/2022	DATE -	REVISED -

**STATE OF ILLINOIS
 DEPARTMENT OF TRANSPORTATION**

SCHEDULES				
SCALE:	SHEET	OF	SHEETS	STA. TO STA.

F.A.P. RTE.	SECTION	COUNTY	TOTAL SHEETS	SHEET NO.
587	(22)RS-7	BUREAU	29	13
CONTRACT NO. 66M31				
ILLINOIS FED. AID PROJECT				

GUARDRAIL SCHEDULE												
LOCATION	SIDE	QUAD	LENGTH OF NEED	GUARDRAIL REM	LONG-SPAN GUARDRAIL OVER CULVERT, 12 FT 6 IN SPAN	STEEL PLATE BEAM GUARDRAIL TYPE A, 6 FT POSTS	TBT TYPE 1 (SPL) TANGENT	GUARDRAIL REFLECTORS, TYPE A	TERMINAL MARKER DIRECT APPLIED	LINEAR DELINEATOR PANELS 4 INCH		
			FOOT	FOOT	FOOT	FOOT	EACH	EACH	EACH	EACH		
STA 850+85.03 TO STA 851+22.53	RT	SW	37.50	50.00			1	1	1	1		
STA 851+55.53 TO STA 851+93.03	LT	NW	37.50	50.00			1	1	1	1		
STA 853+34.97 TO STA 853+72.47	RT	SE	37.50	50.00			1	1	1	1		
STA 853+05.47 TO STA 853+42.97	LT	NE	37.50	50.00			1	1	1	1		
STA 1103+16.25 TO STA 1107+66.25	RT	EB	450.00	450.0	12.5	350.0	2	7	2	7		
STA 1104+03.75 TO STA 1108+53.75	LT	WB	450.00	450.0	12.5	350.0	2	7	2	7		
TOTAL				1100.0	25.0	700.0	8.0	18.0	8.0	18.0		

PAVEMENT MARKING SCHEDULE									
LOCATION	LENGTH	MODIFIED URETHANE PAVEMENT MARKING			SHORT TERM PVMT MARK	SHORT TERM PVMT MARK REM	RAISED REFL PVMT MARK	RAISED REFL PVMT MARK REM	
		YELLOW 4"	WHITE 4"	YELLOW 6"	FOOT	SQ FT	EACH	EACH	
STATION TO STATION	FOOT	FOOT	FOOT	FOOT	FOOT	SQ FT	EACH	EACH	
816+68 TO 907+29	9061	8136	36016	3980	908	303	114	114	
907+29 TO 949+62.16	4233.16	13264	16850	740	424	141	53	53	
949+62.16 BK = 949+67 AH									
949+67 TO 1104+96.30	15529.3	20272	61112	6520	1552	517	195	195	
1104+96.30 BK = 1105+00 AH									
1105+00 TO 1116+32	1132	4528	4254		112	37	15	15	
SUBTOTALS		46200	118232	11240	2996	999	377	377	
TOTALS		164432		11240	2996	999	377	377	

NOTE: ALL MODIFIED URETHANE PAVEMENT MARKING QUANTITIES REPRESENT 2 APPLICATIONS; THE SECOND APPLICATION APPLIED MINIMUM 14 DAYS AFTER THE FIRST APPLICATION

PATCHING SCHEDULE					
LOCATION	PATCH LENGTH	PATCH WIDTH	CLASS B PATCHES, TYPE III, 12 IN	DOWEL BARS 1 1/2"	SAW CUTS
STATION	FOOT	FOOT	SQ YD	EACH	FOOT
999+20	13.5	14	21	12	69
999+20	13.5	14	21	12	69
TOTAL			42	24	138

DELINEATOR SCHEDULE				
STA	SN NO.	SIDE	SIZE/TYPE	DELINEATORS EA
STP-RUR				
886+40	1952	N	2X1.5 BOX	2
912+75		N	15" CMP	2
913+10	1951	S	3X2 BOX	2
942+00	2556	SE	3X2 BOX	2
989+25		N	18" CMP	2
1011+16	006-2593	S	DBL 4X2.5 BOX	2
1060+19	1946	N & S	4X2 BOX	2
1076+60	006-2592	N TO S	6X2.5 BOX	2
1090+75	006-2558	N TO S	9X3 BOX	2
1105+85	1943	N	5X5 BOX	2
995+31	006-2594	N TO S	DBL 5X1.5 BOX	2
999+20	1948	N TO S	4X1.5 BOX	2
TOTAL				24

MODEL: P:\default... FILE: M:\MFC... \Project\DOT Documents\DOT Office\Dir\dir... \Project\DOT\366M31\CAD\DATA\366M31-2ht-schedule.dgn

USER NAME = Cassandra.Nolasco	DESIGNED -	REVISED -
	DRAWN -	REVISED -
PLOT SCALE = 100,0000 ' / in.	CHECKED -	REVISED -
PLOT DATE = 8/23/2022	DATE -	REVISED -

**STATE OF ILLINOIS
DEPARTMENT OF TRANSPORTATION**

SCHEDULES			
SCALE:	SHEET	OF	SHEETS

F.A.P RTE.	SECTION	COUNTY	TOTAL SHEETS	SHEET NO.
587	(22)RS-7	BUREAU	29	14
CONTRACT NO. 66M31				
ILLINOIS FED. AID PROJECT				

CULVERT SCHEDULE																			
STA	SN NO.	SIDE	SIZE/TYPE	WORK DESCRIPTION	PIPE CULV REM	PIPE CULVERTS, SPECIAL 18"	PIPE CULVERTS, SPECIAL 24"	ALUMINUM FLARED END SEC 18"	ALUMINUM FLARED END SEC 24"	BOX CULV REM	REM CONC END SEC	CAST-IN-PLACE REINFORCED CONC END SEC 36"	CONC END SEC STD 542011 24" 1:3	PIPE CULV CL A, TY 1 EQUIVALENT ROUND-SIZE 24"	TRVS PIPE GR FOR CONC END SEC	TRENCH BACKFILL	STONE RIPRAP CLASS A4	FILTER FABRIC	AGG SURF CSE TY B 8"
					FT	FT	FT	EA	EA	FT	EA	EA	EA	EA	FT	FT	CU YD	SQ YD	SQ YD
STP-RUR																			
913+10	1951	S	3X2 BOX	REP OF END SEC & BLDG UP THE EMBANKMENT ALONG OUTSIDE FACES OF THE S END SEC W RR							2	2			16.4		29	29	
913+85		N	15" CMP	REP OF 15" CMP FIELD ENTRANCE CULVERT W 18" ARCH CMP	56	40		2									27	27	27
942+00	2556	SE	3X2 BOX	REP OF SE END SEC W A TAPERED END SEC WITH TRAVERSABLE GRATE						1	1				8.2				
989+25		N	18" CMP	REP OF 18" CMP FIELD ENTRANCE CULVERT W 24" ARCH CMP	48		32		2								28	28	28
999+20	1948	N TO S	4X1.5 BOX	REP OF CULV W TWIN 24" ELLIPTICAL CONC PIPES & STD 542011 END SEC W 1:3 SLOPE AND TRVS GR						32	2		4	70	16.4	18	48	48	
TOTAL					104	40	32	2	2	32	5	3	4	70	41	18	132	132	55

NOTE: METAL END SECTION REMOVAL WILL BE INCLUDED IN THE COST OF PIPE CULVERT REMOVAL.

DRAINAGE SCHEDULE													
STATION	SN NO.	SIDE	SIZE/TYPE	WORK DESCRIPTION	RESET GRATE	STONE RIPRAP CLASS, A4	FILTER FABRIC	BOX CULV TO BE CLEANED	CONC HDW REPAIR	CONTROLLED LOW-STRENGTH MATERIAL	GROUT REPAIR *	REM F&G, SPL	SPECIAL GRATE NO. 1
					EACH	SQ YD	SQ YD	FOOT	EACH	CU YD	FOOT	EACH	EACH
STP-RUR													
886+40	1952	N	2X1.5 BOX	RE-MOUNTING THE NORTH GRATE TO THE HEADWALL	1								
995+31	006-2594	N TO S	DBL 5X1.5 BOX	REP OF BROKEN GR ON N. SIDE. SECURE ALL GR TO HDW, CLEAN BOTH BARRELS, GROUT REPAIR TO S. HDW	4			88			35	4	4
1011+16	006-2593	S	DBL 4X2.5 BOX	REP OF BTM RETICULINE GR PANEL ON EA SIDE & BLDG UP THE EMBANKMENT ALONG OUTSIDE FACES OF S END SECT W RR		39	39						8
1060+19	1946	N & S	4X2 BOX	REP THE BOTTOM RETICULINE GRATE PANEL ON EACH SIDE									8
1076+60	006-2592	N TO S	6X2.5 BOX	RE-MOUNTING THE FAILED GRATE TO THE HEADWALL ON EACH SIDE	2								
1090+75	006-2558	N TO S	9X3 BOX	PLACING 12 X 3 APRON OF RR4 ALONG THE UPSTREAM WEIR FACE AT SN 006-2558 AND CLEANING THE BARREL		4	4	90					
1105+75	GUT OUTLET	S		PLACING CLSM IN THE VOID UNDER THE GUTTER OUTLET NEAR STA 1105+75 RT						0.9			
1105+85	1943	N	5X5 BOX	CONCRETE REPAIR AT CULVERT #1943 ALONG THE NORTH BARREL/HEADWALL JOINT					1				
TOTAL					7	43	43	178	1	0.9	35	4	20

*GROUT REPAIR AT SOUTH END SECTION TO RESTORE HEADWALL WHERE THE DEPTH OF SPALLING IS ALLOWING THE AGGREGATE SHOULDER TO WASH INTO THE END SECTION, CAUSING LOSS OF SUPPORT FOR THE EDGE OF PAVEMENT. SEE SPECIAL PROVISION.

SEEDING SCHEDULE FOR GRADING & SHAPING									
LOCATION	SIDE	LENGTH	WIDTH	SEEDING, CLASS 2A	NITROGEN FERTILIZER NUTRIENT (90 LB/ACRE)	PHOSPHORUS FERTILIZER NUTRIENT (90 LB/ACRE)	POTASSIUM FERTILIZER NUTRIENT (90 LB/ACRE)	EROSION CONTROL BLANKET	
					FOOT	FOOT	ACRE		POUND
STP-RUR									
STA 906+00 TO STA 907+50	NORTH	150	14	0.048	4.3	4.3	4.3	233	
STA 976+20 TO STA 980+20	NORTH	400	14	0.129	11.6	11.6	11.6	622	
STA 999+20 TO STA 1000+70	SOUTH	150	14	0.048	4.3	4.3	4.3	233	
STA 999+20 TO STA 1000+70	NORTH	150	14	0.048	4.3	4.3	4.3	233	
STA 1004+30 TO STA 1006+30	SOUTH	200	14	0.064	5.8	5.8	5.8	311	
STA 1005+70 TO STA 1006+70	NORTH	100	14	0.032	2.9	2.9	2.9	156	
STA 1049+00 TO STA 1052+00	NORTH	300	14	0.096	8.6	8.6	8.6	467	
STA 1057+50 TO STA 1060+00	NORTH	250	14	0.08	7.2	7.2	7.2	389	
STA 1064+00 TO STA 1065+50	NORTH	150	14	0.048	4.3	4.3	4.3	233	
STA 1073+50 TO STA 1076+00	NORTH	250	14	0.08	7.2	7.2	7.2	389	
STA 1107+80 TO STA 1108+80	SOUTH	100	14	0.032	2.9	2.9	2.9	156	
STA 1115+00 TO STA 1115+50	SOUTH	50	14	0.016	1.4	1.4	1.4	78	
COUNTY LINE RD	SW	25	14	0.008	0.7	0.7	0.7	39	
TOTALS					0.75	68	68	68	3539

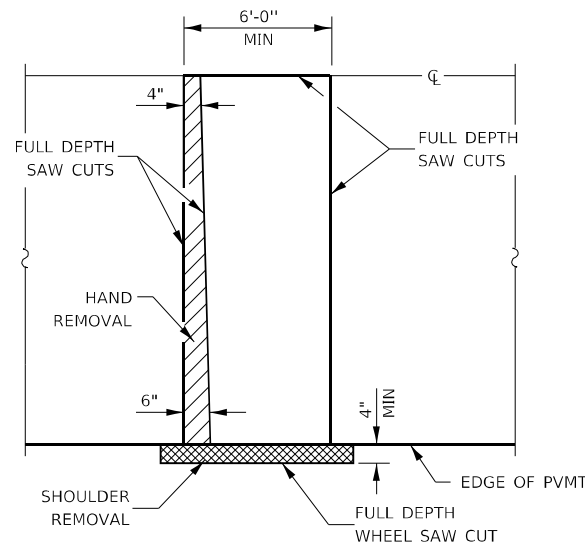
MODEL: Default
 FILE: \\blm\p\p\uldrct-pw-bentley.com\FW\DOT\Documents\DOT Office\Dir\drct_3\Project\10366643\CAD\DATA\10366643-1-drct-schedule.dgn

USER NAME = Cassandra.Nolasco	DESIGNED -	REVISED -
	DRAWN -	REVISED -
PLOT SCALE = 100,0000' / in.	CHECKED -	REVISED -
PLOT DATE = 8/26/2022	DATE -	REVISED -

**STATE OF ILLINOIS
DEPARTMENT OF TRANSPORTATION**

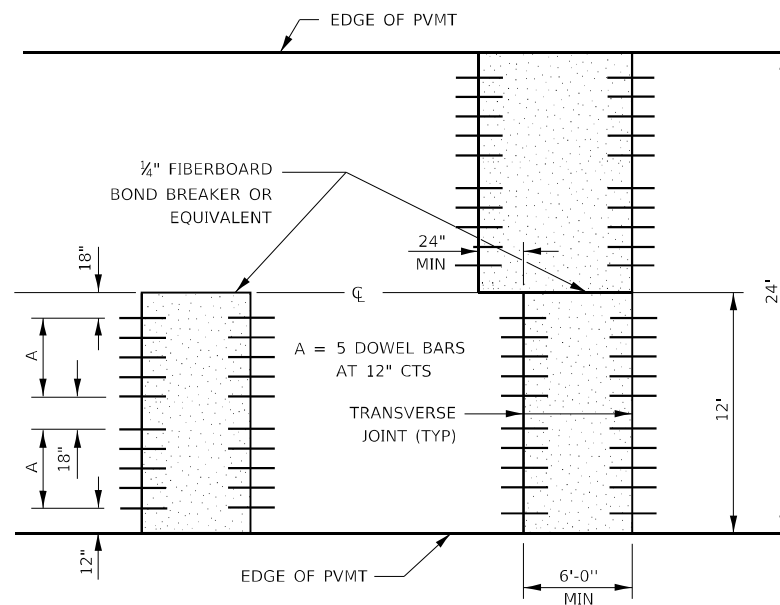
SCHEDULES			
SCALE:	SHEET	OF	SHEETS
	STA.	TO	STA.

F.A.P. RTE.	SECTION	COUNTY	TOTAL SHEETS	SHEET NO.
587	(22)RS-7	BUREAU	29	15
CONTRACT NO. 66M31				
ILLINOIS FED. AID PROJECT				

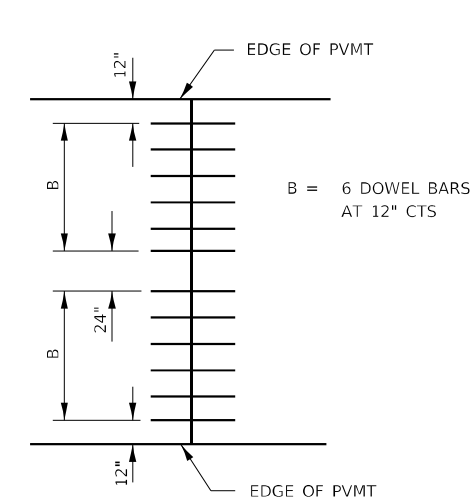


PAVEMENT SAWING DETAIL

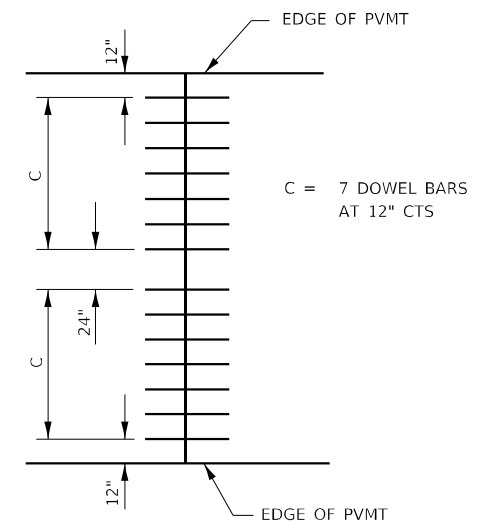
(HMA SHOULDER)



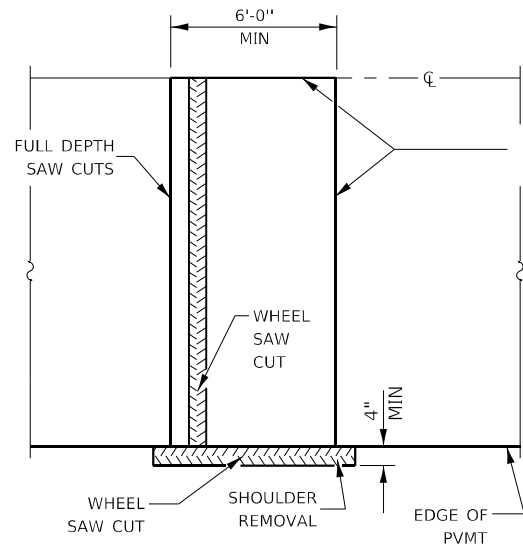
12' WIDE LANES



14' WIDE RAMP

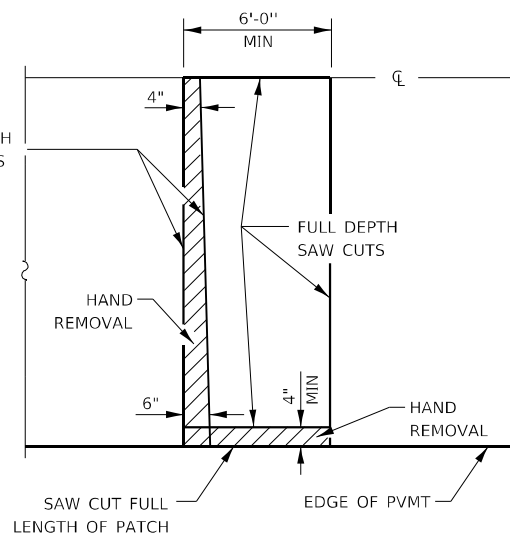


16' WIDE RAMP



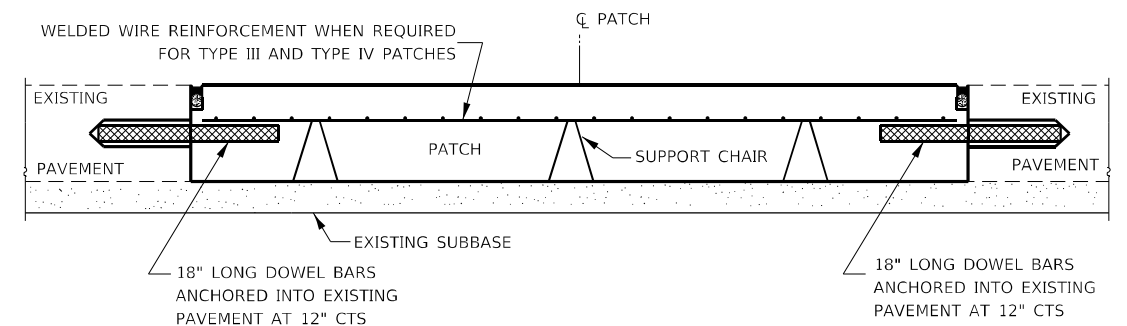
ALTERNATE SAWING DETAIL

(HMA SHOULDER)

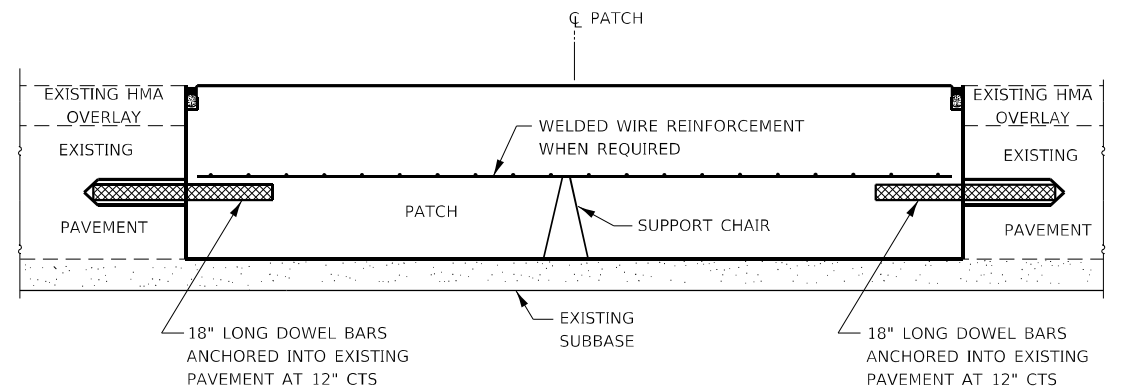


PAVEMENT SAWING DETAIL

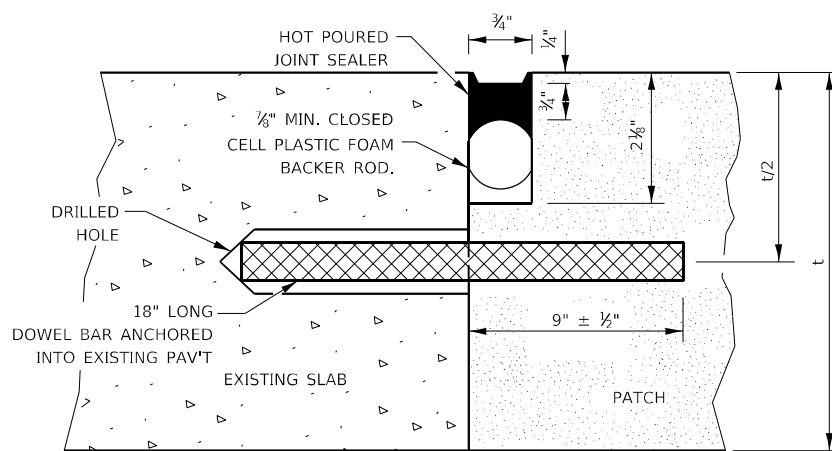
(PCC SHOULDER)



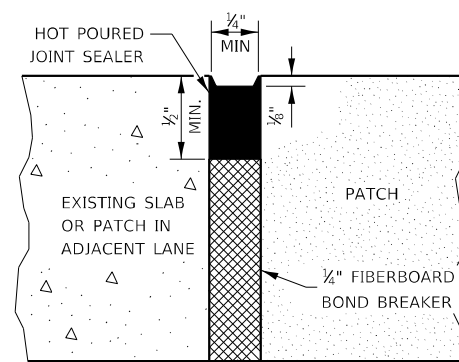
PATCHING WITHOUT HMA OVERLAY



PATCHING WITH HMA OVERLAY



TRANSVERSE JOINT



CENTERLINE JOINT

DOWEL BAR TABLE		
PAVEMENT THICKNESS	DOWEL BAR DIAMETER	HOLE DIAMETER
8" OR GREATER	1 1/2"	1 3/8"
7" THRU 7.99"	1 1/4"	1 3/8"
LESS THAN 7"	1"	1 1/8"

GENERAL NOTES

THE TRANSVERSE JOINTS FOR CLASS B PATCHES SHALL ALIGN WITH JOINTS OR CRACKS IN THE ADJACENT LANE WHENEVER POSSIBLE.

SEE STANDARD 420701 FOR DETAILS OF PAVEMENT WELDED WIRE REINFORCEMENT.

MODEL: Default
FILE NAME: p:\project-aw-bead-fy.com\p\INDOT\Documents\DOT Office\Drawings\Project\66M31\CAD\Drawings\66M31-2b-detailed.dgn

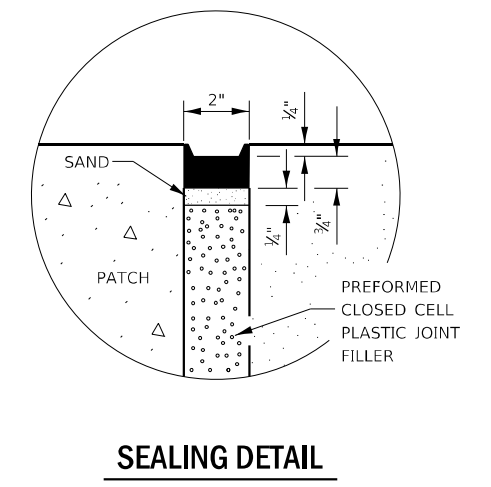
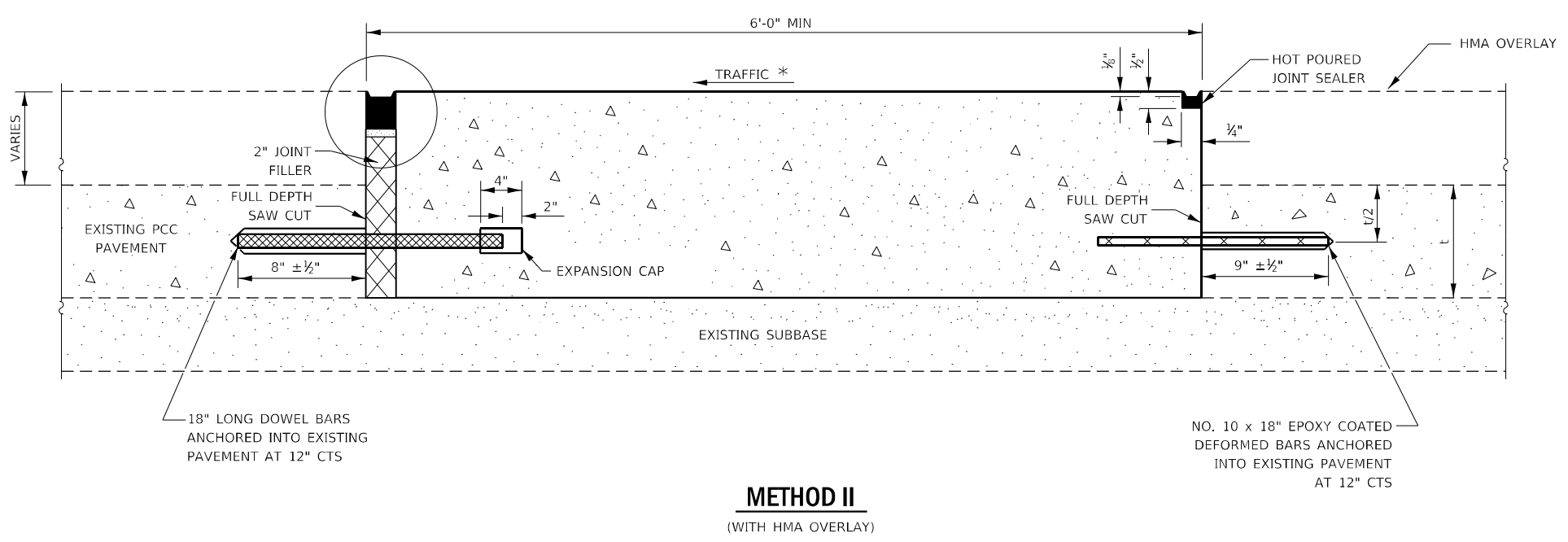
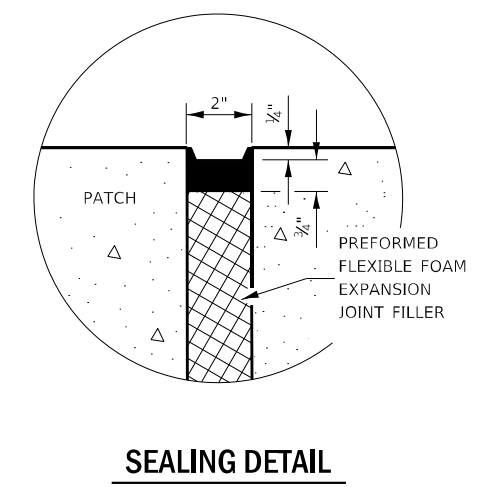
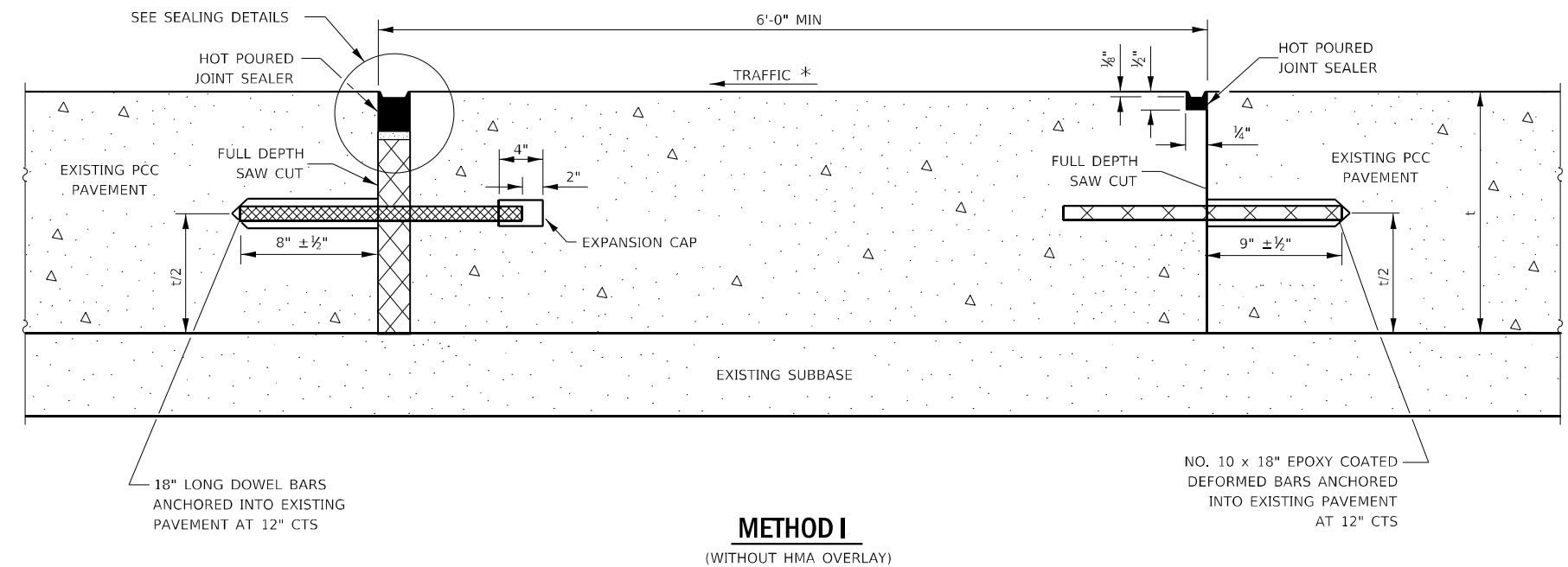
USER NAME = Cassandra.Nolasco	DESIGNED -	REVISED -
PLOT SCALE = 100,0000' / in.	DRAWN -	REVISED -
PLOT DATE = 8/25/2022	CHECKED -	REVISED -
	DATE -	REVISED -

**STATE OF ILLINOIS
DEPARTMENT OF TRANSPORTATION**

CLASS B PATCHING DETAILS

SCALE: SHEET OF SHEETS STA. TO STA.

F.A.P. RTE.	SECTION	COUNTY	TOTAL SHEETS	SHEET NO.
587	(22)RS-7	BUREAU	29	16
CONTRACT NO. 66M31				
ILLINOIS FED. AID PROJECT				



NOTE

* WHEN RE-ESTABLISHING A TRANSVERSE EXPANSION JOINT ON A TWO-WAY ROAD, REVERSE THE ORIENTATION OF THE DOWEL BARS WITH RESPECT TO TRAFFIC FOR ONE OF THE PATCHES SUCH THAT THE JOINT WILL BE CONTINUOUS ACROSS BOTH LANES.

MODEL: Default
FILE NAME: p:\project-aw-beadley.com\PIV\DOT\Documents\DOT Office\Dir\drf_3\Project\0366643\0366643-1-2ht-details.dgn

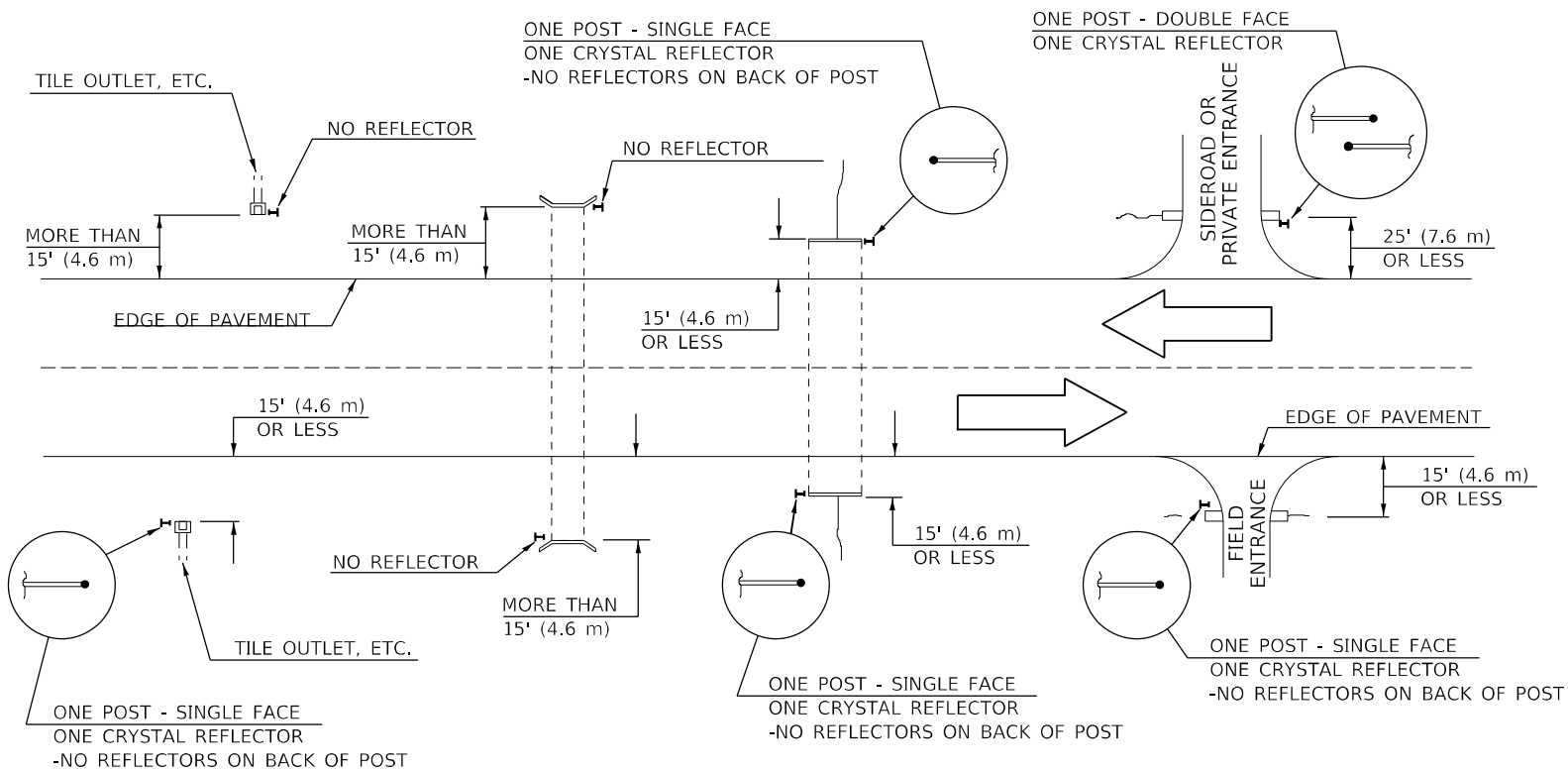
USER NAME = Cassandra.Nolasco	DESIGNED -	REVISED -
PLOT SCALE = 100,0000' / in.	DRAWN -	REVISED -
PLOT DATE = 8/23/2022	CHECKED -	REVISED -
	DATE -	REVISED -

STATE OF ILLINOIS
DEPARTMENT OF TRANSPORTATION

CLASS B PATCHING DETAILS

SCALE: SHEET OF SHEETS STA. TO STA.

F.A.P. RTE.	SECTION	COUNTY	TOTAL SHEETS	SHEET NO.
587	(22)RS-7	BUREAU	29	17
CONTRACT NO. 66M31				
ILLINOIS FED. AID PROJECT				



IDENTIFICATION OF ROADSIDE HAZARDS FOR TWO-LANE ROADWAYS

BILL OF MATERIALS

DELINEATOR TYPE	SINGLE FACE	DOUBLE FACE	NO REFLECTOR	TOTAL DELINEATORS
SINGLE CRYSTAL	24		N/A	24
SINGLE CRYSTAL			TOTAL	24

NOTES

DELINEATORS FOR ROADSIDE HAZARDS SHALL ONLY BE PLACED AT LOCATIONS WHERE THERE IS NO GUARDRAIL, OR OTHER PERMANENT BARRIER, ON THE SAME SIDE OF ROAD AS THE HAZARD.

DELINEATORS FOR ROADSIDE HAZARDS SHALL ONLY BE PLACED AT LOCATIONS WHERE DELINEATORS ARE NOT IN PLACE ALONG THE EDGE OF SHOULDER.

EACH POST SHALL BE CONSIDERED AS ONE DELINEATOR FOR PAYMENT, REGARDLESS OF THE NUMBER OF DELINEATORS ATTACHED TO IT.

FOR ONE-WAY ROADWAYS THE APPLICATION SHALL BE SIMILAR WITH DELINEATORS PLACED ON THE TRAFFIC APPROACH SIDE OF HAZARDS AND OBJECTS. ONLY SINGLE FACE DELINEATORS WILL BE REQUIRED ON ONE-WAY ROADWAYS. CRYSTAL ON RIGHT SIDE, AMBER ON LEFT.

FOR OTHER DELINEATOR APPLICATIONS, REFER TO HIGHWAY STANDARD 635001.

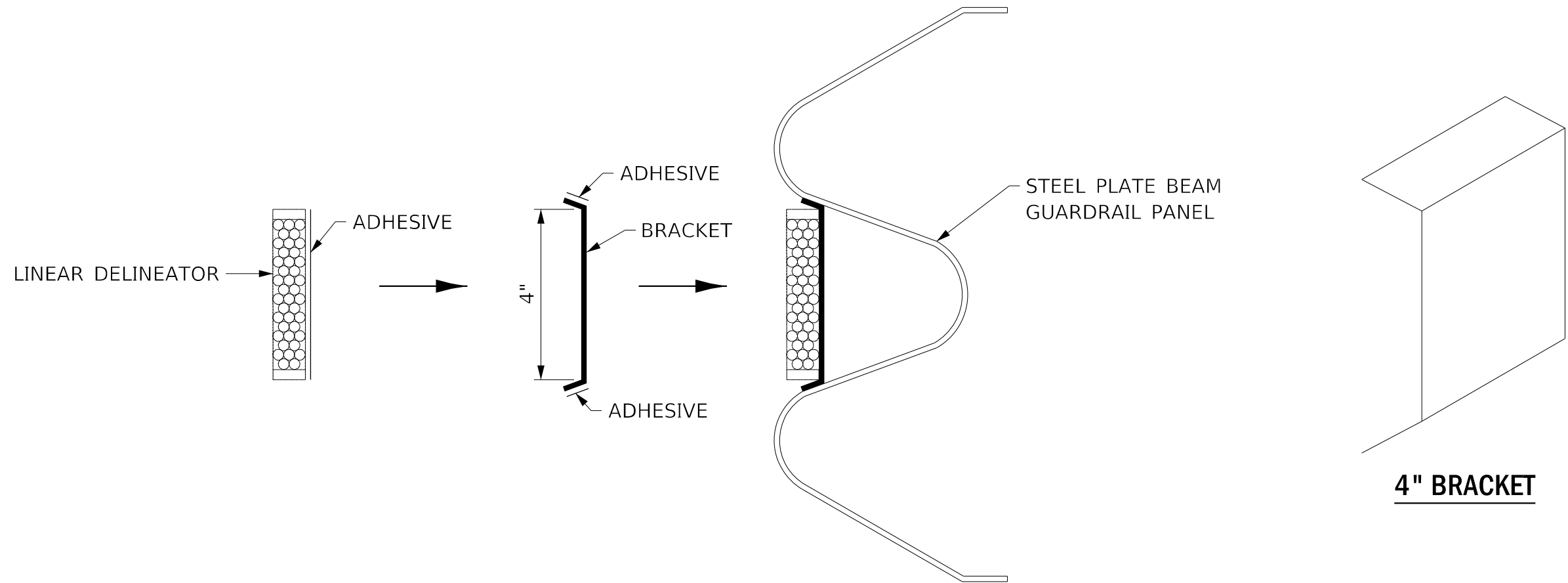
MODEL: Default
 FILE NAME: p:\project-aw-beadley.com\PIV\DOT\Documents\DOT Office\Dir\Dir: 3\Project\0366643\CAD\Draw: 0366643-1-2ht-detail.dgn

USER NAME = Cassandra.Nolasco	DESIGNED -	REVISED -
PLOT SCALE = 100,0000' / in.	DRAWN -	REVISED -
PLOT DATE = 8/23/2022	CHECKED -	REVISED -
	DATE -	REVISED -

**STATE OF ILLINOIS
DEPARTMENT OF TRANSPORTATION**

DELINEATOR DETAILS	
SCALE:	SHEET OF SHEETS STA. TO STA.

F.A.P. RTE.	SECTION	COUNTY	TOTAL SHEETS	SHEET NO.
587	(22)RS-7	BUREAU	29	18
CONTRACT NO. 66M31				
ILLINOIS FED. AID PROJECT				



LINEATOR DELINEATOR APPLICATION TO STANDARD GALVANIZED GUARDRAIL

LINEATOR DELINEATOR SHALL BE APPLIED ACCORDING TO THE MANUFACTURER'S RECOMMENDATIONS

MODEL: Default
 FILE NAME: p:\bullet-aw-bead-ay.com\FW\DOT Documents\DOT Office\Dir\det_3\Project\0366M31\CAD\Date\0366M31-2ht-detail.dgn

USER NAME = Cassandra.Nolasco	DESIGNED -	REVISED -
	DRAWN -	REVISED -
PLOT SCALE = 100,0000 ' / in.	CHECKED -	REVISED -
PLOT DATE = 8/25/2022	DATE -	REVISED -

**STATE OF ILLINOIS
DEPARTMENT OF TRANSPORTATION**

LINEATOR DELINEATOR PANEL DETAILS

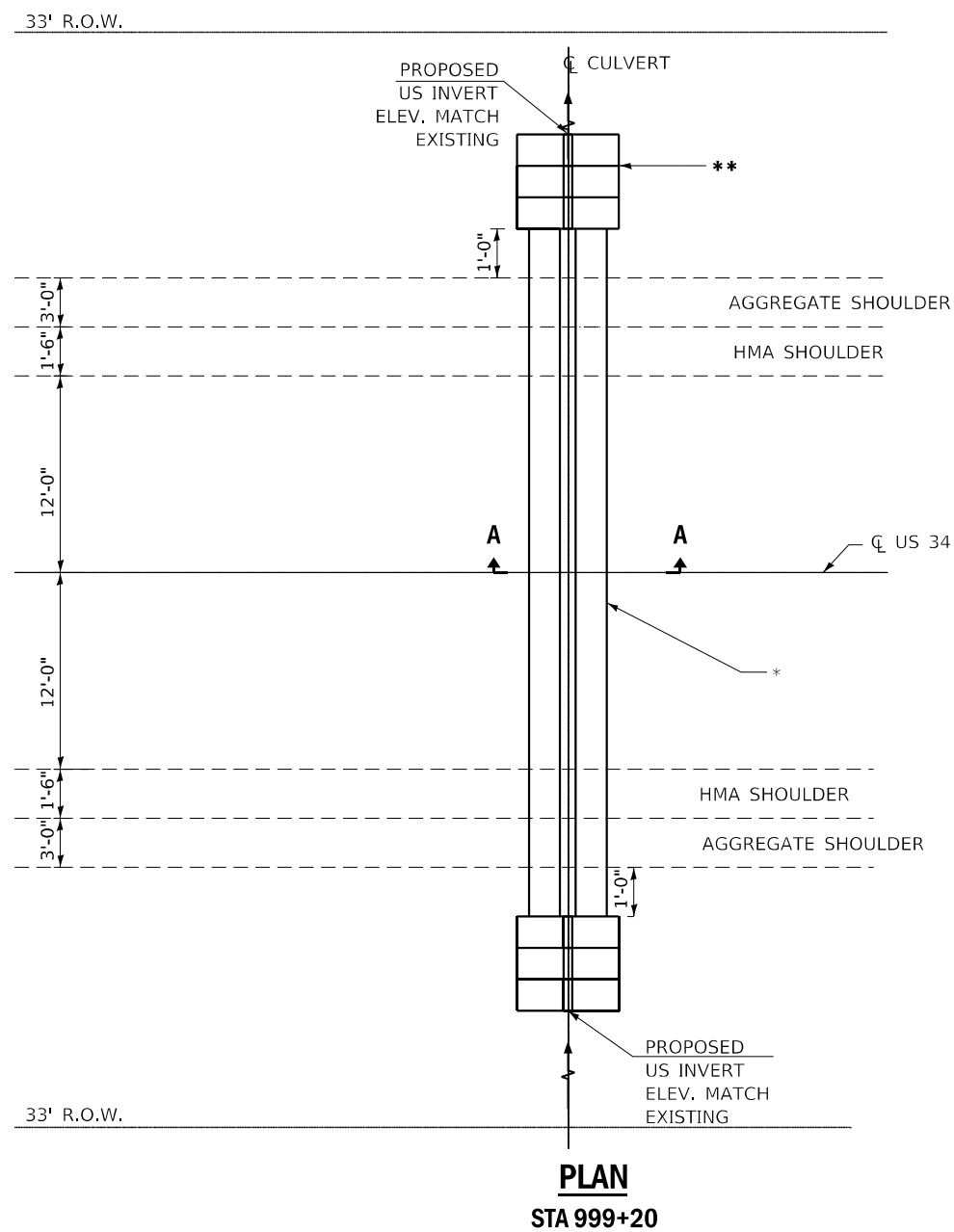
SCALE: SHEET OF SHEETS STA. TO STA.

F.A.P. RTE.	SECTION	COUNTY	TOTAL SHEETS	SHEET NO.
587	(22)RS-7	BUREAU	29	19
			CONTRACT NO. 66M31	
ILLINOIS FED. AID PROJECT				

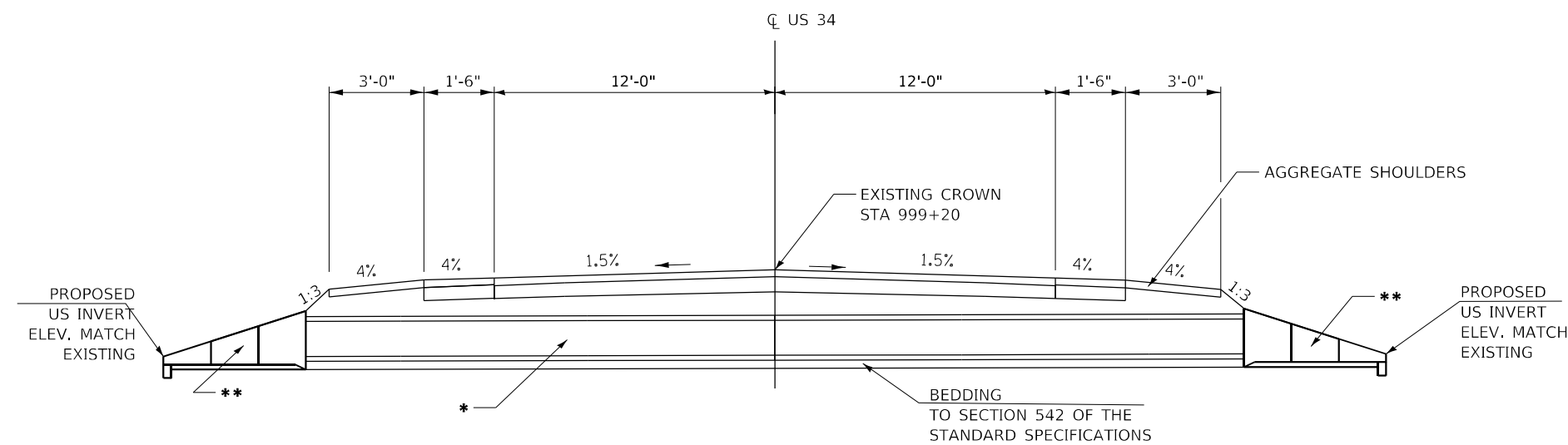


* - PROPOSED TWIN PIPE CULVERT CLASS A, TYP 2, 24"

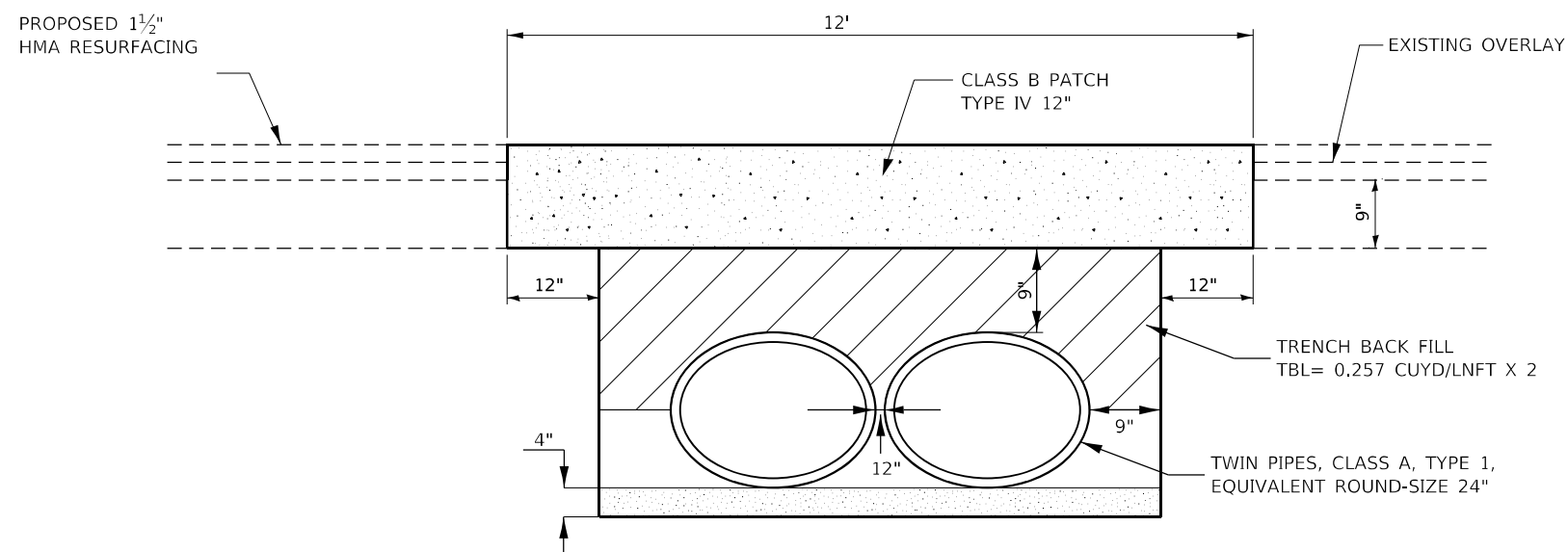
** - PROPOSED CONCRETE END SECTION 542011, 24", 1:3 (EACH), 2



PLAN
STA 999+20



CROSS SECTION
CULVERT # 1948
STA 999+20



SECTION A-A



NOTES:

1. REMOVE THE EXISTING 4'X1.5' BOX CULVERT.
2. INSTALL TWIN PRECAST 32'X24" RCEP WITH TAPERED END SECTION (1:3)
3. INSTALL RR4 PER SCHEDULE

MODEL: Default
 FILE: 666M31_1948_Culvert.dwg
 PROJECT: 666M31_1948_Culvert.dwg
 USER: cnolasco
 DATE: 8/23/2022

USER NAME = Cassandra.Nolasco	DESIGNED -	REVISED -
PLOT SCALE = 100,0000' / in.	DRAWN -	REVISED -
PLOT DATE = 8/23/2022	CHECKED -	REVISED -
	DATE -	REVISED -

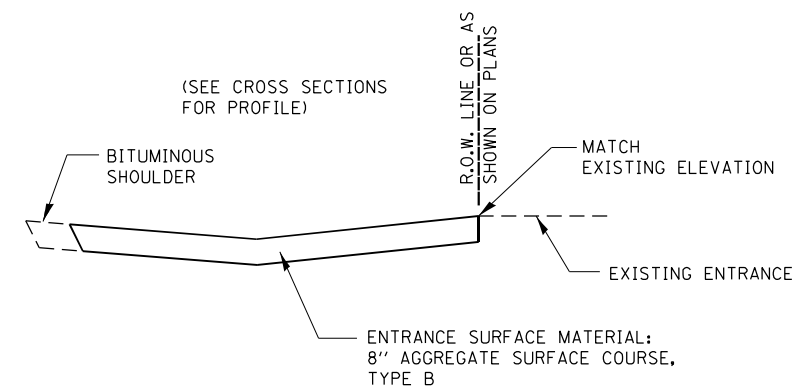
STATE OF ILLINOIS
DEPARTMENT OF TRANSPORTATION

CULVERT # 1948 DETAILS STA 999 + 20

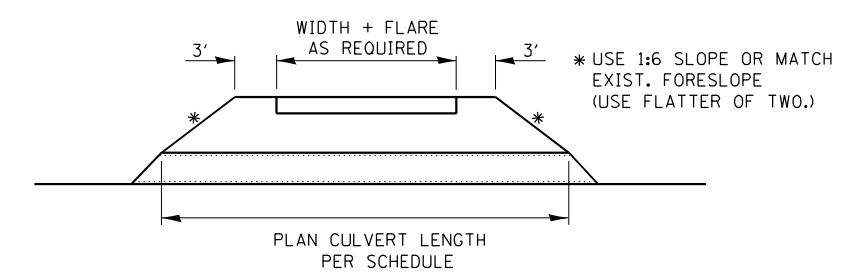
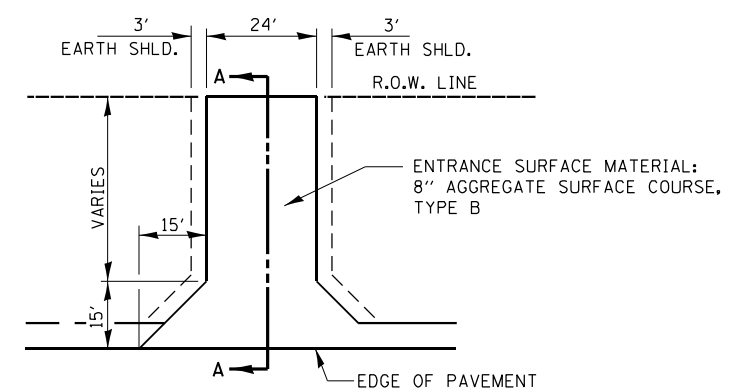
SCALE: SHEET OF SHEETS STA. TO STA.

F.A.P. RTE.	SECTION	COUNTY	TOTAL SHEETS	SHEET NO.
587	(22)RS-7	BUREAU	29	20
CONTRACT NO. 66M31				
ILLINOIS FED. AID PROJECT				

MODEL: Default
 FILE: \\nlsr01-pw-bea-fay.com\P\I\DOT\Documents\DOT Office\Dir\rdt_3\Project\0366M31\CAD\Drawn\0366M31-entr-detail.dgn



SECTION A-A



FIELD ENTRANCE DETAIL

USER NAME = Cassandra.Nolasco	DESIGNED -	REVISED -
PLOT SCALE = 100,0000' / in.	DRAWN -	REVISED -
PLOT DATE = 8/23/2022	CHECKED -	REVISED -
	DATE -	REVISED -

**STATE OF ILLINOIS
DEPARTMENT OF TRANSPORTATION**

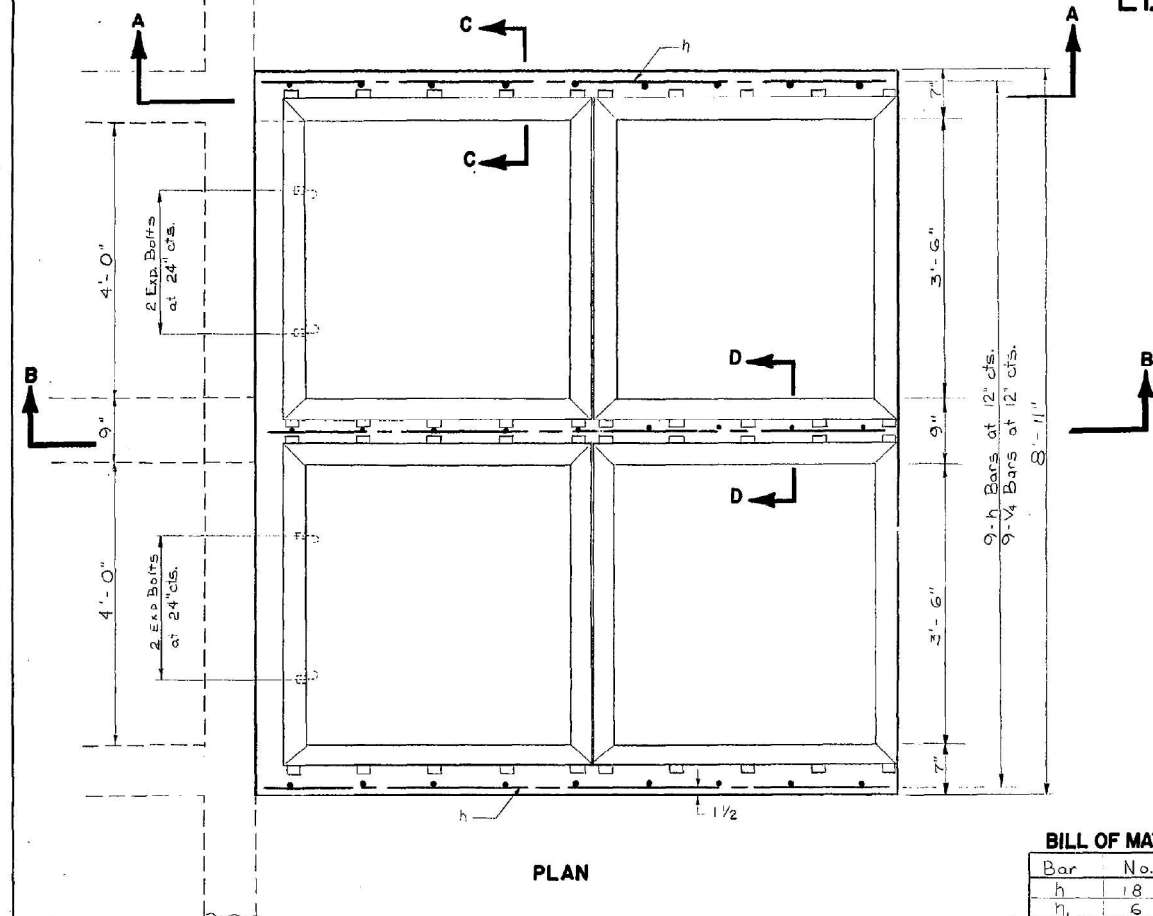
ENTRANCE CULVERT DETAILS 913+85 & 989+25

SCALE: SHEET OF SHEETS STA. TO STA.

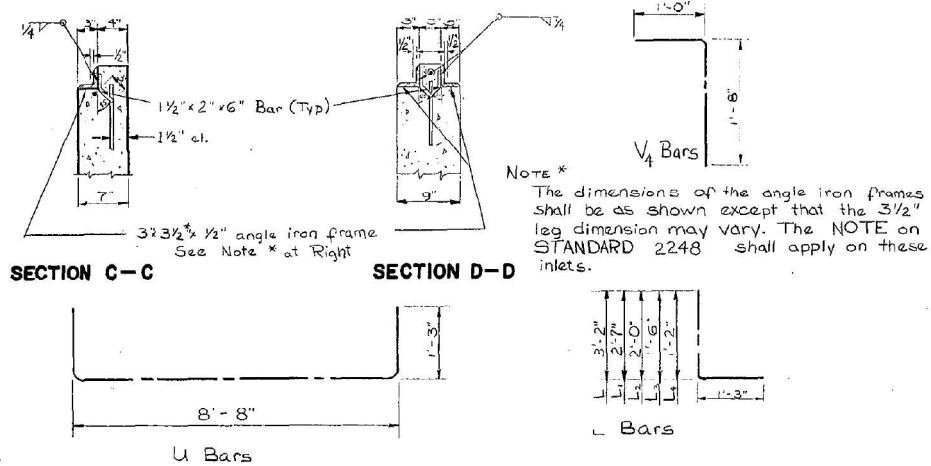
F.A.P. RTE.	SECTION	COUNTY	TOTAL SHEETS	SHEET NO.
587	(22)RS-7	BUREAU	29	21
CONTRACT NO. 66M31				
ILLINOIS FED. AID PROJECT				

INLET BOX SPECIAL NO. 4
LT. & RT. STA. 1011+16

ROUTE NO.	SECTION	COUNTY	TOTAL SHEETS	SHEET NO.
FA 587	22	BUREAU & WARS LA SALLE	26	18
FED. ROAD DIST. NO. 7 ILLINOIS PROJECT				

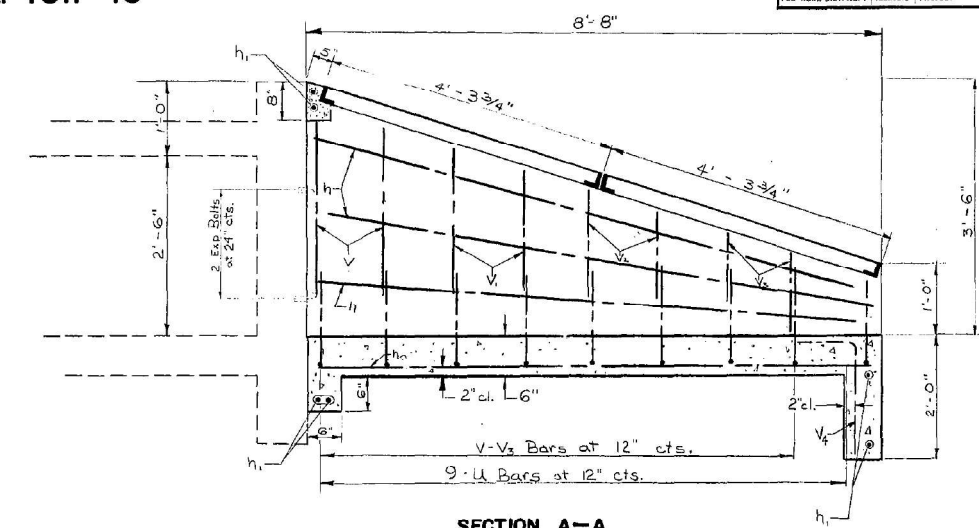


PLAN

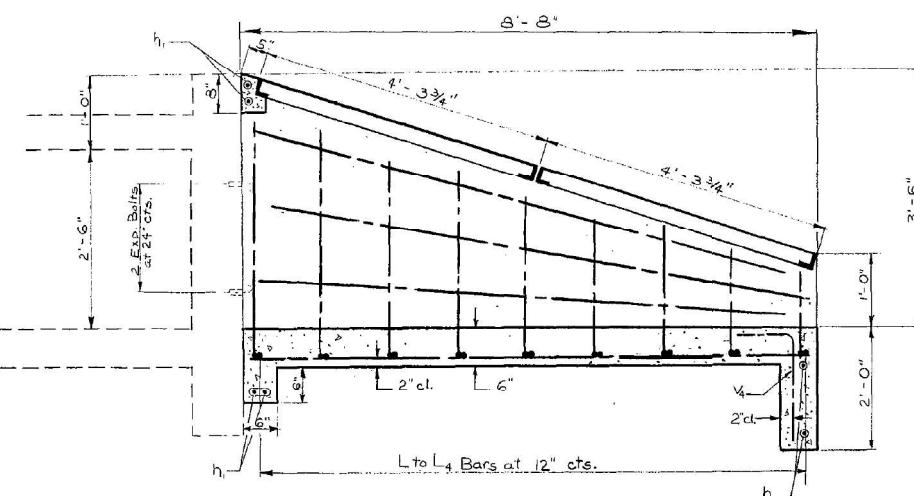


BILL OF MATERIALS (One Inlet)

Bar	No.	Size	Shape	Length
h	18	# 4	-	8'-2"
h ₁	6	# 4	-	8'-5"
L ₁	2	# 4	L	4'-5"
L ₂	2	# 4	L	3'-10"
L ₃	2	# 4	L	3'-3"
L ₄	2	# 4	L	2'-9"
L ₅	1	# 4	L	2'-5"
U	9	# 4	U	9'-11"
V	4	# 4	-	3'-2"
V ₁	4	# 4	-	2'-7"
V ₂	4	# 4	-	2'-0"
V ₃	4	# 4	-	1'-6"
V ₄	9	# 4	-	2'-8"
Ct. X Conc.	Cu. Yd.	3.3		
Reinr. Bars	Lbs.	200		
Grating	Sq. Ft.	63.5		
Exp. Bolts	Each	8		



SECTION A-A



SECTION B-B

GENERAL NOTES

Class X concrete for headwalls shall be used throughout. The GENERAL NOTES and GRATING DETAILS on Standard 2248 shall apply on these inlets.
The contract unit price "EACH" for INLET BOX SPECIAL NO. 4 in place shall include the frames and grating, Class X concrete headwalls, reinforcement bars, and expansion bolts.

DISTRICT NO. 2 DIXON

DESIGNED _____ DATE _____
DRAWN _____ SCALE _____
CHECKED _____

FOR INFORMATION ONLY

MODEL: Default
FILE: main_e_pws\pws\subject-pw-beadefy.com\FW\DOT\Documents\DOT Office\Drawings\Project\10366643\10366643-1-24r-details.dgn

USER NAME = Cassandra.Nolasco	DESIGNED -	REVISED -
PLOT SCALE = 100,0000' / in.	DRAWN -	REVISED -
PLOT DATE = 8/23/2022	CHECKED -	REVISED -
	DATE -	REVISED -

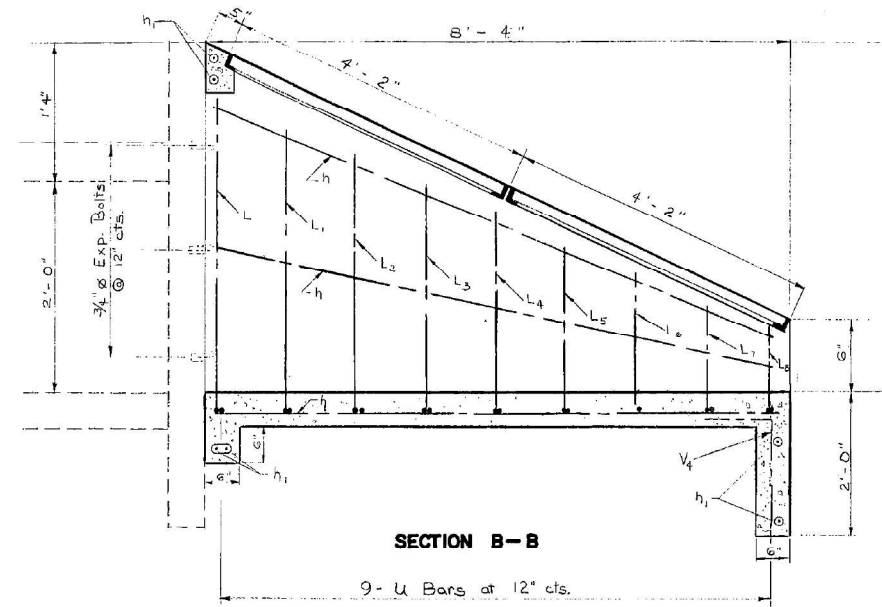
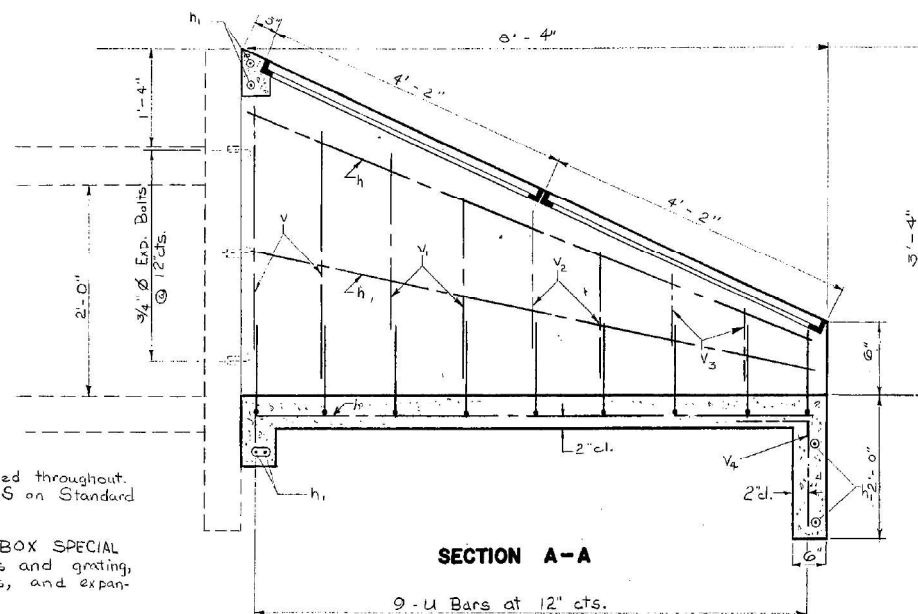
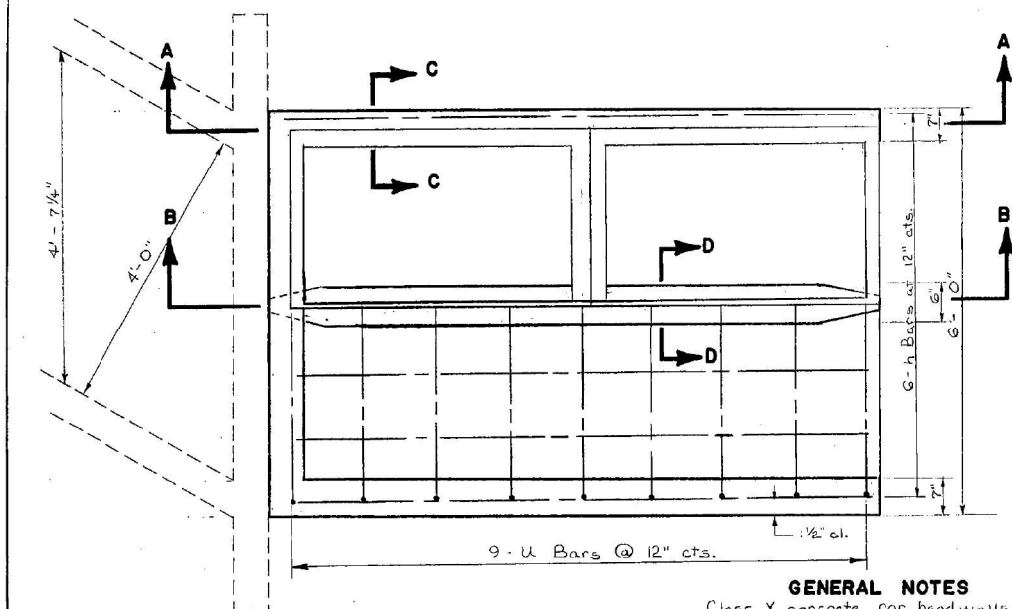
STATE OF ILLINOIS
DEPARTMENT OF TRANSPORTATION

GRATE DETAILS 1011+16 SN 006-2593			
SCALE:	SHEET	OF SHEETS	STA. TO STA.

F.A.P. RTE.	SECTION	COUNTY	TOTAL SHEETS	SHEET NO.
587	(22)RS-7	BUREAU	29	23
CONTRACT NO. 66M31				
ILLINOIS FED. AID PROJECT				

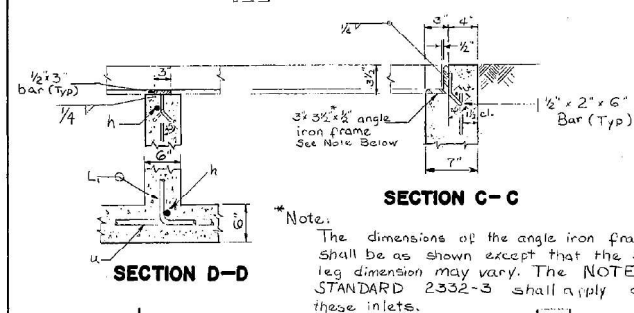
**INLET BOX SPECIAL NO. 2
LT. & RT. STA. 1060+19**

ROUTE NO. SECTION COUNTY SHEET NO. TOTAL SHEETS
 FA 587 22 BUREAU 8 26 16
 WARRS LA SALLE
 FED. ROAD DIST. NO. 7, ILLINOIS PROJECT



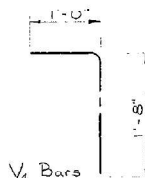
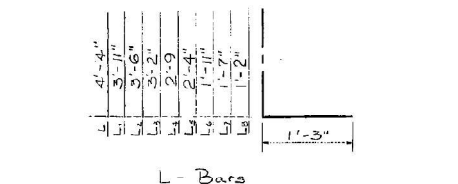
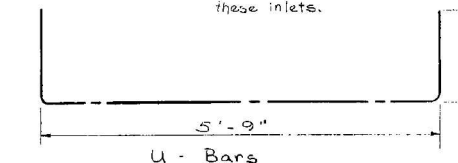
GENERAL NOTES
 Class X concrete for headwalls shall be used throughout. The GENERAL NOTES and GRATING DETAILS on Standard 2332 shall apply on these inlets.

The contract unit price "EACH" for INLET BOX SPECIAL NO. 2 in place shall include the frames and grating, Class X concrete headwalls, reinforcement bars, and expansion bolts.



SECTION D-D

SECTION C-C



BILL OF MATERIALS (One Inlet)

Bar	No.	Size	Shape	Length
h	15	#4	—	8'-0"
h	6	#4	—	5'-6"
L	1	#4	L	4'-7"
L ₁	1	#4	L	4'-2"
L ₂	1	#4	L	3'-9"
L ₃	1	#4	L	3'-5"
L ₄	1	#4	L	3'-0"
L ₅	1	#4	L	2'-7"
L ₆	1	#4	L	2'-2"
L ₇	1	#4	L	1'-10"
L ₈	1	#4	L	1'-5"
u	9	#4	L	7'-3"
v	4	#4	—	3'-6"
v ₁	4	#4	—	2'-8"
v ₂	4	#4	—	1'-10"
v ₃	2	#4	—	1'-10"
v ₄	6	#4	—	2'-8"
Cl. X Conc.		Cu. Yd.		
Reinf. bars		Ibs.		
Grating		Sq. Ft.		
Exp. Bolts		Each	9	

DISTRICT NO. 2 DIXON

DESIGNED
 DRAWN
 CHECKED
 DATE
 SCALE

FOR INFORMATION ONLY

MODEL: Default
 FILE: h:\m\p\p\project-cw-beadefy.com\PIV\DOT\Documents\DOT Office\Drawings\Project\1060+19\ch-details.dgn

USER NAME = Cassandra.Nolasco	DESIGNED -	REVISED -
	DRAWN -	REVISED -
PLOT SCALE = 100,0000' / in.	CHECKED -	REVISED -
PLOT DATE = 8/23/2022	DATE -	REVISED -

**STATE OF ILLINOIS
 DEPARTMENT OF TRANSPORTATION**

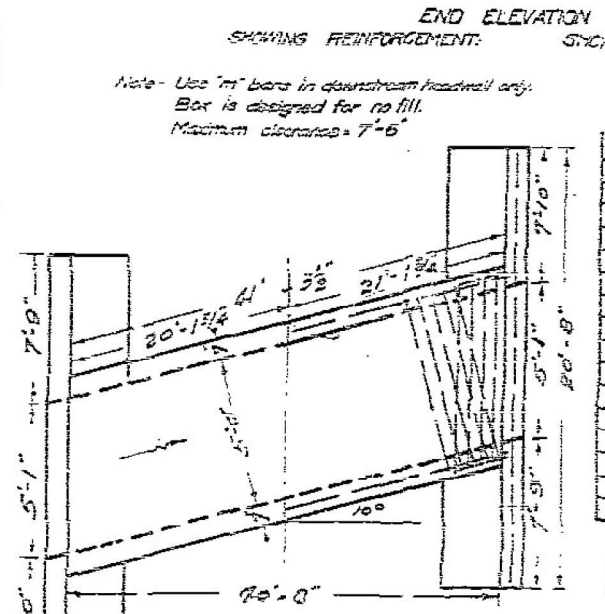
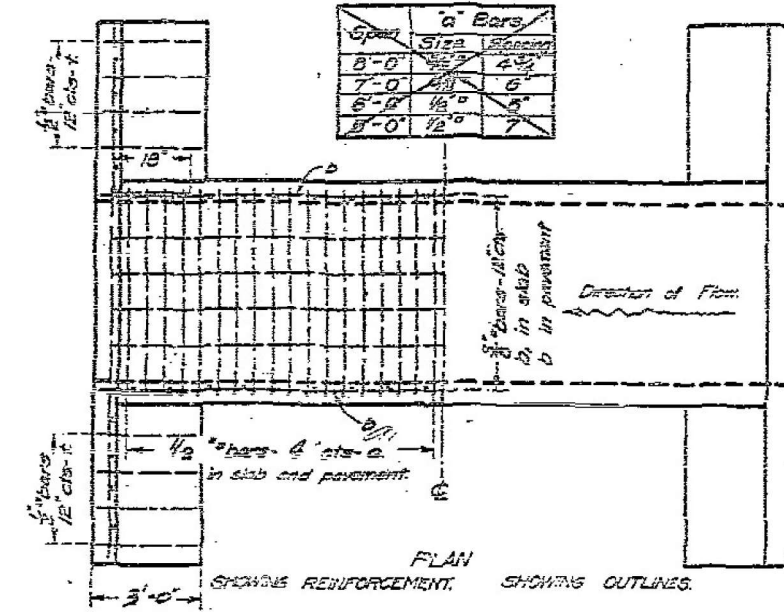
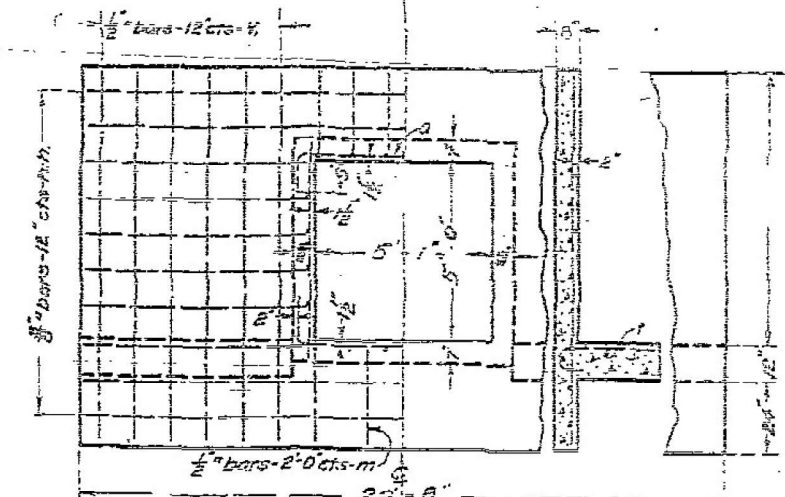
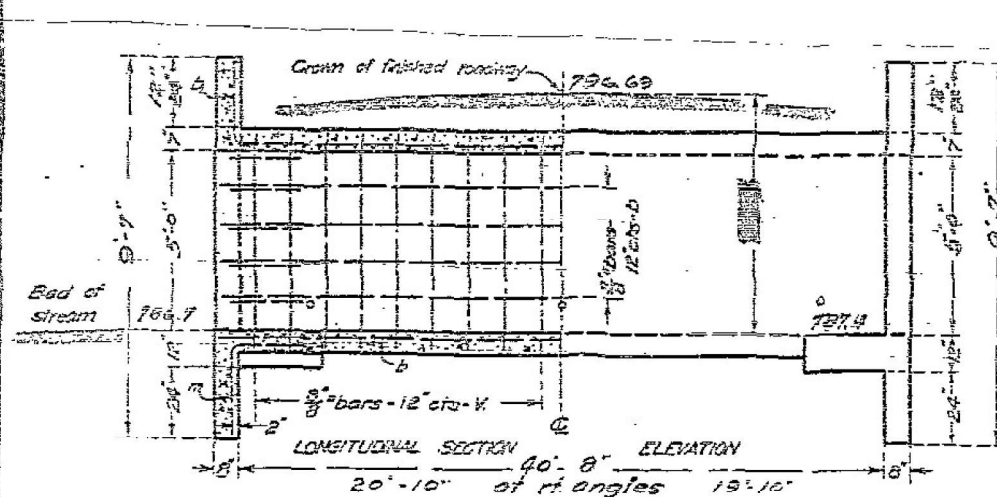
GRATE DETAILS 1060+19 SN #1946

SCALE: SHEET OF SHEETS STA. TO STA.

F.A.P. RTE.	SECTION	COUNTY	TOTAL SHEETS	SHEET NO.
587	(22)RS-7	BUREAU	29	24
			CONTRACT NO. 66M31	
ILLINOIS FED. AID PROJECT				

STATE OF ILLINOIS
STATE HIGHWAY DEPARTMENT
REINFORCED CONCRETE BOX CULVERT

ROAD ISSUE ROUTE NO.	COUNTY	SEC.	TOTAL SHEETS	SHEET NO.
18	BUREAU LaSALLE	22	35	30



BILL OF MATERIAL

Bars	No.	Size	Length
V	20	3/8"	6'-0"
W	20	3/8"	3'-0"
h	8	3/8"	20'-0"
h	24	3/8"	9'-0"
h	24	3/8"	7'-6"
h	24	3/8"	7'-0"
h	30	3/8"	22'-0"
h	10	3/8"	22'-0"
f	22	1/2"	3'-6"
m	6	1/2"	5'-0"
Steel - Lbs.		2925	
Concrete - Cu Yds		31.0	

STARTED: [Signature]
DESIGNED: [Signature]
DRAWN: [Signature]
CHECKED: [Signature]
APPROVED: [Signature]
STATE HIGHWAY ENGINEER

Checked [Signature]
Passed [Signature]
ENG. OF DESIGN

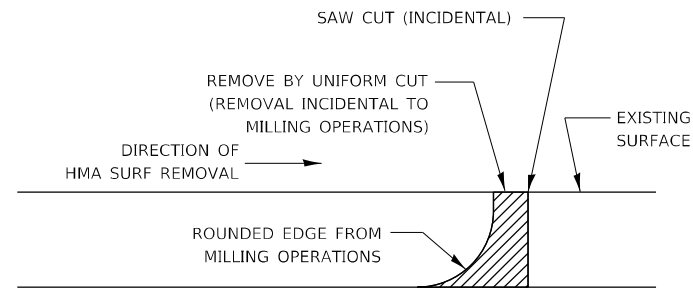
Use 7/8" concrete to be used thru head
Provisions 1.24-4

STA 1105+85
S.B.I. ROUTE 18-SECT 22
BUREAU COUNTY
613

FOR INFORMATION ONLY

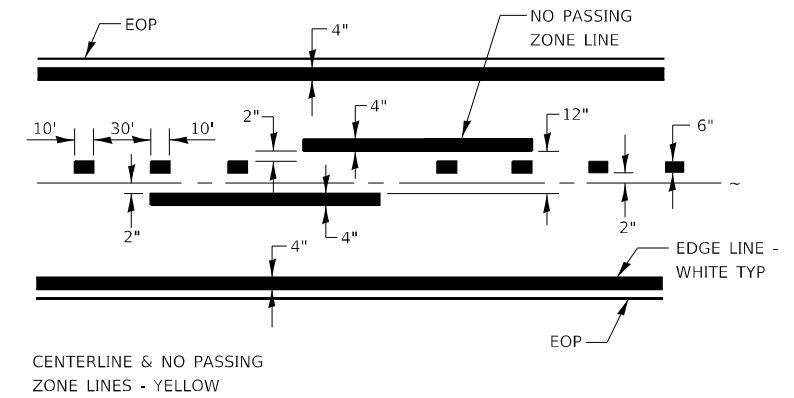
MODEL: Default
FILE NAME: p:\ultra-cw-bentley.com\FWIDOT\Documents\DOT Office\District 21\Project\1036643\10366431-21r-detailed.dgn

USER NAME = Cassandra.Nolasco	DESIGNED -	REVISED -	STATE OF ILLINOIS DEPARTMENT OF TRANSPORTATION	ORIGINAL CULVERT DETAILS FOR HEADWALL INFORMATION				F.A.P. RTE.	SECTION	COUNTY	TOTAL SHEETS	SHEET NO.
PLOT SCALE = 100,0000' / in.	DRAWN -	REVISED -		1105+85 SN #1943	587	(22)RS-7	BUREAU	29	25			
PLOT DATE = 8/23/2022	CHECKED -	REVISED -		SCALE:	SHEET	OF	SHEETS	STA.	TO	STA.	CONTRACT NO. 66M31	
	DATE -	REVISED -									ILLINOIS FED. AID PROJECT	

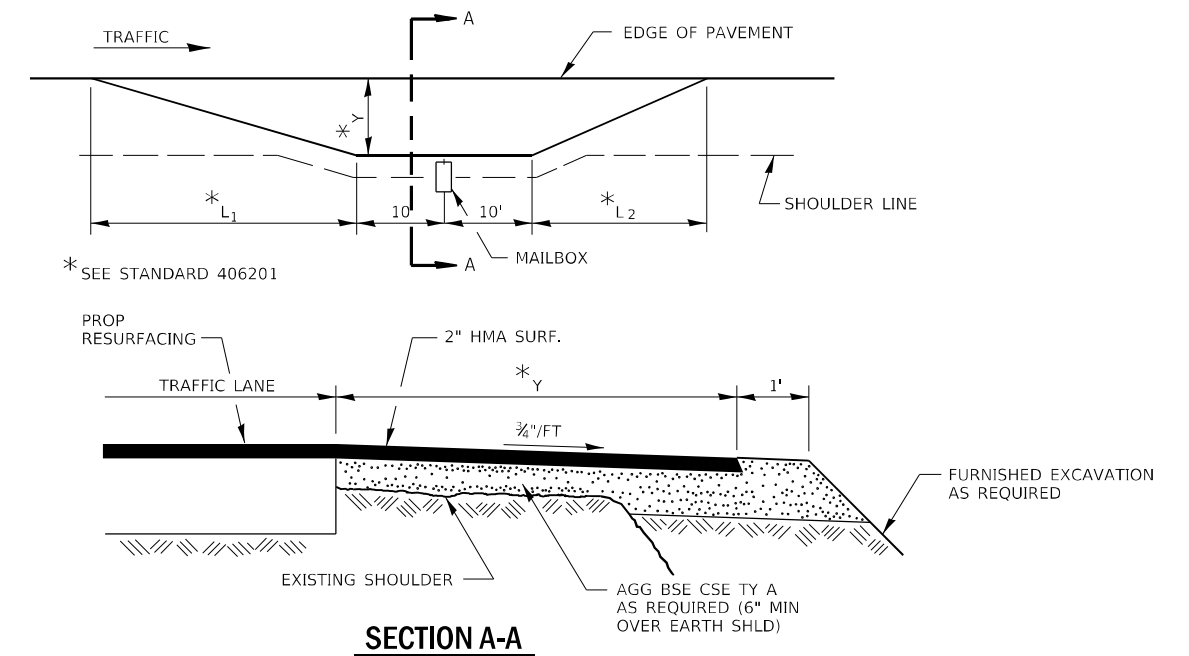


WHEN MILLING OPERATIONS PRODUCE A ROUNDED EDGE, THEN A SAW CUT SHALL BE USED TO MANUFACTURE A PERPENDICULAR EDGE AS SHOWN IN THE DETAIL. THE ENGINEER SHALL BE THE SOLE JUDGE CONCERNING THE USE OF THIS DETAIL.

HMA DETAIL AT BUTT JOINTS



PAVEMENT MARKING



RURAL MAILBOX TURNOUT DETAILS

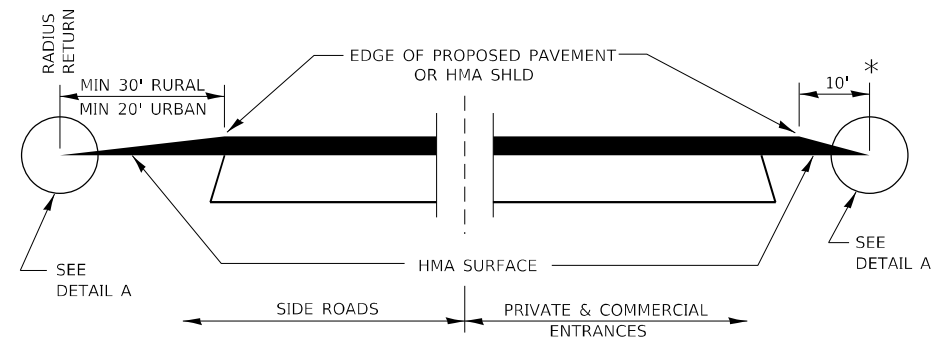
MODEL: Default
FILE: Mailbox.pia
Subject: pw_bentley.com/PW/IDOT/Documents/IDOT_offices/Dir/rdt_3/Project/ID366M31/CADD/Draw/ID366M31-1-2b-1-detailed.dgn

USER NAME = Cassandra.Nolasco	DESIGNED -	REVISED -
PLOT SCALE = 100,0000' / in.	DRAWN -	REVISED -
PLOT DATE = 8/25/2022	CHECKED -	REVISED -
	DATE -	REVISED -

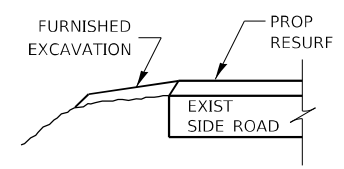
**STATE OF ILLINOIS
DEPARTMENT OF TRANSPORTATION**

DETAILS				
SCALE:	SHEET	OF	SHEETS	STA. TO STA.

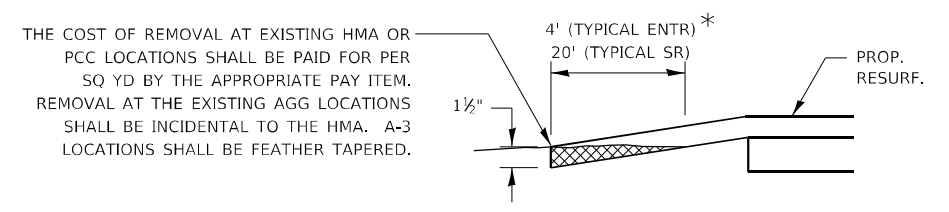
F.A.P. RTE.	SECTION	COUNTY	TOTAL SHEETS	SHEET NO.
587	(22)RS-7	BUREAU	29	26
CONTRACT NO. 66M31				
ILLINOIS FED. AID PROJECT				



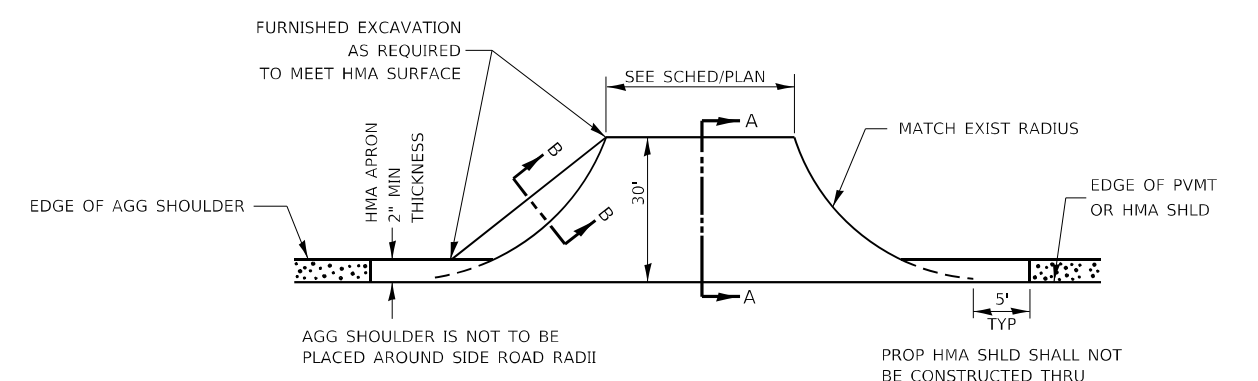
SECTION A-A
DETAILS AT ENTRANCES & SIDE ROADS



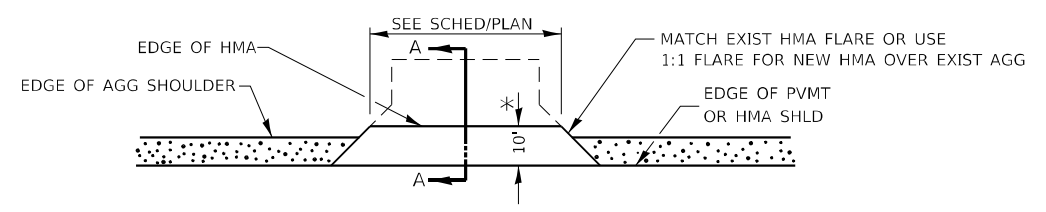
SECTION B-B



DETAIL A



PLAN AT SIDE ROADS



PLAN AT PRIVATE & COMMERCIAL ENTRANCES

(DO NOT RESURFACE FIELD ENTRANCES)

* PROPOSED HMA RESURFACING AT PUBLIC EDUCATIONAL FACILITY ENTRANCES SHALL BE EXTENDED TO THE RIGHT-OF-WAY LIMITS.

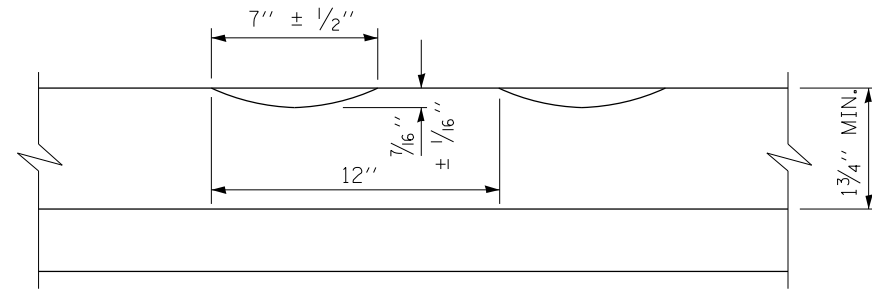
MODEL: Default
 FILE NAME: p:\project\66m31\cadd\dwg\66m31\cadd\detail.dgn
 PROJECT: 66M31\DOT Office\Detail.dwg
 USER: cassandra.nolasco

USER NAME = Cassandra.Nolasco	DESIGNED -	REVISED -
PLOT SCALE = 100,0000' / in.	DRAWN -	REVISED -
PLOT DATE = 8/23/2022	CHECKED -	REVISED -
	DATE -	REVISED -

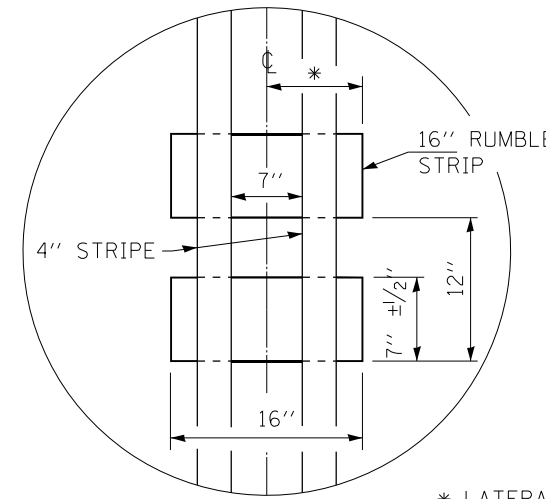
STATE OF ILLINOIS
DEPARTMENT OF TRANSPORTATION

DETAILS	
SCALE:	SHEET OF SHEETS STA. TO STA.

F.A.P. RTE.	SECTION	COUNTY	TOTAL SHEETS	SHEET NO.
587	(22)RS-7	BUREAU	29	27
CONTRACT NO. 66M31				
ILLINOIS FED. AID PROJECT				

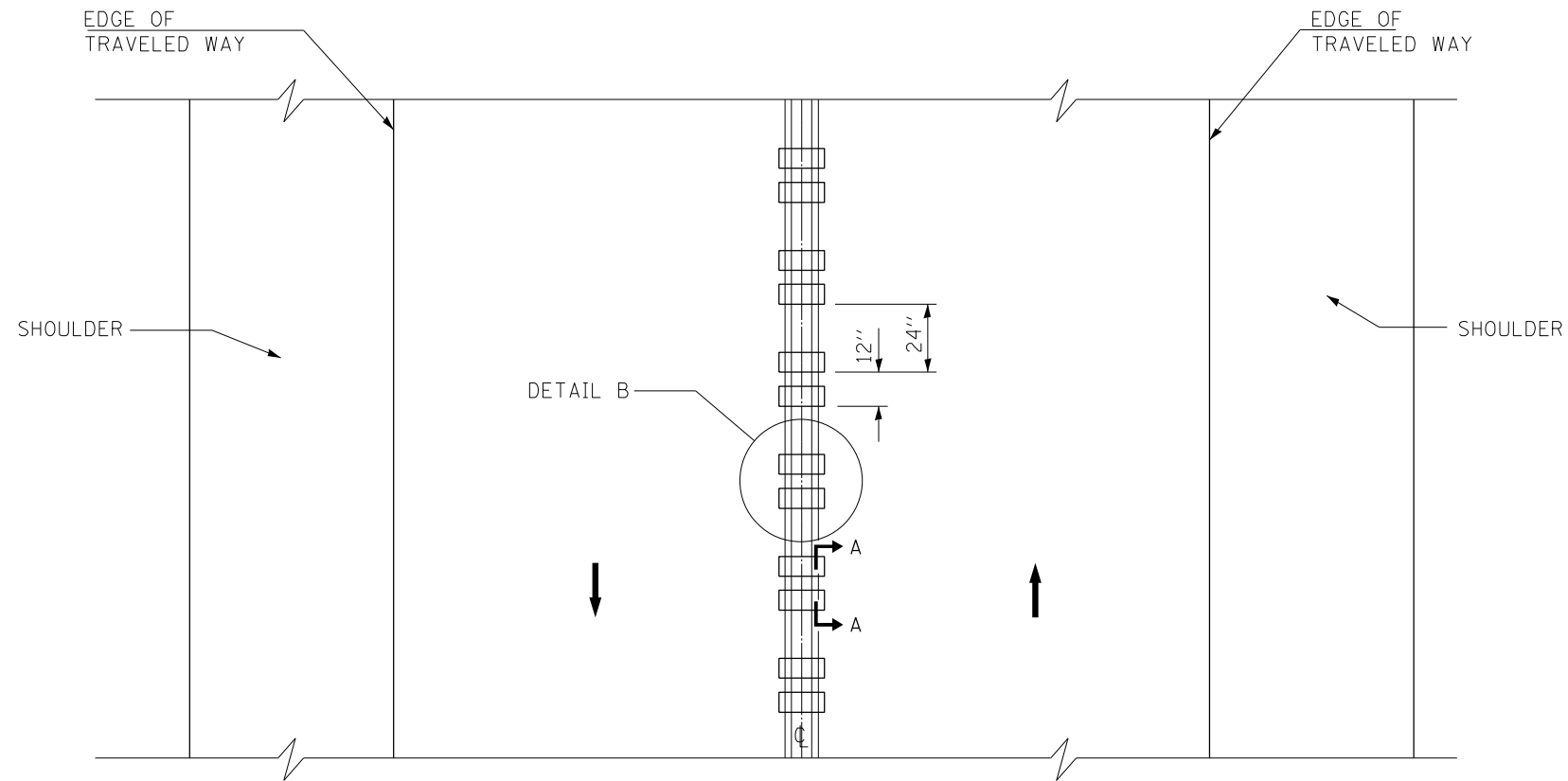


SECTION A-A



DETAIL B

* LATERAL DEVIATION SHALL NOT EXCEED ONE INCH IN 100 FEET.



TWO-WAY ROAD

GENERAL NOTES

SEE STANDARD 780001 FOR STRIPING.

RUMBLE STRIPS SHALL NOT BE PLACED ON BRIDGES.

ALL RUMBLE STRIPS SHALL BE MILLED.

CENTERLINE RUMBLE STRIPS SHALL BE CONTINUOUS THROUGH CONNECTIONS OF SIDEROADS WITH NO LEFT TURN LANES.

DISCONTINUE CENTERLINE RUMBLE STRIPS THROUGH THE LIMITS OF ALL LEFT TURN LANES, INCLUDING ANY LANE TAPER SECTIONS.

WHERE USED, ADJUST SPACING OF RAISED REFLECTIVE PAVEMENT MARKERS TO FALL IN WIDER GAP BETWEEN RUMBLE STRIPS.

CENTERLINE RUMBLE STRIPS SHALL BE PLACED IN NO PASSING ZONES ONLY.

RUMBLE STRIPS
CENTERLINE

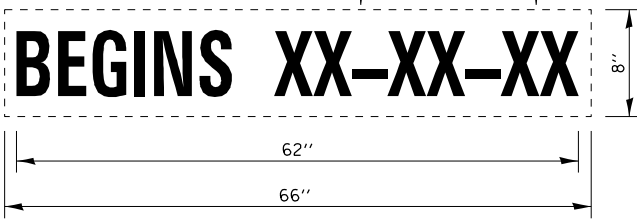
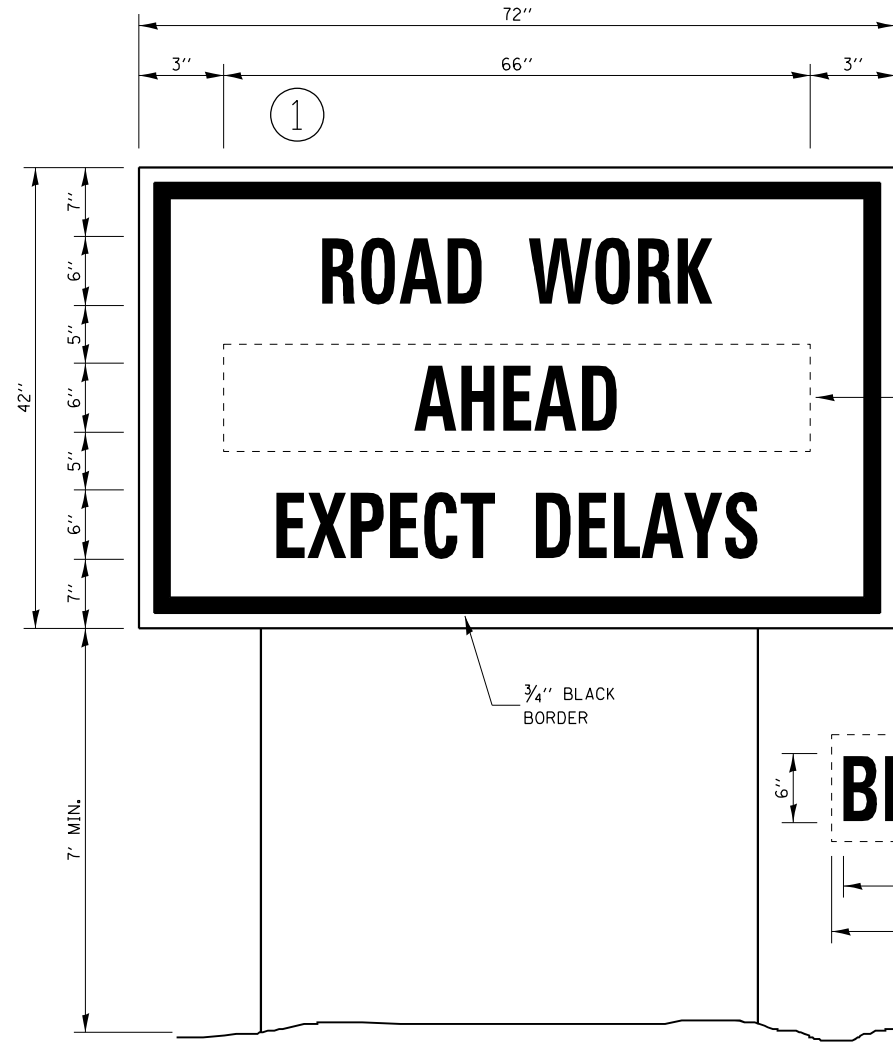
MODEL: Default
 FILE: h:\m\c... \public\paw_bentley.com\PIV\DOT\Documents\DOT Office\Dir\rdet_3\Project\10366643\10366643-1-2-24-detail.c.dgn

USER NAME = Cassandra.Nolasco	DESIGNED -	REVISED -
PLOT SCALE = 100,0000' / in.	DRAWN -	REVISED -
PLOT DATE = 8/25/2022	CHECKED -	REVISED -
	DATE -	REVISED -

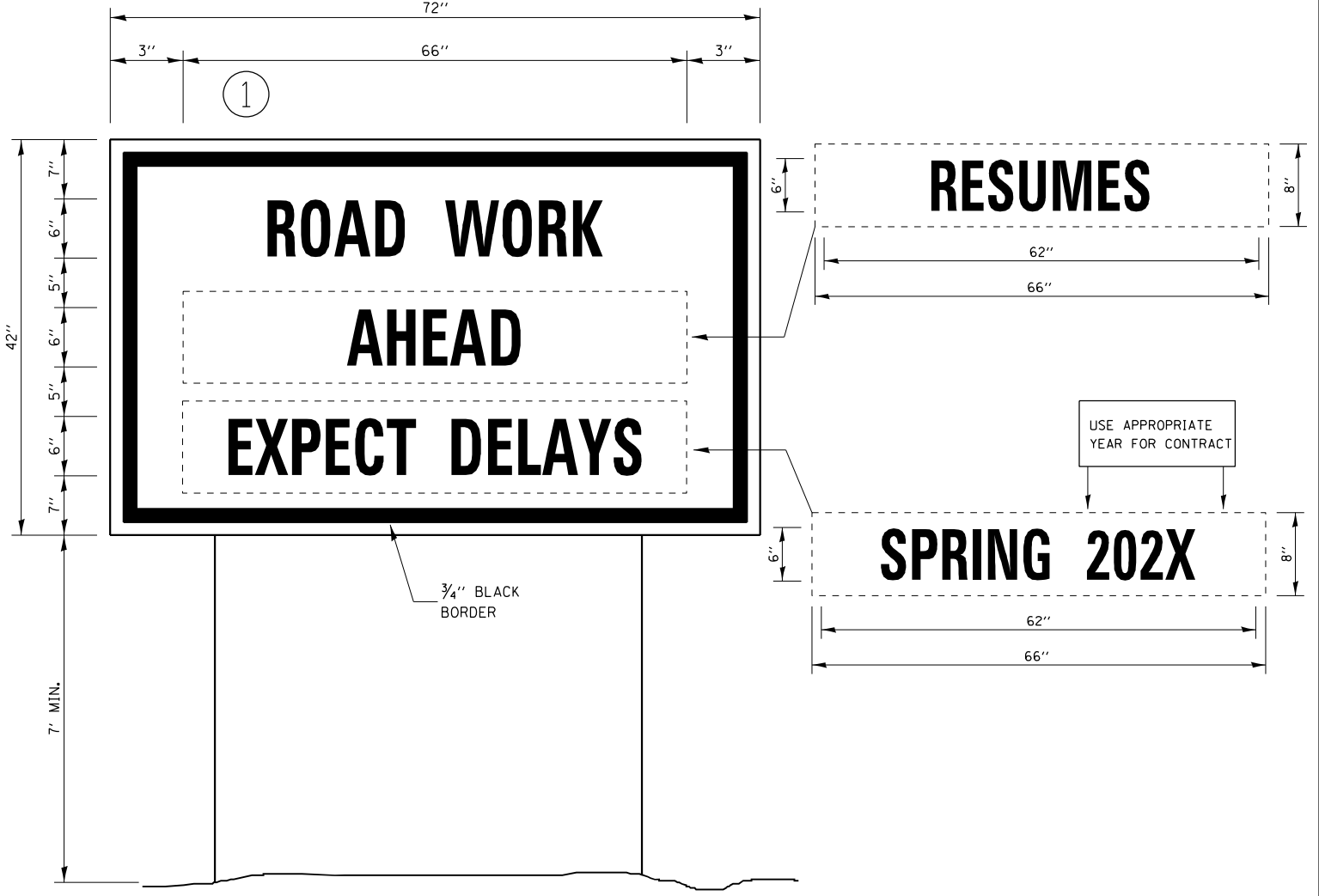
STATE OF ILLINOIS
DEPARTMENT OF TRANSPORTATION

DETAILS			
SCALE:	SHEET	OF	SHEETS
	STA.	TO	STA.

F.A.P. RTE.	SECTION	COUNTY	TOTAL SHEETS	SHEET NO.
587	(22)RS-7	BUREAU	29	28
CONTRACT NO. 66M31			ILLINOIS FED. AID PROJECT	



TEMPORARY INFORMATION SIGNING



WINTER SHUT DOWN SIGNING

NOTES:

1. USE 6" D BLACK LETTERING ON FLOURESENT ORANGE BACKGROUND.
2. ERECT SIGNS AT LOCATIONS IN ADVANCE OF THE "ROAD CONSTRUCTION AHEAD" SIGNS AS DIRECTED BY THE ENGINEER.
3. ERECT SIGN ① WITH INSTALLED PANEL ② A MINIMUM OF ONE WEEK PRIOR TO THE START OF THE LANE CLOSURE.
4. REMOVE PANEL ② ON THAT DATE.
5. SEE SPECIAL PROVISION "TEMPORARY INFORMATION SIGNING" FOR ADDITIONAL INFORMATION.
6. WILL BE PAID FOR PER SO FT AS "TEMPORARY INFORMATION SIGNING". EACH SIGN = 21 SQ FT AND THE DATE PANEL ② WILL NOT BE MEASURED SEPARATELY FOR PAYMENT.

MODEL: Default FILE NAME: p:\p\dot\aw\beadef\com\p\dot\Documents\DOT Office\Dir\dir_3\Project\10366643\10366643-1-2ht-details.dgn

USER NAME = Cassandra.Nolasco	DESIGNED -	REVISED -
PLOT SCALE = 100,0000' / in.	DRAWN -	REVISED -
PLOT DATE = 8/23/2022	CHECKED -	REVISED -
	DATE -	REVISED -

**STATE OF ILLINOIS
DEPARTMENT OF TRANSPORTATION**

DETAILS			
SCALE:	SHEET	OF	SHEETS
	STA.		TO STA.

F.A.P. RTE.	SECTION	COUNTY	TOTAL SHEETS	SHEET NO.
587	(22)RS-7	BUREAU	29	29
CONTRACT NO. 66M31				
ILLINOIS FED. AID PROJECT				