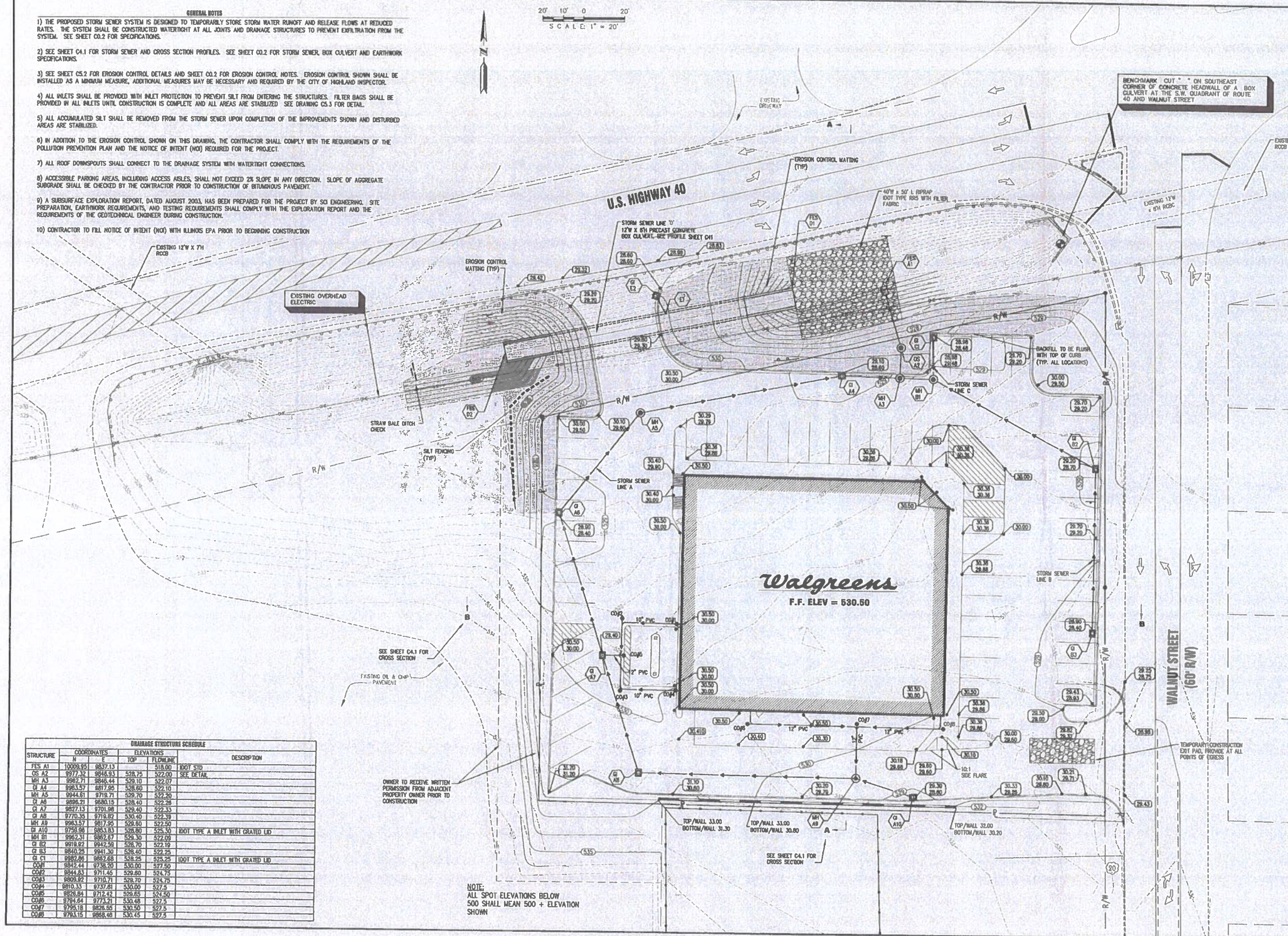


- GENERAL NOTES**
- 1) THE PROPOSED STORM SEWER SYSTEM IS DESIGNED TO TEMPORARILY STORE STORM WATER RUNOFF AND RELEASE FLOWS AT REDUCED RATES. THE SYSTEM SHALL BE CONSTRUCTED WATER-TIGHT AT ALL JOINTS AND DRAINAGE STRUCTURES TO PREVENT EXFILTRATION FROM THE SYSTEM. SEE SHEET C0.2 FOR SPECIFICATIONS.
 - 2) SEE SHEET C4.1 FOR STORM SEWER AND CROSS SECTION PROFILES. SEE SHEET C0.2 FOR STORM SEWER, BOX CULVERT AND EARTHWORK SPECIFICATIONS.
 - 3) SEE SHEET C5.2 FOR EROSION CONTROL DETAILS AND SHEET C0.2 FOR EROSION CONTROL NOTES. EROSION CONTROL SHOWN SHALL BE INSTALLED AS A MINIMUM MEASURE, ADDITIONAL MEASURES MAY BE NECESSARY AND REQUIRED BY THE CITY OF HIGHLAND INSPECTOR.
 - 4) ALL INLETS SHALL BE PROVIDED WITH INLET PROTECTION TO PREVENT SILT FROM ENTERING THE STRUCTURES. FILTER BAGS SHALL BE PROVIDED IN ALL INLETS UNTIL CONSTRUCTION IS COMPLETE AND ALL AREAS ARE STABILIZED. SEE DRAINING C5.3 FOR DETAIL.
 - 5) ALL ACCUMULATED SILT SHALL BE REMOVED FROM THE STORM SEWER UPON COMPLETION OF THE IMPROVEMENTS SHOWN AND DISTURBED AREAS ARE STABILIZED.
 - 6) IN ADDITION TO THE EROSION CONTROL SHOWN ON THIS DRAWING, THE CONTRACTOR SHALL COMPLY WITH THE REQUIREMENTS OF THE POLLUTION PREVENTION PLAN AND THE NOTICE OF INTENT (NOI) REQUIRED FOR THE PROJECT.
 - 7) ALL ROOF DOWNSPOUTS SHALL CONNECT TO THE DRAINAGE SYSTEM WITH WATER-TIGHT CONNECTIONS.
 - 8) ACCESSIBLE PARKING AREAS, INCLUDING ACCESS AISLES, SHALL NOT EXCEED 2% SLOPE IN ANY DIRECTION. SLOPE OF AGGREGATE SUBGRADE SHALL BE CHECKED BY THE CONTRACTOR PRIOR TO CONSTRUCTION OF BITUMINOUS PAVEMENT.
 - 9) A SUBSURFACE EXPLORATION REPORT, DATED AUGUST 2003, HAS BEEN PREPARED FOR THE PROJECT BY SES ENGINEERING. SITE PREPARATION, EARTHWORK REQUIREMENTS, AND TESTING REQUIREMENTS SHALL COMPLY WITH THE EXPLORATION REPORT AND THE REQUIREMENTS OF THE GEOTECHNICAL ENGINEER DURING CONSTRUCTION.
 - 10) CONTRACTOR TO FILE NOTICE OF INTENT (NOI) WITH ILLINOIS EPA PRIOR TO BEGINNING CONSTRUCTION.

20' 10' 0' 20'
SCALE: 1" = 20'



STRUCTURE	COORDINATES		ELEVATIONS		DESCRIPTION
	N	E	TOP	FLOORLINE	
FES A1	10009.95	9837.13	518.00		100' STD
OS A2	9977.32	9848.93	528.75	522.00	SEE DETAIL
MH A3	9997.71	9846.44	528.10	522.00	
CB A4	9983.57	9817.95	528.60	522.10	
MH A5	9944.81	9718.71	528.70	522.20	
CB A6	9898.21	9830.15	528.40	522.28	
CB A7	9857.13	9701.98	528.40	522.33	
CB A8	9770.35	9718.82	530.40	522.38	
MH A9	9963.57	9817.95	528.80	522.50	
CB A10	9758.98	9853.83	528.80	525.30	100' TYPE A INLET WITH GRATED LID
MH B1	9962.31	9882.87	528.30	522.09	
CB B2	9878.82	9842.58	528.70	522.19	
CB B3	9840.78	9841.30	528.40	522.25	
CB C1	9882.86	9852.88	528.25	525.25	100' TYPE A INLET WITH GRATED LID
COB1	9842.44	9738.20	530.00	527.50	
COB2	9844.83	9711.45	529.80	524.75	
COB3	9809.92	9710.71	528.70	524.78	
COB4	9810.33	9737.81	530.00	527.5	
COB5	9828.84	9712.42	528.85	524.50	
COB6	9784.64	9773.21	530.48	527.5	
COB7	9785.18	9826.85	530.50	527.5	
COB8	9783.15	9868.48	530.45	527.5	

NOTE:
ALL SPOT ELEVATIONS BELOW
500 SHALL MEAN 500 + ELEVATION
SHOWN



NO.	DATE	BY	REVISIONS	REMARKS
1				
2				
3				
4				
5				

University Associates, Inc. P.C.
 200 West Third St., Suite 100
 Highland, IL 62249
 Phone: (618) 938-1111
 Fax: (618) 938-1112
 Email: info@ua-inc.com

CLIENT/PROJECT:
 BLACKSTONE GROUP
 HIGHLAND WALGREENS

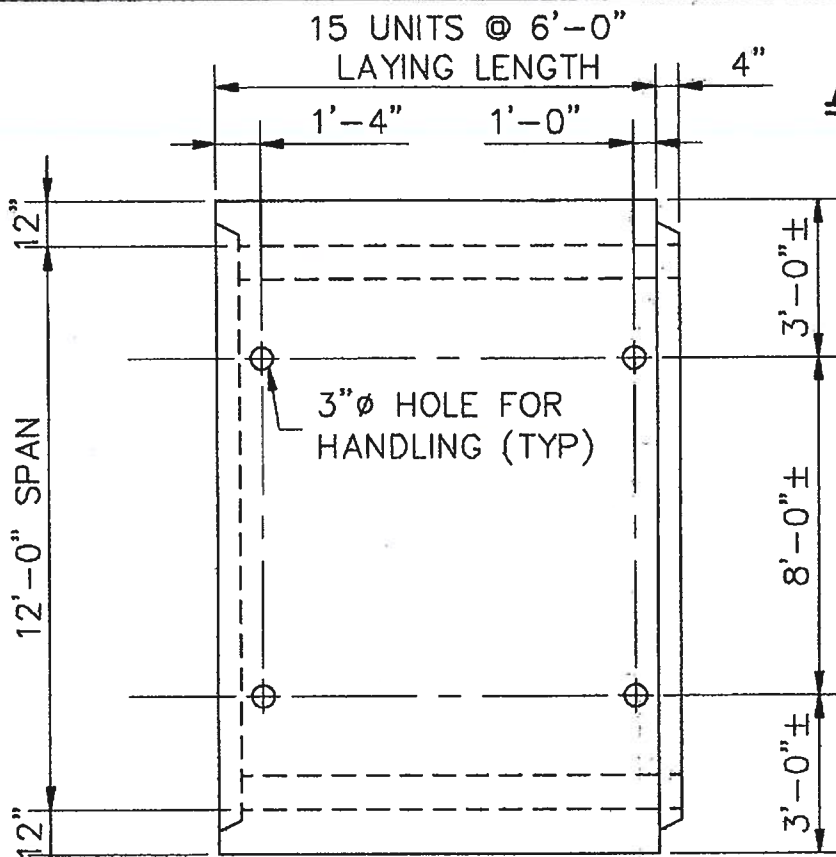
GRADING & DRAINAGE PLAN
WALGREENS
WALNUT STREET & US 40
HIGHLAND, ILLINOIS

DATE: 8/13/2003
 SCALE: 1" = 20'
 SHEET No.
C2.1
 OF 10 SHEETS

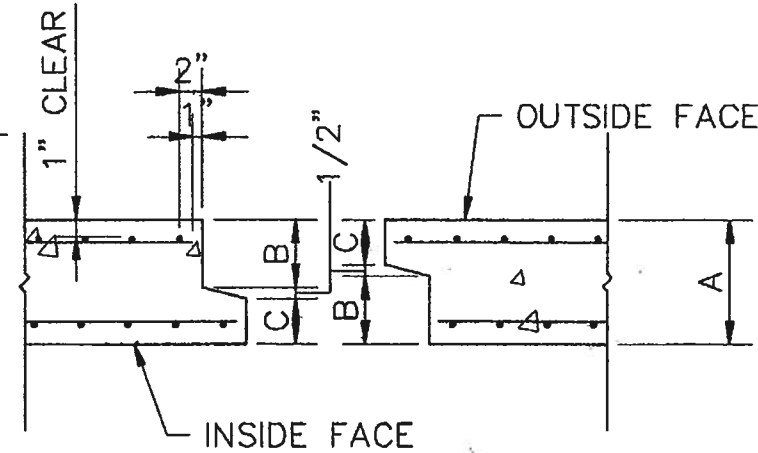
82778.7

Egyptian Concrete Co.

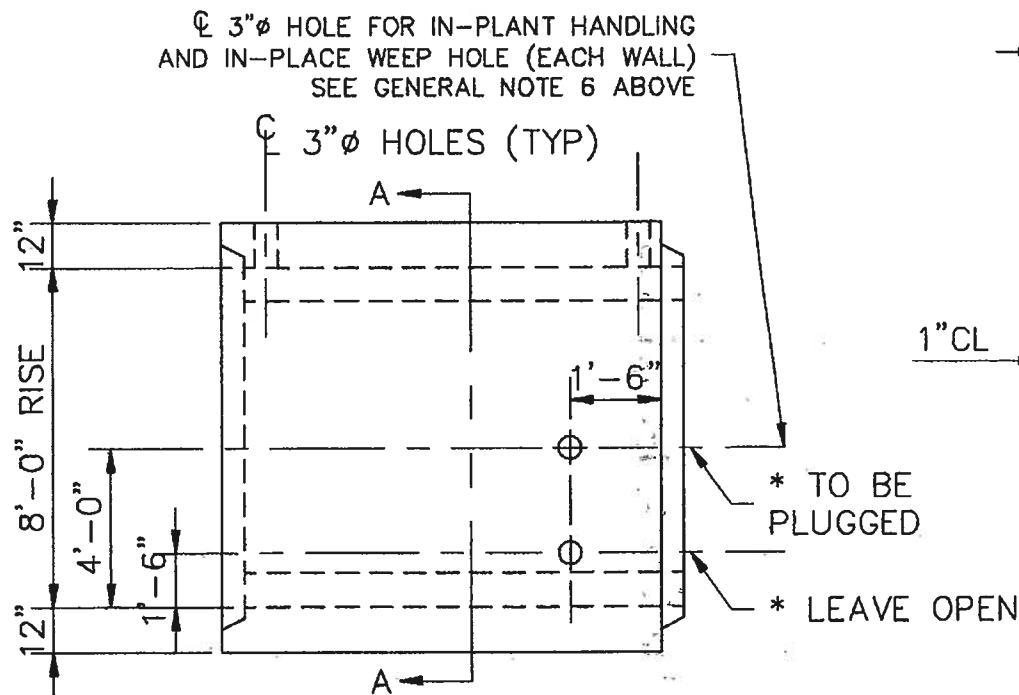
Salem, Illinois



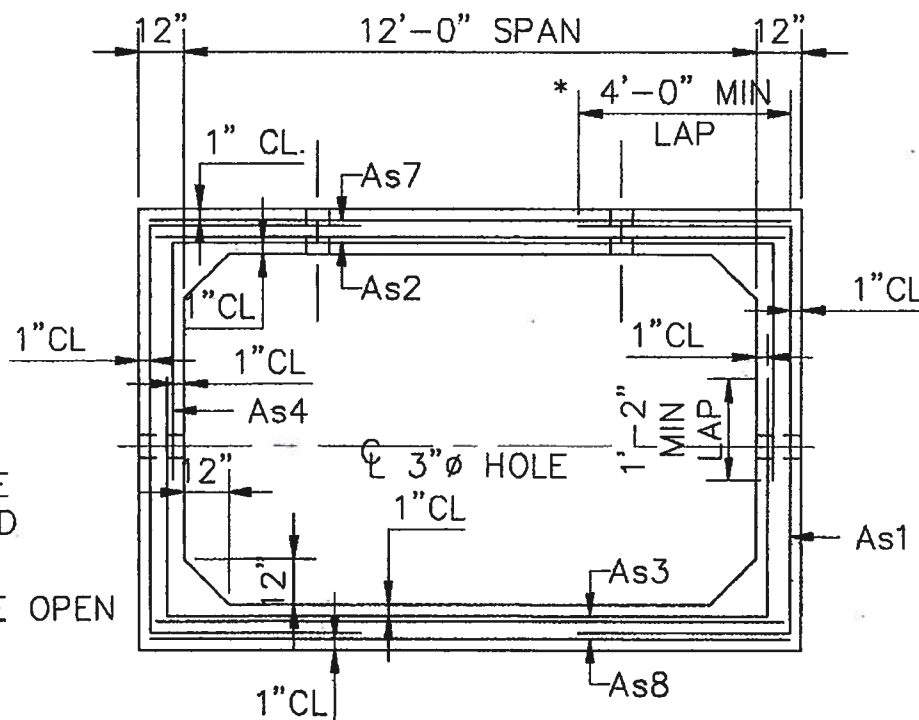
TOP VIEW



DIMENSION; INCHES	A	B	C
TOP SLAB	12"	6"	5 1/2"
BOTTOM SLAB	12"	6"	5 1/2"
WALLS	12"	6"	5 1/2"



SIDE ELEVATION



SECTION A-A

AASHTO HS 20 LOADING

GENERAL NOTES

1. Precast concrete box sections shall conform to the applicable requirements of article 540.06 of the standard specifications for precast reinforced concrete box culverts, ASTM designation C-789, and as further specified herein and in the details shown on this drawing.
2. Minimum concrete strength shall be 6000psi in 28 days.
3. Reinforcement shall be welded wire fabric conforming to ASTM A-185, additional longitudinal reinforcement may be deformed reinforcing bars conforming to ASTM A-615, grade 60.
4. The joints of the precast box sections shall be sealed with mastic in accordance with the "IDOT" standard specifications for road and bridge construction.
5. Lifting holes shall be filled with concrete plugs and mastic or mortar after the box sections are in place.
6. 3"Ø weep holes in walls to be (CHECK ONE)
 - left open.
 - plugged in field like lifting holes in top slab.

REINFORCING SCHEDULE (SEE NOTE BELOW)					
E.C.C. SHOP USE ONLY					
STEEL DES.	REQ'D AREA	FURN'D AREA	REINFORCEMENT DESCRIPTION	SHAPE	MAT LENGTH
* As1	0.35	0.36	2 x 6 - W6.0 x W2.5	<input type="checkbox"/>	2 @ 17'-10" MIN.
* As2	0.52	0.54	As4 + 2 x 6 - W4 x W2.5	<input type="checkbox"/>	1 @ 13'-6" MIN.
* As3	0.38	0.42	As4 + 2 x 6 - W2.0 x W2.0	<input type="checkbox"/>	1 @ 13'-6" MIN.
As4	0.29	0.30	2 x 6 - W5 x W2.0	<input type="checkbox"/>	2 @ 21'-6" MIN.
As7	0.29	0.30	2 x 6 - W5 x W2.0	<input type="checkbox"/>	1 @ 13'-10"
As8	0.29	0.30	2 x 6 - W5 x W2.0	<input type="checkbox"/>	1 @ 13'-10"

NO. PCS. REQ'D.	CONCRETE	WEIGHT
15 *	10.2 CY/PC	20.4 TONS/PC

*1 RUN(S) @ 15 PCS. PER RUN + 2 - 3PC. END SECTIONS

JOINT MASTIC REQ'D = 68± PAILS

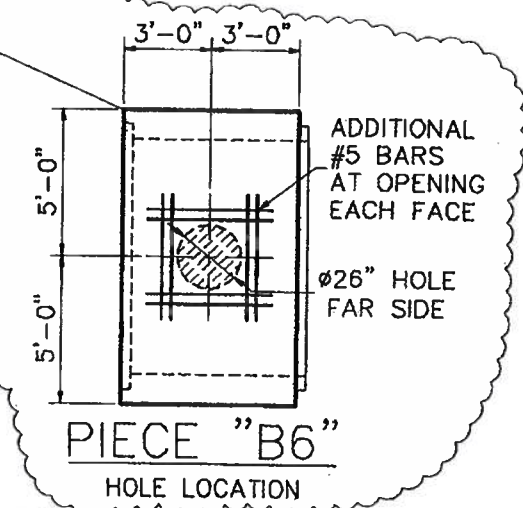
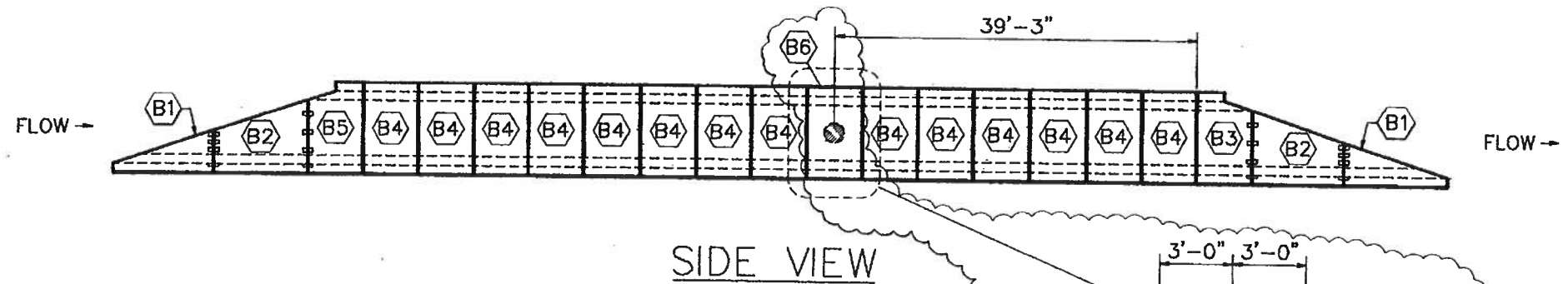
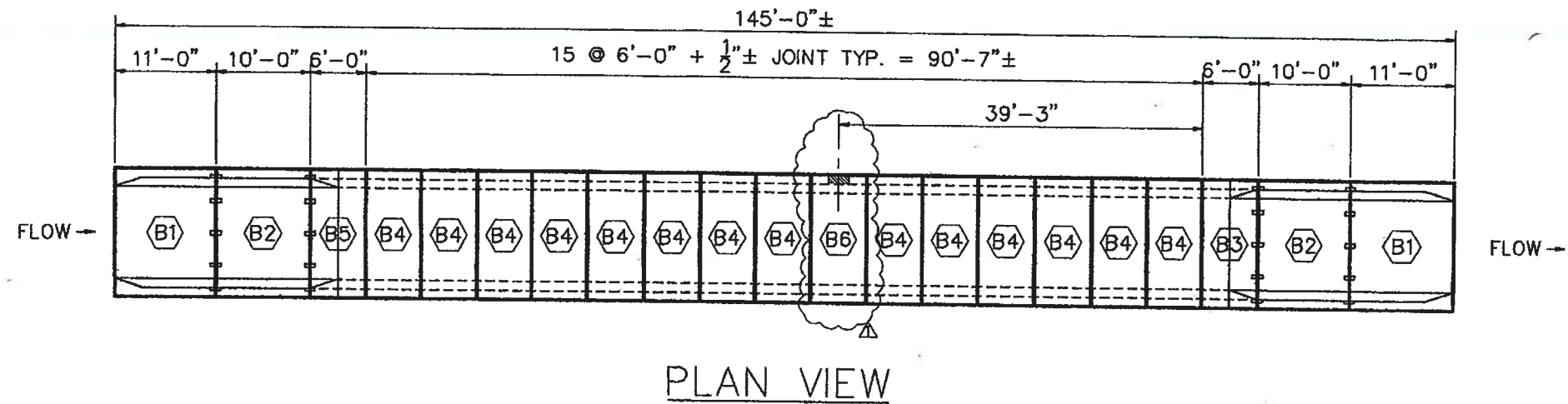
* REVISED: 8/26/04

PRECAST REINFORCED BOX CULVERT

12'-0" SPAN X 8'-0" RISE
ASTM C789 SPECIFICATIONS FILL HEIGHT 2.5'

DRAWINGS FOR:
 PROJECT: WALGREENS STORE
 CONTRACTOR: BEN F. BLANTON CONSTRUCTION CO.
 DATE: 7-29-04 BY: CJE E.C.C. W.O # 9513

8-27787



8-27787

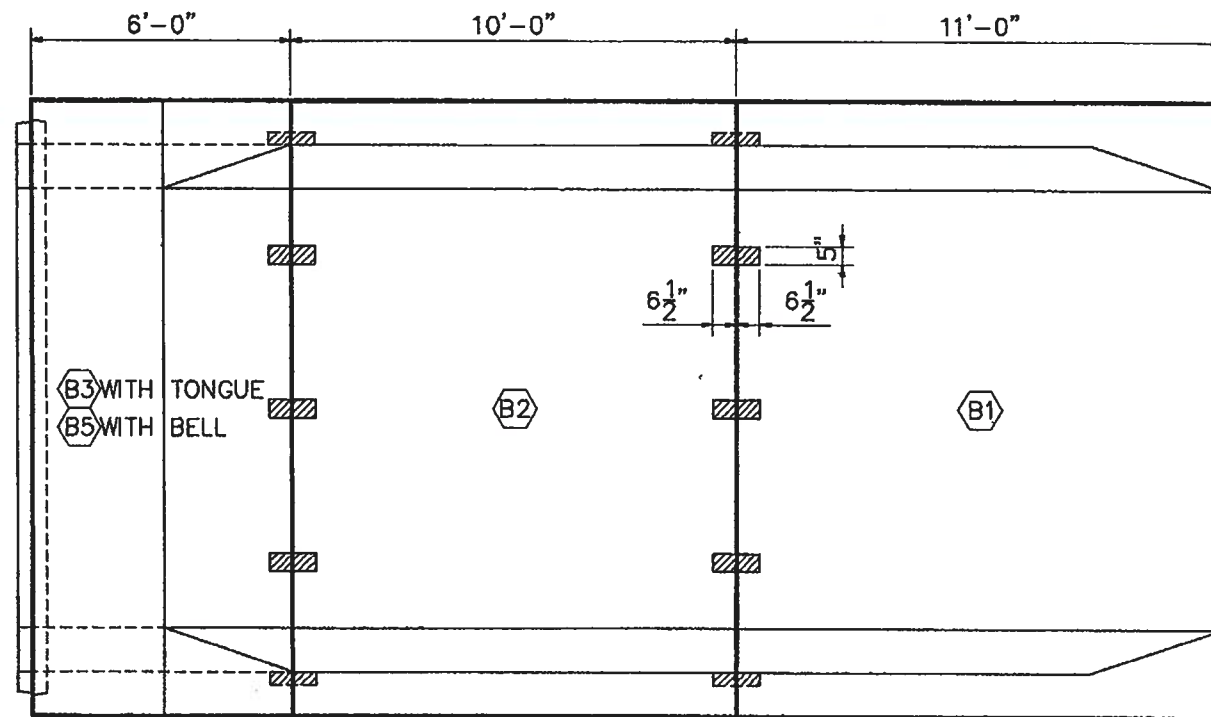
REVISIONS	
1	8/26/04
2	REVISED PER REVIEW: ADDED HOLE LOCATION
3	
4	
5	
6	
7	
8	
9	
10	

ISSUE DATE
7-29-04
DRAWN BY
B.W.
CHECKED BY
CLE

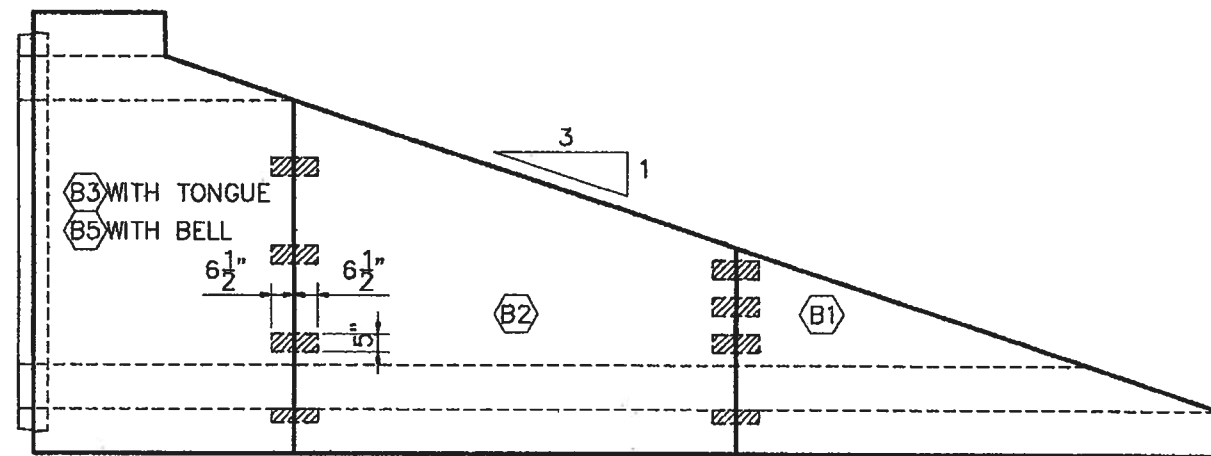
DRAWINGS FOR:
WALGREENS STORE
WALNUT ST. & US 40
HIGHLAND, ILLINOIS
BEN F. BLANTON CONSTRUCTION CO.
ST. PETERS, MISSOURI
PRECAST DRAWINGS

EGYPTIAN CONCRETE CO.
POST OFFICE BOX 488
SALEM, IL 62881
PHONE: (618) 548-1190
FAX: (618) 548-1294

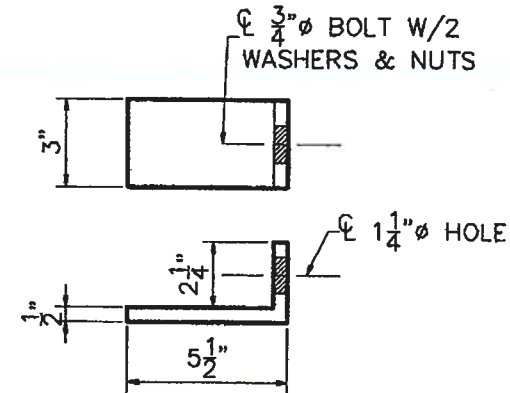
SHEET
2
OF 6



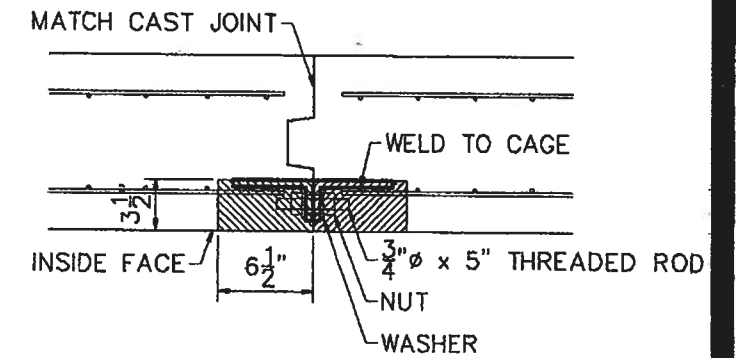
PLAN



ELEVATION

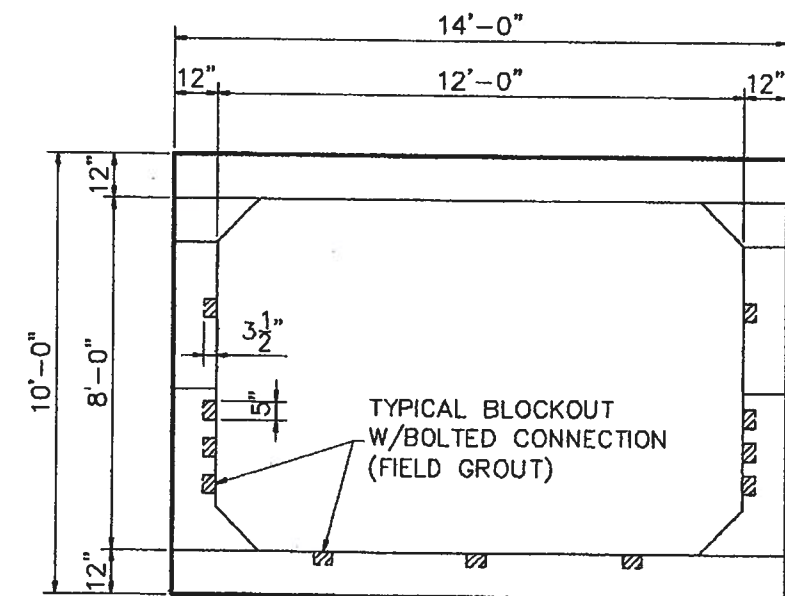


CONNECTION PLATE



TYPICAL BLOCKOUT SECTION

W/BOLTED CONNECTION
(9 LOCATIONS ON 3-SIDED CONNECTIONS)



END VIEW

8-27787

REVISIONS

1	
2	
3	
4	
5	
6	
7	
8	
9	
10	

ISSUE DATE
7-29-04
DRAWN BY
B.W.
CHECKED BY
CLE

DRAWINGS FOR:
WALGREENS STORE
WALNUT ST. & US 40
HIGHLAND, ILLINOIS
BEN F. BLANTON CONSTRUCTION CO.
ST. PETERS, MISSOURI
PRECAST DRAWINGS

EGYPTIAN CONCRETE CO.
POST OFFICE BOX 488
SALEM, IL 62881
PHONE: (618) 548-1190
FAX: (618) 548-1294

SHEET
6
OF 6