

STATE OF ILLINOIS
DEPARTMENT OF TRANSPORTATION

F.A.P. STATE	SECTION	COUNTY	TOTAL SHEETS	SHEET NO.
395	FAP 395 22 SUB	COOK	18	1
		ILLINOIS	CONTRACT NO. 62R67	

FOR INDEX OF SHEETS, SEE SHEET NO. 2

IMPROVEMENT IS LOCATED IN THE CITY OF CHICAGO

TRAFFIC DATA:

I-94 (DAN RYAN EXPWY.)
2021 ADT = 256,600
POSTED SPEED LIMIT = 55MPH

87th STREET
2018 ADT = 29,700
POSTED SPEED LIMIT = 30MPH

**PROPOSED
HIGHWAY PLANS**
FAP ROUTE 395: 87th STREET
OVER I-94 (DAN RYAN EXPRESSWAY) / CTA
SECTION: FAP 395 22 SUB
BRIDGE SUBSTRUCTURE REPAIRS

COOK COUNTY

C-91-217-22

C.U.A.N.
CHICAGO UTILITY ALERT NETWORK
1-312-744-7000

PROJECT ENGINEER: RODRIGO LEDEZMA (847) 705-4580
PROJECT MANAGER: J. ALAIN MIDY (847) 221-3056

CONTRACT NO. 62R67



IMPROVEMENT LOCATION:
87th STREET OVER I-94 (DAN RYAN EXPWY.) / CTA
SN: 016-1142



STATE OF ILLINOIS
DEPARTMENT OF TRANSPORTATION

SUBMITTED August 18 2022
Gregorio [Signature] REGIONAL ENGINEER
October 14, 2022
[Signature]
ENGINEER OF DESIGN AND ENVIRONMENT

October 14, 2022
[Signature]
DIRECTOR OF HIGHWAYS PROJECT IMPLEMENTATION

PRINTED BY THE AUTHORITY
OF THE STATE OF ILLINOIS

INDEX OF SHEETS

1. TITLE SHEET
2. INDEX OF SHEETS, STATE STANDARDS AND GENERAL NOTES
3. SUMMARY OF QUANTITIES
- 4 - 8. PROPOSED BRIDGE PLANS
- 9 - 11. EXISTING BRIDGE PLANS
12. ENTRANCE AND EXIT RAMP CLOSURE DETAILS (TC-08)
13. TRAFFIC CONTROL DETAILS FOR FREEWAY SINGLE AND MULTI-LANE WEAVE (TC-09)
14. TRAFFIC CONTROL AND PROTECTION FOR SIDE ROADS, INTERSECTIONS AND DRIVEWAYS (TC-10)
15. TRAFFIC CONTROL AND PROTECTION AND TURN BAYS (TO REMAIN OPEN TO TRAFFIC (TC-14)
16. TRAFFIC CONTROL FOR FREEWAY SHOULDER CLOSURES AND PARTIAL RAMP CLOSURES (TC-17)
17. FREEWAY/EXPRESSWAY SIGNING FOR FLAGGING OPERATIONS AT WORK ZONE OPENINGS ON FREEWAYS/EXPRESSWAYS (TC-18)
18. ARTERIAL ROAD INFORMATION SIGN (TC-22)

STATE STANDARDS

STANDARD NO. DESCRIPTION

701101-05	OFF-ROAD OPERATIONS, MULTILANE, 15' TO 24" FROM PAVEMENT EDGE
701106-02	OFF-ROAD OPERATIONS, MULTILANE, MORE THAN 15' AWAY
701400-11	APPROACH TO LANE CLOSURE, FREEWAY/EXPRESSWAY
701401-13	LANE CLOSURE, FREEWAY/EXPRESSWAY
701411-09	LANE CLOSURE, MULTILANE, TRAFFIC CONTROL AT ENTRANCE OR EXIT RAMP, FOR SPEEDS >=45 MPH
701427-05	LANE CLOSURE, MULTILANE, INTERMITTENT OR MOVING OPERATION, FOR SPEEDS <=40 MPH
701428-01	TRAFFIC CONTROL SETUP AND REMOVAL FREEWAY/EXPRESSWAY
701446-11	TWO LANE CLOSURE, FREEWAY/EXPRESSWAY
701606-10	URBAN LANE CLOSURE, MULTILANE, 2W WITH MOUNTABLE MEDIAN
701611-01	URBAN HALF ROAD CLOSURE, MULTILANE, 2W WITH MOUNTABLE MEDIAN
701701-10	URBAN LANE CLOSURE, MULTILANE INTERSECTION
701801-06	SIDEWALK, CORNER OR CROSSWALK CLOSURE
701901-08	TRAFFIC CONTROL DEVICES

GENERAL NOTES

1. BEFORE STARTING ANY EXCAVATION, THE CONTRACTOR SHALL CALL "C.U.A.N." AT (312) 744-7000 FOR FIELD LOCATIONS OF BURIED ELECTRIC, TELEPHONE AND GAS UTILITIES. 48 HOUR NOTIFICATION IS REQUIRED.
2. THE CONTRACTOR SHALL COORDINATE CONSTRUCTION ACTIVITIES WITH UTILITY COMPANIES, CTA AND THE CITY OF CHICAGO.
3. PLAN DIMENSIONS AND DETAILS RELATIVE TO EXISTING PLANS ARE SUBJECT TO NOMINAL CONSTRUCTION VARIATIONS. THE CONTRACTOR SHALL FIELD VERIFY EXISTING DIMENSIONS AND DETAILS AFFECTING NEW CONSTRUCTION AND MAKE NECESSARY APPROVED ADJUSTMENTS PRIOR TO CONSTRUCTION OR ORDERING OF MATERIALS. SUCH VARIATIONS SHALL NOT BE CAUSE FOR ADDITIONAL COMPENSATION FOR A CHANGE IN SCOPE OF THE WORK, HOWEVER, THE CONTRACTOR WILL BE PAID FOR THE QUANTITY ACTUALLY FURNISHED BASED AT THE UNIT PRICE BID FOR THE WORK.
4. THE CONTRACTOR WILL NOT BE ALLOWED TO SET UP A YARD OR FIELD OFFICE ON STATE PROPERTY WITHOUT WRITTEN PERMISSION FROM THE DEPARTMENT.
5. THE CONTRACTOR SHALL CONTACT THE DISTRICT ONE TRAFFIC CONTROL SUPERVISOR AT KALPANA.KANNAN-HOSADURGA@ILLINOIS.GOV FOR ARTERIALS A MINIMUM OF 72 HOURS IN ADVANCE OF BEGINNING WORK.
6. THE CONTRACTOR SHALL CONTACT THE DISTRICT ONE TRAFFIC CONTROL SUPERVISOR AT (847) 705-4151 FOR EXPRESSWAYS A MINIMUM OF 72 HOURS IN ADVANCE OF BEGINNING WORK.
7. THE CONTRACTOR SHALL REQUEST AND GAIN APPROVAL FROM THE ILLINOIS DEPARTMENT OF TRANSPORTATION'S EXPRESSWAY TRAFFIC OPERATIONS ENGINEER AT WWW.IDOTLCS.COM AT LEAST 24 HOURS IN ADVANCE OF ALL DAILY LANE, RAMP AND SHOULDER CLOSURES AND 7 DAYS IN ADVANCE OF ALL PERMANENT AND WEEKEND CLOSURES ON ALL FREEWAYS AND/OR EXPRESSWAYS. THIS ADVANCE NOTIFICATION IS CALCULATED BASED ON WORKWEEK OF MONDAY THROUGH FRIDAY AND SHALL NOT INCLUDE WEEKENDS AND HOLIDAYS.
8. THE "ARTERIAL ROAD INFORMATION SIGN (TC-22)" IS APPLICABLE ONLY TO ARTERIAL ROADS AND SHALL NOT BE APPLIED TO EXPRESSWAYS.
9. THE CONTRACTOR SHALL BE REQUIRED TO PROVIDE ACCESS TO ABUTTING PROPERTY AT ALL TIMES DURING THE CONSTRUCTION OF THIS PROJECT.
10. WHEN ARTIFICIAL LIGHTING IS UTILIZED IN NIGHTTIME OPERATIONS, THE CONTRACTOR SHALL EXERCISE THE UTMOST PRECAUTIONS PREVENTING ADVERSE VISIBILITY TO THE MOTORING PUBLIC AND ADJACENT RESIDENTIAL AREAS.
11. THE CONTRACTOR SHALL TAKE NECESSARY PRECAUTIONS WHEN WORKING NEAR THE ABUTMENTS DUE TO ELECTRICAL JUNCTIONS BOXES AND ATTACHED CONDUITS.
12. WHERE UNDERPASS LIGHTING IS PRESENT ON A STRUCTURE, THE CONTRACTOR SHALL ADJUST THE PROTECTIVE SHIELDING TO RIDE ABOVE THE EXISTING LIGHTING FIXTURES IN ORDER TO MAINTAIN THE EXISTING LEVEL OF LIGHTING ON THE ROADWAY UNDERNEATH. DETAILS SHALL BE APPROVED BY THE ENGINEER BEFORE INSTALLATION.
13. ANY ADJUSTMENT DONE TO THE PROTECTIVE SHIELD SYSTEM MUST NOT CHANGE THE LOAD CARRYING CAPACITY OR CONTAINMENT SPECIFICATIONS AS INDICATED IN THE STD SPECS. COST OF ADJUSTING SHIELDING IS INCLUDED IN THE COST OF PROTECTIVE SHIELD.
14. THESE PLANS HAVE BEEN PREPARED FROM NOTES RECEIVED FROM THE BUREAU OF MAINTENANCE BRIDGE INSPECTORS.
15. DO NOT SCALE PLANS FOR CONSTRUCTION DIMENSIONS.
16. CONTRACTOR SHALL MAINTAIN PEDESTRAIN ACCESS AT ALL TIMES DURING CONSTRUCTION.
17. CONTRACTOR SHALL SCHEDULE WORK WITHIN CTA ROW SIMULTANEOUSLY TO TAKE ADVANTAGE OF THE FLAGGERS BEING PRESENT AND MINIMIZE INTERRUPTIONS TO THE CTA OPERATIONS.

FILE NAME =	USER NAME = Iven.Diaz	DESIGNED -	REVISED -	STATE OF ILLINOIS DEPARTMENT OF TRANSPORTATION	INDEX OF SHEETS, STATE STANDARDS, AND GENERAL NOTES	F.A.P. RTE.	SECTION	COUNTY	TOTAL SHEETS	SHEET NO.	
p:\idot-pw\Bentley.com\PWIDOT\Documents\IDOT Offices\District 1\Projects\0117122\CAD\Drawings\0117122-sht-cover.dgn	DRAWN	CHECKED -	REVISED -			395	FAP 395 22 SUB	COOK	18	2	
Default	PLOT SCALE = 100.0000' / in.	DATE -	REVISED -			CONTRACT NO. 62R67					
	PLOT DATE = 9/1/2022	DATE -	REVISED -			SCALE:	SHEET 1	OF 1	SHEETS	STA.	TO STA.

SUMMARY OF QUANTITIES			URBAN TOTAL QUANTITIES	CONSTRUCTION TYPE CODE					
CODE NO	ITEM	UNIT		100% STATE 016-1142 0013					
50157300	PROTECTIVE SHIELD	SQ YD	88	88					
50300225	CONCRETE STRUCTURES	CU YD	1.5	1.5					
52000000	PREFORMED JOINT SEAL 1/2"	FOOT	302	302					
52000005	PREFORMED JOINT SEAL 1"	FOOT	109	109					
52000015	PREFORMED JOINT SEAL 1 1/2"	FOOT	109	109					
59000200	EPOXY CRACK INJECTION	FOOT	12	12					
67100100	MOBILIZATION	L SUM	1	1					
70102625	TRAFFIC CONTROL AND PROTECTION, STANDARD 701606	L SUM	1	1					
70102634	TRAFFIC CONTROL AND PROTECTION, STANDARD 701611	L SUM	1	1					
70102635	TRAFFIC CONTROL AND PROTECTION, STANDARD 701701	L SUM	1	1					
70102640	TRAFFIC CONTROL AND PROTECTION, STANDARD 701801	L SUM	1	1					
70200100	NIGHTTIME WORK ZONE LIGHTING	L SUM	1	1					
X0900022	BRIDGE DRAINAGE SYSTEM REPAIR	FOOT	8	8					

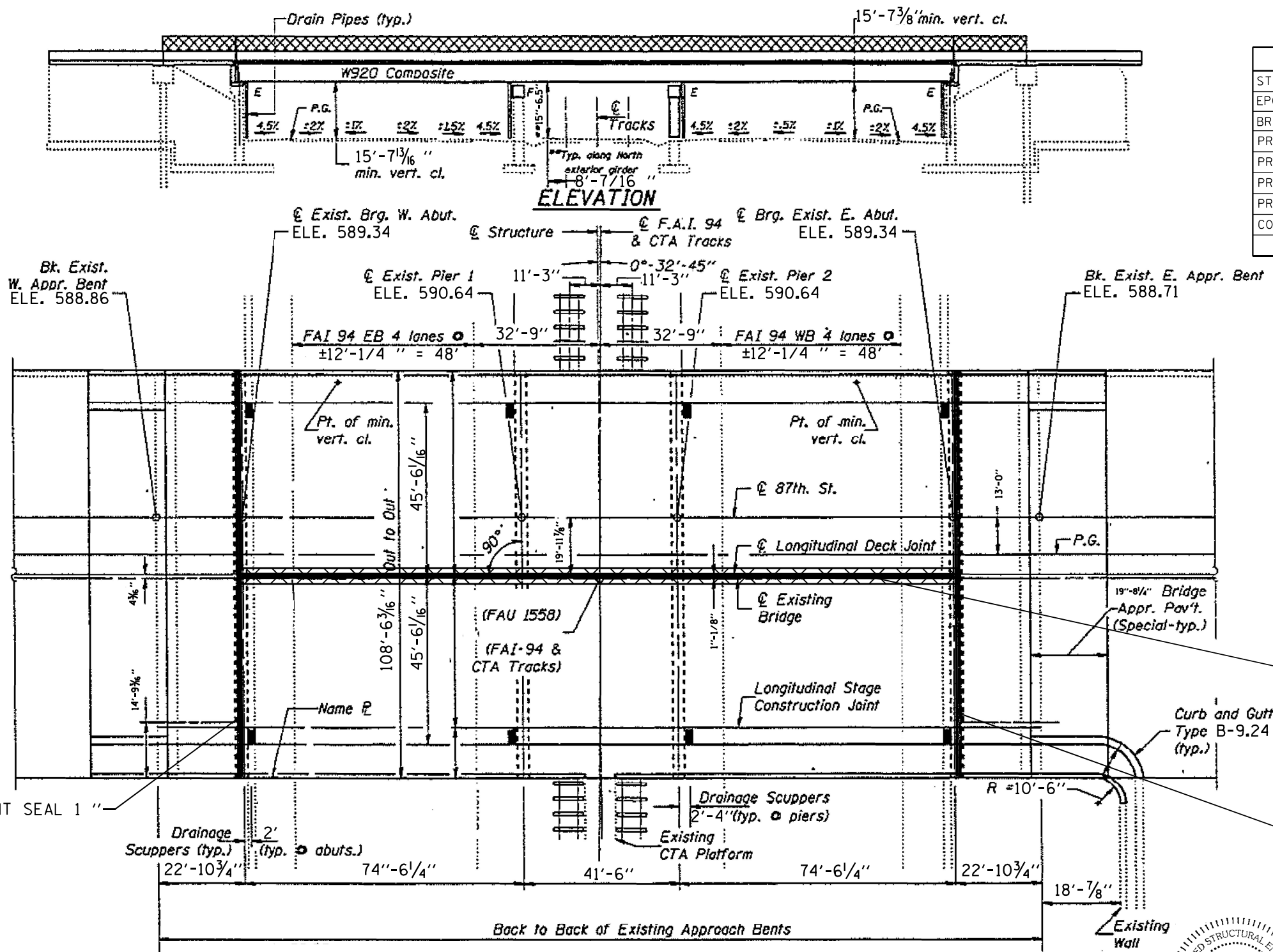
SUMMARY OF QUANTITIES			URBAN TOTAL QUANTITIES	CONSTRUCTION TYPE CODE					
CODE NO	ITEM	UNIT		100% STATE 016-1142 0013					
X6700407	ENGINEER'S FIELD OFFICE, TYPE A (D1)	CAL MO	6	6					
X7011015	TRAFFIC CONTROL AND PROTECTION (EXPRESSWAYS)	L SUM	1	1					
Z0012754	STRUCTURAL REPAIR OF CONCRETE (DEPTH EQUAL TO OR LESS THAN 5 INCHES)	SO FT	722	722					
Z0030850	TEMPORARY INFORMATION SIGNING	SO FT	102.8	102.8					
Z0048665	RAILROAD PROTECTIVE LIABILITY INSURANCE	L SUM	1	1					

FILE NAME =	USER NAME = nanDiaz	DESIGNED -	REVISED -
pw\N1dot-pw\benley.com\PW\DOT\Documents\DOT - Office\District\Projects\DI1122\CADD\Design\DI1122-stn-conc.dwg		DRAWN -	REVISED -
		CHECKED -	REVISED -
		DATE -	REVISED -

**STATE OF ILLINOIS
DEPARTMENT OF TRANSPORTATION**

SUMMARY OF QUANTITIES			
SCALE:	SHEET NO.	OF SHEETS	STA. TO STA.

F.A.P. RTE.	SECTION	COUNTY	TOTAL SHEETS	SHEET NO.
395	FAP 395 22 SUB	COOK	18	3
CONTRACT NO. 62R67				
FED. ROAD DIST. NO. 1 ILLINOIS FED. AID PROJECT				



TOTAL BILL OF MATERIALS (S.N. 016-1142)

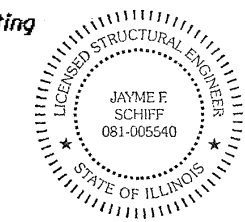
ITEM	UNIT	QUANTITY
STRUCTURAL REPAIR OF CONCRETE DEPTH ≤5"	SQ.FT.	722
EPOXY CRACK INJECTION	FOOT	12
BRIDGE DRAINAGE SYSTEM REPAIR	FOOT	8
PREFORMED JOINT SEAL 1/2"	FOOT	302
PREFORMED JOINT SEAL 1"	FOOT	109
PREFORMED JOINT SEAL 1 1/2"	FOOT	109
PROTECTIVE SHIELD	SO.YD.	88
CONCRETE STRUCTURES	CU.YD.	1.5

PROP. PREFORMED JOINT SEAL 1"

PROP. PREFORMED JOINT SEAL 1/2"
(ALONG LONGITUDINAL DECK JOINT)

PROP. PREFORMED JOINT SEAL 1 1/2"

LEGEND:
 PROP. PROTECTIVE SHIELD
 (UNDERNEATH LONGITUDINAL JOINT)



EXPIRES 11-30-2022

Jayme F. Schiff

PLAN

MODEL: Default
 FILE: 3dmodel.pia
 PROJECT: I:\Projects\117122\CADD\117122-01-01.dwg
 PLOT DATE: 10/5/2022

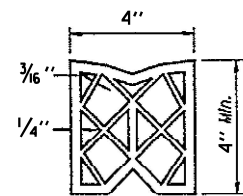
USER NAME = Ivan.Diaz	DESIGNED -	REVISED -
	DRAWN -	REVISED -
PLOT SCALE = 100,0000' / in.	CHECKED -	REVISED -
PLOT DATE = 10/5/2022	DATE -	REVISED -

**STATE OF ILLINOIS
DEPARTMENT OF TRANSPORTATION**

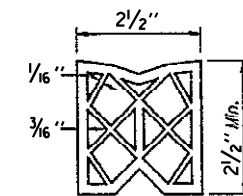
**87TH STREET OVER I-94 (S.N. 016-1142)
DECK & APPROACH REPAIRS**

SCALE: SHEET 1 OF 1 SHEETS STA. TO STA.

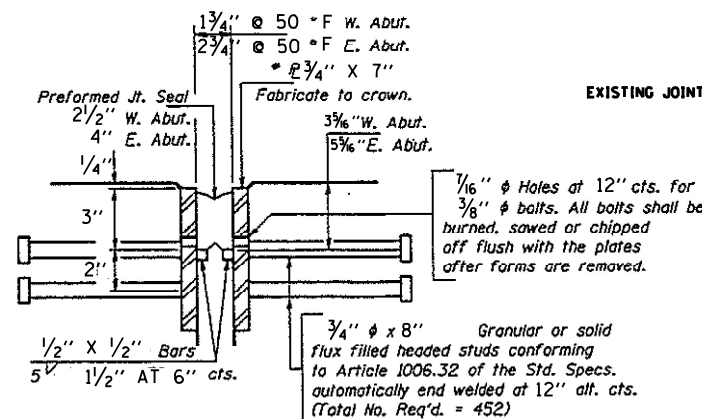
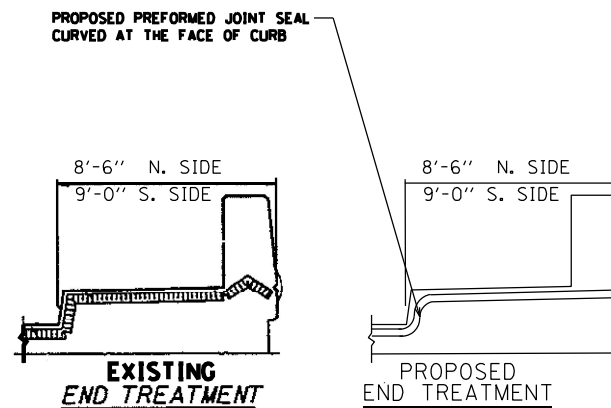
F.A.P. RTE.	SECTION	COUNTY	TOTAL SHEETS	SHEET NO.
395	FAP 395 22 SUB	COOK	18	4
CONTRACT NO. 62R67				
ILLINOIS FED. AID PROJECT				



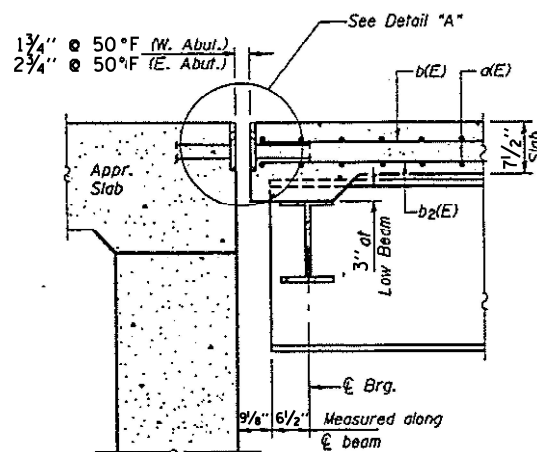
**PREFORMED JOINT SEAL 4"
EXISTING EAST ABUTMENT**



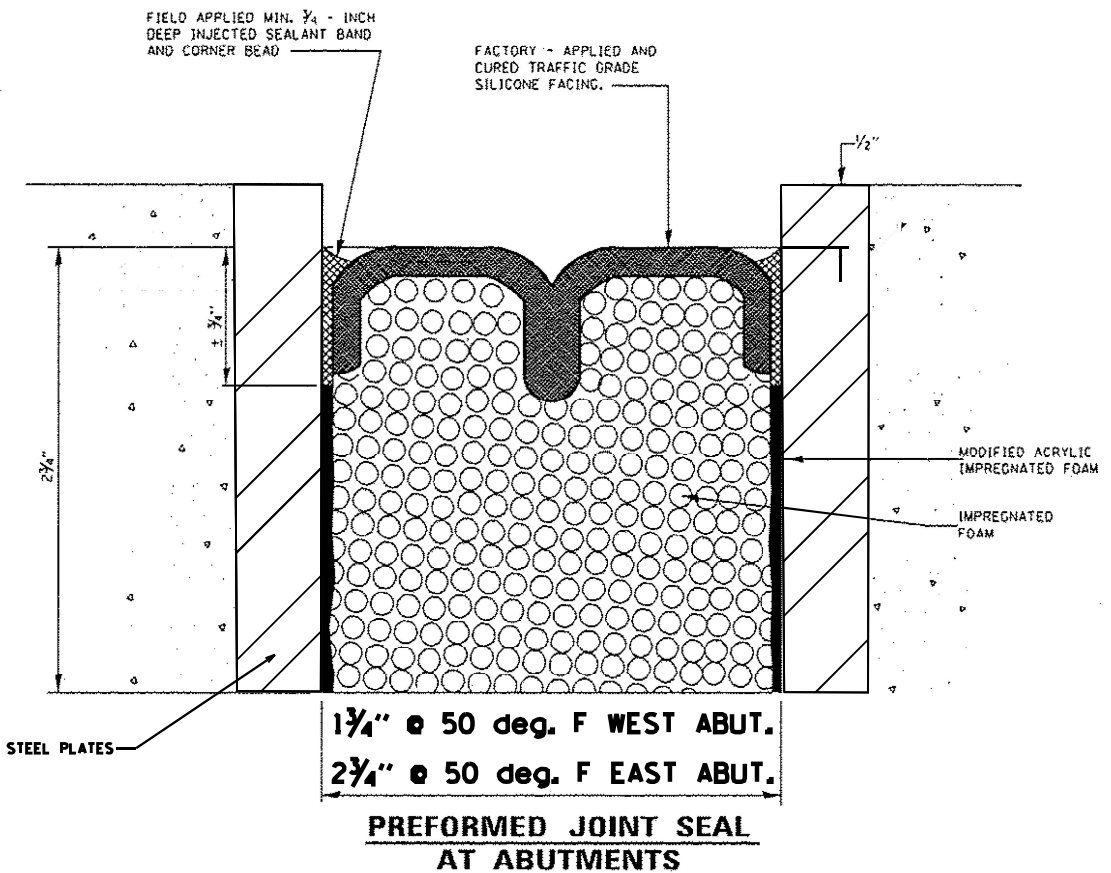
**PREFORMED JOINT SEAL 2 1/2"
EXISTING WEST ABUTMENT**



EXISTING DETAIL A



SECTION A-A



**PREFORMED JOINT SEAL
AT ABUTMENTS**

GENERAL NOTES:

PLAN DIMENSIONS AND DETAILS RELATIVE TO EXISTING PLANS ARE SUBJECT TO NOMINAL CONSTRUCTION VARIATIONS. THE CONTRACTOR SHALL FIELD VERIFY EXISTING DIMENSIONS AND DETAILS AFFECTING NEW CONSTRUCTION AND MAKE NECESSARY APPROVED ADJUSTMENT PRIOR TO CONSTRUCTION OR ORDERING OF MATERIALS. SUCH VARIATIONS SHALL NOT BE CAUSE FOR ADDITIONAL COMPENSATION FOR A CHANGE IN SCOPE OF THE WORK. HOWEVER, THE CONTRACTOR WILL BE PAID FOR THE QUANTITY ACTUALLY FURNISHED BASED AT THE UNIT PRICE BID FOR THE WORK.

REPAIR AREAS OF SPALLED OR DETERIORATED CONCRETE ADJACENT TO EXPANSION JOINT.

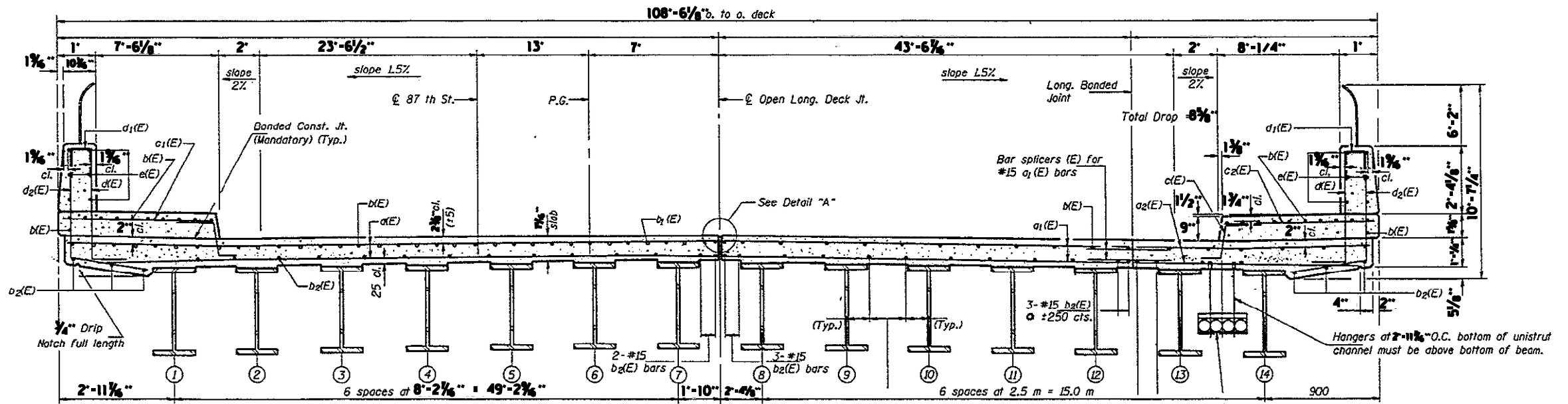
JOINT SEALS SHALL BE PREFORMED PRE-COMPRESSED, SILICONE COATED SELF-EXPANDING SEALANT SYSTEM.

**STATE OF ILLINOIS
DEPARTMENT OF TRANSPORTATION**

**87TH STREET OVER I-94 (S.N. 016-1142)
JOINT DETAILS**

F.A.P. RTE.	SECTION	COUNTY	TOTAL SHEETS	SHEET NO.
395	FAP 395 22 SUB	COOK	18	5
ILLINOIS FED. AID PROJECT			CONTRACT NO. 62R67	

SCALE: SHEET 1 OF 1 SHEETS STA. TO STA.



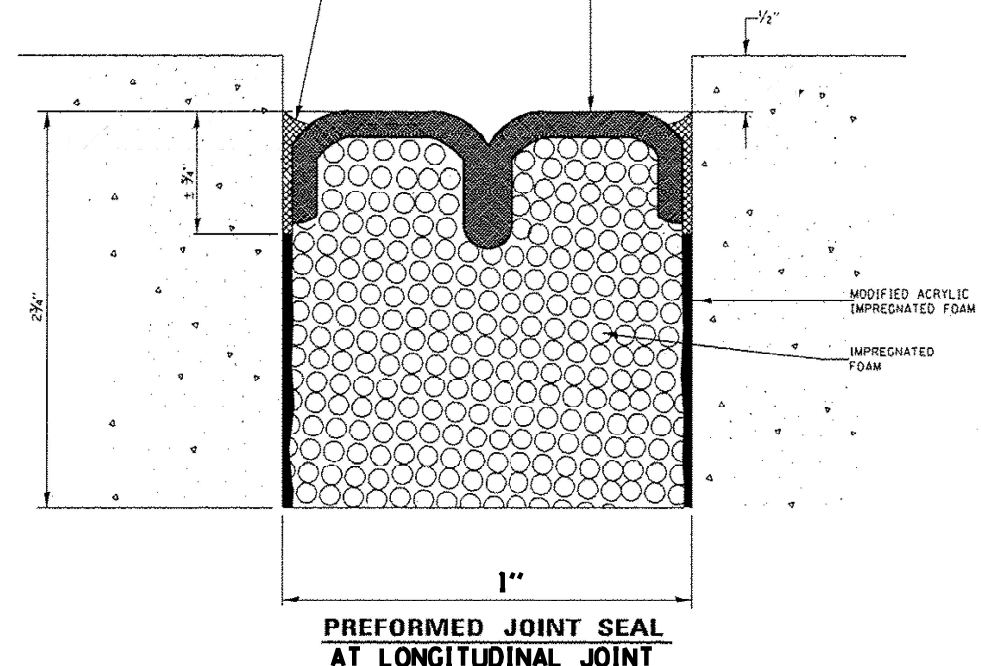
CROSS SECTION
(Looking East)

FIELD APPLIED MIN. 1/4" DEEP INJECTED SEALANT BAND AND CORNER BEAD

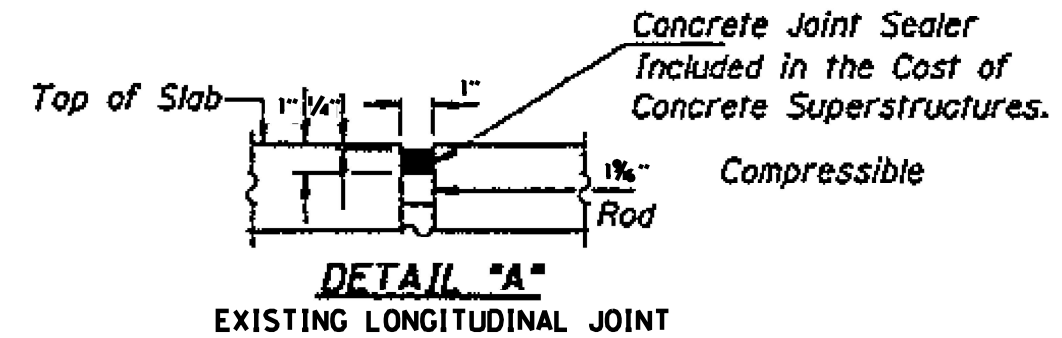
FACTORY - APPLIED AND CURED TRAFFIC GRADE SILICONE FACING.

NEAR PIERS AND SPAN 2

NEAR MIDSPAN SPANS 1 & 3



PREFORMED JOINT SEAL AT LONGITUDINAL JOINT



DETAIL "A"
EXISTING LONGITUDINAL JOINT

GENERAL NOTES:

PLAN DIMENSIONS AND DETAILS RELATIVE TO EXISTING PLANS ARE SUBJECT TO NOMINAL CONSTRUCTION VARIATIONS. THE CONTRACTOR SHALL FIELD VERIFY EXISTING DIMENSIONS AND DETAILS AFFECTING NEW CONSTRUCTION AND MAKE NECESSARY APPROVED ADJUSTMENT PRIOR TO CONSTRUCTION OR ORDERING OF MATERIALS. SUCH VARIATIONS SHALL NOT BE CAUSE FOR ADDITIONAL COMPENSATION FOR A CHANGE IN SCOPE OF THE WORK, HOWEVER, THE CONTRACTOR WILL BE PAID FOR THE QUANTITY ACTUALLY FURNISHED BASED AT THE UNIT PRICE BID FOR THE WORK.

REPAIR AREAS OF SPALLED OR DETERIORATED CONCRETE ADJACENT TO EXPANSION JOINT.

JOINT SEALS SHALL BE PREFORMED PRE-COMPRESSED, SILICONE COATED SELF-EXPANDING SEALANT SYSTEM.

MODEL: Default
FILE: 304162.dwg
PROJECT: 11/17/22:CADdata\Design\117122-abridge.dgn

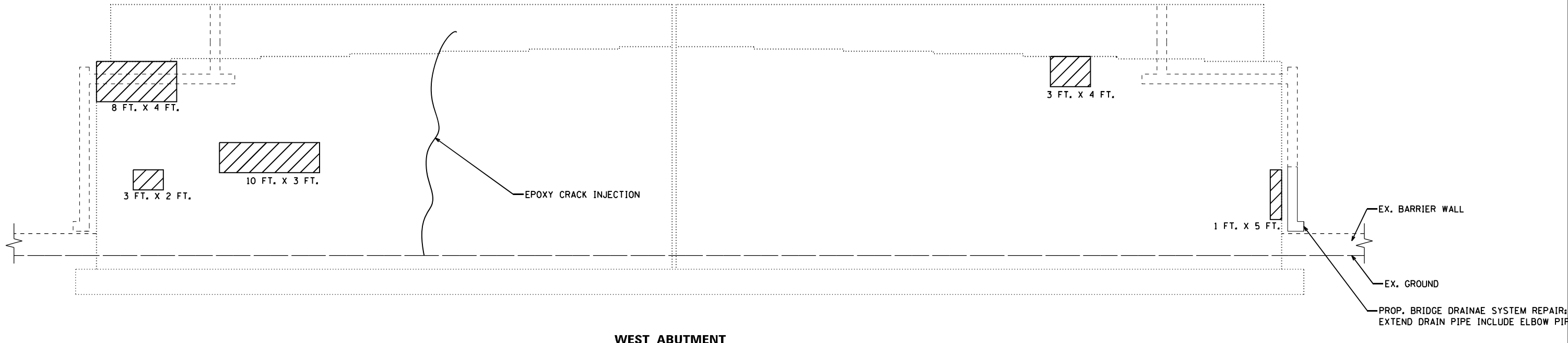
USER NAME = Ivan,Diez	DESIGNED -	REVISED -
	DRAWN -	REVISED -
PLOT SCALE = 100,0000' / in.	CHECKED -	REVISED -
PLOT DATE = 10/4/2022	DATE -	REVISED -

STATE OF ILLINOIS
DEPARTMENT OF TRANSPORTATION

87TH STREET OVER I-94 (S.N. 016-1142)
CROSS SECTION

SCALE: SHEET 1 OF 1 SHEETS STA. TO STA.

F.A.P. RTE. 395	SECTION FAP 395 22 SUB	COUNTY COOK	TOTAL SHEETS 18	SHEET NO. 6
ILLINOIS FED. AID PROJECT			CONTRACT NO. 62R67	



WEST ABUTMENT

NOTES:
 THE DRAINAGE SYSTEM SHALL BE WATCHED AND PROTECTED FROM STRUCTURAL REPAIR OF CONCRETE

LEGEND:
 STRUCTURAL REPAIR OF CONCRETE (DEPTH EQUAL TO OR LESS THAN 5 INCHES)

BILL OF MATERIALS (WEST ABUTMENT)

ITEM	UNIT	QUANTITY
STRUCTURAL REPAIR OF CONCRETE DEPTH ≤5"	SQ.FT.	85
EPOXY CRACK INJECTION	FOOT	12
BRIDGE DRAINAGE SYSTEM REPAIR	FOOT	8

MODEL: Default
 FILE NAME: p:\ultra\paw_bentley.com\p\1\1\DOT\Documents\1\DOT Office\District_1\Project\1\17122\CADD\data\Design\1\17122-repairs.dgn

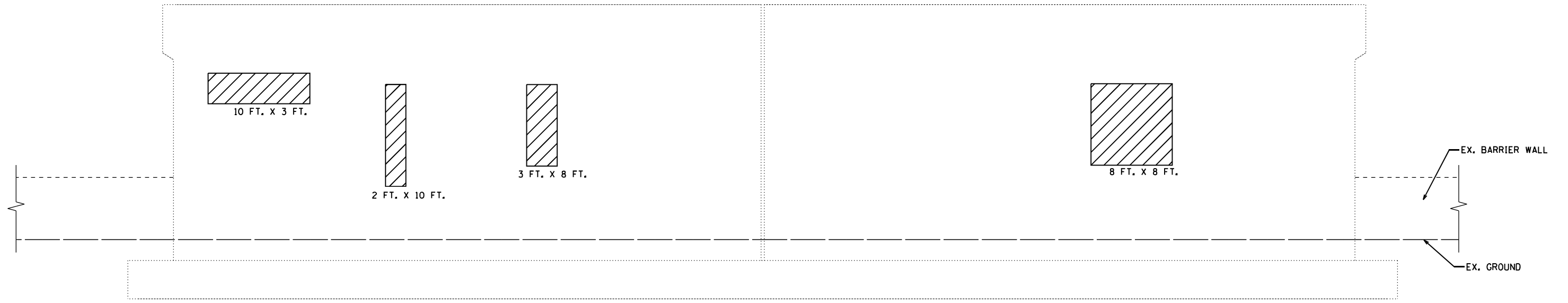
USER NAME = Ivan.Diaz	DESIGNED -	REVISED -
	DRAWN -	REVISED -
PLOT SCALE = 100,0000' / in.	CHECKED -	REVISED -
PLOT DATE = 8/30/2022	DATE -	REVISED -

**STATE OF ILLINOIS
 DEPARTMENT OF TRANSPORTATION**


**87TH STREET OVER I-94 (S.N. 016-1142)
 WEST ABUTMENT REPAIRS**

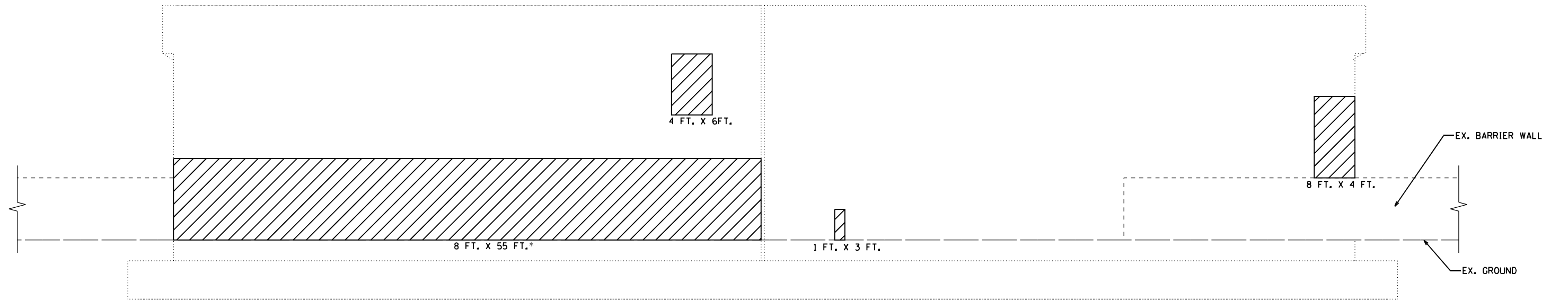
SCALE: SHEET 1 OF 1 SHEETS STA. TO STA.

F.A.P. RTE.	SECTION	COUNTY	TOTAL SHEETS	SHEET NO.
395	FAP 395 22 SUB	COOK	18	7
ILLINOIS FED. AID PROJECT			CONTRACT NO. 62R67	



PIER 1 (EAST FACE: CTA SIDE)

LEGEND:
 STRUCTURAL REPAIR OF CONCRETE (DEPTH EQUAL TO OR LESS THAN 5 INCHES)



PIER 1 (WEST FACE)

* STRUCTURAL REPAIR OF CONCRETE IN THIS AREA SHALL BE REPAIRED IN 3 SECTIONS AND AS DIRECTED BY ENGINEER. AN ADDITIONAL 1" OF CONCRETE SHALL BE ADDED WITH BEVELLED ENDS AND PAID AS CONCRETE STURCTURES.

BILL OF MATERIALS (PIER 1)

ITEM	UNIT	QUANTITY
STRUCTURAL REPAIR OF CONCRETE DEPTH ≤5"	SQ.FT.	637
CONCRETE STRUCTURES	CU.YD.	1.5

MODEL: Default
 FILE NAME: p:\ultra-caw-bee\caw.com\PIV\DOT\Documents\DOT_Offices\District_1\Projects\117122\CADD\DATA\Design\117122-arepa1r.dgn

USER NAME = Ivan.Diaz	DESIGNED -	REVISED -
PLOT SCALE = 100,0000' / in.	DRAWN -	REVISED -
PLOT DATE = 8/30/2022	CHECKED -	REVISED -
	DATE -	REVISED -

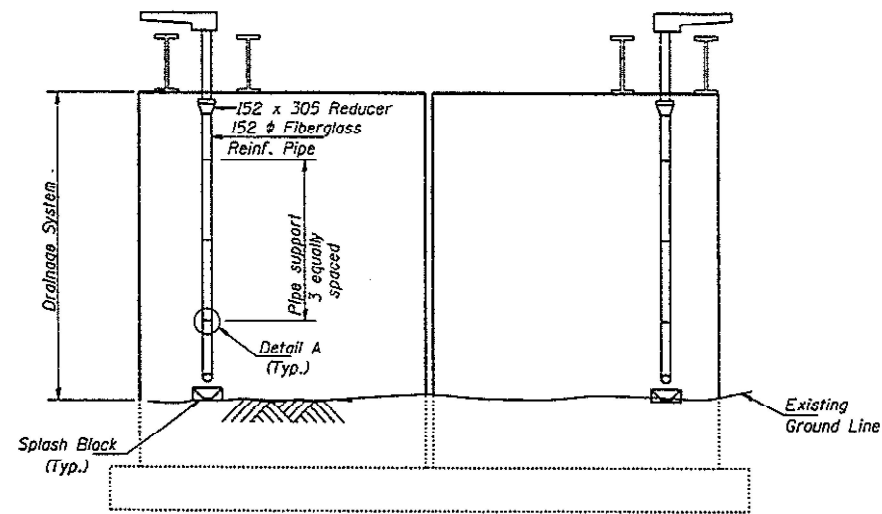
**STATE OF ILLINOIS
 DEPARTMENT OF TRANSPORTATION**

**87TH STREET OVER I-94 (S.N. 016-1142)
 PIER 1 REPAIRS**

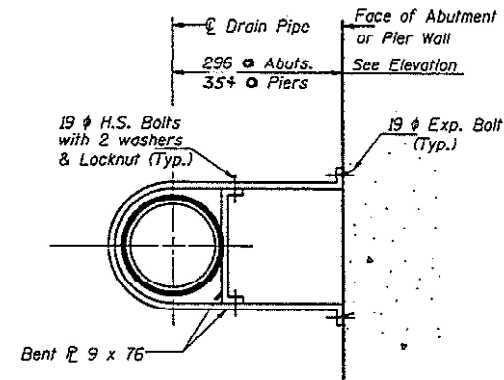
SCALE: SHEET 1 OF 1 SHEETS STA. TO STA.

F.A.P. RTE. 395	SECTION FAP 395 22 SUB	COUNTY COOK	TOTAL SHEETS 18	SHEET NO. 8
ILLINOIS FED. AID PROJECT			CONTRACT NO. 62R67	

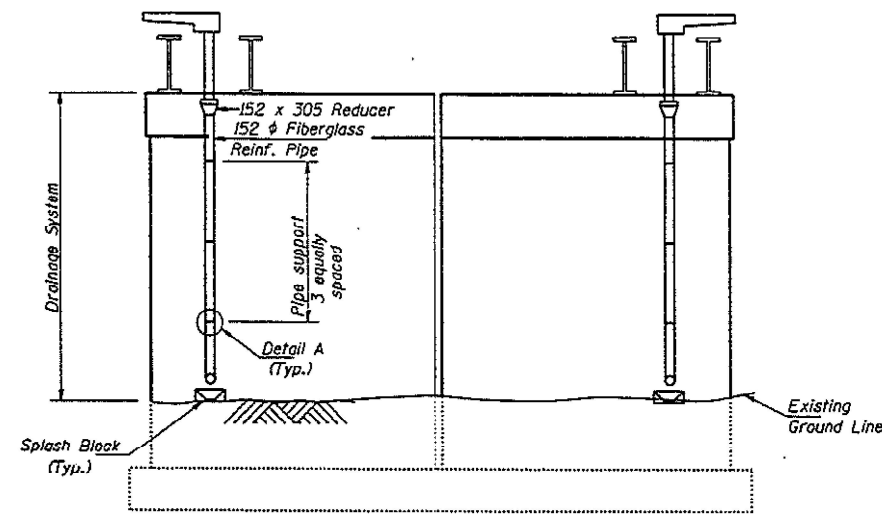
FOR INFORMATION ONLY



**ELEVATION
ABUTMENTS**



DETAIL A
Connection at Abutment and Pier Wall.



**ELEVATION
PIERS**

MODEL: Default
 FILE: 3dmodel.pia
 SUBJECT: new benchtop.com/PW/INDOT/Documents/INDOT Offices/District 1/Projects/ID117122/CADD/Drawings/Drawings/117122-abridge.dgn

USER NAME = Ivan,Diez	DESIGNED -	REVISED -
PLOT SCALE = 100,0000' / in.	DRAWN -	REVISED -
PLOT DATE = 8/30/2022	CHECKED -	REVISED -
	DATE -	REVISED -

**STATE OF ILLINOIS
DEPARTMENT OF TRANSPORTATION**

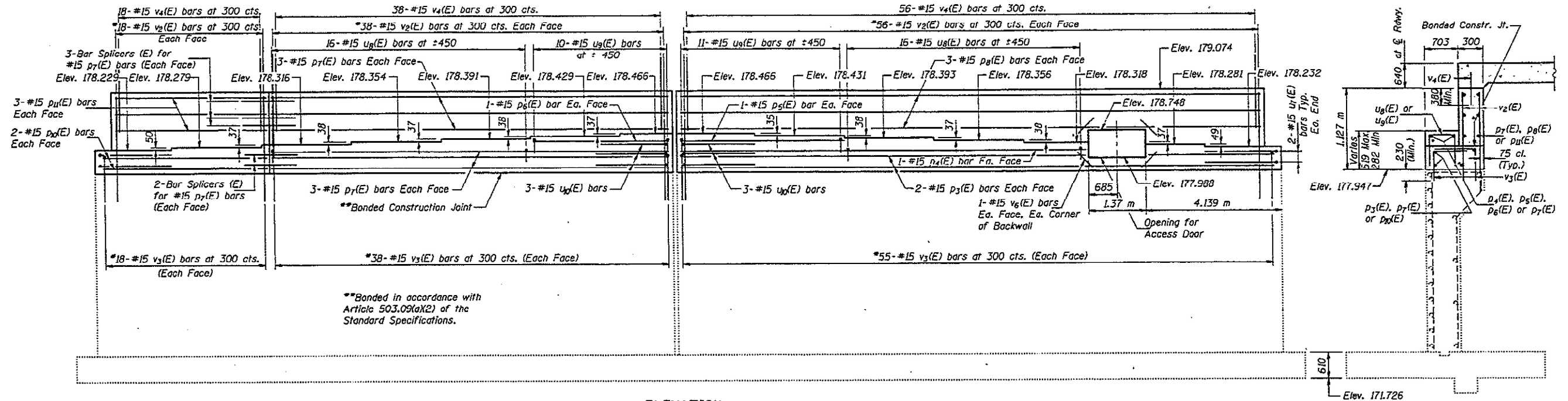
**87TH STREET OVER I-94 (S.N. 016-1142)
GENERAL DATA**

SCALE: SHEET 1 OF 1 SHEETS STA. TO STA.

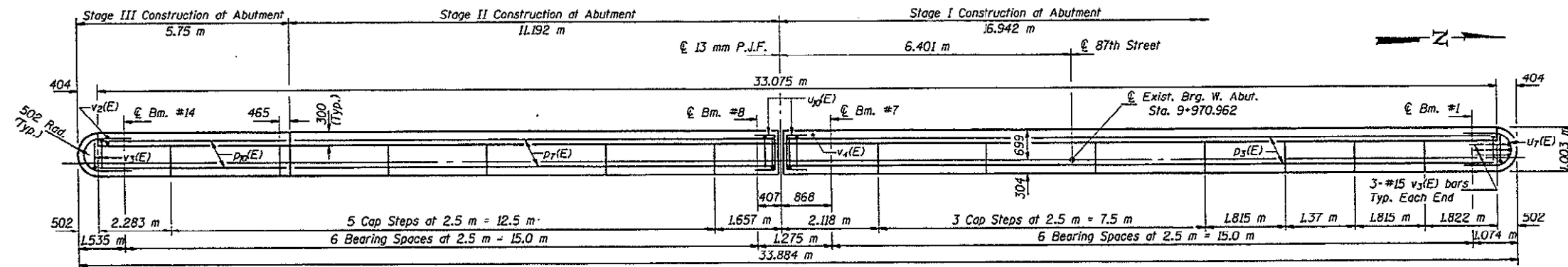
F.A.P. RTE. 395	SECTION FAP 395 22 SUB	COUNTY COOK	TOTAL SHEETS 18	SHEET NO. 9
			CONTRACT NO. 62R67	
		ILLINOIS FED. AID PROJECT		

FOR INFORMATION ONLY

Pour steps monolithically with cap.
 Space reinforcement in cap to miss anchor bolts.
 All edges shall have standard 20 mm chamfers except as noted.
 Existing vertical reinforcement bars encountered during concrete removal shall be cleaned and straightened for incorporation into the new construction.
 *Drill and grout #15 v₂(E) and v₃(E) bars in 19 mm φ x 230 mm (min.) holes.
 The grout and method of application shall be approved by the Department.
 For Concrete Removal Details of Abutment see sheet #21 of 32.
 Cut reinforcement to clear access opening.



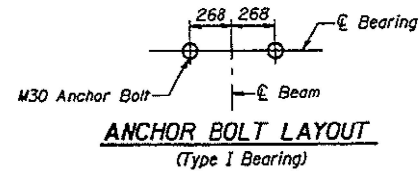
ELEVATION



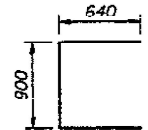
PLAN

Note: Prior to construction at the abutment, the Contractor should coordinate with all utility companies the location of all conduits which may pass thru the backwall of the abutment.
 For Access Door details see sheet #2 of 32.

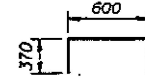
MIN. BAR LAP
 #15 Bar = 640



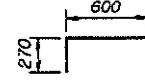
ANCHOR BOLT LAYOUT
 (Type I Bearing)



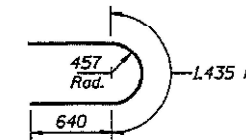
BAR u₁(E)



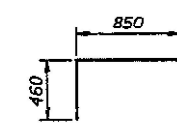
BAR u₂(E)



BAR u₃(E)



BAR u₇(E)



BAR v₃(E)

MODEL: Default
 FILE: Abutment West Side.dwg
 PROJECT: I:\Projects\117122\CADD\Drawings\DOT Office\Drawings\117122-Subdrain.dwg

USER NAME = Ivan.Diaz	DESIGNED -	REVISED -
	DRAWN -	REVISED -
PLOT SCALE = 100,0000' / in.	CHECKED -	REVISED -
PLOT DATE = 8/30/2022	DATE -	REVISED -

STATE OF ILLINOIS
DEPARTMENT OF TRANSPORTATION

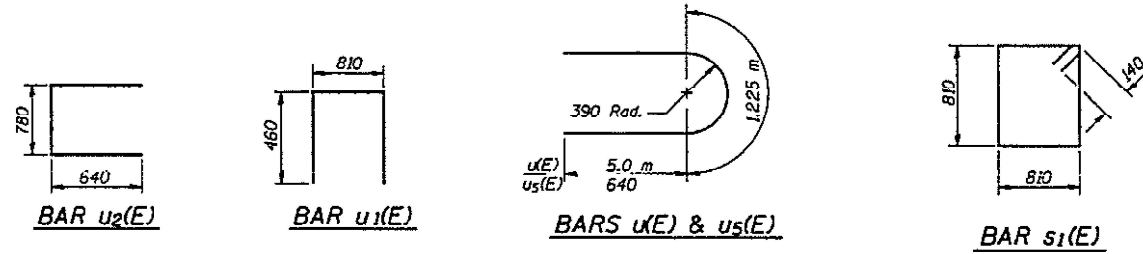
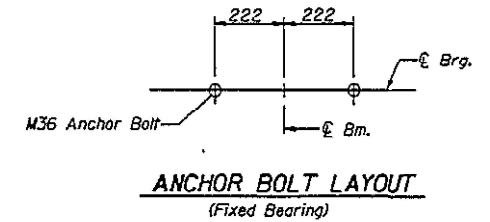
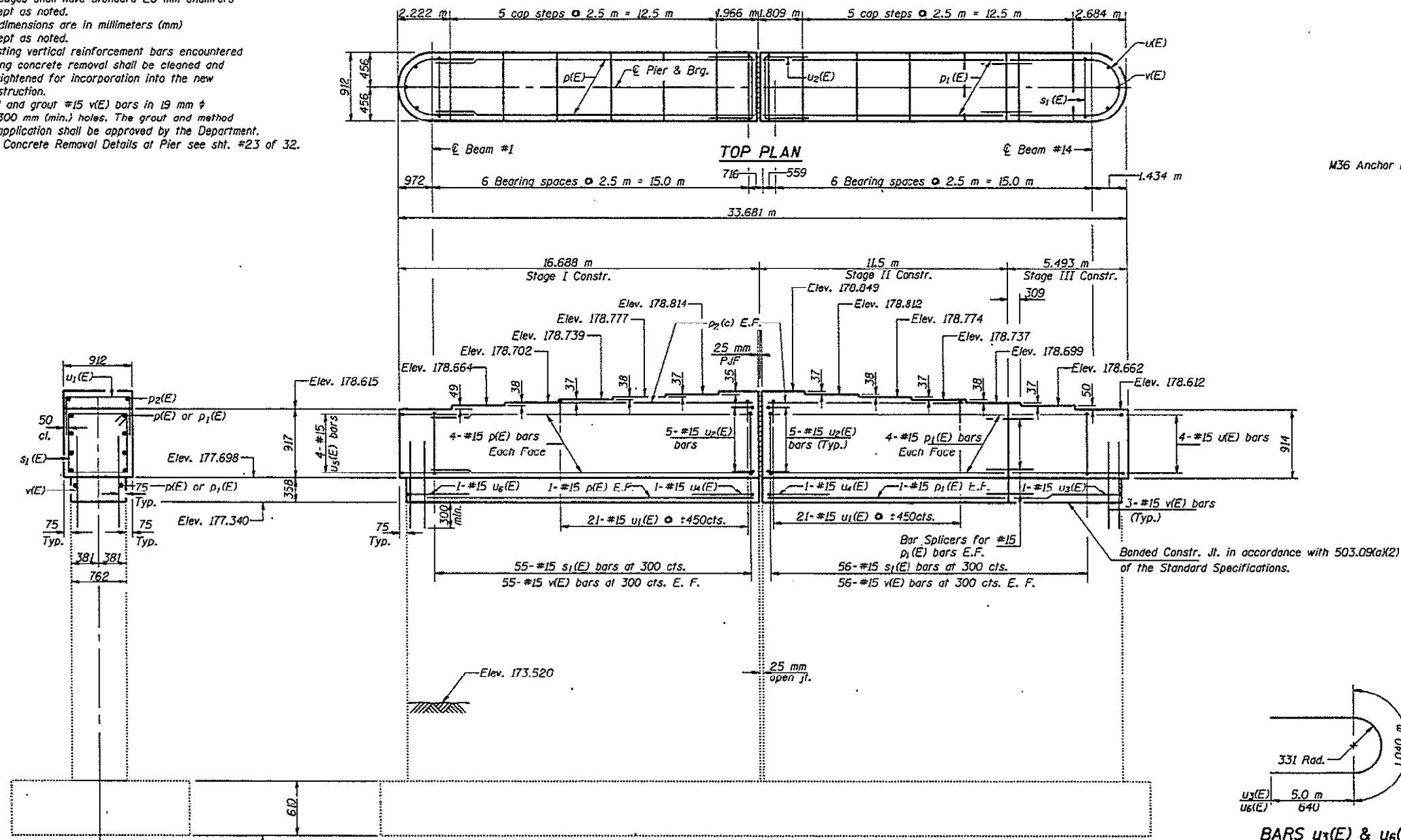
87TH STREET OVER I-94 (S.N. 016-1142)
WEST ABUTMENT

SCALE: SHEET 1 OF 1 SHEETS STA. TO STA.

F.A.P. RTE.	SECTION	COUNTY	TOTAL SHEETS	SHEET NO.
395	FAP 395 22 SUB	COOK	18	10
CONTRACT NO. 62R67				
ILLINOIS FED. AID PROJECT				

FOR INFORMATION ONLY

Notes: Space reinforcement in cap to miss anchor bolts.
 Pour steps monolithically with cap.
 All edges shall have standard 20 mm chamfers except as noted.
 All dimensions are in millimeters (mm) except as noted.
 Existing vertical reinforcement bars encountered during concrete removal shall be cleaned and straightened for incorporation into the new construction.
 Drill and grout #15 v(E) bars in 19 mm ϕ by 300 mm (min.) holes. The grout and method of application shall be approved by the Department.
 For Concrete Removal Details at Pier see sht. #23 of 32.



MODEL: Default
 FILE: 3dmodel.pia
 PROJECT: 117122 (C:\ddata\Design\117122-bridge.dgn)
 PLOT DATE: 8/30/2022

USER NAME = Ivan.Diaz	DESIGNED -	REVISED -
DRAWN -	REVISOR -	REVISION -
PLOT SCALE = 100,0000' / in.	CHECKED -	REVISOR -
PLOT DATE = 8/30/2022	DATE -	REVISION -

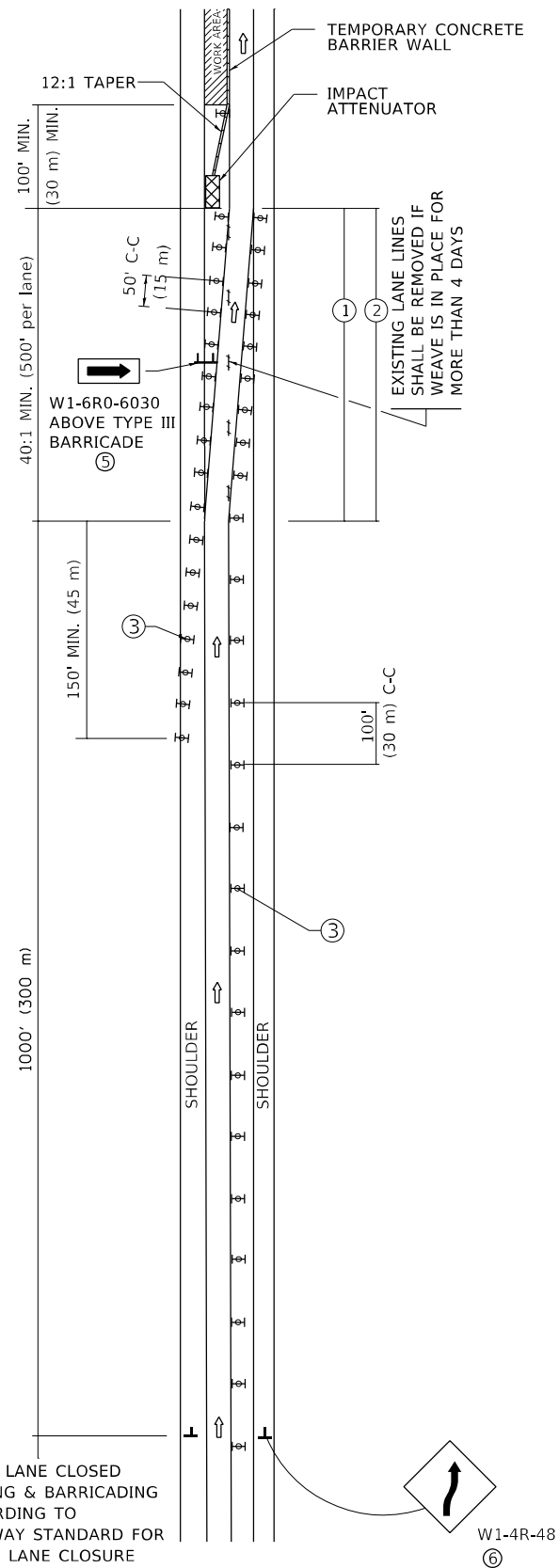
STATE OF ILLINOIS
 DEPARTMENT OF TRANSPORTATION

87TH STREET OVER I-94 (S.N. 016-1142)
 PIER 1

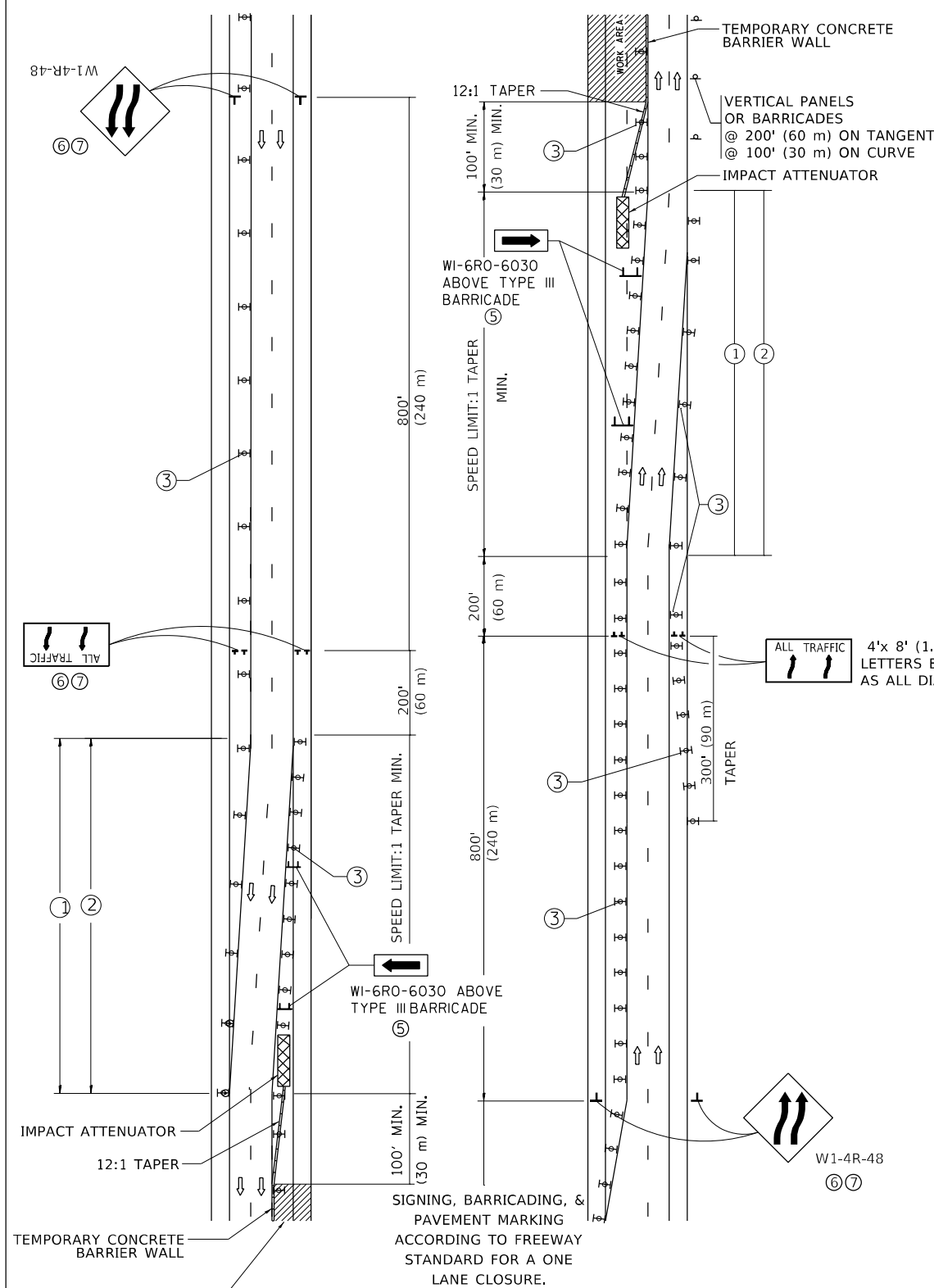
SCALE: SHEET 1 OF 1 SHEETS STA. TO STA.

F.A.P. RTE. 395	SECTION FAP 395 22 SUB	COUNTY COOK	TOTAL SHEETS 18	SHEET NO. 11
CONTRACT NO. 62R67			ILLINOIS FED. AID PROJECT	

SINGLE LANE WEAVE



MULTI-LANE WEAVE



GENERAL NOTES:

- ① EXISTING CONFLICTING PAVEMENT MARKING LINES SHALL BE REMOVED. PAVEMENT MARKING REMOVAL SHALL NOT BE REQUIRED FOR SINGLE LANE WEAVES UNDER 4 DAYS IN DURATION.
- ② CONTINUOUS REFLECTIVE TEMPORARY PAVEMENT MARKING TAPE SHALL BE PLACED THROUGHOUT THE TAPER AND FOR 300' (90 m) ALONG SIDE THE WORK AREA WHERE THE CLOSURE TIME IS GREATER THAN FOURTEEN DAYS. THE LEFT EDGE LINE SHALL BE YELLOW AND THE RIGHT EDGE LINE SHALL BE WHITE. FOR MULTI-LANE WEAVES LANE LINES SHALL BE 5 INCH, 10'-30' (3 m-9 m) SKIP DASH, WHITE.
- ③ PLASTIC DRUMS WITH STEADY BURN LIGHTS AT 50' (15 m) C-C SPACING IN TAPERS AND 100' (30 m) C-C SPACING IN TANGENTS.
- ④ ALL SIGNS SHALL BE POST MOUNTED IF THE CLOSURE TIME EXCEEDS FOUR DAYS.
- ⑤ TYPE III BARRICADES MAY BE OMITTED FOR SINGLE-LANE WEAVES UNDER 24-HOURS IN DURATION. W1-6 SIGNS WILL STILL BE REQUIRED. IF THE WIDTH OF OFFSET IS LESS THAN 6' THEN THE TYPE III BARRICADE WITH ATTACHED ARROW SIGN PANEL CAN BE ELIMINATED IN THE TAPER AREAS.
- ⑥ WHEN THE LENGTH OF THE SHIFTED SEGMENT (DISTANCE BETWEEN WEAVE POINTS) IS LESS THAN 1500', DOUBLE REVERSE CURVE SIGNS (W24-1) SHOULD BE USED INSTEAD OF THE REVERSE CURVE (W1-4) SIGNS. ARROWS ON THE 4'X8' "ALL TRAFFIC" SIGNS SHALL BE THE SAME SHAPE.
- ⑦ THE NUMBER OF ARROWS ON THESE SIGNS SHALL MATCH THE NUMBER OF LANES OPEN TO TRAFFIC.

SYMBOLS

- DIRECTION OF TRAFFIC
- WORK AREA
- SIGN ON PORTABLE OR PERMANENT SUPPORT
- TYPE II BARRICADE OR DRUM WITH MONO-DIRECTIONAL STEADY BURNING LIGHT
- TEMPORARY CONCRETE BARRIER WALL
- IMPACT ATTENUATOR
- W1-4R-48
- W24-1-48

ALL DIMENSIONS ARE IN INCHES (MILLIMETERS) UNLESS OTHERWISE SHOWN

MODEL: Default
FILE: \\nafe\p\build\paw_beaufay.com\PIV\DOT\Documents\DOT Office\Dist\dtd: \\projects\117122\Cadd\data\Design\BartSt6.dgn

USER NAME = Ivan.Diaz	DESIGNED - D.W.S.	REVISED - J.A.F. 02-06
PLOT SCALE = 100,000' / in.	CHECKED -	REVISED - S.P.B. 01-07
PLOT DATE = 8/30/2022	DATE - 02-87	REVISED - S.P.B. 12-09
		REVISED - M.D. 06-13

**STATE OF ILLINOIS
DEPARTMENT OF TRANSPORTATION**

**TRAFFIC CONTROL DETAILS FOR
FREEWAY SINGLE & MULTI-LANE WEAVE**

SCALE: NONE SHEET 1 OF 1 SHEETS STA. TO STA.

F.A.P. RTE.	SECTION	COUNTY	TOTAL SHEETS	SHEET NO.
395	FAP 395 22 SUB	COOK	18	13
TC-09		CONTRACT NO. 62R67		
ILLINOIS FED. AID PROJECT				

TURN BAY ENTRANCE AT START OF LANE CLOSURE TAPER

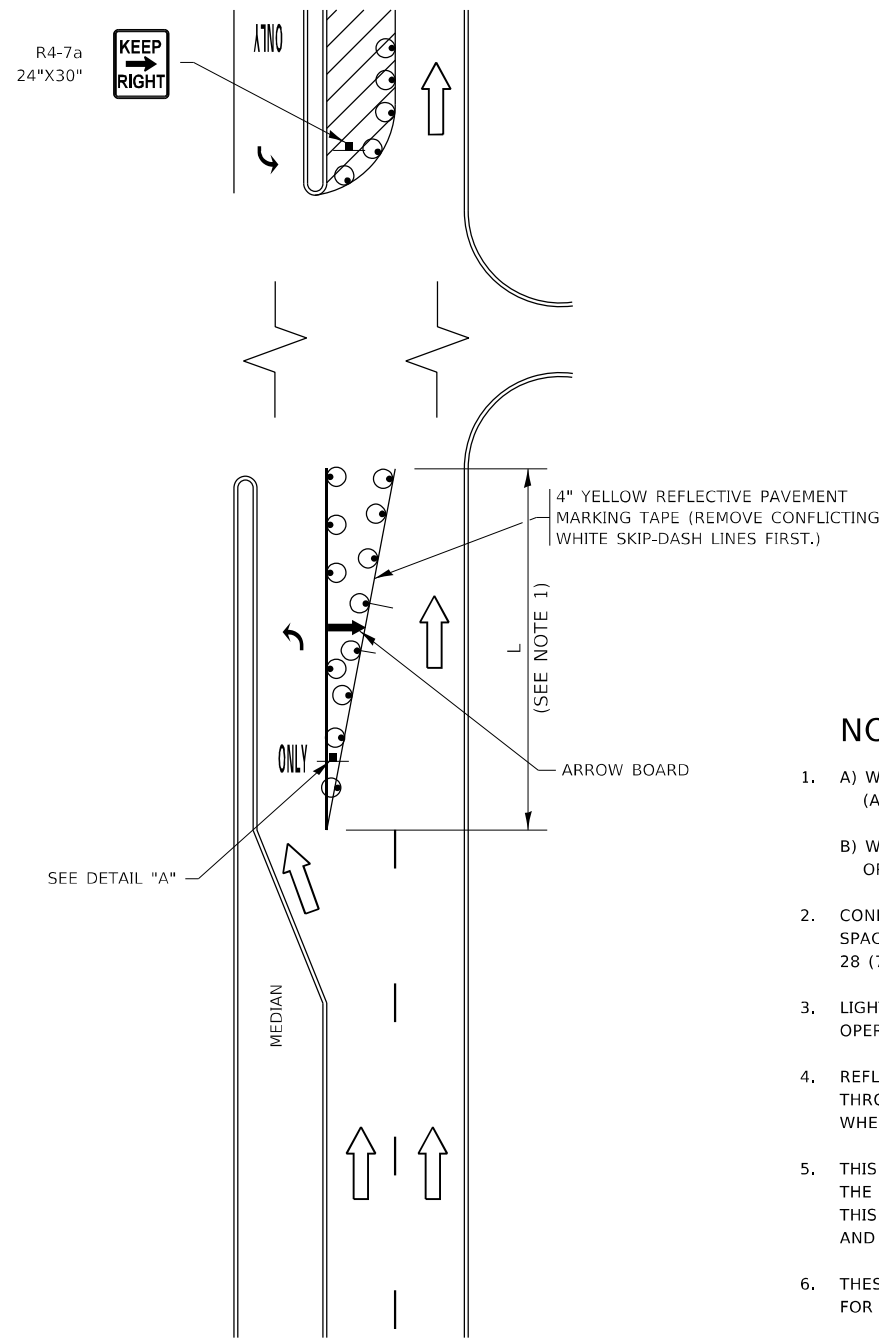


FIGURE 1

TURN BAY ENTRANCE WITHIN A LANE CLOSURE

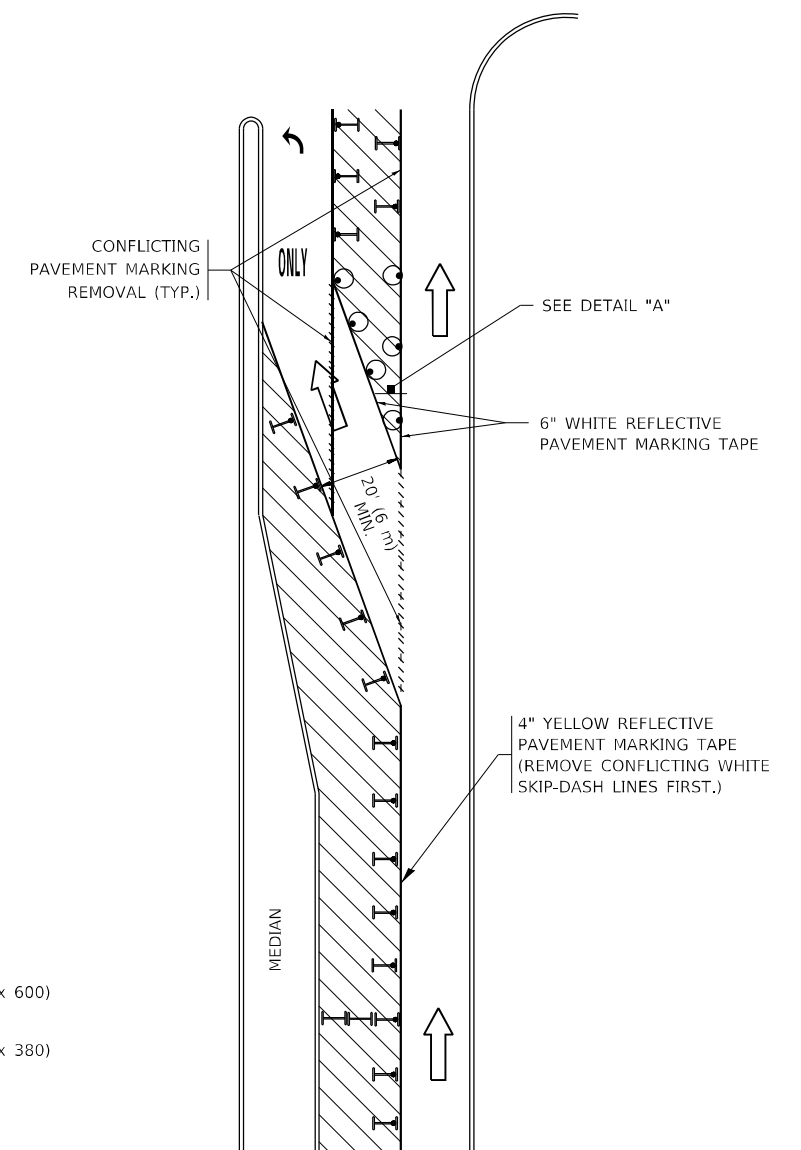


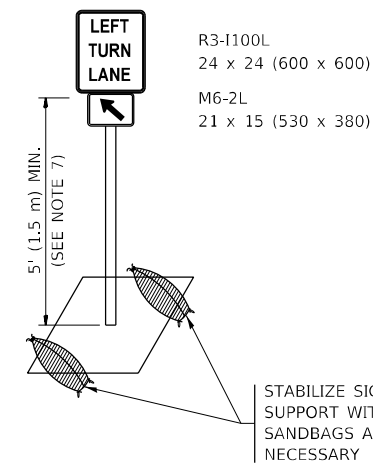
FIGURE 2

LEGEND

- WORK AREA
- LANE OPEN TO TRAFFIC
- ARROW BOARD
- TYPE I OR II BARRICADE OR DRUM WITH STEADY BURN LIGHT
- DRUM WITH STEADY BURN LIGHT
- SIGN ASSEMBLY
- TYPE I OR II CHECK BARRICADE WITH FLASHING LIGHT

NOTES:

1. A) WHEN "L" IS \leq THE STORAGE LENGTH OF THE TURN LANE (AS SHOWN IN FIG. 1), USE FIGURE 1.
B) WHEN "L" IS $>$ THE STORAGE LENGTH OF THE TURN LANE OR THE TURN LANE IS WITHIN THE LANE CLOSURE, USE FIGURE 2.
2. CONES MAY BE SUBSTITUTED FOR BARRICADES OR DRUMS AT HALF THE SPACING DURING DAY OPERATIONS. CONES SHALL BE A MINIMUM OF 28 (710) IN HEIGHT.
3. LIGHTS WILL NOT BE REQUIRED ON BARRICADES OR DRUMS FOR DAY OPERATIONS. ALL LIGHTS SHALL BE MONODIRECTIONAL.
4. REFLECTIVE TEMPORARY PAVEMENT MARKINGS SHALL BE PLACED THROUGHOUT THE BARRICADED AREAS OF EACH TURN BAY AS SHOWN WHERE THE CLOSURE TIME IS GREATER THAN FOURTEEN (14) DAYS.
5. THIS APPLICATION ALSO APPLIES WHEN WORK IS BEING PERFORMED IN THE RIGHT LANE(S) AND THE RIGHT TURN BAY IS TO REMAIN OPEN. UNDER THIS CONDITION, "RIGHT TURN LANE" R3-1100R 24 x 24 (600 x 600) AND M6-2R 21 x 15 (530 x 380) SHALL BE USED.
6. THESE CONTROLS SHALL SUPPLEMENT MAINLINE TRAFFIC CONTROL FOR LANE CLOSURES.
7. THE SIGNS SHALL BE MOUNTED ABOVE THE BARRICADES/DRUMS ON SEPARATE SIGN SUPPORTS THAT MEET NCHRP 350 OR MASH REQUIREMENTS.
8. TRAFFIC CONTROL AND PROTECTION AT TURN BAYS (TO REMAIN OPEN TO TRAFFIC) SHALL BE INCLUDED IN THE COST OF SPECIFIED TRAFFIC CONTROL STANDARDS OR ITEMS.



DETAIL A

All dimensions are in inches (millimeters) unless otherwise shown.

MODEL: Default FILE: \\na16f-pw-bentley.com\P\W\DOT\Documents\DOT Office\Dir\rdt_1\Project\117122\CADD\data\Design\BartSt.dgn

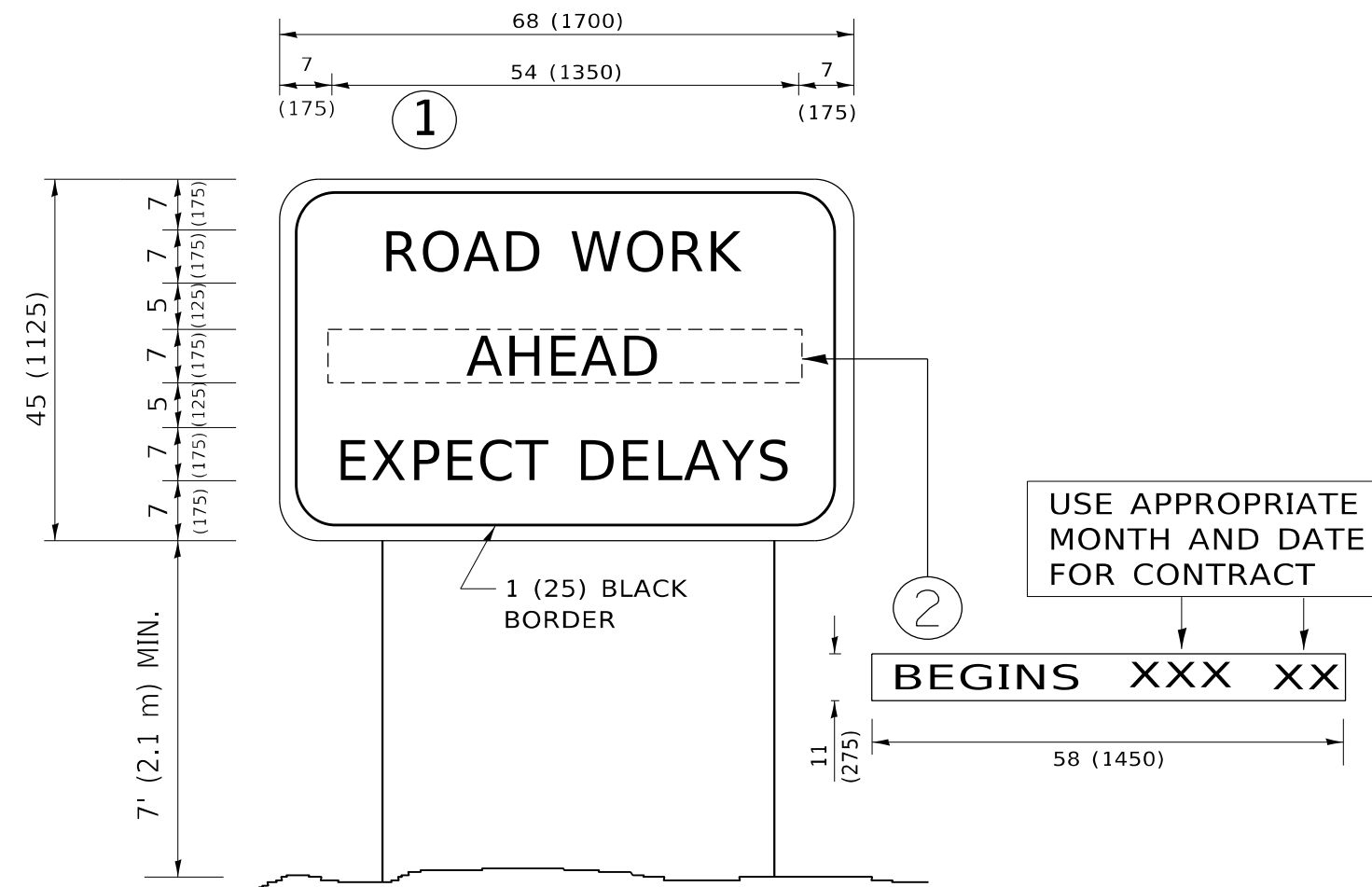
USER NAME = Ivan.Diaz	DESIGNED - T. RAMMACHER 09-08-94	REVISED - R. BORO 09-14-09
	DRAWN - A. HOUSEH 11-07-95	REVISED - A. SCHUETZE 07-01-13
PLOT SCALE = 100,0000' / in.	CHECKED - A. HOUSEH 10-12-96	REVISED - A. SCHUETZE 09-15-16
PLOT DATE = 8/30/2022	DATE - T. RAMMACHER 01-06-00	REVISED -

**STATE OF ILLINOIS
DEPARTMENT OF TRANSPORTATION**

**TRAFFIC CONTROL AND PROTECTION AT TURN BAYS
(TO REMAIN OPEN TO TRAFFIC)**

SCALE: NONE SHEET 1 OF 1 SHEETS STA. TO STA.

F.A.P. RTE.	SECTION	COUNTY	TOTAL SHEETS	SHEET NO.
395	FAP 395 22 SUB	COOK	18	15
TC-14		CONTRACT NO. 62R67		
ILLINOIS FED. AID PROJECT				



NOTES:

1. USE BLACK LETTERING ON ORANGE BACKGROUND.
2. ERECT SIGNS IN ADVANCE OF THE LOCATION FOR THE "ROAD CONSTRUCTION AHEAD" SIGN AT LOCATIONS AS DIRECTED BY THE ENGINEER.
3. ERECT SIGN ① WITH INSTALLED PANEL ② ONE WEEK PRIOR TO THE START OF CONSTRUCTION.
4. REMOVE PANEL ② SOON AFTER THE START OF CONSTRUCTION.
5. SEE SPECIAL PROVISION FOR "TEMPORARY INFORMATION SIGNING" FOR ADDITIONAL INFORMATION.
6. ONE SIGN ASSEMBLY EQUALS 25.70 SQ. FT. (2.3 SQ. M.)
7. SHALL BE PAID FOR AS TEMPORARY INFORMATION SIGNING.

ALL DIMENSIONS ARE IN INCHES (MILLIMETERS) UNLESS OTHERWISE SHOWN.

MODEL: Default
 FILE NAME: p:\project\paw_bentley.com\paw\dot\Documents\DOT Office\District 11\Project\117122\CADD\data\Design\BRTStg.dgn

USER NAME = Ivan.Diez	DESIGNED -	REVISED - R. MIRS 09-15-97
	DRAWN -	REVISED - R. MIRS 12-11-97
PLOT SCALE = 100,0000 ' / in.	CHECKED -	REVISED - T. RAMMACHER 02-02-99
PLOT DATE = 8/30/2022	DATE -	REVISED - C. JUCIUS 01-31-07

**STATE OF ILLINOIS
DEPARTMENT OF TRANSPORTATION**

**ARTERIAL ROAD
INFORMATION SIGN**

SCALE: NONE SHEET 1 OF 1 SHEETS STA. TO STA.

F.A.P. RTE.	SECTION	COUNTY	TOTAL SHEETS	SHEET NO.
395	FAP 395 22 SUB	COOK	18	18
TC-22		CONTRACT NO. 62R67		
ILLINOIS FED. AID PROJECT				