

STATE OF ILLINOIS  
DEPARTMENT OF TRANSPORTATION

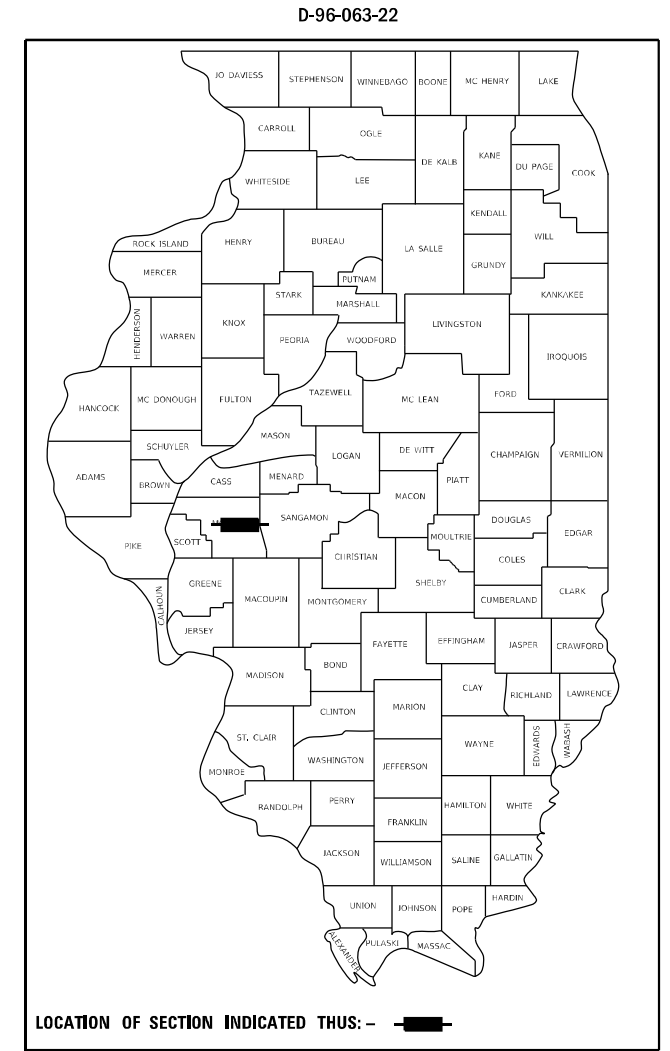
F.A.I. RTE.	SECTION	COUNTY	TOTAL SHEETS	SHEET NO.
72	(69-8B-1, 69-9HB-1, 3)BRR	MORGAN	9	1
		ILLINOIS	CONTRACT NO. 72027	

FOR INDEX OF SHEETS, SEE SHEET NO. 2

**PROPOSED  
CONTRACT MAINTENANCE**

**FAI ROUTE 72 (I-72)  
SECTION (69-8B-1, 69-9HB-1, 3)BRR  
PROJECT (STATE ONLY)  
BRIDGE BEARING REPLACEMENT  
MORGAN COUNTY**

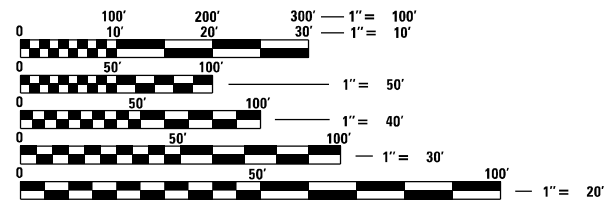
C-96-081-22



SN 069-0042 & 0043  
I-72 OVER MAUVAISE TERRE CR.  
0.8 MI SW OLD 36

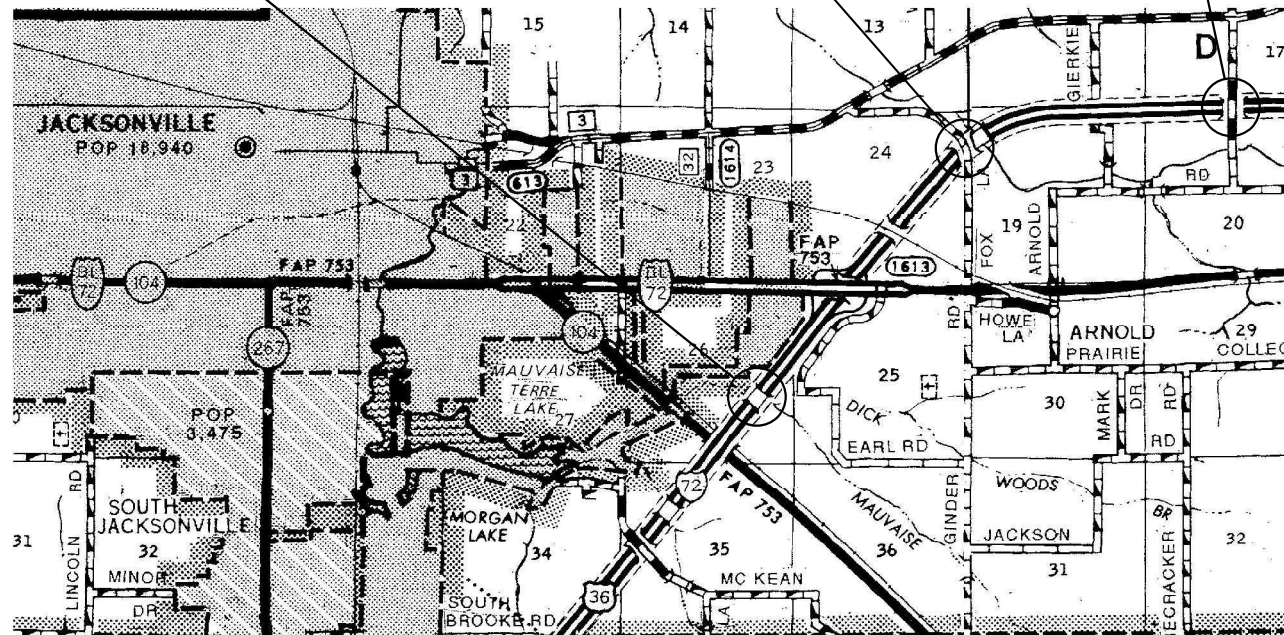
SN 069-0047  
TR 232 OVER I-72  
1.0 MI E OLD 36

SN 069-0050  
TR 284 OVER I-72  
2.5 MI E OLD 36



FULL SIZE PLANS HAVE BEEN PREPARED USING STANDARD ENGINEERING SCALES. REDUCED SIZED PLANS WILL NOT CONFORM TO STANDARD SCALES. IN MAKING MEASUREMENTS ON REDUCED PLANS, THE ABOVE SCALES MAY BE USED.

J.U.L.I.E.  
JOINT UTILITY LOCATION INFORMATION FOR EXCAVATION  
1-800-892-0123  
OR 811



BRIDGE MAINTENANCE ENGINEER: BRANDON DUDLEY - (217) 785-9290

GROSS LENGTH = XX FT. = XX MILE  
NET LENGTH = XX FT. = XX MILE

CONTRACT NO. 72027

STATE OF ILLINOIS  
DEPARTMENT OF TRANSPORTATION

SUBMITTED August 22, 2022

*[Signature]* REGIONAL ENGINEER

October 14, 2022

*[Signature]* ENGINEER OF DESIGN AND ENVIRONMENT

October 14, 2022

*[Signature]* DIRECTOR OF HIGHWAYS PROJECT IMPLEMENTATION

**PRINTED BY THE AUTHORITY  
OF THE STATE OF ILLINOIS**

INDEX OF SHEETS

- 1 COVER SHEET
- 2 INDEX, STANDARDS, SIGNATURES, & GENERAL NOTES
- 3 SUMMARY OF QUANTITIES
- 4-5 SN 069-0042 & 0043 BRIDGE PLANS
- 6-7 SN 069-0047 BRIDGE PLANS
- 8-9 SN 069-0050 BRIDGE PLANS

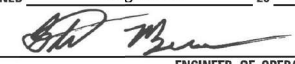
STANDARDS

- 000001-08
- 001006
- 701001-02
- 701006-05
- 701101-05
- 701106-02
- 701201-05
- 701400-11
- 701401-13
- 701901-08


GENERAL NOTES:

**STATE OF ILLINOIS  
DEPARTMENT OF TRANSPORTATION  
DIVISION OF HIGHWAYS  
DISTRICT 6**


---

EXAMINED August 22 20 22  
  
 ENGINEER OF OPERATIONS

---

EXAMINED August 22 20 22  
  
 ENGINEER OF PROJECT IMPLEMENTATION

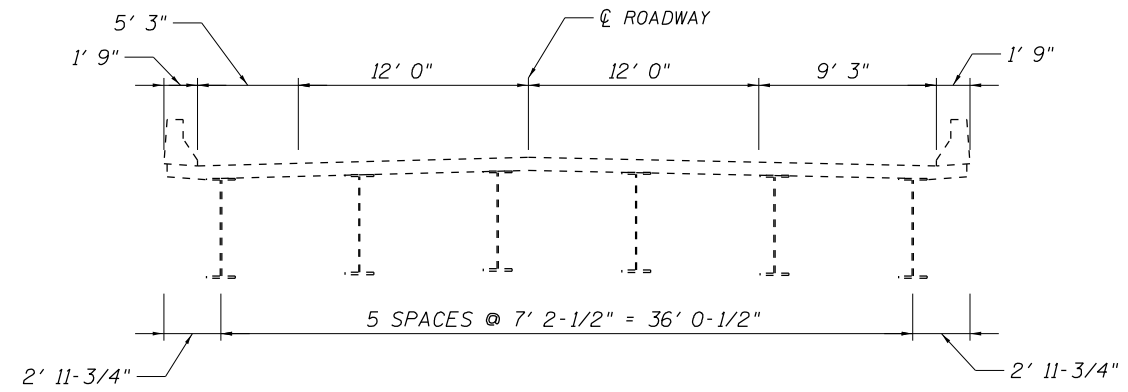
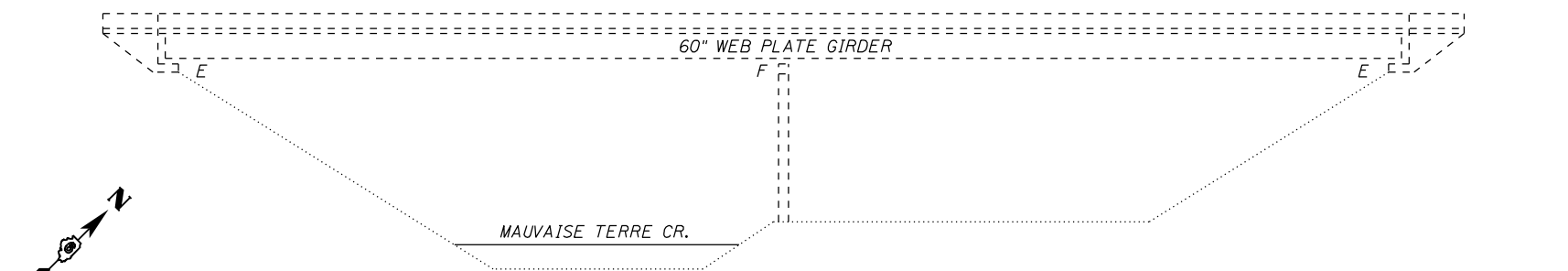
---

EXAMINED August 22 20 22  
  
 ENGINEER OF PROGRAM DEVELOPMENT

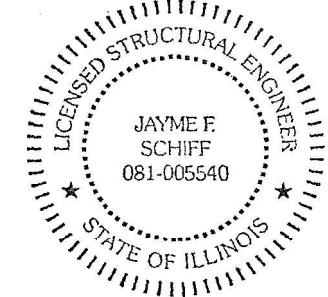
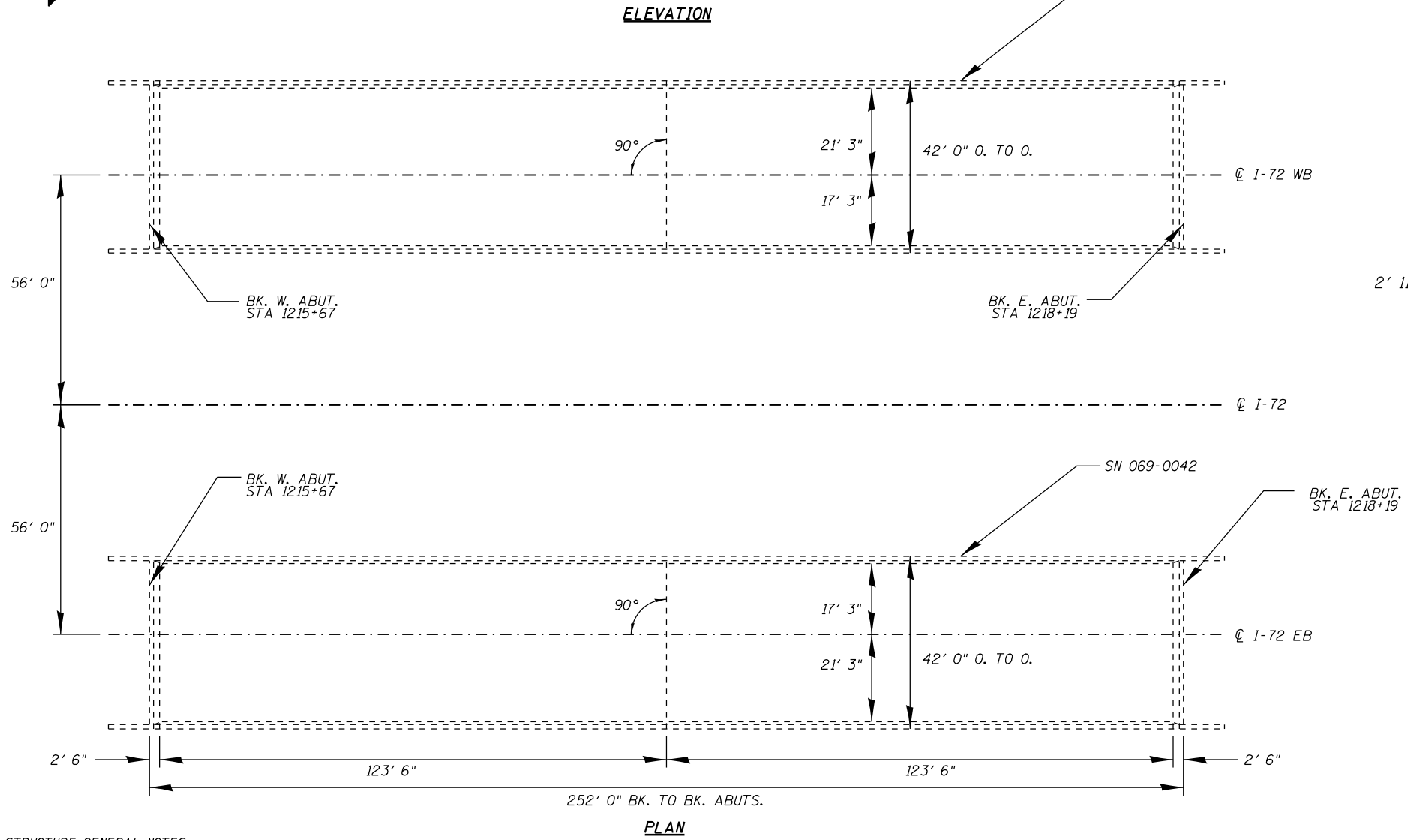
MODEL: Default  
 FILE NAME: S:\Bridges\BridgesPlans\_CAD\72027 - I72\_bea\figs\_at\_jacksonville\busheet.dgn

	USER NAME = Brandon.Dudley	DESIGNED -	REVISED -	<b>STATE OF ILLINOIS DEPARTMENT OF TRANSPORTATION</b>	<b>INDEX OF SHEETS, STANDARDS, GENERAL NOTES, &amp; SIGNATURES</b>	F.A.I. RTE.	SECTION	COUNTY	TOTAL SHEETS	SHEET NO.	
		DRAWN -	REVISED -			72	(69-8B-1, 69-9HB-1, 3)BRR	MORGAN	9	2	
	PLOT SCALE = 100,0000' / in.	CHECKED -	REVISED -			CONTRACT NO. 72027					
	PLOT DATE = 8/22/2022	DATE -	REVISED -			ILLINOIS FED. AID PROJECT					
					SCALE:	SHEET	OF	SHEETS	STA.	TO STA.	





**DECK CROSS SECTION  
(LOOKING IN DIRECTION OF TRAFFIC)**



**EXPIRES 11-30-2022**

*Jayme F. Schiff*

**STRUCTURE GENERAL NOTES:**

PLAN DIMENSIONS AND DETAILS RELATIVE TO EXISTING PLANS ARE SUBJECT TO NOMINAL CONSTRUCTION VARIATIONS. THE CONTRACTOR SHALL FIELD VERIFY EXISTING DIMENSIONS AND DETAILS AFFECTING NEW CONSTRUCTION AND MAKE NECESSARY APPROVED ADJUSTMENTS PRIOR TO CONSTRUCTION OR ORDERING OF MATERIALS. SUCH VARIATIONS SHALL NOT BE CAUSE FOR ADDITIONAL COMPENSATION FOR A CHANGE IN THE SCOPE OF WORK, HOWEVER, THE CONTRACTOR WILL BE PAID FOR THE QUANTITY ACTUALLY FURNISHED AT THE UNIT PRICE BID FOR THE WORK.

ALL STRUCTURAL STEEL SHALL BE AASHTO M270 GRADE 36 UNLESS OTHERWISE NOTED.

EXISTING STRUCTURAL STEEL THAT WILL BE IN CONTACT WITH NEW STRUCTURAL STEEL SHALL BE CLEANED AND PAINTED PRIOR TO ERECTION AS REQUIRED BY THE SPECIAL PROVISION "CLEANING AND PAINTING CONTACT SURFACE AREAS OF EXISTING STEEL STRUCTURES".

ALL NEW STRUCTURAL STEEL AND BEARING ASSEMBLIES SHALL BE HOT-DIP GALVANIZED. SEE SPECIAL PROVISIONS FOR "HOT DIP GALVANIZING FOR STRUCTURAL STEEL".

THE CONTRACTOR SHALL CORRECT ELEVATION DIFFERENCES IN THE PROFILE GRADE ACROSS THE EXISTING EXPANSION JOINTS AT THE ENDS OF THE DECK. THIS SHALL BE ACCOMPLISHED BY ADJUSTING THE VERTICAL DIMENSION OF THE PROPOSED STEEL BEARING EXTENSIONS. THE CONTRACTOR SHALL FIELD VERIFY THE EXISTING DIMENSIONS AND PROPOSE ALL VERTICAL ADJUSTMENTS TO THE ENGINEER PRIOR TO ORDERING MATERIALS. THE ALLOWABLE ELEVATION TOLERANCES BETWEEN THE TWO SIDES OF THE EXPANSION JOINTS SHALL BE ±1/4". RECORDING ACCURATE MEASUREMENTS AND ORDERING PROPERLY SIZED BEARING EXTENSIONS SHALL BE THE SOLE RESPONSIBILITY OF THE CONTRACTOR.

**TOTAL BILL OF MATERIAL (SN 069-0042 & 0043)**

ITEM	UNIT	QUANTITY
Elastomeric Bearing Assembly, Type I	Each	24
Jack and Remove Existing Bearings	Each	24
Furnishing and Erecting Structural Steel	Pound	4820
Anchor Bolts, 1" φ	Each	48

MODEL: Default  
FILE NAME: S:\Addresses\Bridges\Bridges\_CAD\72027\_172\_bearing.dgn at jacksonvilleplanning.dgn

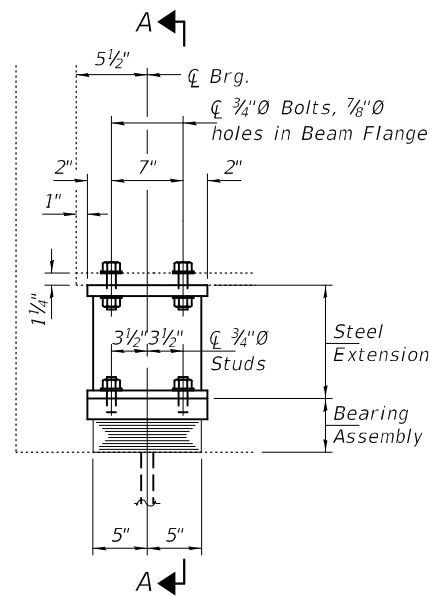
USER NAME = Brandon.Dudley	DESIGNED - BRANDON DUDLEY	REVISED -
	DRAWN - BRANDON DUDLEY	REVISED -
PLOT SCALE = 100,0000' / in.	CHECKED -	REVISED -
PLOT DATE = 9/26/2022	DATE - 6/14/2022	REVISED -

**STATE OF ILLINOIS  
DEPARTMENT OF TRANSPORTATION**

**BRIDGE PLAN & ELEVATION  
SN 069-0042 & 0043**

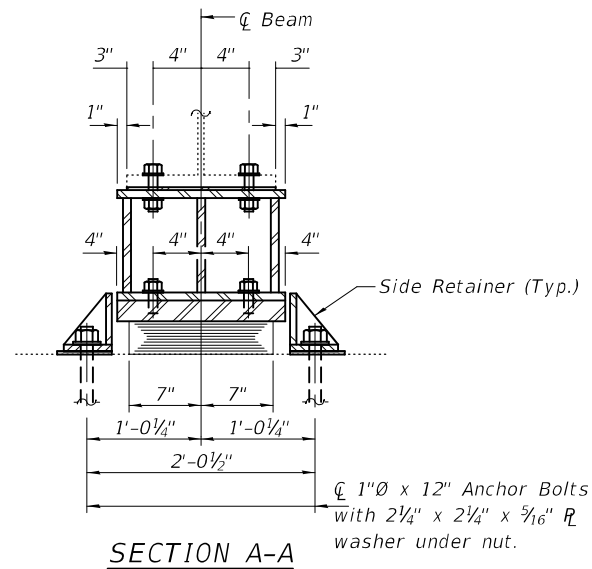
SCALE: SHEET 1 OF 2 SHEETS STA. TO STA.

F.A.I. RTE.	SECTION	COUNTY	TOTAL SHEETS	SHEET NO.
72	(69-8B-1, 69-9HB-1, 3)BRR	MORGAN	9	4
ILLINOIS FED. AID PROJECT			CONTRACT NO. 72027	



ELEVATION AT BOTH ABUTMENT'S

TYPE I ELASTOMERIC EXP. BRG.



SECTION A-A

BEAM REACTIONS

R <sub>D</sub>	(K)	65.5
R <sub>L</sub>	(K)	42.7
Imp.	(K)	8.6
R (Total)	(K)	116.8

Notes:

Diaphragm removal and reinstallation may be required to facilitate drilling holes. Cost included with Furnishing and Erecting Structural Steel.

New steel extensions, shim plates and connection bolts are included with Furnishing and Erecting Structural Steel.

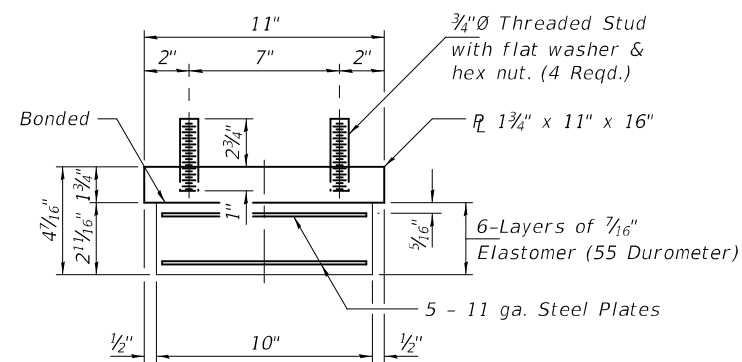
Prior to ordering any material, the Contractor shall verify in the field all bearing height and shim thickness dimensions. Adjustment must account for deck heave due to pack rust (if present).

Min. jack capacity = 70 Tons.

Anchor bolts shall be ASTM F1554 all-thread (or an Engineer-approved alternate material) of the grade(s) and diameter(s) specified. ASTM A307 Grade C anchor bolts may be used in lieu of ASTM F1554 Grade 36 (F<sub>y</sub>=36ksi). The corresponding specified grade of AASHTO M314 anchor bolts may be used in lieu of ASTM F1554.

Drilled and set anchor bolts shall be installed according to Article 521.06 of the Standard Specifications.

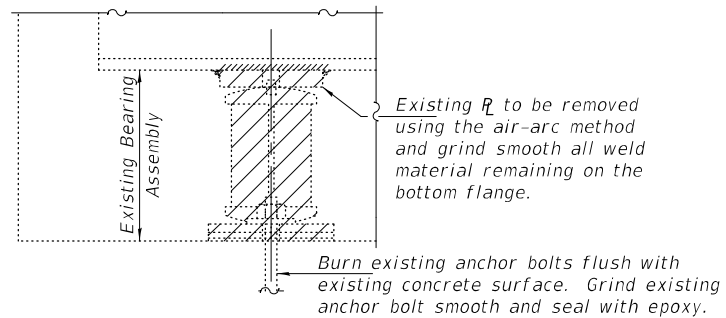
Cost of Side retainers and Stainless Steel plates shall be included in the cost of Elastomeric Bearing Assembly, Type I.



BEARING ASSEMBLY

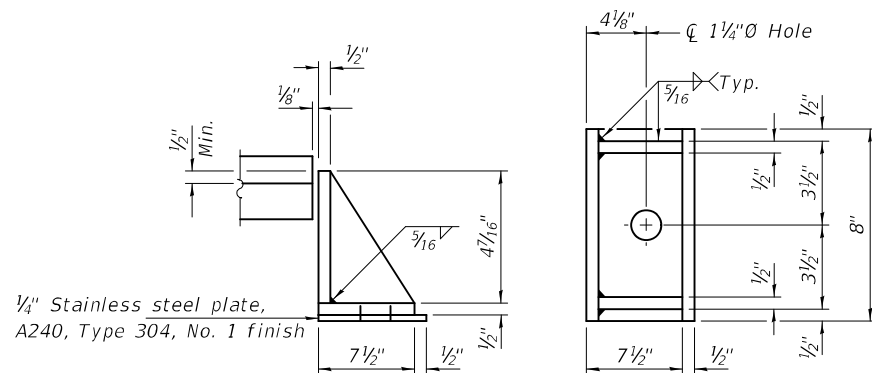
Note:

Shim plates shall not be placed under Bearing Assembly.



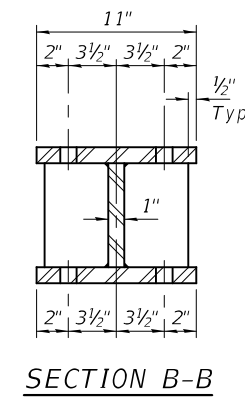
EXISTING BEARING REMOVAL DETAIL

Cost included with Jack and Remove Existing Bearings.

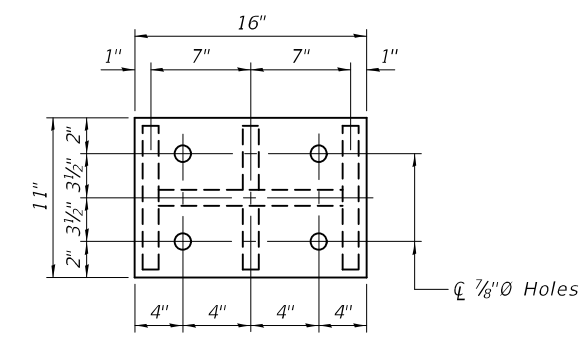


SIDE RETAINER

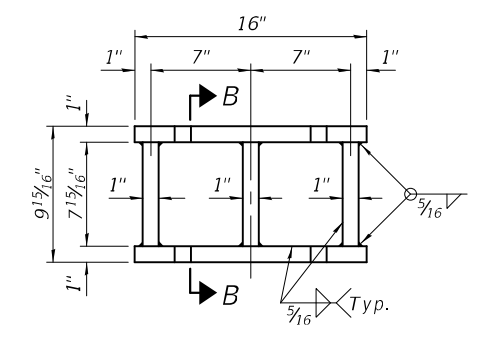
Equivalent rolled angle with stiffeners will be allowed in lieu of welded plates.



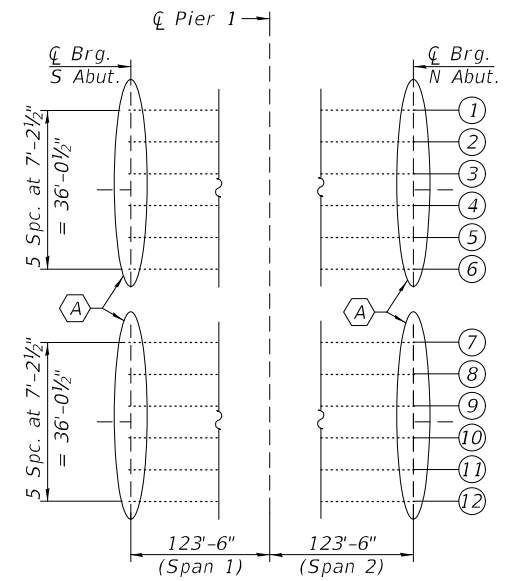
SECTION B-B



PLAN TOP AND BOTTOM PLATE



STEEL EXTENSION DETAIL

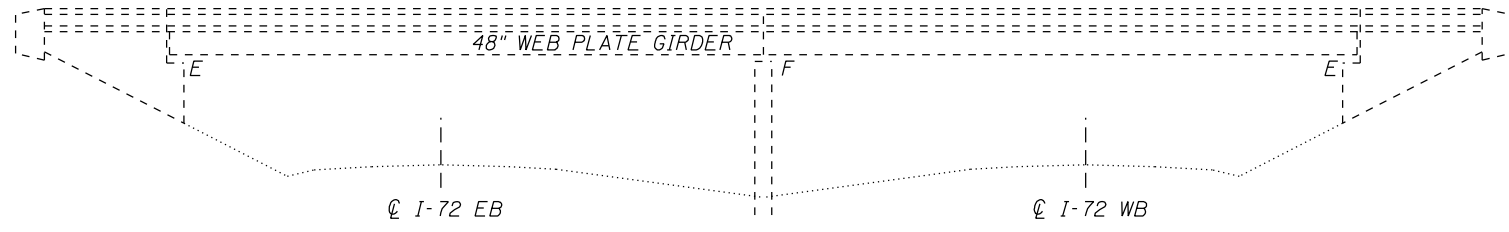


PARTIAL FRAMING PLAN

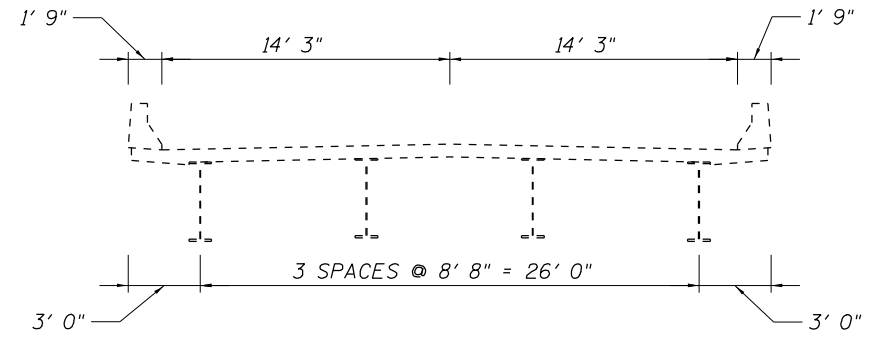
(A) - Bearing Removal and Replacement.

BILL OF MATERIAL - ALL ABUTS.

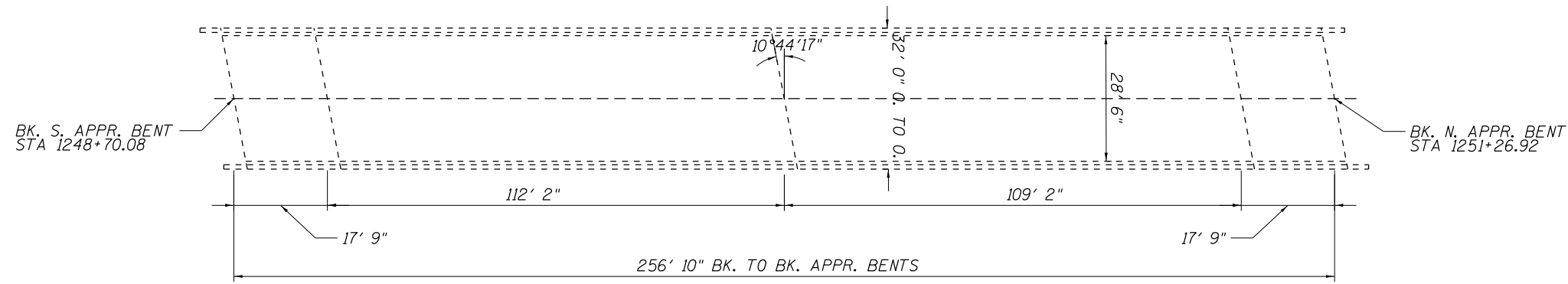
Item	Unit	Total
Elastomeric Bearing Assembly, Type I	Each	24
Jack and Remove Existing Bearings	Each	24
Furnishing and Erecting Structural Steel	Pound	4820
Anchor Bolts, 1"Ø	Each	48



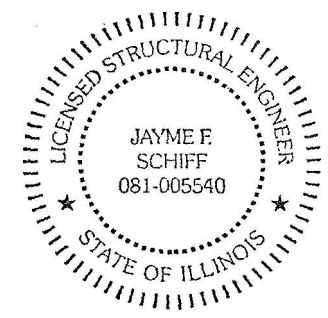
**ELEVATION**



**DECK CROSS SECTION**



**PLAN**



EXPIRES 11-30-2022

*Jayme F. Schiff*

**STRUCTURE GENERAL NOTES:**

PLAN DIMENSIONS AND DETAILS RELATIVE TO EXISTING PLANS ARE SUBJECT TO NOMINAL CONSTRUCTION VARIATIONS. THE CONTRACTOR SHALL FIELD VERIFY EXISTING DIMENSIONS AND DETAILS AFFECTING NEW CONSTRUCTION AND MAKE NECESSARY APPROVED ADJUSTMENTS PRIOR TO CONSTRUCTION OR ORDERING OF MATERIALS. SUCH VARIATIONS SHALL NOT BE CAUSE FOR ADDITIONAL COMPENSATION FOR A CHANGE IN THE SCOPE OF WORK, HOWEVER, THE CONTRACTOR WILL BE PAID FOR THE QUANTITY ACTUALLY FURNISHED AT THE UNIT PRICE BID FOR THE WORK.

ALL STRUCTURAL STEEL SHALL BE AASHTO M270 GRADE 36 UNLESS OTHERWISE NOTED.

EXISTING STRUCTURAL STEEL THAT WILL BE IN CONTACT WITH NEW STRUCTURAL STEEL SHALL BE CLEANED AND PAINTED PRIOR TO ERECTION AS REQUIRED BY THE SPECIAL PROVISION "CLEANING AND PAINTING CONTACT SURFACE AREAS OF EXISTING STEEL STRUCTURES".

ALL NEW STRUCTURAL STEEL AND BEARING ASSEMBLIES SHALL BE HOT-DIP GALVANIZED. SEE SPECIAL PROVISIONS FOR "HOT DIP GALVANIZING FOR STRUCTURAL STEEL".

THE CONTRACTOR SHALL CORRECT ELEVATION DIFFERENCES IN THE PROFILE GRADE ACROSS THE EXISTING EXPANSION JOINTS AT THE ENDS OF THE DECK. THIS SHALL BE ACCOMPLISHED BY ADJUSTING THE VERTICAL DIMENSION OF THE PROPOSED STEEL BEARING EXTENSIONS. THE CONTRACTOR SHALL FIELD VERIFY THE EXISTING DIMENSIONS AND PROPOSE ALL VERTICAL ADJUSTMENTS TO THE ENGINEER PRIOR TO ORDERING MATERIALS. THE ALLOWABLE ELEVATION TOLERANCES BETWEEN THE TWO SIDES OF THE EXPANSION JOINTS SHALL BE ±1/4". RECORDING ACCURATE MEASUREMENTS AND ORDERING PROPERLY SIZED BEARING EXTENSIONS SHALL BE THE SOLE RESPONSIBILITY OF THE CONTRACTOR.

**TOTAL BILL OF MATERIAL (SN 069-0047)**

ITEM	UNIT	QUANTITY
Elastomeric Bearing Assembly, Type I	Each	8
Jack and Remove Existing Bearings	Each	8
Furnishing and Erecting Structural Steel	Pound	1750
Anchor Bolts, 1" φ	Each	16

MODEL: D:\p111... FILE NAME: S:\bridges\Bridges\as\_CAD\72027...-172\_bearing.dwg at: jacksonville\jpl\bruce.dwg

USER NAME = Brandon.Dudley	DESIGNED - BRANDON DUDLEY	REVISED -
	DRAWN - BRANDON DUDLEY	REVISED -
PLOT SCALE = 100,0000' / in.	CHECKED -	REVISED -
PLOT DATE = 9/26/2022	DATE - 6/14/2022	REVISED -

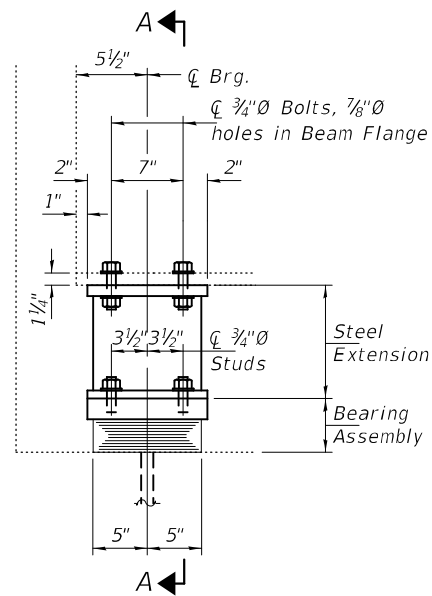
**STATE OF ILLINOIS  
DEPARTMENT OF TRANSPORTATION**

**BRIDGE PLAN & ELEVATION  
SN 069-0047**

SCALE: SHEET 1 OF 2 SHEETS STA. TO STA.

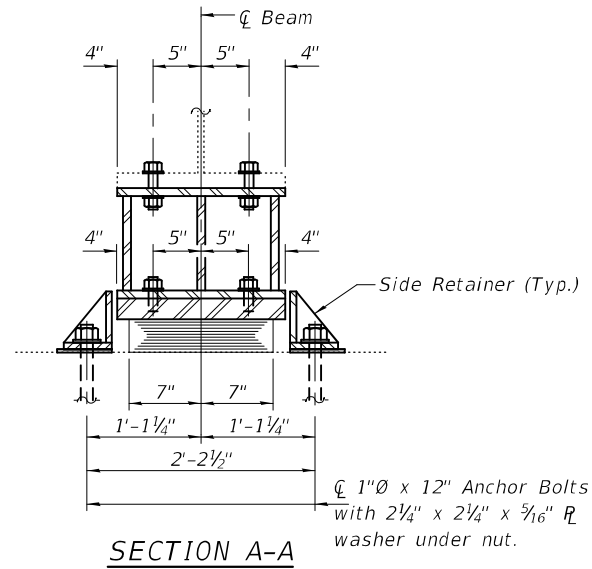
F.A.I. RTE.	SECTION	COUNTY	TOTAL SHEETS	SHEET NO.
72	(69-8B-1, 69-9HB-1, 3)BRR	MORGAN	9	6
CONTRACT NO. 72027			ILLINOIS FED. AID PROJECT	





ELEVATION AT BOTH ABUTMENT'S

TYPE I ELASTOMERIC EXP. BRG.



SECTION A-A

BEAM REACTIONS

	S. Abut.	N. Abut.
R <sub>D</sub>	(K) 64.5	61.1
R <sub>L</sub>	(K) 38.3	38.1
Imp.	(K) 8.3	8.0
R (Total)	(K) 110.8	107.2

Notes:

Diaphragm removal and reinstallation may be required to facilitate drilling holes. Cost included with Furnishing and Erecting Structural Steel.

New steel extensions, shim plates and connection bolts are included with Furnishing and Erecting Structural Steel.

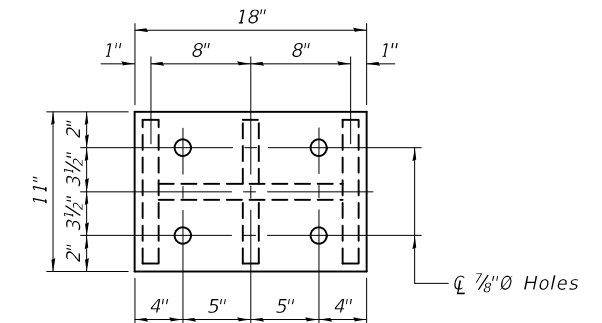
Prior to ordering any material, the Contractor shall verify in the field all bearing height and shim thickness dimensions. Adjustment must account for deck heave due to pack rust (if present).

Min. jack capacity = 70 Tons.

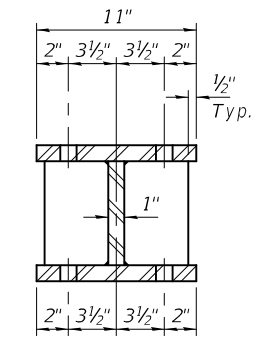
Anchor bolts shall be ASTM F1554 all-thread (or an Engineer-approved alternate material) of the grade(s) and diameter(s) specified. ASTM A307 Grade C anchor bolts may be used in lieu of ASTM F1554 Grade 36 (F<sub>y</sub>=36ksi). The corresponding specified grade of AASHTO M314 anchor bolts may be used in lieu of ASTM F1554.

Drilled and set anchor bolts shall be installed according to Article 521.06 of the Standard Specifications.

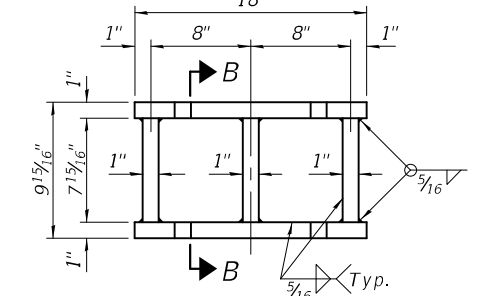
Cost of Side retainers and Stainless Steel plates shall be included in the cost of Elastomeric Bearing Assembly, Type I.



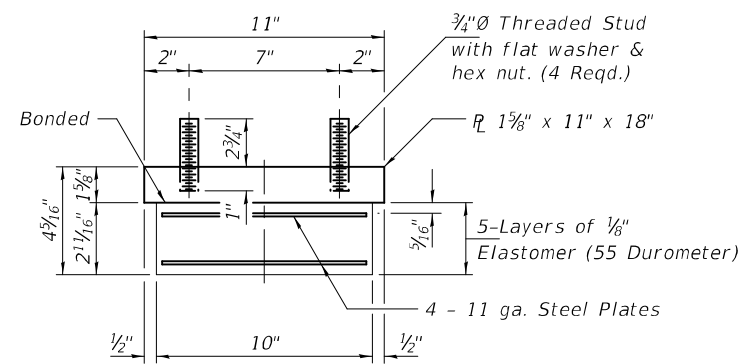
PLAN TOP AND BOTTOM PLATE



SECTION B-B



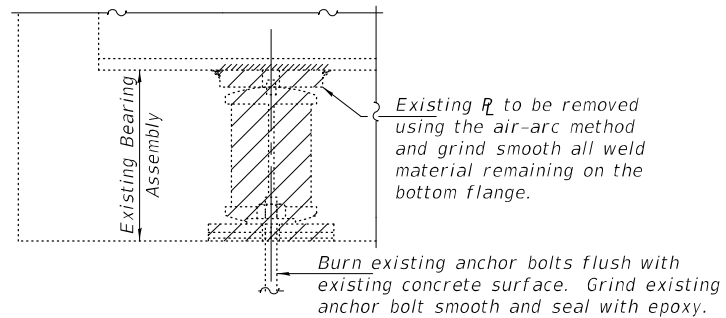
STEEL EXTENSION DETAIL



BEARING ASSEMBLY

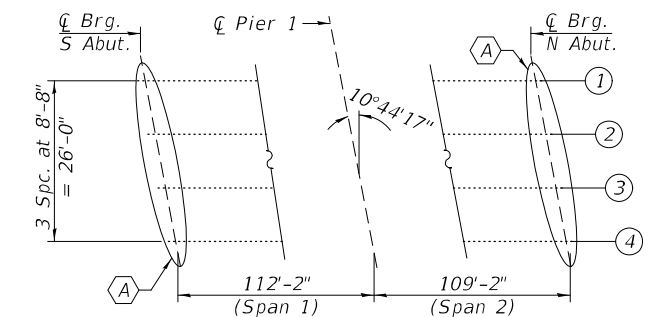
Note:

Shim plates shall not be placed under Bearing Assembly.



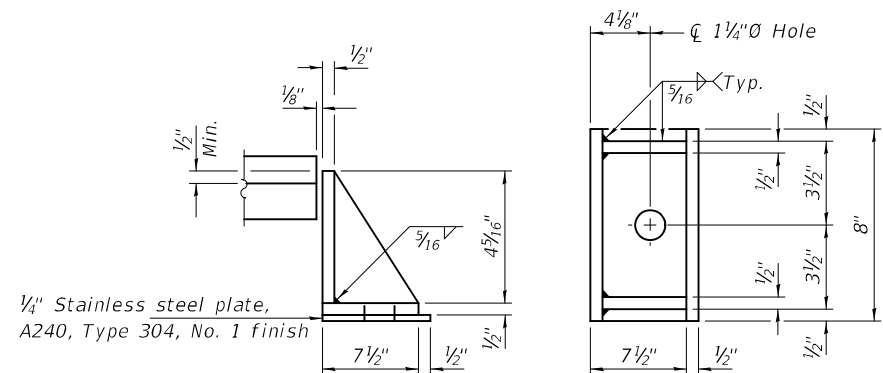
EXISTING BEARING REMOVAL DETAIL

Cost included with Jack and Remove Existing Bearings.



PARTIAL FRAMING PLAN

A - Bearing Removal and Replacement.



SIDE RETAINER

Equivalent rolled angle with stiffeners will be allowed in lieu of welded plates.

BILL OF MATERIAL - BOTH ABUTS.

Item	Unit	Total
Elastomeric Bearing Assembly, Type I	Each	8
Jack and Remove Existing Bearings	Each	8
Furnishing and Erecting Structural Steel	Pound	1750
Anchor Bolts, 1"Ø	Each	16

DESIGNED - Adrian T. Halloway  
 CHECKED - Chi-Cheung Chau  
 DRAWN - Venkat Ramana Reddy  
 CHECKED - ATH CCC

PASSED

James F. [Signature]  
 ENGINEER OF BRIDGES AND STRUCTURES

DATE - SEPTEMBER 26, 2022

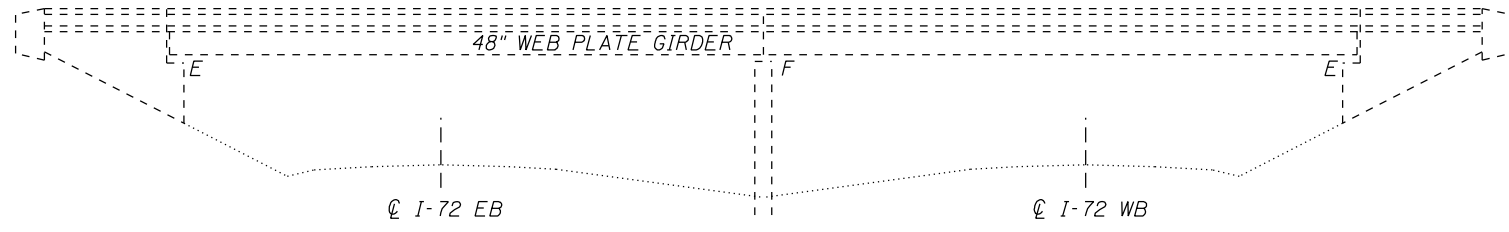
REVISED -  
 REVISED -

STATE OF ILLINOIS  
 DEPARTMENT OF TRANSPORTATION

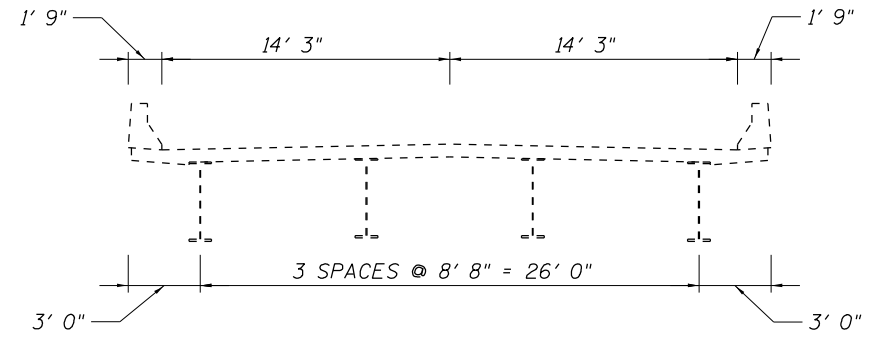
BEARING DETAILS - BOTH ABUTMENTS  
 T.R. 232 OVER FAI 72  
 SN 069-0047

SHEET NO. 1 OF 1 SHEETS

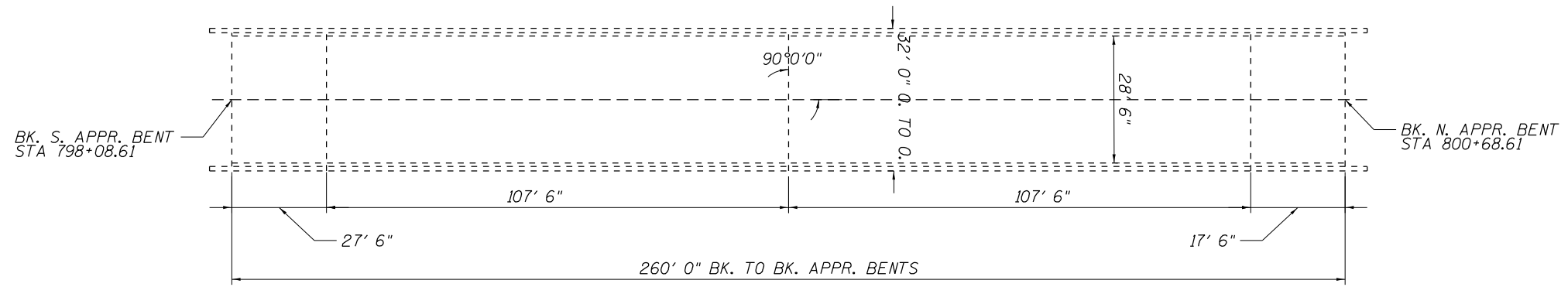
F.A.I. RTE.	SECTION	COUNTY	TOTAL SHEETS	SHEET NO.
72	(69-9B1DR, 69-9HB-1, 3)BRR	MORGAN	9	7
CONTRACT NO. 72027				
ILLINOIS FED. AID PROJECT				



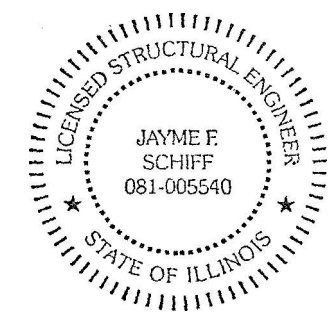
**ELEVATION**



**DECK CROSS SECTION**



**PLAN**



EXPIRES 11-30-2022

*Jayme F. Schiff*

**STRUCTURE GENERAL NOTES:**

PLAN DIMENSIONS AND DETAILS RELATIVE TO EXISTING PLANS ARE SUBJECT TO NOMINAL CONSTRUCTION VARIATIONS. THE CONTRACTOR SHALL FIELD VERIFY EXISTING DIMENSIONS AND DETAILS AFFECTING NEW CONSTRUCTION AND MAKE NECESSARY APPROVED ADJUSTMENTS PRIOR TO CONSTRUCTION OR ORDERING OF MATERIALS. SUCH VARIATIONS SHALL NOT BE CAUSE FOR ADDITIONAL COMPENSATION FOR A CHANGE IN THE SCOPE OF WORK, HOWEVER, THE CONTRACTOR WILL BE PAID FOR THE QUANTITY ACTUALLY FURNISHED AT THE UNIT PRICE BID FOR THE WORK.

ALL STRUCTURAL STEEL SHALL BE AASHTO M270 GRADE 36 UNLESS OTHERWISE NOTED.

EXISTING STRUCTURAL STEEL THAT WILL BE IN CONTACT WITH NEW STRUCTURAL STEEL SHALL BE CLEANED AND PAINTED PRIOR TO ERECTION AS REQUIRED BY THE SPECIAL PROVISION "CLEANING AND PAINTING CONTACT SURFACE AREAS OF EXISTING STEEL STRUCTURES".

ALL NEW STRUCTURAL STEEL AND BEARING ASSEMBLIES SHALL BE HOT-DIP GALVANIZED. SEE SPECIAL PROVISIONS FOR "HOT DIP GALVANIZING FOR STRUCTURAL STEEL".

THE CONTRACTOR SHALL CORRECT ELEVATION DIFFERENCES IN THE PROFILE GRADE ACROSS THE EXISTING EXPANSION JOINTS AT THE ENDS OF THE DECK. THIS SHALL BE ACCOMPLISHED BY ADJUSTING THE VERTICAL DIMENSION OF THE PROPOSED STEEL BEARING EXTENSIONS. THE CONTRACTOR SHALL FIELD VERIFY THE EXISTING DIMENSIONS AND PROPOSE ALL VERTICAL ADJUSTMENTS TO THE ENGINEER PRIOR TO ORDERING MATERIALS. THE ALLOWABLE ELEVATION TOLERANCES BETWEEN THE TWO SIDES OF THE EXPANSION JOINTS SHALL BE ±1/4". RECORDING ACCURATE MEASUREMENTS AND ORDERING PROPERLY SIZED BEARING EXTENSIONS SHALL BE THE SOLE RESPONSIBILITY OF THE CONTRACTOR.

**TOTAL BILL OF MATERIAL (SN 069-0050)**

ITEM	UNIT	QUANTITY
Elastomeric Bearing Assembly, Type I	Each	8
Jack and Remove Existing Bearings	Each	8
Furnishing and Erecting Structural Steel	Pound	1580
Anchor Bolts, 1" φ	Each	16

MODEL: D:\p111... FILE NAME: S:\bridges\Bridges\plan\_elev.dwg... 172 bearings at jacksonville\plan\_elev.dwg

USER NAME = Brandon.Dudley	DESIGNED - BRANDON DUDLEY	REVISED -
	DRAWN - BRANDON DUDLEY	REVISED -
PLOT SCALE = 100,0000' / in.	CHECKED -	REVISED -
PLOT DATE = 9/26/2022	DATE - 6/14/2022	REVISED -

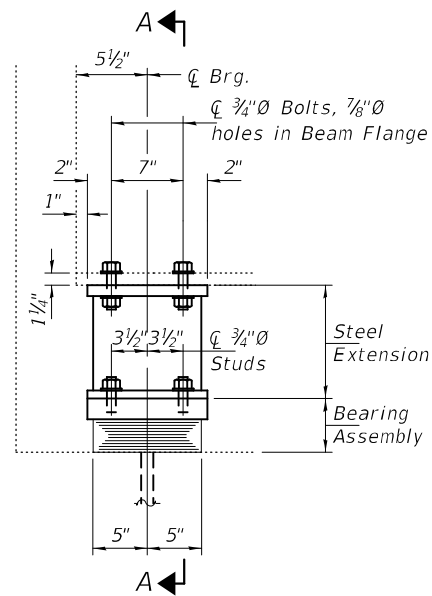
**STATE OF ILLINOIS  
DEPARTMENT OF TRANSPORTATION**

**BRIDGE PLAN & ELEVATION  
SN 069-0050**

SCALE: SHEET 1 OF 2 SHEETS STA. TO STA.

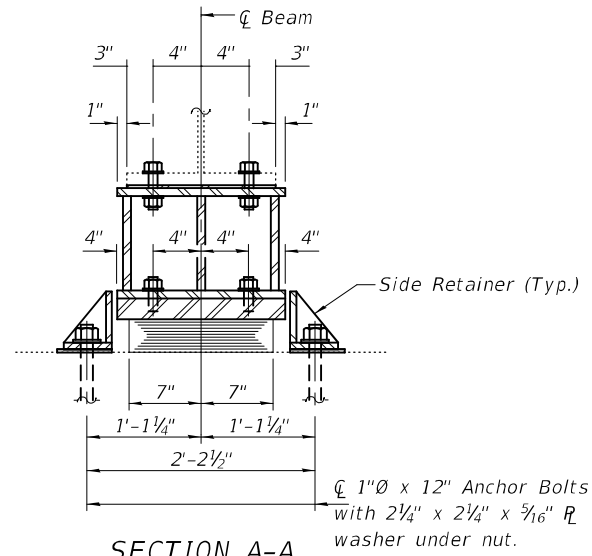
F.A.I. RTE.	SECTION	COUNTY	TOTAL SHEETS	SHEET NO.
72	(69-8B-1, 69-9HB-1, 3)BRR	MORGAN	9	8
ILLINOIS FED. AID PROJECT			CONTRACT NO. 72027	





ELEVATION AT BOTH ABUTMENT'S

TYPE I ELASTOMERIC EXP. BRG.



SECTION A-A

1" x 12" Anchor Bolts with 2 1/4" x 2 1/4" x 5/16" R washer under nut.

BEAM REACTIONS

R <sub>D</sub>	(K)	61.9
R <sub>L</sub>	(K)	38.1
Imp.	(K)	8.4
R (Total)	(K)	108.4

Notes:

Diaphragm removal and reinstallation may be required to facilitate drilling holes. Cost included with Furnishing and Erecting Structural Steel.

New steel extensions, shim plates and connection bolts are included with Furnishing and Erecting Structural Steel.

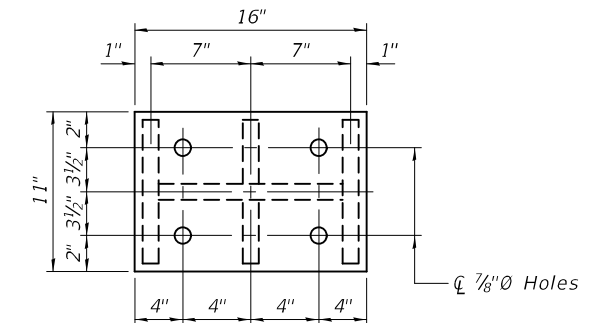
Prior to ordering any material, the Contractor shall verify in the field all bearing height and shim thickness dimensions. Adjustment must account for deck heave due to pack rust (if present).

Min. jack capacity = 65 Tons.

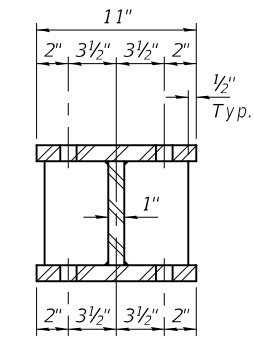
Anchor bolts shall be ASTM F1554 all-thread (or an Engineer-approved alternate material) of the grade(s) and diameter(s) specified. ASTM A307 Grade C anchor bolts may be used in lieu of ASTM F1554 Grade 36 (F<sub>y</sub>=36ksi). The corresponding specified grade of AASHTO M314 anchor bolts may be used in lieu of ASTM F1554.

Drilled and set anchor bolts shall be installed according to Article 521.06 of the Standard Specifications.

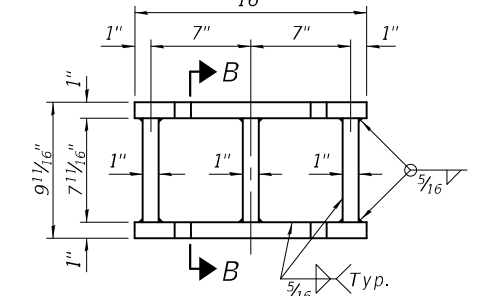
Cost of Side retainers and Stainless Steel plates shall be included in the cost of Elastomeric Bearing Assembly, Type I.



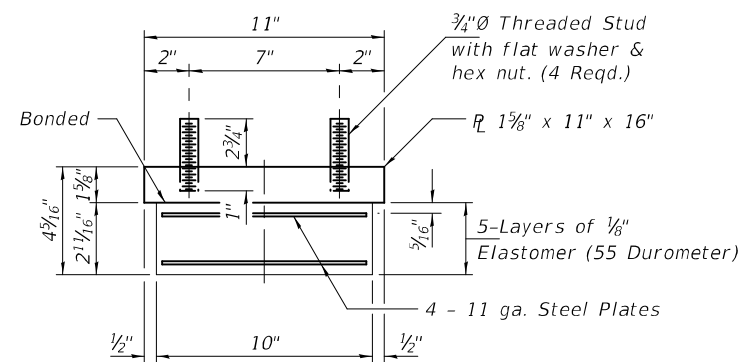
PLAN TOP AND BOTTOM PLATE



SECTION B-B



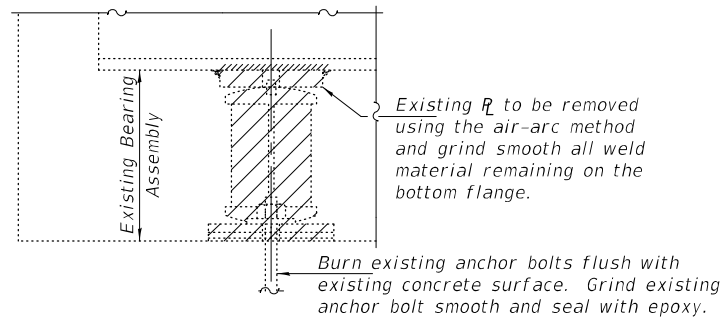
STEEL EXTENSION DETAIL



BEARING ASSEMBLY

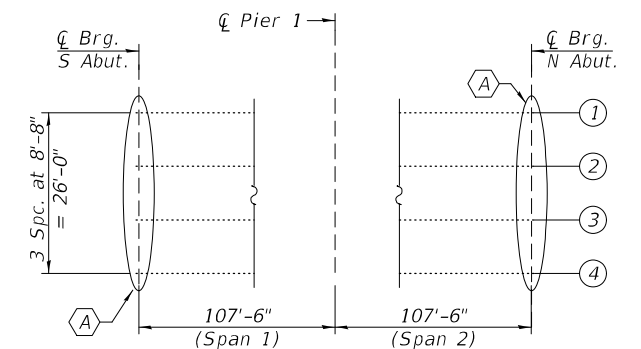
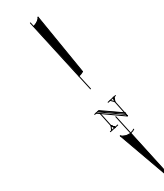
Note:

Shim plates shall not be placed under Bearing Assembly.



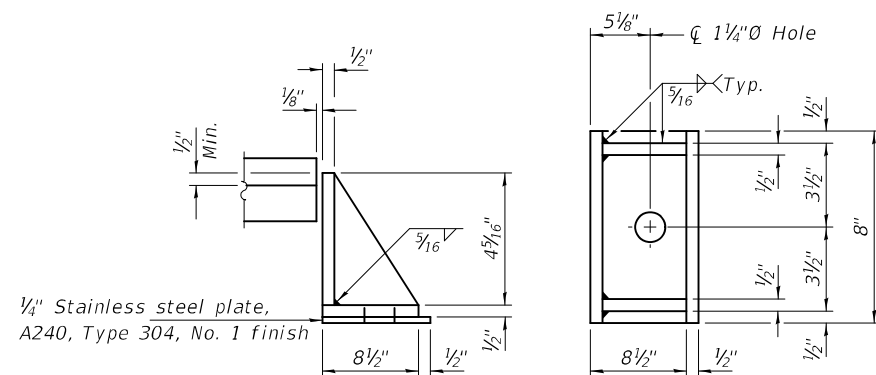
EXISTING BEARING REMOVAL DETAIL

Cost included with Jack and Remove Existing Bearings.



PARTIAL FRAMING PLAN

(A) - Bearing Removal and Replacement.



SIDE RETAINER

Equivalent rolled angle with stiffeners will be allowed in lieu of welded plates.

BILL OF MATERIAL - BOTH ABUTS.

Item	Unit	Total
Elastomeric Bearing Assembly, Type I	Each	8
Jack and Remove Existing Bearings	Each	8
Furnishing and Erecting Structural Steel	Pound	1580
Anchor Bolts, 1"Ø	Each	16

DESIGNED - Adrian T. Halloway  
 CHECKED - Chi-Cheung Chau  
 DRAWN - Venkat Ramana Reddy  
 CHECKED - ATH CCC

PASSED

James F. [Signature]  
 ENGINEER OF BRIDGES AND STRUCTURES

DATE - SEPTEMBER 26, 2022

REVISED -  
 REVISED -

STATE OF ILLINOIS  
 DEPARTMENT OF TRANSPORTATION

BEARING DETAILS - BOTH ABUTMENTS  
 T.R. 284 OVER FAI 72  
 SN 069-0050

SHEET NO. 1 OF 1 SHEETS

F.A.I. RTE.	SECTION	COUNTY	TOTAL SHEETS	SHEET NO.
72	(69-9B1DR, 69-9HB-1, 3)BRR	MORGAN	9	9
CONTRACT NO. 72027				
ILLINOIS FED. AID PROJECT				