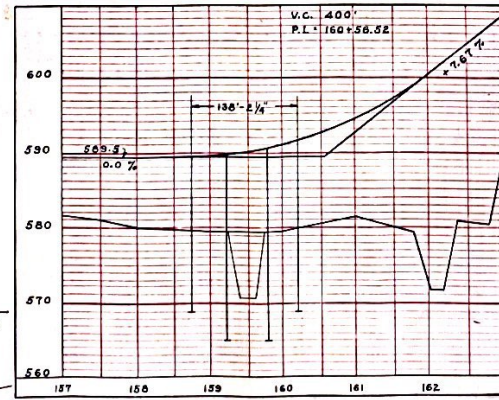
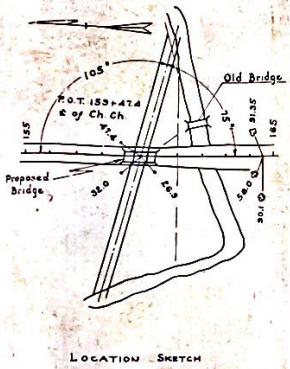
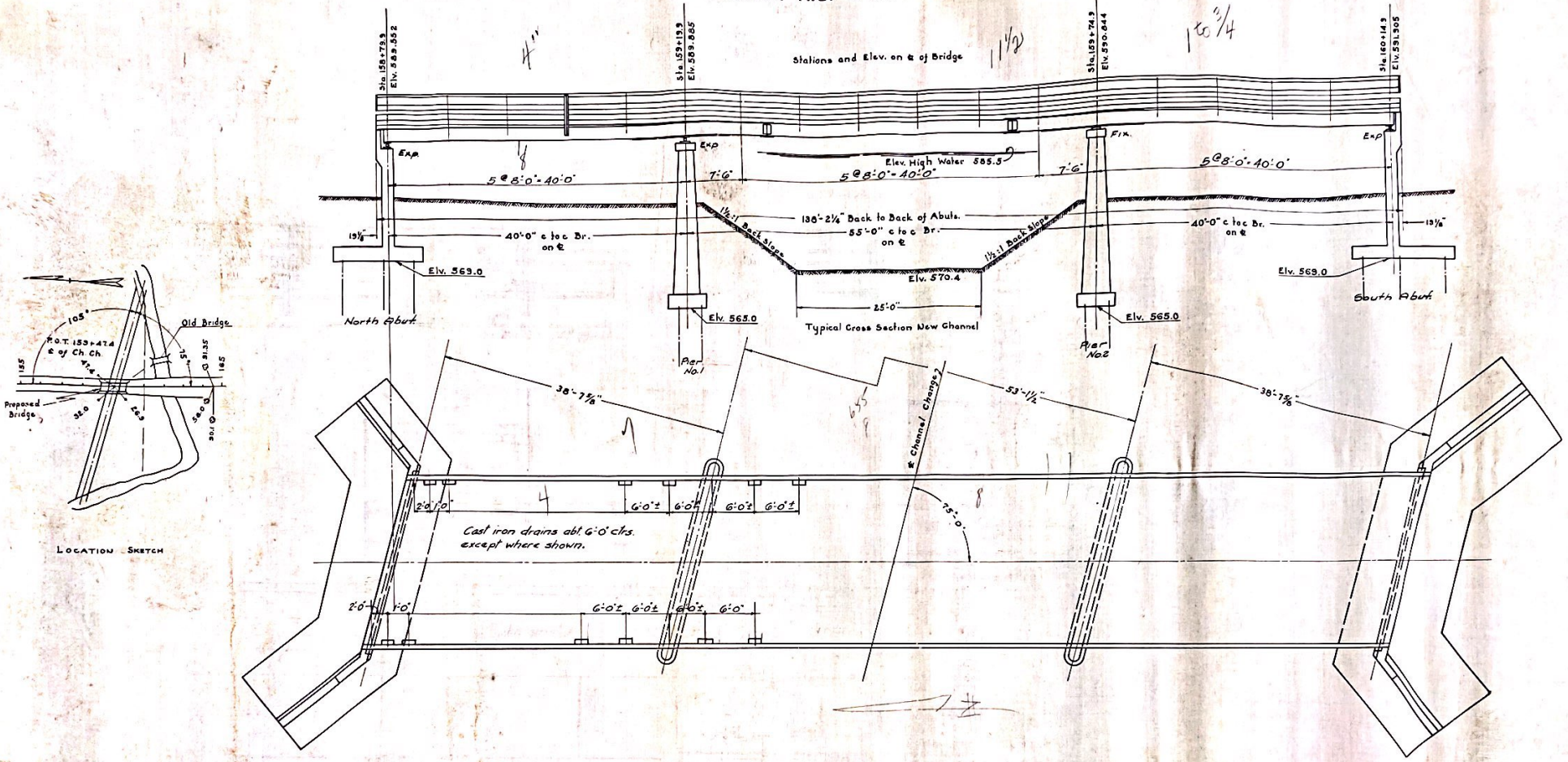


STATE OF ILLINOIS
DEPARTMENT OF PUBLIC WORKS & BUILDINGS
DIVISION OF HIGHWAYS



TOTAL BILL of MATERIAL

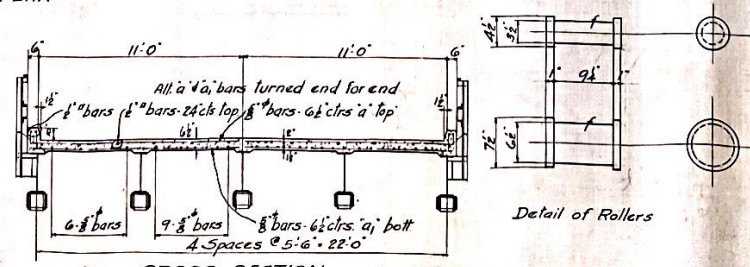
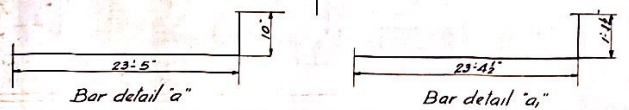
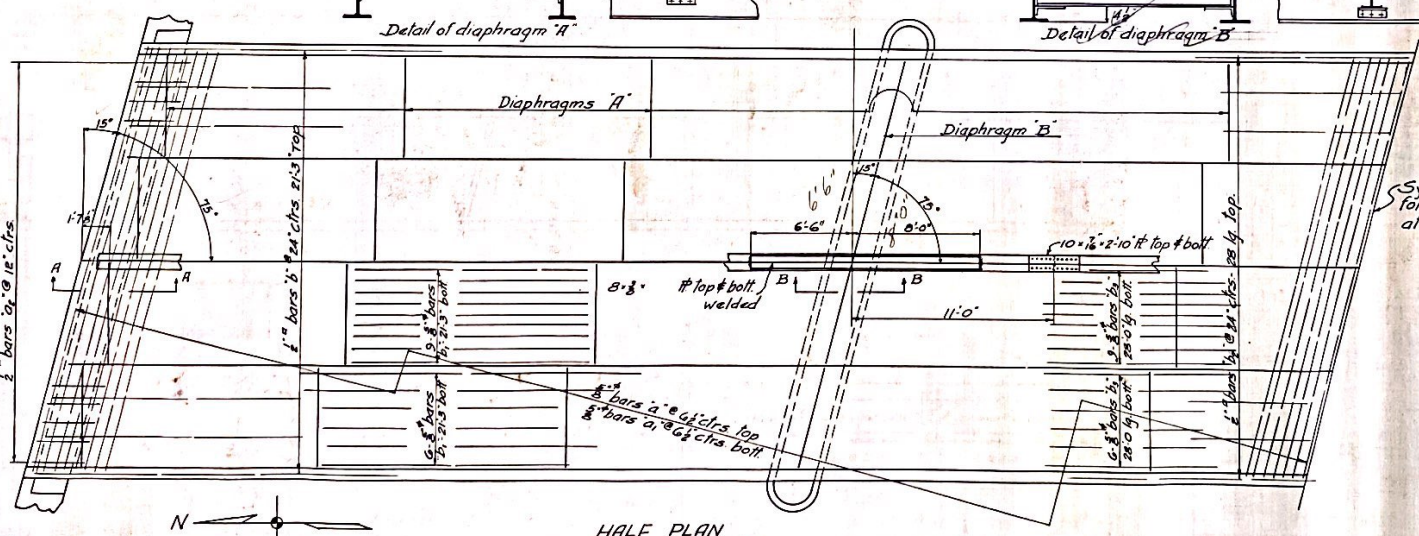
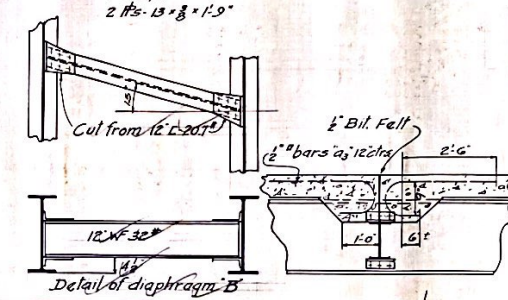
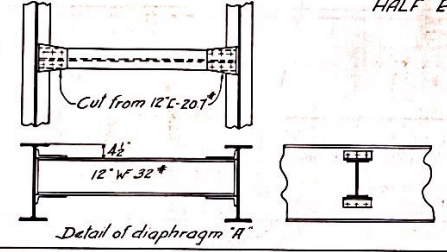
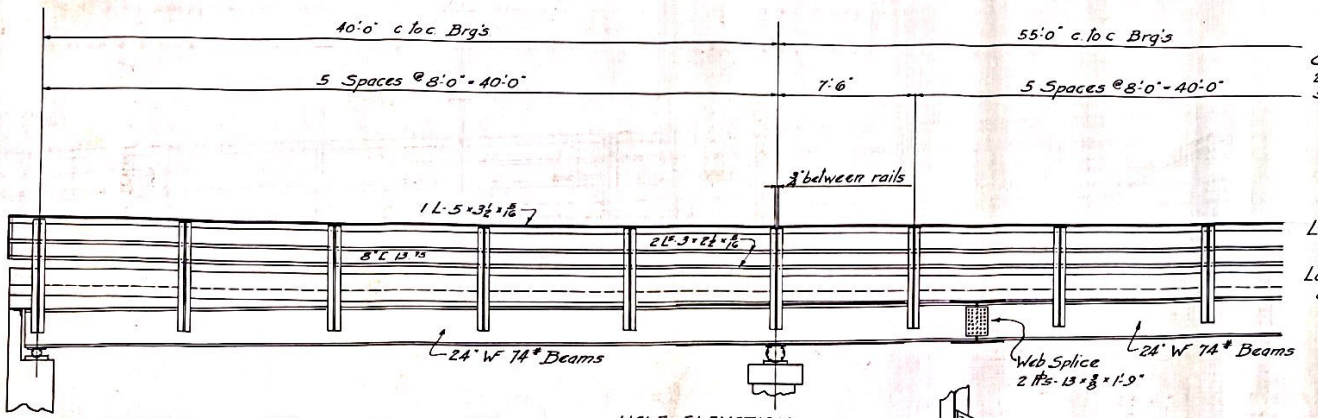
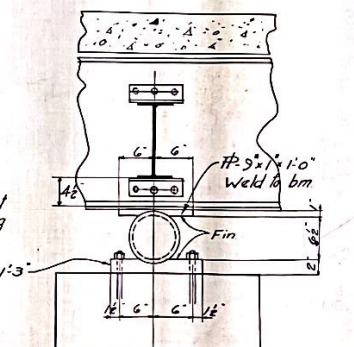
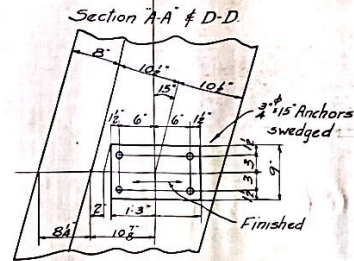
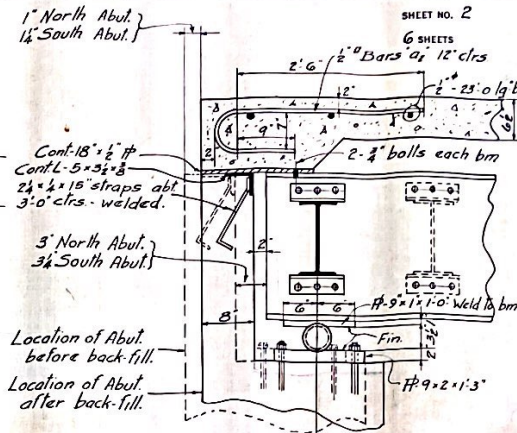
	Superstruct.	Abut.	Pier	Total
Class X Conc.	77.0	199.0	1.0	276.0
Reinforcing steel	18,126	24,855	2,000	43,581
Structural Steel Distributed Piles up to 20' L in ft	85,000	1,840	800	85,000
Name Plate	1			1
Class A Conc			135.0	135.0
C1 Floor Drains	each			48
Test Piles	each			2

COMPUTED	P.M.
CHECKED	SB
DRAWN	P.M. L.L.L.
CHECKED	SB
SPECIAL	ASSEMBLED
	CHECKED

EXAMINED 7-2-1935
 H. F. Burch
 BRIDGE ENGINEER
 PASSED
 H. E. Sullivan
 ENGINEER OF DESIGN
 APPROVED
 Carl S. Johnson
 CHIEF HIGHWAY ENGINEER

PLEASANT TWP
 S. A. #2 F. 25-452
 #16
 BRIDGE OVER
 OTTER CREEK
 STATE AD ROUTE 12 SECTION 6-B-M.P.T.
 STATION 158+74
 FULTON COUNTY

STATE OF ILLINOIS
DEPARTMENT OF PUBLIC WORKS & BUILDINGS
DIVISION OF HIGHWAYS



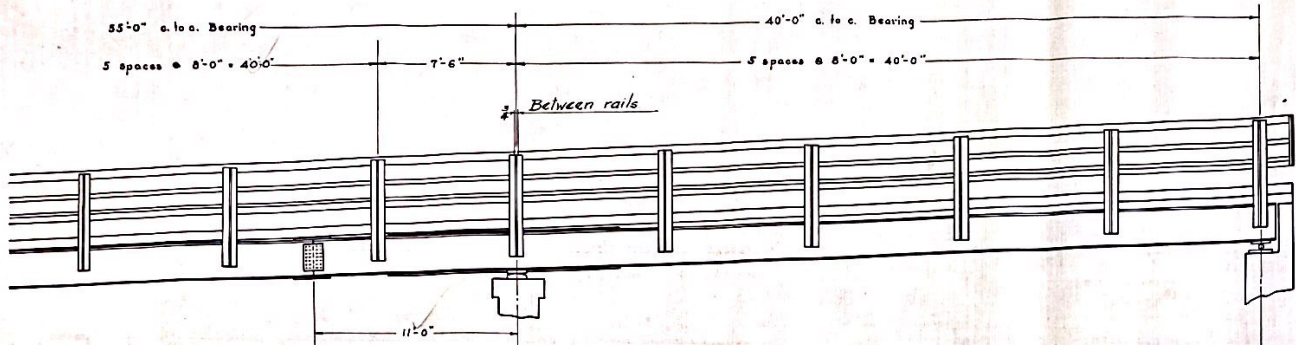
STANDARD	COMPUTED	P.M.
	CHECKED	H.
	DRAWN	P.M. &
	CHECKED	H.
SPECIAL	ASSEMBLED	
	CHECKED	

EXAMINED 7-2-1935
PASSED H. E. Jernigan
APPROVED Ernest Jernigan
CHIEF HIGHWAY ENGINEER

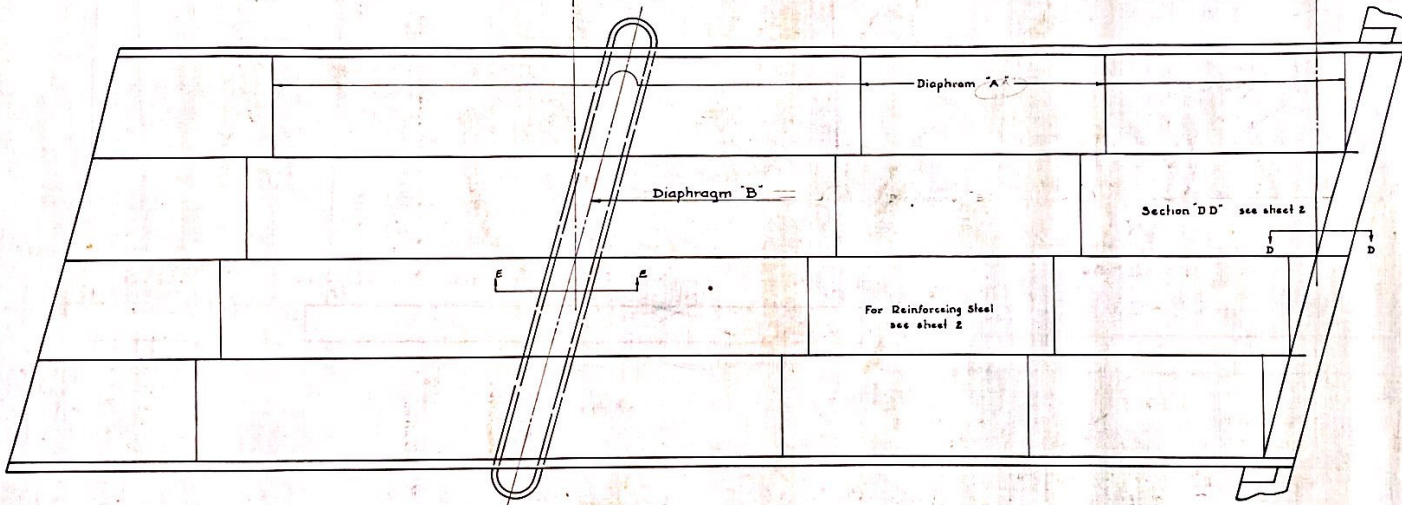
BRIDGE OVER OTTER CREEK
STATE AID ROUTE 12 SECTION 6-B-MFT
STATION 159+47.4
FULTON COUNTY

STATE OF ILLINOIS
DEPARTMENT OF PUBLIC WORKS & BUILDINGS
DIVISION OF HIGHWAYS

SHEET NO. 3
6 SHEETS

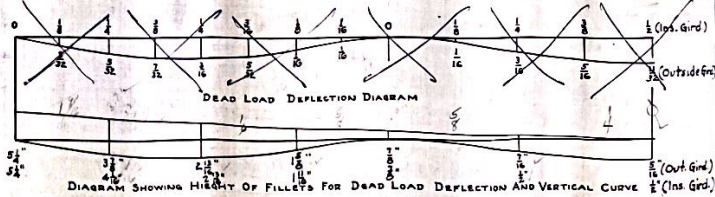
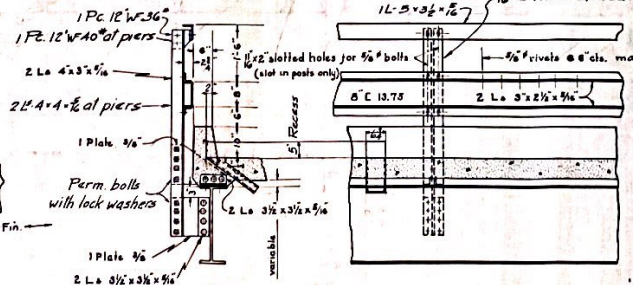
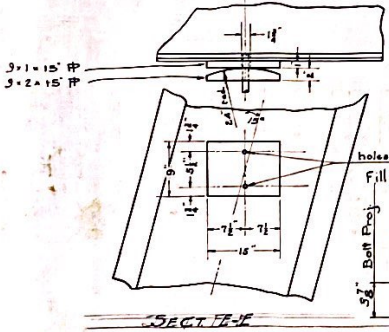


BILL OF MATERIAL		SUPERSTRUCTURE	
Desc	No.	Size	Length
a	245	5/8"	24'-3"
a ₁	245	5/8"	24'-6"
a ₂	48	1/2"	4'-0"
a ₃	48	1/2"	4'-0"
b	48	1/2"	21'-3"
b ₁	120	5/8"	21'-3"
b ₂	24	1/2"	28'-0"
b ₃	60	5/8"	28'-0"
b ₄	6	1/2"	23'-0"
Class X Concrete		Cu. Yds.	77
Reinforcing Steel		Lbs	18,726
Structural Steel		Lbs	85,000
Name Plate		Each	one



GENERAL NOTES

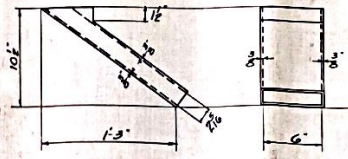
Reinforcing steel shall be wired securely in place before concrete is poured.
Class X Concrete shall be used throughout.
1/2" holes for 5/8" rivets unless noted.
All field connections riveted unless otherwise noted.
Hand rail posts to be placed vertical.
Hand rail posts to be shop assembled and match marked to insure a correct fit in the field.
Structural steel to be shop inspected by the Illinois Division of Highways before painting.
Structural steel shall be given one shop coat of blue lead paint and two field coats of white lead paint.
Rollers and bearing plates shall be made of structural steel.
Welding shall conform to the specifications of American Welding Society.
Steel surfaces in contact with steel or concrete shall not be painted.
Bridge slab to be finished according to section 45 of the standard specifications.



COMPUTED	R.M.
CHECKED	R.M.
DRAWN	R.M. & L.S.L.
CHECKED	R.M.
ASSEMBLED	
CHECKED	

EXAMINED
7-3-35
12-25
PASSED
APPROVED

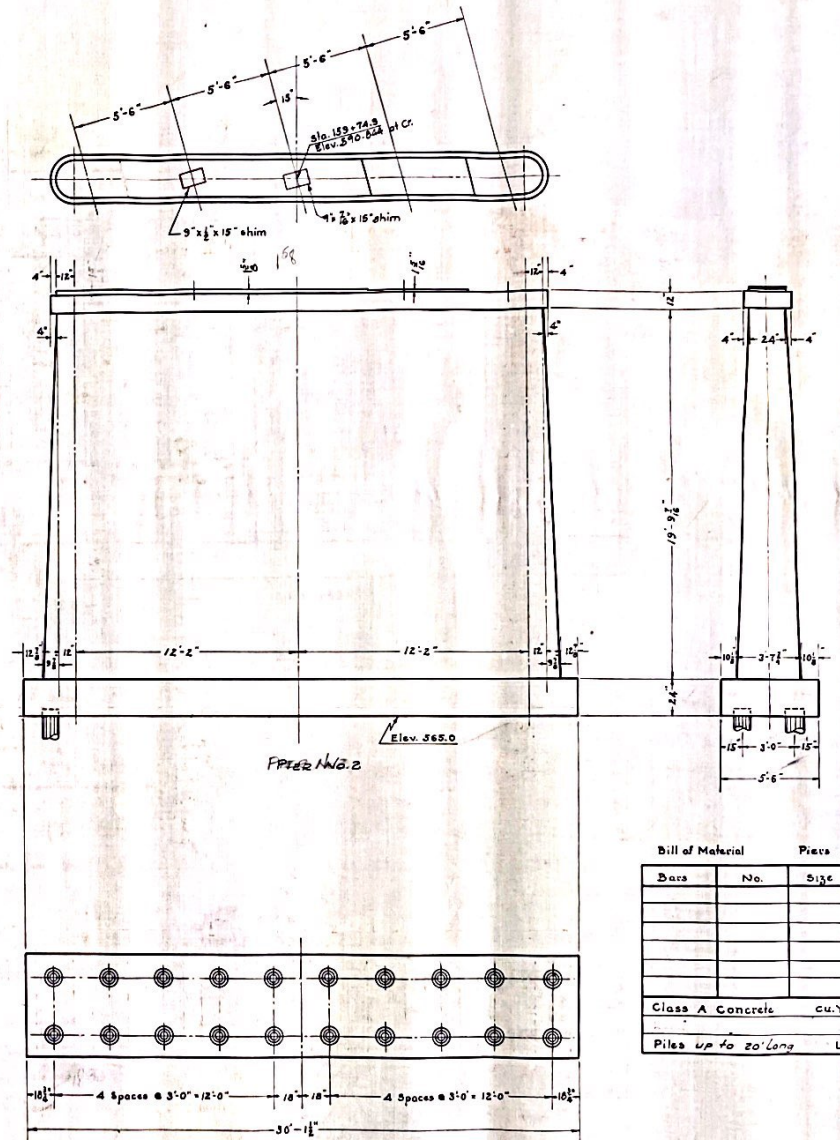
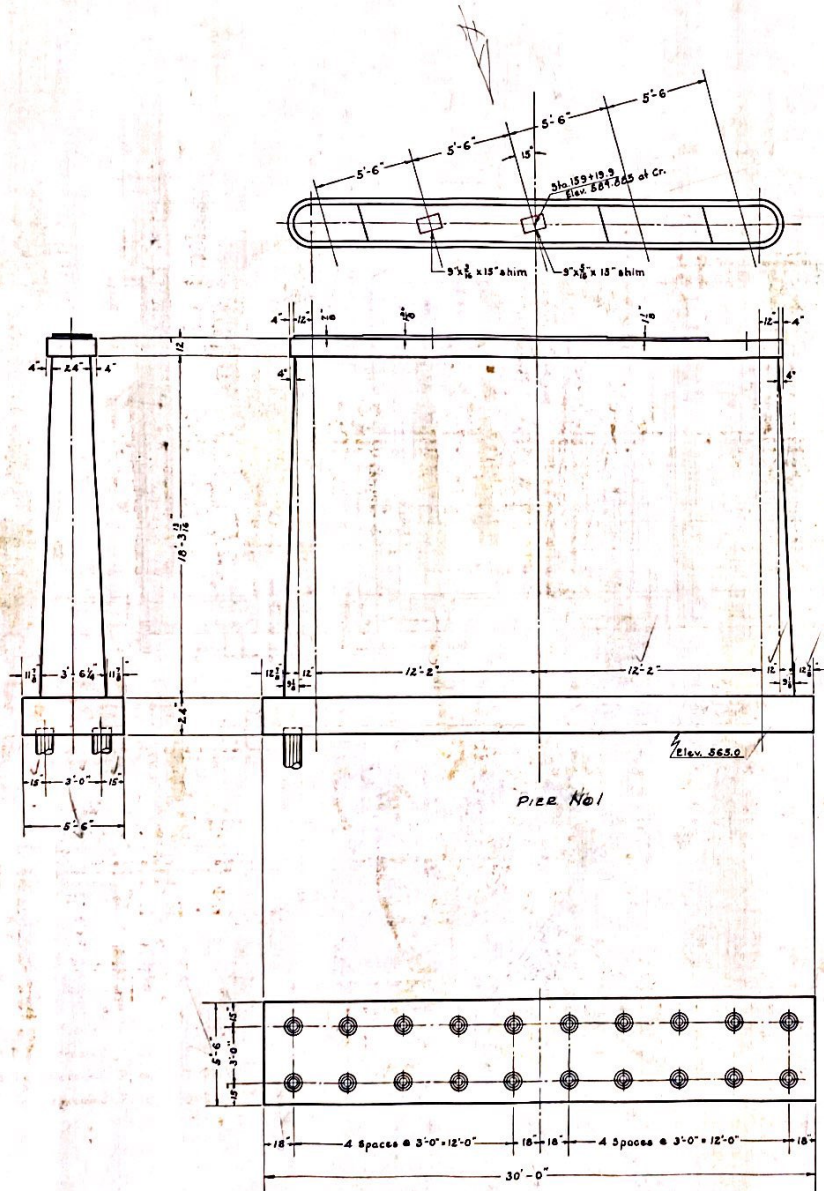
DETAIL OF HAND RAIL POST
Rail posts and curb to follow vertical curve.



BRIDGE OVER
OTTER CREEK
STATE AID ROUTE 12 SECTION 6-B-M.F.T.
STATION 159+47.4
FULTON COUNTY

STATE OF ILLINOIS
DEPARTMENT OF PUBLIC WORKS & BUILDINGS
DIVISION OF HIGHWAYS

SHEET NO. 4
6 SHEETS



Bill of Material Piers No. 1 & 2

Date	No.	Size	Length
Class A Concrete			cu. Yds. 135.0
Piles up to 20' Long			Lin. Ft. 800

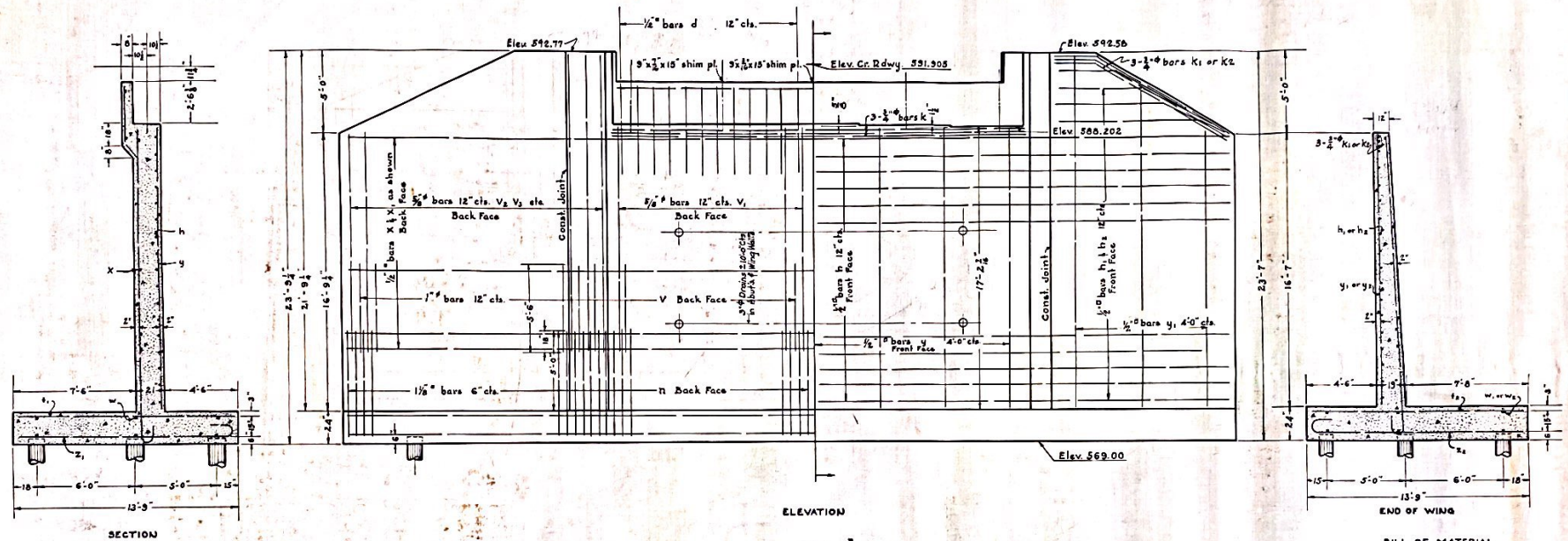
STANDARD	COMPUTED	<i>EM</i>
	CHECKED	<i>EM</i> <i>WM</i>
	DRAWN	<i>EM</i> L.S.L.
	CHECKED	<i>EM</i> <i>WM</i>
SPECIAL	ASSEMBLED	
	CHECKED	

EXAMINED 7-2-1935
H. E. Surman
 CIVIL ENGINEER
 PASSED
H. E. Surman
 CIVIL ENGINEER
 APPROVED
Chief Highway Engineer
 CHIEF HIGHWAY ENGINEER

© 16 Ton Piles 40 Req'd.

Class A Concrete shall be used throughout.
All reinforcing steel shall be wired securely in place before concrete is poured.

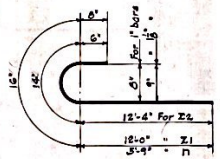
PIERS 1 & 2
BRIDGE OVER OTTER CREEK
STATE AID ROUTE 12 SECTION 65-M.F.T.
STATION 159+47.4
FULTON COUNTY



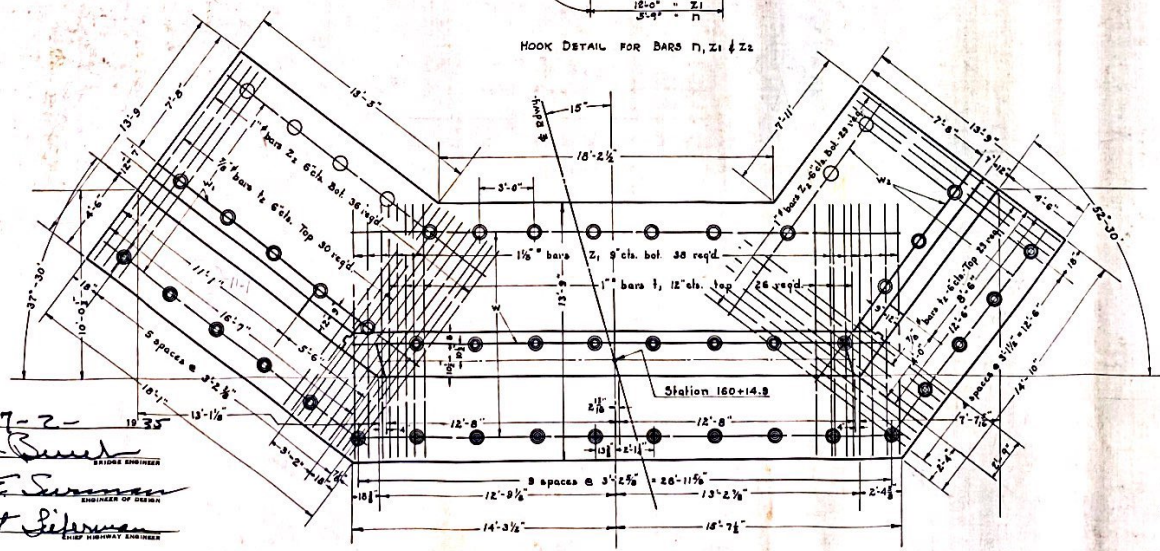
Class X Concrete shall be used throughout
All reinforcing steel shall be wired securely
in place before concrete is poured.

- 10 Ton Untreated Piles 5 Req'd.
- 15 Ton Untreated Piles 15 Req'd.
- ⊙ 16 Ton Untreated Piles 17 Req'd.
- ⊙ 20 Ton Untreated Piles 10 Req'd.

ELEVATION



HOOK DETAIL FOR BARS n, z1 & z2



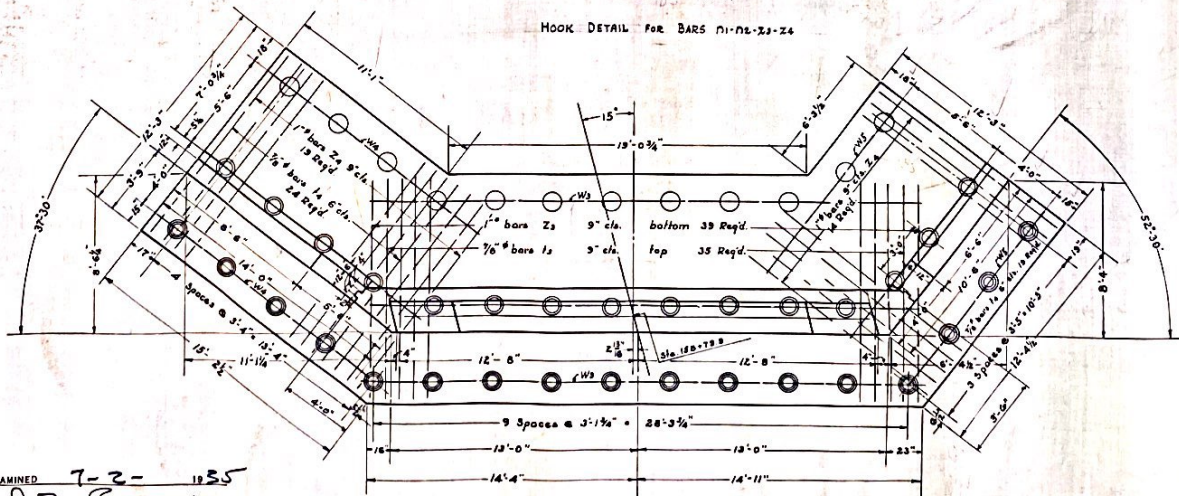
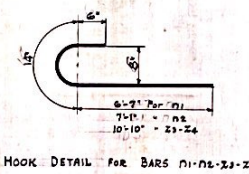
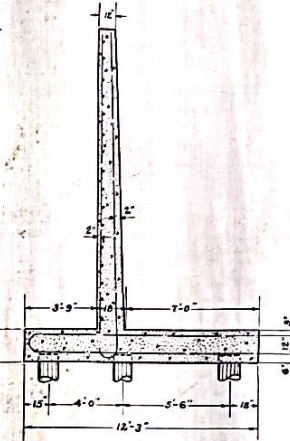
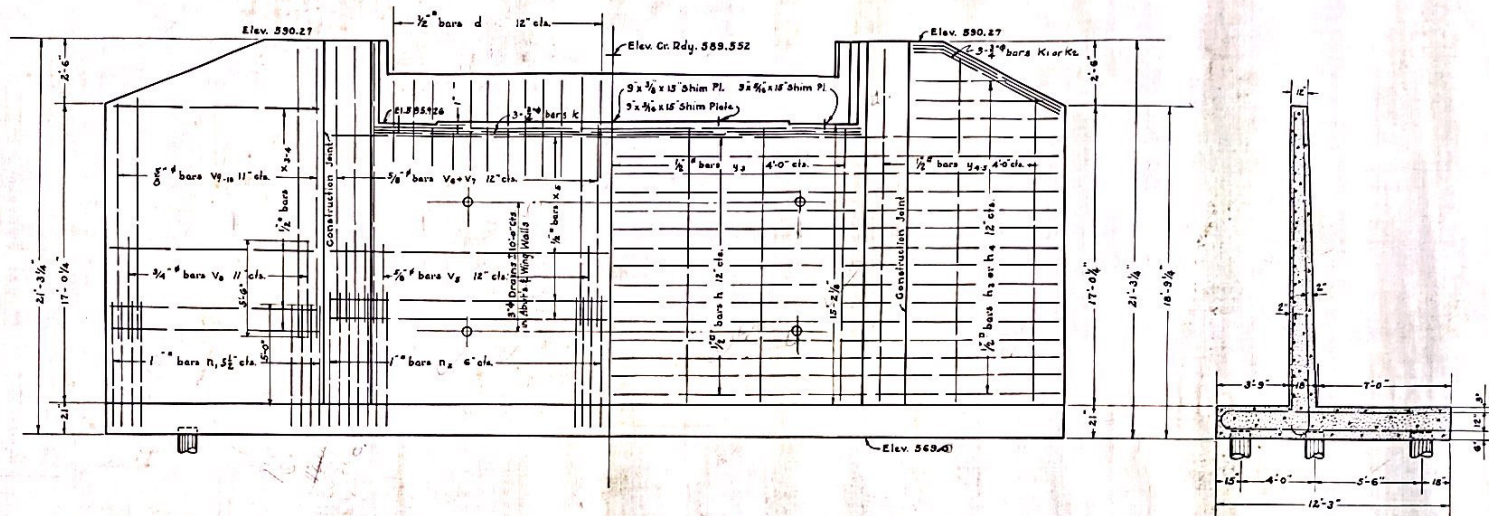
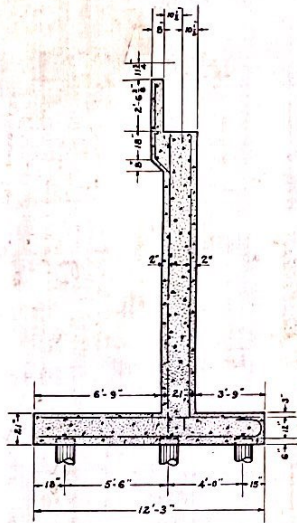
BILL OF MATERIAL

Bars	No.	Size	Length
V	53	7/8"	2'-6"
V1	27	7/8"	13'-6"
V2	9	"	14'-0"
V3	8	"	16'-0"
V4	10	"	18'-0"
d	26	1/2"	5'-0"
k	6	3/4"	16'-6"
K1	3	"	14'-0"
K2	3	"	17'-0"
n	107	1 1/8"	21'-9"
X	6	1/2"	28'-0"
X1	4	"	13'-6"
X2	4	"	10'-0"
h	17	1/2"	30'-0"
h1	21	"	13'-6"
h2	21	"	10'-0"
Y	7	1/2"	17'-0"
Y1	3	"	21'-0"
Y2	4	"	18'-0"
Z1	38	1 1/8"	14'-0"
Z2	65	1"	14'-0"
W	26	7"	13'-6"
W1	53	7/8"	13'-6"
W2	6	1/2"	30'-0"
W1	6	"	18'-0"
W2	6	"	14'-0"
Reinforcing Steel	lba.		14803
Class X Concrete	cu. yds.		112.0
Untreated Piles up to 20 cts. lin. ft.			960

STANDARD	COMPUTED	<i>DM</i>	
	CHECKED	<i>DM</i>	<i>J.M.</i>
	DRAWN	<i>DM</i>	<i>A.S.L.</i>
	CHECKED	<i>DM</i>	<i>M.H.</i>
SPECIAL	ASSEMBLED		
	CHECKED		

EXAMINED **7-2-1935**
[Signature]
PASSED **7-2-1935**
[Signature]
APPROVED **7-2-1935**
[Signature]

SOUTH ABUTMENT
BRIDGE OVER OTTER CREEK
STATE AID ROUTE 12, SECTION 6-B M.F.T.
STATION 159+47.4
FULTON COUNTY



Class X Concrete shall be used throughout.
All reinforcing steel shall be wired securely
in place before concrete is poured.

- 10 Ton Untreated Piles 12 Req'd.
- 15 Ton Untreated Piles 15 Req'd.
- 18 Ton Untreated Piles 17 Req'd.

Bar	Number	Size	Length
V4	27	3/8"	4'-6"
V6	27	3/8"	10'-6"
V7	4	3/8"	15'-0"
V8	20	3/8"	5'-0"
V9	12	1"	13'-0"
V10	8	1"	15'-0"
d	26	1/2"	5'-6"
N1	44	1"	8'-3"
N2	54	1"	8'-9"
Z3	4	1/2"	11'-0"
Z4	4	1/2"	8'-0"
X4	6	1/2"	28'-0"
X5	6	1/2"	16'-6"
h	15	3/4"	30'-0"
h1	19	1/2"	11'-0"
h2	19	1/2"	8'-0"
K1	3	3/4"	10'-6"
Y3	7	1/2"	15'-0"
Y4	3	1/2"	19'-0"
Y5	4	1/2"	17'-0"
K2	3	3/4"	8'-0"
Z2	39	1"	12'-6"
Z3	33	1"	12'-6"
Z4	35	3/8"	12'-0"
T4	43	3/8"	12'-0"
W3	6	1/2"	29'-0"
W4	6	1/2"	14'-6"
W5	6	1/2"	11'-0"
Reinforcing Steel	lbs.		10352
Class X Concrete	cu. yds.		67
Untreated Piles up to 20' in fl			880

STANDARD	COMPUTED	<i>P.M.</i>	
	CHECKED	<i>H.</i>	<i>V.P.M.</i>
SPECIAL	DRAWN	<i>P.M.</i>	<i>L.S.H.</i>
	CHECKED	<i>H.</i>	<i>V.P.M.</i>
SPECIAL	ASSEMBLED		
	CHECKED		

EXAMINED *7-2-1935*
J.F. Curran
BRIDGE ENGINEER
PASSED *H.E. Johnson*
ENGINEER OF BRIDGES
APPROVED *Amos Johnson*
CITY ENGINEER

NORTH ABUTMENT
BRIDGE OVER OTTER CREEK
STATE AID ROUTE 12 SECTION 6-B-M.F.T.
STATION 159+47.4
FULTON COUNTY