

F.A.	SECTION	COUNTY	TOTAL SHEETS	SHEET NO.
VARIOUS	2014-0381	DUPAGE	33	1
		ILLINOIS	CONTRACT NO. 60Y32	

**STATE OF ILLINOIS
DEPARTMENT OF TRANSPORTATION
DIVISION OF HIGHWAYS**

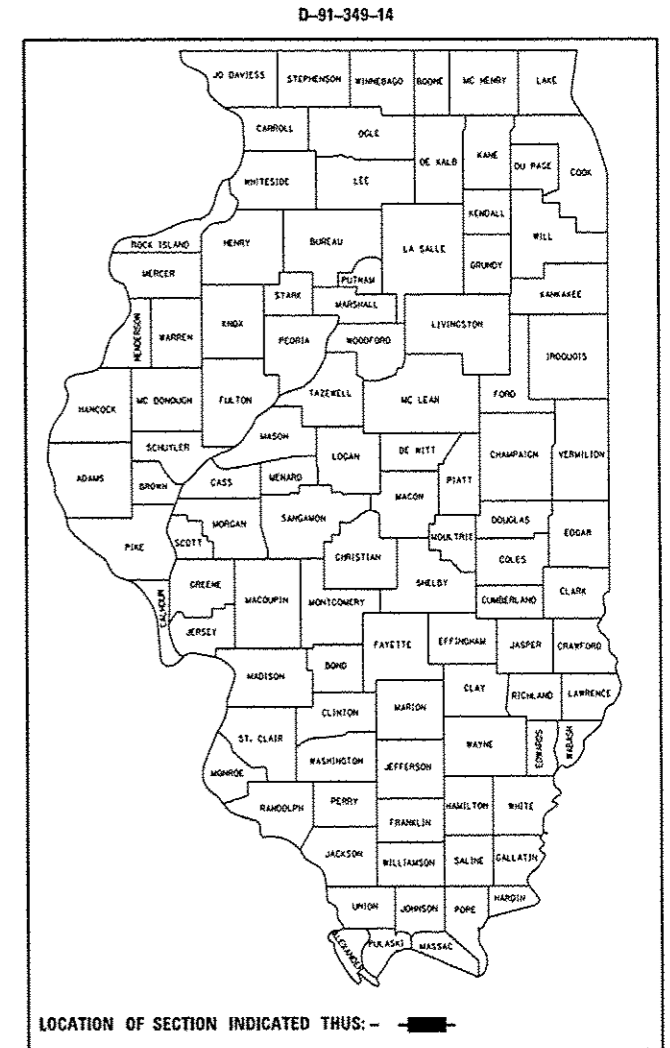
**PROPOSED
HIGHWAY PLANS**

FOR INDEX OF SHEETS, SEE SHEET NO. 2

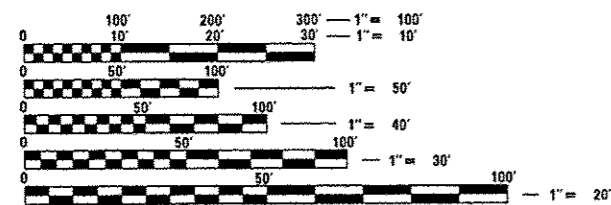
IMPROVEMENTS ARE LOCATED IN THE
CITIES OF
ELMHURST, WEST CHICAGO, WOOD DALE,
THE VILLAGES OF
ADDISON, BENSENVILLE, GLEN ELLYN,
HANOVER PARK, ITASCA, LOMBARD,
OAK BROOK, VILLA PARK, WINFIELD,
AND
ADDISON, BLOOMINGDALE, MILTON,
WAYNE, WINFIELD, & YORK
TOWNSHIPS

**VARIOUS ROUTES
VARIOUS LOCATIONS: N. OF IL 38 & INCLUDING IL 38
SECTION 2014-0381
BRIDGE DECK SEALING
DUPAGE COUNTY**

C-91-349-14



**SEE LOCATION MAPS
SHEETS 5 - 10**



FULL SIZE PLANS HAVE BEEN PREPARED USING STANDARD ENGINEERING SCALES. REDUCED SIZED PLANS WILL NOT CONFORM TO STANDARD SCALES. IN MAKING MEASUREMENTS ON REDUCED PLANS, THE ABOVE SCALES MAY BE USED.

J.U.L.I.E.
JOINT UTILITY LOCATION INFORMATION FOR EXCAVATION
1-800-892-0123
OR 811

PROJECT ENGINEER: ALAIN MIDY (847) 221-3056
PROJECT MANAGER ISSAM RAYYAN (847) 705-4178

CONTRACT NO. 60Y32

STATE OF ILLINOIS
DEPARTMENT OF TRANSPORTATION
DIVISION OF HIGHWAYS

SUBMITTED August 6, 2014
John P. Tomason, Jr.
DEPUTY DIRECTOR OF HIGHWAYS, REGION ENGINEER

Oct 17, 2014
John D. Baranzelli, PE, PE
ENGINEER OF DESIGN AND ENVIRONMENT

Oct 17, 2014
Omer Osman, PE, PE
DIRECTOR OF HIGHWAYS, CHIEF ENGINEER

**PRINTED BY THE AUTHORITY
OF THE STATE OF ILLINOIS**