

STATE OF ILLINOIS
DEPARTMENT OF TRANSPORTATION
DIVISION OF HIGHWAYS

| | | | | |
|-----------------------------|-----------|--------|--------------|-----------|
| F.A.P. RTE. | SECTION | COUNTY | TOTAL SHEETS | SHEET NO. |
| 21559 21374 | 2014-0491 | COOK | 9 | 1 |
| ILLINOIS CONTRACT NO. 60Y63 | | | | |

FOR INDEX OF SHEETS, SEE SHEET NO. 2

IMPROVEMENTS ARE LOCATED IN THE VILLAGES OF ROLLING MEADOWS AND GLENVIEW

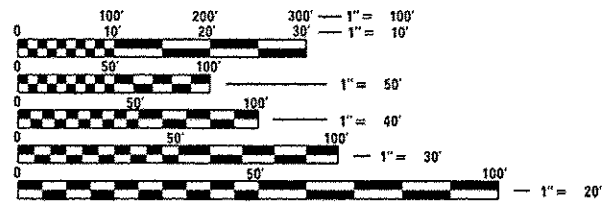
**PROPOSED
HIGHWAY PLANS**

Loc 1) F.A.P. ROUTE 559: IL 58 (GOLF RD.)
OVER SALT CREEK
Loc 2) F.A.P. ROUTE 374: IL 21 (MILWAUKEE AVE.)
OVER RR-UP
SECTION 2014-0491
BRIDGE JOINT REPAIR
COOK COUNTY

TRAFFIC DATA

IL 21
2013 ADT = 31,700
SPEED LIMIT = 45 MPH

IL 58
2013 ADT = 33,100
SPEED LIMIT = 45 MPH



FULL SIZE PLANS HAVE BEEN PREPARED USING STANDARD ENGINEERING SCALES. REDUCED SIZED PLANS WILL NOT CONFORM TO STANDARD SCALES. IN MAKING MEASUREMENTS ON REDUCED PLANS, THE ABOVE SCALES MAY BE USED.

J.U.L.I.E.
JOINT UTILITY LOCATION INFORMATION FOR EXCAVATION
1-800-892-0123
OR 811

PROJECT ENGINEER: J. ALAIN MIDY (847) 221-3056
PROJECT MANAGER: ISSAM RYAN

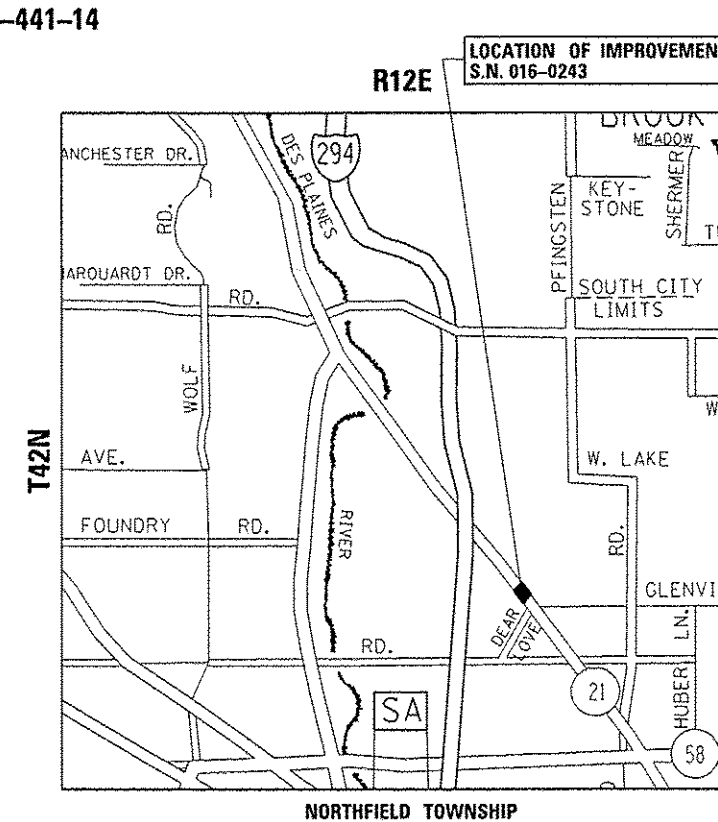
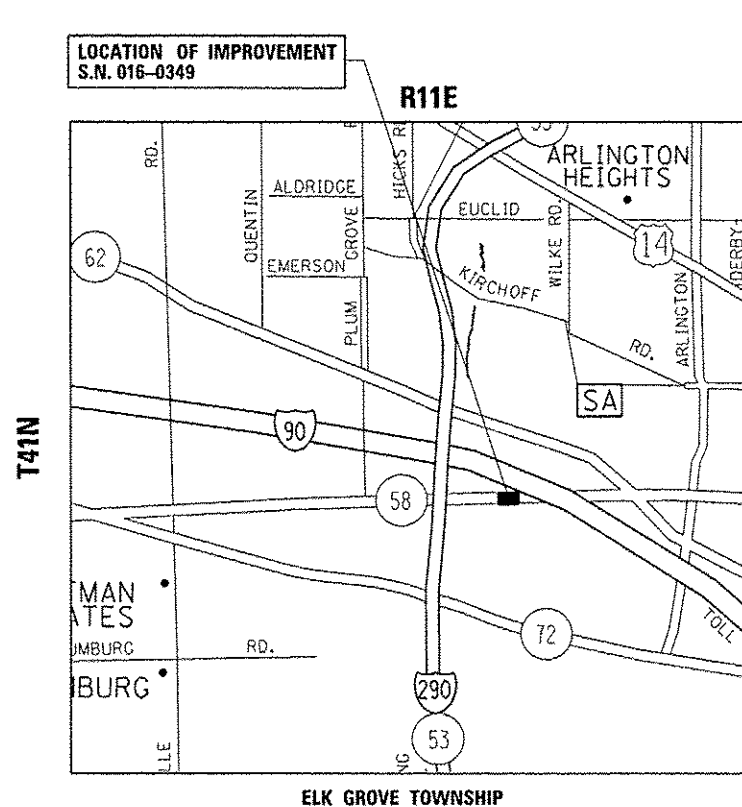
CONTRACT NO. 60Y63

GROSS AND NET LENGTH = 240.3 FT. = .045 MILE

D-91-441-14



LOCATION OF SECTION INDICATED THUS: - [black rectangle] -



STATE OF ILLINOIS
DEPARTMENT OF TRANSPORTATION
DIVISION OF HIGHWAYS

SUBMITTED August 6, 2014
John Fontana Jr.
DEPUTY DIRECTOR OF HIGHWAYS, REGION ENGINEER

OCT 17 2014
John P. Baranzelli Jr.
ENGINEER OF DESIGN AND ENVIRONMENT

OCT 17 2014
Omec Osman Jr.
DIRECTOR OF HIGHWAYS, CHIEF ENGINEER

PRINTED BY THE AUTHORITY
OF THE STATE OF ILLINOIS

INDEX OF SHEETS

| SHEET NO. | DESCRIPTION |
|-----------|--|
| 1 | TITLE SHEET |
| 2 | INDEX OF SHEETS, STATE STANDARDS, AND GENERAL NOTES |
| 3 | SUMMARY OF QUANTITIES |
| 4-5 | LOCATION 1: SN 016-0349 (IL 58 OVER SALT CREEK) |
| 6-7 | LOCATION 2: SN 016-0243 (IL 21 OVER UP RR) |
| 8 | TRAFFIC CONTROL AND PROTECTION FOR SIDEROADS, INTERSECTIONS, AND DRIVEWAYS (TC-10) |
| 9 | ARTERIAL ROAD INFORMATION SIGN (TC-22) |

STATE STANDARDS

| STANDARD NO | DESCRIPTION |
|-------------|--|
| 701601-09 | URBAN LANE CLOSURE, MULTILANE, 1W OR 2W WITH NONTRAVERSABLE MEDIAN |
| 701701-09 | URBAN LANE CLOSURE, MULTILANE INTERSECTION |
| 701801-05 | SIDEWALK, CORNER OR CROSSWALK CLOSURE |
| 701901-03 | TRAFFIC CONTROL DEVICES |

GENERAL NOTES

BEFORE STARTING ANY EXCAVATION, THE CONTRACTOR SHALL CALL "J.U.L.I.E." AT (800) 892-0123 OR 811 FOR FIELD LOCATIONS OF BURIED ELECTRIC, TELEPHONE AND GAS UTILITIES. 48 HOUR NOTIFICATION IS REQUIRED.

THE CONTRACTOR SHALL COORDINATE CONSTRUCTION ACTIVITIES WITH UTILITY COMPANIES, AND THE VILLAGES OF ROLLING MEADOWS AND GLENVIEW.

THE CONTRACTOR WILL NOT BE ALLOWED TO SET UP A YARD OR FIELD OFFICE ON STATE PROPERTY WITHOUT WRITTEN PERMISSION FROM THE DEPARTMENT.

IT SHALL BE THE CONTRACTOR'S RESPONSIBILITY TO VERIFY ALL DIMENSIONS AND CONDITIONS EXISTING IN THE FIELD PRIOR TO CONSTRUCTION AND ORDERING OF MATERIALS.

THE CONTRACTOR SHALL CONTACT THE DISTRICT ONE TRAFFIC CONTROL SUPERVISOR AT (847)705-705-4470 A MINIMUM OF 72 HOURS IN ADVANCE OF BEGINNING WORK.

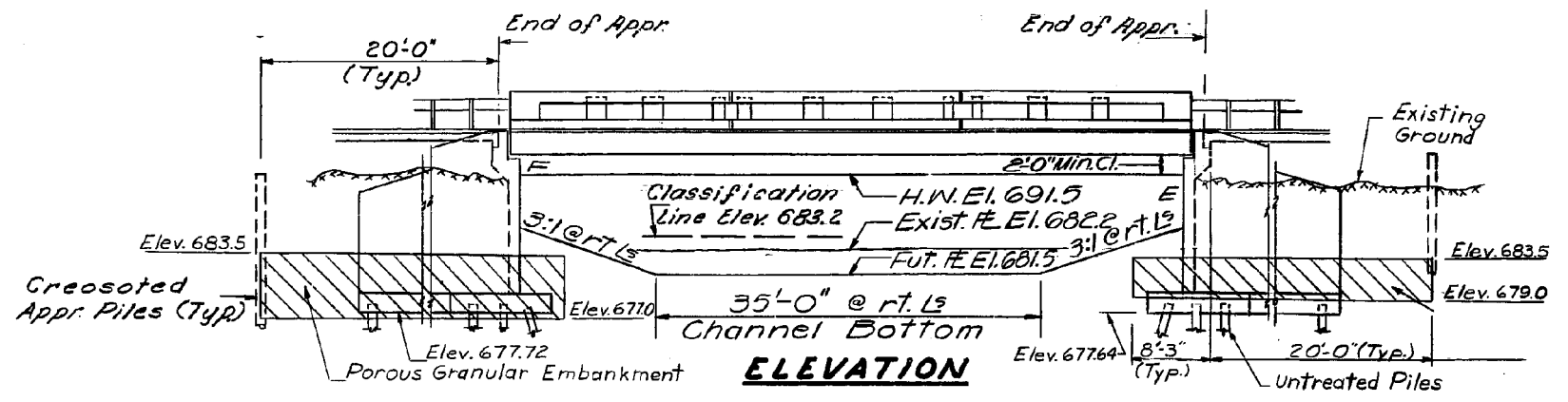
THESE PLANS HAVE BEEN PREPARED FROM NOTES RECEIVED FROM THE BUREAU OF MAINTENANCE BRIDGE INSPECTORS.

THE CONTRACTOR SHALL BE REQUIRED TO PROVIDE ACCESS TO ABUTTING PROPERTY AT ALL TIMES DURING THE CONSTRUCTION OF THIS PROJECT.

THE CONTRACTOR SHALL TAKE NECESSARY PRECAUTIONS TO INSURE THAT NO DEBRIS WILL ENDANGER OR INTERFERE WITH TRAFFIC ON THE RAILROAD BENEATH THE BRIDGE ACCORDING TO ARTICLE 107.12 OF THE STANDARD SPECIFICATIONS. THIS WORK WILL NOT BE PAID FOR SEPARATELY, BUT SHALL BE INCLUDED IN THE CONTRACT UNIT PRICE FOR THE APPROPRIATE PAY ITEM INVOLVED AND NO ADDITIONAL COMPENSATION WILL BE ALLOWED.

THE DEPARTMENT HAS DETERMINED THAT IN STREAM WORK IS NOT REQUIRED FOR THE WORK SPECIFIED IN THIS CONTRACT. THE DEPARTMENT HAS NOT OBTAINED A 404 PERMIT. IF THE CONTRACTOR CHOOSES TO USE ACTIVITIES REQUIRING AN USACE 404 PERMIT IT IS THE CONTRACTOR'S RESPONSIBILITY TO SECURE THE PROPER USACE PERMITS.

| | | | | | | | | | | | |
|---------------------------------------|--------------------------------|------------|-----------|---|----------------------|--------------------|-----------|--------|--------------|-----------------------------|--|
| FILE NAME = | USER NAME = hardnettr | DESIGNED - | REVISED - | STATE OF ILLINOIS DEPARTMENT OF TRANSPORTATION | GENERAL NOTES | F.A.P. RTE. | SECTION | COUNTY | TOTAL SHEETS | SHEET NO. | |
| c:\p\work\p\p\dot\hardnettr\0407384\0 | 14114-ehi-plan.dgn | DRAWN - | REVISED - | | | 21 558 | 2014-0491 | COOK | 9 | 2 | |
| | PLOT SCALE = 100.0000 ' / 1" = | CHECKED - | REVISED - | | | CONTRACT NO. 60Y63 | | | | | |
| Default | PLOT DATE = 8/29/2014 | DATE - | REVISED - | | | SCALE: | SHEET OF | SHEETS | STA. TO STA. | [ILLINOIS] FED. AID PROJECT | |

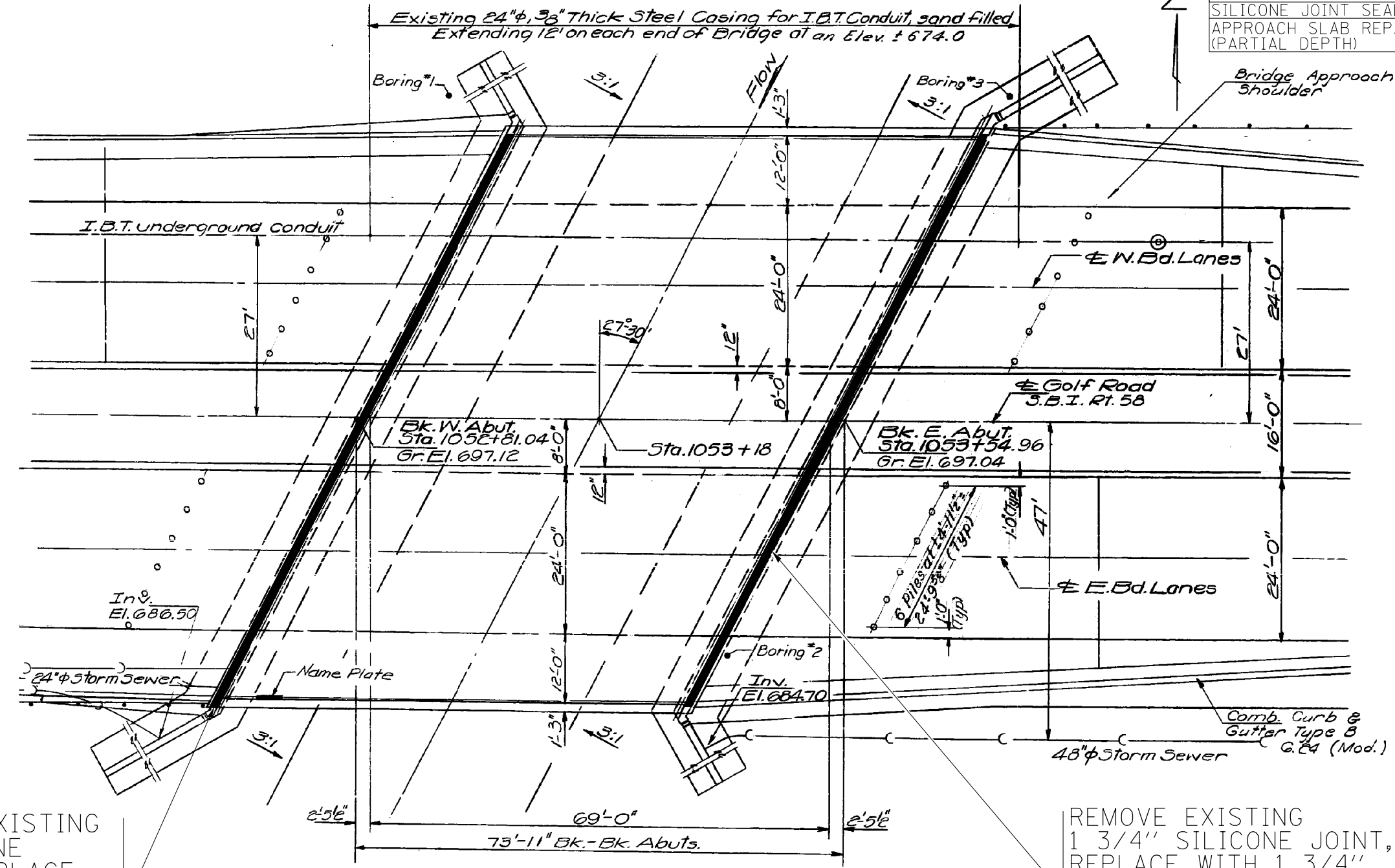


BILL OF MATERIAL (016-0349)

| ITEM | UNIT | QUANTITY |
|-------------------------------|------|----------|
| SILICONE JOINT SEALER, 1" | FOOT | 102 |
| SILICONE JOINT SEALER, 1 3/4" | FOOT | 102 |

TOTAL BILL OF MATERIAL

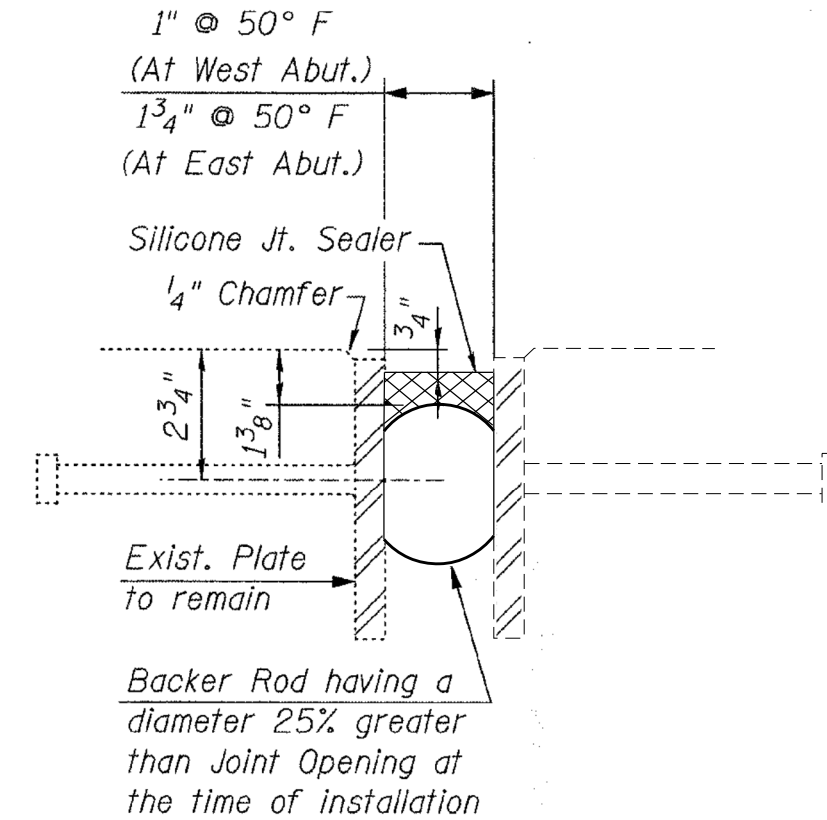
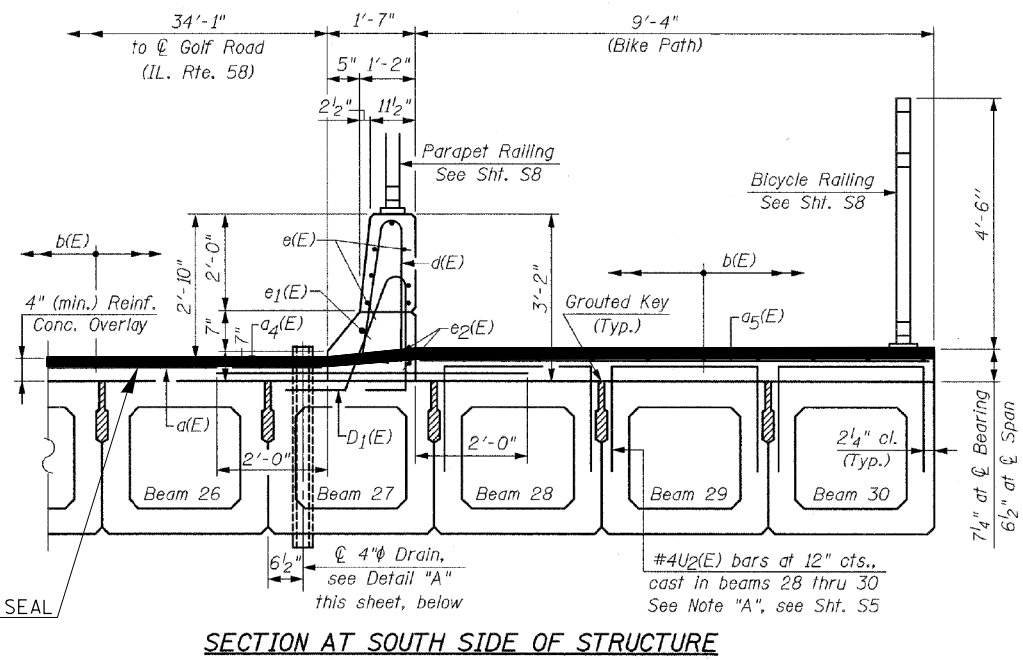
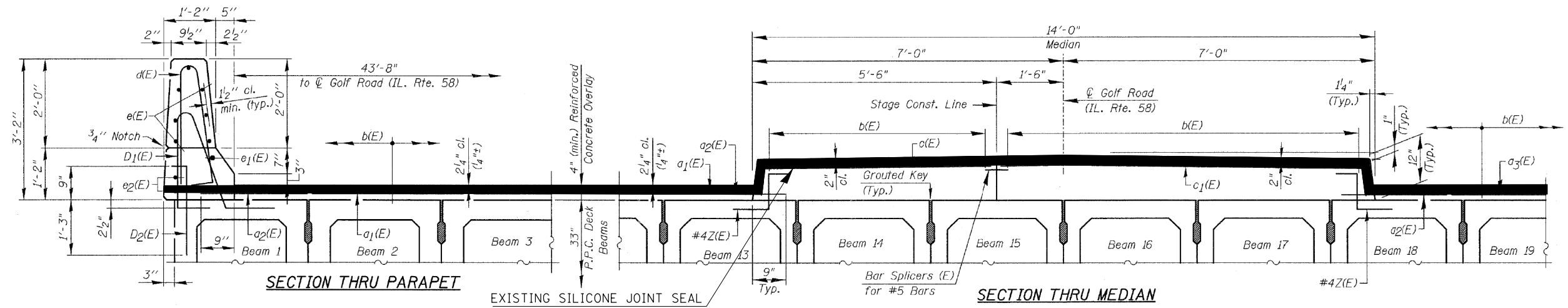
| ITEM | UNIT | QUANTITY |
|--------------------------------------|-------|----------|
| SILICONE JOINT SEALER, 1" | FOOT | 188 |
| SILICONE JOINT SEALER, 1 1/2" | FOOT | 258 |
| SILICONE JOINT SEALER, 1 3/4" | FOOT | 102 |
| APPROACH SLAB REPAIR (PARTIAL DEPTH) | SQ YD | 2 |



PLAN

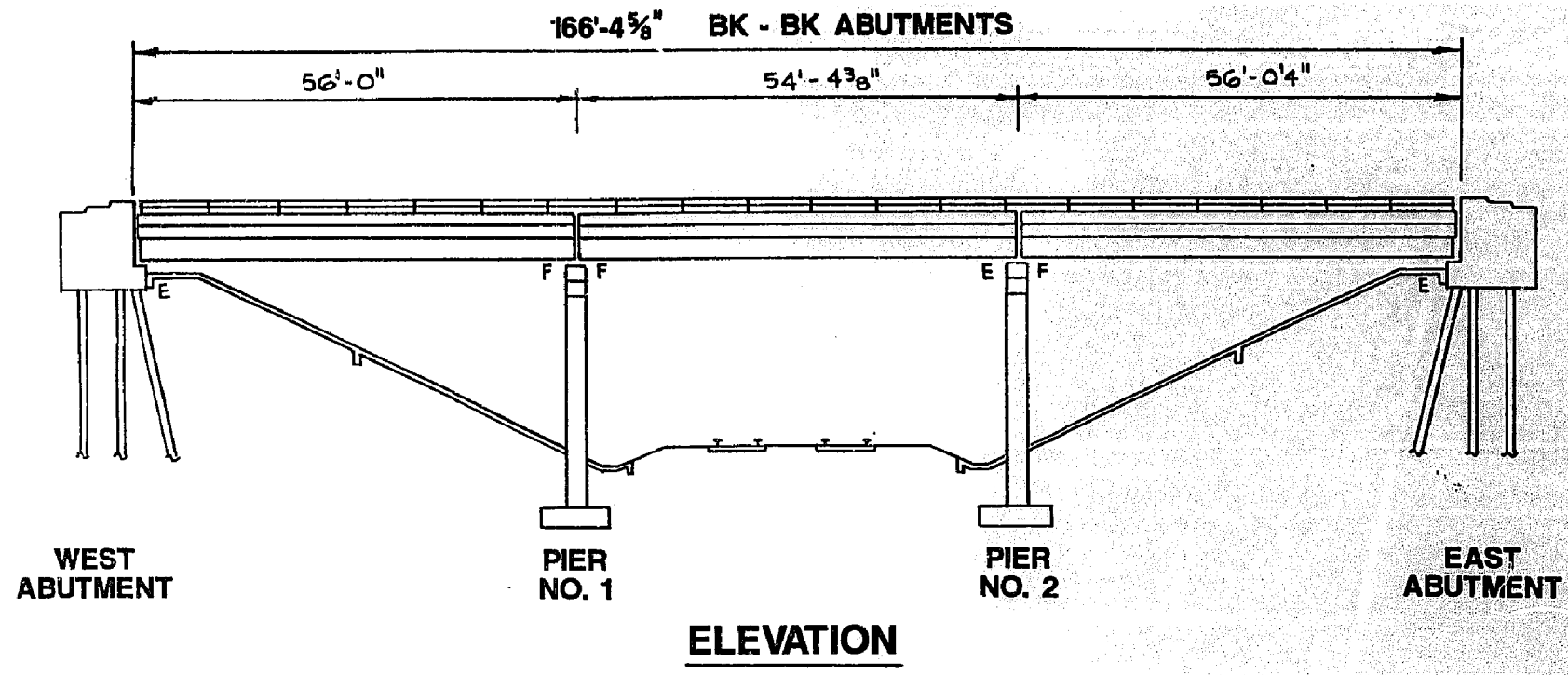
REMOVE EXISTING 1" SILICONE JOINT, REPLACE WITH 1" SILICONE JOINT SEALER

REMOVE EXISTING 1 3/4" SILICONE JOINT, REPLACE WITH 1 3/4" SILICONE JOINT SEALER



PROPOSED **SILICONE JOINT SEAL**
(At Abutments)

| | | | | | | | | | | | | |
|-------------|------------------------------|------------|-----------|---|--|-------|----|--------------------|-----------|--------|--------------|---------------------------|
| FILE NAME = | USER NAME = hardnettbr | DESIGNED - | REVISED - | STATE OF ILLINOIS DEPARTMENT OF TRANSPORTATION | LOCATION 1 (016-0349) IL 58 OVER SALT CREEK BRIDGE REPAIR DETAILS | | | F.A.P. RTE. | SECTION | COUNTY | TOTAL SHEETS | SHEET NO. |
| Default | 44114-sht-plan.dgn | DRAWN - | REVISED - | | | | | 559 | 2014-049I | COOK | 9 | 5 |
| | PLOT SCALE = 100.0000' / in. | CHECKED - | REVISED - | | | | | 374 | | | | |
| | PLOT DATE = 8/29/2014 | DATE - | REVISED - | | | | | CONTRACT NO. 60Y63 | | | | |
| | | | | | SCALE: | SHEET | OF | SHEETS | STA. | TO | STA. | ILLINOIS FED. AID PROJECT |



BILL OF MATERIAL (SN 016-0243)

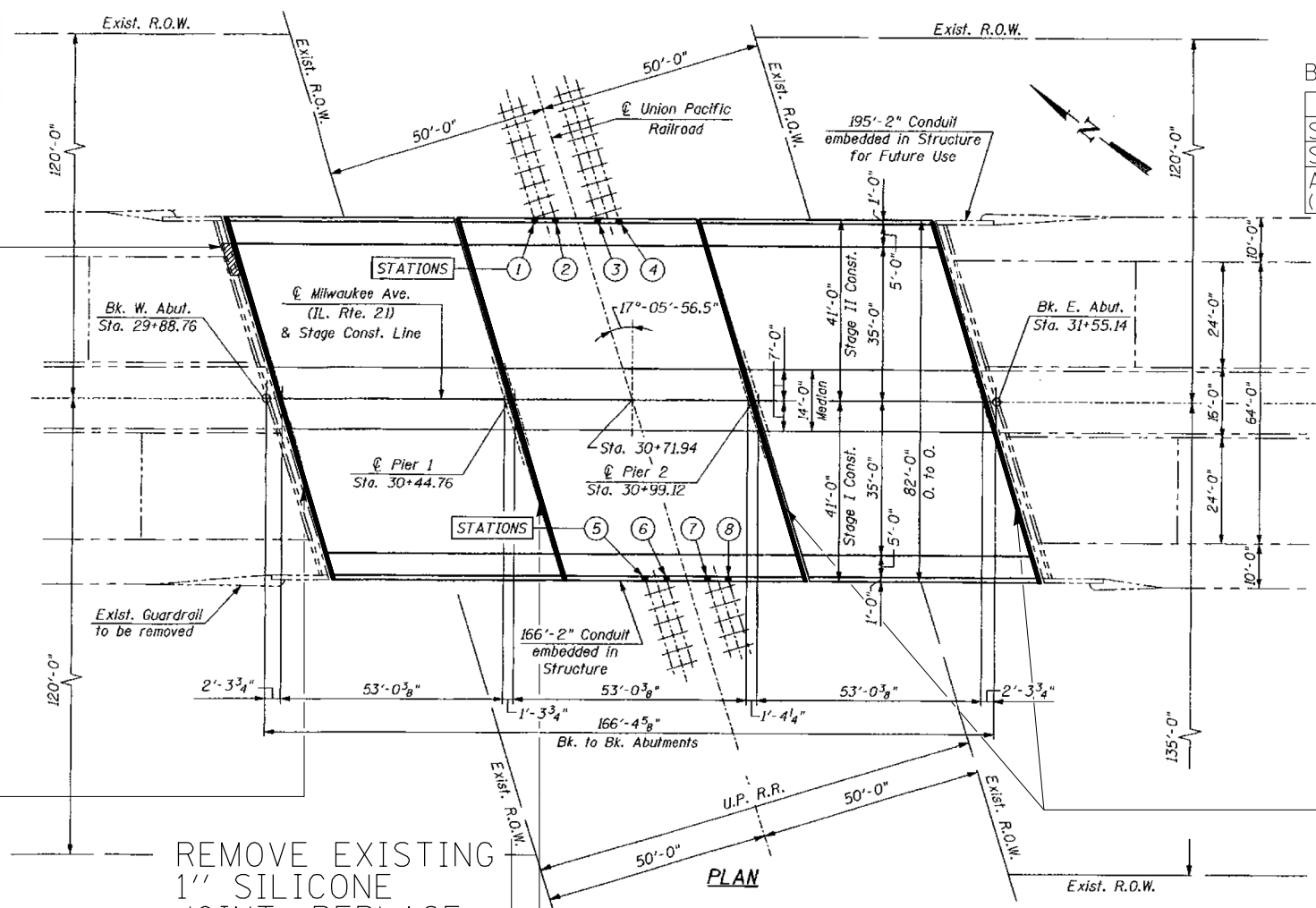
| ITEM | UNIT | QUANTITY |
|--------------------------------------|-------|----------|
| SILICONE JOINT SEALER, 1" | FOOT | 86 |
| SILICONE JOINT SEALER, 1 1/2" | FOOT | 258 |
| APPROACH SLAB REPAIR (PARTIAL DEPTH) | SQ YD | 2 |

1' x 12' P.D.
CONCRETE REPAIR

REMOVE EXISTING 1 1/2" SILICONE JOINT, REPLACE WITH 1 1/2" SILICONE JOINT SEALER

REMOVE EXISTING 1" SILICONE JOINT, REPLACE WITH 1" SILICONE JOINT SEALER

REMOVE EXISTING 1 1/2" SILICONE JOINT, REPLACE WITH 1 1/2" SILICONE JOINT SEALER



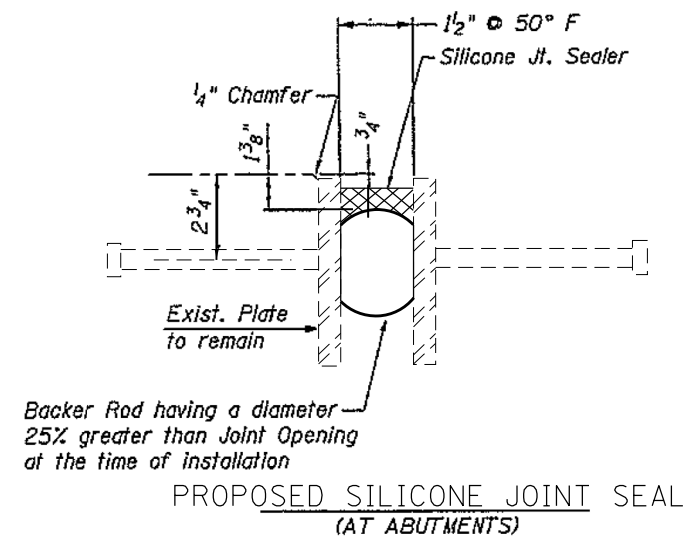
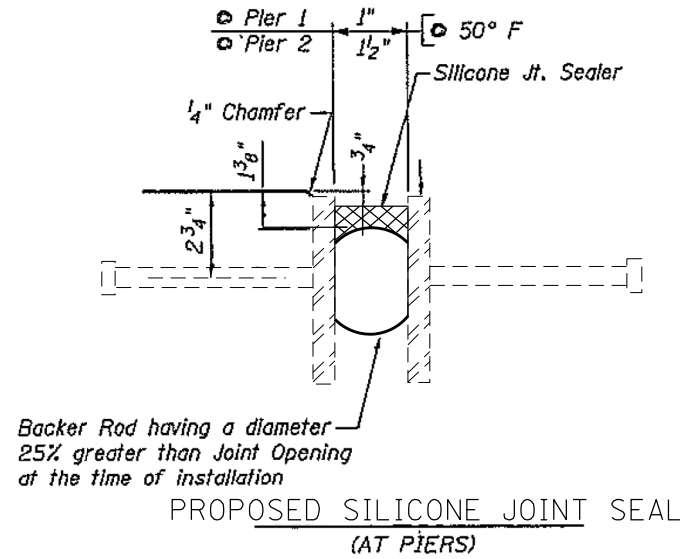
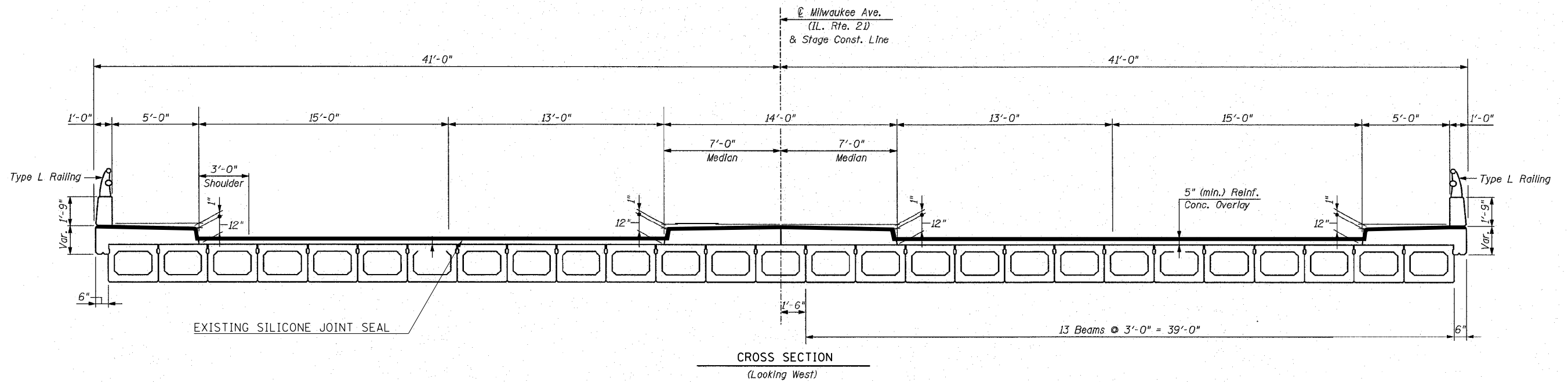
| | | | |
|---|------------------------|------------|-----------|
| FILE NAME = | USER NAME = hardnettbr | DESIGNED - | REVISED - |
| c:\pwork\work\pwork\hardnettbr\d0407384\044114-sht-plan.dgn | | DRAWN - | REVISED - |
| Default | PLOT DATE = 8/29/2014 | CHECKED - | REVISED - |
| | | DATE - | REVISED - |

**STATE OF ILLINOIS
DEPARTMENT OF TRANSPORTATION**

**LOCATION 2 (016-0243) IL 21 OVER UNION PACIFIC
RAILROAD, BRIDGE REPAIR DETAILS**

SCALE: SHEET OF SHEETS STA. TO STA.

| | | | | |
|------------------------|-------------------|-------------|---------------------------|-------------|
| F.A.P. RTE. 21 559 374 | SECTION 2014-049I | COUNTY COOK | TOTAL SHEETS 9 | SHEET NO. 6 |
| CONTRACT NO. 60Y63 | | | ILLINOIS FED. AID PROJECT | |



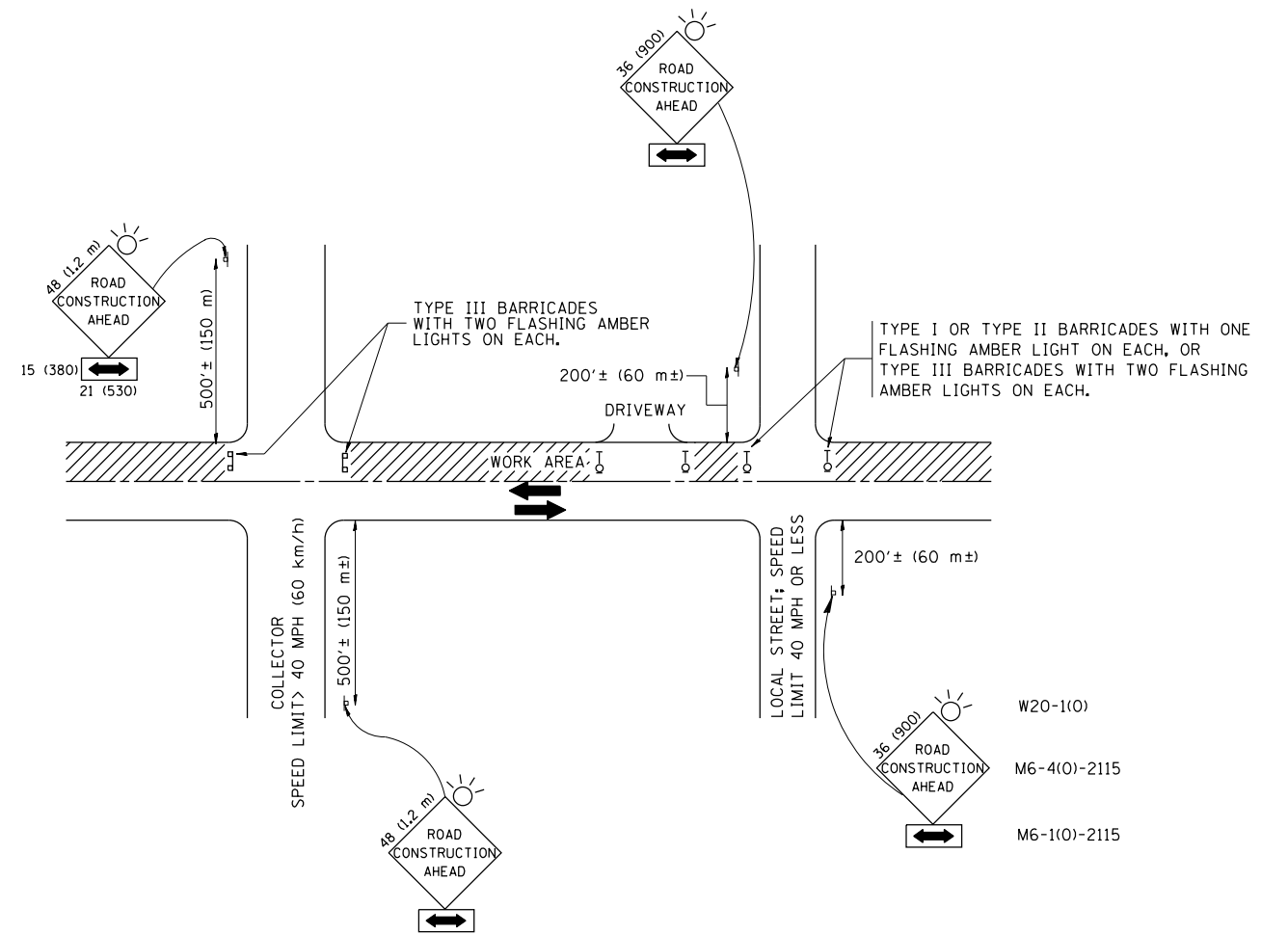
| | | | |
|---------------------------------------|-----------------------------|------------|-----------|
| FILE NAME = | USER NAME = hardnettbr | DESIGNED - | REVISED - |
| ct:\pwork\pwork\hardnettbr\d0407384\0 | 44114-sht-plen.dgn | DRAWN - | REVISED - |
| Default | PLOT SCALE = 100.0000' / 1" | CHECKED - | REVISED - |
| | PLOT DATE = 8/29/2014 | DATE - | REVISED - |

STATE OF ILLINOIS
DEPARTMENT OF TRANSPORTATION

LOCATION 2 (016-0243) IL 21 OVER UNION PACIFIC
RAILROAD, BRIDGE REPAIR DETAILS

SCALE: SHEET OF SHEETS STA. TO STA.

| | | | | |
|--------------------|-----------|--------|---------------------------|-----------|
| F.A.P. RTE. | SECTION | COUNTY | TOTAL SHEETS | SHEET NO. |
| 559 | 2014-049I | COOK | 9 | 7 |
| 2) 374 | | | | |
| CONTRACT NO. 60Y63 | | | ILLINOIS FED. AID PROJECT | |



TRAFFIC CONTROL AND PROTECTION FOR SIDE ROADS, INTERSECTIONS, AND DRIVEWAYS

NOTES:

- A. FOR NO LANE RESTRICTION ON THE SIDE ROAD OR DRIVEWAYS
 1. SIDE ROAD WITH A SPEED LIMIT OF 40 MPH (60 km/h) OR LESS AS SHOWN ON THE DRAWING AND AS DIRECTED BY THE ENGINEER:
 - a) ONE ROAD CONSTRUCTION AHEAD SIGN 36 x 36 (900x900) WITH A FLASHER AND FLAG MOUNTED ON IT APPROXIMATELY 200' (60 m) IN ADVANCE OF THE MAIN ROUTE.
 - b) THE CLOSED PORTION OF THE MAIN ROUTE SHALL BE PROTECTED BY BLOCKING WITH TYPE I, TYPE II OR TYPE III BARRICADES, 1/3 OF THE CROSS SECTION OF THE CLOSED PORTION.
 2. SIDE ROAD WITH A SPEED LIMIT GREATER THAN 40 MPH (60 km/h) AS SHOWN ON THE DRAWING AND AS DIRECTED BY THE ENGINEER:
 - a) ONE ROAD CONSTRUCTION AHEAD SIGN 48 x 48 (1.2 m x 1.2 m) WITH A FLASHER MOUNTED ON IT APPROXIMATELY 500' (150 m) IN ADVANCE OF THE MAIN ROUTE.
 - b) THE CLOSED PORTION OF THE MAIN ROUTE SHALL BE PROTECTED BY BLOCKING WITH TYPE III BARRICADES, 1/2 OF THE CROSS SECTION OF THE CLOSED PORTION.
 3. WHEN THE SIDE ROAD LIES BETWEEN THE BEGINNING OF THE MAINLINE SIGNING AND THE WORK ZONE, A SINGLE HEADED ARROW (M6-1) SHALL BE USED IN LIEU OF THE DOUBLE HEADED ARROW (M6-4).
- B. FOR A LANE CLOSURE ON A SIDE ROAD OR DRIVEWAY:

USE APPLICABLE PORTIONS OF THE TYPICAL APPLICATION OF TRAFFIC CONTROL DEVICES (STD. 701501, STD. 701606 OR THE APPROPRIATE STANDARD). THE SPACING OF SIGNS AND BARRICADES SHALL BE ADJUSTED FOR FIELD CONDITIONS AS DIRECTED BY THE ENGINEER. THE DIRECTIONAL ARROW SHALL BE COVERED OR REMOVED WHEN NO LONGER CONSISTENT WITH THE SIDE ROAD LANE CLOSURE.
- C. ADVANCE WARNING SIGNS ARE TO BE OMITTED ON DRIVEWAY UNLESS OTHERWISE NOTED.
- D. THE TRAFFIC CONTROL AND PROTECTION FOR SIDE ROADS, INTERSECTIONS, AND DRIVEWAYS SHALL BE INCIDENTAL TO THE COST OF SPECIFIED TRAFFIC CONTROL STANDARDS OR ITEMS.

All dimensions are in millimeters (inches) unless otherwise shown.

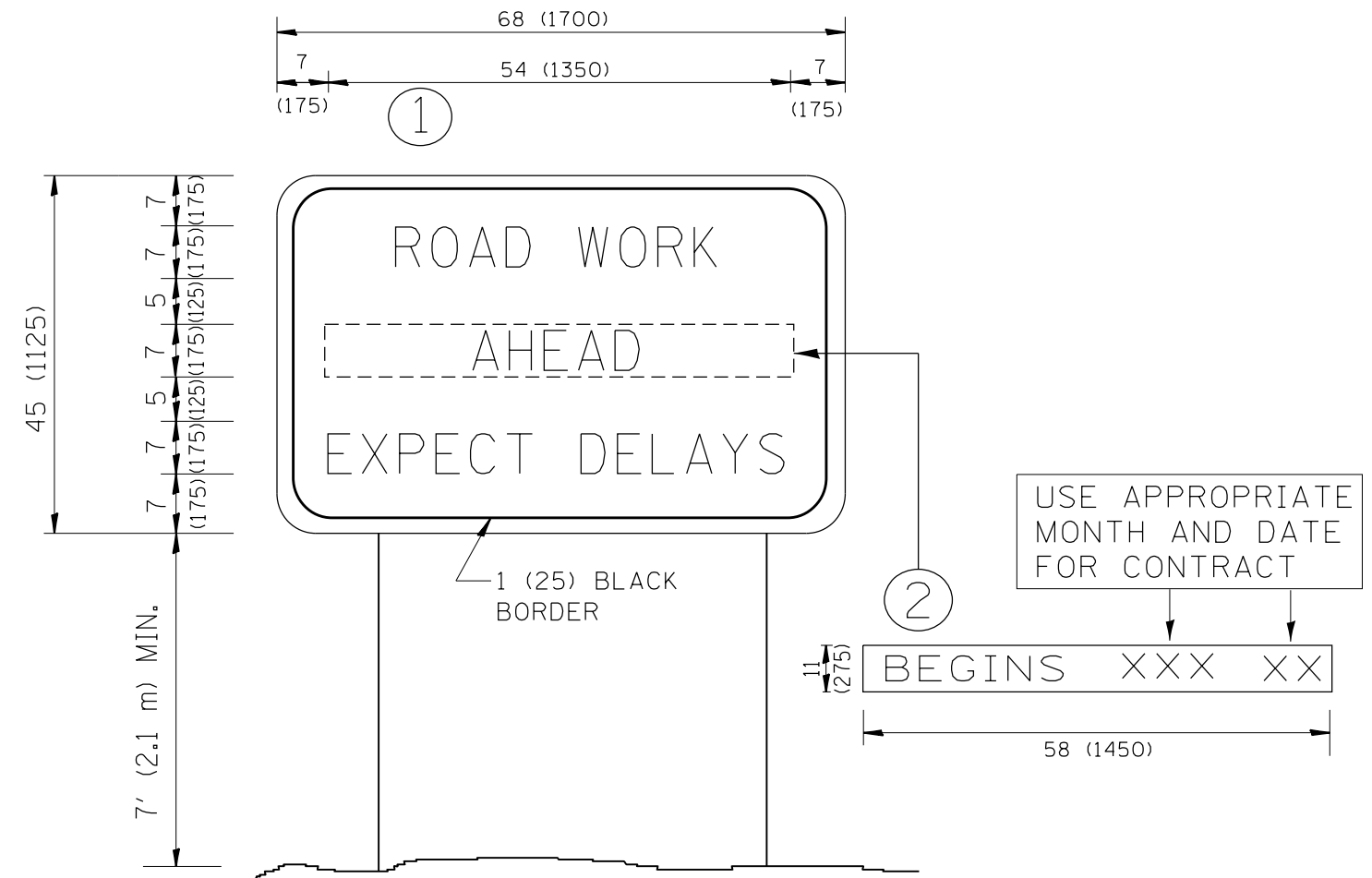
| | | | |
|---------------------------------------|------------------------------|----------------|---------------------------------|
| FILE NAME = | USER NAME = hardnettbr | DESIGNED - LHA | REVISED - J. OBERLE 10-18-95 |
| ei:\pwork\pwork\hardnettbr\d0407384\0 | 44114-shr-plan.dgn | DRAWN - | REVISED - A. HOUSEH 03-06-96 |
| | PLOT SCALE = 100.0000' / in. | CHECKED - | REVISED - A. HOUSEH 10-15-96 |
| | PLOT DATE = 8/29/2014 | DATE - 06-89 | REVISED - T. RAMMACHER 01-06-00 |

STATE OF ILLINOIS
DEPARTMENT OF TRANSPORTATION

TRAFFIC CONTROL AND PROTECTION FOR
SIDE ROADS, INTERSECTIONS, AND DRIVEWAYS

SCALE: NONE SHEET NO. 1 OF 1 SHEETS STA. TO STA.

| | | | | |
|---|-----------|--------|--------------------|-----------|
| F.A.P. RTE. | SECTION | COUNTY | TOTAL SHEETS | SHEET NO. |
| 1) 559 2) 374 | 2014-0491 | COOK | 9 | 8 |
| TC-10 | | | CONTRACT NO. 60Y63 | |
| FED. ROAD DIST. NO. 1 ILLINOIS FED. AID PROJECT | | | | |



NOTES:

1. USE BLACK LETTERING ON ORANGE BACKGROUND.
2. ERECT SIGNS IN ADVANCE OF THE LOCATION FOR THE "ROAD CONSTRUCTION AHEAD" SIGN AT LOCATIONS AS DIRECTED BY THE ENGINEER.
3. ERECT SIGN ① WITH INSTALLED PANEL ② ONE WEEK PRIOR TO THE START OF CONSTRUCTION.
4. REMOVE PANEL ② SOON AFTER THE START OF CONSTRUCTION.
5. SEE SPECIAL PROVISION FOR "TEMPORARY INFORMATION SIGNING" FOR ADDITIONAL INFORMATION.
6. ONE SIGN ASSEMBLY EQUALS 25.70 SQ. FT. (2.3 SQ. M.)
7. SHALL BE PAID FOR AS TEMPORARY INFORMATION SIGNING.

ALL DIMENSIONS ARE IN INCHES (MILLIMETERS) UNLESS OTHERWISE SHOWN.

| | | | | | | | | | | |
|--|------------------------------|------------|---------------------------------|---|---|---|---------|--------------------|--------------|-----------|
| FILE NAME = | USER NAME = hardnettbr | DESIGNED - | REVISED - R. MIRS 09-15-97 | STATE OF ILLINOIS DEPARTMENT OF TRANSPORTATION | ARTERIAL ROAD INFORMATION SIGN | F.A.P. RTE. | SECTION | COUNTY | TOTAL SHEETS | SHEET NO. |
| ct:\pw\work\pwidot\hardnettbr\d0407384\0 | 44114-sh-t-plan.dgn | DRAWN - | REVISED - R. MIRS 12-11-97 | | | 1) 559 | | COOK | 9 | 9 |
| | PLOT SCALE = 100.0000' / in. | CHECKED - | REVISED - T. RAMMACHER 02-02-99 | | | 2) 374 | TC-22 | CONTRACT NO. 60Y63 | | |
| | PLOT DATE = 8/29/2014 | DATE - | REVISED - C. JUCIUS 01-31-07 | | | FED. ROAD DIST. NO. 1 ILLINOIS FED. AID PROJECT | | | | |
| | | | | | SCALE: NONE | SHEET NO. 1 OF 1 SHEETS | STA. | TO STA. | | |