

STATE OF ILLINOIS  
DEPARTMENT OF TRANSPORTATION  
DIVISION OF HIGHWAYS

**PROPOSED  
HIGHWAY PLANS**

FAI 90 /94 /290 ROUTE (CIRCLE INTERCHANGE)

I-90/94: ROOSEVELT RD. TO WASHINGTON BLVD. & PEORIA ST. TO CLINTON ST.

I-290: ROOSEVELT RD. TO VAN BUREN ST. & ASHLAND AVE. TO CLINTON ST.

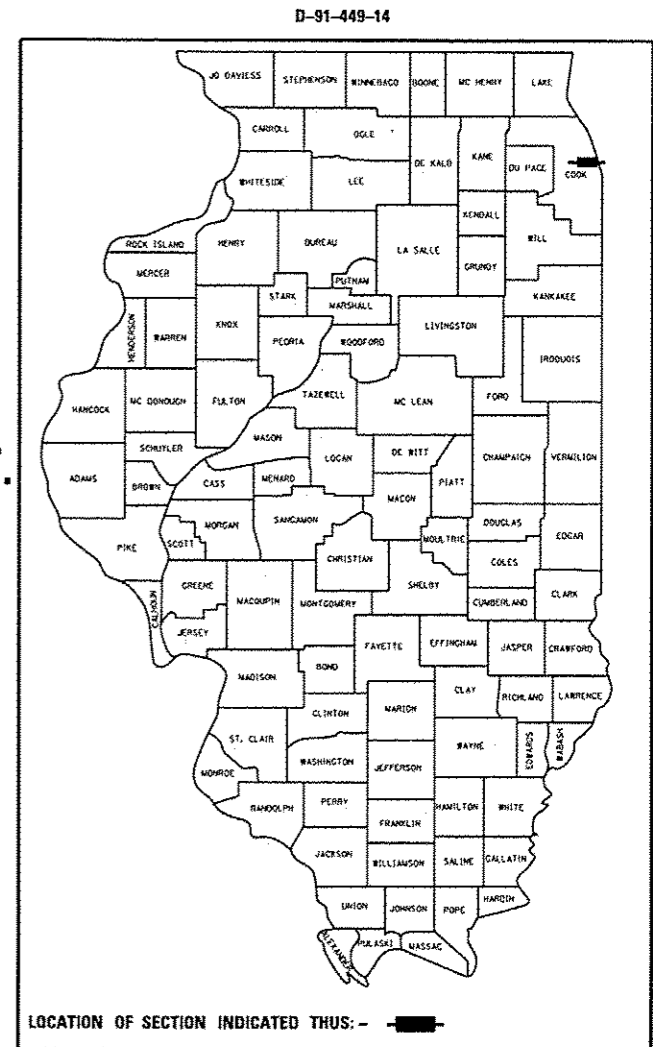
SECTION 2014-050LS

LANDSCAPING  
COOK COUNTY

C-91-449-14

F.A.I. RTE. 90/94/290	SECTION 2014-050LS	COUNTY COOK	TOTAL SHEETS 160	SHEET NO. 1
ILLINOIS CONTRACT NO. 60Y66				

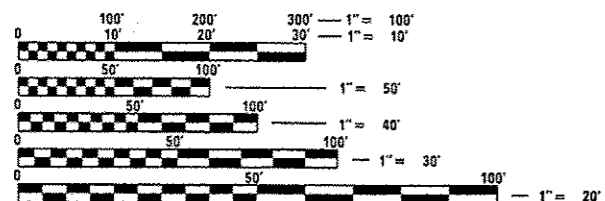
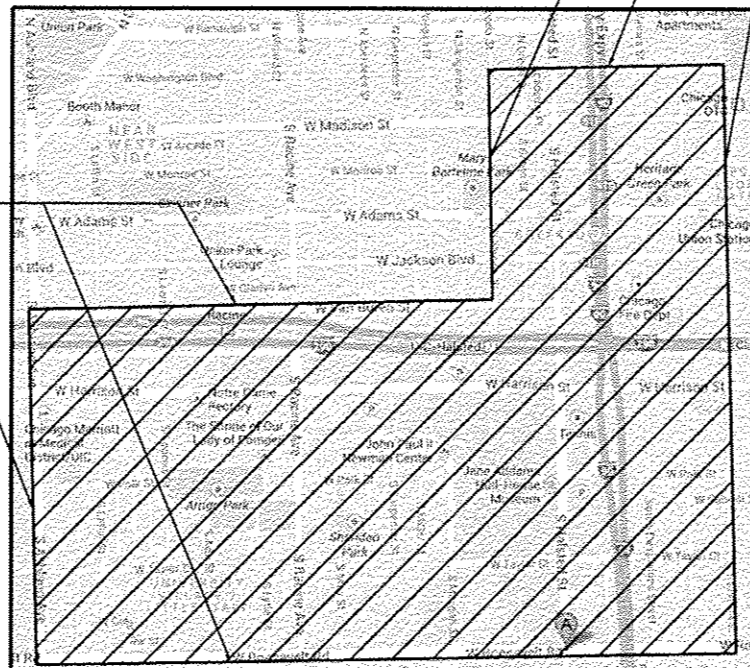
FOR INDEX OF SHEETS, SEE SHEET NO. 2



LIMITS ALONG I-90/94:  
ROOSEVELT RD. TO WASHINGTON BLVD. &  
PEORIA ST. TO CLINTON ST.

IMPROVEMENT LOCATED IN THE CITY OF CHICAGO

LIMITS ALONG I-290:  
ROOSEVELT RD. TO VAN BUREN ST. &  
ASHLAND AVE. TO CLINTON ST.



FULL SIZE PLANS HAVE BEEN PREPARED USING STANDARD ENGINEERING SCALES. REDUCED SIZED PLANS WILL NOT CONFORM TO STANDARD SCALE. IN MAKING MEASUREMENTS ON REDUCED PLANS, THE ABOVE SCALES MAY BE USED.

48 HOURS PRIOR TO START OF CONSTRUCTION, THE CONTRACTOR MUST TELEPHONE C.U.A.N. (CHICAGO UTILITY ALERT NETWORK) AT (312) 744-7000 FOR UNDERGROUND UTILITY LOCATIONS

PROJECT ENGINEER: MELISSA DEL ROSARIO (847) 705-4391  
FABIOLA QUIROZ (847) 705-4596  
PROJECT MANAGER: RICHARD WANNER  
CONTRACT NO. 60Y66

STATE OF ILLINOIS  
DEPARTMENT OF TRANSPORTATION  
DIVISION OF HIGHWAYS

SUBMITTED August 8, 2014

*John P. Baranzello*  
DEPUTY DIRECTOR OF HIGHWAYS, REGION ENGINEER

Oct 17, 2014  
*John D. Baranzello* P.E.  
ENGINEER OF DESIGN AND ENVIRONMENT

Oct 17, 2014  
*Omer Osman* P.E.  
DIRECTOR OF HIGHWAYS, CHIEF ENGINEER

PRINTED BY THE AUTHORITY  
OF THE STATE OF ILLINOIS