

STATE OF ILLINOIS  
DEPARTMENT OF TRANSPORTATION  
DIVISION OF HIGHWAYS

F.A.I. RTE. 90/94/290	SECTION 2014-050LS	COUNTY COOK	TOTAL SHEETS 160	SHEET NO. 1
ILLINOIS CONTRACT NO. 60Y66				

FOR INDEX OF SHEETS, SEE SHEET NO. 2

# PROPOSED HIGHWAY PLANS

FAI 90 /94 /290 ROUTE (CIRCLE INTERCHANGE)

I-90/94: ROOSEVELT RD. TO WASHINGTON BLVD. & PEORIA ST. TO CLINTON ST.

I-290: ROOSEVELT RD. TO VAN BUREN ST. & ASHLAND AVE. TO CLINTON ST.

SECTION 2014-050LS

LANDSCAPING  
COOK COUNTY

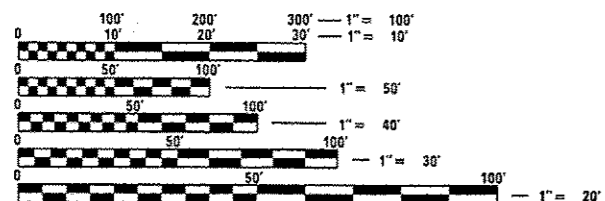
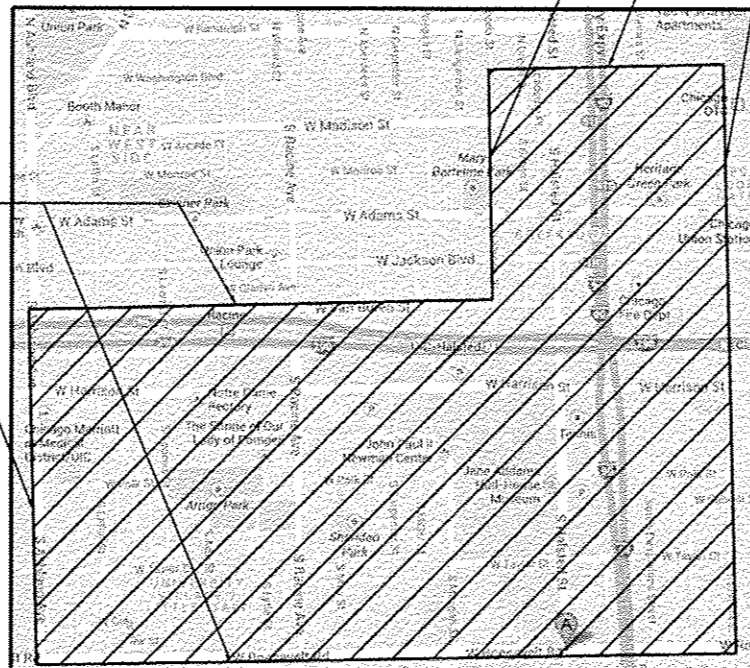
C-91-449-14



LIMITS ALONG I-90/94:  
ROOSEVELT RD. TO WASHINGTON BLVD. &  
PEORIA ST. TO CLINTON ST.

IMPROVEMENT LOCATED IN THE CITY OF CHICAGO

LIMITS ALONG I-290:  
ROOSEVELT RD. TO VAN BUREN ST. &  
ASHLAND AVE. TO CLINTON ST.



FULL SIZE PLANS HAVE BEEN PREPARED USING STANDARD ENGINEERING SCALES. REDUCED SIZED PLANS WILL NOT CONFORM TO STANDARD SCALE, IN MAKING MEASUREMENTS ON REDUCED PLANS, THE ABOVE SCALES MAY BE USED.

48 HOURS PRIOR TO START OF CONSTRUCTION, THE CONTRACTOR MUST TELEPHONE C.U.A.N. (CHICAGO UTILITY ALERT NETWORK) AT (312) 744-7000 FOR UNDERGROUND UTILITY LOCATIONS

PROJECT ENGINEER: MELISSA DEL ROSARIO (847) 705-4391  
FABIOLA QUIROZ (847) 705-4596  
PROJECT MANAGER: RICHARD WANNER  
CONTRACT NO. 60Y66

STATE OF ILLINOIS  
DEPARTMENT OF TRANSPORTATION  
DIVISION OF HIGHWAYS

SUBMITTED August 8, 2014

*John Kistner*  
DEPUTY DIRECTOR OF HIGHWAYS, REGION ENGINEER

Oct 17, 2014  
*John D. Baranzello, P.E.*  
ENGINEER OF DESIGN AND ENVIRONMENT

Oct 17, 2014  
*Omer Osman, P.E.*  
DIRECTOR OF HIGHWAYS, CHIEF ENGINEER

PRINTED BY THE AUTHORITY  
OF THE STATE OF ILLINOIS

**INDEX OF SHEETS**

SHEET NO.	DESCRIPTION
1	COVER SHEET
2	INDEX OF SHEETS, GENERAL NOTES, & STATE STANDARDS
3-4	SUMMARY OF QUANTITIES
5	SCHEDULE OF LANDSCAPE ITEMS
6	TREE DETAILS
7	WORK ORDER
8-9	CDOT - TREE PLANTING LOCATIONS
10	UIC - TREE PLANTING LOCATIONS
11-12	CDOT - TREE WATERING & TREE CARE LOCATIONS
13-14	UIC - TREE WATERING & TREE CARE LOCATIONS
15-16	DISTRICT DETAILS

**HIGHWAY STANDARDS**

- 701501-06 URBAN LANE CLOSURE, 2L, 2W, UNDIVIDED
- 701601-09 URBAN LANE CLOSURE, MULTILANE, 1W OR 2W WITH NON TRAVERSABLE MEDIAN
- 701701-09 URBAN LANE CLOSURE, MULTILANE INTERSECTION
- 701801-05 SIDEWALK, CORNER OR CROSSWALK CLOSURE
- 701901-03 TRAFFIC CONTROL DEVICES

701006-05  
 701101-04  
 701427-02

**GENERAL NOTES**

PRIOR TO THE START OF CONSTRUCTION, THE CONTRACTOR MUST SUBMIT A PROPOSED CONSTRUCTION SCHEDULE IN A FORMAT APPROVED BY THE ENGINEER. NO WORK WILL BE PERMITTED TO PROCEED UNTIL THE PROPOSED SCHEDULE IS REVIEWED AND APPROVED BY THE ENGINEER.

IN AREAS WHERE MULTIPLE LOCATIONS ARE PROPOSED TO BE CONSTRUCTED, THE CONTRACTOR WILL BE REQUIRED TO STAGE WORK SO AS NOT TO ADVERSELY AFFECT THE FLOW OF PEDESTRIAN VEHICULAR TRAFFIC WITHIN THE GENERAL AREA. THE PROPOSED CONSTRUCTION SCHEDULE SHOULD REFLECT A PROGRESSION OF WORK THAT WILL MAINTAIN TRAFFIC TO THE SATISFACTION OF THE ENGINEER.

THE CITY RESERVES THE RIGHT TO ORDER, IN WRITING, CHANGES IN THE WORK OR THE CONTRACT TIME. THESE CHANGES MAY CONSIST OF ADDITIONS, DELETIONS OR OTHER REVISIONS, AT THE DISCRETION OF THE CITY.

WHEN UNFORESEEN CIRCUMSTANCES IMPACT THE CONTRACTOR'S APPROVED CONSTRUCTION SCHEDULE, IT MAY BE NECESSARY TO ADJUST OR REVISE THE SCHEDULE IN ORDER TO MAINTAIN PROGRESS AND PROVIDE FOR PEDESTRIAN AND VEHICULAR SAFETY. THE CONTRACTOR WILL COOPERATE FULLY WITH THE CITY IN THIS REGARD.

LANE CLOSURES, WORK ZONE RESTRICTIONS, REVISED WORK DAY HOURS AND WEEKEND OR HOLIDAY WORK SCHEDULES ARE SUBJECT TO THE APPROVAL OF THE COMMISSIONER. THE CONTRACTOR MUST RECEIVE WRITTEN AUTHORIZATION, EITHER BY PERMIT OR NOTIFICATION BY THE ENGINEER, BEFORE PROCEEDING WITH WORK UNDER THESE CIRCUMSTANCES.

BEFORE STARTING ANY EXCAVATION ON CDOT R.O.W., THE CONTRACTOR SHALL CALL C.U.A.N. (CHICAGO UTILITY ALERT NETWORK) AT 312-744-7000 FOR FIELD LOCATIONS OF BURIED ELECTRICAL, TELEPHONE, AND GAS FACILITIES. (48 HOUR NOTIFICATION IS REQUIRED).

BEFORE STARTING ANY EXCAVATION ON THE UIC R.O.W., THE CONTRACTOR SHALL CALL 312-996-2883 FOR FIELD LOCATIONS OF BURIED ELECTRICAL FACILITIES, 312-996-2816 FOR FIELD LOCATIONS OF BURIED IRRIGATION, AND 312-996-0746 FOR FIELD LOCATIONS OF BURIED FIBER OPTIC FACILITIES. THE CONTRACTOR SHALL CALL 312-413-5800 BEFORE STARTING ANY WORK ON UIC PARKING LOTS. SEVEN (7) DAY NOTIFICATION IS REQUIRED.

THE CONTRACTOR SHALL COORDINATE ACTIVITIES WITH UTILITY COMPANIES, THE CITY OF CHICAGO, AND THE UIC CAMPUS.

THE CONTRACTOR WILL NOT BE ALLOWED TO SET UP A YARD OR FIELD OFFICE ON STATE PROPERTY WITHOUT WRITTEN PERMISSION FROM I.D.O.T. OR THE CITY OF CHICAGO.

PAY ITEMS IN THE SUMMARY OF QUANTITIES HAVE BEEN ESTIMATED, IF, IN THE ENGINEER'S OPINION, THE WORK IS NOT REQUIRED, THE ITEM WILL BE DEDUCTED FROM THE CONTRACT AND NO ADDITIONAL COMPENSATION TO THE CONTRACTOR WILL BE ALLOWED.

ANY WORK WITHIN A LANDSCAPED MEDIAN REQUIRES A LANE CLOSURE AND USE OF AN ARROW BOARD PER IDOT SPECIFICATIONS.

CONTRACTOR MUST ACQUIRE PERMITS FROM CHICAGO DEPARTMENT OF TRANSPORTATION (CDOT), CHICAGO BUREAU OF FORESTRY (BOF), AND CHICAGO DEPARTMENT OF WATER MANAGEMENT. THE PERMITS ARE DETAILED IN CDOT BOOK 3, PAGE DS-16, SUBMITTALS ITEM 7.

THE CONTRACTOR SHALL COORDINATE ALL ACTIVITIES WITH IDOT CONTRACT 60X37 (LANDSCAPE).

THE CONTRACTOR SHALL ORDER PLANT MATERIAL AND SUBMIT COMPLETED PLANT INSPECTION SHEETS TO IDOT BY JANUARY 31, 2015 TO ASSURE PLANT AVAILABILITY FOR THE SPRING PLANTING SEASON.

CONTRACTOR SHALL PERFORM DUE DILIGENCE IN LOCATING SPECIFIED PLANT MATERIAL.

NO SUBSTITUTIONS OF PLANT MATERIAL, QUANTITIES OR SIZES SHALL BE ALLOWED UNLESS APPROVED BY THE ENGINEER.

EXCAVATION BY AUGER OR OTHER MECHANICAL MEANS IS NOT ACCEPTABLE. HAND DIGGING OF ALL PLANT HOLES IS REQUIRED.

THE CONTRACTOR SHALL USE CARE IN GRADING OR EXCAVATING NEAR ANY AND ALL EXISTING ITEMS THAT WILL NOT BE REMOVED. ANY DAMAGE DONE TO EXISTING ITEMS BY THE CONTRACTOR SHALL BE REPAIRED AT THE CONTRACTOR'S OWN EXPENSE TO THE SATISFACTION OF THE ENGINEER.

WHENEVER, DURING CONSTRUCTION OPERATIONS, ANY LOOSE MATERIAL IS DEPOSITED IN THE FLOW LINE OF DRAINAGE STRUCTURES SUCH THAT THE NATURAL FLOW OF WATER IS OBSTRUCTED, IT SHALL BE REMOVED AT THE CLOSE OF EACH WORKING DAY. AT THE CONCLUSION OF CONSTRUCTION OPERATIONS, ALL UTILITY STRUCTURES SHALL BE FREE FROM DIRT AND DEBRIS. THE WORK SPECIFIED ABOVE WILL NOT BE PAID FOR SEPARATELY BUT SHALL BE INCLUDED IN THE COST FOR CATCH BASINS AND MANHOLES TO BE ADJUSTED IN THIS CONTRACT.

ANY EXISTING STORM SEWER DAMAGED BY THE CONTRACTOR DURING CONSTRUCTION SHALL BE REPLACED BY THE CONTRACTOR AT NO COST TO THE CITY.

WATERING METHOD WILL BE APPROVED BY THE ENGINEER PRIOR TO WATERING.

**COMMITMENT**

NO WORK SHALL BE DONE PAST FRIDAY, MAY 8TH BY THE UIC FORUM AND THE UIC PAVILLION DUE TO SPECIAL SCHOOL EVENTS. ALL INSTALLATION AND RESTORATION WORK WITHIN THESE AREAS SHALL BE COMPLETED BY FRIDAY, MAY 8TH.

FILE NAME *	USER NAME * delrosarions	DESIGNED - _____	REVISED - _____	<b>STATE OF ILLINOIS DEPARTMENT OF TRANSPORTATION</b>	<b>INDEX OF SHEETS, GENERAL NOTES, &amp; STATE STANDARDS</b>	F.A.I. RTE. 90/94/290	SECTION 2014-050LS	COUNTY COOK	TOTAL SHEETS 16	SHEET NO. 2
o:\p\work\delrosarions\delrosarions\2305907	0107014-shs-Landscape.dgn	DRAWN - _____	REVISED - _____		SCALE: _____ SHEET _____ OF _____ SHEETS STA. _____ TO STA. _____					
Default	PLOT SCALE * 1/8"=1'-0"	CHECKED - _____	REVISED - _____							
	PLOT DATE * 01/14/2014	DATE - _____	REVISED - _____							

Rev.

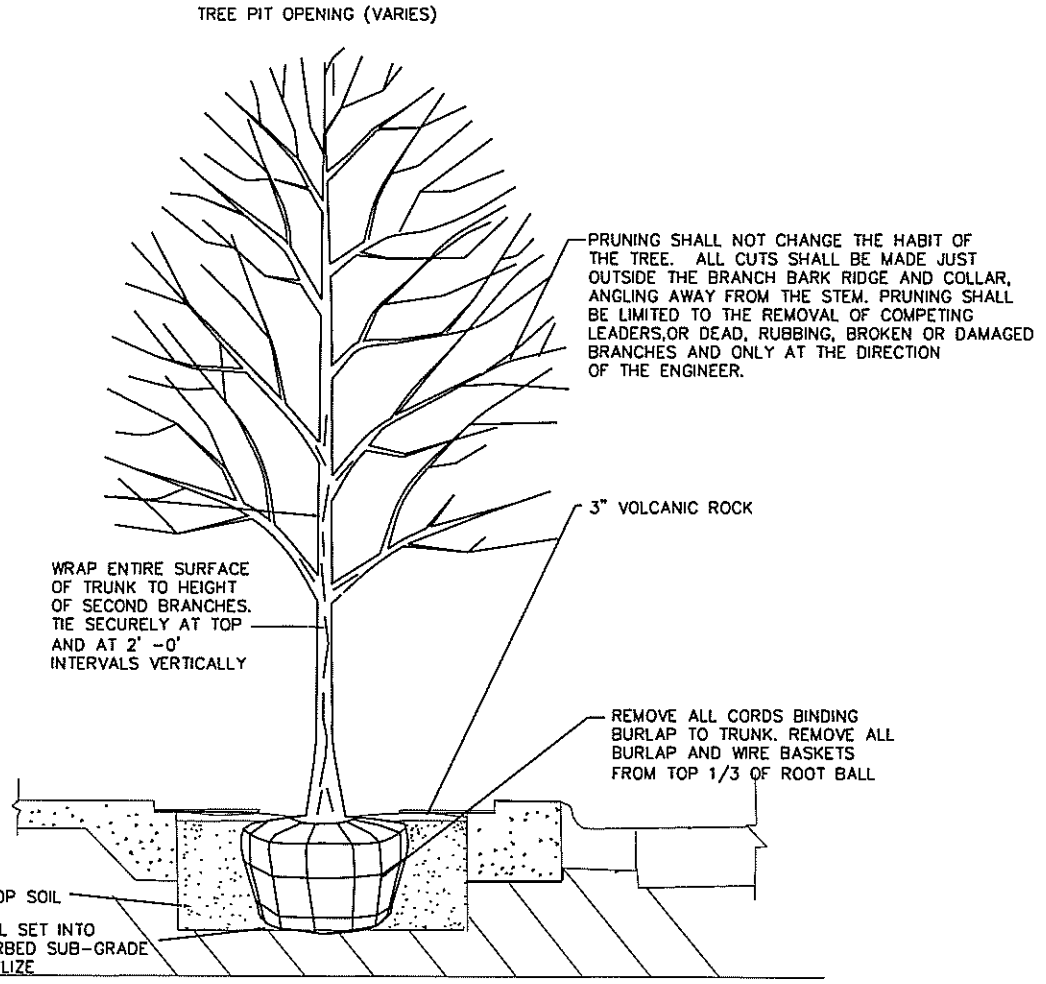
SUMMARY OF QUANTITIES			URBAN 100% STATE TOTAL QUANTITIES	CONSTRUCTION TYPE CODE				
CODE NO	ITEM	UNIT		0031				
B2001400	TREE, CORNUS MAS 'GOLDEN GLORY' (GOLDEN GLORY CORNELIAN CHERRY DOGWOOD), 6' HEIGHT, CLUMP FORM, BALLED AND BURLAPPED	EACH	7	7				
A2008090	TREE, TILIA CORDATA GLENLEVEN (GLENLIVEN LITTLELEAF LINDEN), 3" CALIPER, BALLED AND BURLAPPED	EACH	6	6				
A2005444	TREE, MAACKIA AMURENSIS (AMUR MAACKIA), 3" CALIPER, BALLED AND BURLAPPED	EACH	2	2				
A2005600	TREE, OSTRYA VIRGINIANA (IRONWOOD), 7' HEIGHT, CLUMP FORM, BALLED AND BURLAPPED	EACH	1	1				
A2008400	TREE, TILIA MONGOLICA HARVEST GOLD (HARVEST GOLD LINDEN), 2-1/2" CALIPER, BALLED AND BURLAPPED	EACH	2	2				
X6327800	TREE PLANTING IN CITY PARKWAYS	EACH	80	80				
20101700	SUPPLEMENTAL WATERING	UNIT	200	200				
67100100	MOBILIZATION	L SUM	1	1				
A2001028	TREE, ACER RUBRUM (BOWHALL), 3" CALIPER, BALLED AND BURLAPPED	EACH	6	6				

SUMMARY OF QUANTITIES			URBAN 100% STATE TOTAL QUANTITIES	CONSTRUCTION TYPE CODE				
CODE NO	ITEM	UNIT		0031				
A2001424	TREE, ACER SACCHARINUM AUTUMN BLAZE (AUTUMN BLAZE SILVER MAPLE), 3" CALIPER, BALLED AND BURLAPPED	EACH	13	13				
A2002824	TREE, CATALPA SPECIOSA (NORTHERN CATALPA), 3" CALIPER, BALLED AND BURLAPPED	EACH	3	3				
A2002920	TREE, CELTIS OCCIDENTALIS (COMMON HACKBERRY), 2-1/2" CALIPER, BALLED AND BURLAPPED	EACH	4	4				
A2004514	TREE, GINKGO BILOBA AUTUMN GOLD (AUTUMN GOLD GINKGO), 2-1/2" CALIPER BALLED AND BURLAPPED	EACH	5	5				
A2004724	TREE, GLEDITSIA TRIACANTHOS INERMIS SHADEMASTER (SHADEMASTER THORNLESS COMMON HONEYLOCUST), 3" CALIPER, BALLED AND BURLAPPED	EACH	11	11				
A2005024	TREE, GYMNOCLADUS DIOICUS (KENTUCKY COFFEETREE), 3" CALIPER, BALLED AND BURLAPPED	EACH	30	30				
A2005040	TREE, GYMNOCLADUS DIOICUS ESPRESSO-JFS (ESPRESSO KENTUCKY COFFEETREE), 2-1/2" CALIPER, BALLED AND BURLAPPED	EACH	1	1				

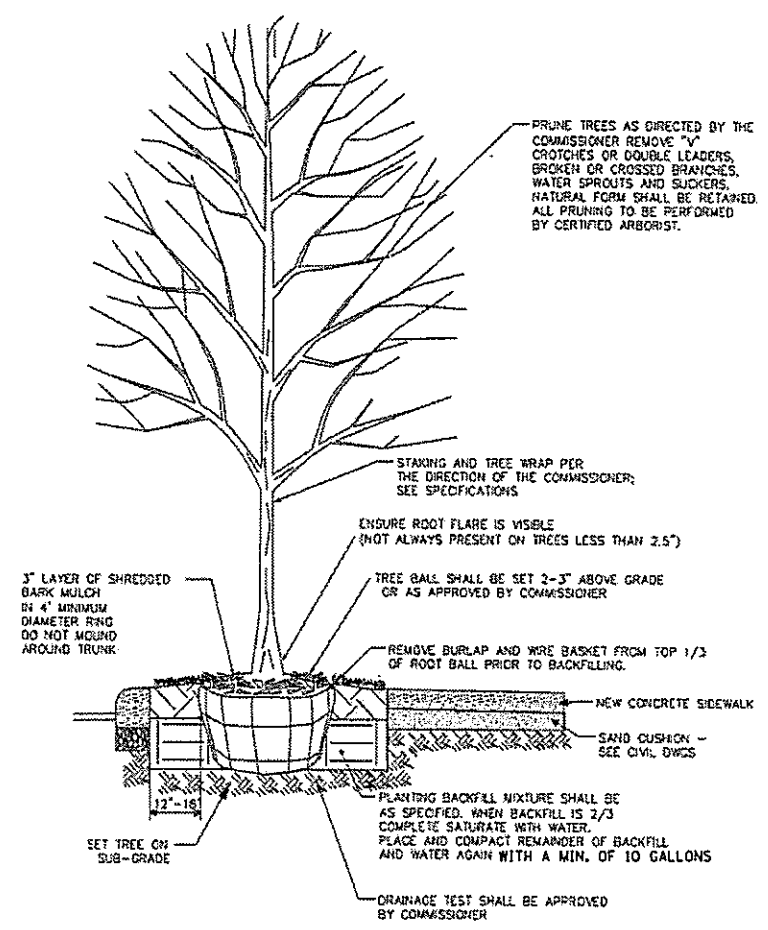
SUMMARY OF QUANTITIES			URBAN 100% STATE TOTAL QUANTITIES	CONSTRUCTION TYPE CODE				
CODE NO	ITEM	UNIT		0031				
A2006520	TREE, QUERCUS BICOLOR (SWAMP WHITE OAK), 2-1/2" CALIPER, BALLED AND BURLAPPED	EACH	5	5				
A2006820	TREE, QUERCUS MUEHLENBERGII (CHINKAPIN OAK), 2-1/2" CALIPER, BALLED AND BURLAPPED	EACH	3	3				
A2007624	TREE, TAXODIUM DISTICHUM (COMMON BALD CYPRESS), 3" CALIPER, BALLED AND BURLAPPED	EACH	3	3				
A2007724	TREE, TAXODIUM DISTICHUM SHAWNEE BRAVE (SHAWNEE BRAVE BALD CYPRESS), 3" CALIPER, BALLED AND BURLAPPED	EACH	6	6				
A2008470	TREE, ULMUS AMERICANA (PRINCETON/PRINCETON AMERICAN ELM), 2-1/2" CALIPER, BALLED AND BURLAPPED	EACH	3	3				
A2008750	TREE, ULMUS X PATRIOT (PATRIOT ELM), 3" CALIPER, TREE FORM, BALLED AND BURLAPPED	EACH	4	4				
A2018720	TREE, ULMUS CARPINIFOLIA MORTON, (ACCOLADE ELM), 2-1/2" CALIPER, BALLED AND BURLAPPED	EACH	3	3				
B2000120	TREE, ACER CAMPESTRE (HEDGE MAPLE), 2-1/2" CALIPER, TREE FORM, BALLED AND BURLAPPED	EACH	1	1				

SUMMARY OF QUANTITIES			URBAN 100% STATE TOTAL QUANTITIES	CONSTRUCTION TYPE CODE				
CODE NO	ITEM	UNIT		0031				
B2000768	TREE, AMELANCHIER X GRANDIFLORA AUTUMN BRILLIANCE (AUTUMN BRILLIANCE SERVICE BERRY), 7' HEIGHT, SHRUB FORM, BALLED AND BURLAPPED	EACH	12	12				
B2001166	TREE, CERCIS CANADENSIS (EASTERN REDBUD), 6' HEIGHT, CLUMP FORM, BALLED AND BURLAPPED	EACH	3	3				
B2004120	TREE, MALUS PRAIRIFIRE (PRAIRIFIRE CRABAPPLE), 2-1/2" CALIPER, TREE FORM, BALLED AND BURLAPPED	EACH	4	4				
B2004520	TREE, MALUS RED JEWEL (RED JEWEL CRAB APPLE), 2-1/2" CALIPER, TREE FORM, BALLED AND BURLAPPED	EACH	14	14				
B2006380	TREE, SYRINGA RETICULATA SUMMER SNOW SUMMER SNOW JAPANESE TREE LILAC), 2-1/2" CALIPER, TREE FORM, BALLED AND BURLAPPED	EACH	5	5				
D2003184	EVERGREEN, PSUEDOTSUGA MENZIESII (DOUGLAS FIR), 7' HEIGHT, BALLED AND BURLAPPED	EACH	2	2				
K0026700	TREE CARE	EACH	300	300				
X0322958	TREE PLANTING IN URBAN STRUCTURES	EACH	56	56				





TREE PIT - TREE PLANTING DETAIL  
N.T.S.



① PARKWAY TREE PLANTING DETAIL

NTS

FILE NAME =	USER NAME = del-roarions	DESIGNED - _____	REVISED - _____	<b>STATE OF ILLINOIS DEPARTMENT OF TRANSPORTATION</b>	<b>TREE PLANTING DETAILS</b>			F.A.I. RTE.	SECTION	COUNTY	TOTAL SHEETS	SHEET NO.
ci:\pwork\pvidat\del-roarions\2365897	D187814-shs-Landscape.dgn	DRAWN - _____	REVISED - _____		90/94/290	2014-050LS	COOK	16	6			
Default	PLOT SCALE = 1/8" = 1'-0"	CHECKED - _____	REVISED - _____		SCALE: _____ SHEET _____ OF _____ SHEETS STA. _____ TO STA. _____			CONTRACT NO. 60Y66				
	PLOT DATE = 8/14/2014	DATE - _____	REVISED - _____		ILLINOIS FED. AID PROJECT							





# CDOT - TREE PLANTING LOCATIONS

ADDRESS NUMBER	DIRECTION	STREET	TYPE		SIZE	SCIENTIFIC NAME	COMMON NAME	QTY
			OPEN PIT	PARKWAY				
901	S	ABERDEEN	1		3.0"	TAXODIUM DISTICHUM 'SHAWNEE BRAVE'	SHAWNEE BRAVE BALD CYPRESS	1
707	S	ASHLAND	2		3.0'	GLEDITSIA TRIACANTHOS INERMIS 'SHADEMASTER'	SHADEMASTER HONEYLOCUST	2
811	S	ASHLAND	1		3.0'	GLEDITSIA TRIACANTHOS INERMIS 'SHADEMASTER'	SHADEMASTER HONEYLOCUST	1
1111	S	ASHLAND	1		3.0"	GYMNOCLADUS DIOICUS	KENTUCKY COFFEE TREE	1
401	S	CLINTON	3		3.0"	GLEDITSIA TRIACANTHOS INERMIS 'SHADEMASTER'	SHADEMASTER HONEYLOCUST	3
1551	W	CONGRESS		1	3.0"	GYMNOCLADUS DIOICUS	KENTUCKY COFFEE TREE	1
15	S	HALSTED	2		3.0"	GYMNOCLADUS DIOICUS	KENTUCKY COFFEE TREE	2
128	S	HALSTED	1		3.0"	GYMNOCLADUS DIOICUS	KENTUCKY COFFEE TREE	1
1351	W	HARRISON	3		3.0"	GYMNOCLADUS DIOICUS	KENTUCKY COFFEE TREE	3
1353	W	HARRISON	2		2.5"	QUERCUS BICOLOR	SWAMP WHITE OAK	2
728	W	JACKSON	1		3.0"	GLEDITSIA TRIACANTHOS INERMIS 'SHADEMASTER'	SHADEMASTER HONEYLOCUST	1
130	S	JEFFERSON	1		3.0"	GYMNOCLADUS DIOICUS	KENTUCKY COFFEE TREE	1
221	S	JEFFERSON	3		3.0"	GYMNOCLADUS DIOICUS	KENTUCKY COFFEE TREE	3
231	S	JEFFERSON	3		3.0"	GYMNOCLADUS DIOICUS	KENTUCKY COFFEE TREE	3
301	S	JEFFERSON	2		3.0"	GYMNOCLADUS DIOICUS	KENTUCKY COFFEE TREE	2
1123	S	JEFFERSON	1		3.0"	GLEDITSIA TRIACANTHOS INERMIS 'SHADEMASTER'	SHADEMASTER HONEYLOCUST	1
1132	S	JEFFERSON	1		3.0"	GLEDITSIA TRIACANTHOS INERMIS 'SHADEMASTER'	SHADEMASTER HONEYLOCUST	1
816	S	LAFLIN		1	2.5"	TILIA MONGOLICA 'HARVEST GOLD'	HARVEST GOLD LINDEN	1
817	S	LAFLIN		1	2.5"	GINKGO BILOBA 'AUTUMN GOLD'	AUTUMN GOLD GINKGO	1
819	S	LAFLIN		1	3.0"	MAACKIA AMURENSIS	AMUR MAACKIA	1
826	S	LAFLIN		1	3.0"	MAACKIA AMURENSIS	AMUR MAACKIA	1
830	S	LAFLIN		1	3.0"	TAXODIUM DISTICHUM 'SHAWNEE BRAVE'	SHAWNEE BRAVE BALD CYPRESS	1
831	S	LAFLIN		1	3.0"	CELTIS OCCIDENTALIS	HACKBERRY	1
832	S	LAFLIN		1	2.5"	TILIA MONGOLICA 'HARVEST GOLD'	HARVEST GOLD LINDEN	1
835	S	LAFLIN		1	2.5"	GINKGO BILOBA 'AUTUMN GOLD'	AUTUMN GOLD GINKGO	1
836	S	LAFLIN		1	2.5"	CATALPA SPECIOSA	CATALPA	1
900	S	LAFLIN		1	2.5"	GINKGO BILOBA 'AUTUMN GOLD'	AUTUMN GOLD GINKGO	1
901	S	LAFLIN		1	2.5"	QUERCUS MUEHLENBERGII	CHINKAPIN OAK	1
907	S	LAFLIN		1	2.5"	CELTIS OCCIDENTALIS	HACKBERRY	1
921	S	LAFLIN		1	2.5"	QUERCUS BICOLOR	SWAMP WHITE OAK	1
929	S	LAFLIN	1		2.5"	SYRINGA RETICULATA 'SUMMER SNOW'	SUMMER SNOW JAPANESE TREE LILAC	1



ADDRESS NUMBER	DIRECTION	STREET	TYPE		SIZE	SCIENTIFIC NAME	COMMON NAME	QTY
			OPEN PIT	PARKWAY				
1203	W	LEXINGTON	1		2.5"	GINKGO BILOBA 'AUTUMN GOLD'	AUTUMN GOLD GINKGO	1
1207	W	LEXINGTON	1		2.5"	GINKGO BILOBA 'AUTUMN GOLD'	AUTUMN GOLD GINKGO	1
1213	W	LEXINGTON	1		2.5"	CATALPA SPECIOSA	CATALPA	1
1223	W	LEXINGTON	1		2.5"	QUERCUS MUEHLENBERGII	CHINKAPIN OAK	1
1225	W	LEXINGTON	1		3.0"	CELTIS OCCIDENTALIS	HACKBERRY	1
1229	W	LEXINGTON	1		2.5"	CATALPA SPECIOSA	CATALPA	1
1435	W	LEXINGTON	1		2.5"	QUERCUS BICOLOR	SWAMP WHITE OAK	1
319	S	LOOMIS		4	3"	ULMUS X PATRIOT	PATRIOT ELM	4
748	S	LOOMIS	1		2.5"	QUERCUS BICOLOR	SWAMP WHITE OAK	1
801	S	LOOMIS	1		2.5"	QUERCUS MUEHLENBERGII	CHINKAPIN OAK	1
848	W	MADISON	1		3.0"	GYMNOCLADUS DIOICUS	KENTUCKY COFFEE TREE	1
1409	W	POLK	1		3.0"	TAXODIUM DISTICHUM 'SHAWNEE BRAVE'	SHAWNEE BRAVE BALD CYPRESS	1
1501	W	POLK	1		3.0"	CELTIS OCCIDENTALIS	HACKBERRY	1
200	S	RACINE	1		3.0"	TAXODIUM DISTICHUM 'SHAWNEE BRAVE'	SHAWNEE BRAVE BALD CYPRESS	1
800	S	RACINE	1		3.0"	GYMNOCLADUS DIOICUS	KENTUCKY COFFEE TREE	1
808	S	RACINE	1		3.0"	GYMNOCLADUS DIOICUS	KENTUCKY COFFEE TREE	1
608	W	ROOSEVELT	1		3.0"	GYMNOCLADUS DIOICUS	KENTUCKY COFFEE TREE	1
612	W	ROOSEVELT	1		3.0"	GYMNOCLADUS DIOICUS	KENTUCKY COFFEE TREE	1
614	W	ROOSEVELT	1		3.0"	GYMNOCLADUS DIOICUS	KENTUCKY COFFEE TREE	1
616	W	ROOSEVELT	2		3.0"	GYMNOCLADUS DIOICUS	KENTUCKY COFFEE TREE	2
1246	W	ROOSEVELT		2	3.0"	GLEDITSIA TRIACANTHOS INERMIS 'SHADEMASTER'	SHADEMASTER HONEYLOCUST	2
1420	W	ROOSEVELT	1		3.0"	GYMNOCLADUS DIOICUS	KENTUCKY COFFEE TREE	1
1529	W	ROOSEVELT	1		3.0"	GYMNOCLADUS DIOICUS	KENTUCKY COFFEE TREE	1
1048	W	TAYLOR	1		3.0"	TAXODIUM DISTICHUM 'SHAWNEE BRAVE'	SHAWNEE BRAVE BALD CYPRESS	1
1301	W	TAYLOR	1		3.0"	TAXODIUM DISTICHUM 'SHAWNEE BRAVE'	SHAWNEE BRAVE BALD CYPRESS	1
1508	W	TAYLOR	1		3.0"	GYMNOCLADUS DIOICUS	KENTUCKY COFFEE TREE	1
1559	W	TAYLOR	1		3.0"	GYMNOCLADUS DIOICUS	KENTUCKY COFFEE TREE	1
1035	W	VAN BUREN	1		3.0"	GYMNOCLADUS DIOICUS	KENTUCKY COFFEE TREE	1
			56	20				76

## UIC - 2015 TREE PLANTING LOCATIONS

BUILDING NUMBER	ADDRESS	SIZE	SCIENTIFIC NAME	COMMON NAME	QUANTITY	STAKE ID
Lot 9	501 S. Morgan	3" CALIPER	ACER FREEMANII 'AUTUMN BLAZE'	AUTUMN BLAZE FREEMAN MAPLE	3	A1-13
601	601 S. Morgan	3" CALIPER	ACER FREEMANII 'AUTUMN BLAZE'	AUTUMN BLAZE FREEMAN MAPLE	3	A4-A6
621	728 W. Roosevelt	3" CALIPER	ACER FREEMANII 'AUTUMN BLAZE'	AUTUMN BLAZE FREEMAN MAPLE	1	A7
627	701 S. Morgan	3" CALIPER	ACER FREEMANII 'AUTUMN BLAZE'	AUTUMN BLAZE FREEMAN MAPLE	2	A8-A9
604D	804 S. Moragn	3" CALIPER	ACER FREEMANII 'AUTUMN BLAZE'	AUTUMN BLAZE FREEMAN MAPLE	2	A10-A11
605	750 S. Halsted	3" CALIPER	TAXODIUM DISTICHUM	BALD CYPRESS	3	B1-B3
Lot 5	1135 S. Morgan	2.5" CALIPER	ULMUS AMERICANA PRINCETON	PRINCETON AMERICAN ELM	3	C1-C3
618	1007 W. Harrison	7' HEIGHT	AMELANCHIER X GRANDIFLORA 'AUTUMN BRILLIANCE'	AUTUMN BRILLIANCE APPLE SERVICEBERRY	7	D1-D7
631	851 S. Morgan	7' HEIGHT	AMELANCHIER X GRANDIFLORA 'AUTUMN BRILLIANCE'	AUTUMN BRILLIANCE APPLE SERVICEBERRY	2	D8-D9
611	1140 S. Morgan	7' HEIGHT	AMELANCHIER X GRANDIFLORA 'AUTUMN BRILLIANCE'	AUTUMN BRILLIANCE APPLE SERVICEBERRY	3	D10-12
619	845 W. Taylor	6' HEIGHT	CERCIS CANADENSIS	EASTERN REDBUD	2	E1-E2
Lot 5	1135 S. Morgan	6' HEIGHT	CERCIS CANADENSIS	EASTERN REDBUD	1	E3
633	901 W. Roosevelt	2.5" CALIPER	SYRINGA RETICULATA 'SUMMER SNOW'	SUMMER SNOW JAPANESE TREE LILAC	4	F1-F4
Grove	851 S. Morgan	6' HEIGHT	OSTRYA VIRGINIANA	IRONWOOD	1	G1
Lot 11	1055 W. Congress Pkwy	3" CALIPER	TILIA CORDATA 'GLENLEVEN'	GLENLEVEN LITTLE LEAF LINDEN	6	H1-H6
604D	804 S. Morgan	3" CALIPER	ACER FREEMANII 'AUTUMN BLAZE'	AUTUMN BLAZE FREEMAN MAPLE	2	I1-I12
609	801 S. Morgan	7' HEIGHT	PSEUDOTSUGA MENZIESSI	DOUGLAS FIR	2	J1-J2
612	703 S. Morgan	2.5" CALIPER	ACER CAMPESTRE	HEDGE MAPLE	1	L1
621	728 W. Roosevelt	2.5" CALIPER	MALUS PRAIRIFIRE	PRAIRIFIRE CRABAPPLE	1	M1
Lot 4	761 W. Polk	2.5" CALIPER	MALUS PRAIRIFIRE	PRAIRIFIRE CRABAPPLE	3	M2-M4
Lot 1A	1109 W. Harrison	2.5" CALIPER	GYMNOCLADUS DIOICUS 'ESPRESSO-JFS'	ESPRESSO KENTUCKY COFFEETREE	1	N
617	828 S. Halsted	2.5" CALIPER	MALUS RED JEWEL	RED JEWEL CRABAPPLE	2	O1-O2
612	703 S. Morgan	2.5" CALIPER	MALUS RED JEWEL	RED JEWEL CRABAPPLE	12	O3-O14
619	845 W. Taylor	2.5" CALIPER	ULMUS 'MORTON'	ACCOLADE ELM	1	P1
Lot 4	761 W. Polk	2.5" CALIPER	ULMUS 'MORTON'	ACCOLADE ELM	1	P3
611	1140 S. Morgan	2.5" CALIPER	ULMUS 'MORTON'	ACCOLADE ELM	1	Q1
618 East	1007 W. Harrison	6' HEIGHT	CORNUS MAS 'GOLDEN GLORY'	GOLDEN GLORY CORNELIAN CHERRY DOGWOOD	7	R1-R7
623	1040 W. Harrison	3" CALIPER	ACER RUBRUM 'BOWHALL'	BOWHALL RED MAPLE	5	S1-S5
Lot 11		3" CALIPER	ACER RUBRUM 'BOWHALL'	BOWHALL RED MAPLE	1	S6

**TOTAL 83**

FILE NAME =	USER NAME = del-osarions	DESIGNED - _____	REVISED - _____	<b>STATE OF ILLINOIS DEPARTMENT OF TRANSPORTATION</b>	<b>UIC - TREE PLANTING LOCATIONS</b>	F.A.I. RTE.	SECTION	COUNTY	TOTAL SHEETS	SHEET NO.	
c:\pwwork\del-osarions\del-osarions\2355807	0187814-ah-t-Landscape.dgn	DRAWN - _____	REVISED - _____			90/94/290	2014-050LS	COOK	16	10	
Default	PLOT SCALE = 1/8" = 1' / in.	CHECKED - _____	REVISED - _____			<b>CONTRACT NO. 60Y66</b>					
	PLOT DATE = 9/14/2014	DATE - _____	REVISED - _____			ILLINOIS/FED. AID PROJECT					

## CDOT - SUPPLEMENTAL WATERING & TREE CARE LOCATIONS

ADDRESS			TYPE			SCIENTIFIC NAME	COMMON NAME	QTY	SUPPLEMENTAL WATERING	TREE CARE
			OPEN PIT	PARKWAY	MEDIAN					
646	W	ADAMS	1			ROBINIA PSEUDOACACIA 'CHICAGO BLUES'	CHICAGO BLUES BLACK LOCUST	1	1	1
503	S	ASHLAND	1			ULMUS X PATRIOT	PATRIOT ELM	1	1	1
505	S	ASHLAND	1			GYMNOCLADUS DIOICUS 'ESPRESSO'	ESPRESSO KENTUCKY COFFEETREE	1	1	1
629	S	ASHLAND	1			CELTIS OCCIDENTALIS	HACKBERRY	1	1	1
705	S	ASHLAND	5			CELTIS OCCIDENTALIS	HACKBERRY	5	5	5
727	S	ASHLAND	1			ULMUS X PATRIOT	PATRIOT ELM	1	1	1
903	S	ASHLAND	1			GYMNOCLADUS DIOICUS 'ESPRESSO'	ESPRESSO KENTUCKY COFFEETREE	1	1	1
1124	S	ASHLAND	1			ROBINIA PSEUDOACACIA 'CHICAGO BLUES'	CHICAGO BLUES BLACK LOCUST	1	1	1
500	S	CLINTON	3			QUERCUS MACDANIELLI 'CLEMONS'	HERITAGE OAK	3	3	3
506	S	CLINTON	3			GYMNOCLADUS DIOICUS 'ESPRESSO'	ESPRESSO KENTUCKY COFFEETREE	3	3	3
810	S	CLINTON		1		ULMUS X PATRIOT	PATRIOT ELM	1	1	1
1349	W	CONGRESS		4		CATALPA SPECIOSA	CATALPA	4	4	4
1543	W	CONGRESS		1		QUERCUS MACDANIELLI 'CLEMONS'	HERITAGE OAK	1	1	1
1551	W	CONGRESS		2		GYMNOCLADUS DIOICUS 'ESPRESSO'	ESPRESSO KENTUCKY COFFEETREE	2	2	2
2	S	DES PLAINES	2			CELTIS OCCIDENTALIS	HACKBERRY	2	2	2
4	S	DES PLAINES	3			QUERCUS MACDANIELLI 'CLEMONS'	HERITAGE OAK	3	3	3
800	S	DES PLAINES		4		GYMNOCLADUS DIOICUS 'ESPRESSO'	ESPRESSO KENTUCKY COFFEETREE	4	4	4
1301	W	FILLMORE		1		QUERCUS IMBRICARIA	SHINGLE OAK	1	1	1
1449	W	FILLMORE		1		QUERCUS MACDANIELLI 'CLEMONS'	HERITAGE OAK	1	1	1
1202	W	FLOURNOY		1		QUERCUS MUEHLENBERGII	CHINKAPIN OAK	1	1	1
1212	W	FLOURNOY		1		ALNUS SPAETHII	SPAETHII ALDER	1	1	1
2	N	GREEN	1			QUERCUS MUEHLENBERGII	CHINKAPIN OAK	1	1	1
14	N	GREEN	2			QUERCUS MACDANIELLI 'CLEMONS'	HERITAGE OAK	2	2	2
16	N	GREEN	1			ALNUS SPAETHII	SPAETHII ALDER	1	1	1
130	S	GREEN	1			GYMNOCLADUS DIOICUS 'ESPRESSO'	ESPRESSO KENTUCKY COFFEETREE	1	1	1
1210	W	GRENSHAW		1		QUERCUS IMBRICARIA	SHINGLE OAK	1	1	1
1256	W	GRENSHAW		1		GYMNOCLADUS DIOICUS 'ESPRESSO'	ESPRESSO KENTUCKY COFFEETREE	1	1	1
1300	W	GRENSHAW		1		QUERCUS MACROCARPA	BUR OAK	1	1	1
1330	W	GRENSHAW		1		QUERCUS IMBRICARIA	SHINGLE OAK	1	1	1
1345	W	GRENSHAW		1		QUERCUS MUEHLENBERGII	CHINKAPIN OAK	1	1	1
752	S	HALSTED			1	ULMUS X PATRIOT	PATRIOT ELM	1	0	0
894	S	HALSTED			1	QUERCUS MUEHLENBERGII	CHINKAPIN OAK	1	0	0
912	S	HALSTED			1	QUERCUS MUEHLENBERGII	CHINKAPIN OAK	1	0	0
924	S	HALSTED			1	QUERCUS MUEHLENBERGII	CHINKAPIN OAK	1	0	0
1010-1022	S	HALSTED			2	PRUNUS VIRGINIANA 'CANADA RED'	CANADA RED CHOKECHERRY	2	0	0
660-668	S	HALSTED			4	PRUNUS VIRGINIANA 'CANADA RED'	CANADA RED CHOKECHERRY	4	0	0
900-906	S	HALSTED			2	QUERCUS MUEHLENBERGII	CHINKAPIN OAK	2	0	0
936-954	S	HALSTED			4	QUERCUS MUEHLENBERGII	CHINKAPIN OAK	4	0	0
1306	W	HARRISON	1			GYMNOCLADUS DIOICUS 'ESPRESSO'	ESPRESSO KENTUCKY COFFEETREE	1	1	1
1424	W	HARRISON		1		QUERCUS MACROCARPA	BUR OAK	1	1	1
1500	W	HARRISON		1		CATALPA SPECIOSA	CATALPA	1	1	1

## CDOT - SUPPLEMENTAL WATERING & TREE CARE LOCATIONS

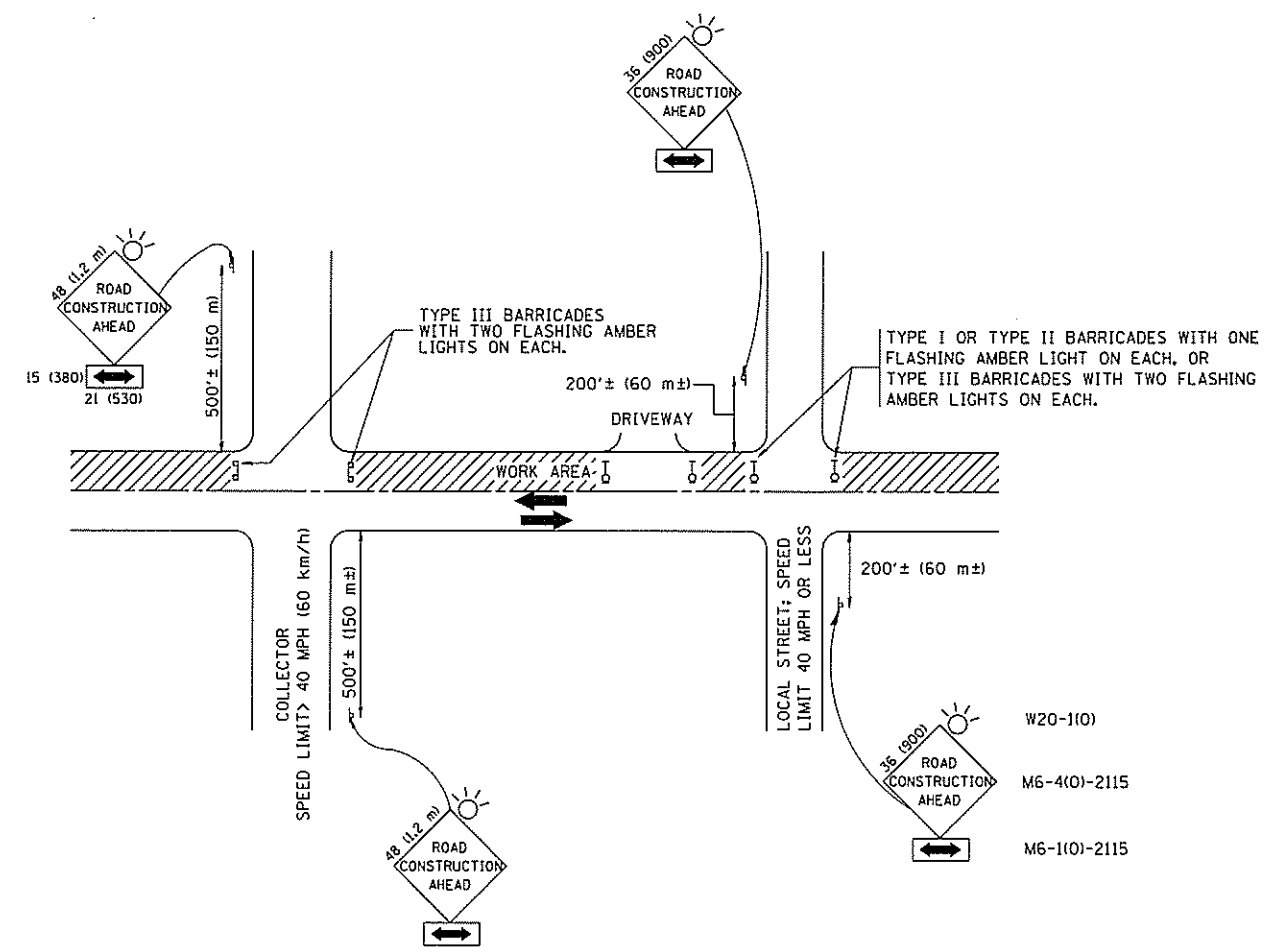
ADDRESS			TYPE			SCIENTIFIC NAME	COMMON NAME	QTY	SUPPLEMENTAL WATERING	TREE CARE
			OPEN PIT	PARKWAY	MEDIAN					
608	S	JEFFERSON	3			GYMNOCLADUS DIOICUS 'ESPRESSO'	ESPRESSO KENTUCKY COFFEETREE	3	3	3
610	S	JEFFERSON	3			ROBINIA PSEUDOACACIA 'CHICAGO BLUES'	CHICAGO BLUES BLACK LOCUST	3	3	3
612	S	JEFFERSON	3			GYMNOCLADUS DIOICUS 'ESPRESSO'	ESPRESSO KENTUCKY COFFEETREE	3	3	3
724	S	JEFFERSON	1			ROBINIA PSEUDOACACIA 'CHICAGO BLUES'	CHICAGO BLUES BLACK LOCUST	1	1	1
728	S	JEFFERSON	1			GLEDITSIA TRIACANTHOS VAR. INERMIS 'DRAVES'	STREET KEEPER HONEYLOCUST	1	1	1
740	S	JEFFERSON	2			GYMNOCLADUS DIOICUS 'ESPRESSO'	ESPRESSO KENTUCKY COFFEETREE	2	2	2
748	S	JEFFERSON	1			GYMNOCLADUS DIOICUS 'ESPRESSO'	ESPRESSO KENTUCKY COFFEETREE	1	1	1
750	S	JEFFERSON	2			ROBINIA PSEUDOACACIA 'CHICAGO BLUES'	CHICAGO BLUES BLACK LOCUST	2	2	2
1114	S	JEFFERSON	2			GYMNOCLADUS DIOICUS 'ESPRESSO'	ESPRESSO KENTUCKY COFFEETREE	2	2	2
1117	S	JEFFERSON	1			GYMNOCLADUS DIOICUS 'ESPRESSO'	ESPRESSO KENTUCKY COFFEETREE	1	1	1
1118	S	JEFFERSON	2			ROBINIA PSEUDOACACIA 'CHICAGO BLUES'	CHICAGO BLUES BLACK LOCUST	2	2	2
1003	S	LAF LIN	1			QUERCUS IMBRICARIA	SHINGLE OAK	1	1	1
1014	S	LAF LIN	1			QUERCUS IMBRICARIA	SHINGLE OAK	1	1	1
620	W	MADISON	1			GYMNOCLADUS DIOICUS 'ESPRESSO'	ESPRESSO KENTUCKY COFFEETREE	1	1	1
836	W	MADISON	1			GYMNOCLADUS DIOICUS 'ESPRESSO'	ESPRESSO KENTUCKY COFFEETREE	1	1	1
850	W	MADISON	1			GYMNOCLADUS DIOICUS 'ESPRESSO'	ESPRESSO KENTUCKY COFFEETREE	1	1	1
933	W	MADISON	4			SYRINGA RETICULATA 'IVORY SILK'	IVORY SILK JAPANESE TREE LILAC	4	4	4
626	W	MONROE	1			GYMNOCLADUS DIOICUS 'ESPRESSO'	ESPRESSO KENTUCKY COFFEETREE	1	1	1
712	W	MONROE	1			CELTIS OCCIDENTALIS	HACKBERRY	1	1	1
618	S	RACINE	1			CELTIS OCCIDENTALIS	HACKBERRY	1	1	1
1030	S	RACINE		1		QUERCUS MUEHLENBERGII	CHINKAPIN OAK	1	1	1
1034	S	RACINE		1		QUERCUS MACDANIELLI 'CLEMONS'	HERITAGE OAK	1	1	1
627	W	ROOSEVELT	2			GYMNOCLADUS DIOICUS 'ESPRESSO'	ESPRESSO KENTUCKY COFFEETREE	2	2	2
950	W	ROOSEVELT			1	GYMNOCLADUS DIOICUS 'ESPRESSO'	ESPRESSO KENTUCKY COFFEETREE	1	0	0
1001	W	ROOSEVELT		2		QUERCUS IMBRICARIA	SHINGLE OAK	2	2	2
1133	W	ROOSEVELT		3		GYMNOCLADUS DIOICUS 'ESPRESSO'	ESPRESSO KENTUCKY COFFEETREE	3	3	3
1312	W	ROOSEVELT		2		GYMNOCLADUS DIOICUS 'ESPRESSO'	ESPRESSO KENTUCKY COFFEETREE	2	2	2
1336	W	ROOSEVELT		1		CELTIS OCCIDENTALIS	HACKBERRY	1	1	1
1346	W	ROOSEVELT		1		QUERCUS MACROCARPA	BUR OAK	1	1	1
1354	W	ROOSEVELT			1	TILIA CORDATA 'GLENLIVEN'	GLENLIVEN LITTLELEAF LINDEN	1	0	0
1330	W	ROOSEVELT			1	TILIA CORDATA 'GLENLIVEN'	GLENLIVEN LITTLELEAF LINDEN	1	0	0
1248	W	ROOSEVELT			1	TILIA CORDATA 'GLENLIVEN'	GLENLIVEN LITTLELEAF LINDEN	1	0	0
410	S	SANGAMON		1		SYRINGA RETICULATA 'IVORY SILK'	IVORY SILK JAPANESE TREE LILAC	1	1	1
1329	W	TAYLOR	1			ROBINIA PSEUDOACACIA 'CHICAGO BLUES'	CHICAGO BLUES BLACK LOCUST	1	1	1
843	W	VAN BUREN	1			ROBINIA PSEUDOACACIA 'CHICAGO BLUES'	CHICAGO BLUES BLACK LOCUST	1	1	1
858	W	VAN BUREN	1			ROBINIA PSEUDOACACIA 'CHICAGO BLUES'	CHICAGO BLUES BLACK LOCUST	1	1	1
948	W	VAN BUREN		2		QUERCUS MACROCARPA	BUR OAK	2	2	2
1061	W	VAN BUREN	1			SYRINGA RETICULATA 'IVORY SILK'	IVORY SILK JAPANESE TREE LILAC	1	1	1
1300	W	VAN BUREN	4			QUERCUS MACDANIELLI 'CLEMONS'	HERITAGE OAK	4	4	4
1302	W	VAN BUREN	4			CATALPA SPECIOSA	CATALPA	4	4	4
1354	W	VAN BUREN		1		QUERCUS MUEHLENBERGII	CHINKAPIN OAK	1	1	1
1420	W	VAN BUREN	1			GYMNOCLADUS DIOICUS 'ESPRESSO'	ESPRESSO KENTUCKY COFFEETREE	1	1	1
1454	W	VAN BUREN	1			GYMNOCLADUS DIOICUS 'ESPRESSO'	ESPRESSO KENTUCKY COFFEETREE	1	1	1
640	W	WASHINGTON		1		GLEDITSIA TRIACANTHOS VAR. INERMIS 'DRAVES'	STREET KEEPER HONEYLOCUST	1	1	1
<b>TOTALS</b>								<b>117</b>	<b>117</b>	

## UIC - SUPPLEMENTAL WATERING & TREE CARE LOCATIONS

ADDRESS	BUILDING NUMBER	TYPE	SCIENTIFIC NAME	COMMON NAME	QUANTITY	SUPPLEMENTAL WATERING	TREE CARE
804 S. HALSTED	604D		ACER CAMPESTRE	HEDGE MAPLE	2	0	2
701 S. MORGAN	627		ACER X FREEMANNII 'AUTUMN BLAZE'	AUTUMN BLAZE MAPLE	3	0	3
760 W. TAYLOR	LOT 4 - RAMP		ALNUS SPEAETHII	ALDER	1	1	1
1135 S. MORGAN	LOT 5		ACER X FREEMANNII 'MARMO'	MARMO MAPLE	13	13	13
601 S. MORGAN	601 - SOUTH OF BLDG (IN DETENTION ZONE)		BETULA NIGRA 'HERITAGE'	HERITAGE RIVER BIRCH	9	9	9
845 W. HARRISON	628		CATALPA SPECIOSA	CATALPA	1	1	1
1617 W. TAYLOR	LOT K (EAST SIDE)		CELTIS OCCIDENTALIS	HACKBERRY	5	5	5
1135 S. MORGAN	LOT 5 (TURNAROUND)		GINKGO BILOBA 'AUTUMN GOLD'	AUTUMN GOLD GINKGO	2	0	2
1135 S. MORGAN	LOT 5 (NORTH ENTRY)		GINKGO BILOBA 'AUTUMN GOLD'	AUTUMN GOLD GINKGO	1	0	1
1100 S. ASHLAND	976 (SOUTH CORNER)		GINKGO BILOBA 'AUTUMN GOLD'	AUTUMN GOLD GINKGO	1	0	1
1139 W. HARRISON	LOT 1B - SW CORNER		GYMNOCLADUS DIOICUS 'ESPRESSO'	ESPRESSO KENTUCKY COFFEETREE	1	1	1
900 S. ASHLAND	MOLECULAR BIOLOGY	TREE PIT	GYMNOCLADUS DIOICUS 'ESPRESSO'	ESPRESSO KENTUCKY COFFEETREE	2	2	2
1100 S. ASHLAND	976	TRE PIT	GYMNOCLADUS DIOICUS 'ESPRESSO'	ESPRESSO KENTUCKY COFFEETREE	1	1	1
900 W. TAYLOR	LOT 10	PARKWAY	GYMNOCLADUS DIOICUS 'ESPRESSO'	ESPRESSO KENTUCKY COFFEETREE	6	6	6
1140 S. MORGAN	611		GYMNOCLADUS DIOICUS 'ESPRESSO'	ESPRESSO KENTUCKY COFFEETREE	1	1	1
1020 S. UNION	635 (CORNER OF HALSTED/TAYLOR)	PARKWAY	GYMNOCLADUS DIOICUS 'ESPRESSO'	ESPRESSO KENTUCKY COFFEETREE	1	1	1
601 S. MORGAN	UNIVERSITY HALL - WEST SIDE (2 GROUPS)		POPULUS TREMULOIDES	QUAKING ASPEN	9	0	9
1135 S. MORGAN	LOT 5 - SOUTHEAST		QUERCUS BICOLOR	SWAMP WHITE OAK	9	9	9
703 S. MORGAN	612		QUERCUS IMBRICARIA	SHINGLE OAK	1	0	1
1135 S. MORGAN	LOT 5 (SW CORNER)		QUERCUS MACROCARPA	BUR OAK	2	0	2
BWTWN 950 S. HALSTED & 750 S. HALSTED	BETWEEN 607 AND 605		QUERCUS MUHLENBERGII	CHINKAPIN OAK	4	4	4
701 S. MORGAN	627		QUERCUS RUBRA	RED OAK	2	2	2

## UIC - SUPPLEMENTAL WATERING & TREE CARE LOCATIONS

ADDRESS	BUILDING NUMBER	TYPE	SCIENTIFIC NAME	COMMON NAME	QUANTITY	SUPPLEMENTAL WATERING	TREE CARE
1135 S. HALSTED	LOT 6	PARKWAY	ROBINIA PSEUDOACACIA 'CHICAGO BLUES'	CHICAGO BLUES BLACK LOCUST	3	3	3
901 W. ROOSEVELT	633		TAXODIUM DISTICHUM	BALD CYPRESS	5	0	5
1135 S. RACINE	LOT 6		TILIA AMERICANA 'REDMOND'	REDMOND LINDEN	5	5	5
525 S. RACINE	638		TILIA AMERICANA 'REDMOND'	REDMOND LINDEN	1	1	1
1135 S. MORGAN	LOT 5		TILIA CORDATA 'GLENLEVEN'	GLENLEVEN LITTLELEAF LINDEN	14	14	14
1135 S. MORGAN	LOT 5 - SOUTH END OF ALLEY		ULMUS AMERICANA P'RINCETON'	PRINCETON AMERICAN ELM	9	9	9
1020 S. UNION	635	PARKWAY	ULMUS JAPONICA X WILSONIANA 'MORTON'	ACCOLADE ELM	7	7	7
845 W TAYLOR	619	PARKWAY	ULMUS JAPONICA X WILSONIANA 'MORTON'	ACCOLADE ELM	1	1	1
1135 S MORGAN	LOT 5	PARKWAY	ULMUS JAPONICA X WILSONIANA 'MORTON'	ACCOLADE ELM	1	1	1
1135 S. MORGAN	LOT 5		ULMUS JAPONICA X WILSONIANA 'MORTON'	ACCOLADE ELM	12	12	12
842 W. TAYLOR	648		ULMUS JAPONICA X WILSONIANA 'MORTON'	ACCOLADE ELM	1	1	1
901 W. ROOSEVELT	633		ULMUS X PATRIOT	PATRIOT ELM	1	0	1
1215 W. CONGRESS PARKWAY	LOT 18A		ULMUS X PATRIOT	PATRIOT ELM	1	0	1
1120 S. MORGAN	654	PARKWAY	ULMUS X PATRIOT	PATRIOT ELM	1	0	1
1200 W. HARRISON	655		AMELANCHIER X GRANDIFLORA	SERVICEBERRY	2	0	2
1140 S. MORGAN	611		AMELANCHIER X GRANDIFLORA	SERVICEBERRY	3	0	3
1100 S. MORGAN	610		AMELANCHIER X GRANDIFLORA	SERVICEBERRY	1	0	1
601 S. MORGAN	UNIVERSITY HALL - WEST SIDE (2 - ON NORTH PANEL; 3 - ON SOUTH PANEL)		CERCIS CANADENSIS	REDBUD	5	0	5
1035 S MORGAN	LOT 5		MALUS 'PRAIRIFIRE'	PRAIRIFIRE CRABAPPLE	3	0	3
950 S. HALSTED	607 - EAST SIDE, NORTH END		MALUS 'RED JEWEL'	RED JEWEL CRABAPPLE	3	3	3
830 S. HALSTED	616		PRUNUS VIRGINIANA 'CANADA RED'	CANADA RED CHOKECHERRY	2	0	2
950 S. HALSTED	607 (EAST SIDE ; SOUTH END)		SYRINGA RETICULATA 'IVORY SILK'	IVORY SILK JAPANESE TREE LILAC	2	0	2
<b>TOTALS</b>					<b>160</b>	<b>113</b>	<b>160</b>



TRAFFIC CONTROL AND PROTECTION FOR SIDE ROADS, INTERSECTIONS, AND DRIVEWAYS

NOTES:

- A. FOR NO LANE RESTRICTION ON THE SIDE ROAD OR DRIVEWAYS
  1. SIDE ROAD WITH A SPEED LIMIT OF 40 MPH (60 km/h) OR LESS AS SHOWN ON THE DRAWING AND AS DIRECTED BY THE ENGINEER:
    - a) ONE ROAD CONSTRUCTION AHEAD SIGN 36 x 36 (900x900) WITH A FLASHER AND FLAG MOUNTED ON IT APPROXIMATELY 200' (60 m) IN ADVANCE OF THE MAIN ROUTE.
    - b) THE CLOSED PORTION OF THE MAIN ROUTE SHALL BE PROTECTED BY BLOCKING WITH TYPE I, TYPE II OR TYPE III BARRICADES, 1/3 OF THE CROSS SECTION OF THE CLOSED PORTION.
  2. SIDE ROAD WITH A SPEED LIMIT GREATER THAN 40 MPH (60 km/h) AS SHOWN ON THE DRAWING AND AS DIRECTED BY THE ENGINEER:
    - a) ONE ROAD CONSTRUCTION AHEAD SIGN 48 x 48 (1,2 m x 1,2 m) WITH A FLASHER MOUNTED ON IT APPROXIMATELY 500' (150 m) IN ADVANCE OF THE MAIN ROUTE.
    - b) THE CLOSED PORTION OF THE MAIN ROUTE SHALL BE PROTECTED BY BLOCKING WITH TYPE II BARRICADES, 1/2 OF THE CROSS SECTION OF THE CLOSED PORTION.
- 3. WHEN THE SIDE ROAD LIES BETWEEN THE BEGINNING OF THE MAINLINE SIGNING AND THE WORK ZONE, A SINGLE HEADED ARROW (M6-1) SHALL BE USED IN LIEU OF THE DOUBLE HEADED ARROW (M6-4).
- B. FOR A LANE CLOSURE ON A SIDE ROAD OR DRIVEWAY:
 

USE APPLICABLE PORTIONS OF THE TYPICAL APPLICATION OF TRAFFIC CONTROL DEVICES (STD. 701501, STD. 701606 OR THE APPROPRIATE STANDARD). THE SPACING OF SIGNS AND BARRICADES SHALL BE ADJUSTED FOR FIELD CONDITIONS AS DIRECTED BY THE ENGINEER. THE DIRECTIONAL ARROW SHALL BE COVERED OR REMOVED WHEN NO LONGER CONSISTENT WITH THE SIDE ROAD LANE CLOSURE.
- C. ADVANCE WARNING SIGNS ARE TO BE OMITTED ON DRIVEWAY UNLESS OTHERWISE NOTED.
- D. THE TRAFFIC CONTROL AND PROTECTION FOR SIDE ROADS, INTERSECTIONS, AND DRIVEWAYS SHALL BE INCIDENTAL TO THE COST OF SPECIFIED TRAFFIC CONTROL STANDARDS OR ITEMS.

All dimensions are in millimeters (inches) unless otherwise shown.

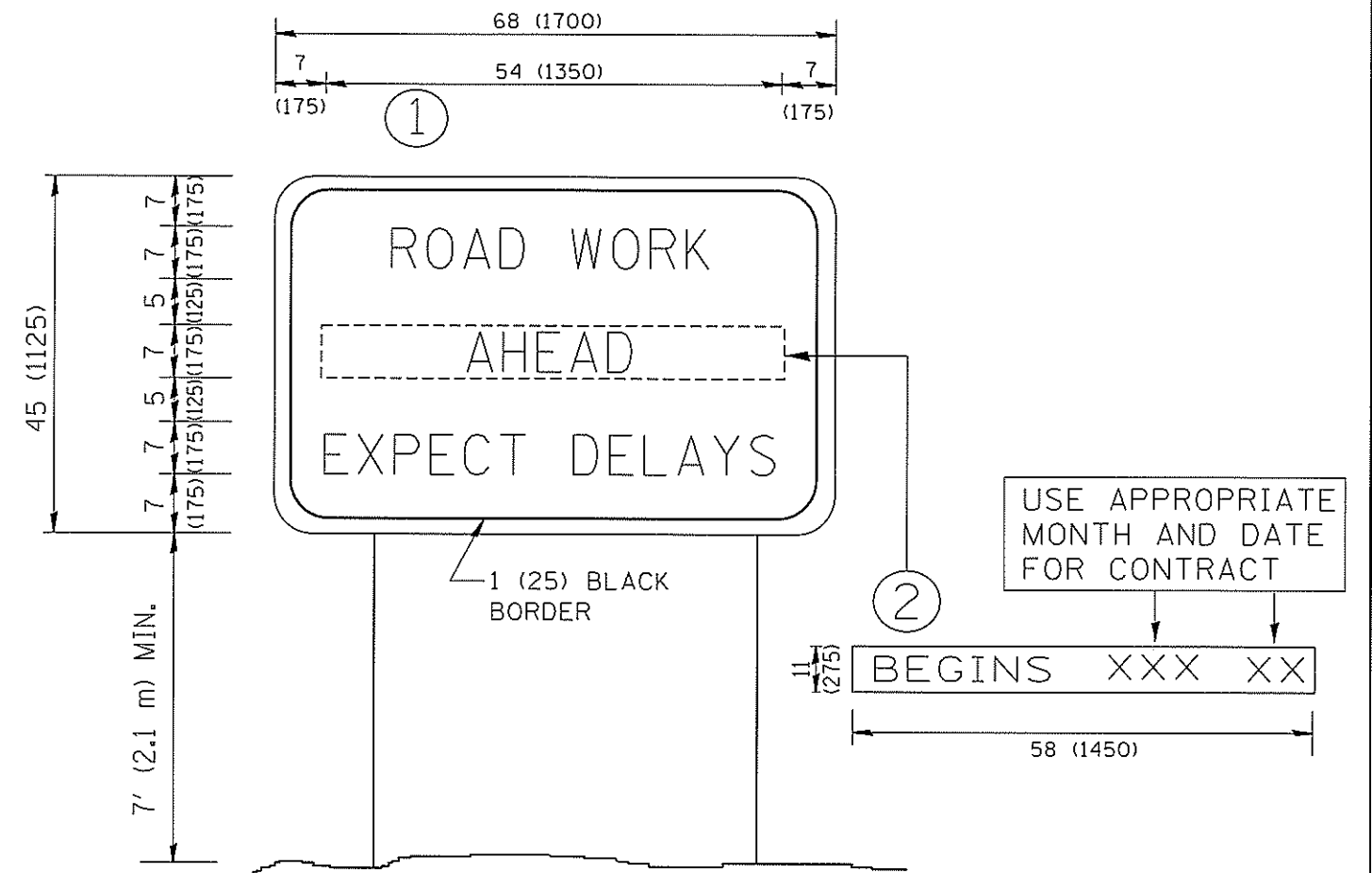
FILE NAME = W:\dstatd\22x34\to10.dgn	USER NAME = goglionob	DESIGNED - LHA	REVISED - J. OBERLE 10-18-95
		DRAWN -	REVISED - A. HOUSEH 03-06-96
	PLOT SCALE = 50,000' / IN.	CHECKED -	REVISED - A. HOUSEH 10-15-96
	PLOT DATE = 1/4/2008	DATE - 06-89	REVISED - T. RAMMACH 01-06-00

STATE OF ILLINOIS  
DEPARTMENT OF TRANSPORTATION

TRAFFIC CONTROL AND PROTECTION FOR SIDE ROADS, INTERSECTIONS, AND DRIVEWAYS			
SCALE: NONE	SHEET NO. 1 OF 1 SHEETS	STA.	TO STA.

F.A.I. RTE. 80/94	SECTION 2014-050LS	COUNTY COOK	TOTAL SHEETS 16	SHEET NO. 15
TC-10			CONTRACT NO. 60466	
FED. ROAD DIST. NO. 1 [ILLINOIS] FED. AID PROJECT				





**NOTES:**

1. USE BLACK LETTERING ON ORANGE BACKGROUND.
2. ERECT SIGNS IN ADVANCE OF THE LOCATION FOR THE "ROAD CONSTRUCTION AHEAD" SIGN AT LOCATIONS AS DIRECTED BY THE ENGINEER.
3. ERECT SIGN ① WITH INSTALLED PANEL ② ONE WEEK PRIOR TO THE START OF CONSTRUCTION.
4. REMOVE PANEL ② SOON AFTER THE START OF CONSTRUCTION.
5. SEE SPECIAL PROVISION FOR "TEMPORARY INFORMATION SIGNING" FOR ADDITIONAL INFORMATION.
6. ONE SIGN ASSEMBLY EQUALS 25.70 SQ. FT. (2.3 SQ. M.)
7. SHALL BE PAID FOR AS TEMPORARY INFORMATION SIGNING.

ALL DIMENSIONS ARE IN INCHES (MILLIMETERS) UNLESS OTHERWISE SHOWN.

FILE NAME * W:\d\stata\22x34\cc22.dgn	USER NAME = gagliano	DESIGNED -	REVISED - R. MIRS 09-15-97	<b>STATE OF ILLINOIS DEPARTMENT OF TRANSPORTATION</b>	<b>ARTERIAL ROAD INFORMATION SIGN</b>			F.A.I. RTE. 92/44	SECTION 2014-050LS	COUNTY COOK	TOTAL SHEETS 16	SHEET NO. 16
	PLOT SCALE = 50,000 ' / IN.	DRAWN -	REVISED - R. MIRS 12-11-97		SCALE: NONE	SHEET NO. 1 OF 1 SHEETS	STA.	TO STA.	TC-22		CONTRACT NO. 60Y66	
	PLOT DATE = 1/4/2008	CHECKED -	REVISED - T. RAMMACHER 02-02-99		FED. ROAD DIST. NO. 1   ILLINOIS FED. AID PROJECT							
		DATE -	REVISED - C. JUCIUS 01-31-07									