

STATE OF ILLINOIS
DEPARTMENT OF TRANSPORTATION
DIVISION OF HIGHWAYS

**PROPOSED
HIGHWAY PLANS**

F.A. RTE.	SECTION	COUNTY	TOTAL SHEETS	SHEET NO.
*	2014-056BP	DUPAGE	11	1
		ILLINOIS	CONTRACT NO. 60Y76	

* 1) FAI 290
2) FAP 344

FOR INDEX OF SHEETS, SEE SHEET NO. 2

THIS IMPROVEMENT IS LOCATED IN THE CITY OF ELMHURST & THE VILLAGE OF VILLA PARK.

US 20
2009 ADT=16400
SPEED LIMIT=40 MPH

I-290
2013 ADT=120400
SPEED LIMIT=55 MPH

IL 83
2013 ADT=65500
SPEED LIMIT = 45 MPH

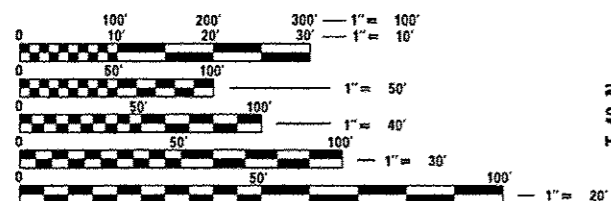
**LOC. 1: FAI 290: WB RAMP US 20
OVER I-290**
**LOC. 2: FAP 344: IL 83 (KINGERY HWY)
OVER SALT CREEK
SECTION 2014-056BP
DUPAGE COUNTY
BRIDGE PAINTING**

C-91-020-15



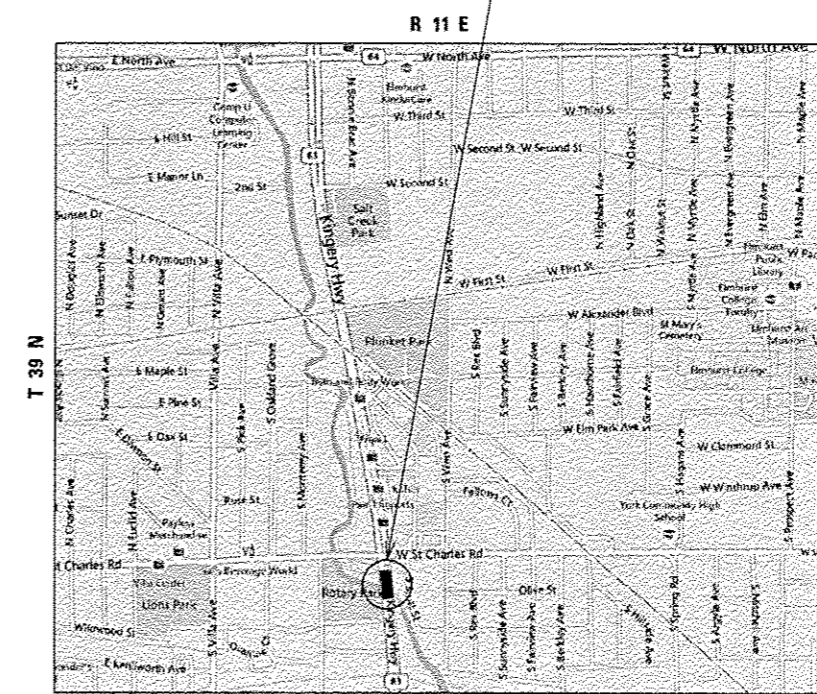
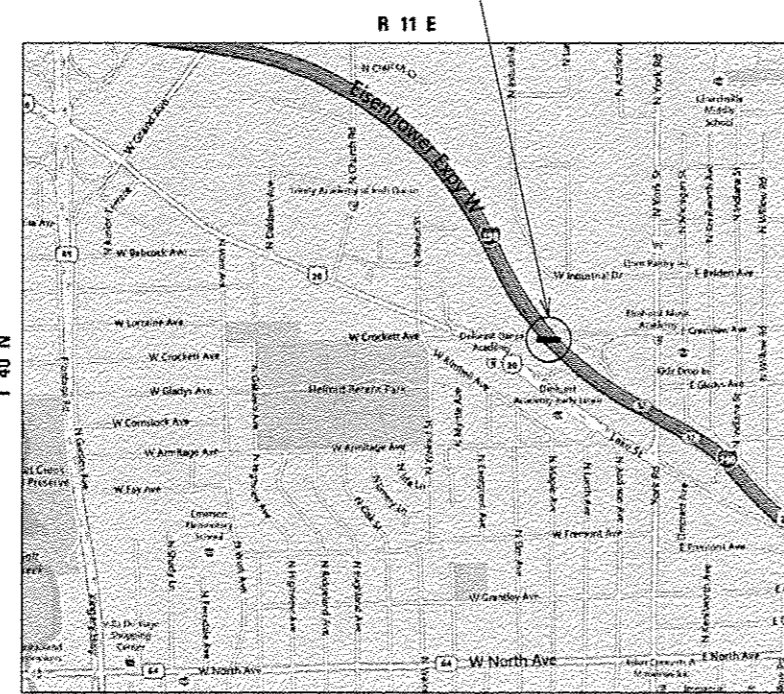
LOCATION 1: SN 022-0090
US 20 WB RAMP OVER I-290

LOCATION 2: SN 022-0045
IL 83 OVER SALT CREEK



FULL SIZE PLANS HAVE BEEN PREPARED USING STANDARD ENGINEERING SCALES. REDUCED SIZED PLANS WILL NOT CONFORM TO STANDARD SCALES. IN MAKING MEASUREMENTS ON REDUCED PLANS, THE ABOVE SCALES MAY BE USED.

J.U.L.I.E.
JOINT UTILITY LOCATION INFORMATION FOR EXCAVATION
1-800-892-0123
OR 811



PROJECT ENGINEER: ALAIN MIDY (847) 221-3056
PROJECT MANAGER: ISSAM RAYYAN (847) 705-4178

CONTRACT NO. 60Y76

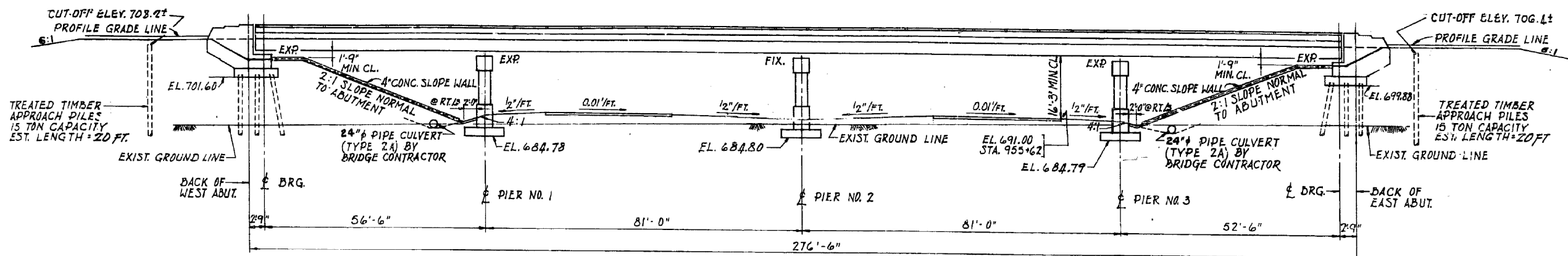
STATE OF ILLINOIS
DEPARTMENT OF TRANSPORTATION
DIVISION OF HIGHWAYS

SUBMITTED August 1, 2014
John D. Baranzelli
DEPUTY DIRECTOR OF HIGHWAYS, REGION ENGINEER

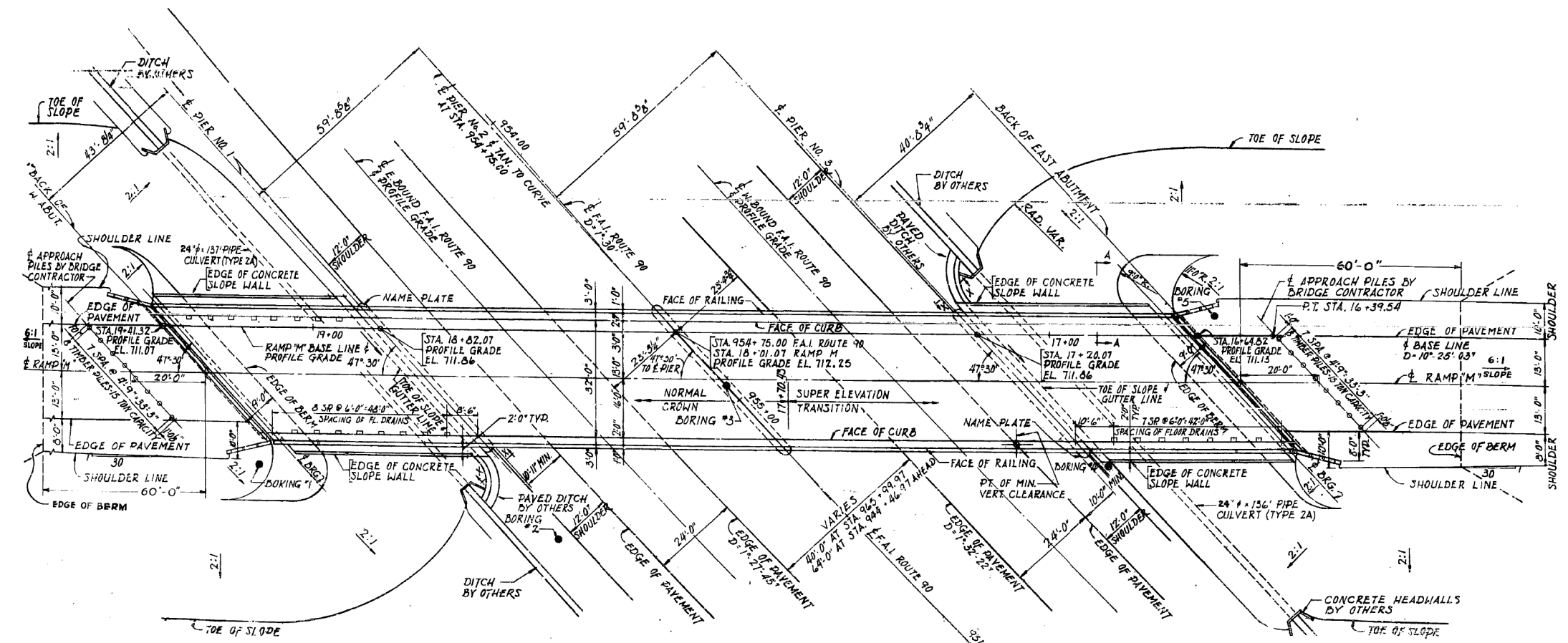
Oct 17, 2014
John D. Baranzelli P.E., J.E.
acting ENGINEER OF DESIGN AND ENVIRONMENT

Oct 17, 2014
Omer Osman P.E.
DIRECTOR OF HIGHWAYS, CHIEF ENGINEER

PRINTED BY THE AUTHORITY
OF THE STATE OF ILLINOIS



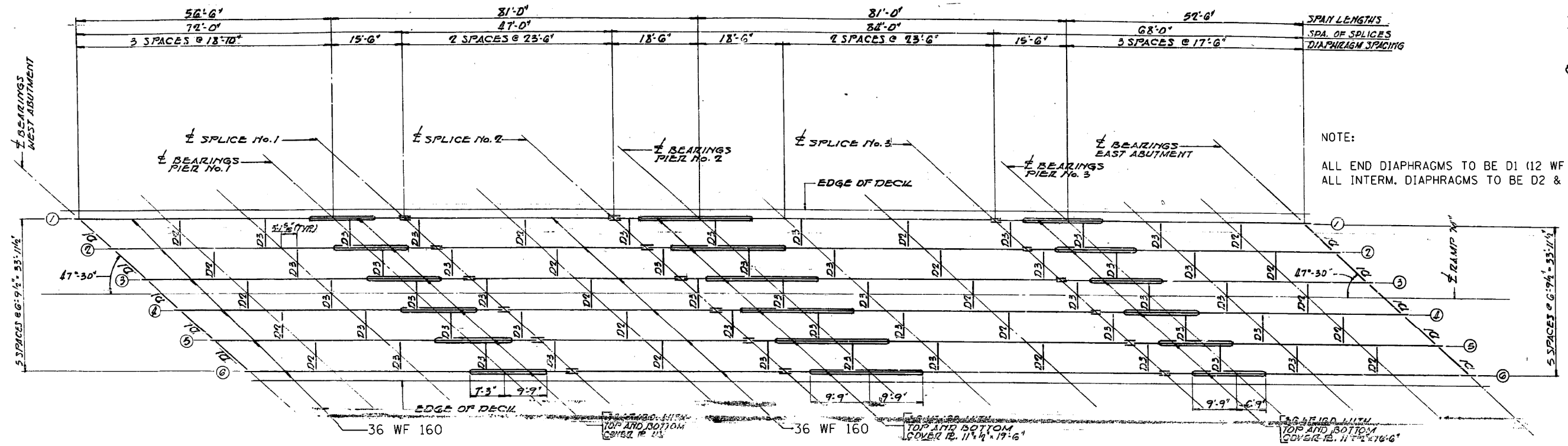
ELEVATION
SN 022-0090



PLAN
SN 022-0090

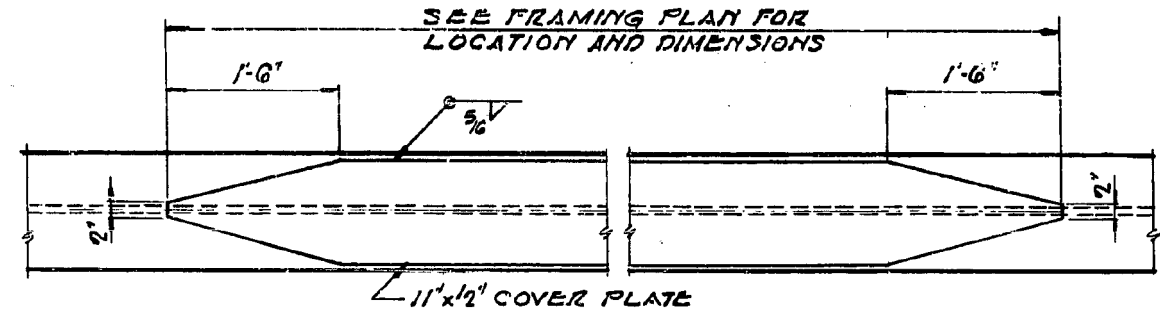
FOR INFORMATION ONLY

FILE NAME = c:\pwwork\p\d0409160\102115-sh1-plan.dgn	USER NAME = rozeqm	DESIGNED -	REVISED -	STATE OF ILLINOIS DEPARTMENT OF TRANSPORTATION	SN 022-0090 PLAN & ELEVATION		F.A. RTE.	SECTION	COUNTY	TOTAL SHEETS	SHEET NO.
	PLOT SCALE = 100.0000' / 1" =	CHECKED -	REVISED -				• 1) FAI 290	2) FAP 344	DUPAGE	11	4
Default	PLOT DATE = 8/11/2014	DATE -	REVISED -	SCALE: NTS	SHEET 1	OF 3 SHEETS	STA.	TO STA.	CONTRACT NO. 60Y76 ILLINOIS FED. AID PROJECT		

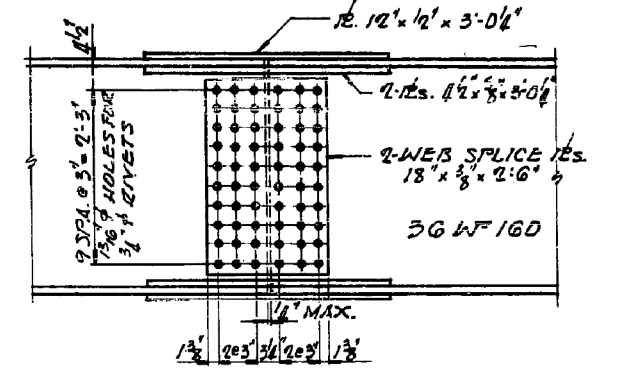
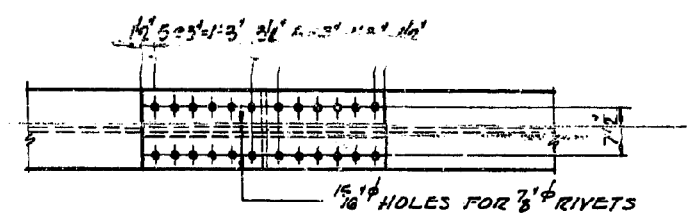


NOTE:
 ALL END DIAPHRAGMS TO BE D1 (12 WF 40).
 ALL INTERM. DIAPHRAGMS TO BE D2 & D3 (16 WF 36).

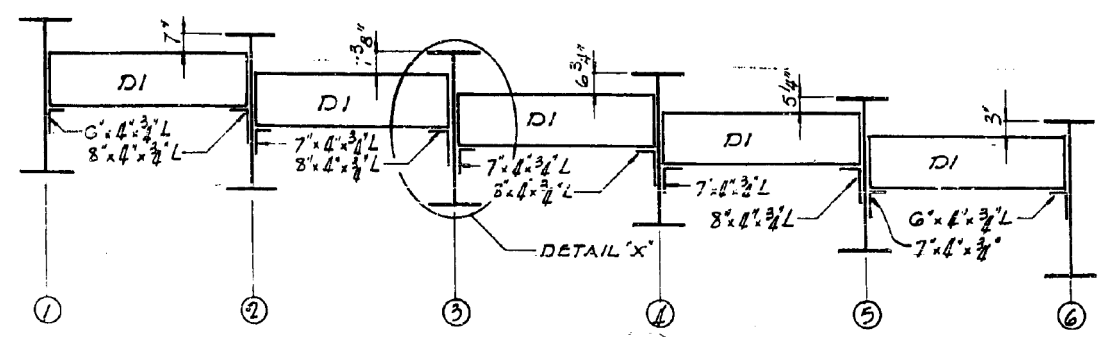
FRAMING PLAN
 SN 022-0090



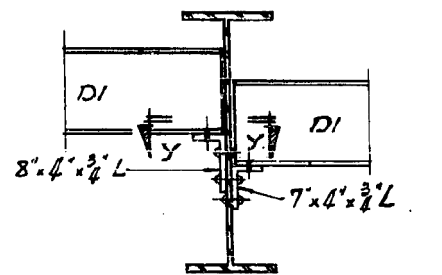
COVER PLATE DETAIL
 SN 022-0090



TYPICAL SPLICE DETAIL
 SN 022-0090

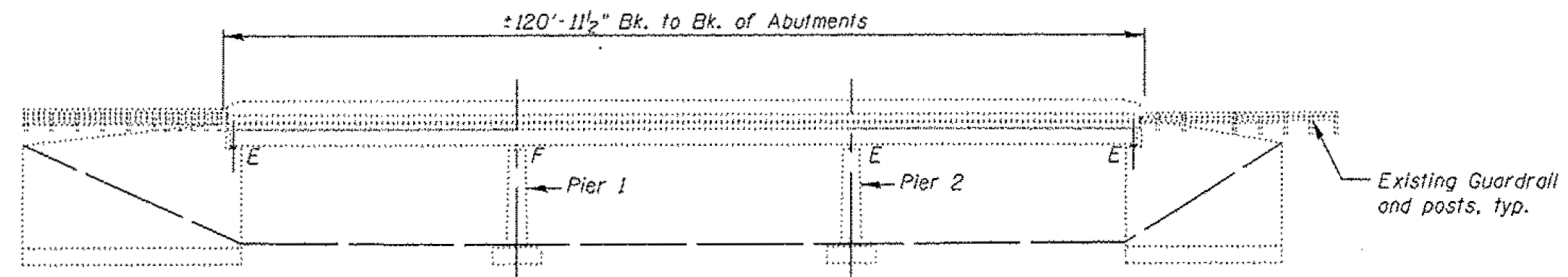


ELEVATION OF DIAPHRAGMS - EAST ABUTMENT
 SN 022-0090

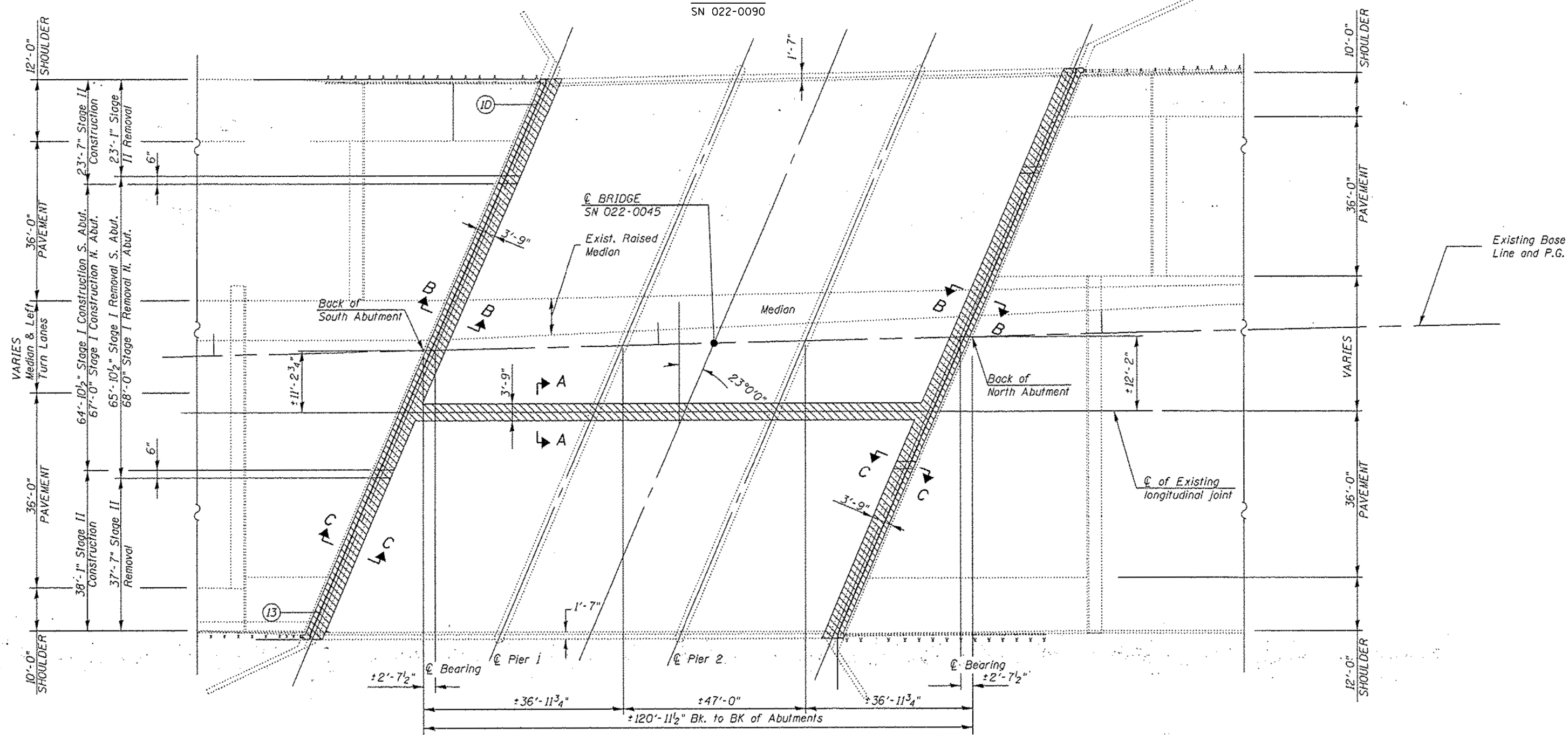


DETAIL "X" - TYPICAL CONNECTION
 SN 022-0090

FILE NAME =	USER NAME = rozeqem	DESIGNED -	REVISED -	STATE OF ILLINOIS DEPARTMENT OF TRANSPORTATION	SN 022-0090 FRAMING PLAN & STRUCTURAL STEEL DETAILS	F.A. RTE.	SECTION	COUNTY	TOTAL SHEETS	SHEET NO.
ci:\pwork\pwork\rozeqem\0409160\DI0215-sh1-plan.dgn	DRAWN -	REVISED -	•			2014-056BP	DUPAGE	11	5	
Default	PLOT SCALE = 100.0000' / 1in.	CHECKED -	REVISED -			•1) FAI 290	2) FAP 344	CONTRACT NO. 60Y76		
	PLOT DATE = 8/11/2014	DATE -	REVISED -			ILLINOIS FED. AID PROJECT				

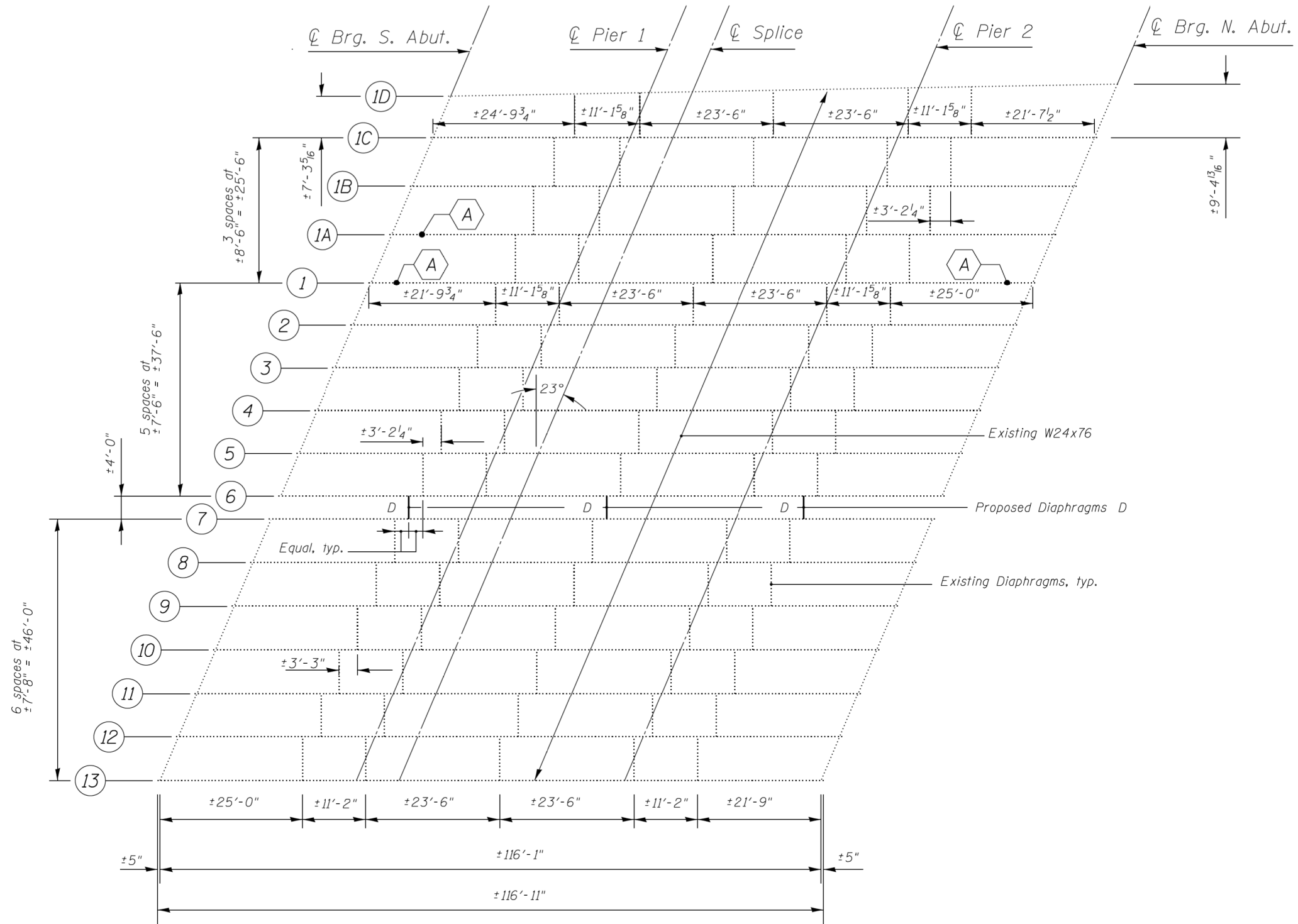


ELEVATION
SN 022-0090



FOR INFORMATION ONLY

FILE NAME : c:\pwwork\pwwork\pwwork\0409160\102115-sh1-plan.dgn	USER NAME : rozeqem	DESIGNED -	REVISED -	STATE OF ILLINOIS DEPARTMENT OF TRANSPORTATION	SN 022-0045 PLAN & ELEVATION	F.A. RTE.	SECTION	COUNTY	TOTAL SHEETS	SHEET NO.
	PLOT SCALE : 100.0000' / 1" / 10'	CHECKED -	REVISED -			• 1) FAI 290	2) FAP 344	DUPAGE	11	7
Default	PLOT DATE : 6/11/2014	DATE -	REVISED -	SCALE: NTS	SHEET 1 OF 3 SHEETS	STA.	TO STA.	CONTRACT NO. 60Y76 ILLINOIS FED. AID PROJECT		



FRAMING PLAN

SN 022-0045

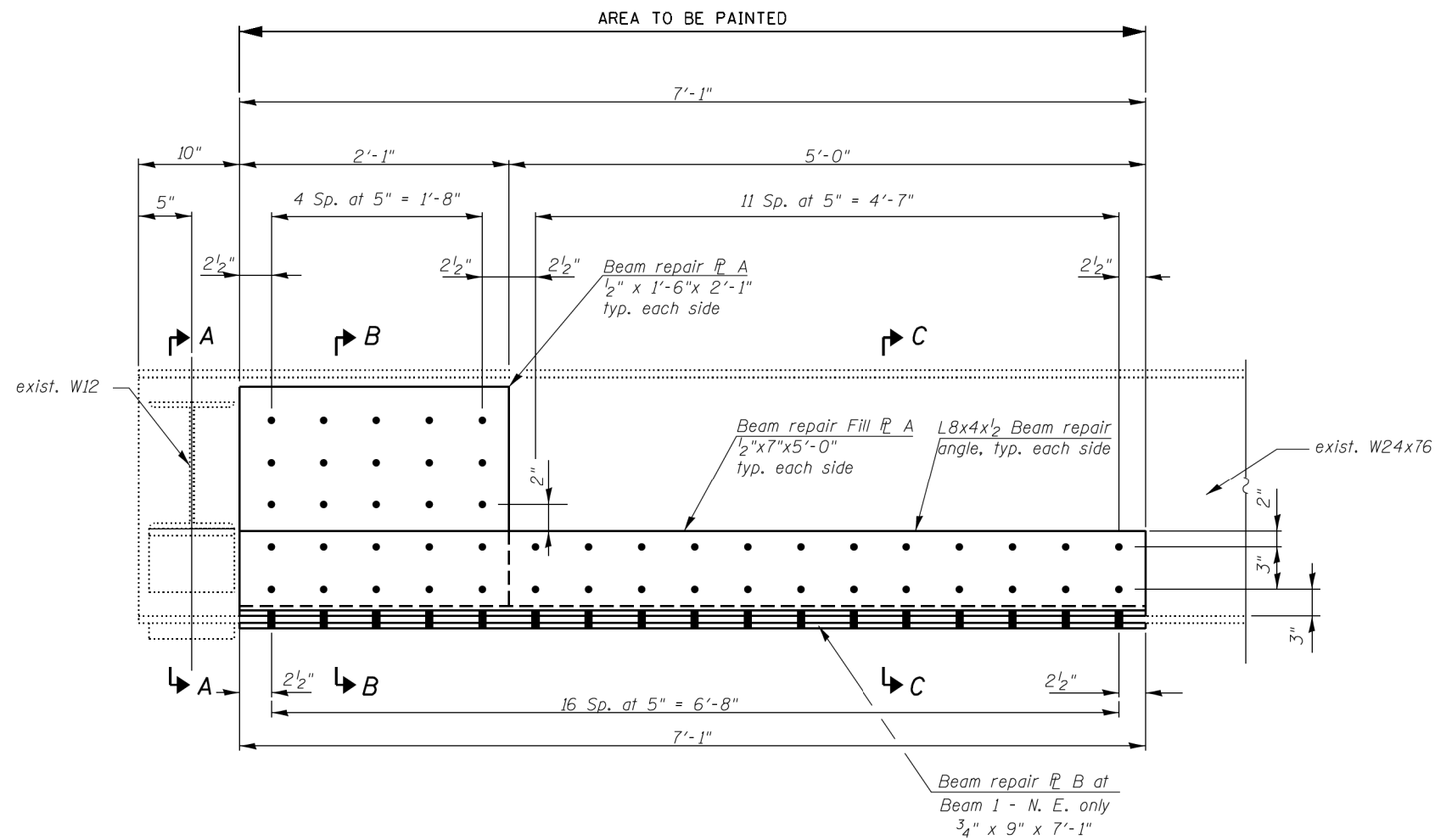
FILE NAME =	USER NAME = rozeqem	DESIGNED -	REVISED -
ci:\pwork\pwork\rozeqem\d0409160\0102115-sh1-plan.dgn		DRAWN -	REVISED -
Default	PLOT SCALE = 100.0000' / 1in.	CHECKED -	REVISED -
	PLOT DATE = 8/11/2014	DATE -	REVISED -

**STATE OF ILLINOIS
DEPARTMENT OF TRANSPORTATION**

**SN 022-0045
FRAMING PLAN**

SCALE: NTS SHEET 2 OF 3 SHEETS STA. TO STA.

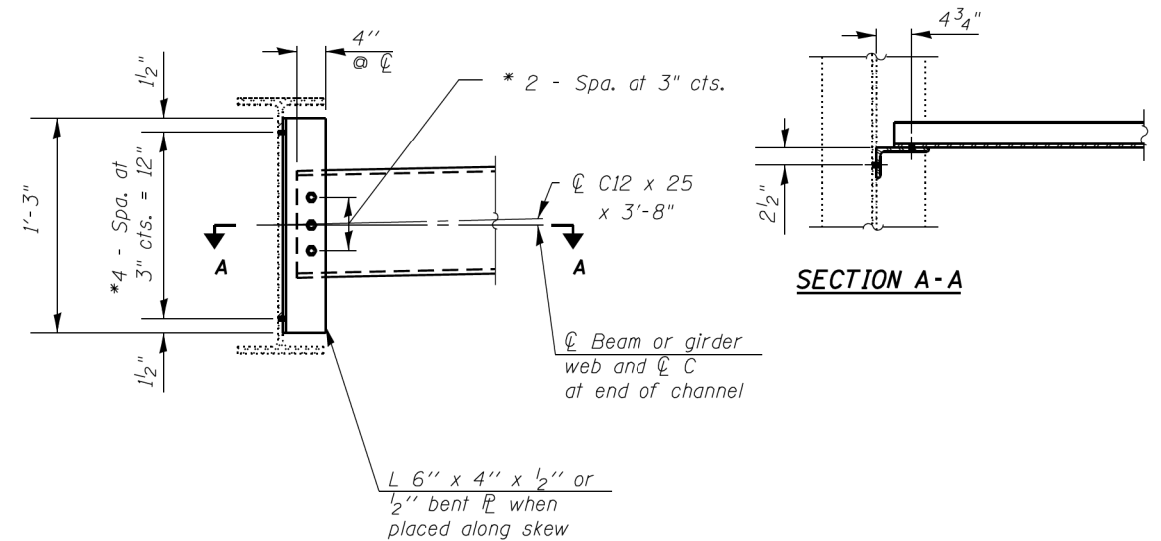
F.A. RTE.	SECTION	COUNTY	TOTAL SHEETS	SHEET NO.
• 1) FAI 290	2014-056BP	DUPAGE	11	8
	2) FAP 344	CONTRACT NO. 60Y76		
ILLINOIS FED. AID PROJECT				



ELEVATION BEAM 1 (N.E.), Beam 1 (S.E.) AND Beam 1A (S.E.)

N.E. - North End
S.E. - South End

DETAIL A
SN 022-0045



INTERIOR DIAPHRAGM D
SN 022-0045

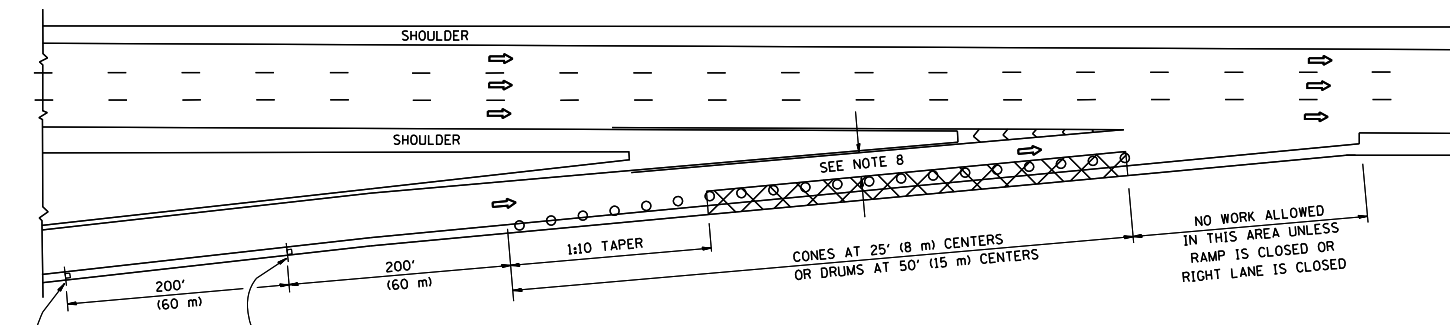
FILE NAME =	USER NAME = rozeqem	DESIGNED -	REVISED -
ci:\pwork\pwork\rozeqem\d0409160\0102015-sh1-plan.dgn		DRAWN -	REVISED -
Default	PLOT SCALE = 100.0000' / 1in.	CHECKED -	REVISED -
	PLOT DATE = 8/11/2014	DATE -	REVISED -

STATE OF ILLINOIS
DEPARTMENT OF TRANSPORTATION

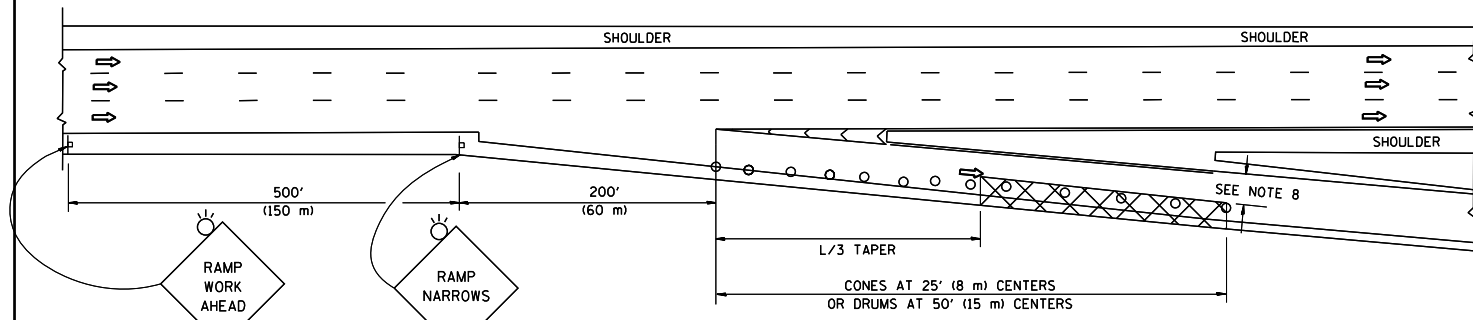
SN 022-0045			
DIAPHRAGM & STRUCTURAL STEEL DETAILS			
SCALE: NTS	SHEET 3 OF 3 SHEETS	STA. TO STA.	

F.A. RTE.	SECTION	COUNTY	TOTAL SHEETS	SHEET NO.
*	2014-056BP		11	9
*1) FAI 290	2) FAP 344	CONTRACT NO. 60Y76		
ILLINOIS FED. AID PROJECT				

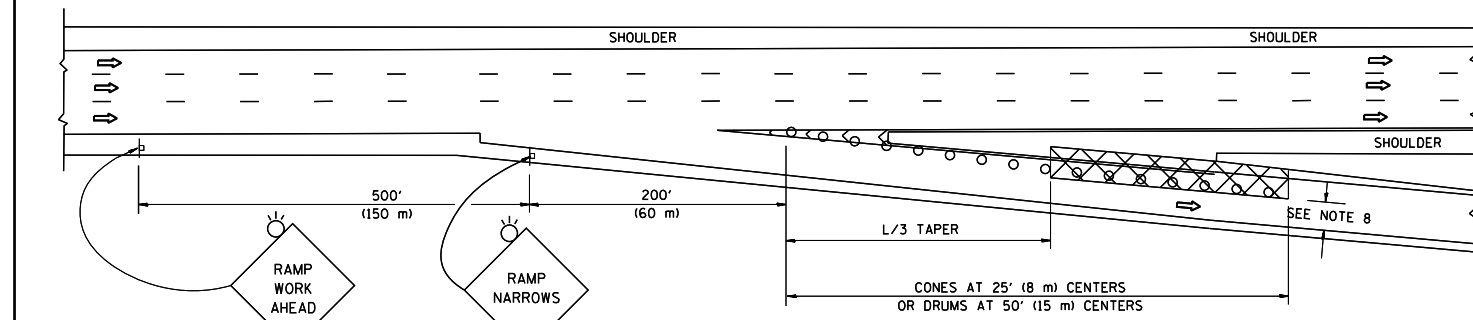
PARTIAL RAMP CLOSURE DETAILS



TYPICAL ENTRANCE RAMP



TYPICAL EXIT RAMP



TYPICAL EXIT RAMP

SYMBOLS

- ACTIVE WORK AREA
- SIGN ON PORTABLE OR PERMANENT SUPPORT
- FLAGGER WITH CONTROL SIGN
- TYPE II BARRICADE OR DRUM WITH STEADY BURN MONO-DIRECTIONAL LIGHT
- CONE, DRUM OR BARRICADE
- IMPACT ATTENUATOR OF TYPE AND TEST LEVEL SPECIFIED

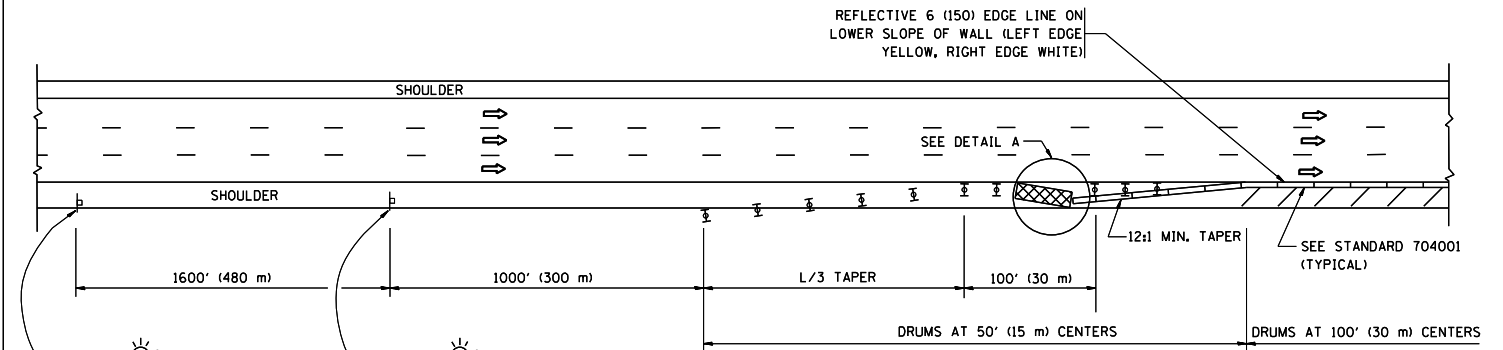
GENERAL NOTES

1. THE "L" DISTANCE EQUALS:

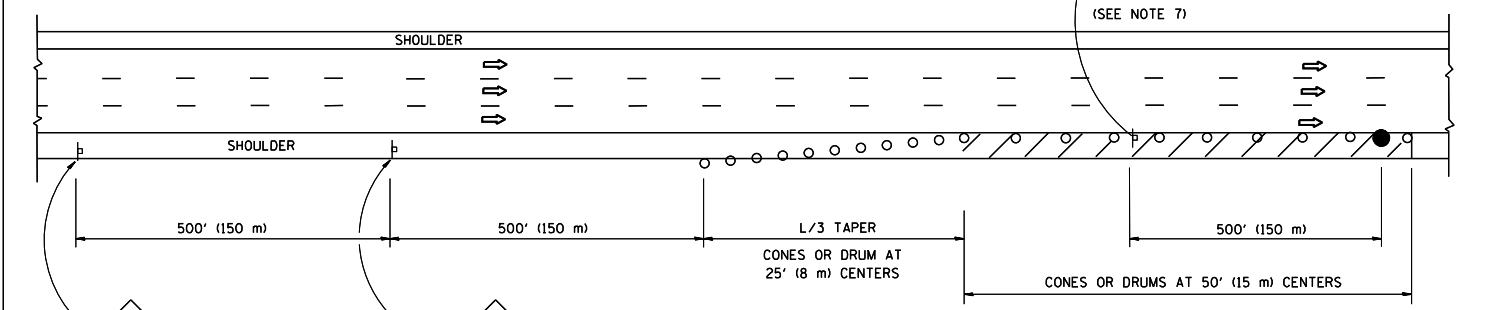
SPEED LIMIT	FORMULAS
45 mph (80 km/h) OR GREATER:	METRIC ENGLISH
	$L=0.65(W)(S)$ $L=(W)(S)$

W = WIDTH OF OFFSET IN FEET (METERS)
S = NORMAL POSTED SPEED MPH (KM/H)
2. PLASTIC DRUMS WITH HIGH PERFORMANCE REFLECTIVE SHEETING AND STEADY BURNING LIGHTS ARE REQUIRED FOR ALL NIGHTTIME CLOSURES.
3. ALL SIGNS SHALL BE POST MOUNTED IF THE CLOSURE TIME EXCEEDS FOUR DAYS.
4. FLASHING LIGHTS SHALL BE USED DURING THE HOURS OF DARKNESS AND SHALL BE INSTALLED ABOVE THE FIRST TWO SETS OF SIGNS.
5. THE IMPACT ATTENUATOR, TEMPORARY IS NOT REQUIRED WHEN THE TEMPORARY CONCRETE BARRIER WALL IS PROTECTED BY OR IS TIED INTO THE EXISTING GUARDRAIL. IF OFFSET IS LESS THAN 5 FEET USE NARROW USE TYPE DEVICE TO MEET NCHRP350/MASH.
6. AUTHORIZATION FROM THE DISTRICT'S BUREAU OF TRAFFIC IS REQUIRED FOR ALL FREEWAY CLOSURES.
7. THE FLAGGER AND FLAGGER SIGN ARE REQUIRED AT THE ABOVE WORK SITES WHEN:
 - a. FOUR OR MORE WORK VEHICLES ENTER THE TRAFFIC LANES IN A ONE HOUR PERIOD.
 - b. THE WORK ACTIVITY REQUIRES FREQUENT ENCROACHMENT INTO THE LANE OPEN TO TRAFFIC.
 THE FLAGGER SHALL BE STATIONED APPROXIMATELY 100' (30 m) TO 200' (60 m) IN ADVANCE OF THE WORKERS.
8. 12' MIN. WIDTH TANGENT SECTION
16' MIN. WIDTH CURVE SECTION.

SHOULDER CLOSURE DETAILS

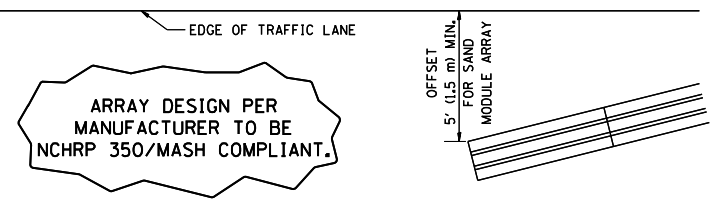


PERMANENT SHOULDER CLOSURE



DAYTIME SHOULDER CLOSURE

THIS DETAIL IS USED WHERE:
1. VEHICLES, EQUIPMENT, WORKERS OR THEIR ACTIVITIES ENCROACH IN AN AREA CLOSER THAN 15' (4.5 m) TO THE EDGE OF PAVEMENT FOR A PERIOD IN EXCESS OF 15 MINUTES.



DETAIL "A"
IMPACT ATTENUATOR, TEMPORARY
(SEE NOTE 5)

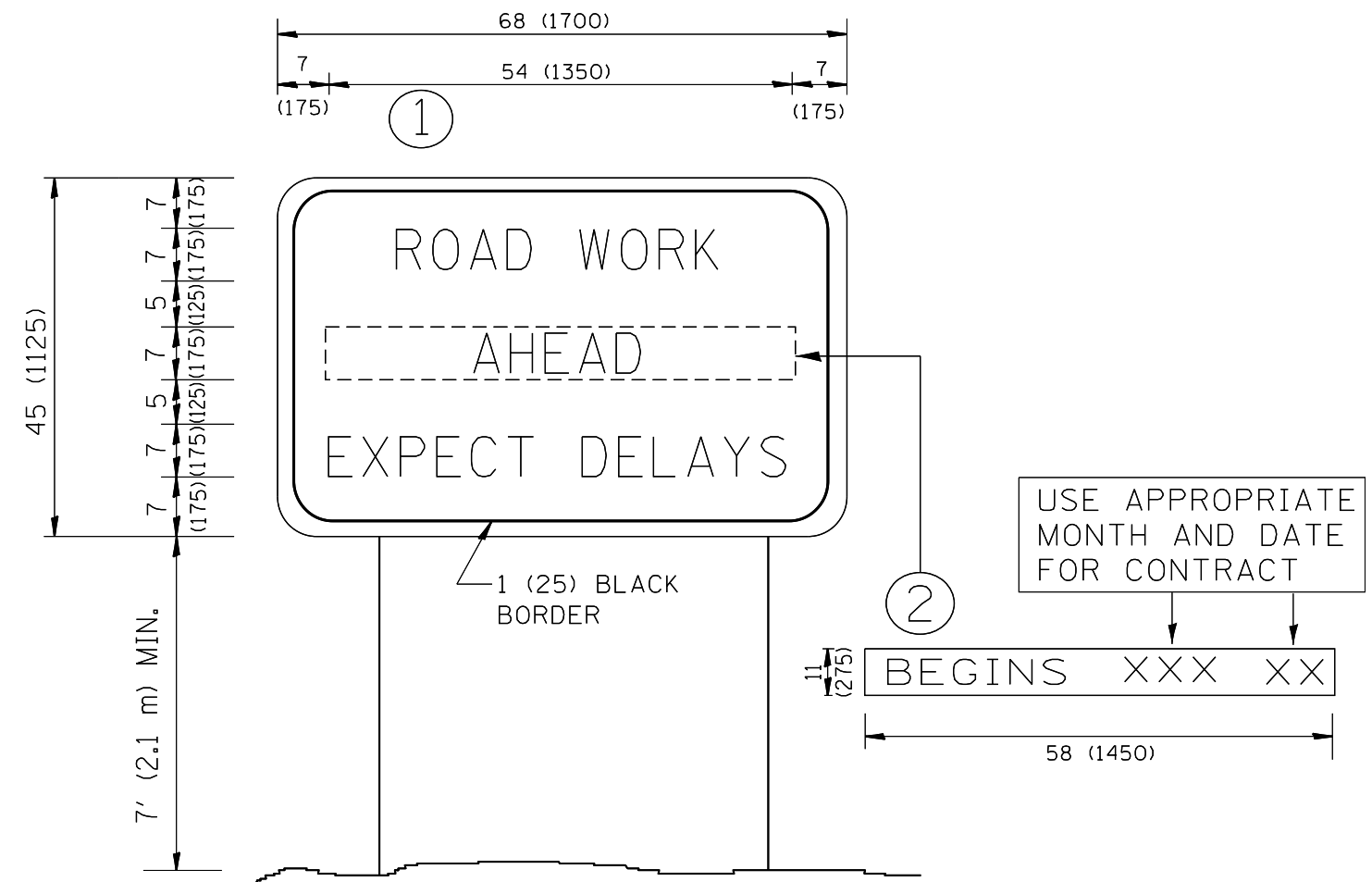
ALL DIMENSIONS ARE IN INCHES (MILLIMETERS) UNLESS OTHERWISE SHOWN.

FILE NAME =	USER NAME = razeqem	DESIGNED -	REVISED - J.A.F. 12-06
et:\pwork\pwork\razeqem\0409160\102015-shr-plan.dgn		DRAWN - D.W.S.	REVISED - S.P.B. 01-07
	PLOT SCALE = 100.0000' / in.	CHECKED -	REVISED - S.P.B. 12-09
	PLOT DATE = 8/11/2014	DATE - 11-96	REVISED - M.D. 06-13

STATE OF ILLINOIS
DEPARTMENT OF TRANSPORTATION

TRAFFIC CONTROL DETAILS FOR FREEWAY			
SHOULDER CLOSURES AND PARTIAL RAMP CLOSURES			
SCALE: NONE	SHEET NO. 1 OF 1 SHEETS	STA.	TO STA.

F.A. RTE.	SECTION	COUNTY	TOTAL SHEETS	SHEET NO.
	2014-056BP	DUPAGE	11	10
TC-17		CONTRACT NO. 60Y76		
FED. ROAD DIST. NO. 1 ILLINOIS FED. AID PROJECT				



NOTES:

1. USE BLACK LETTERING ON ORANGE BACKGROUND.
2. ERECT SIGNS IN ADVANCE OF THE LOCATION FOR THE "ROAD CONSTRUCTION AHEAD" SIGN AT LOCATIONS AS DIRECTED BY THE ENGINEER.
3. ERECT SIGN ① WITH INSTALLED PANEL ② ONE WEEK PRIOR TO THE START OF CONSTRUCTION.
4. REMOVE PANEL ② SOON AFTER THE START OF CONSTRUCTION.
5. SEE SPECIAL PROVISION FOR "TEMPORARY INFORMATION SIGNING" FOR ADDITIONAL INFORMATION.
6. ONE SIGN ASSEMBLY EQUALS 25.70 SQ. FT. (2.3 SQ. M.)
7. SHALL BE PAID FOR AS TEMPORARY INFORMATION SIGNING.

ALL DIMENSIONS ARE IN INCHES (MILLIMETERS) UNLESS OTHERWISE SHOWN.

FILE NAME =	USER NAME = razeqem	DESIGNED -	REVISED - R. MIRS 09-15-97
et:\pw\work\p1dot\razeqem\d0409160\DI02015-shr-pla.dgn		DRAWN -	REVISED - R. MIRS 12-11-97
	PLOT SCALE = 100.0000' / in.	CHECKED -	REVISED - T. RAMMACHER 02-02-99
	PLOT DATE = 8/11/2014	DATE -	REVISED - C. JUCIUS 01-31-07

**STATE OF ILLINOIS
DEPARTMENT OF TRANSPORTATION**

**ARTERIAL ROAD
INFORMATION SIGN**

SCALE: NONE SHEET NO. 1 OF 1 SHEETS STA. TO STA.

F.A. RTE.	SECTION	COUNTY	TOTAL SHEETS	SHEET NO.
*	2014-056BP	DUPAGE	11	11
TC-22		CONTRACT NO. 60Y76		
FED. ROAD DIST. NO. 1 ILLINOIS FED. AID PROJECT				