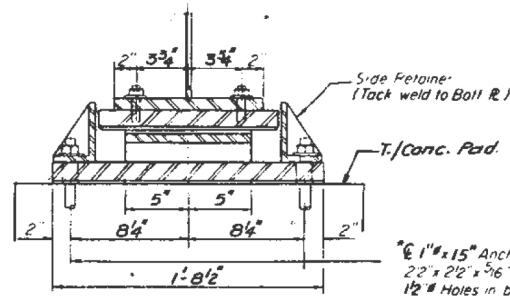
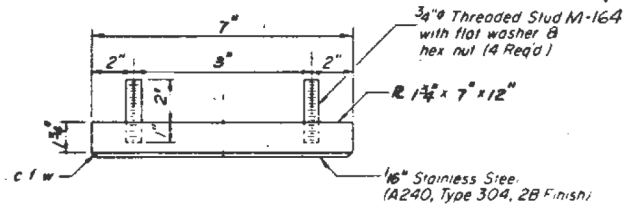


SECTION AT ABUT.

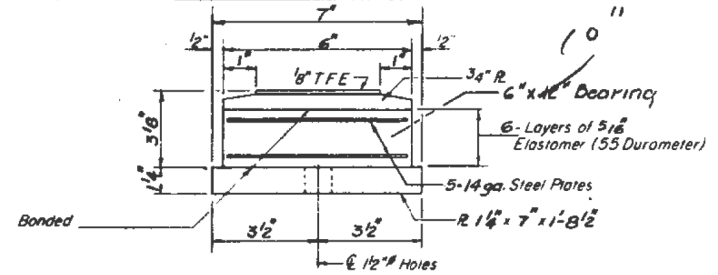


SECTION A-A

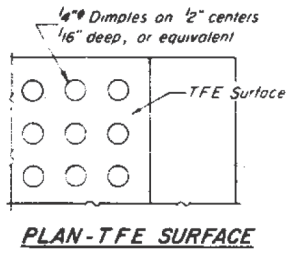
TYPE II TFE ELASTOMERIC EXP. BRG.
(West Abutment Beams A, B, C, D & E
East Abutment Beams A & B)



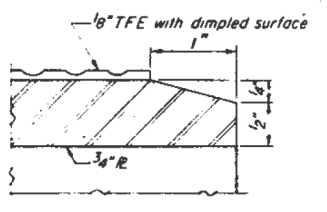
TOP BEARING ASSEMBLY



BOTTOM BEARING ASSEMBLY



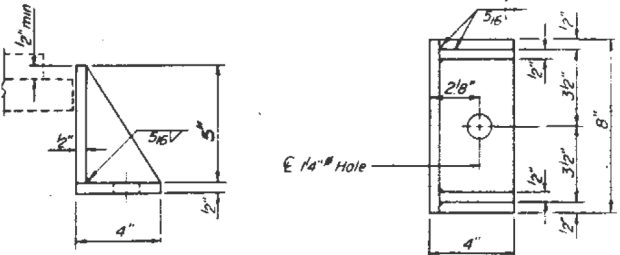
PLAN-TFE SURFACE



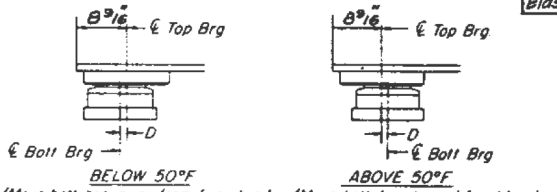
SECTION THRU TFE

*Note: After girders have been erected holes at expansion bearings shall be drilled and anchor bolts grouted in place. Anchor bolts at fixed bearings may be built into the masonry. For anchor bolt installation detail see sheet # 26.

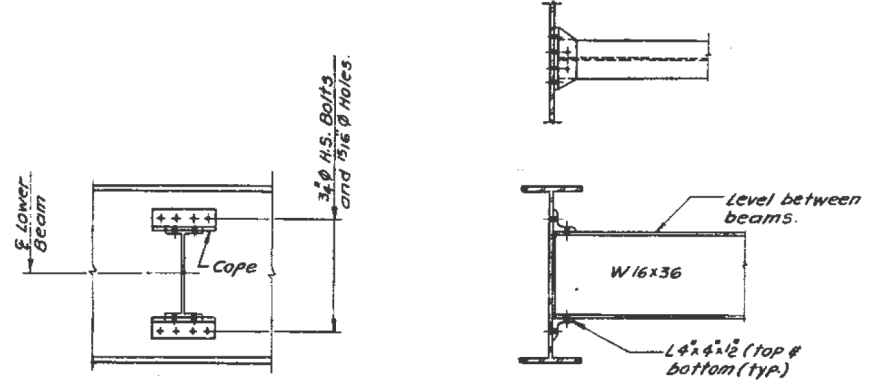
Note: The 1/8" TFE sheet shall be bonded directly to the top steel plate with a two-component, medium viscosity epoxy resin, conforming to the requirements of the Federal Specification MMM-A-134, Type I. The bond agent shall be applied on the full area of the contact surfaces. Bonding of 1/8" TFE sheet during vulcanizing process will be permitted provided the process and method of adjusting assembly height is approved by the Engineer.



SIDE RETAINER
(Equivalent rolled angle with stiffeners shall be allowed in lieu of welded plates.)

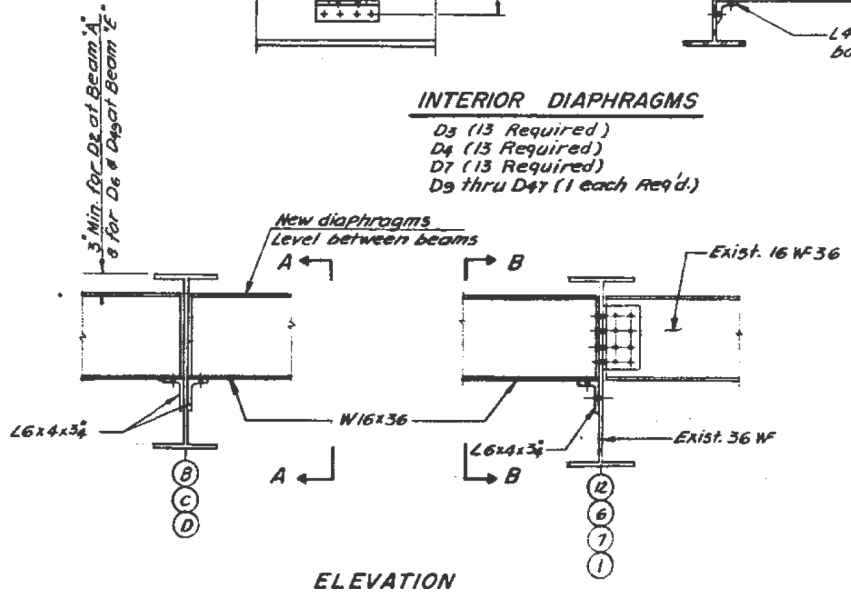


SETTING ANCHOR BOLTS AT EXP. BRG.
D = 1/8" per each 10" of expansion for every 15° temp change from the normal temp of 50°F

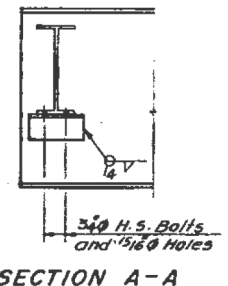


INTERIOR DIAPHRAGMS

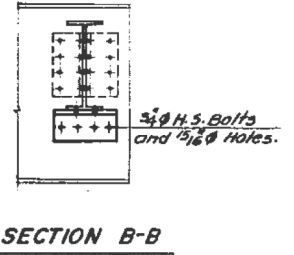
- D5 (13 Required)
- D4 (15 Required)
- D7 (13 Required)
- D9 thru D47 (1 each Req'd)



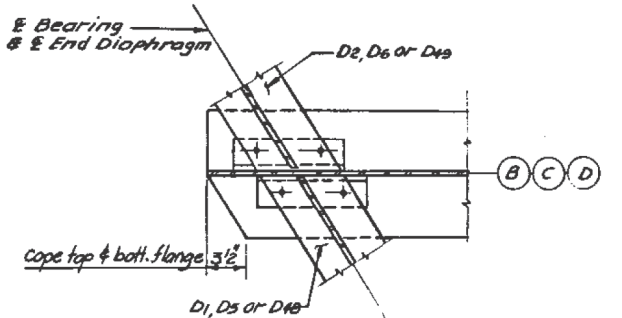
ELEVATION



SECTION A-A



SECTION B-B



PLAN END DIAPHRAGMS

BILL OF MATERIAL

| ITEM | UNIT | QUANTITY |
|---------------------------------------|------|----------|
| Blastomeric Bearing Assembly, Type II | Each | 7 |

- D1 (2, Req'd.), D2 (2, Req'd.)
- D5 (1, Req'd.), D6 (2, Req'd.), D8 (2, Req'd.)
- D48 (1 Req'd.), D49 (2, Req'd.)