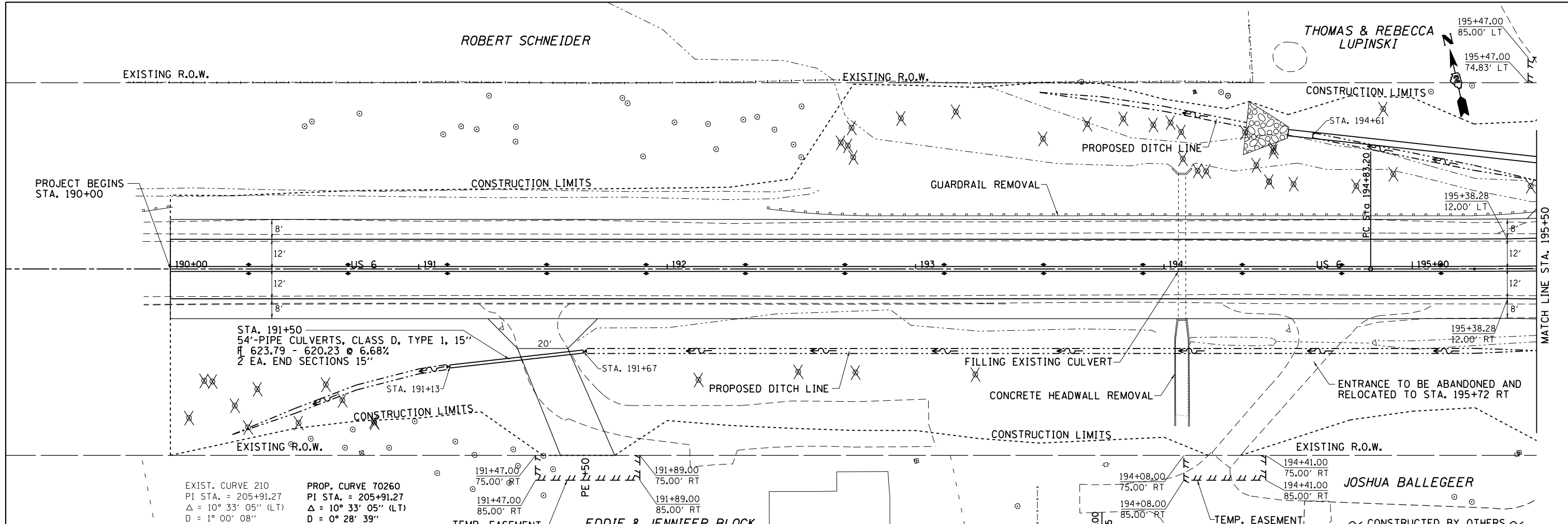


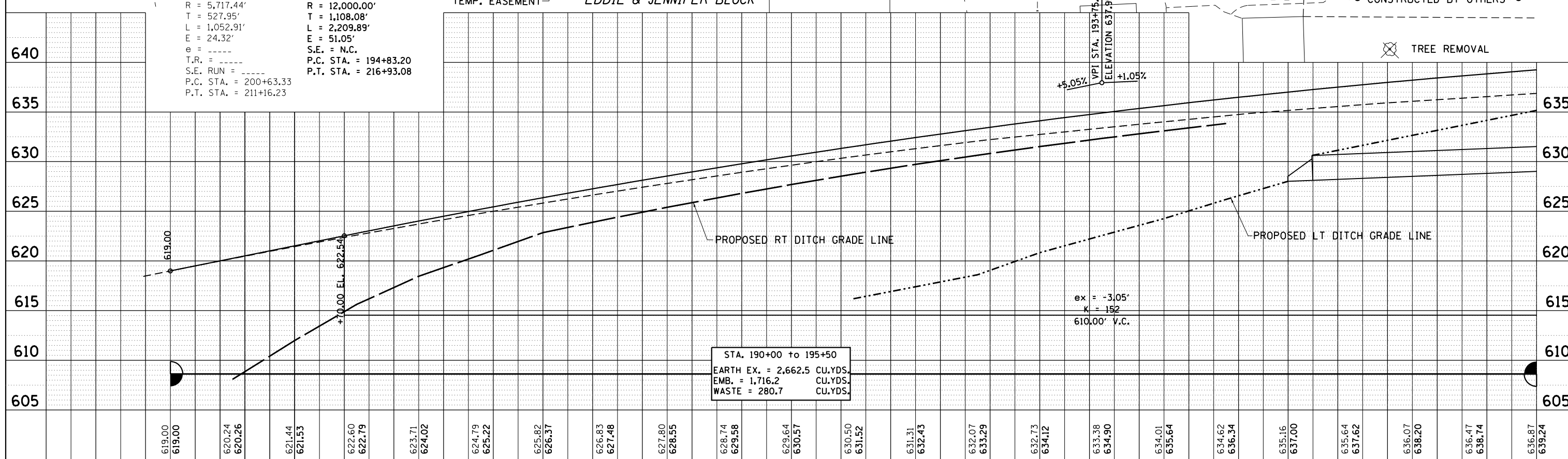
PLAN	SURVEYED	BY	DATE
	PLOTTED		
	ALIGNED		
	CHECKED		
	FILED		
	NO.		

PROFILE	SURVEYED	BY	DATE
	PLOTTED		
	GRADES		
	CHECKED		
	STRUCTURE		
	NOTATIONS		
	CHP		
	NO.		



EXIST. CURVE 210
 PI STA. = 205+91.27
 $\Delta = 10^\circ 33' 05''$ (LT)
 $R = 1^\circ 00' 08''$
 $D = 5,717.44'$
 $T = 527.95'$
 $L = 1,052.91'$
 $E = 24.32'$
 $e =$
 $T.R. =$
 $S.E. RUN =$
 $P.C. STA. = 200+63.33$
 $P.T. STA. = 211+16.23$

PROP. CURVE 70260
 PI STA. = 205+91.27
 $\Delta = 10^\circ 33' 05''$ (LT)
 $R = 0^\circ 28' 39''$
 $D = 12,000.00'$
 $T = 1,108.08'$
 $L = 2,209.89'$
 $E = 51.05'$
 $S.E. = N.C.$
 $P.C. STA. = 194+83.20$
 $P.T. STA. = 216+93.08$



STA. 190+00 to 195+50
 EARTH EX. = 2,662.5 CU.YDS.
 EMB. = 1,716.2 CU.YDS.
 WASTE = 280.7 CU.YDS.

FILE NAME =	USER NAME = cushmanbw	DESIGNED -	REVISED -	STATE OF ILLINOIS DEPARTMENT OF TRANSPORTATION	US 6 PLAN & PROFILE			F.A.U. R.T.E.	SECTION	COUNTY	TOTAL SHEETS	SHEET NO.	
Default		DRAWN -	REVISED -		SCALE:	SHEET	OF	SHEETS	STA.	TO	STA.	ILLINOIS FED. AID PROJECT	
		CHECKED -	REVISED -									CONTRACT NO. 64J43	
		DATE -	REVISED -										

* 5789 & 5861