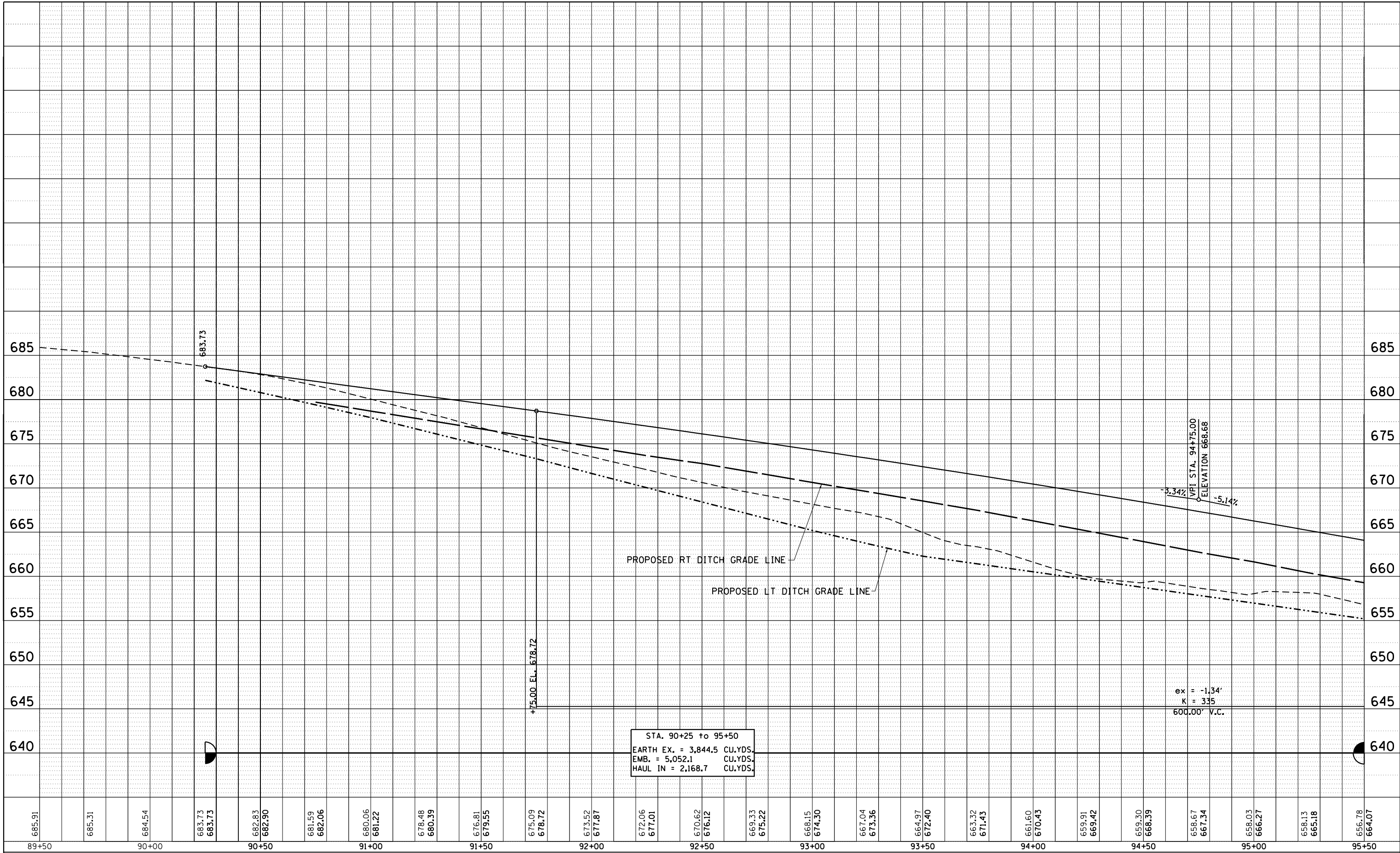


PLAN	SURVEYED	BY	DATE
	PLOTTED		
	ALIGNED		
	CHECKED		
	FILED		
NOTE BOOK NO.	CARD FILE NAME		

PROFILE	SURVEYED	BY	DATE
	PLOTTED		
	GRADES CHECKED		
	STRUCTURE NOTATIONS CHECKED		
NOTE BOOK NO.			



STA. 90+25 to 95+50  
 EARTH EX. = 3,844.5 CU.YDS.  
 EMB. = 5,052.1 CU.YDS.  
 HAUL IN = 2,168.7 CU.YDS.

STATE OF ILLINOIS  
 DEPARTMENT OF TRANSPORTATION

400TH ST.  
 PROFILE

FILE NAME =	USER NAME = cushmanbw	DESIGNED -	REVISED -
c:\pwork\pwork\cushmanbw\d0333009\F201709-sht-pln1.dgn		DRAWN -	REVISED -
Default	PLOT SCALE = 40.0000' / in.	CHECKED -	REVISED -
	PLOT DATE = Fri Aug 01 11:17:35 2014	DATE -	REVISED -

SCALE:	SHEET	OF	SHEETS	STA.	TO	STA.
--------	-------	----	--------	------	----	------

F.A.U. RTE.	SECTION	COUNTY	TOTAL SHEETS	SHEET NO.
*	2R-1	HENRY	235	40
CONTRACT NO. 64J43			ILLINOIS FED. AID PROJECT	

\* 5789 & 5861