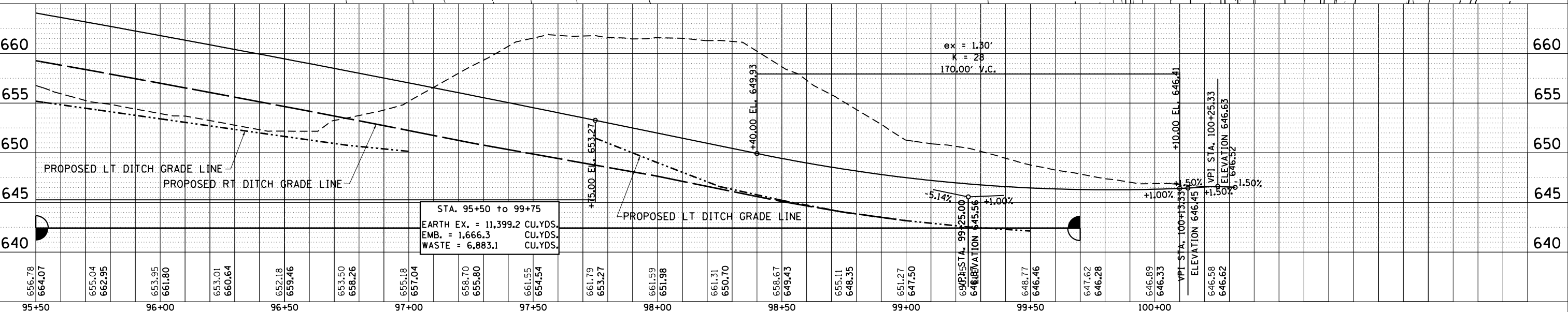
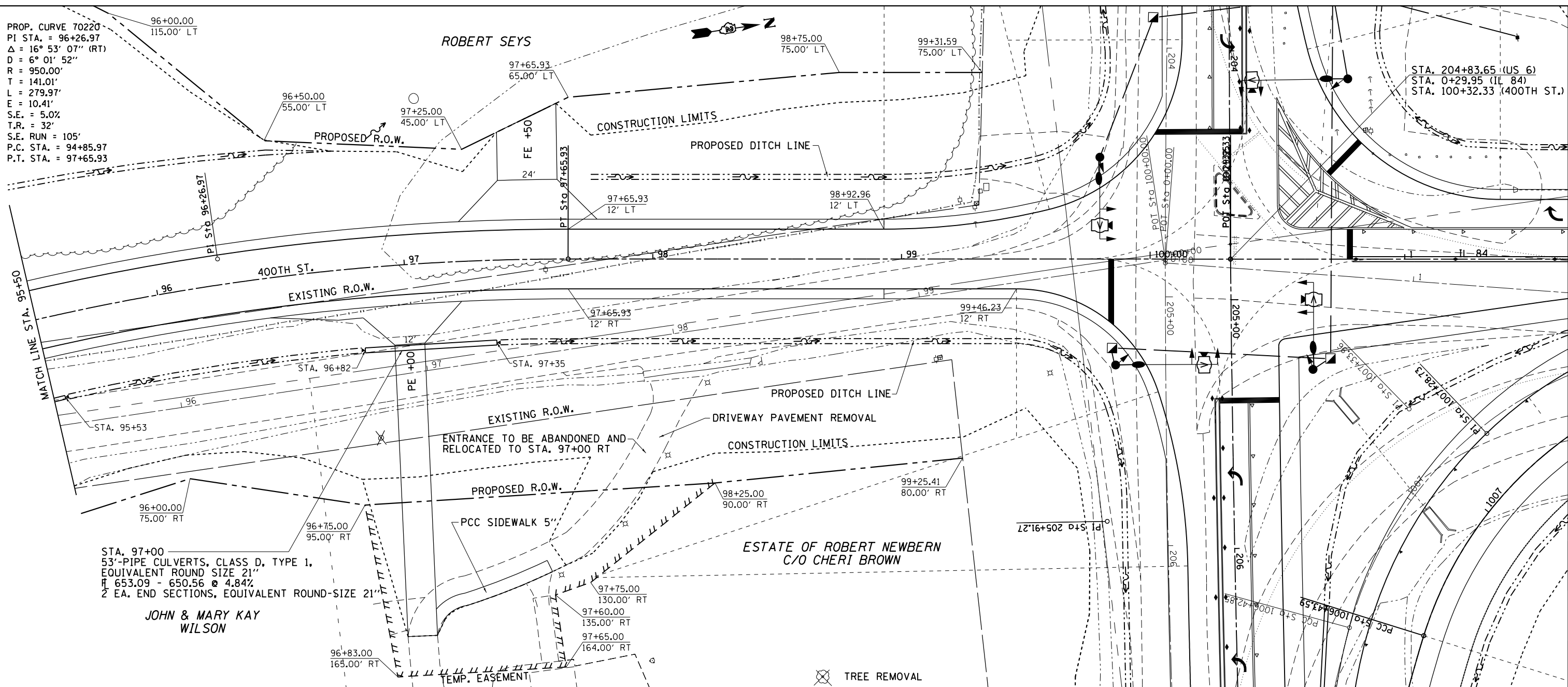


PROP. CURVE 70220
 PI STA. = 96+26.97
 $\Delta = 16^\circ 53' 07''$ (RT)
 $D = 6^\circ 01' 52''$
 $R = 950.00'$
 $T = 141.01'$
 $L = 279.97'$
 $E = 10.41'$
 $S.E. = 5.0\%$
 $T.R. = 32'$
 $S.E. RUN = 105'$
 $P.C. STA. = 94+85.97$
 $P.T. STA. = 97+65.93$

PLAN	SURVEYED	DATE
	PLOTTED	BY
	NOTED	
	CHECKED	
	FILED	
	NO.	

PROFILE	SURVEYED	DATE
	PLOTTED	BY
	NOTED	
	CHECKED	
	FILED	
	NO.	



FILE NAME =	USER NAME = cushmanbw	DESIGNED -	REVISED -	STATE OF ILLINOIS DEPARTMENT OF TRANSPORTATION	400TH ST. PLAN & PROFILE	F.A.U. RTE.	SECTION	COUNTY	TOTAL SHEETS	SHEET NO.
Default	PLOT SCALE = 40.0000' / in.	DRAWN -	REVISED -			2R-1	HENRY	235	41	
	PLOT DATE = Fri Aug 01 11:17:51 2014	CHECKED -	REVISED -			CONTRACT NO. 64J43				
		DATE -	REVISED -			ILLINOIS FED. AID PROJECT				