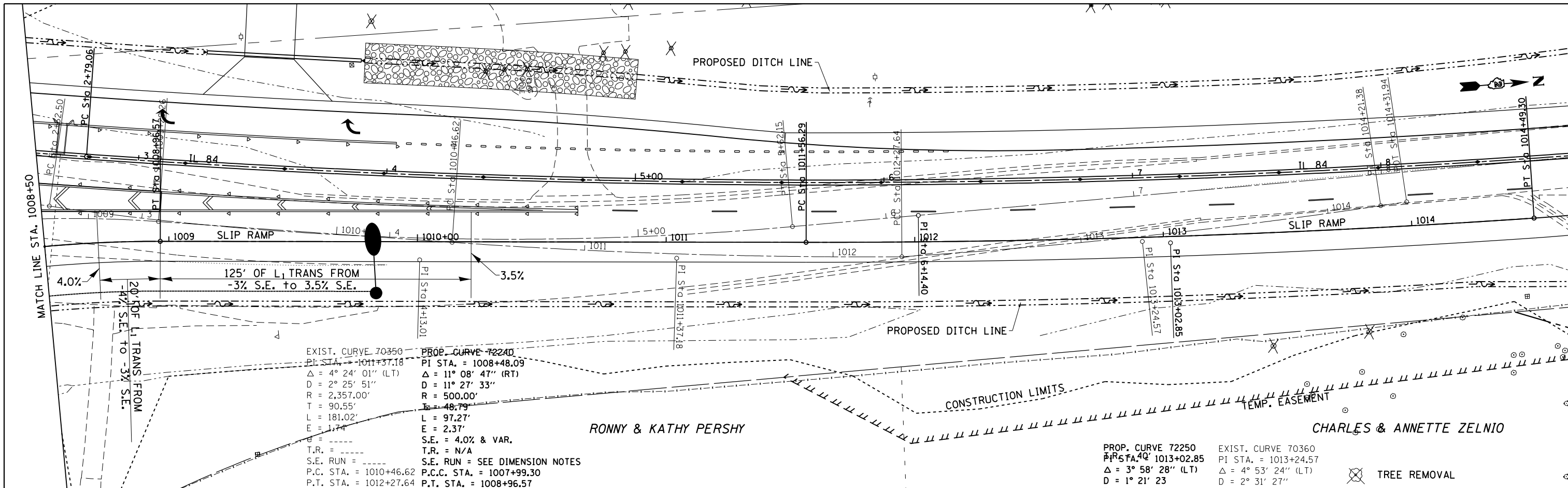


PLAN	SURVEYED	BY	DATE
	PLOTTED		
	ALIGNED		
	CHECKED		
	FILED		
	NO.		
	NO.		
	NO.		

PROFILE	SURVEYED	BY	DATE
	PLOTTED		
	GRADES		
	CHECKED		
	STRUCTURE		
	NOTATIONS		
	CHKD		



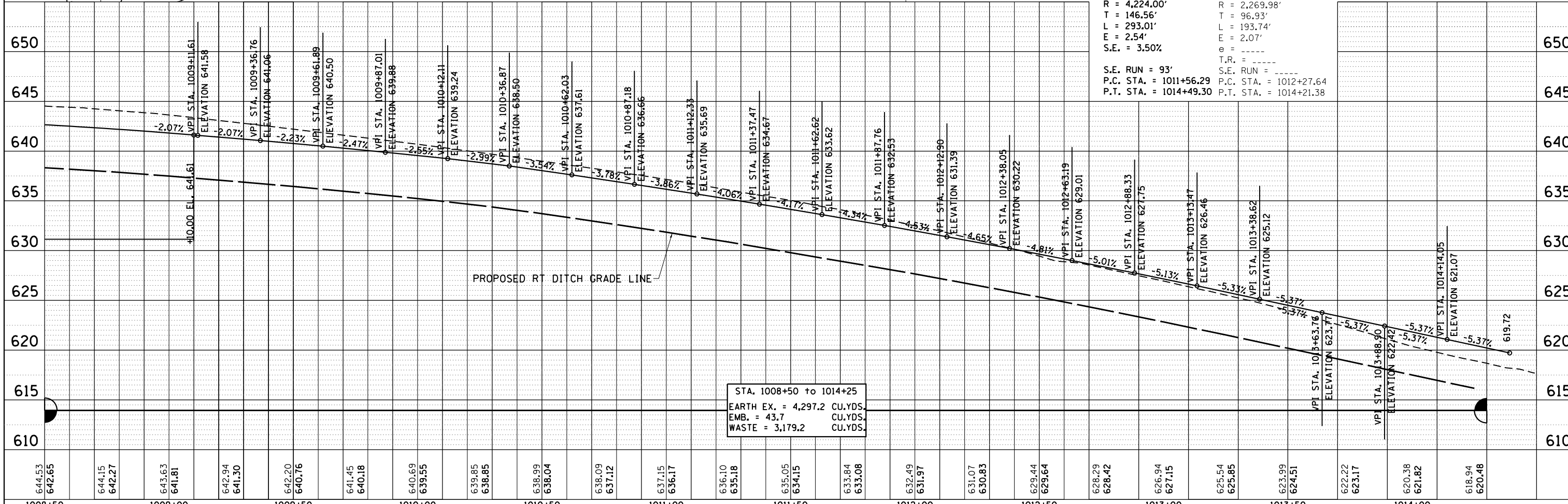
EXIST. CURVE 70350
 PI STA. = 1011+37.18
 $\Delta = 4^\circ 24' 01''$ (LT)
 $D = 2^\circ 25' 51''$
 $R = 2,357.00'$
 $T = 90.55'$
 $L = 181.02'$
 $E = 1.74'$
 $T.R. =$
 $S.E. RUN =$
 $P.C. STA. = 1010+46.62$
 $P.T. STA. = 1012+27.64$

PROP. CURVE 72240
 PI STA. = 1008+48.09
 $\Delta = 11^\circ 08' 47''$ (RT)
 $D = 11^\circ 27' 33''$
 $R = 500.00'$
 $L = 48.79'$
 $E = 97.27'$
 $F = 2.37'$
 $S.E. = 4.0\% \& \text{VAR.}$
 $T.R. = N/A$
 $S.E. RUN = \text{SEE DIMENSION NOTES}$
 $P.C.C. STA. = 1007+99.30$
 $P.T. STA. = 1008+96.57$

PROP. CURVE 72250
 PI STA. = 1013+02.85
 $\Delta = 3^\circ 58' 28''$ (LT)
 $D = 1^\circ 21' 23''$
 $R = 4,224.00'$
 $T = 146.56'$
 $L = 293.01'$
 $E = 2.54'$
 $S.E. = 3.50\%$

EXIST. CURVE 70360
 PI STA. = 1013+24.57
 $\Delta = 4^\circ 53' 24''$ (LT)
 $D = 2^\circ 31' 27''$
 $R = 2,269.98'$
 $T = 96.93'$
 $L = 193.74'$
 $E = 2.07'$
 $T.R. =$
 $S.E. RUN =$
 $P.C. STA. = 1012+27.64$
 $P.T. STA. = 1014+21.38$

TREE REMOVAL



STA. 1008+50 to 1014+25
 EARTH EX. = 4,297.2 CU.YDS.
 EMB. = 43.7 CU.YDS.
 WASTE = 3,179.2 CU.YDS.

FILE NAME =	USER NAME = cushmanbw	DESIGNED -	REVISED -	STATE OF ILLINOIS DEPARTMENT OF TRANSPORTATION	SLIP RAMP PLAN & PROFILE	F.A.U. RT.	SECTION	COUNTY	TOTAL SHEETS	SHEET NO.	
Default	c:\pwork\pwork\cushmanbw\d0333009\F201709-sht-pln1.dgn	DRAWN -	REVISED -			*	2R-1	HENRY	235	47	
	PLOT SCALE = 40.0000' / in.	CHECKED -	REVISED -			CONTRACT NO. 64J43					
	PLOT DATE = Fri Aug 01 11:19:45 2014	DATE -	REVISED -			ILLINOIS FED. AID PROJECT					