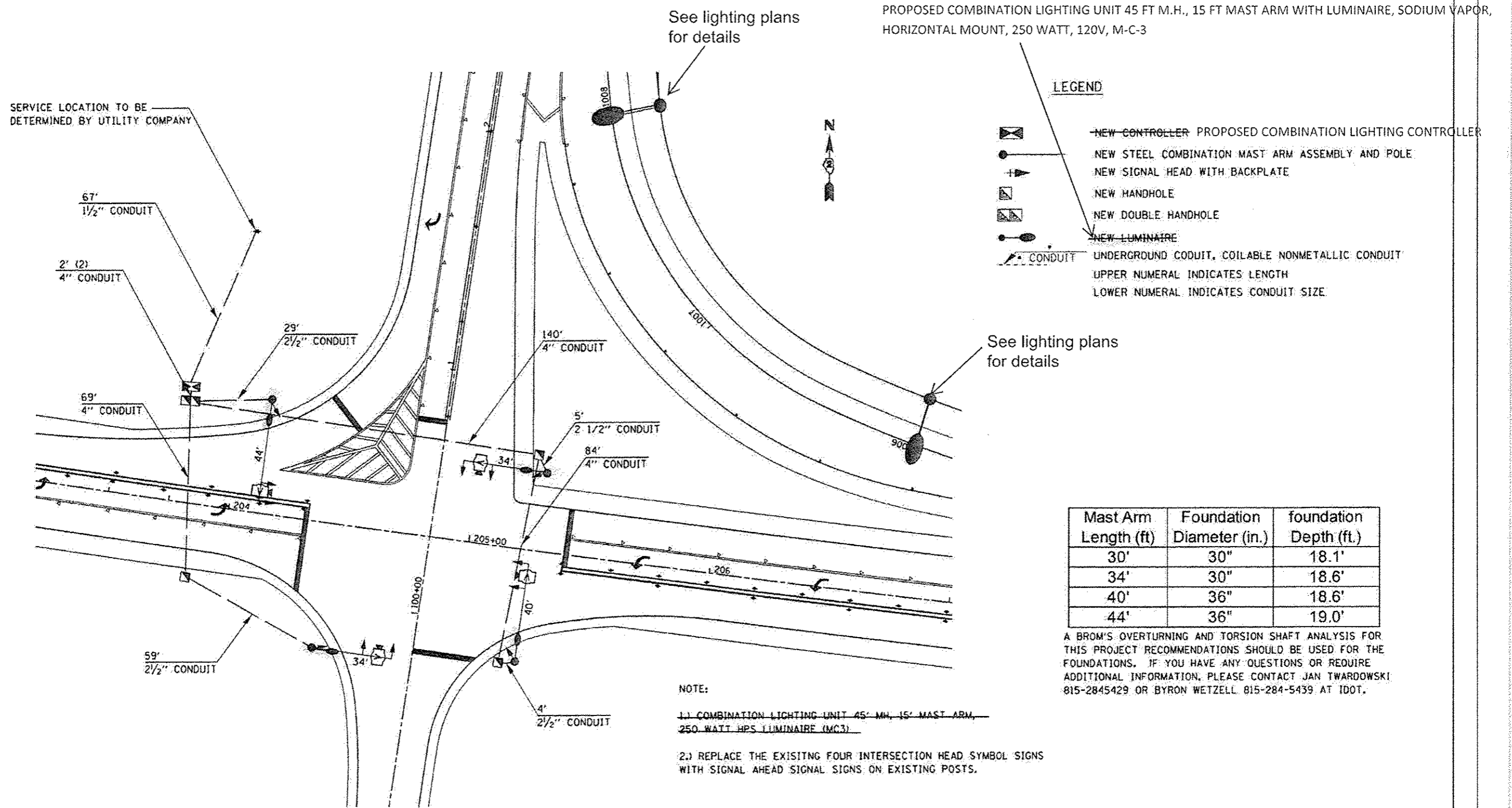








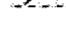
SERVICE LOCATION TO BE DETERMINED BY UTILITY COMPANY



See lighting plans for details

PROPOSED COMBINATION LIGHTING UNIT 45 FT M.H., 15 FT MAST ARM WITH LUMINAIRE, SODIUM VAPOR, HORIZONTAL MOUNT, 250 WATT, 120V, M-C-3

LEGEND

-  NEW CONTROLLER PROPOSED COMBINATION LIGHTING CONTROLLER
 -  NEW STEEL COMBINATION MAST ARM ASSEMBLY AND POLE
 -  NEW SIGNAL HEAD WITH BACKPLATE
 -  NEW HANDHOLE
 -  NEW DOUBLE HANDHOLE
 -  NEW LUMINAIRE
 -  UNDERGROUND CONDUIT, COILABLE NONMETALLIC CONDUIT
- UPPER NUMERAL INDICATES LENGTH
LOWER NUMERAL INDICATES CONDUIT SIZE

See lighting plans for details

Mast Arm Length (ft)	Foundation Diameter (in.)	foundation Depth (ft.)
30'	30"	18.1'
34'	30"	18.6'
40'	36"	18.6'
44'	36"	19.0'

A BROM'S OVERTURNING AND TORSION SHAFT ANALYSIS FOR THIS PROJECT RECOMMENDATIONS SHOULD BE USED FOR THE FOUNDATIONS. IF YOU HAVE ANY QUESTIONS OR REQUIRE ADDITIONAL INFORMATION, PLEASE CONTACT JAN TWARDOWSKI 815-2845429 OR BYRON WETZELL 815-284-5439 AT IDOT.

- NOTE:
- 1.) COMBINATION LIGHTING UNIT 45' MH, 15' MAST ARM, 250 WATT HPS LUMINAIRE (M-C-3)
 - 2.) REPLACE THE EXISTING FOUR INTERSECTION HEAD SYMBOL SIGNS WITH SIGNAL AHEAD SIGNAL SIGNS ON EXISTING POSTS.