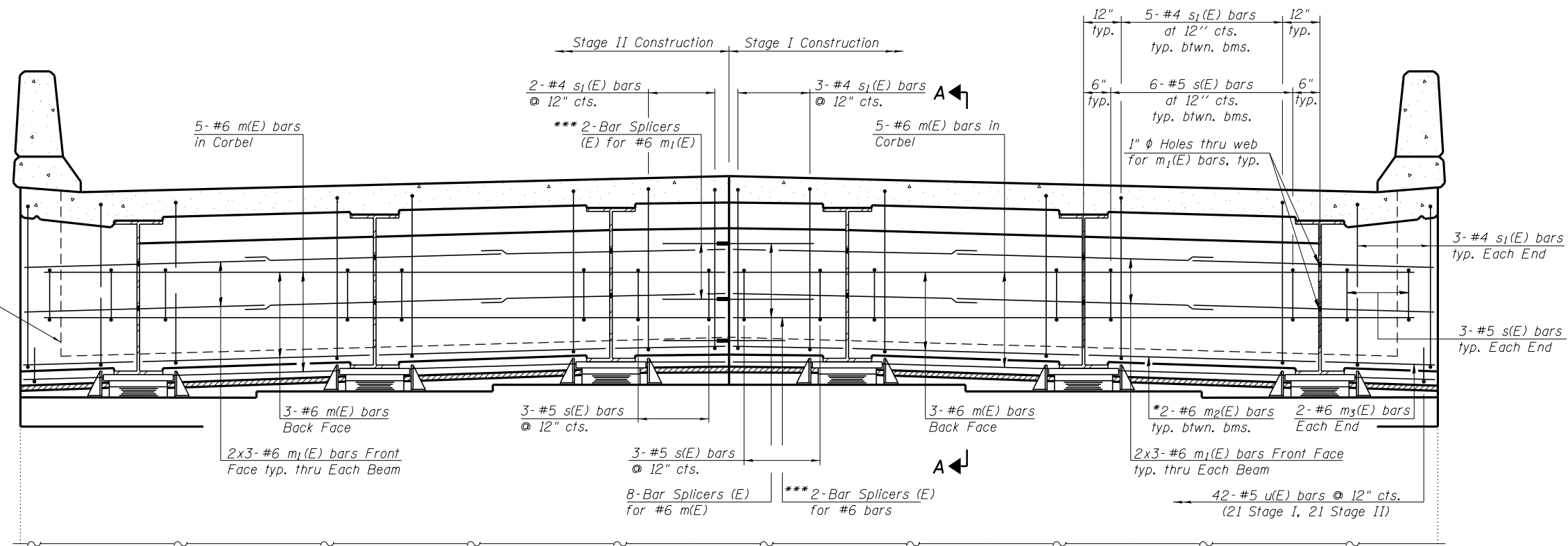
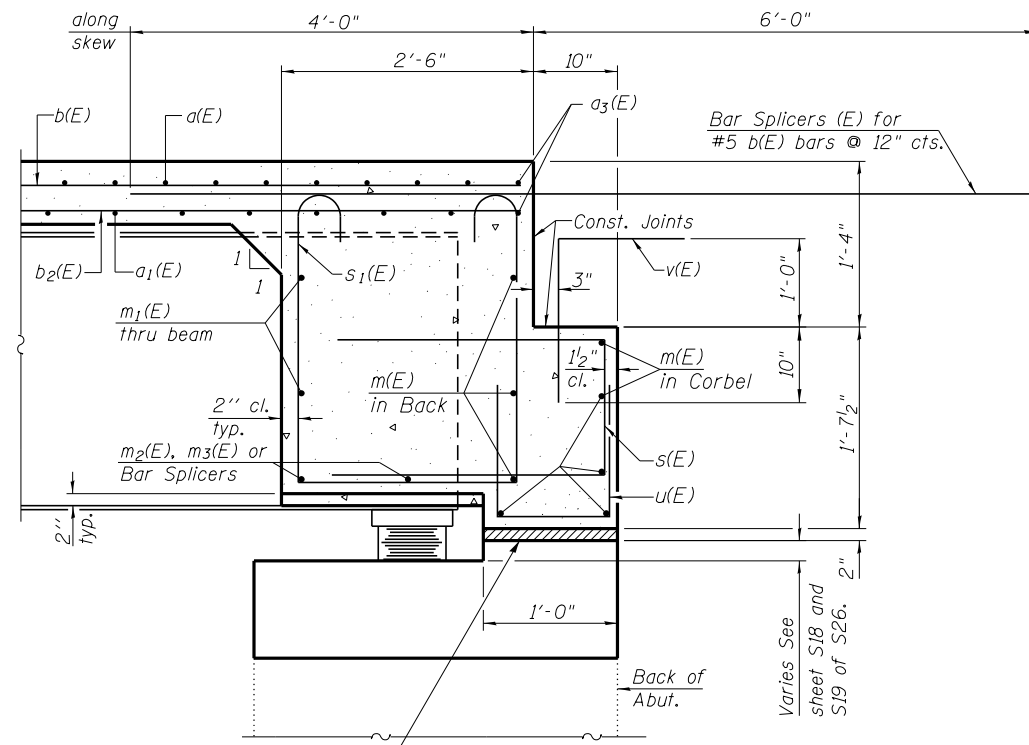


Limits of fabric reinforced elastomeric mat see sheet S18 and S19 of S26.



**DIAPHRAGM ELEVATION AT ABUTMENT**  
(Looking West at West abutment)

- \* Except at Stage line.
- \*\* Cost included with Concrete Superstructure.
- \*\*\* Use special bar splicers 3'-5" long.



\*\*2" Preformed Joint Filler (Section 1051 of the Standard Specifications) Bonded to abutment cap with Approved adhesive full width cap.

**SECTION A-A**  
Dimensions at right angles to abutment, except as shown.

Notes:  
Reinforcement bars in diaphragm are billed with superstructure on sheet S11 of S26.  
Concrete in diaphragm is included with Concrete Superstructure on sheet S11 of S26.  
Concrete in backwall is included with Concrete Structures on sheet S17 and S18 of S26.  
For details of bars s(E), s1(E), v(E) & u(E), see sheet S11 of S26.  
The s(E) and s1(E) bars shall be placed parallel to the beams. Spacing for these bars shall be at right angles to the beams.

**MIN. BAR LAP**  
#6 bar = 3'-4" (Diaphragm)

FILE NAME = c:\pds\cadd\carpenter\d\0404442\0060148-66017-018-diaphragm.dgn  
CB PROJECT NO. 108652-2

**Coombe-Bloxdorf P.C.**  
- CIVIL ENGINEERS -  
- STRUCTURAL ENGINEERS -  
- LAND SURVEYORS -  
Design Firm License No. 184-002703

USER NAME = carpenterdj	DESIGNED - AMC	REVISED -
PLOT SCALE = 0:2.0000 '1' / in.	CHECKED - GJB	REVISED -
PLOT DATE = 8/1/2014	DRAWN - CFC	REVISED -
	CHECKED - MCB	REVISED -

**STATE OF ILLINOIS**  
**DEPARTMENT OF TRANSPORTATION**

**DIAPHRAGM DETAILS**  
**STRUCTURE NO. 006-0140**

SHEET NO. S10 OF S26 SHEETS

F.A.P. RTE.	SECTION	COUNTY	TOTAL SHEETS	SHEET NO.
613	(8D-BR) BR	BUREAU	63	32
CONTRACT NO. 66A17				

ILLINOIS FED. AID PROJECT