

**END VIEW (Looking North)**

**REMOVAL AND REPAIR ELEVATION (Looking East)**

**END VIEW (Looking South)**

**REMOVAL AND REPAIR ELEVATION (Looking West)**

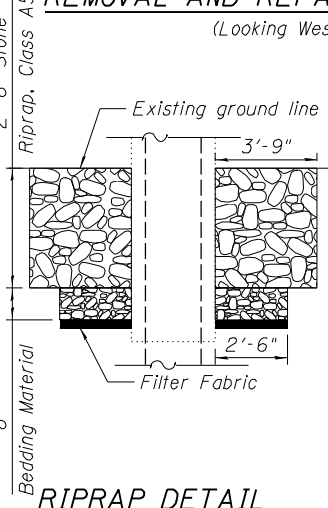
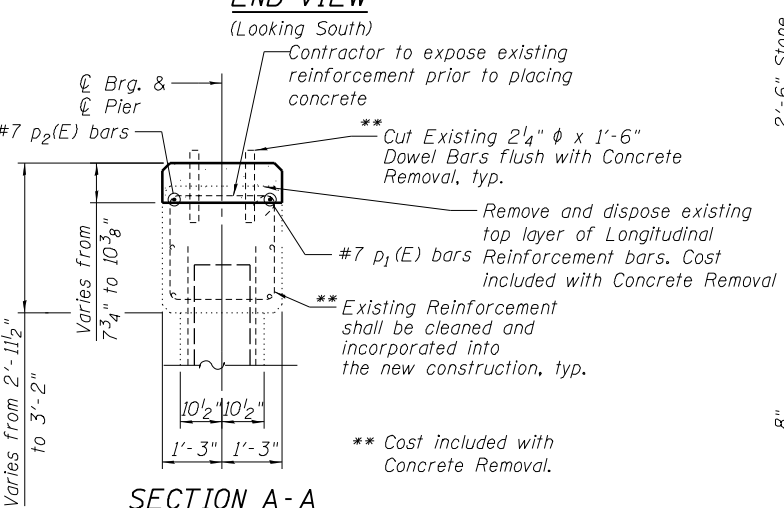
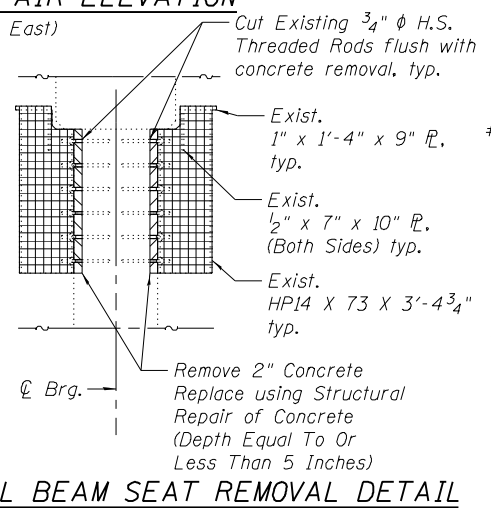
**LEGEND**

- Concrete Removal
- Structural Repair of Concrete (Depth Greater Than 5 Inches)
- Structural Repair of Concrete (Depth Equal To Or Less Than 5 Inches)
- Steel Beam Seat Removal \*\*\*
- H.L. - Hairline Crack - Not to be sealed

\* Cost of existing bearing removal is included in Concrete Removal cost.

\*\*\* Cost of Steel Beam Seat Removal is included in Removal of Existing Superstructures, typ.

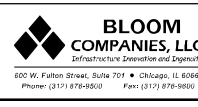
Note: Structural Repair of Concrete includes both existing damage to substructure and repair due to Steel Beam Seat Removal.



**BILL OF MATERIAL**

Bar	No.	Size	Length	Shape
p <sub>1</sub> (E)	2	#7	21'-4"	
p <sub>2</sub> (E)	2	#7	22'-11"	
Stone Riprap, Class A5		Sq. Yd.	44	
Filter Fabric		Sq. Yd.	28	
Concrete Removal		Cu. Yd.	4.8	
Concrete Structures		Cu. Yd.	3.2	
Reinforcement Bars, Epoxy Coated		Pound	190	
Structural Repair of Concrete (Depth Greater Than 5 Inches)		Sq. Ft.	46	
Structural Repair of Concrete (Depth Equal To Or Less Than 5 Inches)		Sq. Ft.	315	

FILENAME: F:\3-1308 IDDTDist\3-1308B\US34Coal\Submittals\Comments\2014 BP 11 BBS Comments Responses\CAD Files\0062140-66A17-020-Pier-1.dgn



USER NAME = bmattas	DESIGNED - KO	REVISED
PLOT SCALE = N/A	CHECKED - BCM	REVISED
PLOT DATE = 9/11/2014	DRAWN - KO	REVISED
	CHECKED - 7/31/2012	REVISED

**STATE OF ILLINOIS DEPARTMENT OF TRANSPORTATION**

**PIER 1 DETAILS STRUCTURE NO. 006-0140**

SHEET NO. S20 OF S26 SHEETS

F.A.P. RTE. 613	SECTION (8D-BR) BR	COUNTY BUREAU	TOTAL SHEETS 63	SHEET NO. 42
CONTRACT NO. 66A17			ILLINOIS FED. AID PROJECT	