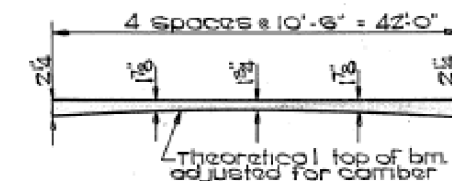
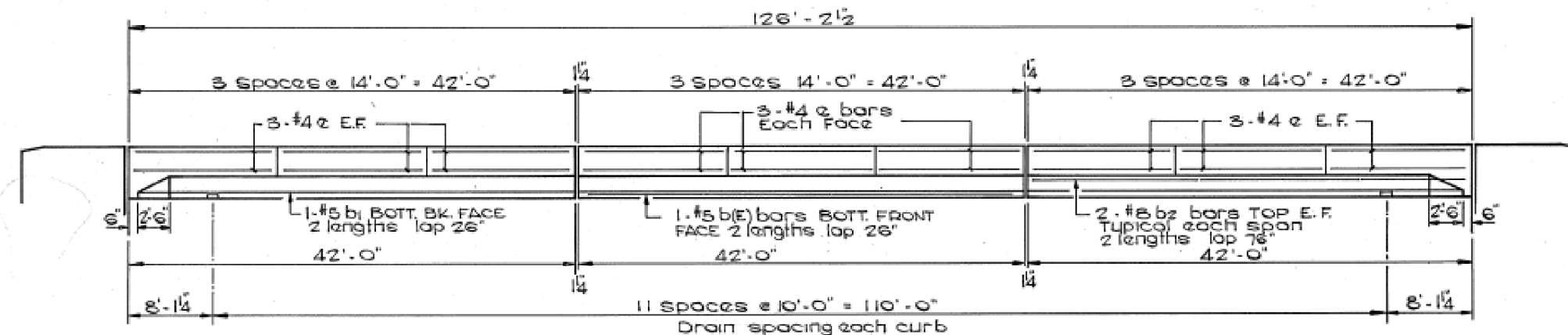


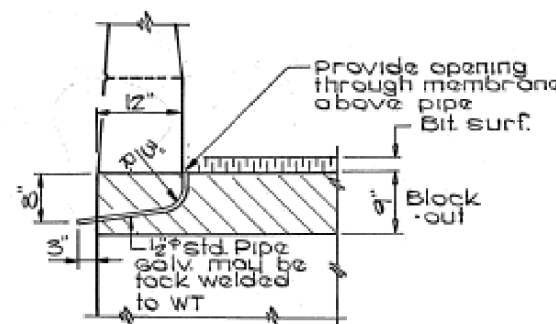
PROJECT NO.	SECTION	SHEET NO.	TOTAL SHEETS
4	8D BR BUREAU	9	6

\*FAS 2246



**VARIABLE THICKNESS BITUMINOUS**  
TYPICAL EACH SPAN  
Dimensions include 1/2\"/>

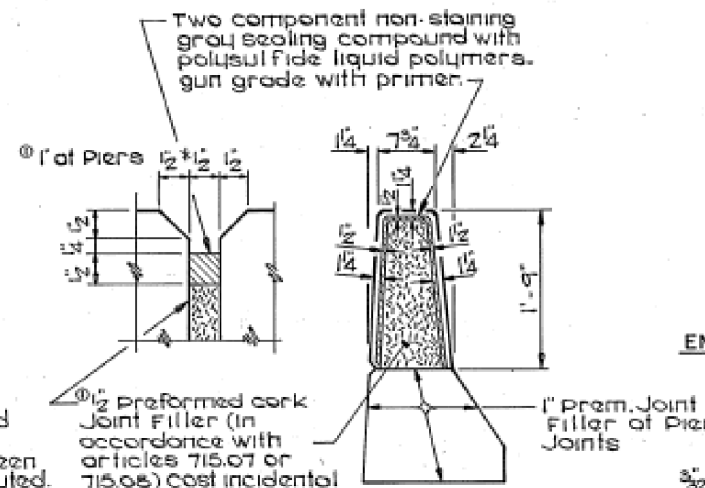
**INSIDE ELEVATION PARAPET-SHOWING JOINT & DRAIN SPACING**



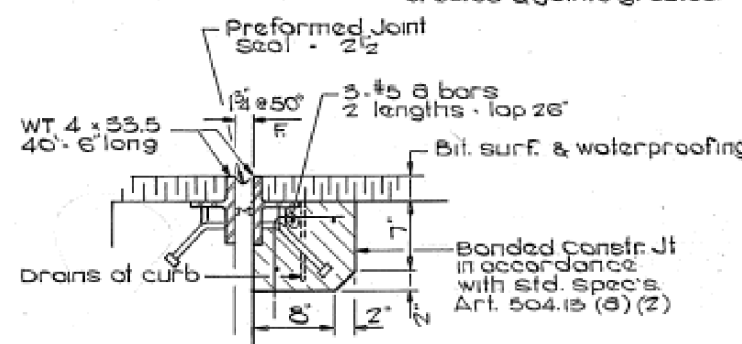
**DRAIN HOLES AT ABUTMENT**

Provide drain holes at low points of expansion ends. Typical 4 places.

**NOTE**  
Dimensions are at right angles. Hatched areas to be poured after beams have been erected & joints grouted.

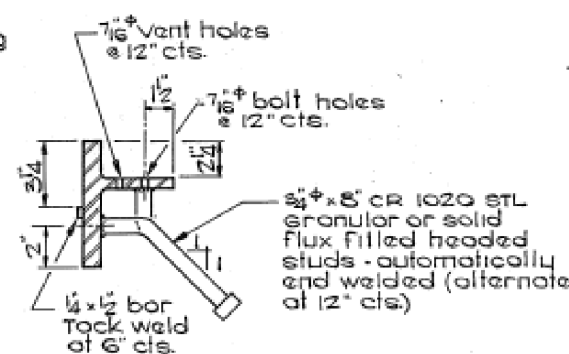


**DETAIL OF PARAPET JOINT**

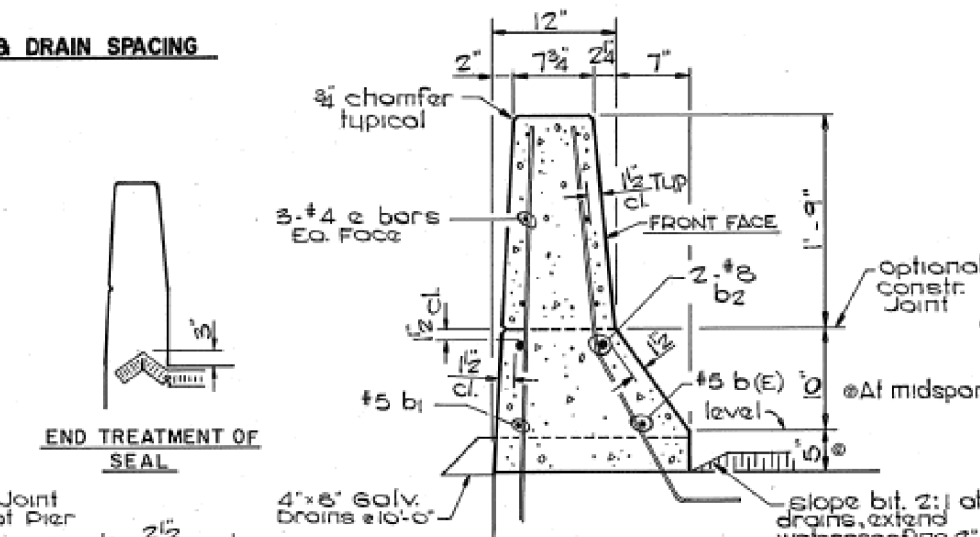


**DETAIL END OF BEAMS AT ABUTMENTS**

Ends of beams shall be aligned at ends of bridge. Any linear variation in beam lengths shall be placed at pier joints. Concrete in block-out shall be paid for as Class X concrete.

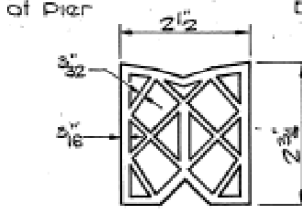


**DETAIL OF EXPANSION DAM**  
Fabricate to fit crown  
4 Required

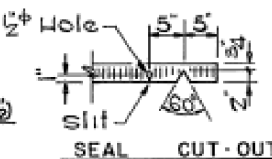


**CURB SECTION**

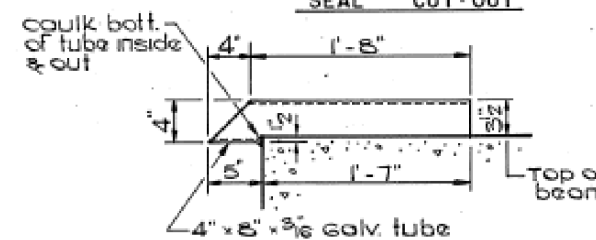
**END TREATMENT OF SEAL**



**PREFORMED JOINT SEAL (2 1/2\"/>**



**SEAL CUT-OUT**



**DRAIN DETAIL**  
Cost incidental

**BILL OF MATERIAL-PARAPETS**

BAR NO.	SIZE	LENGTH	SHAPE
3	12 #5	22'-4"	—
b(E)	12 #5	22'-0"	—
b1	12 #5	22'-0"	—
b2	24 #8	24'-0"	—
e	108 #4	13'-8"	—
Class X concrete cu.yds.			51.1
Reinforcement Bars Lbs.			3080
Reinforcement Bars (Epoxy coated) Lbs.			280
Structural steel Lbs.			5676
Bit. Conc. surface course, class I Tons			49
Waterproofing Membrane system sq.yds.			460
Portland Cement Mortar Facing course Lin. Ft.			1008
Protective Coat sq.yds.			121
Preformed Joint Seal - 2 1/2" Lin. Ft.			85

\*Includes 1.9 cu.yds. for box-out at end of deck

**PARAPET DETAILS**  
SECTION 8D - BR  
US RT 6 FAS RT 2246  
BUREAU COUNTY

FILE NAME =	USER NAME = carpenterdj	DESIGNED -	REVISED -
ct:\pk_work\p1dot\carpenterdj\d0183264\0366A17-sht-exbrbridge.dgn		DRAWN -	REVISED -
PLOT SCALE = 100.0000' / 1"		CHECKED -	REVISED -
PLOT DATE = 8/1/2014		DATE -	REVISED -

STATE OF ILLINOIS  
DEPARTMENT OF TRANSPORTATION

EXISTING BRIDGE PLANS  
FOR INFORMATION ONLY  
SCALE: \_\_\_\_\_ SHEET \_\_\_\_\_ OF \_\_\_\_\_ SHEETS STA. \_\_\_\_\_ TO STA. \_\_\_\_\_

F.A.P. RTE.	SECTION	COUNTY	TOTAL SHEETS	SHEET NO.
613	(8D BR)BUREAU	BUREAU	63	51
			CONTRACT NO. 66A17	
ILLINOIS FED. AID PROJECT				