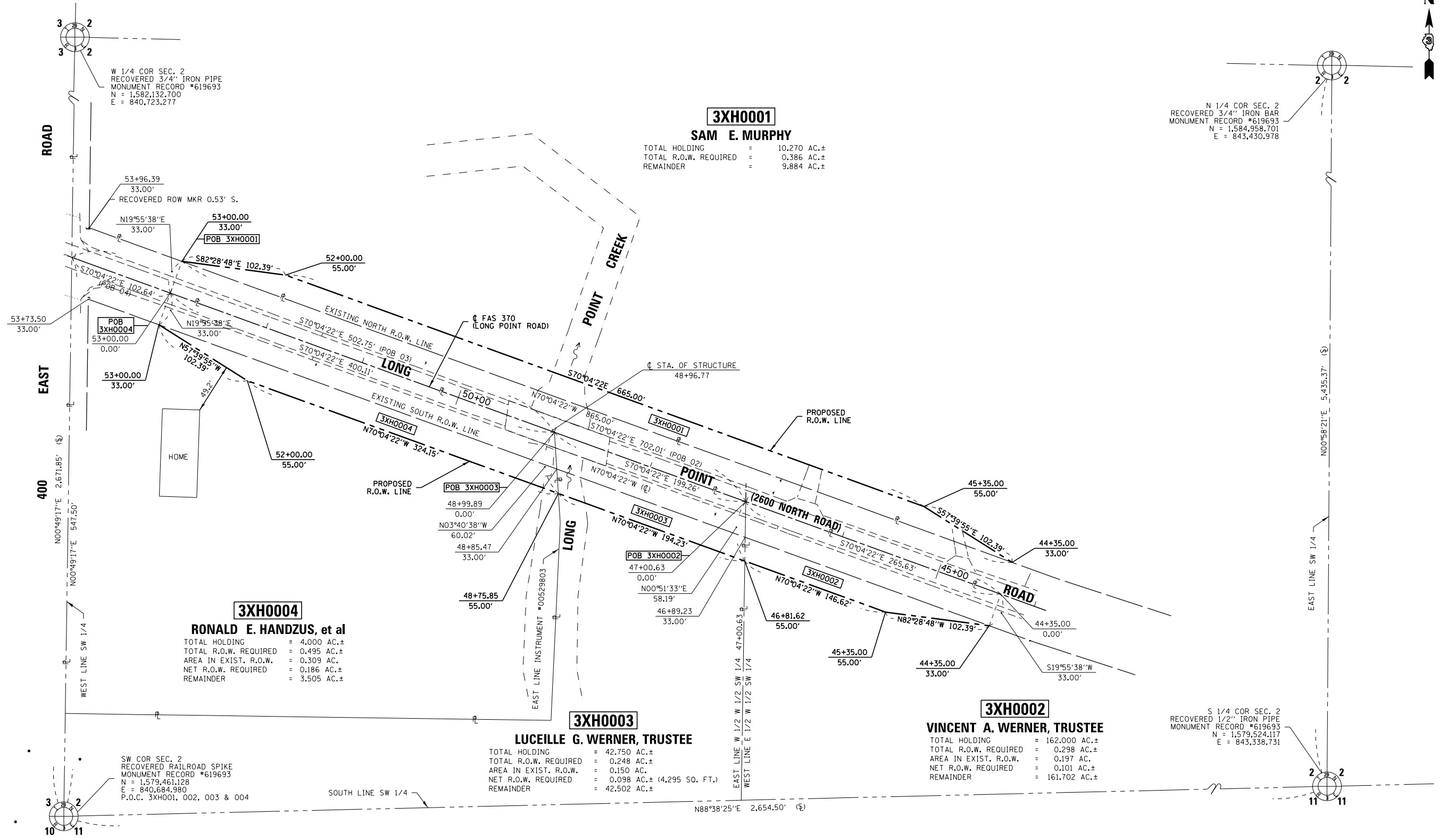


SW 1/4 OF SEC. 2, T.29N., R.3E. OF THE 3RD P.M.



3XH0001
SAM E. MURPHY
 TOTAL HOLDING = 10.270 AC.±
 TOTAL R.O.W. REQUIRED = 0.386 AC.±
 REMAINDER = 9.884 AC.±

3XH0004
RONALD E. HANDZUS, et al
 TOTAL HOLDING = 4.000 AC.±
 TOTAL R.O.W. REQUIRED = 0.495 AC.±
 AREA IN EXIST. R.O.W. = 0.309 AC.
 NET R.O.W. REQUIRED = 0.186 AC.±
 REMAINDER = 3.505 AC.±

3XH0003
LUCEILLE G. WERNER, TRUSTEE
 TOTAL HOLDING = 42.750 AC.±
 TOTAL R.O.W. REQUIRED = 0.248 AC.±
 AREA IN EXIST. R.O.W. = 0.150 AC.
 NET R.O.W. REQUIRED = 0.098 AC.± (4,295 SQ. FT.)
 REMAINDER = 42.502 AC.±

3XH0002
VINCENT A. WERNER, TRUSTEE
 TOTAL HOLDING = 162.000 AC.±
 TOTAL R.O.W. REQUIRED = 0.298 AC.±
 AREA IN EXIST. R.O.W. = 0.197 AC.
 NET R.O.W. REQUIRED = 0.101 AC.±
 REMAINDER = 161.702 AC.±

I DARRELL A. POUNDSTONE, HEREBY CERTIFY THAT I AM A PROFESSIONAL LAND SURVEYOR OF THE STATE OF ILLINOIS, THAT THE SURVEY OF PROPOSED FAS 370 (LONG POINT ROAD) WAS MADE BY RENWICK & ASSOCIATES, INC. UNDER MY DIRECTION, AND THAT THE SURVEY IS TRUE AND COMPLETE AS SHOWN TO THE BEST OF MY KNOWLEDGE AND BELIEF, THAT ALL MONUMENTS AND MARKS ARE OF THE CHARACTER AND OCCUPY THE POSITION SHOWN THEREON, AND ARE SUFFICIENT TO ENABLE THE SURVEY TO BE RETRACED. THIS PROFESSIONAL SERVICE CONFORMS TO THE CURRENT ILLINOIS MINIMUM STANDARDS FOR A BOUNDARY SURVEY.

DATE: _____ ILLINOIS PROFESSIONAL LAND SURVEYOR NO. 3485
 SURVEY BOOK NO. _____ 11-30-2012 EXPIRATION DATE

- NOTES:**
- ALL BEARINGS AND DISTANCES (GRID) ARE REFERENCED TO THE ILLINOIS STATE PLANE COORDINATE SYSTEM, EAST ZONE NAD 83 (2007 ADJ.).
 - GRID DISTANCE (AS LABELED) x 1.000026507 = GROUND DISTANCE



Renwick & Associates, Inc.
 Professional Engineers & Land Surveyors
 1304 Genl Circle, Suite 4 • Ottawa, IL 61350

NW 1/4 OF SEC. 11, T.29N., R.3E. OF THE 3RD P.M.

FILE NAME = D366A18-sht-rowplan01.dgn	USER NAME = MITCHELL	DESIGNED -	REVISED - JJC 1-14-14 NAME CHANGE
		DRAWN -	REVISED -
	PLOT SCALE = 1" = 50'	CHECKED -	REVISED -
	PLOT DATE = NOVEMBER 29, 2012	DATE -	REVISED -

STATE OF ILLINOIS
DEPARTMENT OF TRANSPORTATION

RIGHT OF WAY PLANS		F.A.S. RTE.	SECTION	COUNTY	TOTAL SHEETS	SHEET NO.
PROJECT	JOB NO. R-93-009-12	FAS 370	(102 BR) BR	LIVINGSTON	65	21
SCALE: 1"=50'	SHEET NO. 1 OF 1 SHEETS	STA. 44+35.00 TO 53+00.00		CONTRACT NO. 66A18		
FED. ROAD DIST. NO. - ILLINOIS FED. AID PROJECT						