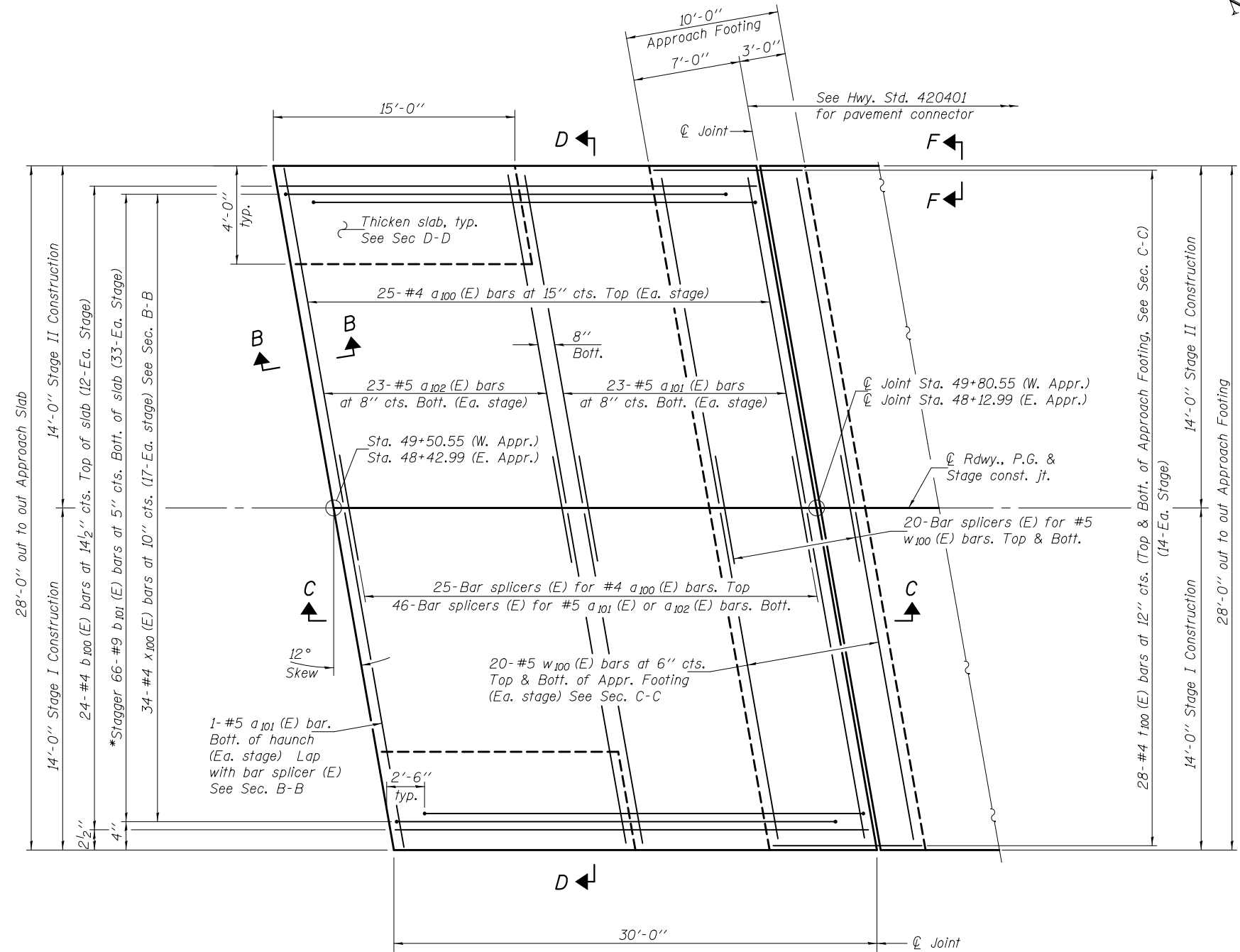


Notes:  
 The joint opening shall be determined per Article 520.04 except that on jointless structures, the distance described as the bridge length between the nearest fixed bearings each way from the joint shall be taken as half the bridge length plus the approach slab length. The minimum dimension shall be 1 1/2' for installation purposes. See sheet 11 of 18 for Sections C-C and D-D. a100 (E) thru a102 (E) bar spacings measured along  $\varnothing$  Rdwy.

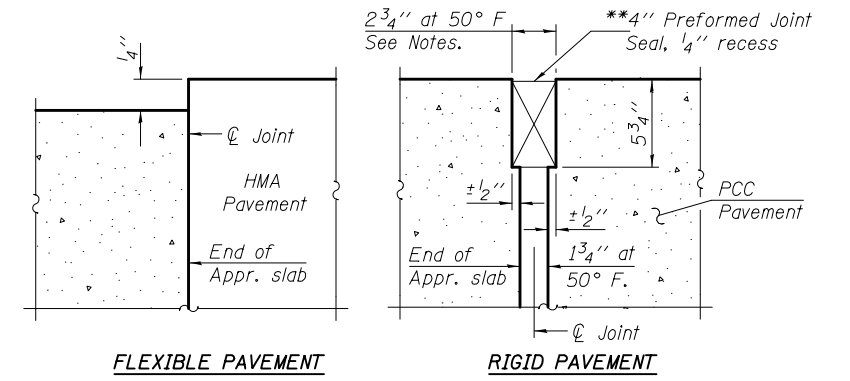
\*\* Cost included with Concrete Superstructure.



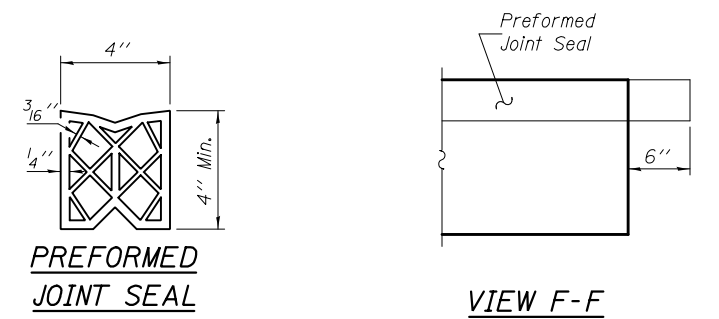
**PLAN**

(West approach shown - East approach similar by 180° rotation)

\*Tilt #9 b101 (E) bars as required to maintain clearance.

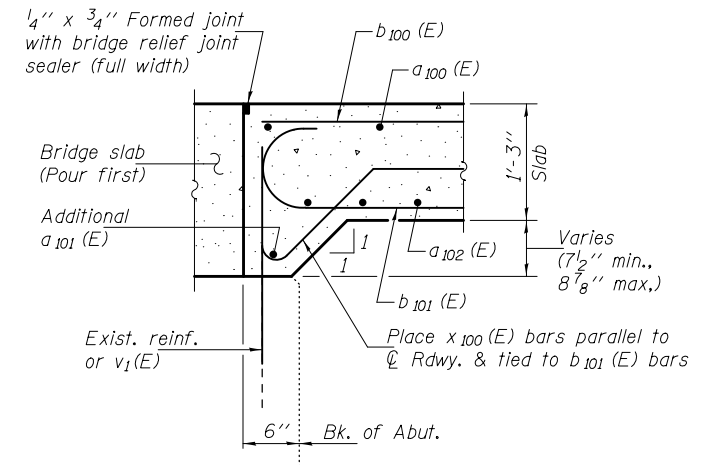


**DETAIL A**



**PREFORMED JOINT SEAL**

**VIEW F-F**



**SECTION B-B**

Horizontal dimensions are at right L's

DESIGNED - Paul S. Johnson	EXAMINED - <i>Joanne F. [Signature]</i>	DATE - OCTOBER 16, 2014
CHECKED - Zachary T. Bulva	PASSED - <i>Carl [Signature]</i>	REVISED
DRAWN - h.t. duong	ACTING ENGINEER OF BRIDGES AND STRUCTURES	REVISED
CHECKED - PSJ/ZTB		

**STATE OF ILLINOIS  
 DEPARTMENT OF TRANSPORTATION**

**BRIDGE APPROACH SLAB DETAILS  
 STRUCTURE NO. 053-0157**

SHEET NO. 10 OF 18 SHEETS

F.A.S. RTE.	SECTION	COUNTY	TOTAL SHEETS	SHEET NO.
370	(102BR)BR	LIVINGSTON	65	31
CONTRACT NO. 66A18			ILLINOIS FED. AID PROJECT	