

DATE	BY	CHKD	APPD	SHEET NO.
11/28/14	JTS	JK		4
PROJECT NO.				SHEETS
102BR				5

STATE OF ILLINOIS
DEPARTMENT OF TRANSPORTATION

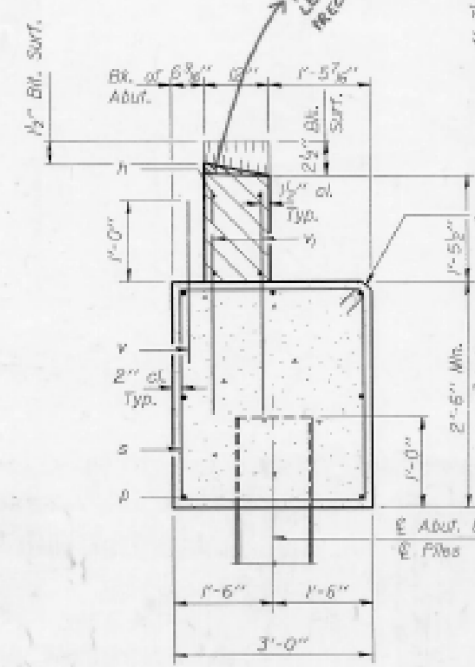
FOR INFORMATION ONLY

Notes: All edges shall have standard 1/4" chamfers except as noted.
Hatched area to be poured after beams are in place. Class X Concrete quantity included with superstructure on sheet #2.
Space reinforcement in cap to miss dowel bars.

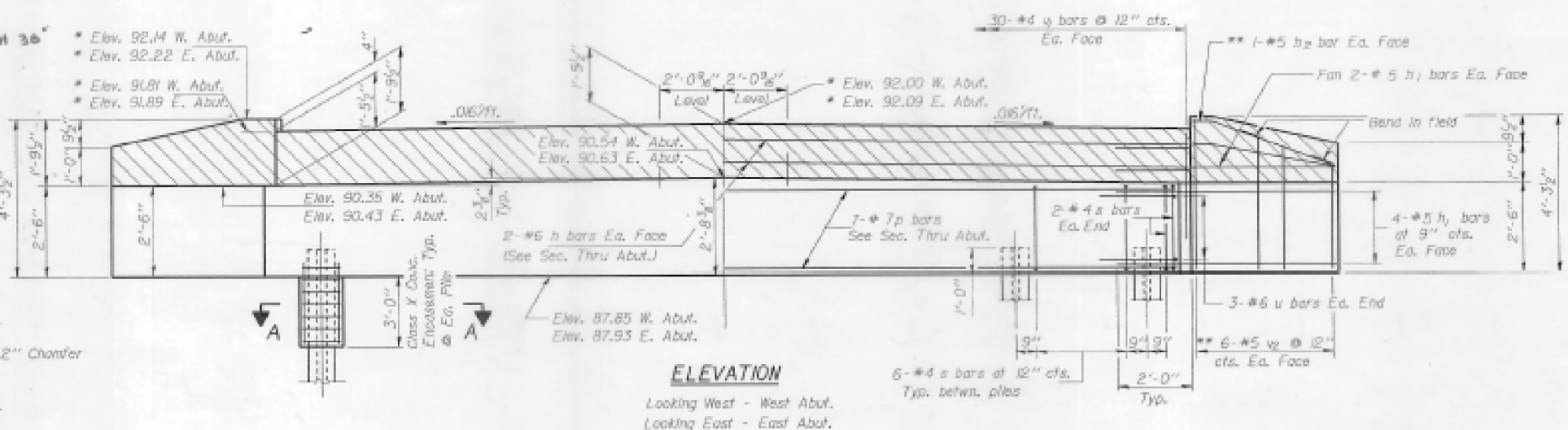
PILE DATA

Typical Steel HP10x42
Capacity: Driven to Refusal
Est. Length: 37'-0" W. Abut.
37'-0" E. Abut.
No. Required: 4 Piles + 1 Test Pile E. Abut.
4 Piles W. Abut.

ORDERED LENGTH 36'

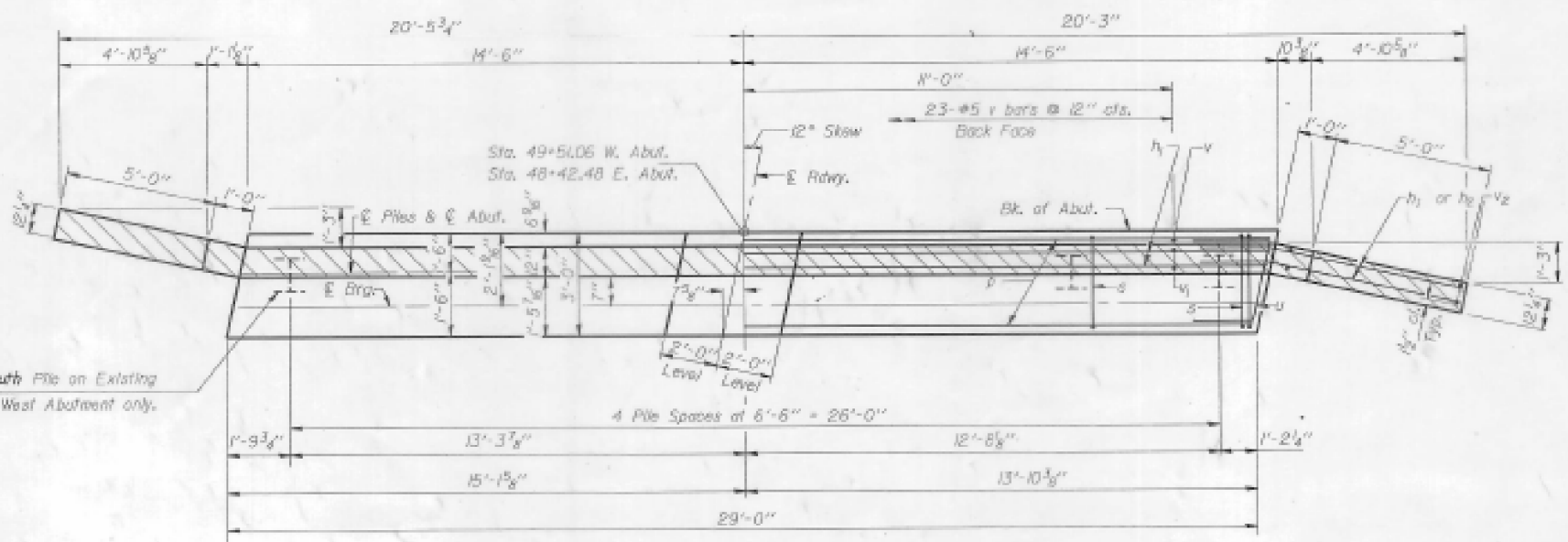


SEC. THRU ABUT.

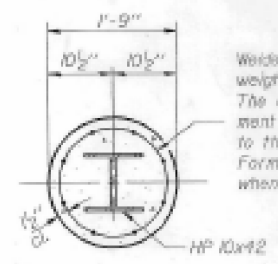


ELEVATION

Looking West - West Abut.
Looking East - East Abut.

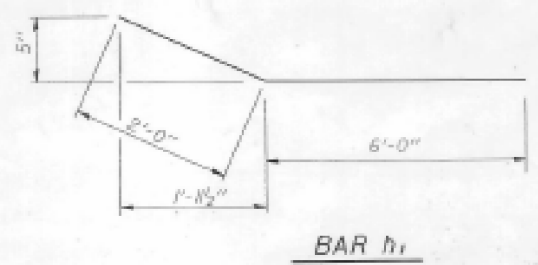


PLAN

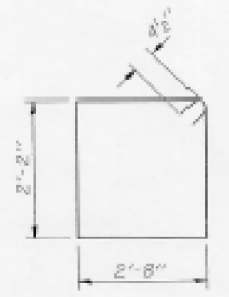


SECTION A-A

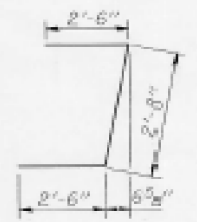
Welded wire fabric 6 x 5-W4.0 x W4.0 weighing 58#/100 sq. ft. The cost of Class X Concrete Encasement and Reinforcement is incidental to the cost of furnishing piles. Forms for encasement may be omitted when soil conditions will permit.



BAR h1



BAR s



BAR u

TWO ABUTMENTS
BILL OF MATERIAL

Bar	No.	Size	Length	Shape
h	8	#6	28'-9"	
h1	48	#5	8'-0"	
h2	8	#5	5'-9"	
p	14	#7	28'-9"	
s	56	#4	12'-5"	□
u	12	#6	7'-8"	J
v	46	#5	2'-9"	
w	120	#4	3'-3"	
x	48	#5	4'-0"	
Class X Concrete			Cu.Yds.	19.0
Reinforcement Bars			Lbs.	2740
Steel Piles (HP10x42)			Ltn. Ft.	296
Test Piles 5T1 (10x42)			Each	1
Exp. 5T1 Piles (HP10x42)			Ltn. Ft.	16

*** Note: Steel HP10x42 pile estimated length = 16'-0" shall be set on top of existing footing thru hole prepared in existing back TM and, after setting the pile, the hole shall be filled with sand. Cost incidental to "Furnishing Steel Piles (HP10x42)".

*** Set South Pile on Existing Footing of West Abutment only.

DESIGNED: [Signature]
CHECKED: [Signature]
DRAWN: RON SOMMER
CHECKED: TJD DRM

Dec. 5 2014
EXAMINED: [Signature]
PASSED: [Signature]
APPROVED: [Signature]

EAST AND WEST ABUTMENTS
F.A.S. RTE. 370 SEC. 102BR
LIVINGSTON COUNTY
STA. 48+96.77