

**INDEX OF SHEETS**

1	COVER SHEET
2	GENERAL NOTES
3-6	SUMMARY OF QUANTITIES
7	TYPICAL SECTIONS
8	SCHEDULES
9	REMOVAL PLAN
10	PLAN & PROFILE
11-13	DETOUR PLAN
14-24	BRIDGE PLANS
25-30	EXISTING BRIDGE PLANS
31	DETAILS
32-35	CROSS SECTIONS

**STATE OF ILLINOIS**  
**DEPARTMENT OF TRANSPORTATION**  
**DIVISION OF HIGHWAYS**  
**PROPOSED**  
**HIGHWAY PLANS**

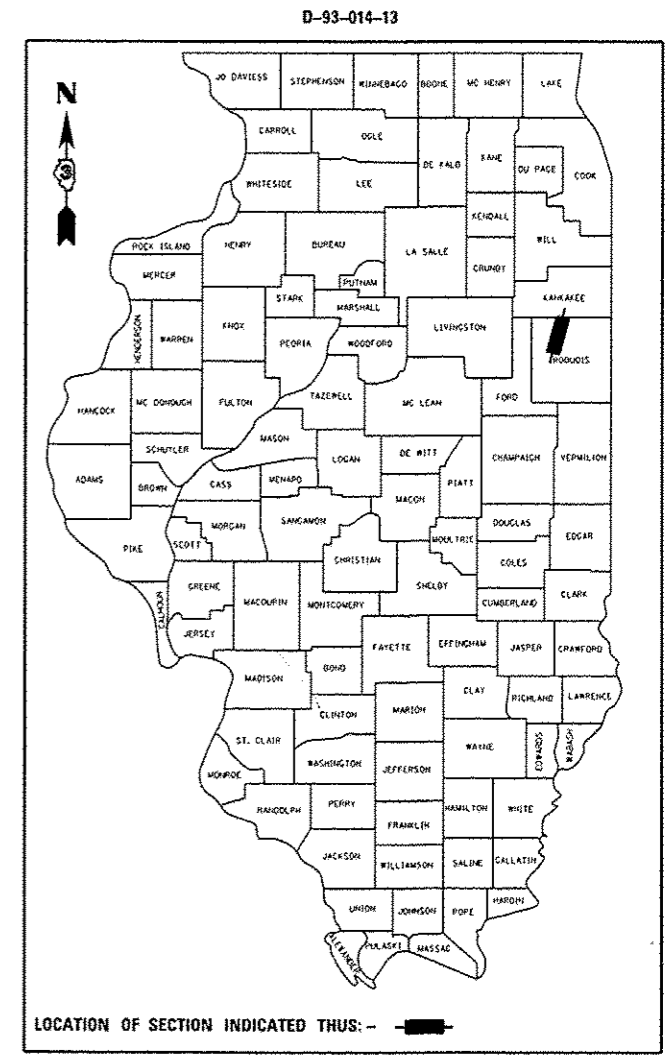
F.A.S. RTE.	SECTION	COUNTY	TOTAL SHEETS	SHEET NO.
1324	38 BR	IROQUOIS	35	1
		ILLINOIS	CONTRACT NO. 66A72	

**LIST OF ILLINOIS DOT HIGHWAY STANDARDS**

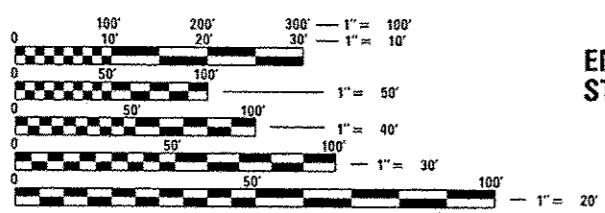
BLR 21-9	TYPICAL APPLICATIONS OF TRAFFIC CONTROL DEVICES FOR CONSTRUCTION ON RURAL LOCAL HIGHWAYS
BLR 22-7	TYPICAL APP OF T.C.D. RURAL LOCAL HIGHWAY (2-LANE 2-WAY RURAL TRAF.) (ROAD CLOSED TO THRU TRAFFIC)
000001-06	STANDARD SYMBOLS, ABBREVIATIONS AND PATTERNS
001001-02	AREAS OF REINFORCEMENT BARS
001006	DECIMAL OF AN INCH AND OF A FOOT
280001-07	TEMPORARY EROSION CONTROL SYSTEMS
420401-10	BRIDGE APPROACH PAVEMENT CONNECTOR
515001-03	NAME PLATE FOR BRIDGES
601101-01	CONCRETE HEADWALL FOR PIPE DRAIN
630001-10	STEEL PLATE BEAM GUARDRAIL
631032-08	TRAFFIC BARRIER TERMINAL, TYPE 6A
635006-03	REFLECTOR AND TERMINAL MARKER PLACEMENT
635011-02	REFLECTOR MARKER AND MOUNTING DETAILS
701001-02	OFF-ROAD OPERATIONS 2L, 2W, MORE THAN 15' (4.5 m) AWAY
701006-05	OFF-ROAD OPERATIONS 2L, 2W, 15' (4.5 m) TO 24" (600 mm) FROM PAVEMENT EDGE
701306-03	LANE CLOSURE, 2L, 2W, SLOW MOVING OPERATIONS DAY ONLY, FOR SPEEDS ≥ 45 MPH
701311-03	LANE CLOSURE, 2L, 2W, MOVING OPERATIONS - DAY ONLY
701901-03	TRAFFIC CONTROL DEVICES
780001-04	TYPICAL PAVEMENT MARKINGS
781001-03	TYPICAL APPLICATIONS RAISED REFLECTIVE PAVEMENT MARKERS

**FAS ROUTE 1324 (OR 45) (US 45)**  
**SECTION 38 BR**  
**PROJECT: ACRS-1324(104)**  
**SUPERSTRUCTURE REPLACEMENT**  
**IROQUOIS COUNTY**

C-93-013-13



**MAJOR COLLECTOR**  
**2013 ADT = 2400**  
**P.V. = 96.7%**  
**S.U. = 2.5%**  
**M.U. = 0.8%**



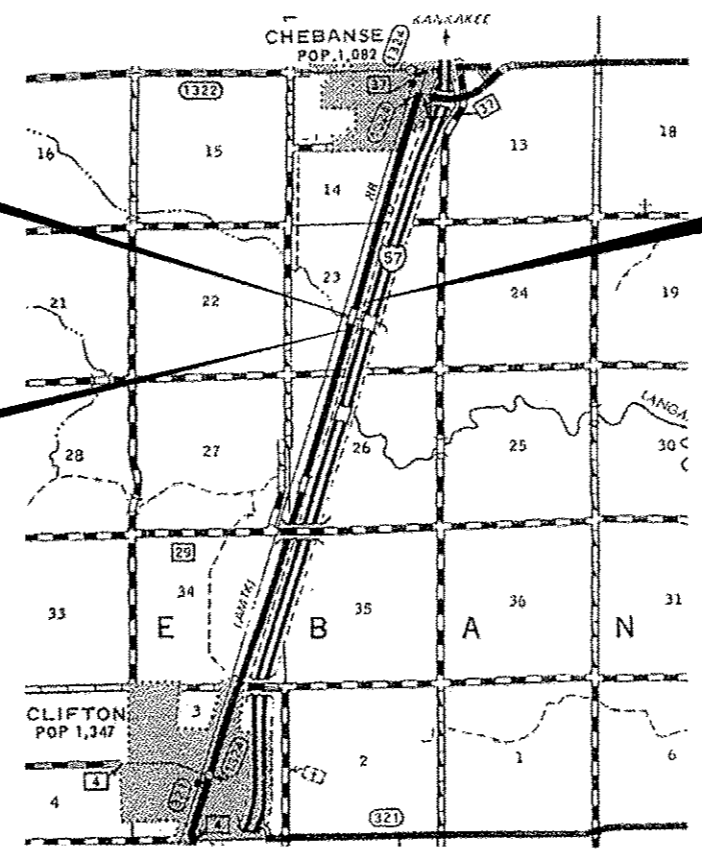
FULL SIZE PLANS HAVE BEEN PREPARED USING STANDARD ENGINEERING SCALES. REDUCED SIZED PLANS WILL NOT CONFORM TO STANDARD SCALES. IN MAKING MEASUREMENTS ON REDUCED PLANS, THE ABOVE SCALES MAY BE USED.

J.U.I.E.  
 JOINT UTILITY LOCATION INFORMATION FOR EXCAVATION  
 1-800-892-0123  
 OR 811

**STA 500 + 55.00**  
**SN 038-0184**  
**SUPERSTRUCTURE REMOVAL**  
**AND REPLACEMENT**

**END IMPROVEMENT**  
**STA 502 + 00**

**BEGIN IMPROVEMENT**  
**STA 499 + 00.00**



GROSS LENGTH = 300.00 FT. = 0.057 MILE  
 NET LENGTH = 300.00 FT. = 0.057 MILE

**PROJECT ENGINEER: JOE KANNEL, PE**  
**UNIT CHIEF: MICHELE LINDEMAN, PE**

**CONTRACT NO. 66A72**

STATE OF ILLINOIS  
 DEPARTMENT OF TRANSPORTATION  
 DIVISION OF HIGHWAYS

SUBMITTED Aug. 14 2014  
Paul Coete  
 DEPUTY DIRECTOR OF HIGHWAYS, REGION ENGINEER

Oct 17 2014  
John D. Baramzelli P.E.  
 ENGINEER OF DESIGN AND ENVIRONMENT

Oct 17 2014  
Omer Osman P.E.  
 DIRECTOR OF HIGHWAYS, CHIEF ENGINEER

**PRINTED BY THE AUTHORITY**  
**OF THE STATE OF ILLINOIS**