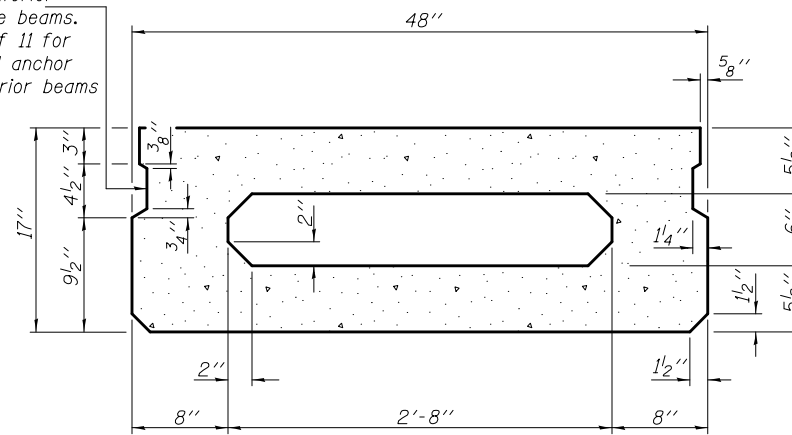
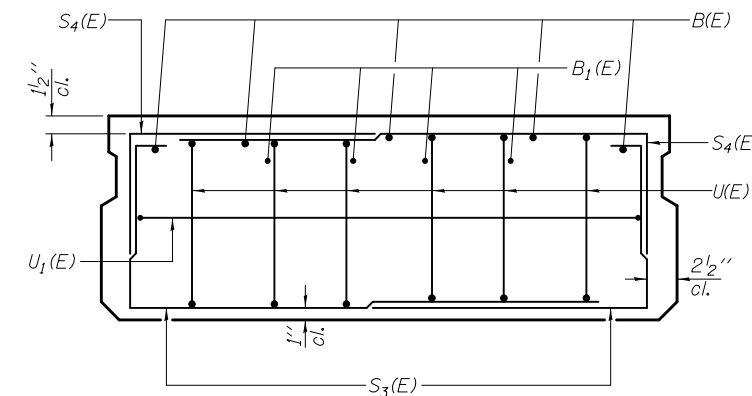


SECTION A-A

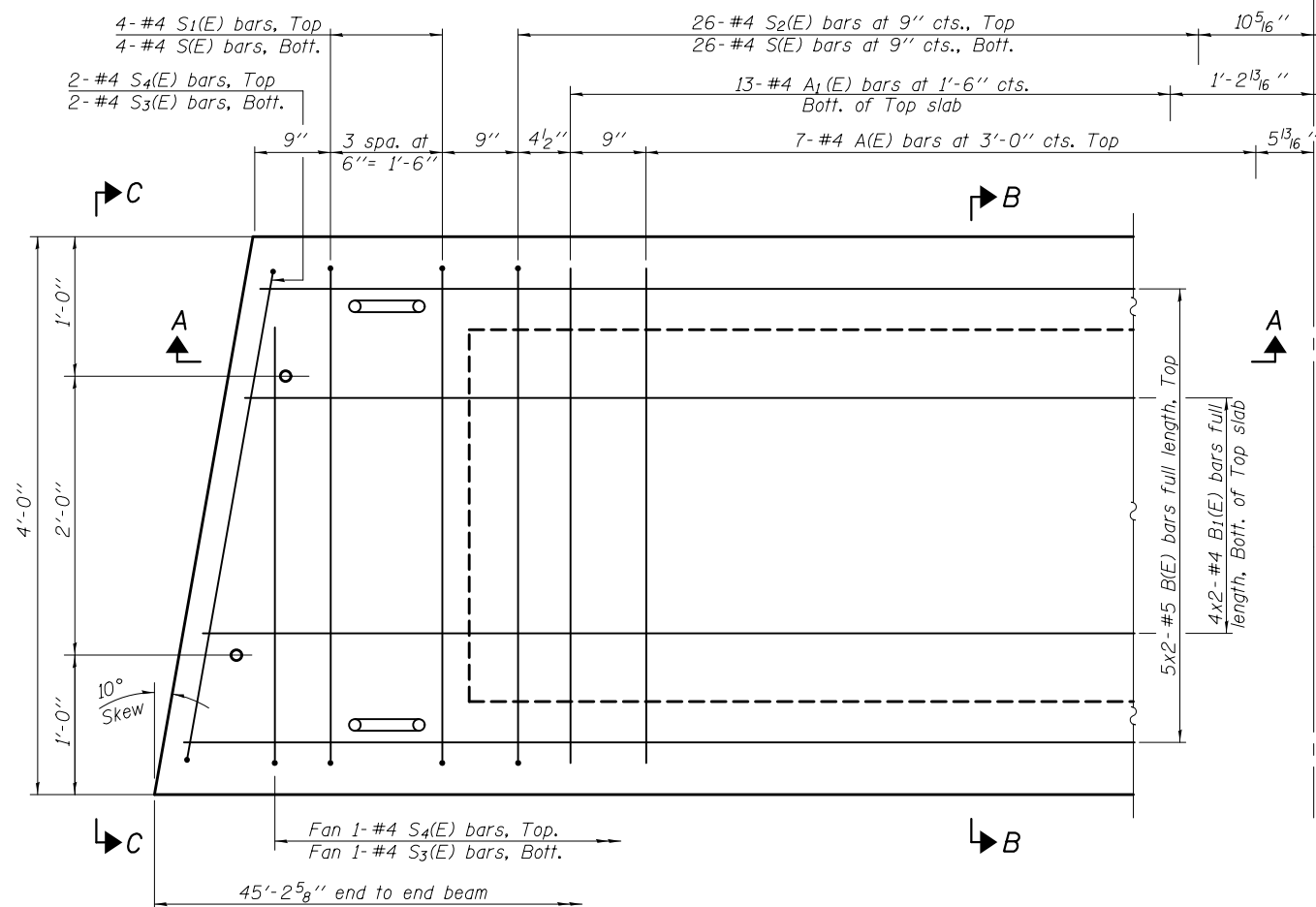
Omit key on exterior face of outside beams. See sheet 4 of 11 for location of rail anchor device on exterior beams



SECTION B-B
(Showing dimensions)



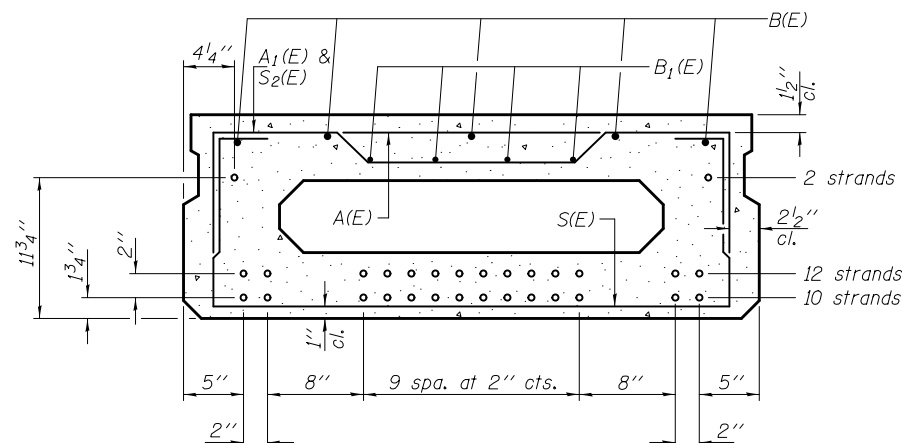
VIEW C-C



PLAN VIEW

Note: Spacing of S(E) and S2(E) bars may be adjusted up to 4" in the immediate area of the transverse tie diaphragms to miss the block outs for the transverse ties.

Similar about ϕ
1-#4 S2(E) bar at ϕ Top.
1-#4 S(E) bar at ϕ Bott.
1-#4 A1(E) bar at ϕ Bott. of Top slab



SECTION B-B

(Showing reinforcement and permissible strand locations)

Note: Place the number of strands specified in each row symmetrically about the centerline of beam in the permissible strand locations shown.

BAR LIST
ONE BEAM ONLY
(For information only)

Bar	No.	Size	Length	Shape
A(E)	14	#4	3'-7"	—
A1(E)	27	#4	3'-10"	—
B(E)	10	#5	23'-9"	—
B1(E)	8	#4	23'-6"	—
D(E)	14	#4	2'-9"	┌
S(E)	61	#4	6'-9"	┌
S1(E)	8	#4	5'-3"	┌
S2(E)	53	#4	5'-6"	┌
S3(E)	6	#4	4'-5"	┌
S4(E)	6	#4	3'-8"	┌
U(E)	12	#5	3'-8"	┌
U1(E)	2	#4	6'-8"	┌

MINIMUM BAR LAP

#4 bar = 2'-0"
#5 bar = 2'-6"

Note: See sheet 9 of 11 for additional details and Bill of Material. See sheet 4 of 11 for detail of D(E) bars.

* D(E) bars located on exterior face of outside beams only. See sheet 4 of 11.

DESIGNED - Fess Teklehaimanot
CHECKED - Ray Ahanchi
DRAWN - h.t. duong
CHECKED - FT/GRA

EXAMINED
PASSED
ACTING ENGINEER OF BRIDGE DESIGN
ACTING ENGINEER OF BRIDGES AND STRUCTURES

DATE - SEPTEMBER 3, 2014
REVISED —
REVISED —

STATE OF ILLINOIS
DEPARTMENT OF TRANSPORTATION

17" x 48" PPC DECK BEAM
STRUCTURE NO. 038-0184

SHEET NO. 8 OF 11 SHEETS

F.A.S. RTE.	SECTION	COUNTY	TOTAL SHEETS	SHEET NO.
1324	38BR	IROQUOIS	35	21
				CONTRACT NO. 66A72
ILLINOIS FED. AID PROJECT				