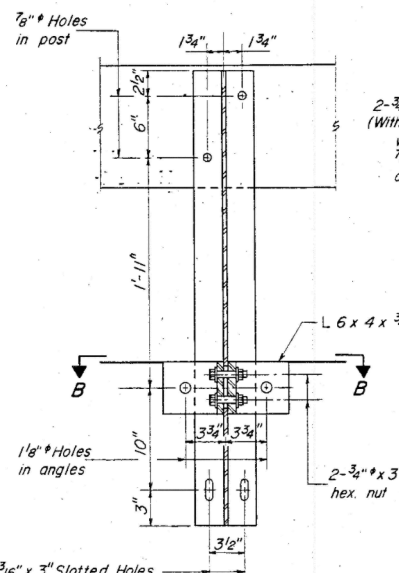
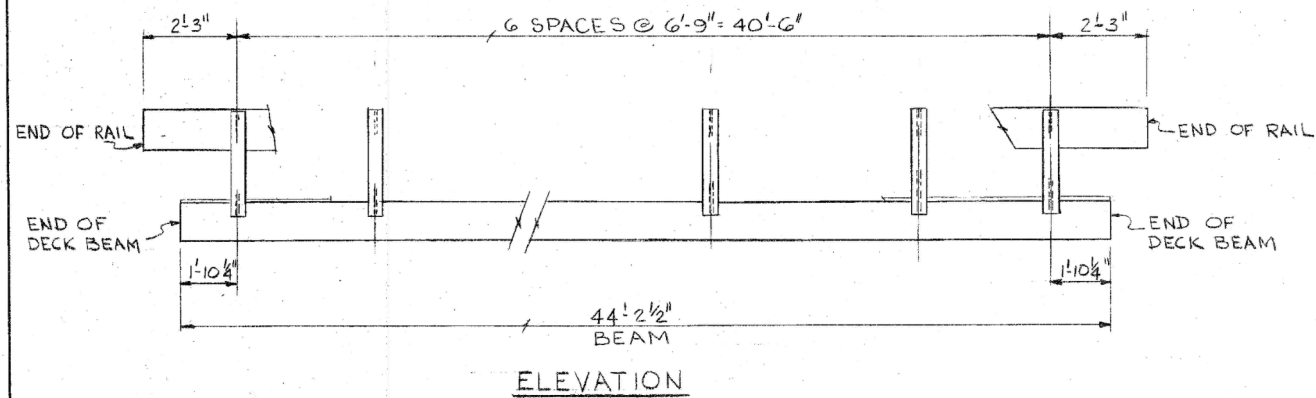


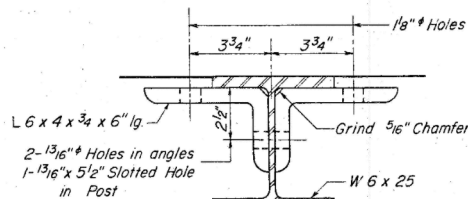
STATE OF ILLINOIS  
DEPARTMENT OF TRANSPORTATION

|                         |         |          |              |           |
|-------------------------|---------|----------|--------------|-----------|
| ROUTE NO.               | SECTION | COUNTY   | TOTAL SHEETS | SHEET NO. |
| 25                      | 38BR    | IROQUOIS | 22           | 9         |
| SHEET NO. 3<br>4 SHEETS |         |          |              |           |



2-3/4" x 6" Round Head Bolts  
(With slot or approved recess in head)  
with locknut & flat washer  
7/8" holes in tubing may be drilled in the field.

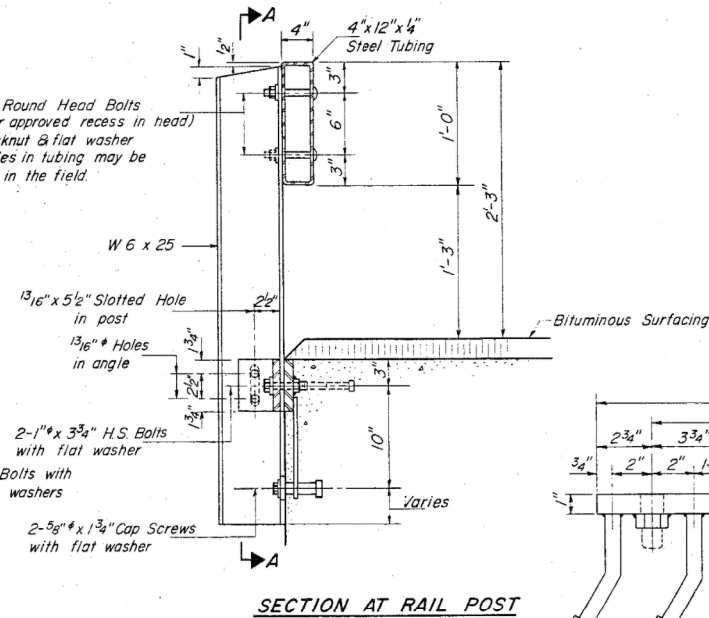
**SECTION A-A**



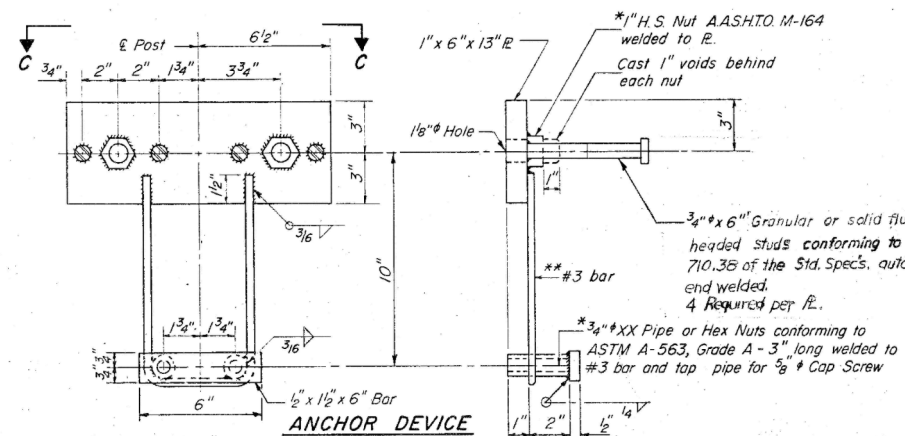
**SECTION B-B**

|          |             |
|----------|-------------|
| DESIGNED | D. J.       |
| CHECKED  | P. W.       |
| DRAWN    | P. WARONSKY |
| CHECKED  | AJM         |

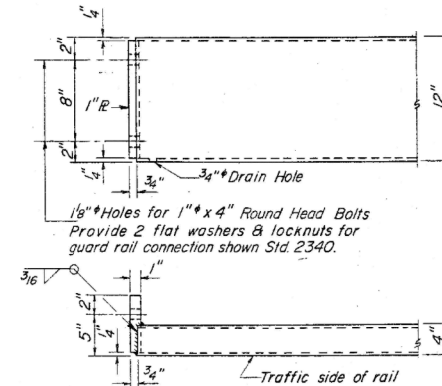
R-23A 12-31-84 (10'-9" Maximum Post Spacing)



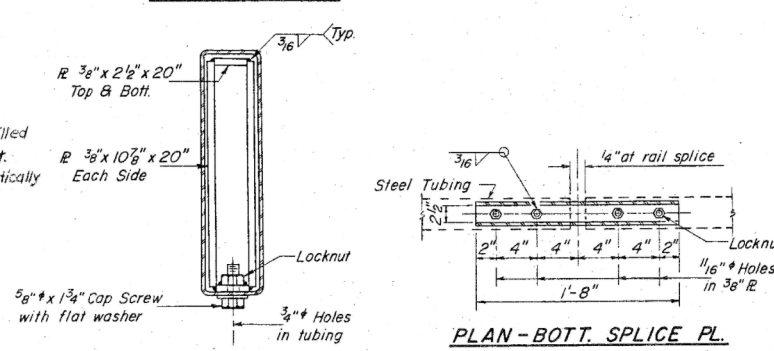
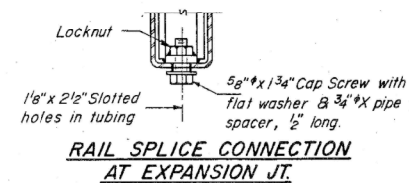
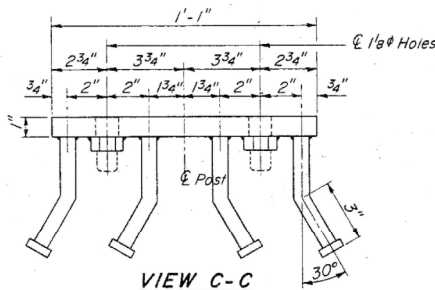
\*\* Whenever the lower insert assemblies interfere with strand locations, the #3 bars shall be cut and adjusted in order to allow raising or lowering of the lower inserts. Maximum adjustment not to exceed 1/2".



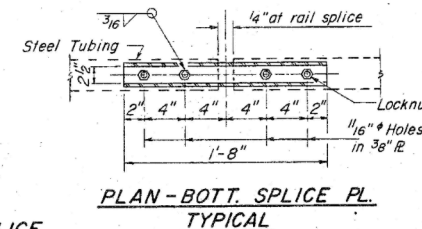
\* Threaded areas shall be plugged or blocked off during casting of beam.



**END OF RAIL DETAILS**



**SECTION AT RAIL SPLICE**



**NOTES**

Hollow structural steel tubing shall conform to the requirements of A.S.T.M. designation A-500 Grade B Structural Steel Tubing.  
All other steel shapes and pieces shall conform to the requirements of A.A.S.H.T.O. M-183 except posts and angles shall conform to A.A.S.H.T.O. M-223, Grade 50.  
Bolts, cap screws, and nuts shall conform to the requirement of A.S.T.M. designation A-307 except for high strength bolts, nuts and washers noted which shall conform to A.A.S.H.T.O. M-164.  
All bolts, nuts, cap screws, washers and lock washers shall be galvanized in accordance with A.A.S.H.T.O. M-232.  
All posts, railing, rail splices, anchor devices and angles shall be galvanized after shop fabrication in accordance with A.A.S.H.T.O. M-111 and A.S.T.M. A-385. Galvanized rail shall not be painted.  
Railing shall be in accordance with Section 508 of the Standard Specifications, except as noted, and shall be paid for at the contract unit price per lineal foot for STEEL RAILING, TYPE S-1.  
All field drilled holes shall be coated with an approved zinc rich paint before erection.  
The lower portion of the post flange in contact with concrete shall receive two coats of asphalt paint conforming to Section 714.08 Type B or place 1/2" fabric bearing pad between the post and concrete.  
The 3/4" high strength bolts used to connect the 6 x 4 x 3/4 angles to the post shall be tightened in accordance with Article 507.04(g)(3) of the Standard Specifications. The 1" high strength bolts connecting the angles to the concrete shall be tightened to a snug fit and given an additional 1/8 turn. The 5/8" cap screws in bottom of posts shall be tightened to a snug fit only.

**BILL OF MATERIAL**

| Item                    | Unit     | Quantity |
|-------------------------|----------|----------|
| Steel Railing, Type S-1 | Lin. Ft. | 90       |

**TYPE S-1  
STEEL RAILING**

SBI ROUTE 25 SECTION 38 BR  
IROQUOIS COUNTY  
STATION 500+53

2-25-86

|   |                         |            |           |
|---|-------------------------|------------|-----------|
| FILE NAME =   | USER NAME = carpenterdj | DESIGNED - | REVISED - |
| ei:\pw\work\pmdot\carpenterdj\d0241716\366A72-sht-details.DGN |                         | DRAWN -    | REVISED - |
|   |                         | CHECKED -  | REVISED - |
|   |                         | DATE -     | REVISED - |

STATE OF ILLINOIS  
DEPARTMENT OF TRANSPORTATION

FOR INFORMATION ONLY  
EXISTING BRIDGE PLANS

SCALE: SHEET OF SHEETS STA. TO STA.

|                           |         |          |              |           |
|---------------------------|---------|----------|--------------|-----------|
| F.A.S. RTE.               | SECTION | COUNTY   | TOTAL SHEETS | SHEET NO. |
| 1324                      | 38 BR   | IROQUOIS | 35           | 27        |
| CONTRACT NO. 66A72        |         |          |              |           |
| ILLINOIS FED. AID PROJECT |         |          |              |           |