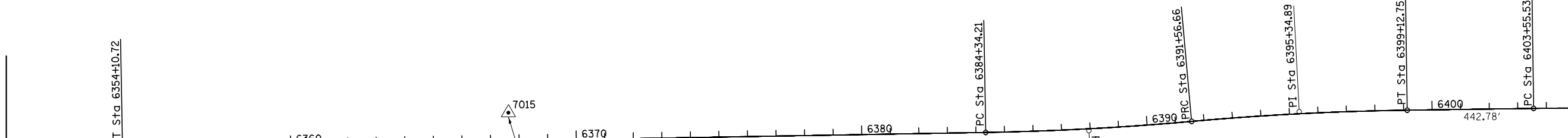


MATCH LINE STA. 6350+00
SEE PREVIOUS SHEET

MATCH LINE STA. 6405+00
SEE BELOW



CURVE IL47P12.10
PI STA. = 6387+95.59
Δ = 4° 08' 22" (LT)
D = 0° 34' 23"
R = 10,000.00'
T = 361.38'
L = 722.45'
E = 6.53'
e = N.C.
T.R. = N/A
S.E. RUN = N/A
P.C. STA. = 6384+34.21
P.T. STA. = 6391+56.66

CURVE IL47P12.11
PI STA. = 6395+34.89
Δ = 4° 19' 55" (RT)
D = 0° 34' 23"
R = 10,000.00'
T = 378.23'
L = 756.09'
E = 7.15'
e = N.C.
T.R. = N/A
S.E. RUN = N/A
P.C. STA. = 6391+56.66
P.T. STA. = 6399+12.75

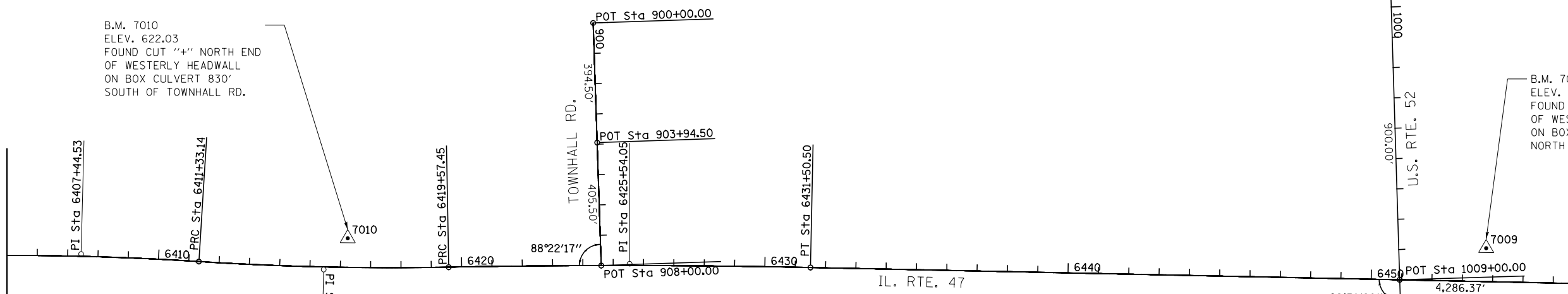
B.M. 7015
ELEV. 637.52
FOUND CUT "+" NORTHWEST
CORNER OF WESTERLY END
OF BOX CULVERT 2290'
NORTH OF JOLIET RD.

B.M. 7010
ELEV. 622.03
FOUND CUT "+" NORTH END
OF WESTERLY HEADWALL
ON BOX CULVERT 830'
SOUTH OF TOWNHALL RD.

B.M. 7009
ELEV. 624.56
FOUND CUT "+" NORTH END
OF WESTERLY HEADWALL
ON BOX CULVERT 290'
NORTH OF US ROUTE 52

MATCH LINE STA. 6405+00
SEE ABOVE

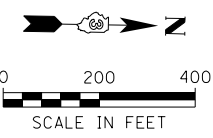
MATCH LINE STA. 6460+00
SEE NEXT SHEET



CURVE IL47P12.12
PI STA. = 6407+44.53
Δ = 4° 27' 19" (RT)
D = 0° 34' 23"
R = 10,000.00'
T = 389.00'
L = 777.61'
E = 7.56'
e = N.C.
T.R. = N/A
S.E. RUN = N/A
P.C. STA. = 6403+55.53
P.T. STA. = 6411+33.14

CURVE IL47P12.13
PI STA. = 6415+45.53
Δ = 4° 43' 23" (LT)
D = 0° 34' 23"
R = 10,000.00'
T = 412.39'
L = 824.31'
E = 8.50'
e = N.C.
T.R. = N/A
S.E. RUN = N/A
P.C. STA. = 6411+33.14
P.T. STA. = 6419+57.45

CURVE IL47P12.14
PI STA. = 6425+54.05
Δ = 2° 16' 20" (RT)
D = 0° 11' 26"
R = 30,084.09'
T = 596.60'
L = 1,193.05'
E = 5.92'
e = N.C.
T.R. = N/A
S.E. RUN = N/A
P.C. STA. = 6419+57.45
P.T. STA. = 6431+50.50



FILE NAME = V:\3195\66884 (North Section)\CADD Sheets\319566884-sh1-ATB-02.dgn	USER NAME = bdecreane	DESIGNED - KU	REVISED -	STATE OF ILLINOIS DEPARTMENT OF TRANSPORTATION	IL. RTE. 47 ALIGNMENT, TIES & BENCHMARKS		F.A.P. RTE. 326	SECTION 1109, 110R-1	COUNTY KENDALL	TOTAL SHEETS 619	SHEET NO. 70	
SHT.PLAN	PLOT SCALE = 400.0000' / in.	CHECKED - ST	REVISED -		SCALE: 1"=200'	SHEET NO. 2 OF 6 SHEETS	STA. 6350+00 TO STA. 6460+00	CONTRACT NO. 66884				
	PLOT DATE = 7/14/2014	DATE - 7/01/2014	REVISED -		ILLINOIS FED. AID PROJECT							