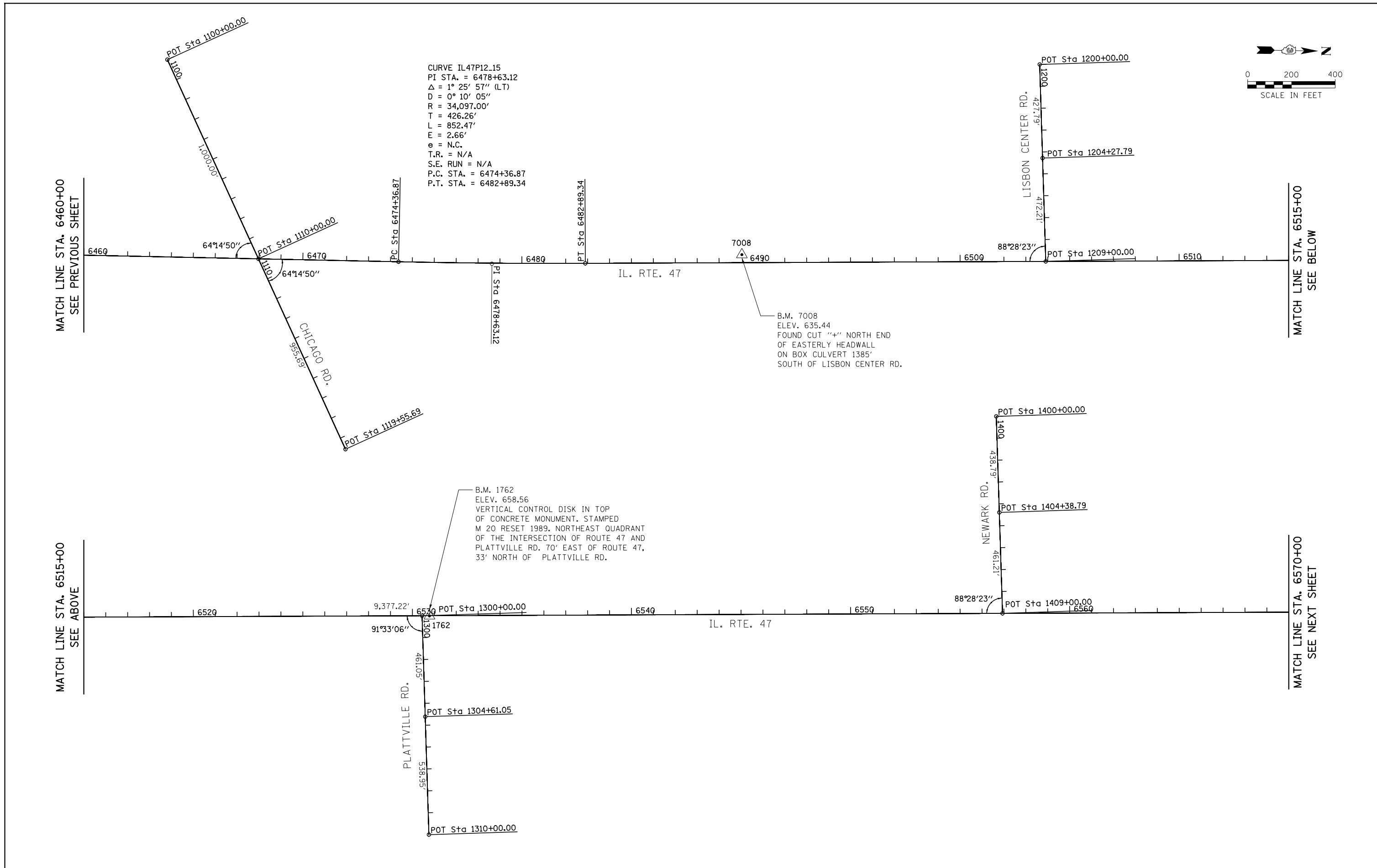


CURVE IL47P12_15
 PI STA. = 6478+63.12
 $\Delta = 1^\circ 25' 57''$ (LT)
 $D = 0^\circ 10' 05''$
 $R = 34,097.00'$
 $T = 426.26'$
 $L = 852.47'$
 $E = 2.66'$
 $e = \text{N.C.}$
 $T.R. = \text{N/A}$
 $S.E. \text{ RUN} = \text{N/A}$
 $P.C. \text{ STA.} = 6474+36.87$
 $P.T. \text{ STA.} = 6482+89.34$

B.M. 7008
 ELEV. 635.44
 FOUND CUT "+" NORTH END
 OF EASTERLY HEADWALL
 ON BOX CULVERT 1385'
 SOUTH OF LISBON CENTER RD.

B.M. 1762
 ELEV. 658.56
 VERTICAL CONTROL DISK IN TOP
 OF CONCRETE MONUMENT. STAMPED
 M 20 RESET 1989. NORTHEAST QUADRANT
 OF THE INTERSECTION OF ROUTE 47 AND
 PLATTVILLE RD. 70' EAST OF ROUTE 47,
 33' NORTH OF PLATTVILLE RD.



FILE NAME =	USER NAME = bdecreene	DESIGNED - KU	REVISED -
V:\3195\66884 (North Section)\CADD Sheets\ND366884-sh1-ATB-03.dgn		DRAWN - KU	REVISED -
	PLOT SCALE = 400.0000' / in.	CHECKED - ST	REVISED -
SHT.PLAN	PLOT DATE = 7/14/2014	DATE - 7/01/2014	REVISED -

**STATE OF ILLINOIS
 DEPARTMENT OF TRANSPORTATION**

**IL. RTE. 47
 ALIGNMENT, TIES & BENCHMARKS**

SCALE: 1"=200' SHEET NO. 3 OF 6 SHEETS STA. 6460+00 TO STA. 6570+00

F.A.P. RTE.	SECTION	COUNTY	TOTAL SHEETS	SHEET NO.
326	1109, 110R-1	KENDALL	619	71
CONTRACT NO. 66884				
ILLINOIS FED. AID PROJECT				