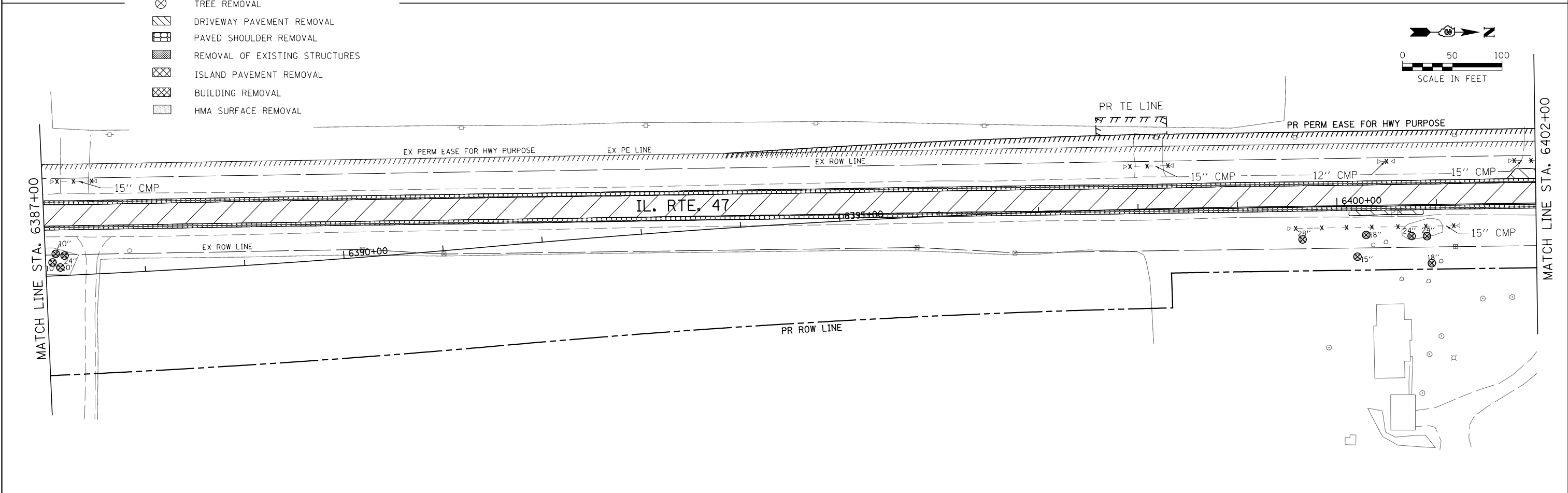


REMOVAL LEGEND

- PAVEMENT REMOVAL
- DRAINAGE STRUCTURE TO BE REMOVED
- COMB. CONC. CURB AND GUTTER REMOVAL
- PIPE CULVERT/STORM SEWER REMOVAL
- TREE REMOVAL
- DRIVEWAY PAVEMENT REMOVAL
- PAVED SHOULDER REMOVAL
- REMOVAL OF EXISTING STRUCTURES
- ISLAND PAVEMENT REMOVAL
- BUILDING REMOVAL
- HMA SURFACE REMOVAL



| | | | | | | | | | | | | |
|--|-------------------------------|------------------|-----------|---|--------------------------------------|--------------------------|------------------------------|--------------------|-----------------------|----------------|------------------|--------------|
| FILE NAME = V:\3195\66884 (North Section)\CADD Sheets\0366884-shr-rem-05.dgn | USER NAME = bdecreene | DESIGNED - KU | REVISED - | STATE OF ILLINOIS DEPARTMENT OF TRANSPORTATION | IL. RTE. 47 REMOVAL PLANS | | | F.A.P. RTE. 326 | SECTION (109, 110R-1) | COUNTY KENDALL | TOTAL SHEETS 619 | SHEET NO. 82 |
| *MODELNAME* | PLOT SCALE = 100.0000' / 1in. | CHECKED - ST | REVISED - | | SCALE: 1"=50' | SHEET NO. 5 OF 19 SHEETS | STA. 6372+00 TO STA. 6402+00 | CONTRACT NO. 66884 | | | | |
| | PLOT DATE = 7/14/2014 | DATE - 7/01/2014 | REVISED - | | ILLINOIS FED. AID PROJECT | | | | | | | |
| | | | | | | | | | | | | |