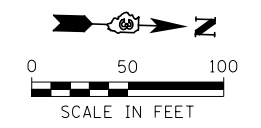
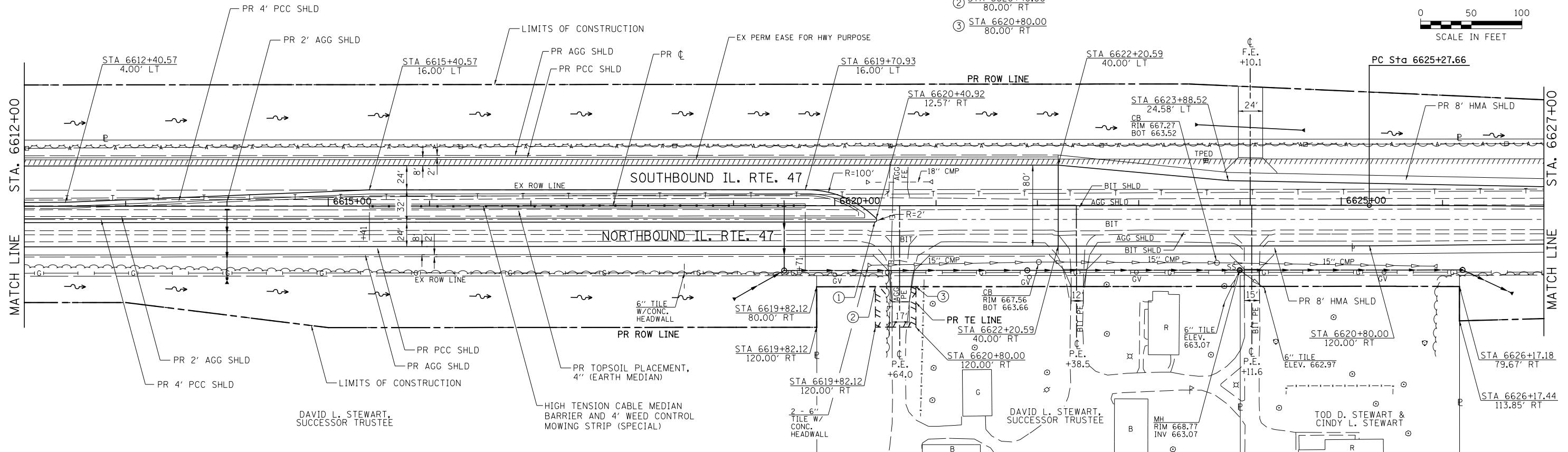


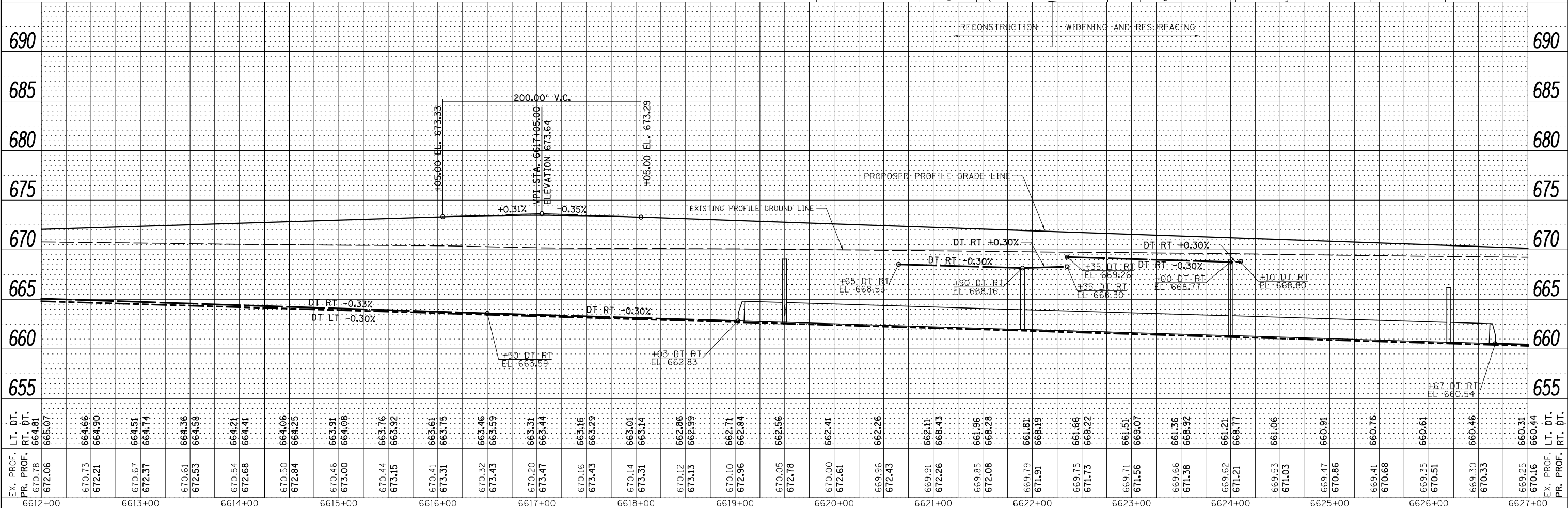
- ① STA 6620+39.52
16.00' RT
- ② STA 6620+40.00
80.00' RT
- ③ STA 6620+80.00
80.00' RT



PLAN	SURVEYED	DATE
NO.	PLOTTED	BY
	ALIGNED	
	CHECKED	
	FILED	



PROFILE	SURVEYED	DATE
NO.	PLOTTED	BY
	GRADES	
	CHECKED	
	STRUCTURE	
	NOTATIONS	



FILE NAME =	USER NAME = bdcraene	DESIGNED - HLC	REVISED -	STATE OF ILLINOIS DEPARTMENT OF TRANSPORTATION	IL. RTE. 47 PLAN & PROFILE	F.A.P. RTE.	SECTION	COUNTY	TOTAL SHEETS	SHEET NO.
V:\3195\66884 (North Section)\CADD Sheets\0366884-sht-plnprf-25.dgn		DRAWN - HLC	REVISED -			326	(109, 110R-1)	KENDALL	619	121
SHT_PLNPRF		CHECKED - CAS	REVISED -			CONTRACT NO. 66884				
		DATE - 7/01/2014	REVISED -			ILLINOIS FED. AID PROJECT				