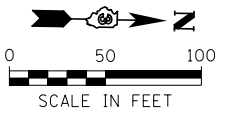
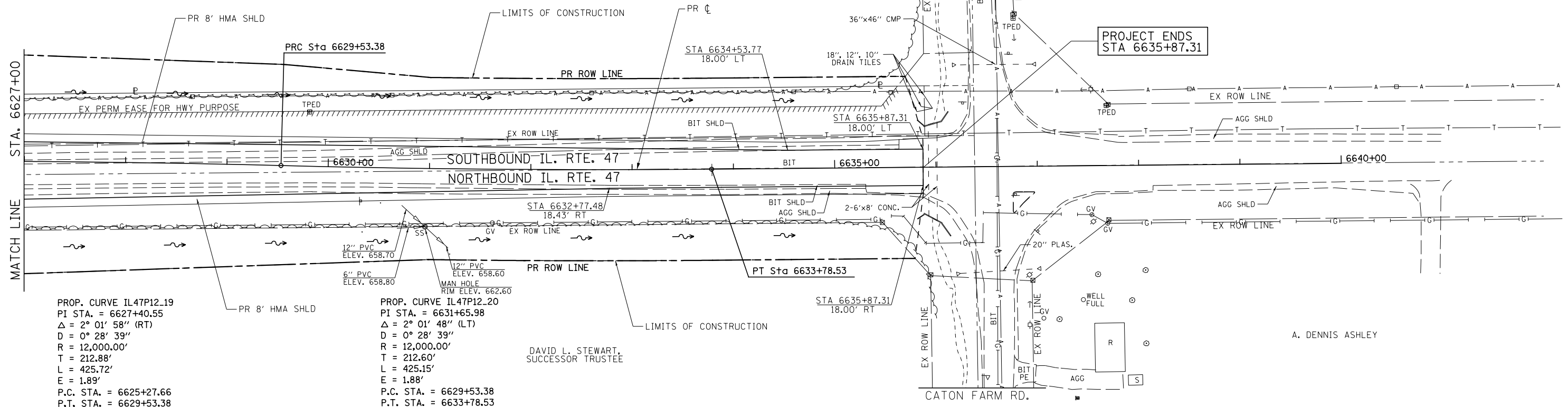


FOX BROTHERS/YORKVILLE LLC

UNKNOWN OWNER



PROJECT ENDS STA 6635+87.31



PROP. CURVE IL47P12.19  
 PI STA. = 6627+40.55  
 $\Delta = 2^\circ 01' 58''$  (RT)  
 $D = 0^\circ 28' 39''$   
 $R = 12,000.00'$   
 $T = 212.88'$   
 $L = 425.72'$   
 $E = 1.89'$   
 P.C. STA. = 6625+27.66  
 P.T. STA. = 6629+53.38

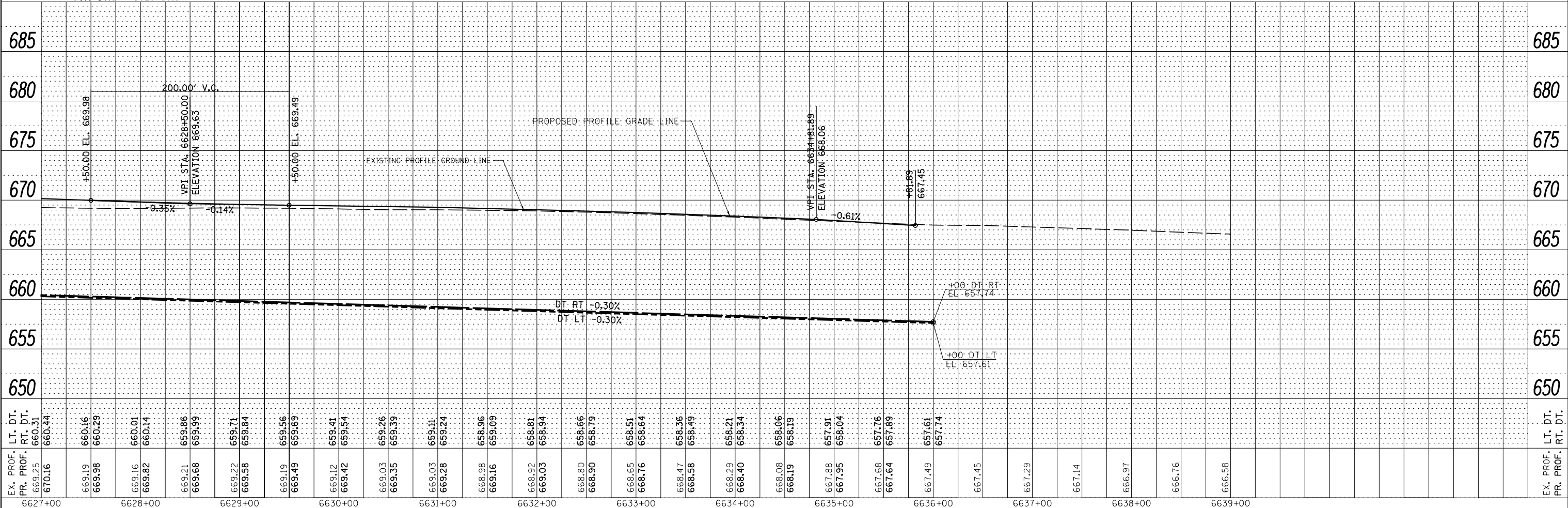
PROP. CURVE IL47P12.20  
 PI STA. = 6631+65.98  
 $\Delta = 2^\circ 01' 48''$  (LT)  
 $D = 0^\circ 28' 39''$   
 $R = 12,000.00'$   
 $T = 212.60'$   
 $L = 425.15'$   
 $E = 1.88'$   
 P.C. STA. = 6629+53.38  
 P.T. STA. = 6633+78.53

DAVID L. STEWART, SUCCESSOR TRUSTEE

A. DENNIS ASHLEY

PLAN	SURVEYED	DATE
	PLOTTED	
	ALIGNED	
	CHECKED	
	FILED	
	NO.	

PROFILE	SURVEYED	DATE
	PLOTTED	
	GRADES	
	CHECKED	
	STRUCTURE	
	NOTATIONS	
	CHKD	
	NO.	



FILE NAME =	USER NAME = bdcraene	DESIGNED - HLC	REVISED -
V:\3195\66884 (North Section)\CADD Sheets\0366884-sht-plnprf-26.dgn		DRAWN - HLC	REVISED -
SHT_PLNPRF		CHECKED - CAS	REVISED -
		DATE - 7/01/2014	REVISED -

STATE OF ILLINOIS DEPARTMENT OF TRANSPORTATION

IL. RTE. 47 PLAN & PROFILE

SCALE: H=50' V=5' SHEET 26 OF 39 SHEETS STA. 6627+00 TO STA. 6640+00

F.A.P. RTE.	SECTION	COUNTY	TOTAL SHEETS	SHEET NO.
326	(109, 110)R-1	KENDALL	619	122
CONTRACT NO. 66884			ILLINOIS FED. AID PROJECT	