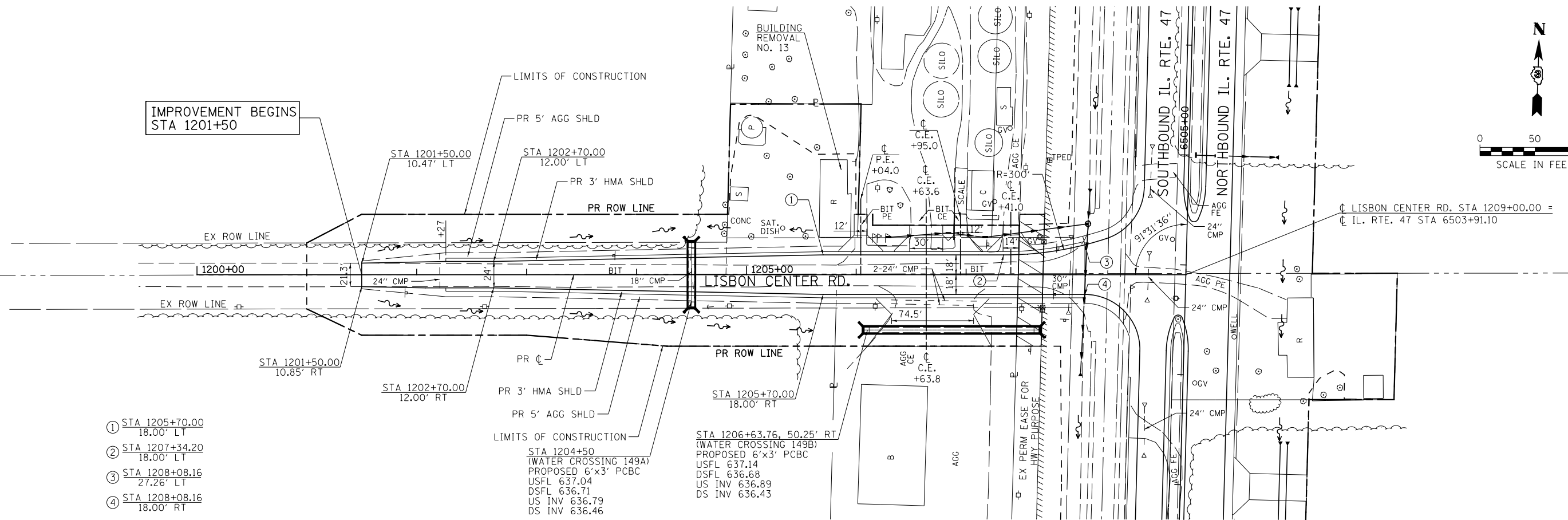


PLAN	SURVEYED	DATE
	PLOTTED	BY
	ALIGNED	
	CHECKED	
	FILE NAME	
	NO.	

PROFILE	SURVEYED	DATE
	PLOTTED	BY
	GRADES CHECKED	
	STRUCTURE NOTATIONS CHECKED	
	NO.	

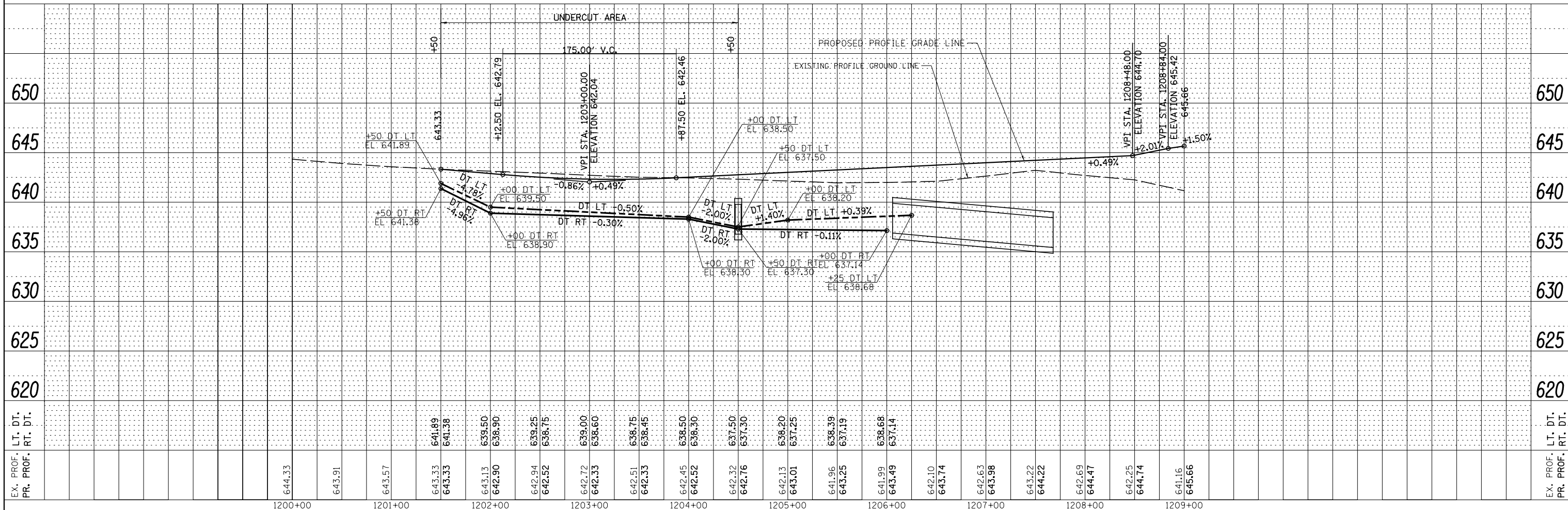
IMPROVEMENT BEGINS
STA 1201+50



- ① STA 1205+70.00
18.00' LT
- ② STA 1207+34.20
18.00' LT
- ③ STA 1208+08.16
27.26' LT
- ④ STA 1208+08.16
18.00' RT

LIMITS OF CONSTRUCTION
STA 1204+50
(WATER CROSSING 149A)
PROPOSED 6'x3' PCBC
USFL 637.04
DSFL 636.71
US INV 636.79
DS INV 636.46

STA 1206+63.76, 50.25' RT
(WATER CROSSING 149B)
PROPOSED 6'x3' PCBC
USFL 637.14
DSFL 636.68
US INV 636.89
DS INV 636.43



EX. PROF.	644.33	643.91	643.57	643.33	643.33	643.13	642.90	642.94	642.52	642.72	642.33	642.51	642.33	642.45	642.52	642.32	642.16	642.13	643.01	641.96	643.25	641.99	643.49	642.10	643.74	642.63	643.98	643.22	644.22	642.69	644.47	642.25	644.74	641.16	645.66	EX. PROF.				
PR. PROF.																																								
LT. DT.																																								
RT. DT.																																								
	1200+00	1201+00	1202+00	1203+00	1204+00	1205+00	1206+00	1207+00	1208+00	1209+00																														

STATE OF ILLINOIS
DEPARTMENT OF TRANSPORTATION

LISBON CENTER RD.
PLAN & PROFILE

F.A.P. RTE.	SECTION	COUNTY	TOTAL SHEETS	SHEET NO.
326	(109, 110R-1)	KENDALL	619	131
CONTRACT NO. 66884				

SCALE: H=50 V=5 SHEET 35 OF 39 SHEETS STA. 1200+00 TO STA. 1209+00

ILLINOIS FED. AID PROJECT